



uahpet  
**User Manual**  
Smart Pet Odor Purifier

### Safety Information

To reduce the risk of fire, electric shock, or other injury, please follow all instructions and safety guidelines.

1. Please hang the pet odor purifier on a smooth wall or put it into a cat litter box. Before hanging it on or placing it somewhere else, make sure the surface is clean.
2. To avoid damage, please don't place anything into any opening on the purifier, especially the smart air outlet..
3. Do not allow children to touch or play with the pet odor purifier.
4. Do not allow pets to bite the product, the battery inside will cause danger.
5. To avoid discomfort, don't have your face get too close to the smart air outlet.

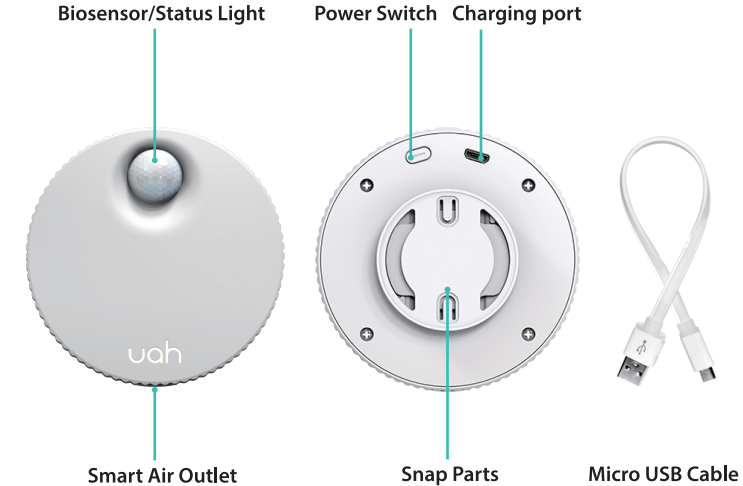
### What are in the Box

- 1 x Smart Pet Odor Purifier
- 1 x Micro USB Cable
- 1 x User Manual
- 1 x Adhesive

### Product Specification

Product Name	Smart Pet Odor Purifier
Product model	UJWQ01
Battery Capacity	2600 mAh
Input Voltage	DC 5V 1A
Product Material	ABS
Product Dimension	3.3" x3.3" x1.3"/ 85x85x33 mm
Product Weight	0.26lb / 0.12kg

### Getting to Know Your Pet Odor Purifier



**Blue light is always on**

Intelligent monitoring status, auto on/off when pet get close/leave.

**Red light is always on**

Power shortage.

**Blue light breathing**

Dispelling odor and bacteria.

**Red light breathing**

Power shortage.

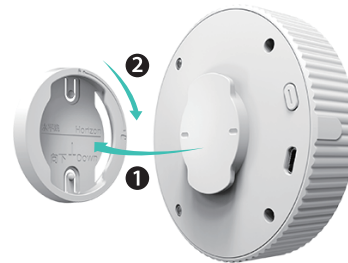
## Use Instruction

### Installation

1. You can hang the Smart Pet Odor Purifier on the wall above the pet toilet/cat litter box. Or you can place it inside the cat litter box.
2. How to set it up in place?
  - (1). Use a dry cloth to clean the wall. To avoid reducing stickiness, don't use any detergents to clean the wall. (8-16 inches away from the cat litter box is best).
  - (2). Tear off the film and press adhesive to push out the air.
  - (3). Hold and press it evenly for 10 seconds to ensure it Firmly installed.
3. Press the power switch to turn it on. The blue light is on when it's working.

### How to Charge it?

- Hold the purifier and unscrew it counterclockwise, plug the USB cable in and charge it with an adapter (No more than 5V input).
- The blue light will flash when charging. And once it's fully charged, the blue light will be always on.
- Align the buckle with the card slot and rotate clockwise to reset.



## Working Status

- When pets get in, the blue light flashes three times and then the purifier will automatically turn off. (There is a built-in biosensor in the purifier, and it will work once pet getting closer)
- When pets leave, it will turn on automatically.
- The purifier works and dispel odor every 10 minutes when nobody getting closer.

Professional Love for pets