

A quick experience

Step 1

Plug the receiver into the socket

The receiver will ring and the instruction lights will flash.

Volume Key

Press to change volume. There are 5 levels of volume in total including the 'Mute Mode'. The selected mode will be memorized and the receiver will keep the volume even if it is powered off and power on again.

Music Key

Press to change music. 36 songs are available.

Note: The music sent by each transmitter has been set before leaving the factory. It must be re-paired if you need to change the selected music. Switching the music of the receiver directly will not change the music sent by the transmitter.

Note

Please place the receiver at least 20" above the ground to maximize signal strength.

Step 2

Enjoy it!

Train your pet to touch the transmitter bell and the receiver will ring and flash light with music.

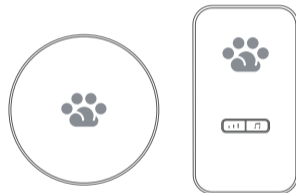


Have a question for PawTechie?
Email us:

kony@uahpet.com



MADE IN CHINA



Self-powered Wireless Doorbell

User Manual

How to install

Install the transmitter

Method 1

If the wall is clean and flat, just tear off the double-sided tape and stick it on the wall.

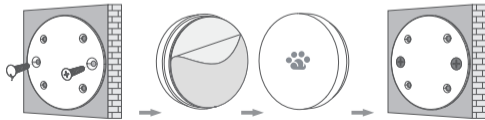


1. Tear off the double-side tape on the back of the doorbell transmitter.

2. Paste the other side the double-sided tape on the wall.

Method 2

If the surface of the wall is not flat enough, it can be installed with screws, which is more firm.







1. Fix the back plate to the wall with screws (or steel nails, four small holes).

2. Tear off the double-side tape on the back of the transmitter.

3. After tearing off the double-sided tape, stick it on the fixed back panel.

Pairing/Reset Pairing

The transmitter and receiver are already paired out of factory and ready to be used. Pairing is only needed when you want to add extra transmitter or change transmitter. You can pair one transmitter to many receivers or one receiver to many transmitters.

How to add Transmitter	
The first step: Choose a ringtone	Short press the music key  to choose your favorite ringtone.
The second step: Enter Pairing Mode	Press and hold on to Volume Key  or Music Key  , for 3 to 4 seconds, the light will start blinking (slow blink). This means the receiver is in pairing mode. Remark: <ul style="list-style-type: none">• To change the ringtone now: just press the Music Key till you found the one you like.• To Quit Pairing mode now: just press the Volume Key once to quit.• If No Action done in 30 seconds, the receiver will quit pairing mode.
The third step: Complete pairing to new transmitter	 You can now press the new transmitter to pair it to that receiver. The ringtone will be the one you choose just now, even after you power off and on the receiver.
Reset Pairing	
Press and hold on to Music Key or Volume Key for at least 10 seconds until you see the light blinking 4 times (quick blink). This means all transmitters are removed from the pairing with that receiver. The connection is reset. If you press the transmitter now, the receiver will not respond to it.	

Product specifications

Transmitter



Size: $\phi 67\text{mm} \times 19\text{mm}$

(Double-sided tape not included)

Weight: 36g

Frequency: 433.92MHz

Distance: 50M (outdoor open area)

Output power of the transmitter: 10dBm

Standby power consumption: 0W

Pressure to operate: about 700g

Receiver



Dimension: 83mm \times 48mm \times 23.5mm

Weight: 59g

Power supply: 110-240V AC

Plug: international standard 2 feet

Standby power consumption: 0.5W