



W O M B A T

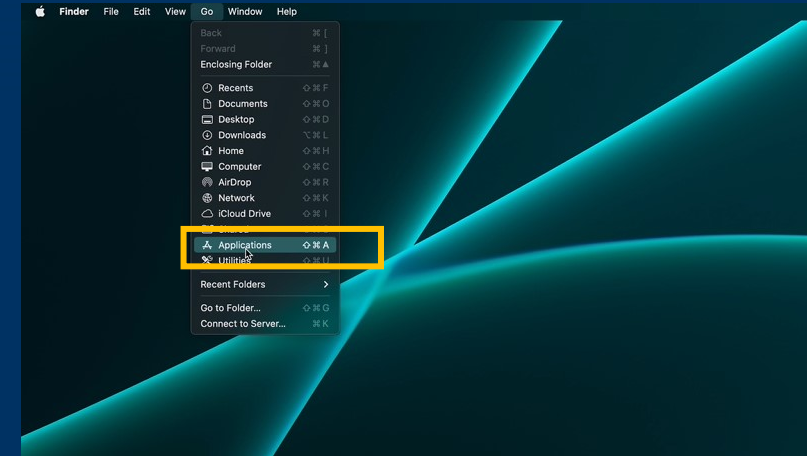
MAPLE PRO INSTRUCTION



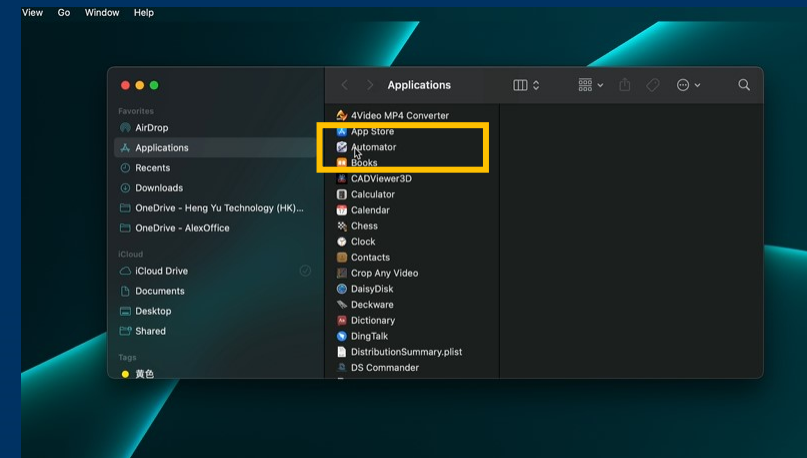
Setup for Calculator hot key



1. On the menu bar click “Go” and then click ”Applications”

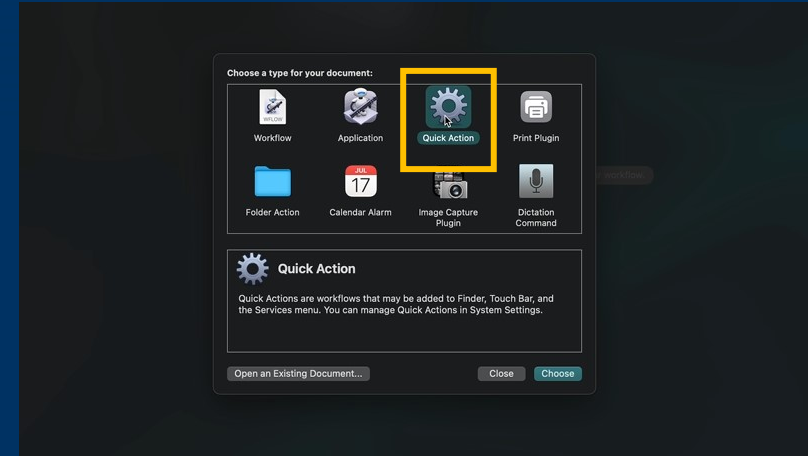


2. Then click “Automator”

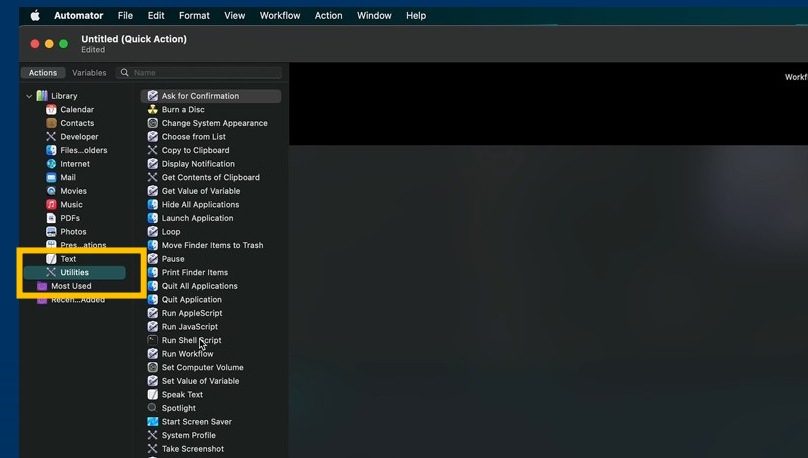




3. click “Quick Action”

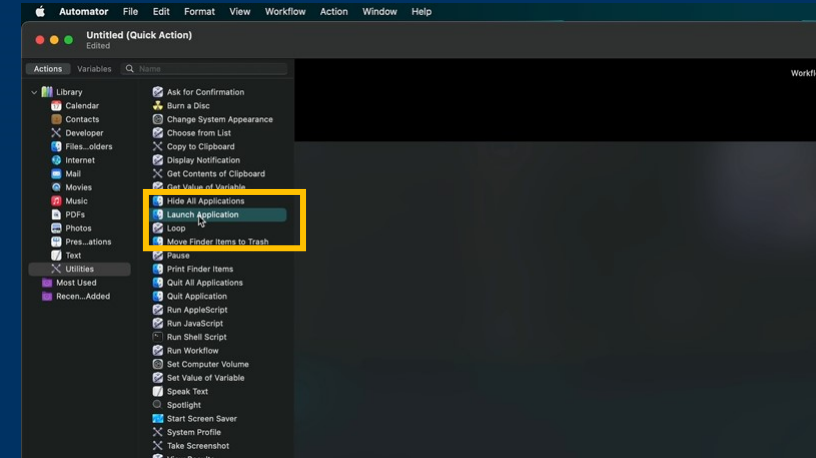


4. Move the cursor to the Left menu and click “Utilities”

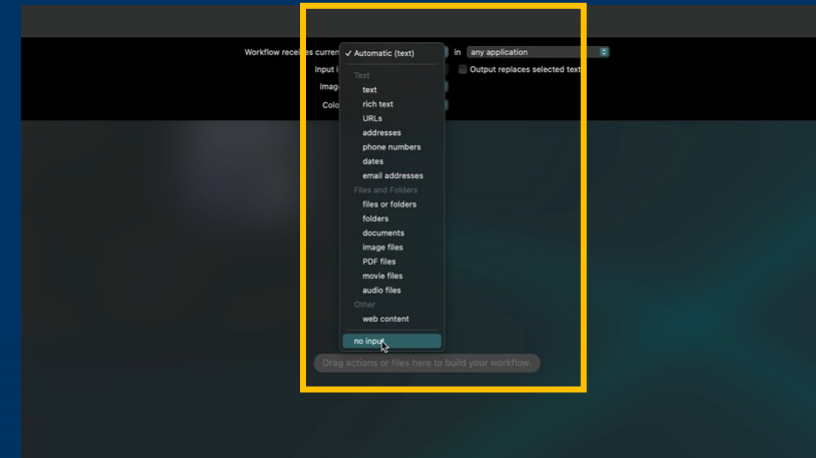




5. Then drag and drop the “Launch Application” to the right side “Gray” area.

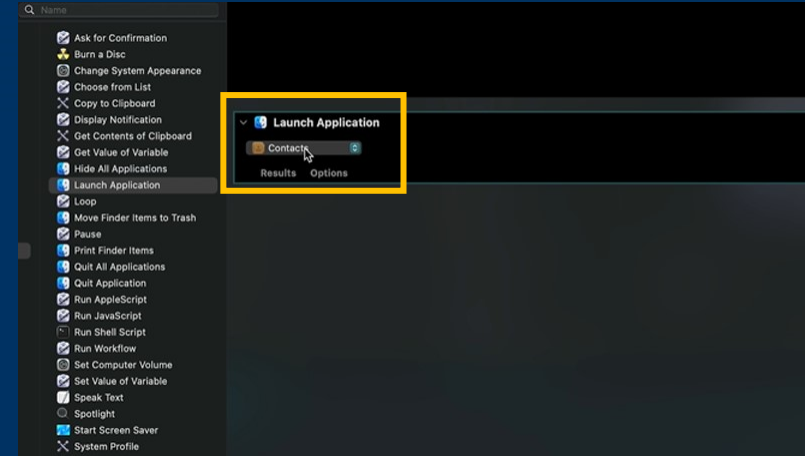


6. Set “Workflow receive current” to “no input”

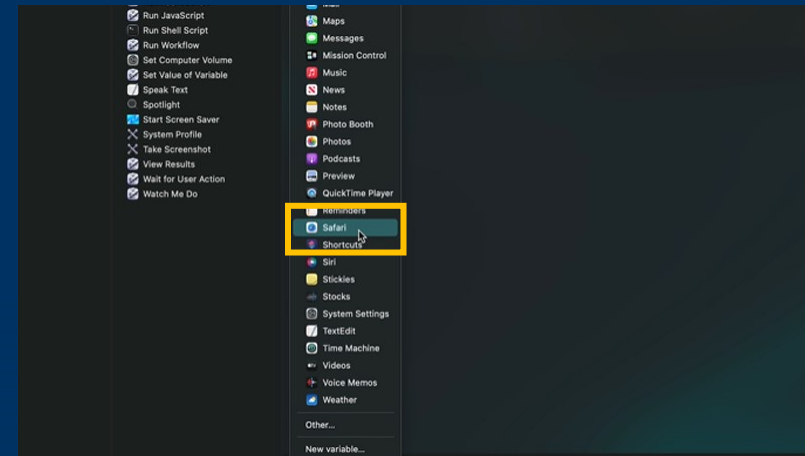




7. Click the drop down manual in “Launch Application”,

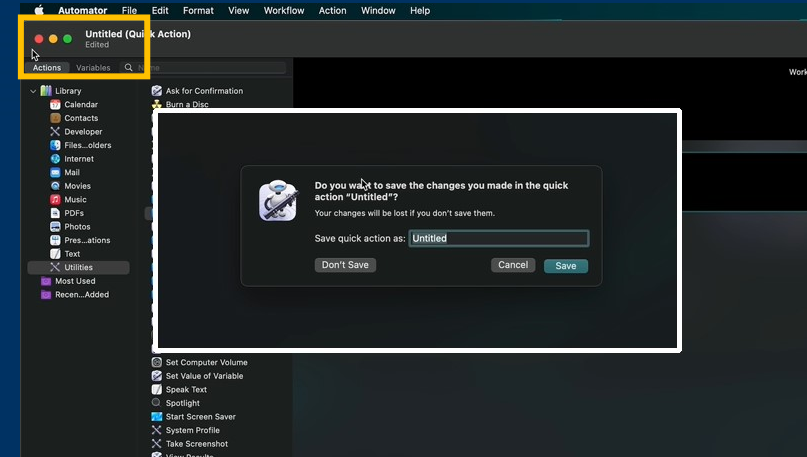


8. Find “Calculator” and click it

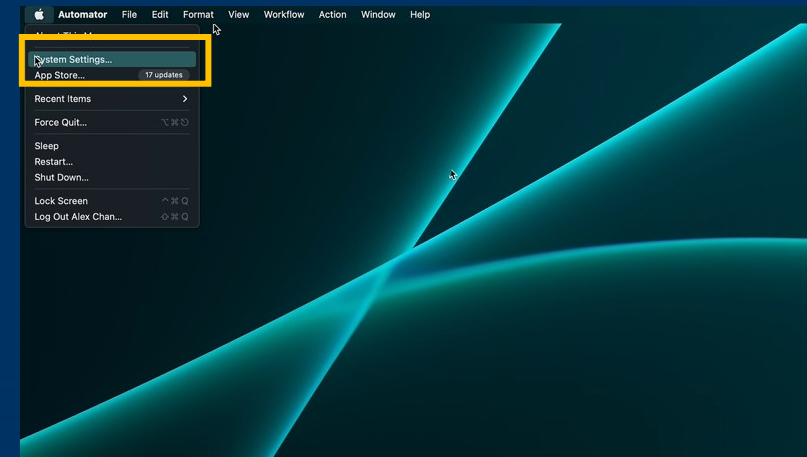




9. Then close the set up window, system will prompt a message and ask for "save quick action as: ...", for example, we name it as "Call Calculator", Then click save.

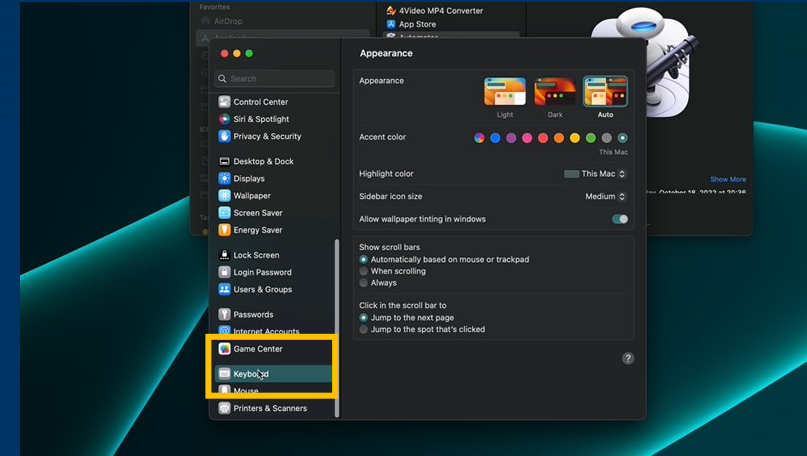


10. Go to the Apple menu again, click "System Settings"

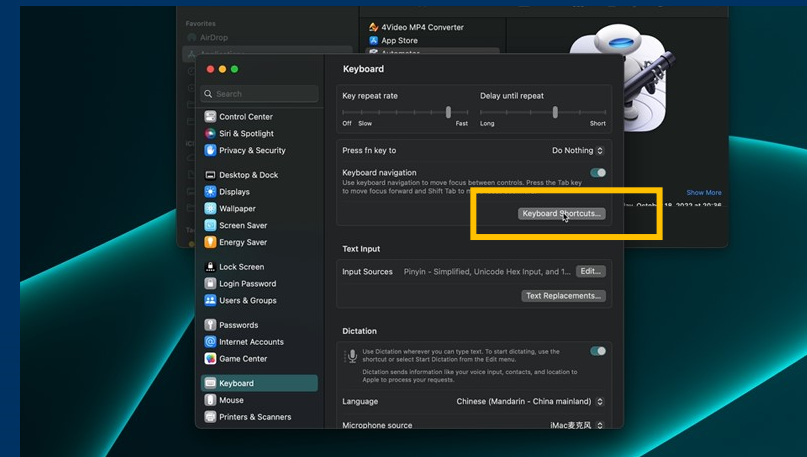




11. Find and click “Keyboard”

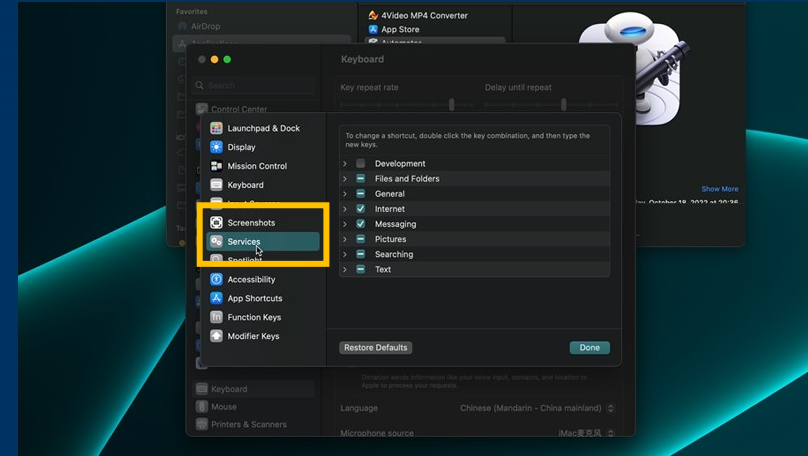


12. Click “Keyboard Shortcuts”

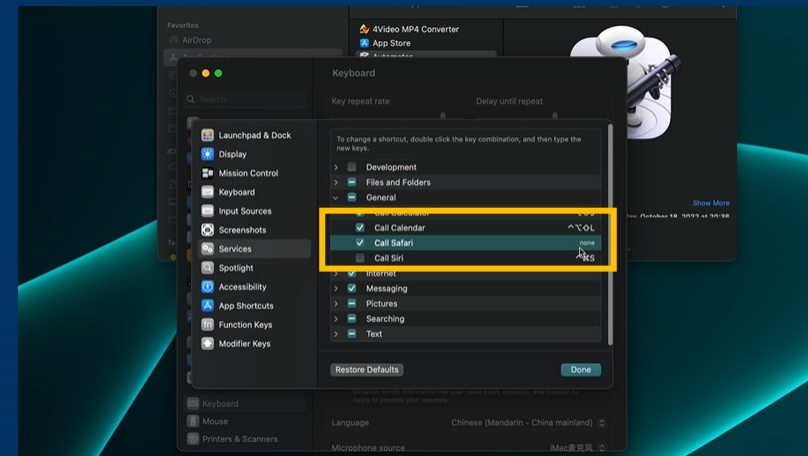




13. Find and click “Services” on the Left side



14. Check the box “Call Calculator”, then click “none” at the back

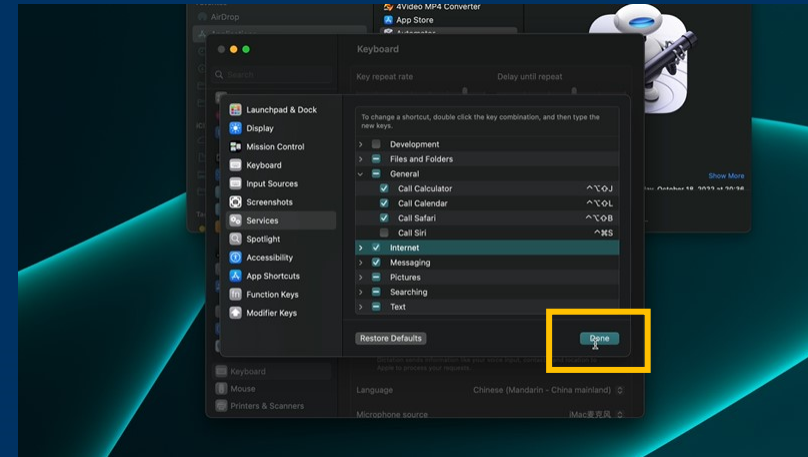




15. Press these keys on the keyboard:
“Control, Option, Shift and J”



16. Click “Done” to save the setting,
setup completed.





17. Now you can press the hot key on your
MAPLE PRO to invoke the Calculator

