



W O M B A T

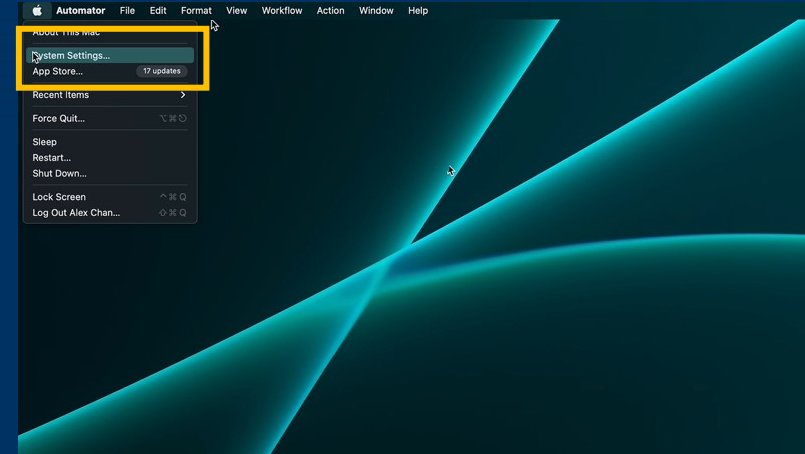


ASPEN PRO INSTRUCTION

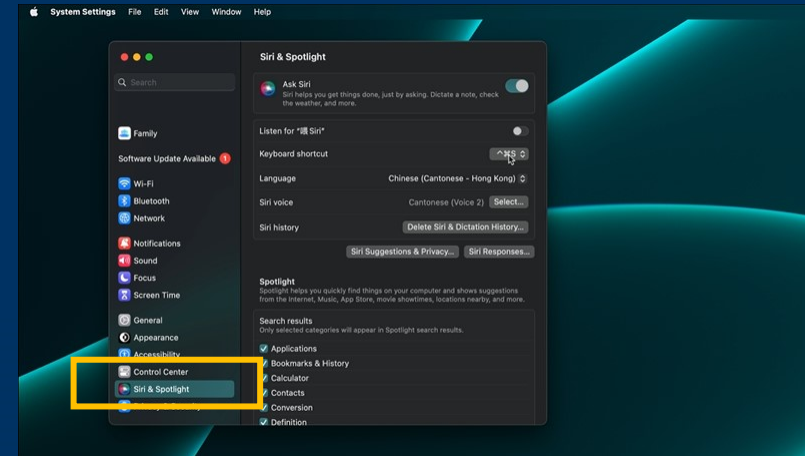
Setup for Siri hot key



1. Go to the Apple menu, click “System Settings”

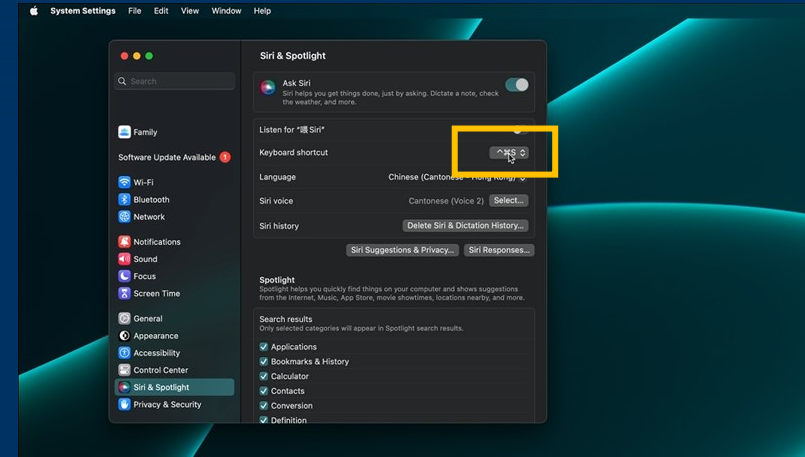


2. Find and click “Siri and Spotlight”

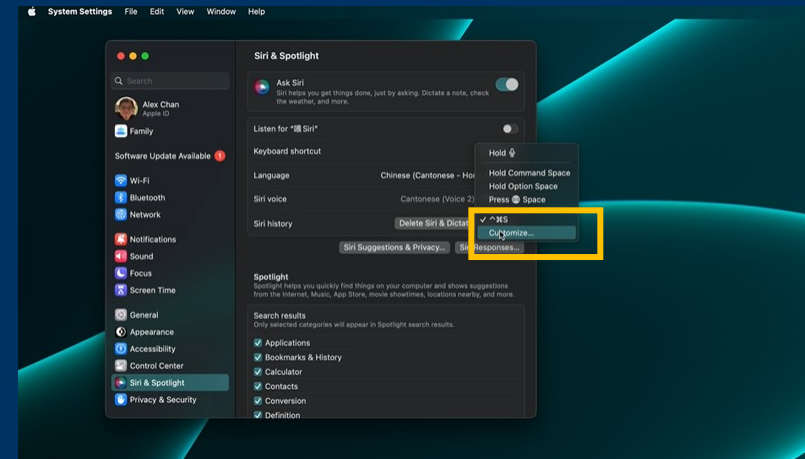
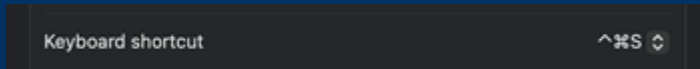




3. click the drop down menu at “Keyboard shortcut”



4. In the drop down manual, click “Customize”, then press “Control, Command and S” keys on The keyboard, it becomes like this





5. Setup Completed! Now you can press Fn + “Siri” hot key on your ASPEN PRO to invoke Siri for voice assistance.

