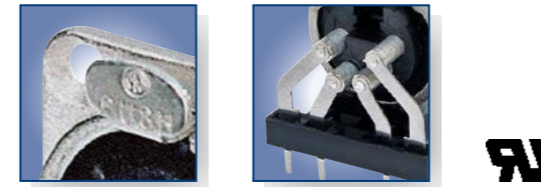




Locking release tab



Removable insert



Locking release tab

Horizontal PCB mount



Ground shielding

White painted housing

XLR TOP Series

D Series

DL Series

DLX Series



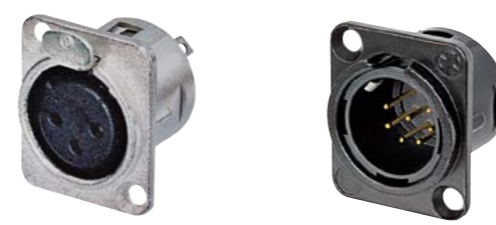
NC3FDX-TOP

NC3MDX-TOP



NC3FDM3-H-B

NC3MD-V



NC3FD-L-1

NC7MD-L-B-1



NC3FD-LX-HE

NC5MD-LX

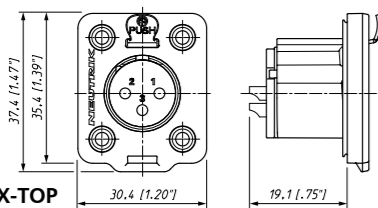
- Heavy-duty sealed XLR connector range
- 3 and 5 pin chassis connector
- Outdoor protection acc. IP65 and UL 50E
- Uses high impact UV resistant materials per UL
- Gold plated contacts
- Maintain sealing when in use and when disconnected
- Optional waterproof and UV resistant protection cap

- "D" shape metal shell
- Optimal RF protection using 3 shield contacts
- Horizontal and vertical PCB mount with separate ground contact
- Mounting holes with M3 threads available
- 2 piece connector, insert is removable from shell
- Front locked / unlocked insert

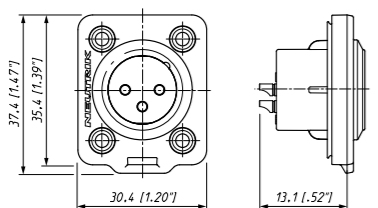
- Unified "D" shape metal shell
- Solder cups on 3 – 7 pole version
- Additional PCB mount on 4 and 5 pole
- Front and rear mountable

- Next generation of the popular DL Series with greater functionality
- All metal housing offers best overall RF protection and electromagnetic shielding
- Duplex ground contact for excellent contact integrity between chassis and cable connector
- Unique cage type female contact on 3 pole version increases conductivity and reduces wear on the mated male contact
- Female contact incorporates a solder barrier to prevent solder running into the contact mating area
- Larger solder contacts for easier termination
- Optional connection to easily join pin1 to chassis ground
- D-style housing provides installation compatibility with

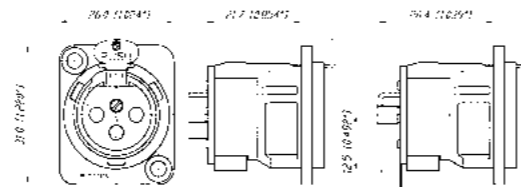
NC*FDX-TOP



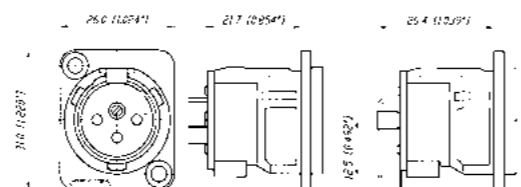
NC*MDX-TOP



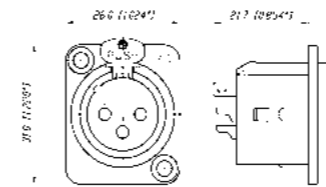
NC3FD-V / NC3FD-H



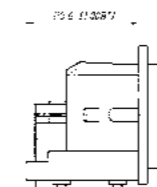
NC3MD-V / NC3MD-H



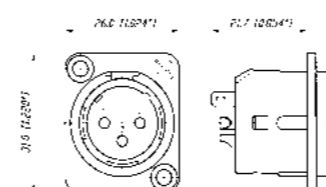
NC3FD-L-1



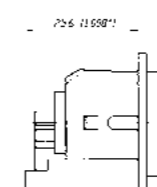
NC*FDM3-H



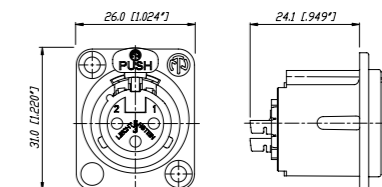
NC3MD-L-1



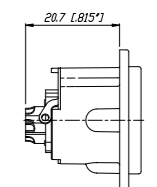
NC*MDM3-H



NC3FD-LX



NC*MD-LX



*: 3 - 5 contacts

*: 3 - 5 contacts

*: 3 - 7 contacts

