



LEATHER COLLECTION

Use and Maintenance & Guarantee Certificate

**EVERYTHING YOU SHOULD TO KNOW
ABOUT YOUR SOFA**



Dear customer,

thank you for choosing a DIGIÒ sofa.

This is an exclusive product, boasting an innovative design. It has been made using only high-quality materials, skilfully assembled with all the care of our craftsmen.

Our company's mission is to achieve excellence in every phase of production in order to assure our customers' long-lasting esteem.

This manual provides information concerning the correct use and maintenance of our sofas. Just a few recommendations that will help you keep your sofa in a perfect condition for a long time.

THE FIRST THINGS TO KNOW, TO DO AND TO AVOID

- Remove the protective cellophane wrapping the sofa. Do not use sharp tools that may damage the sofa coverings.
- When moving the sofa, do not lift it by the cushions sewn to the frame; you might ruin them.
- At first sight, the sofa may show some folds or hollows caused in transport. This is not a problem; they will stretch after a few days. In order to accelerate the stretching process, we suggest you fluff up the cushions and smooth the covering.
- The headrest and the backrest cushions of a new sofa can have different degrees of rigidity. After a few days of use, this difference will disappear. The wooden feet may show slight differences in shades and grain due to the natural characteristics of the material.
- If the sofa is covered with leather, after some time it will show creases and double pleats due to the elastic properties of the material. The leather adjusts to the shape of the persons sitting on it.
- The sofa is provided with a wooden structure: therefore, it is better not to sit on parts not designed for seating, such as armrests and backrests as this could damage them.

- Avoid to put down warm objects on the leather. The sofa should be placed at least 40 cm from any heat sources in order to avoid colour fading.
- For the same reason, do not expose the sofa covering to sunlight or to the direct light of lamps.
- Never use harsh, chemicals or paint around your leather sofa. Keep materials like fingernail polish, bleach, nail polish remover, glue and household cleaners away from your leather. Always cover your upholstery before using these chemicals. Avoid all products containing solvents or oils, as they will adversely affect the surface of the leather.
- Do not allow your pets onto your leather sofa. Pets have sharp claws which can scratch the leather. Their saliva is very harmful to leather as are their other body fluids and oils.
- Although it is obvious, it is worth reminding you not to use the sofa in any way that could damage it, such as submitting it to violent impacts or placing more people on it than it is designed for.
- The product is designed for interior use only. When the time comes to discard it, do not dispose of the sofa improperly but make use of public waste disposal systems.

THE VARIOUS PARTS OF YOUR SOFA

The product you have chosen is the result of the skillful assembly of different parts produced with great care by craftsmen and using top-quality materials.

Frame: this is a wooden structure that is cut to measure to make each model unique. We only use seasoned timbers which can alone guarantee the stability of the frames over time. Elastic Straps, patented for the furniture industry, are stretched over the frame.

Upholstery: this is generally made of environmentally friendly polyurethane foam covered with a Tecnoform layer. The polyurethane use has a varying density according to the parts to be upholstered. Armrests, supports for the small of the back and shoulder rests are upholstered with polyester fibres and goose feathers to guarantee softness and comfort to the most delicate parts of the body.

DIGIÒ

Real leather has always been the very best for upholstering a seat. Since earliest times, it has been used to add value to furnishings.

This is still true today thanks to its fine characteristics - 'breathability' and elasticity - and its hard-wearing nature. Moreover, it is a pleasure to look at and caress, a pleasure that increases as time only improves it.

Before becoming a DIGIÒ covering, the hide undergoes a strict selection procedure in its the place of origin. Once chosen, the most suitable processing to enhance its qualities is decided. At the end of the whole process, it becomes one of the three important Incanto leather families: Family, Natural and Luxury.

CLEANING

Follow the instructions below to keep the covering clean:

- Dust it periodically with a dry, soft and clean cloth.
- Use only a soft-bristled brush if you wish to brush it.
- Do not use detergents that are not recommended in this manual since they have not been tested by the upholstery manufacturer.
- Do not pour water or any kind of fluids, including detergents, directly on the sofa; first pour them on a soft dry cloth and then clean.
- If the sofa gets wet, do not dry it with a hairdryer, but use kitchen paper or a dry cloth.
- Since leather is a natural product, some stains such as ink cannot be completely removed.

THE CHARACTERISTICS OF "FAMILY" LEATHER

The coverings of this family are particularly appreciated because of their high degree of resistance to stains, to light and to wear and tear. "Family" leather is most suited to the most heavily used rooms of a house. It is easy to clean and requires little maintenance.

CARING FOR "FAMILY" LEATHER

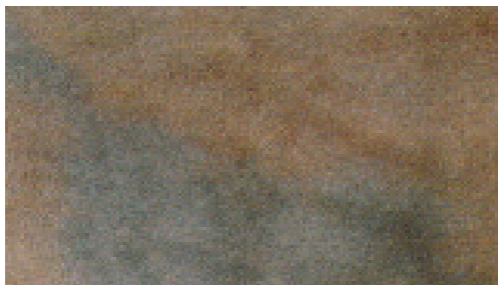
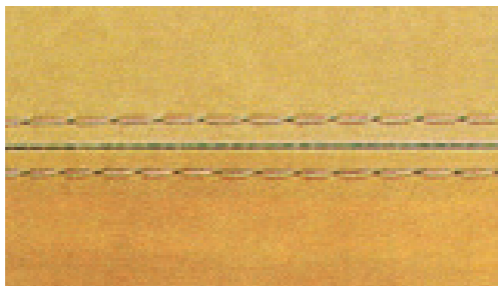
- Dust the sofa periodically with a soft, dry and clean cloth.
- Remove soft drinks, coffee, tea, milk, chocolate, oil, fats, and cosmetics stains by blotting the surface with a cloth or kitchen paper. Dampen a clean cloth with water and neutral soap and rub the stain gently from outwards inwards without soaking the leather surface. Dry immediately with a clean cloth (never with a hairdryer or by exposing it to direct sunlight). Please note! Use only water and neutral soap for this operation; other substances may irreparably damage the leather, causing it to crack and the colour to fade.
- Keep the sofa away from sources of heat such as stoves and radiators.
- To ensure the colour of the covering remains as new, avoid all exposure to direct sunlight or to powerful lamps.

THE CHARACTERISTICS OF "NATURAL" LEATHER

The most beautiful coverings, the most pleasing to the eye and to the touch are those in natural leather from the Incanto range called "Natural". The hides undergo the smallest number of processes possible in order to maintain and enhance their natural characteristics. Consequently, therefore, only the most prestigious hides can hope to become "Natural" leather, because it is their natural qualities that make them exceptional.

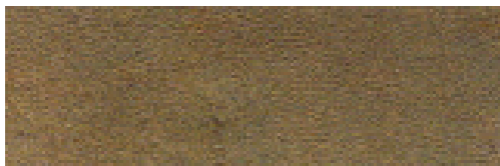
A COLOUR THAT IS EVENLY DISTRIBUTED

The dyeing of "Natural" leather is effected traditionally by immersing it in wooden barrels; this process by hand creates those slight differences in colour that are so appreciated by connoisseurs of leather coverings. Indeed, unlike the artificial uniformity of processed leathers, the dyeing of leather naturally depends on absorption along the veining of the material, and it is this which causes its beautiful nuances of colour.



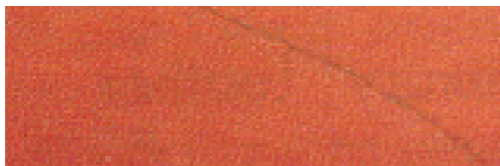
TRACES OF THE ANIMAL'S LIFE

Another fine aspect of "Natural" leather are the marks tracing the animal's life. More than a guarantee of being genuine, they provide a true identity card, making each sofa quite unique.



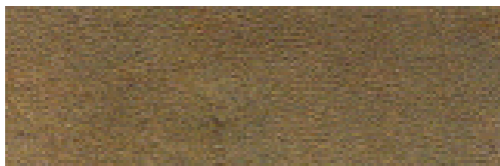
GRAIN DIFFERENCES

Each part of the animal's body has different characteristics and functions that affect the appearance and consistency of the leather. On the skin, the texture varies according to the area covered. This variety is the most important requisite of "Natural" leather because it cannot be reproduced artificially.



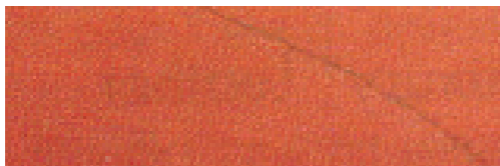
VEINS

The deep lines criss-crossing the surface of the leather like a river-system mark the traces of the animal's superficial veins.



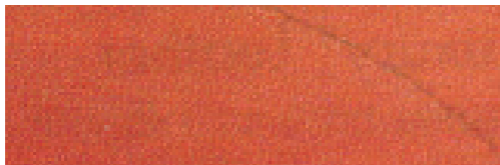
SCRATCHES

These are caused by the animal's rubbing against the ground or plants.



WRINKLES ON THE NECK

These are the characteristics of a well-fed animal. The more evident they are, the healthier the animal and, therefore, the better the hide.



SCARS

These are small wounds and abrasions caused by thorny plants, shrubs or fences.

CARING FOR “NATURAL” LEATHER

“Natural” leather requires a little more care than the others. However, just follow these simple recommendations to keep your sofa always in good condition.

- Dust the sofa periodically with a soft, dry and clean cloth.
- To remove dry stains sweep them off carefully with a soft-bristled brush.
- To remove soft drinks, coffee, tea, milk, chocolate, oil, fats and cosmetics stains, blot the surface with a cloth or kitchen paper.
- To remove greasy stains (oil, ketchup, mayonnaise, chocolate) blot the surface carefully with kitchen paper; but do not press hard as this could push the stain into the pores of the leather.
- Keep the sofa away from sources of heat such as stoves and radiators.
- To ensure the colour of the covering remains as new, avoid all exposure to direct sunlight or to powerful lamps.

OTHER DIGIÒ COVERINGS

As in the case of the leather, DIGIÒ uses only top-quality coverings. These are of two sorts: microfibre and fabric. They are chosen on the basis of both their aesthetic and technical characteristics. Moreover, they must pass several quality control tests, including the Martindale, used to test their resistance to wear and tear.

THE CHARACTERISTICS OF DIGIÒ MICROFIBRES

Microfibre is a technologically-advanced fabric. Besides its aesthetic appeal, such as its velvety touch, its lightness, its elegance and the wide range of colours, it is also extremely durable, hard-wearing and easy to care for. It is the perfect choice for combining elegance with informal use.

THE CHARACTERISTICS OF DIGIÒ FABRICS Fabric coverings boast both aesthetic appeal and functional benefits: they are pleasing to the touch and they have the typical 'breathability' of natural materials and the particular temperature comfort that make DIGIÒ fabrics suitable for all seasons.

CLEANING

It is important to act immediately to remove stains. Clean these off with a soft, preferably uncoloured cloth or with kitchen paper.

If it is necessary to use solvents or detergents, do not pour these directly on the stain, but use a soft uncoloured cloth. Please check the tolerance of the fabric to the solvent by firstly trying on a part of the sofa which is not visible.

RECLINING ARMCHAIRS

RECLINING ARMCHAIRS

Before using the mechanism, cut the plastic band underneath that blocks it during transport.

- **To recline armchairs without side button.**

Take hold of the armrests and push the upper part of your body backwards.

The angle of the backrest can be adjusted simply by pressing on the armrests and moving your body backwards or forwards. To return to the upright position, take hold of the armrests, move your body forwards and press your legs on the footrest until in the fully upright position.

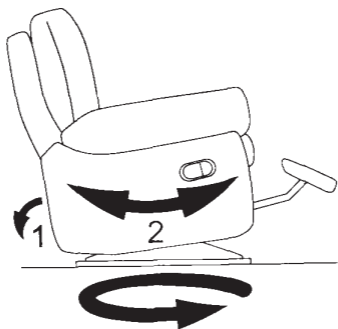
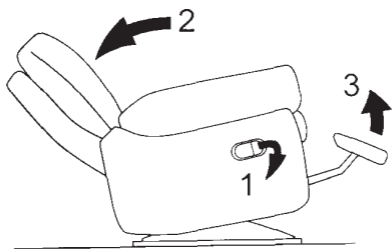
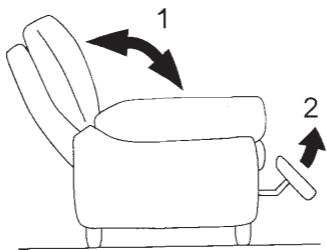
- **To recline armchairs with side button.**

Lift the button lever and push the upper part of your body backwards. The angle of the backrest can be adjusted simply by pressing on the armrests and moving your body backwards or forwards. To return to the upright position press your legs on the footrest until in the fully upright position.

- **To rock and turn.**

Move the handle mounted on the lower part behind the armchair leftwards. To deactivate the rocking or the turning mechanism, move the handle back to its initial position.

To prevent any damage to the mechanism, do not allow children to play with it, and nor should it be used if seated incorrectly.



RECLINING SOFAS

RECLINING SOFAS

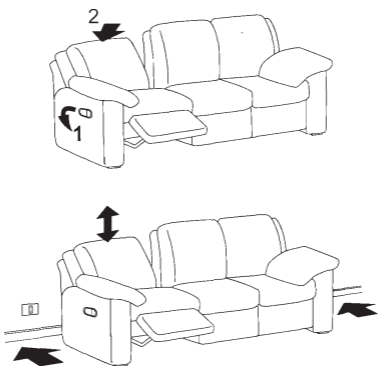
Before starting the mechanism, cut the plastic band underneath that blocks it during transport.

- **To recline the side backrest.**

Press the side button and push the upper part of your body backwards; the footrest will lift automatically. Adjust the angle of the backrest by pressing the armrests and push your body backwards or forwards. To return to the upright position, push the footrest backwards with your legs and move your body forward.

- **Zerowall.**

All Incanto sofas equipped with Zerowall mechanisms enable the backrest to be reclined even if the sofa is placed against the wall. Once the backrest is back in the upright position, it may not be perfectly aligned with the other fixed elements of the sofa.



Two-fold action sofa

To open

- Remove the cushions from the seat.
- Take hold of the handle on the bedsprings, lift up and at the same time outwards; pull the supporting bar down to the floor.
- Take hold of the second supporting bar, lift it and pull it down to the floor.
- To lift the headrest raise it until you hear a click.

To close.

Carry out the same operations in reverse order.

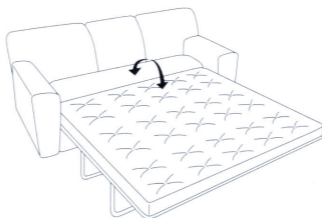
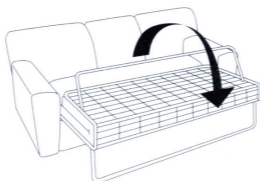
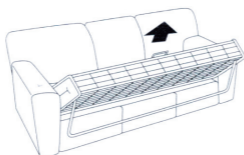
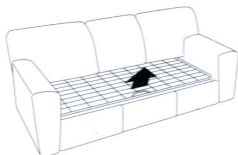
To close the headrest.

Raise it until you hear a click and move it slowly back to its initial position.

WARNING!

Do not sit on the bed headrest.

SOFABEDS



Three-fold action sofa

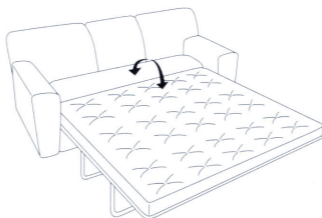
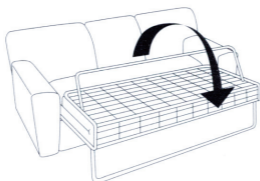
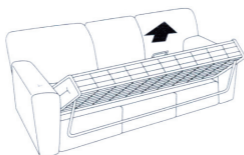
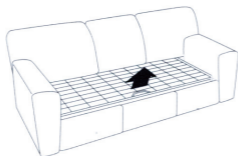
To open

- Remove the cushions from the seat.
- Take hold of the handle on the bedsprings, lift up and at the same time outwards.
- Take hold of the supporting bar, lift it and pull it down to the floor.
- Take hold of the second supporting bar, lift it and pull it down to the floor.

To close.

Carry out the same operations in reverse order.

SOFABEDS



Two-fold action sofa with sliding cushions

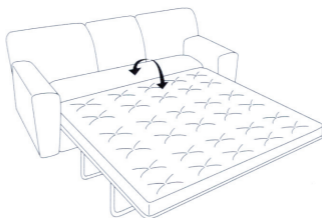
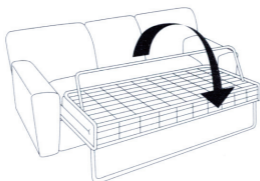
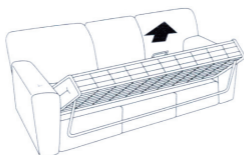
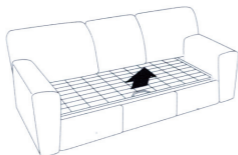
To open

- Take hold of the fabric handle located between the two cushions and pull it until the first supporting bar is completely on the floor. The backrest cushions will lift automatically.
- Lift the second supporting bar located behind the seating cushions sewn to the bedsprings.
- Take hold of the end bar of the bedsprings, which is located behind the seating cushions, and unfold the bedsprings completely until the second supporting bar is firmly on the floor.

To close.

Carry out the same operations in reverse order. Then lower the backrest cushions.

SOFABEDS



PRODUCT GUARANTEE

All products DIGIÒ are made using a manufacturing process of high quality certified according to UNI EN ISO 9001. Here are the conditions of guarantee.

DURATION AND TERMS OF THE GUARANTEE

The wooden structure is guaranteed for ten years from manufacturing defects under normal household.

Padding , pillows, mattresses and mechanisms of metal are guaranteed for two years from manufacturing defects under normal household use: Any softening of padding cushions and seating is normally due to the use of the product over time. The leather is guaranteed for two years under normal household. Sofa italia warrants its leather trim are made of genuine leather to 100%. The presence of differences in texture, folds, natural sings (eg scars), tone differences, are normal and typical for a natural product. These characteristics certify and express the naturalness and beauty of genuine leather, making the product totally unique and original.

EXCLUSIONS FROM GUARANTEE

This guarantee excluded from the normal wear of the product. This guarantee does not cover damage caused by things, animals, people or misuse and or inadequate maintenance of the product. In this case of leather, confirmed that dealing of nature product reacts naturally with exposure to heat. Light sources, chemicals, solvents, inks, dyes, bodily fluids, and therefore any changes due to these causes are not covered by this guarantee.

GUARANTEE CERTIFICATE

VALIDITY AND ACTIVATION MODALITY OF GUARANTEE

This guarantee is valid only for the first buyer (final consumer) and refers to the first delivery address (the first buyer).

From the purchase the terms above mentioned, the guarantee ceases to exist, and any requests for assistance, following the said terms will be provided only on payment.

If the customer finds a defect covered by this guarantee, he should contact the retailer, show a valid receipt for a purchase (invoice or receipt), and he should also provide a clear and objective description of the problem. The availability of images/photos representative of the problem, you can speed the process for resolving the complaint.

Without previous verification by its own responsibility, the manufacturer will perform surgery on the product considered most appropriate to the type of problem.

If identical materials are unavailable, the manufacturer will use substitute materials of identical quality.

Producer responsibility is limited to the fullest extent of the value of the product.

This is the only guarantee recognized as valid by the manufacturer value of the purchased product.



 DIGIÒ
LEATHER COLLECTION



MADE IN ITALY