



Flipper

Its functional and chic with impressive detailed hand-sewn upholstery, the Flipper collection is a perfect fit for a traditional or contemporary style. It's surely fit for any room scheme.



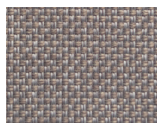
Nest Function

Getting its name by how the dual motion sleeper nests a portion of the mattress perfectly below the seat and tucking the another portion effortlessly in the back of the frame. A combination that does not compromise on style or comfort whether seated or sleeping.

Weights & Measures

COT COT	FULL XL LOVESEAT	QUEEN LOVESEAT	KING SOFA
Width: 37 in/94 cm	Width: 64 in/162 cm	Width: 69 in/175 cm	Width: 85 in/211 cm
Bed Size: Cot Size	Bed Size: Full XL Size	Bed Size: Queen Size	Bed Size: Queen Size
Bed Width: 30 in/76 cm	Bed Width: 55 in/140 cm	Bed Width: 60 in/152 cm	Bed Width: 76 in/193 cm
Bed Length: 80 in/203 cm	Bed Length: 80 in/203 cm	Bed Length: 80 in/203 cm	Bed Length: 80 in/203 cm
Cap/Seat: 275 lbs/125 kg	Cap/Seat: 275 lbs/125 kg	Cap/Seat: 275 lbs/125 kg	Cap/Seat: 275 lbs/125 kg
Cap/Sleep Unit: 275 lbs/125 kg	Cap/Sleep Unit: 275 lbs/125 kg	Cap/Sleep Unit: 275 lbs/125 kg	Cap/Sleep Unit: 275 lbs/125 kg
GENERAL	SEATING	SLEEPING	
Height: 35 in/88 cm	Seat Height: 18 in/45 cm	Mattress Material: Foam Mattress	
Depth: 40.5 in/102 cm	Seat Depth: 21.5 in/54 cm	Mattress Thickness: 5 in/12 cm	
Arm Height: 28 in/71 cm	Comfort: Medium	Total Depth: 85 in/215 cm	
Arm Width: 4 in/10 cm	Material: HR Foam (High Resilience)		
Leg Height: 4 in/9 cm	Density: 2.1 lbs/33 kg		
	Suspension: No Sag Springs		

In-Stock Options



Loule 413
Silver



234/9
Chrome