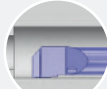
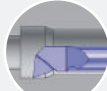


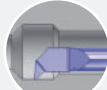
Système de désignation
Bezeichnungssystem
Designation system **Info** > **10.02**

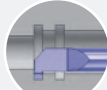
Nuances & paramètres de coupe
Sorten & Schnittwerte
Grades & machining data > **10.08**

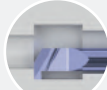
Porte-outils
Halter
Holders **BH / BHS / BHY / BHK** > **10.10**

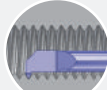
Alésage
Ausbohren
Boring **BA / BAX**  > **10.20**



Alésage-copiage
Ausbohren-kopieren
Boring chambering **BCX**  > **10.24**

Copiage
Kopieren
Chambering **C45 / C45X**  > **10.26**

Gorge
Einstechen
Grooving **GX**  > **10.30**

Fonçage-tournage
Einstechen und drehen
Grooving and turning **GTX**  > **10.32**

Filetage
Gewindedrehen
Threading **TP60° / TP55° / TM**  > **10.34**

Gorge frontale
Axiales Stechen
Axial grooving **FEG / FIG**   > **10.40**

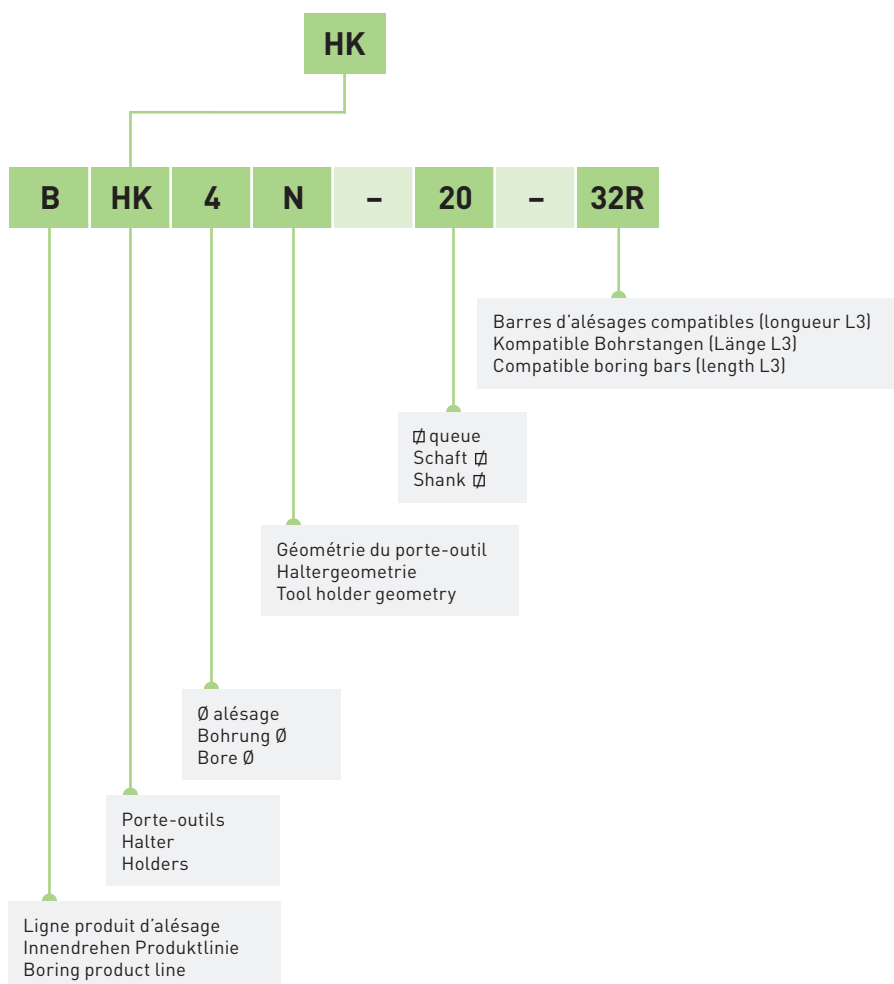
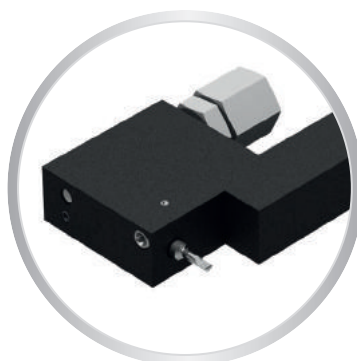
Ébauches / Jauges d'alignement / Adaptations machines / Accessoires
Rohlinge / Richtplatten / Maschinenanpassungen / Zubehöre
Blanks / Adjusting tools / Machines adapters / Accessories > **10.42**

Système de désignation des porte-outils

Halter Bezeichnungssystem

Holders designation system

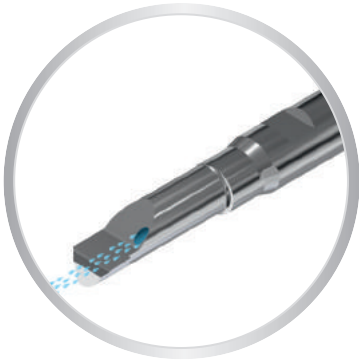
BHK



Système de désignation des barres d'alésage

Bohrstangen Bezeichnungssystem

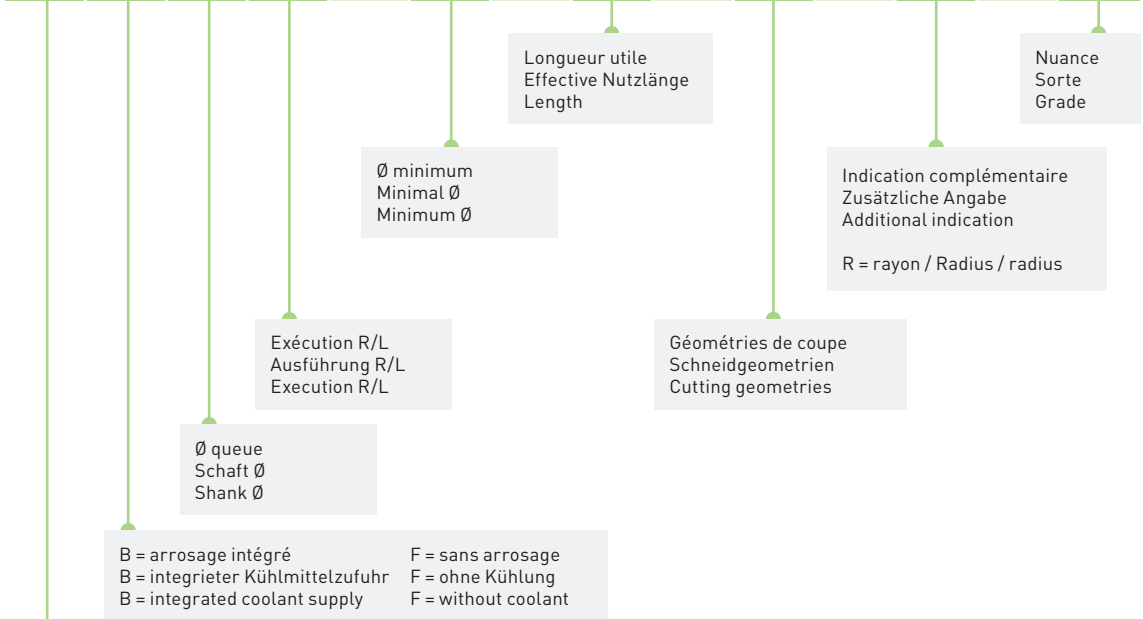
Boring bars designation system



B

F

B B 4 R - 25 - 75 - BAX - R05 - ZN



Porte-outils avec écrou de serrage

Halter mit Spannmutter

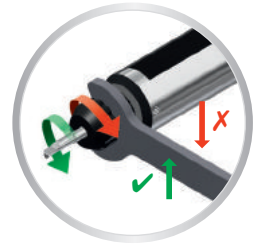
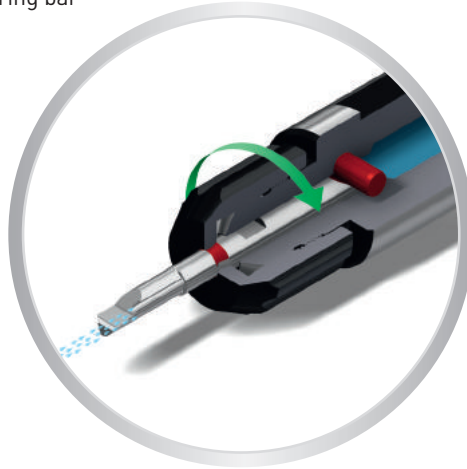
Tool holders with clamping nut

BH-D

Arrosage par la barre d'alésage

Kühlung durch die Bohrstange

Cooling through the boring bar



Porte-outils avec arrosage multiple

Halter mit mehrfaches Kühlungssystem

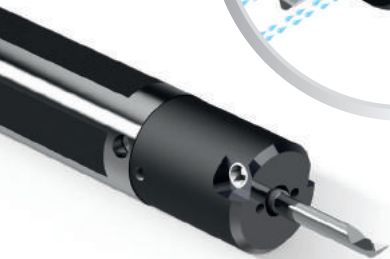
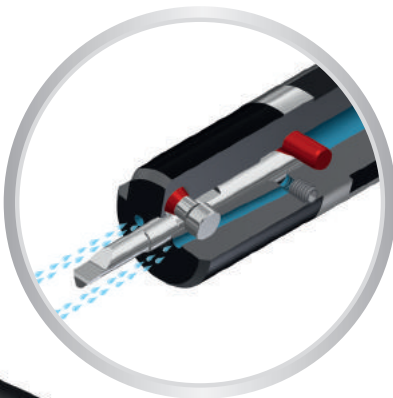
Tool holders with multiple coolant system

BHS-D

Système de serrage à vis transversale

Querverschraubungssystem

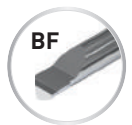
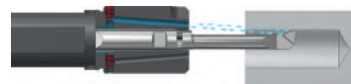
Clamping system with transverse screw



Arrosage sur l'arête de coupe

Kühlung auf der Schneidkante

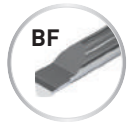
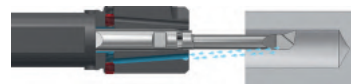
Cooling on the cutting edge



Arrosage favorisant l'évacuation des copeaux

Spanabfuhr fördernde Kühlung

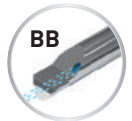
Cooling for better chip outflow



Arrosage par le centre de l'outil

Zentrale Kühlmittelzufuhr

Cooling through the center of the tool



IN-LINE

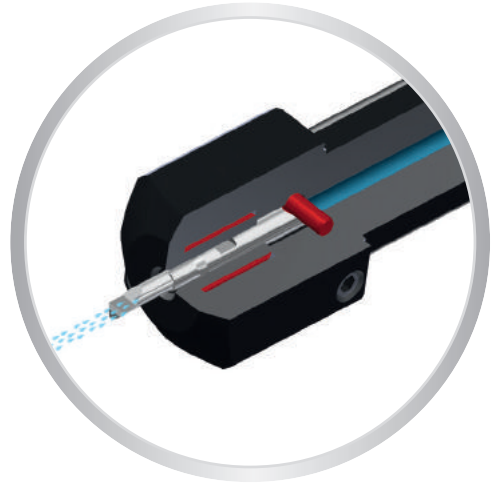
- Porte-outils à serrage hydraulique
- Halter mit Hydro-Dehnspann-System
- Tool holders with hydraulic clamping system

BHY



Excellente absorption des vibrations!
Ausgezeichnete Schwingungsdämpfung!
Excellent vibration absorbtion!

Arrosage par la barre d'alésage
Kühlung durch die Bohrstange
Cooling through the boring bar

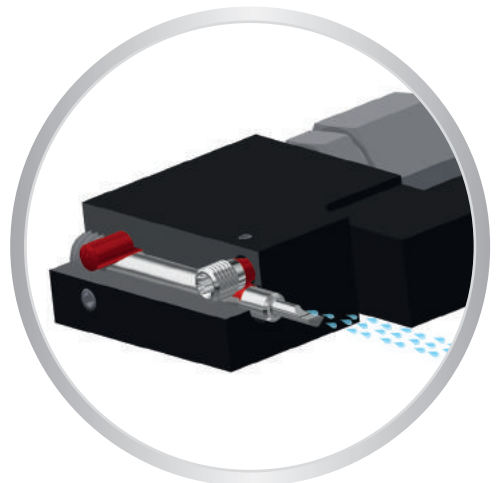
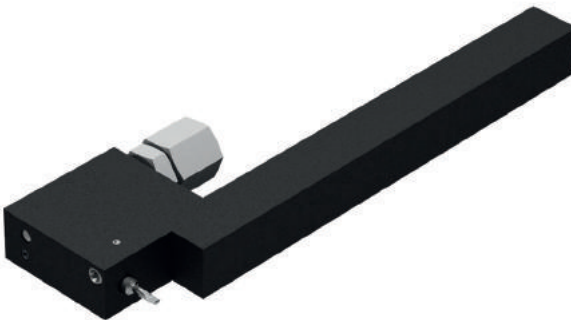


- Porte-outils coudés
- Gekröpfte Halter
- Cranked tool holders

BHK

Système de serrage à vis transversale
Querverschraubungssystem
Clamping system with transverse screw

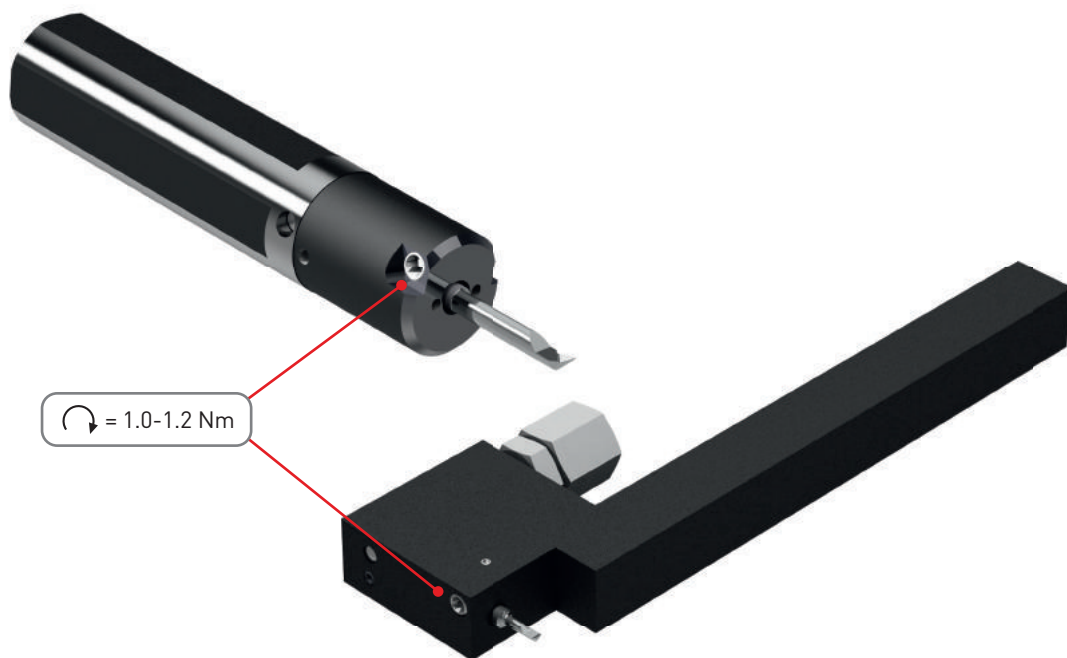
Arrosage par la barre d'alésage
Kühlung durch die Bohrstange
Cooling through the boring bar



Accessoires de serrage

Spannzubehöre

Clamping accessories



Nous recommandons le serrage des porte-outils types BHS et BHK avec ce type de tournevis dynamométrique.

Wir empfehlen für das Anziehen der Halter Typ BHS und BHK diese Art von Drehmomentschraubendreher.

For holders type BHS and BHK clamping, we recommend this kind of torque screwdriver.



Art. N°

SET-NM1.2-TX8

Nuances

Sorten

Grades

P

M

N

S

ZTAF

ZN + revêtement PVD
ZN + PVD Beschichtung
ZN + PVD coating

- nuance universelle pour l'usinage des aciers, aciers inoxydables, aciers alliés, alliage de titane
- bonne résistance à la température

- Universalsorte für die Bearbeitung von Stahl, rostfreiem Stahl, Stahllegierung, Titanlegierung
- gute Warmfestigkeit

- universal grade for steel, stainless steel, alloyed steel, titanium alloys
- good heat resistance

P

M

S

ZTAXF

ZN + revêtement PVD
ZN + PVD Beschichtung
ZN + PVD coating

- nuance très résistante à l'usure et à la température, recommandée pour l'usinage des matières suivantes: Inox 304, 316L, 317L, 904, Phynox
- aciers alliés contenant: Chrome Nickel, Vanadium, Molybdène, ...

- sehr verschleissfeste und temperaturbeständige Sorte. Für folgende Materialien empfohlen: Inox 304, 316L, 317L, 904, Phynox
- legierter Stahl enthaltend: Chrom-Nickel, Vanadium, Molybdän, ...

- very wear and high temperature resistant grade. Recommended for following material: Inox 304, 316L, 317L, 904, Phynox
- alloy steel containing: Chrome-nickel, Vanadium, Molybdenum, ...

P

N

S

ZN

non revêtu
unbeschichtet
uncoated

- nuance de base micro-grain tenace
- 1^{er} choix pour l'usinage des métaux non ferreux

- zähe Basis Feinkornsorte
- beste Wahl für die Bearbeitung von Nichteisenmetalle

- tough base micro-grain grade
- first choice for non-ferrous materials

Paramètres de coupe

Schnittwerte

Machining data

| Matière Werkstoff Material | VC (m/min) | Ø barre d'alésage Bohrstange Ø boring bar Ø | | |
|--|---------------|---|-----------------------|-----------------------|
| | | Ø1.0 - Ø2.0 (mm/U) | Ø2.5 - Ø4.0 (mm/U) | Ø4.5 - Ø5.5 (mm/U) |
| Acier de décolletage Automatenstahl Free-cutting steel (P) | 60-100 | 0.02-0.03 | 0.02-0.08 | 0.03-0.10 |
| Acier faiblement allié Leicht legierter Stahl Low alloyed steel (P) | 50-80 | 0.01-0.03 | 0.02-0.05 | 0.03-0.06 |
| Acier fortement allié Legierter Stahl High alloyed steel (P) | 40-60 | 0.01-0.02 | 0.02-0.04 | 0.02-0.06 |
| Acier inoxydable Rostfreistahl Stainless steel (M) | 40-90 | 0.01-0.03 | 0.02-0.05 | 0.03-0.08 |
| Aluminium (N) | 60-150 | 0.01-0.03 | 0.02-0.06 | 0.03-0.10 |
| Cuivre, laiton, bronze Kupfer, Messing, Bronze Copper, brass, bronze (N) | 60-150 | 0.01-0.03 | 0.02-0.05 | 0.03-0.08 |
| Titane Titan Titanium (S) | 30-70 | 0.01-0.03 | 0.02-0.05 | 0.03-0.10 |

Porte-outils avec écrou de serrage

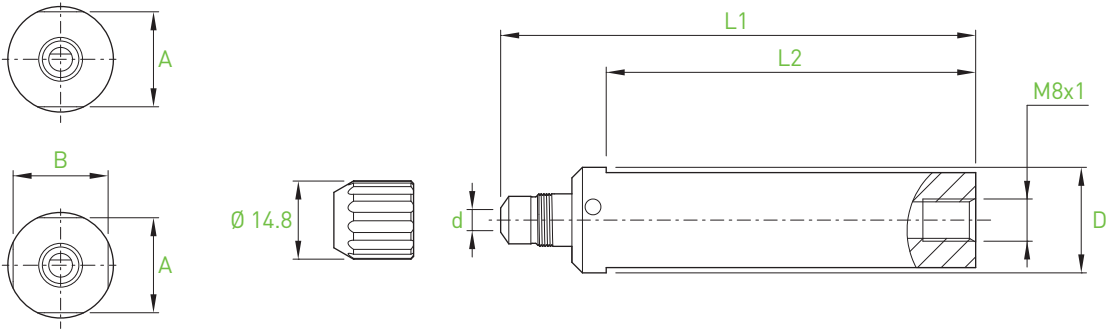
Halter mit Spannmutter

Tool holders with clamping nut

BH4-D



> page 10.05



| d | Bars | D | L1 | L2 | A x B | 2 flats | 4 flats | Art. N° |
|------|------------------|-------|-----------|-----|-----------|---------------|---------|----------------|
| 4 | BB4... BF4... | 10 | 75 | 55 | 8.8x8.8 | ■ | | BH4-D10-75 |
| | | 12 | 75 | 55 | 11.2x11.2 | ■ | | BH4-D12-75 |
| | | 12.7 | 75 | 55 | 11.2x11.2 | ■ | | BH4-D12.7-75 |
| | | 15.87 | 75 | 55 | 14x14 | ■ | | BH4-D15.87-75 |
| | | 16 | 75 | 55 | 14x14 | ■ | | BH4-D16-75 |
| | | 16 | 75 | 55 | 14x14 | | ■ | BH4-D16-75-F4 |
| | | 19.05 | 90 | 70 | 17x17 | ■ | | BH4-D19.05-90 |
| | | 20 | 90 | 70 | 18x18 | ■ | | BH4-D20-90 |
| | | 20 | 90 | 70 | 18x18 | | ■ | BH4-D20-90-F4 |
| | | 20 | 160 | 140 | 18x18 | | ■ | BH4-D20-160-F4 |
| | | 22 | 90 | 70 | 20x20 | ■ | | BH4-D22-90 |
| | | 22 | 90 | 70 | 20x20 | | ■ | BH4-D22-90-F4 |
| | | 22 | 130 | 110 | 20x20 | | ■ | BH4-D22-130-F4 |
| | | 25 | 100 | 80 | 23x23 | ■ | | BH4-D25-100 |
| | | 25 | 100 | 80 | 23x23 | | ■ | BH4-D25-100-F4 |
| | | 25 | 170 | 150 | 23x23 | | ■ | BH4-D25-170-F4 |
| 25.4 | 100 | 80 | 23.4x23.4 | ■ | | BH4-D25.4-100 | | |
| 28 | 100 | 80 | 26x26 | ■ | | BH4-D28-100 | | |

Pièces de rechange
Ersatzteile
Spare parts



Art. N°



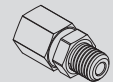
Art. N°

BH4...

BH4-M10

C-BH4-M10

Option



Art. N°

BH4...

J-M8X1-D6

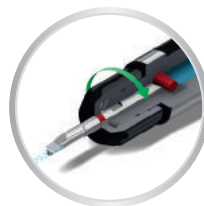
more option
see JET-Line

Porte-outils avec écrou de serrage

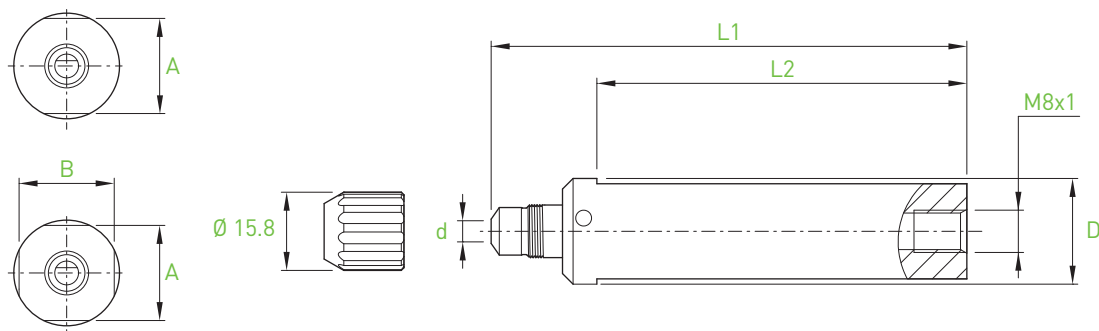
Halter mit Spannmutter

Tool holders with clamping nut

BH6-D



> page 10.05



| d | Bars | D | L1 | L2 | A x B | 2 flats | 4 flats | Art. N° |
|----|------------------|-------|-------|-----|-----------|-------------|---------|----------------|
| 6 | BB6... BF6... | 12 | 75 | 55 | 11.2x11.2 | ■ | | BH6-D12-75 |
| | | 12.7 | 75 | 55 | 11.2x11.2 | ■ | | BH6-D12.7-75 |
| | | 15.87 | 75 | 55 | 14x14 | ■ | | BH6-D15.87-75 |
| | | 16 | 75 | 55 | 14x14 | ■ | | BH6-D16-75 |
| | | 19.05 | 90 | 70 | 17x17 | ■ | | BH6-D19.05-90 |
| | | 20 | 90 | 70 | 18x18 | ■ | | BH6-D20-90 |
| | | 20 | 90 | 70 | 18x18 | | ■ | BH6-D20-90-F4 |
| | | 20 | 160 | 140 | 18x18 | | ■ | BH6-D20-160-F4 |
| | | 22 | 90 | 70 | 20x20 | ■ | | BH6-D22-90 |
| | | 22 | 90 | 70 | 20x20 | | ■ | BH6-D22-90-F4 |
| | | 22 | 130 | 110 | 20x20 | | ■ | BH6-D22-130-F4 |
| | | 25 | 100 | 80 | 23x23 | ■ | | BH6-D25-100 |
| | | 25 | 100 | 80 | 23x23 | | ■ | BH6-D25-100-F4 |
| | | 25 | 170 | 150 | 23x23 | | ■ | BH6-D25-170-F4 |
| | | 25.4 | 100 | 80 | 23.4x23.4 | ■ | | BH6-D25.4-100 |
| 28 | 100 | 80 | 26x26 | ■ | | BH6-D28-100 | | |

Pièces de rechange
Ersatzteile
Spare parts



Art. N°



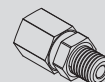
Art. N°

BH6...

BH6-M12

C-BH6-M12

Option



Art. N°

BH6...

J-M8X1-D6

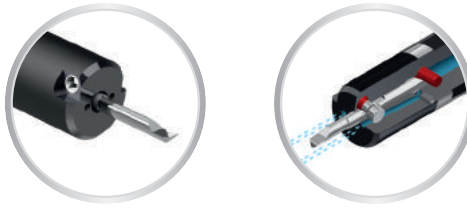
more option
see JET-Line

■ = disponible / verfügbar / available

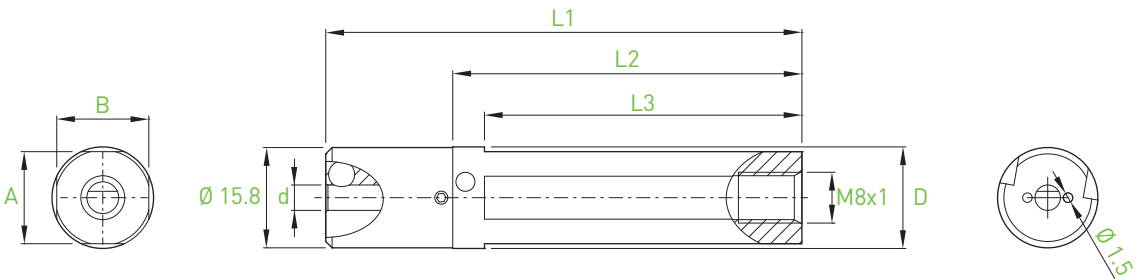
□ = selon disponibilité du stock / jenach Lagerverfügbarkeit / depending the stock availability

Porte-outils avec arrosage multiple
 Halter mit mehrfaches Kühlungssystem
 Tool holders with multiple coolant system

BHS4-D

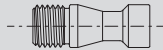


> page 10.05/10.07

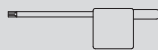


| d | Bars | D | L1 | L2 | L3 | A x B | Art. N° |
|----|------------------|-------|-----|-------|-----------------|-----------|-------------------|
| 4 | BB4... BF4... | 10 | 75 | 55 | 50 | 9.2x9.2 | BHS4-D10-75-F4 |
| | | 12 | 75 | 55 | 50 | 11x11 | BHS4-D12-75-F4 |
| | | 12.7 | 75 | 55 | 50 | 11.7x11.7 | BHS4-D12.7-75-F4 |
| | | 15.87 | 75 | 55 | 50 | 14.5x14.5 | BHS4-D15.87-75-F4 |
| | | 16 | 75 | 55 | 50 | 14.5x14.5 | BHS4-D16-75-F4 |
| | | 16 | 110 | 90 | 85 | 14.5x14.5 | BHS4-D16-110-F4 |
| | | 19.05 | 90 | 70 | 65 | 17x17 | BHS4-D19.05-90-F4 |
| | | 20 | 90 | 70 | 65 | 18x18 | BHS4-D20-90-F4 |
| | | 20 | 160 | 140 | 135 | 18x18 | BHS4-D20-160-F4 |
| | | 22 | 90 | 70 | 65 | 20x20 | BHS4-D22-90-F4 |
| | | 22 | 130 | 110 | 105 | 20x20 | BHS4-D22-130-F4 |
| | | 25 | 100 | 80 | 75 | 23x23 | BHS4-D25-100-F4 |
| | | 25 | 170 | 150 | 145 | 23x23 | BHS4-D25-170-F4 |
| | | 25.4 | 100 | 80 | 75 | 23x23 | BHS4-D25.4-100-F4 |
| 28 | 100 | 80 | 75 | 26x26 | BHS4-D28-100-F4 | | |

Pièces de rechange
 Ersatzteile
 Spare parts



Art. N°



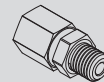
Art. N°

BHS4...

V-BHS-M4X0.5-T8

C-T8

Option



Art. N°



Art. N°

BHS4...

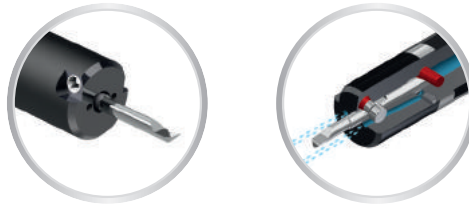
J-M8X1-D6

SET-NM1.2-TX8

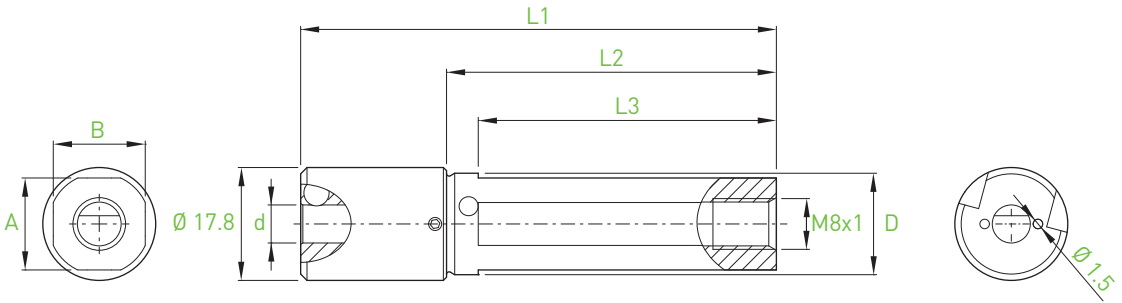
more option
 see JET-Line

Porte-outils avec arrosage multiple
 Halter mit mehrfaches Kühlungssystem
 Tool holders with multiple coolant system

BHS6-D

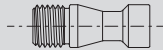


> page 10.05/10.07

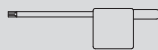


| d | Bars | D | L1 | L2 | L3 | A x B | Art. N° |
|----|------------------|-------|-----|-------|-----------------|-----------|-------------------|
| 6 | BB6... BF6... | 12 | 75 | 52 | 47 | 11x11 | BHS6-D12-75-F4 |
| | | 12.7 | 75 | 52 | 47 | 11.7x11.7 | BHS6-D12.7-75-F4 |
| | | 15.87 | 75 | 52 | 47 | 14.5x14.5 | BHS6-D15.87-75-F4 |
| | | 16 | 75 | 52 | 47 | 14.5x14.5 | BHS6-D16-75-F4 |
| | | 16 | 110 | 87 | 82 | 14.5x14.5 | BHS6-D16-110-F4 |
| | | 19.05 | 90 | 67 | 62 | 17x17 | BHS6-D19.05-90-F4 |
| | | 20 | 90 | 67 | 62 | 18x18 | BHS6-D20-90-F4 |
| | | 20 | 160 | 137 | 132 | 18x18 | BHS6-D20-160-F4 |
| | | 22 | 90 | 67 | 62 | 20x20 | BHS6-D22-90-F4 |
| | | 22 | 130 | 107 | 102 | 20x20 | BHS6-D22-130-F4 |
| | | 25 | 100 | 77 | 72 | 23x23 | BHS6-D25-100-F4 |
| | | 25 | 170 | 147 | 142 | 23x23 | BHS6-D25-170-F4 |
| | | 25.4 | 100 | 77 | 72 | 23x23 | BHS6-D25.4-100-F4 |
| 28 | 100 | 77 | 72 | 26x26 | BHS6-D28-100-F4 | | |

Pièces de rechange
 Ersatzteile
 Spare parts



Art. N°



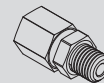
Art. N°

BHS6...

V-BHS-M4X0.5-T8

C-T8

Option



Art. N°



Art. N°

BHS6...

J-M8X1-D6

SET-NM1.2-TX8

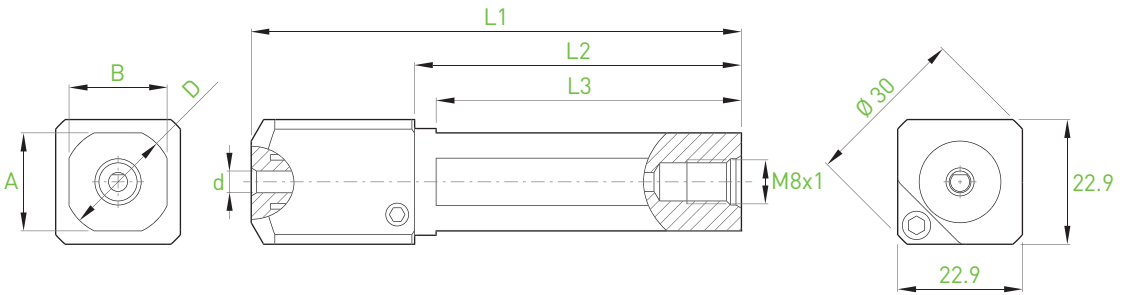
more option
 see JET-Line

Porte-outils à serrage hydraulique
 Halter mit Hydro-Dehnspann-System
 Tool holders with hydraulic clamping system

BHY4-D

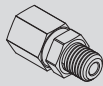


> page 10.06

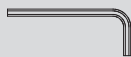


| d | Bars | D | L1 | L2 | L3 | A x B | Art. N° |
|---|------------------|-------|-----|----|----|-----------|-------------------|
| 4 | BB4... BF4... | 12 | 90 | 60 | 55 | 11.2x11.2 | BHY4-D12-90-F4 |
| | | 16 | 90 | 60 | 55 | 14.5x14.5 | BHY4-D16-90-F4 |
| | | 19.05 | 90 | 60 | 55 | 17x17 | BHY4-D19.05-90-F4 |
| | | 20 | 90 | 60 | 55 | 18x18 | BHY4-D20-90-F4 |
| | | 22 | 90 | 60 | 55 | 20x20 | BHY4-D22-90-F4 |
| | | 25 | 100 | 70 | 65 | 23x23 | BHY4-D25-100-F4 |

Pièces de rechange
 Ersatzteile
 Spare parts



Art. N°



Art. N°

BHY4...

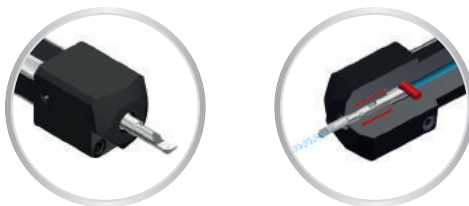
J-M8X1-D6

C-6P-3.0

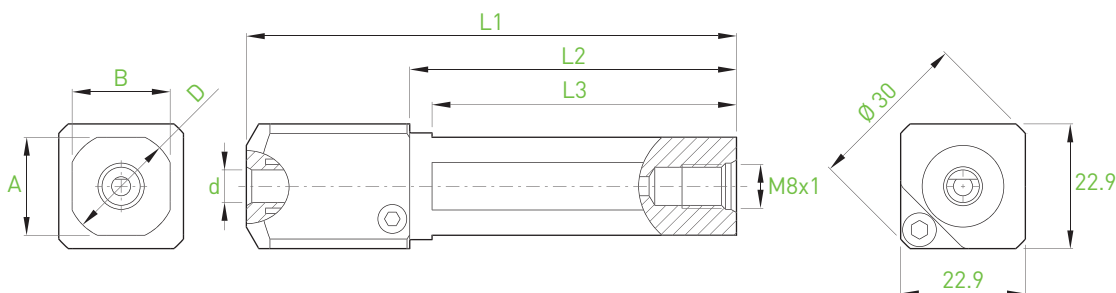
more option
 see JET-Line

Porte-outils à serrage hydraulique
 Halter mit Hydro-Dehnspann-System
 Tool holders with hydraulic clamping system

BHY6-D



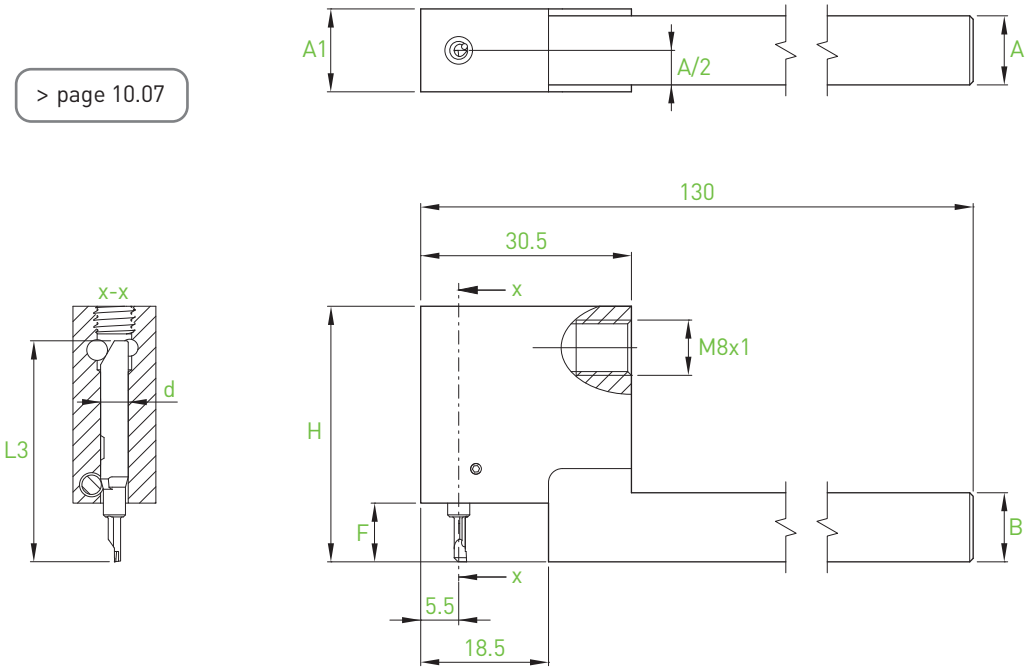
> page 10.06



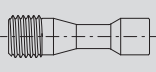
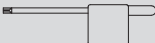
| d | Bars | D | L1 | L2 | L3 | A x B | Art. N° |
|---|------------------|-------|-----|----|----|-----------|-------------------|
| 6 | BB6... BF6... | 12 | 90 | 60 | 55 | 11.2x11.2 | BHY6-D12-90-F4 |
| | | 16 | 90 | 60 | 55 | 14.5x14.5 | BHY6-D16-90-F4 |
| | | 19.05 | 90 | 60 | 55 | 17x17 | BHY6-D19.05-90-F4 |
| | | 20 | 90 | 60 | 55 | 18x18 | BHY6-D20-90-F4 |
| | | 22 | 90 | 60 | 55 | 20x20 | BHY6-D22-90-F4 |
| | | 25 | 100 | 70 | 65 | 23x23 | BHY6-D25-100-F4 |

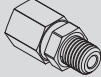

| | | |
|--|--|----------|
| Pièces de rechange Ersatzteile Spare parts | | |
| | Art. N° | Art. N° |
| BHY6... | J-M8X1-D6 more option see JET-Line | C-6P-3.0 |

> page 10.07



| d | Bars | L3 | A x B | F | H | A1 | Art. N° |
|---|--------------------|----|-------|------|----|----|-----------------|
| 4 | BB4R... BF4R... | 32 | 8x8 | 8.5 | 37 | 12 | BHK4N-0808X-32R |
| | | | 10x10 | 8.5 | 37 | 12 | BHK4N-1010X-32R |
| | | | 12x12 | 8.5 | 37 | 12 | BHK4N-1212X-32R |
| | | | 16x16 | 8.5 | 37 | 16 | BHK4N-1616X-32R |
| | | 37 | 8x8 | 13.5 | 42 | 12 | BHK4N-0808X-37R |
| | | | 10x10 | 13.5 | 42 | 12 | BHK4N-1010X-37R |
| | | | 12x12 | 13.5 | 42 | 12 | BHK4N-1212X-37R |
| | | | 16x16 | 13.5 | 42 | 16 | BHK4N-1616X-37R |
| | | 42 | 10x10 | 18.5 | 47 | 12 | BHK4N-1010X-42R |
| | | | 12x12 | 18.5 | 47 | 12 | BHK4N-1212X-42R |
| | | | 16x16 | 18.5 | 47 | 16 | BHK4N-1616X-42R |

| Pièces de rechange Ersatzteile Spare parts |  |  |
|--|---|---|
| | Art. N° | Art. N° |
| BHK4N... | V-BHK-M4X0.5-T8 | C-T8 |

| Option |  |  |
|----------|---|---|
| | Art. N° | Art. N° |
| BHK4N... | J-M8X1-D6 | SET-NM1.2-TX8 |
| | more option see JET-Line | |

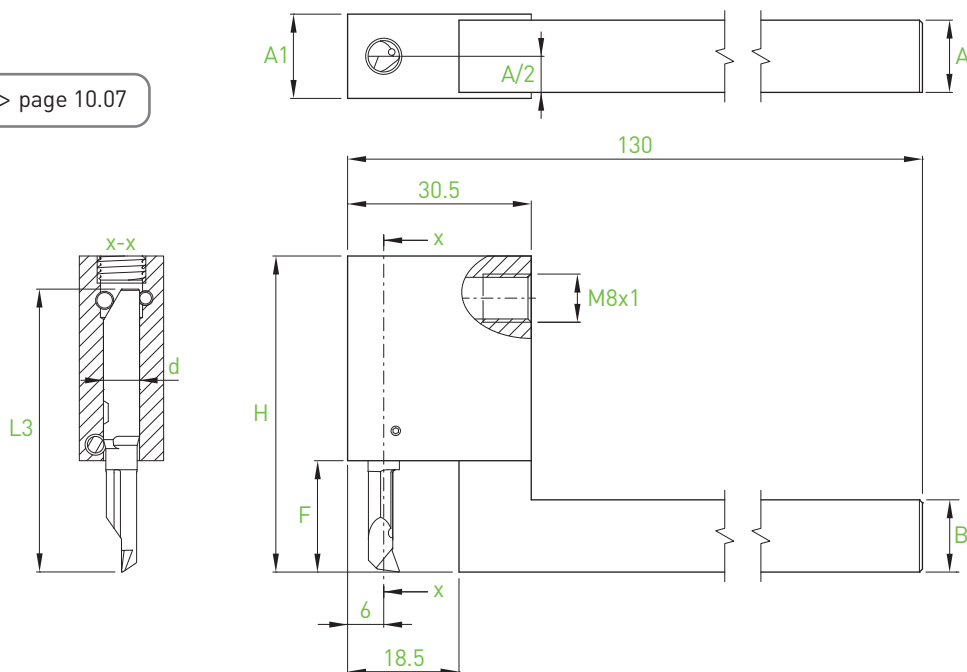
Porte-outils coudés

Kröpfunghalter

Cranked tool holders

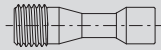
BHK6N

> page 10.07



| d | Bars | L3 | A x B | F | H | A1 | Art. N° |
|---|--------------------|----|-------|------|------|----|-----------------|
| 6 | BB6R... BF6R... | 47 | 10x10 | 18.5 | 52.5 | 12 | BHK6N-1010X-47R |
| | | | 12x12 | 18.5 | 52.5 | 12 | BHK6N-1212X-47R |
| | | | 16x16 | 18.5 | 52.5 | 16 | BHK6N-1616X-47R |
| | | 57 | 10x10 | 28.5 | 62.5 | 12 | BHK6N-1010X-57R |
| | | | 12x12 | 28.5 | 62.5 | 12 | BHK6N-1212X-57R |
| | | | 16x16 | 28.5 | 62.5 | 16 | BHK6N-1616X-57R |

Pièces de rechange
Ersatzteile
Spare parts



Art. N°



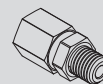
Art. N°

BHK6N...

V-BHK-M4X0.5-T8

C-T8

Option



Art. N°



Art. N°

BHK6N...

J-M8X1-D6

SET-NM1.2-TX8

more option
see JET-Line

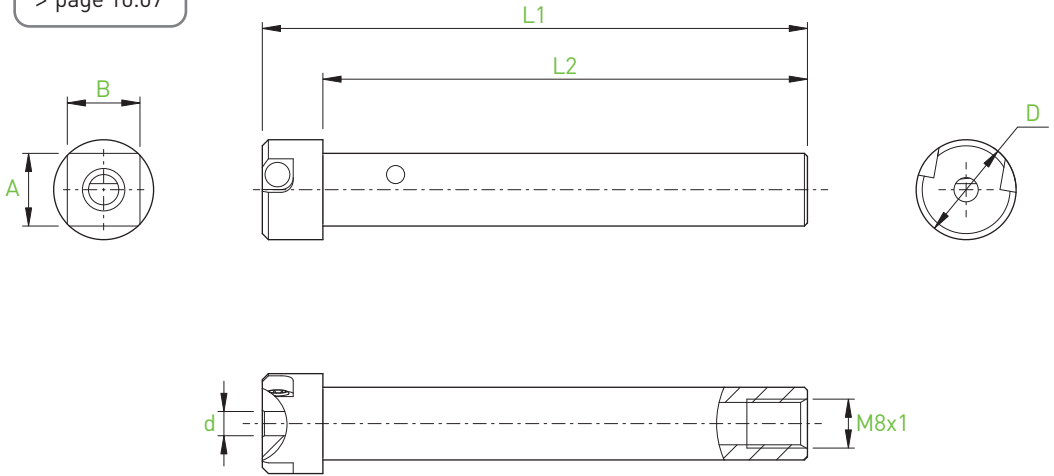
IN-LINE

Porte-outils section carrée
 Viereckige Halter
 Square holders

BHS4

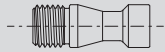
new

> page 10.07

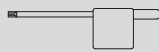


| d | Bars | A x B | L1 | L2 | D | Art. N° |
|---|---------------|-------|-----|----|------|---------------------|
| 4 | BB4... BF4... | 12x12 | 90 | 80 | 16.5 | BHS4-1212-90 |
| | | 16x16 | 100 | 90 | 15.5 | BHS4-1616-90 |

Pièces de rechange
 Ersatzteile
 Spare parts



Art. N°



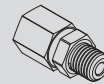
Art. N°

BHS4...

V-BHS-M4X0.5-T8

C-T8

Option



Art. N°



Art. N°

BHS4...

J-M8X1-D6

SET-NM1.2-TX8

more option
 see JET-Line

Porte-outils section carrée

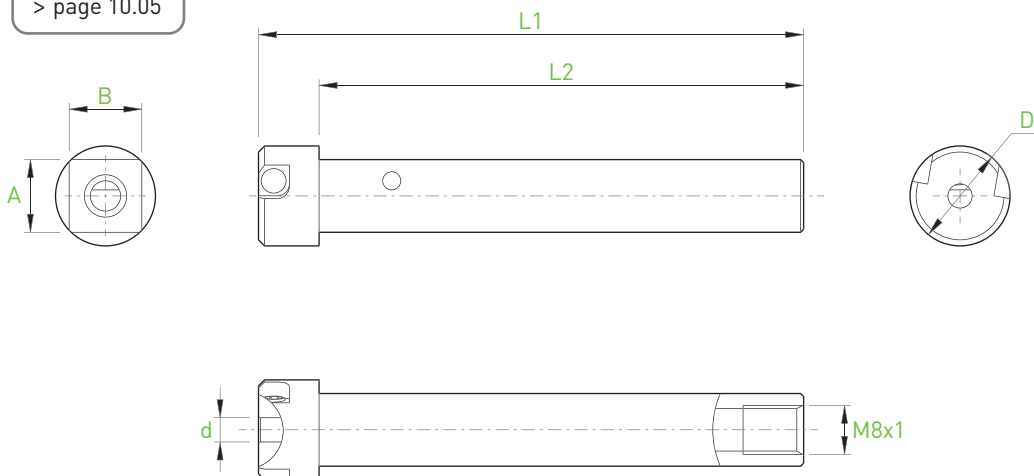
Viereckige Halter

Square holders

BHS6

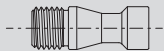
new

> page 10.05

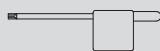


| d | Bars | A x B | L1 | L2 | D | Art. N° |
|---|---------------|----------------|-----------|---------|-----------|------------------------------|
| 6 | BB6... BF6... | 12x12 16x16 | 90 100 | 80 - | 17.5 - | BHS6-1212-90 BHS6-1616-90 |

Pièces de rechange
Ersatzteile
Spare parts



Art. N°



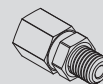
Art. N°

BHS6...

V-BHS-M4X0.5-T8

C-T8

Option



Art. N°



Art. N°

BHS6...

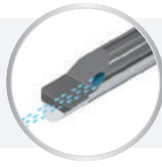
J-M8X1-D6

SET-NM1.2-TX8

more option
see JET-Line

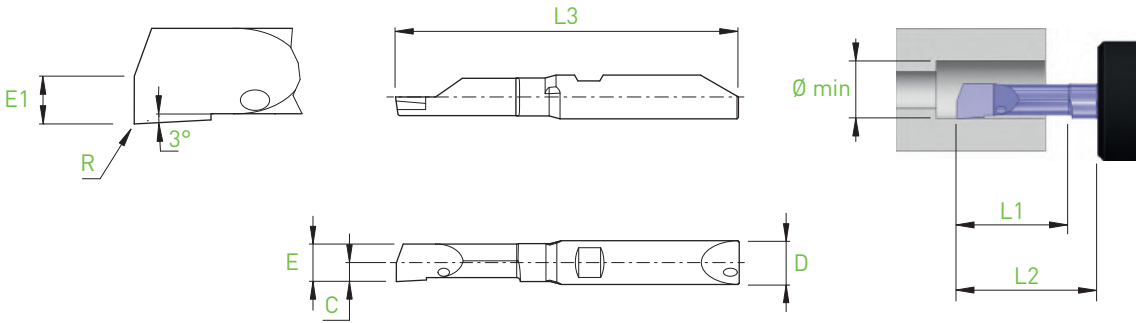
IN-LINE

Alésage
Ausbohren
Boring



BB4...

BA



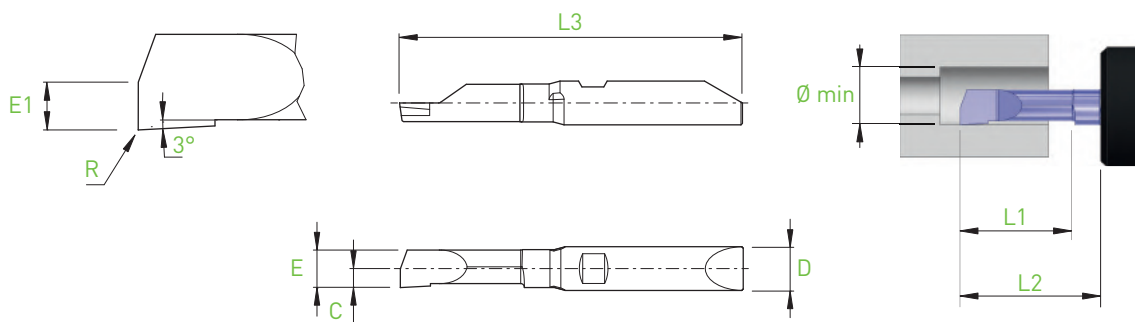
| D h5 | Holder | Ø min | L1 | L2 BH4... BHY4... | L2 BHS4... BHK4... | E | E1 | C | R | L3 | Art. N° | R | | | L | | |
|------|---|-------|------|-------------------------|--------------------------|------|------|------|---------------------|----|--------------------|------|-------|----|------|--------------|--|
| | | | | | | | | | | | | ZTAF | ZTAXF | ZN | ZTAF | ZN | |
| 4 | BH4... BHS4... BHY4... BHK4... | 0.3 | 0.9 | 10 | 8.5 | 0.27 | 0.13 | 0.15 | 0 | 32 | BB4R/L-0309-BA | ■ | ■ | ■ | □ | □ | |
| | | 0.4 | 1.2 | 10 | 8.5 | 0.36 | 0.18 | 0.20 | 0 | 32 | BB4R/L-0412-BA | ■ | ■ | ■ | □ | □ | |
| | | 0.5 | 1.5 | 10 | 8.5 | 0.45 | 0.22 | 0.25 | 0 | 32 | BB4R/L-0515-BA | ■ | ■ | ■ | □ | □ | |
| | | 0.6 | 1.8 | 10 | 8.5 | 0.54 | 0.27 | 0.30 | 0 | 32 | BB4R/L-0618-BA | ■ | ■ | ■ | □ | □ new | |
| | | 0.7 | 2.1 | 10 | 8.5 | 0.63 | 0.31 | 0.35 | 0 | 32 | BB4R/L-0721-BA | ■ | ■ | ■ | □ | □ new | |
| | | 0.8 | 2.4 | 10 | 8.5 | 0.72 | 0.36 | 0.40 | 0 | 32 | BB4R/L-0824-BA | ■ | ■ | ■ | □ | □ new | |
| | | 0.9 | 2.7 | 10 | 8.5 | 0.81 | 0.40 | 0.45 | 0 | 32 | BB4R/L-0927-BA | ■ | ■ | ■ | □ | □ new | |
| | | 1.0 | 3.0 | 10 | 8.5 | 0.90 | 0.45 | 0.60 | 0.02 | 32 | BB4R/L-1030-BA-R02 | ■ | ■ | ■ | □ | □ | |
| | | 1.2 | 3.6 | 10 | 8.5 | 1.08 | 0.54 | 0.60 | 0.02 | 32 | BB4R/L-1236-BA-R02 | ■ | ■ | ■ | □ | □ new | |
| | | 1.5 | 4.5 | 10 | 8.5 | 1.35 | 0.67 | 0.65 | 0.02 | 32 | BB4R/L-1545-BA-R02 | ■ | ■ | ■ | □ | □ | |
| | | 2.0 | 6.0 | 10 | 8.5 | 1.80 | 0.90 | 1.15 | 0.02 | 32 | BB4R/L-2060-BA-R02 | ■ | ■ | ■ | □ | □ | |
| | | 2.5 | 7.5 | 10 | 8.5 | 2.25 | 1.13 | 1.30 | 0.02 | 32 | BB4R/L-2575-BA-R02 | ■ | ■ | ■ | □ | □ | |
| | | 3.0 | 9.0 | 15 | 13.5 | 2.70 | 1.35 | 1.35 | 0.05 | 37 | BB4R/L-3090-BA-R05 | ■ | ■ | ■ | □ | □ | |
| 3.5 | 10.5 | 15 | 13.5 | 3.15 | 1.58 | 1.60 | 0.05 | 37 | BB4R/L-35105-BA-R05 | ■ | ■ | ■ | □ | □ | | | |

Alésage
Ausbohren
Boring



BF4...

BA

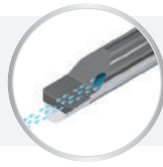


| D h5 | Holder | Ø min | L1 | L2 BH4... BHY4... | L2 BHS4... BHK4... | E | E1 | C | R | L3 | Art. N° | R | | | L | | |
|------|---|-------|------|-------------------------|--------------------------|------|------|------|---------------------|----|--------------------|------|-------|----|------|-------|--|
| | | | | | | | | | | | | ZTAF | ZTAXF | ZN | ZTAF | ZN | |
| 4 | BH4... BHS4... BHY4... BHK4... | 0.3 | 0.9 | 10 | 8.5 | 0.27 | 0.13 | 0.15 | 0 | 32 | BF4R/L-0309-BA | ■ | ■ | ■ | □ | □ | |
| | | 0.4 | 1.2 | 10 | 8.5 | 0.36 | 0.18 | 0.20 | 0 | 32 | BF4R/L-0412-BA | ■ | ■ | ■ | □ | □ | |
| | | 0.5 | 1.5 | 10 | 8.5 | 0.45 | 0.22 | 0.25 | 0 | 32 | BF4R/L-0515-BA | ■ | ■ | ■ | □ | □ | |
| | | 0.6 | 1.8 | 10 | 8.5 | 0.54 | 0.27 | 0.30 | 0 | 32 | BF4R/L-0618-BA | ■ | ■ | ■ | □ | □ new | |
| | | 0.7 | 2.1 | 10 | 8.5 | 0.63 | 0.31 | 0.35 | 0 | 32 | BF4R/L-0721-BA | ■ | ■ | ■ | □ | □ new | |
| | | 0.8 | 2.4 | 10 | 8.5 | 0.72 | 0.36 | 0.40 | 0 | 32 | BF4R/L-0824-BA | ■ | ■ | ■ | □ | □ new | |
| | | 0.9 | 2.7 | 10 | 8.5 | 0.81 | 0.40 | 0.45 | 0 | 32 | BF4R/L-0927-BA | ■ | ■ | ■ | □ | □ new | |
| | | 1.0 | 3.0 | 10 | 8.5 | 0.90 | 0.45 | 0.60 | 0.02 | 32 | BF4R/L-1030-BA-R02 | ■ | ■ | ■ | □ | □ | |
| | | 1.2 | 3.6 | 10 | 8.5 | 1.08 | 0.54 | 0.60 | 0.02 | 32 | BF4R/L-1236-BA-R02 | ■ | ■ | ■ | □ | □ new | |
| | | 1.5 | 4.5 | 10 | 8.5 | 1.35 | 0.67 | 0.65 | 0.02 | 32 | BF4R/L-1545-BA-R02 | ■ | ■ | ■ | □ | □ | |
| | | 2.0 | 6.0 | 10 | 8.5 | 1.80 | 0.90 | 1.15 | 0.02 | 32 | BF4R/L-2060-BA-R02 | ■ | ■ | ■ | □ | □ | |
| | | 2.5 | 7.5 | 10 | 8.5 | 2.25 | 1.13 | 1.30 | 0.02 | 32 | BF4R/L-2575-BA-R02 | ■ | ■ | ■ | □ | □ | |
| | | 3.0 | 9.0 | 15 | 13.5 | 2.70 | 1.35 | 1.35 | 0.05 | 37 | BF4R/L-3090-BA-R05 | ■ | ■ | ■ | □ | □ | |
| 3.5 | 10.5 | 15 | 13.5 | 3.15 | 1.58 | 1.60 | 0.05 | 37 | BF4R/L-35105-BA-R05 | ■ | ■ | ■ | □ | □ | | | |

■ = disponible / verfügbar / available
□ = selon disponibilité du stock / jenach Lagerverfügbarkeit / depending the stock availability

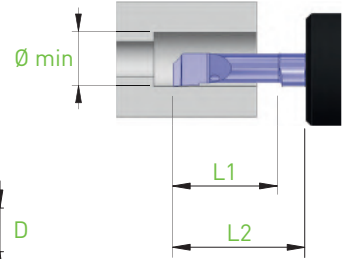
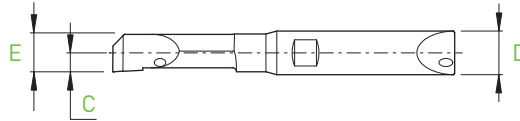
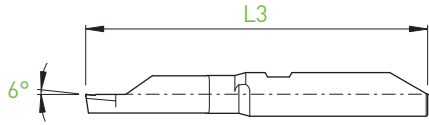
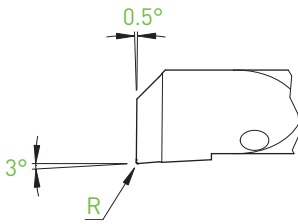
IN-LINE

Alésage
Ausbohren
Boring



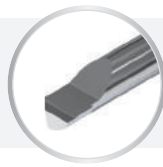
BB4... / BB6...

BAX



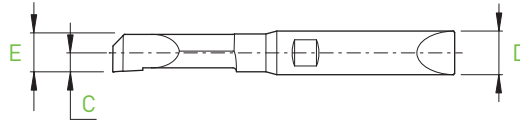
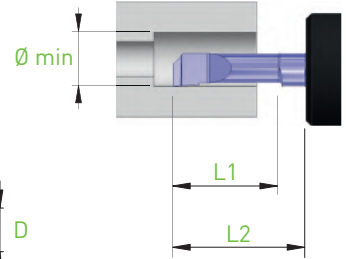
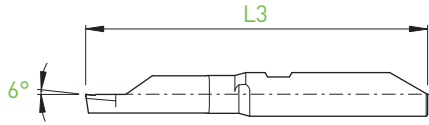
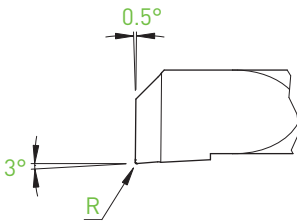
| D _{h5} | Holder | Ø min | L1 | L2 BH4... BHY4... | L2 BHS4... BHK4... | E | C | R | L3 | Art. N° | R | | | L | | |
|-----------------|---|-------|------|-------------------------|--------------------------|------|------|----------------------|----|----------------------|------|-------|----|------|----|--|
| | | | | | | | | | | | ZTAF | ZTAXF | ZN | ZTAF | ZN | |
| 4 | BH4... BHS4... BHY4... BHK4... | 0.5 | 1.5 | 10 | 8.5 | 0.45 | 0.25 | 0 | 32 | BB4R/L-0515-BAX | ■ | ■ | ■ | □ | □ | |
| | | 0.6 | 1.8 | 10 | 8.5 | 0.54 | 0.30 | 0 | 32 | BB4R/L-0618-BAX | ■ | ■ | ■ | □ | □ | |
| | | 0.7 | 2.1 | 10 | 8.5 | 0.63 | 0.35 | 0 | 32 | BB4R/L-0721-BAX | ■ | ■ | ■ | □ | □ | |
| | | 0.8 | 2.4 | 10 | 8.5 | 0.72 | 0.40 | 0 | 32 | BB4R/L-0824-BAX | ■ | ■ | ■ | □ | □ | |
| | | 0.9 | 2.7 | 10 | 8.5 | 0.81 | 0.45 | 0 | 32 | BB4R/L-0927-BAX | ■ | ■ | ■ | □ | □ | |
| | | 1.0 | 3.0 | 10 | 8.5 | 0.90 | 0.60 | 0.02 | 32 | BB4R/L-1030-BAX-R02 | ■ | ■ | ■ | □ | □ | |
| | | | 5.0 | 10 | 8.5 | 0.90 | 0.60 | 0.02 | 32 | BB4R/L-1050-BAX-R02 | ■ | ■ | ■ | □ | □ | |
| | | 1.5 | 4.5 | 10 | 8.5 | 1.35 | 0.65 | 0.02 | 32 | BB4R/L-1545-BAX-R02 | ■ | ■ | ■ | □ | □ | |
| | | | 7.5 | 10 | 8.5 | 1.35 | 0.65 | 0.02 | 32 | BB4R/L-1575-BAX-R02 | ■ | ■ | ■ | □ | □ | |
| | | 2.0 | 6.0 | 10 | 8.5 | 1.80 | 1.15 | 0.02 | 32 | BB4R/L-2060-BAX-R02 | ■ | ■ | ■ | □ | □ | |
| | | | 10.0 | 15 | 13.5 | 1.80 | 1.15 | 0.02 | 37 | BB4R/L-20100-BAX-R02 | ■ | ■ | ■ | □ | □ | |
| | | 2.5 | 7.5 | 10 | 8.5 | 2.25 | 1.30 | 0.05 | 32 | BB4R/L-2575-BAX-R05 | ■ | ■ | ■ | □ | □ | |
| | | | 12.5 | 15 | 13.5 | 2.25 | 1.30 | 0.05 | 37 | BB4R/L-25125-BAX-R05 | ■ | ■ | ■ | □ | □ | |
| | | 3.0 | 9.0 | 15 | 13.5 | 2.70 | 1.35 | 0.05 | 37 | BB4R/L-3090-BAX-R05 | ■ | ■ | ■ | □ | □ | |
| | | | 15.0 | 20 | 18.5 | 2.70 | 1.35 | 0.05 | 42 | BB4R/L-30150-BAX-R05 | ■ | ■ | ■ | □ | □ | |
| | | 3.5 | 10.5 | 15 | 13.5 | 3.15 | 1.60 | 0.05 | 37 | BB4R/L-35105-BAX-R05 | ■ | ■ | ■ | □ | □ | |
| 17.5 | 20 | | 18.5 | 3.15 | 1.60 | 0.05 | 42 | BB4R/L-35175-BAX-R05 | ■ | ■ | ■ | □ | □ | | | |
| 6 | BH6... BHS6... BHY6... BHK6... | 4.0 | 12.0 | 20 | 18.5 | 3.80 | 2.20 | 0.05 | 47 | BB6R/L-40120-BAX-R05 | ■ | ■ | ■ | □ | □ | |
| | | | 20.0 | 30 | 28.5 | 3.80 | 2.20 | 0.05 | 57 | BB6R/L-40200-BAX-R05 | ■ | ■ | ■ | □ | □ | |
| | | 4.5 | 13.5 | 20 | 18.5 | 4.28 | 2.30 | 0.05 | 47 | BB6R/L-45135-BAX-R05 | ■ | ■ | ■ | □ | □ | |
| | | | 22.5 | 30 | 28.5 | 4.28 | 2.30 | 0.05 | 57 | BB6R/L-45225-BAX-R05 | ■ | ■ | ■ | □ | □ | |
| | | 5.0 | 15.0 | 20 | 18.5 | 4.75 | 2.40 | 0.05 | 47 | BB6R/L-50150-BAX-R05 | ■ | ■ | ■ | □ | □ | |
| | | | 25.0 | 30 | 28.5 | 4.75 | 2.40 | 0.05 | 57 | BB6R/L-50250-BAX-R05 | ■ | ■ | ■ | □ | □ | |
| | | 5.5 | 16.5 | 20 | 18.5 | 5.15 | 2.60 | 0.05 | 47 | BB6R/L-55165-BAX-R05 | ■ | ■ | ■ | □ | □ | |
| | | | 27.5 | 30 | 28.5 | 5.15 | 2.60 | 0.05 | 57 | BB6R/L-55275-BAX-R05 | ■ | ■ | ■ | □ | □ | |

Alésage
Ausbohren
Boring



BF4... / BF6...

BAX



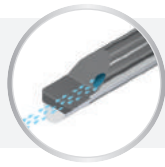
| D h5 | Holder | Ø min | L1 | L2 BH4... BHY4... | L2 BHS4... BHK4... | E | C | R | L3 | Art. N° | R | | | L | | |
|------|---|-------|------|-------------------------|--------------------------|------|------|----------------------|----|----------------------|------|-------|----|------|----|--|
| | | | | | | | | | | | ZTAF | ZTAXF | ZN | ZTAF | ZN | |
| 4 | BH4... BHS4... BHY4... BHK4... | 0.5 | 1.5 | 10 | 8.5 | 0.45 | 0.25 | 0 | 32 | BF4R/L-0515-BAX | ■ | ■ | ■ | □ | □ | |
| | | 0.6 | 1.8 | 10 | 8.5 | 0.54 | 0.30 | 0 | 32 | BF4R/L-0618-BAX | ■ | ■ | ■ | □ | □ | |
| | | 0.7 | 2.1 | 10 | 8.5 | 0.63 | 0.35 | 0 | 32 | BF4R/L-0721-BAX | ■ | ■ | ■ | □ | □ | |
| | | 0.8 | 2.4 | 10 | 8.5 | 0.72 | 0.40 | 0 | 32 | BF4R/L-0824-BAX | ■ | ■ | ■ | □ | □ | |
| | | 0.9 | 2.7 | 10 | 8.5 | 0.81 | 0.45 | 0 | 32 | BF4R/L-0927-BAX | ■ | ■ | ■ | □ | □ | |
| | | 1.0 | 3.0 | 10 | 8.5 | 0.90 | 0.60 | 0.02 | 32 | BF4R/L-1030-BAX-R02 | ■ | ■ | ■ | □ | □ | |
| | | | 5.0 | 10 | 8.5 | 0.90 | 0.60 | 0.02 | 32 | BF4R/L-1050-BAX-R02 | ■ | ■ | ■ | □ | □ | |
| | | 1.5 | 4.5 | 10 | 8.5 | 1.35 | 0.65 | 0.02 | 32 | BF4R/L-1545-BAX-R02 | ■ | ■ | ■ | □ | □ | |
| | | | 7.5 | 10 | 8.5 | 1.35 | 0.65 | 0.02 | 32 | BF4R/L-1575-BAX-R02 | ■ | ■ | ■ | □ | □ | |
| | | 2.0 | 6.0 | 10 | 8.5 | 1.80 | 1.15 | 0.02 | 32 | BF4R/L-2060-BAX-R02 | ■ | ■ | ■ | □ | □ | |
| | | | 10.0 | 15 | 13.5 | 1.80 | 1.15 | 0.02 | 37 | BF4R/L-20100-BAX-R02 | ■ | ■ | ■ | □ | □ | |
| | | 2.5 | 7.5 | 10 | 8.5 | 2.25 | 1.30 | 0.05 | 32 | BF4R/L-2575-BAX-R05 | ■ | ■ | ■ | □ | □ | |
| | | | 12.5 | 15 | 13.5 | 2.25 | 1.30 | 0.05 | 37 | BF4R/L-25125-BAX-R05 | ■ | ■ | ■ | □ | □ | |
| | | 3.0 | 9.0 | 15 | 13.5 | 2.70 | 1.35 | 0.05 | 37 | BF4R/L-3090-BAX-R05 | ■ | ■ | ■ | □ | □ | |
| 15.0 | 20 | | 18.5 | 2.70 | 1.35 | 0.05 | 42 | BF4R/L-30150-BAX-R05 | ■ | ■ | ■ | □ | □ | | | |
| 3.5 | 10.5 | 15 | 13.5 | 3.15 | 1.60 | 0.05 | 37 | BF4R/L-35105-BAX-R05 | ■ | ■ | ■ | □ | □ | | | |
| | 17.5 | 20 | 18.5 | 3.15 | 1.60 | 0.05 | 42 | BF4R/L-35175-BAX-R05 | ■ | ■ | ■ | □ | □ | | | |

| D h5 | Holder | Ø min | L1 | L2 BH6... BHY6... | L2 BHS6... BHK6... | E | C | R | L3 | Art. N° | ZTAF | ZTAXF | ZN | ZTAF | ZN |
|------|---|-------|------|-------------------------|--------------------------|------|------|------|----|----------------------|------|-------|----|------|----|
| | | | | | | | | | | | ■ | ■ | ■ | ■ | ■ |
| 6 | BH6... BHS6... BHY6... BHK6... | 4.0 | 12.0 | 20 | 18.5 | 3.80 | 2.20 | 0.05 | 47 | BF6R/L-40120-BAX-R05 | ■ | ■ | ■ | □ | □ |
| | | | 20.0 | 30 | 28.5 | 3.80 | 2.20 | 0.05 | 57 | BF6R/L-40200-BAX-R05 | ■ | ■ | ■ | □ | □ |
| | | 4.5 | 13.5 | 20 | 18.5 | 4.28 | 2.30 | 0.05 | 47 | BF6R/L-45135-BAX-R05 | ■ | ■ | ■ | □ | □ |
| | | | 22.5 | 30 | 28.5 | 4.28 | 2.30 | 0.05 | 57 | BF6R/L-45225-BAX-R05 | ■ | ■ | ■ | □ | □ |
| | | 5.0 | 15.0 | 20 | 18.5 | 4.75 | 2.40 | 0.05 | 47 | BF6R/L-50150-BAX-R05 | ■ | ■ | ■ | □ | □ |
| | | | 25.0 | 30 | 28.5 | 4.75 | 2.40 | 0.05 | 57 | BF6R/L-50250-BAX-R05 | ■ | ■ | ■ | □ | □ |
| | | 5.5 | 16.5 | 20 | 18.5 | 5.15 | 2.60 | 0.05 | 47 | BF6R/L-55165-BAX-R05 | ■ | ■ | ■ | □ | □ |
| | | | 27.5 | 30 | 28.5 | 5.15 | 2.60 | 0.05 | 57 | BF6R/L-55275-BAX-R05 | ■ | ■ | ■ | □ | □ |

■ = disponible / verfügbar / available
□ = selon disponibilité du stock / jenach Lagerverfügbarkeit / depending the stock availability

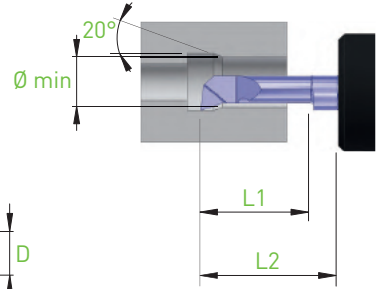
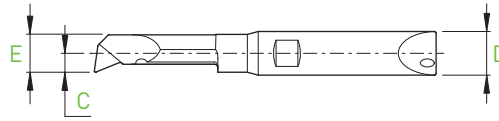
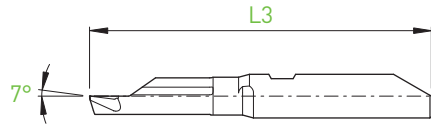
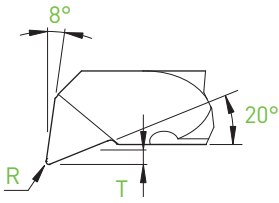
IN-LINE

- Alésage-copiage
- Ausbohren-kopieren
- Boring chamfering



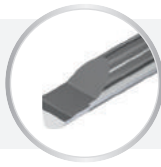
BB4... / BB6...

BCX



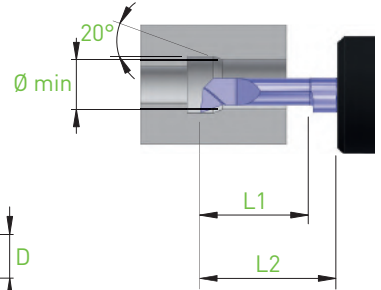
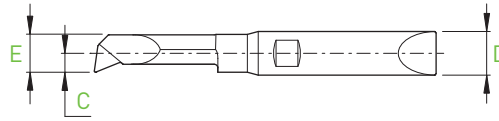
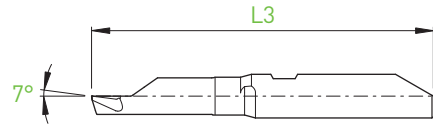
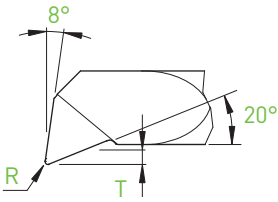
| D h5 | Holder | Ø min | L1 | L2 BH4... BHY4... | L2 BHS4... BHK4... | T | E | C | R | L3 | Art. N° | R | | L | | | | |
|------|---|-------|---|-------------------------|--------------------------|-------------------------|--------------------------|------|------|------|----------------------|------|----------------------|------|-------|----|------|----|
| | | | | | | | | | | | | ZTAF | ZTAXF | ZN | ZTAF | ZN | | |
| 4 | BH4... BHS4... BHY4... BHK4... | 1.0 | 3.0 | 10 | 8.5 | 0.15 | 0.90 | 0.70 | 0.05 | 32 | BB4R/L-1030-BCX-R05 | ■ | ■ | ■ | □ | □ | | |
| | | | 5.0 | 10 | 8.5 | 0.15 | 0.90 | 0.70 | 0.05 | 32 | BB4R/L-1050-BCX-R05 | ■ | ■ | ■ | □ | □ | | |
| | | 1.5 | 4.5 | 10 | 8.5 | 0.23 | 1.35 | 0.75 | 0.05 | 32 | BB4R/L-1545-BCX-R05 | ■ | ■ | ■ | □ | □ | | |
| | | | 7.5 | 10 | 8.5 | 0.23 | 1.35 | 0.75 | 0.05 | 32 | BB4R/L-1575-BCX-R05 | ■ | ■ | ■ | □ | □ | | |
| | | 2.0 | 6.0 | 10 | 8.5 | 0.30 | 1.80 | 1.15 | 0.05 | 32 | BB4R/L-2060-BCX-R05 | ■ | ■ | ■ | □ | □ | | |
| | | | 10.0 | 15 | 13.5 | 0.30 | 1.80 | 1.15 | 0.05 | 37 | BB4R/L-20100-BCX-R05 | ■ | ■ | ■ | □ | □ | | |
| | | 2.5 | 7.5 | 10 | 8.5 | 0.38 | 2.25 | 1.30 | 0.10 | 32 | BB4R/L-2575-BCX-R10 | ■ | ■ | ■ | □ | □ | | |
| | | | 12.5 | 15 | 13.5 | 0.38 | 2.25 | 1.30 | 0.10 | 37 | BB4R/L-25125-BCX-R10 | ■ | ■ | ■ | □ | □ | | |
| | | 3.0 | 9.0 | 15 | 13.5 | 0.45 | 2.70 | 1.35 | 0.10 | 37 | BB4R/L-3090-BCX-R10 | ■ | ■ | ■ | □ | □ | | |
| | | | 15.0 | 20 | 18.5 | 0.45 | 2.70 | 1.35 | 0.10 | 42 | BB4R/L-30150-BCX-R10 | ■ | ■ | ■ | □ | □ | | |
| | | 3.5 | 10.5 | 15 | 13.5 | 0.53 | 3.15 | 1.60 | 0.10 | 37 | BB4R/L-35105-BCX-R10 | ■ | ■ | ■ | □ | □ | | |
| | | | 17.5 | 20 | 18.5 | 0.53 | 3.15 | 1.60 | 0.10 | 42 | BB4R/L-35175-BCX-R10 | ■ | ■ | ■ | □ | □ | | |
| | | D h5 | Holder | Ø min | L1 | L2 BH6... BHY6... | L2 BHS6... BHK6... | T | E | C | R | L3 | Art. N° | ZTAF | ZTAXF | ZN | ZTAF | ZN |
| | | 6 | BH6... BHS6... BHY6... BHK6... | 4.0 | 12.0 | 20 | 18.5 | 0.60 | 3.80 | 2.20 | 0.15 | 47 | BB6R/L-40120-BCX-R15 | ■ | ■ | ■ | □ | □ |
| 20.0 | 30 | | | | 28.5 | 0.60 | 3.80 | 2.20 | 0.15 | 57 | BB6R/L-40200-BCX-R15 | ■ | ■ | ■ | □ | □ | | |
| 4.5 | 13.5 | | | 20 | 18.5 | 0.68 | 4.28 | 2.30 | 0.15 | 47 | BB6R/L-45135-BCX-R15 | ■ | ■ | ■ | □ | □ | | |
| | 22.5 | | | 30 | 28.5 | 0.68 | 4.28 | 2.30 | 0.15 | 57 | BB6R/L-45225-BCX-R15 | ■ | ■ | ■ | □ | □ | | |
| 5.0 | 15.0 | | | 20 | 18.5 | 0.75 | 4.75 | 2.40 | 0.15 | 47 | BB6R/L-50150-BCX-R15 | ■ | ■ | ■ | □ | □ | | |
| | 25.0 | | | 30 | 28.5 | 0.75 | 4.75 | 2.40 | 0.15 | 57 | BB6R/L-50250-BCX-R15 | ■ | ■ | ■ | □ | □ | | |
| 5.5 | 16.5 | | | 20 | 18.5 | 0.83 | 5.15 | 2.60 | 0.15 | 47 | BB6R/L-55165-BCX-R15 | ■ | ■ | ■ | □ | □ | | |
| | 27.5 | | | 30 | 28.5 | 0.83 | 5.15 | 2.60 | 0.15 | 57 | BB6R/L-55275-BCX-R15 | ■ | ■ | ■ | □ | □ | | |

Alésage-copiage
 Ausbohren-kopieren
 Boring chambering



BF4... / BF6...

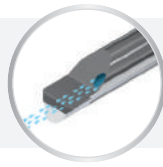
BCX



| D h5 | Holder | Ø min | L1 | L2 BH4... BHY4... | L2 BHS4... BHK4... | T | E | C | R | L3 | Art. N° | R | | L | | |
|------|---|-------|------|-------------------------|--------------------------|------|------|------|------|----|----------------------|------|-------|----|------|----|
| | | | | | | | | | | | | ZTAF | ZTAXF | ZN | ZTAF | ZN |
| 4 | BH4... BHS4... BHY4... BHK4... | 1.0 | 3.0 | 10 | 8.5 | 0.15 | 0.90 | 0.70 | 0.05 | 32 | BF4R/L-1030-BCX-R05 | ■ | ■ | ■ | □ | □ |
| | | | 5.0 | 10 | 8.5 | 0.15 | 0.90 | 0.70 | 0.05 | 32 | BF4R/L-1050-BCX-R05 | ■ | ■ | ■ | □ | □ |
| | | 1.5 | 4.5 | 10 | 8.5 | 0.23 | 1.35 | 0.75 | 0.05 | 32 | BF4R/L-1545-BCX-R05 | ■ | ■ | ■ | □ | □ |
| | | | 7.5 | 10 | 8.5 | 0.23 | 1.35 | 0.75 | 0.05 | 32 | BF4R/L-1575-BCX-R05 | ■ | ■ | ■ | □ | □ |
| | | 2.0 | 6.0 | 10 | 8.5 | 0.30 | 1.80 | 1.15 | 0.05 | 32 | BF4R/L-2060-BCX-R05 | ■ | ■ | ■ | □ | □ |
| | | | 10.0 | 15 | 13.5 | 0.30 | 1.80 | 1.15 | 0.05 | 37 | BF4R/L-20100-BCX-R05 | ■ | ■ | ■ | □ | □ |
| | | 2.5 | 7.5 | 10 | 8.5 | 0.38 | 2.25 | 1.30 | 0.10 | 32 | BF4R/L-2575-BCX-R10 | ■ | ■ | ■ | □ | □ |
| | | | 12.5 | 15 | 13.5 | 0.38 | 2.25 | 1.30 | 0.10 | 37 | BF4R/L-25125-BCX-R10 | ■ | ■ | ■ | □ | □ |
| | | 3.0 | 9.0 | 15 | 13.5 | 0.45 | 2.70 | 1.35 | 0.10 | 37 | BF4R/L-3090-BCX-R10 | ■ | ■ | ■ | □ | □ |
| | | | 15.0 | 20 | 18.5 | 0.45 | 2.70 | 1.35 | 0.10 | 42 | BF4R/L-30150-BCX-R10 | ■ | ■ | ■ | □ | □ |
| | | 3.5 | 10.5 | 15 | 13.5 | 0.53 | 3.15 | 1.60 | 0.10 | 37 | BF4R/L-35105-BCX-R10 | ■ | ■ | ■ | □ | □ |
| | | | 17.5 | 20 | 18.5 | 0.53 | 3.15 | 1.60 | 0.10 | 42 | BF4R/L-35175-BCX-R10 | ■ | ■ | ■ | □ | □ |
| D h5 | Holder | Ø min | L1 | L2 BH6... BHY6... | L2 BHS6... BHK6... | T | E | C | R | L3 | Art. N° | ZTAF | ZTAXF | ZN | ZTAF | ZN |
| 6 | BH6... BHS6... BHY6... BHK6... | 4.0 | 12.0 | 20 | 18.5 | 0.60 | 3.80 | 2.20 | 0.15 | 47 | BF6R/L-40120-BCX-R15 | ■ | ■ | ■ | □ | □ |
| | | | 20.0 | 30 | 28.5 | 0.60 | 3.80 | 2.20 | 0.15 | 57 | BF6R/L-40200-BCX-R15 | ■ | ■ | ■ | □ | □ |
| | | 4.5 | 13.5 | 20 | 18.5 | 0.68 | 4.28 | 2.30 | 0.15 | 47 | BF6R/L-45135-BCX-R15 | ■ | ■ | ■ | □ | □ |
| | | | 22.5 | 30 | 28.5 | 0.68 | 4.28 | 2.30 | 0.15 | 57 | BF6R/L-45225-BCX-R15 | ■ | ■ | ■ | □ | □ |
| | | 5.0 | 15.0 | 20 | 18.5 | 0.75 | 4.75 | 2.40 | 0.15 | 47 | BF6R/L-50150-BCX-R15 | ■ | ■ | ■ | □ | □ |
| | | | 25.0 | 30 | 28.5 | 0.75 | 4.75 | 2.40 | 0.15 | 57 | BF6R/L-50250-BCX-R15 | ■ | ■ | ■ | □ | □ |
| | | 5.5 | 16.5 | 20 | 18.5 | 0.83 | 5.15 | 2.60 | 0.15 | 47 | BF6R/L-55165-BCX-R15 | ■ | ■ | ■ | □ | □ |
| | | | 27.5 | 30 | 28.5 | 0.83 | 5.15 | 2.60 | 0.15 | 57 | BF6R/L-55275-BCX-R15 | ■ | ■ | ■ | □ | □ |

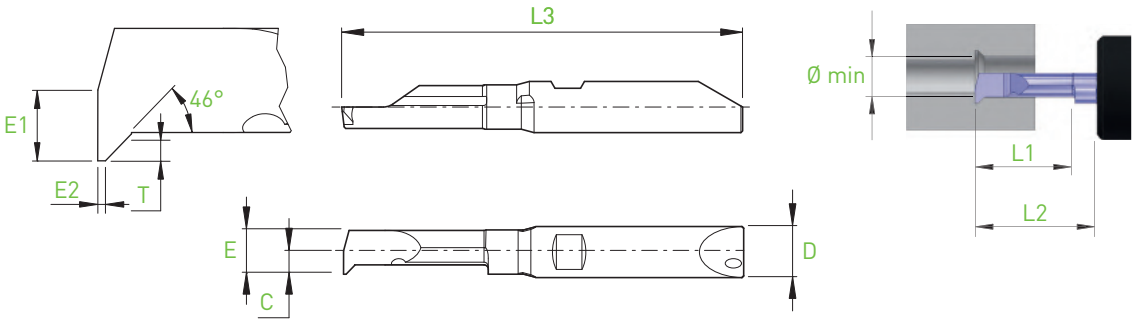
■ = disponible / verfügbar / available
 □ = selon disponibilité du stock / jenach Lagerverfügbarkeit / depending the stock availability

Copiage
Kopieren
Chamfering



BB4... / BB6...

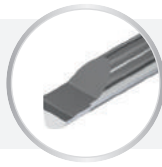
C45



| D h5 | Holder | Ø min | L1 | L2 BH4... BHY4... | L2 BHS4... BHK4... | T | E | E1 | C | E2 | L3 | Art. N° | R | | L | |
|------|---|-------|------|-------------------------|--------------------------|------|------|------|------|----------------------|--------------------------|--------------------------|--------------------------|--------------------------|--------------------------|--------------------------|
| | | | | | | | | | | | | | ZTAF | ZTAXF | ZN | ZTAF |
| 4 | BH4... BHS4... BHY4... BHK4... | 0.3 | 0.6 | 10 | 8.5 | 0.05 | 0.27 | 0.13 | 0.15 | 0.03 | 32 | BB4R/L-0306-C45-E03 | <input type="checkbox"/> | <input type="checkbox"/> | <input type="checkbox"/> | <input type="checkbox"/> |
| | | 0.4 | 0.8 | 10 | 8.5 | 0.07 | 0.36 | 0.18 | 0.20 | 0.03 | 32 | BB4R/L-0408-C45-E03 | <input type="checkbox"/> | <input type="checkbox"/> | <input type="checkbox"/> | <input type="checkbox"/> |
| | | 0.5 | 1.0 | 10 | 8.5 | 0.08 | 0.45 | 0.22 | 0.25 | 0.03 | 32 | BB4R/L-0510-C45-E03 | <input type="checkbox"/> | <input type="checkbox"/> | <input type="checkbox"/> | <input type="checkbox"/> |
| | | 0.6 | 1.2 | 10 | 8.5 | 0.10 | 0.54 | 0.27 | 0.30 | 0.03 | 32 | BB4R/L-0612-C45-E03 | <input type="checkbox"/> | <input type="checkbox"/> | <input type="checkbox"/> | <input type="checkbox"/> |
| | | 0.7 | 1.2 | 10 | 8.5 | 0.12 | 0.63 | 0.32 | 0.35 | 0.03 | 32 | BB4R/L-0714-C45-E03 | <input type="checkbox"/> | <input type="checkbox"/> | <input type="checkbox"/> | <input type="checkbox"/> |
| | | 0.8 | 1.6 | 10 | 8.5 | 0.14 | 0.72 | 0.36 | 0.40 | 0.05 | 32 | BB4R/L-0816-C45-E05 | <input type="checkbox"/> | <input type="checkbox"/> | <input type="checkbox"/> | <input type="checkbox"/> |
| | | 0.9 | 1.8 | 10 | 8.5 | 0.15 | 0.81 | 0.41 | 0.45 | 0.05 | 32 | BB4R/L-0918-C45-E05 | <input type="checkbox"/> | <input type="checkbox"/> | <input type="checkbox"/> | <input type="checkbox"/> |
| | | 1.0 | 3.0 | 10 | 8.5 | 0.17 | 0.90 | 0.45 | 0.70 | 0.10 | 32 | BB4R/L-1030-C45-E10 | <input type="checkbox"/> | <input type="checkbox"/> | <input type="checkbox"/> | <input type="checkbox"/> |
| | | 1.2 | 3.6 | 10 | 8.5 | 0.20 | 1.08 | 0.54 | 0.70 | 0.10 | 32 | BB4R/L-1236-C45-E10 | <input type="checkbox"/> | <input type="checkbox"/> | <input type="checkbox"/> | <input type="checkbox"/> |
| | | 1.5 | 4.5 | 10 | 8.5 | 0.25 | 1.35 | 0.67 | 0.75 | 0.10 | 32 | BB4R/L-1545-C45-E10 | <input type="checkbox"/> | <input type="checkbox"/> | <input type="checkbox"/> | <input type="checkbox"/> |
| | | 2.0 | 6.0 | 10 | 8.5 | 0.34 | 1.80 | 0.90 | 1.15 | 0.20 | 32 | BB4R/L-2060-C45-E20 | <input type="checkbox"/> | <input type="checkbox"/> | <input type="checkbox"/> | <input type="checkbox"/> |
| | | 2.5 | 7.5 | 10 | 8.5 | 0.43 | 2.25 | 1.13 | 1.30 | 0.20 | 32 | BB4R/L-2575-C45-E20 | <input type="checkbox"/> | <input type="checkbox"/> | <input type="checkbox"/> | <input type="checkbox"/> |
| 3.0 | 9.0 | 15 | 13.5 | 0.51 | 2.70 | 1.35 | 1.35 | 0.30 | 37 | BB4R/L-3090-C45-E30 | <input type="checkbox"/> | <input type="checkbox"/> | <input type="checkbox"/> | <input type="checkbox"/> | | |
| 3.5 | 10.5 | 15 | 13.5 | 0.60 | 3.15 | 1.58 | 1.60 | 0.30 | 37 | BB4R/L-35105-C45-E30 | <input type="checkbox"/> | <input type="checkbox"/> | <input type="checkbox"/> | <input type="checkbox"/> | | |
| 6 | BH6... BHS6... BHY6... BHK6... | 4.0 | 12.0 | 20 | 18.5 | 0.68 | 3.80 | 1.90 | 2.30 | 0.40 | 47 | BB6R/L-40120-C45-E40 | <input type="checkbox"/> | <input type="checkbox"/> | <input type="checkbox"/> | <input type="checkbox"/> |
| | | 5.0 | 15.0 | 20 | 18.5 | 0.85 | 4.75 | 2.37 | 2.50 | 0.50 | 47 | BB6R/L-50150-C45-E50 | <input type="checkbox"/> | <input type="checkbox"/> | <input type="checkbox"/> | <input type="checkbox"/> |

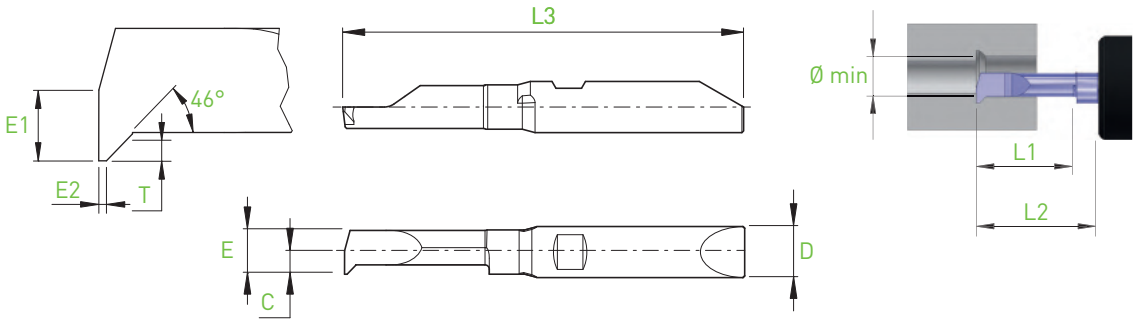
new

Copiage
Kopieren
Chambering



BF4... / BF6...

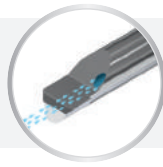
C45



| D h5 | Holder | Ø min | L1 | L2 BH4... BHY4... | L2 BHS4... BHK4... | T | E | E1 | C | E2 | L3 | Art. N° | R | | L | | |
|------|---|-------|------|-------------------------|--------------------------|------|------|------|------|----------------------|----|----------------------|------|-------|----|------|----|
| | | | | | | | | | | | | | ZTAF | ZTAXF | ZN | ZTAF | ZN |
| 4 | BH4... BHS4... BHY4... BHK4... | 0.3 | 0.6 | 10 | 8.5 | 0.05 | 0.27 | 0.13 | 0.15 | 0.03 | 32 | BF4R/L-0306-C45-E03 | ■ | ■ | ■ | □ | □ |
| | | 0.4 | 0.8 | 10 | 8.5 | 0.07 | 0.36 | 0.18 | 0.20 | 0.03 | 32 | BF4R/L-0408-C45-E03 | ■ | ■ | ■ | □ | □ |
| | | 0.5 | 1.0 | 10 | 8.5 | 0.08 | 0.45 | 0.22 | 0.25 | 0.03 | 32 | BF4R/L-0510-C45-E03 | ■ | ■ | ■ | □ | □ |
| | | 0.6 | 1.2 | 10 | 8.5 | 0.10 | 0.54 | 0.27 | 0.30 | 0.03 | 32 | BF4R/L-0612-C45-E03 | ■ | ■ | ■ | □ | □ |
| | | 0.7 | 1.2 | 10 | 8.5 | 0.12 | 0.63 | 0.32 | 0.35 | 0.03 | 32 | BF4R/L-0714-C45-E03 | ■ | ■ | ■ | □ | □ |
| | | 0.8 | 1.6 | 10 | 8.5 | 0.14 | 0.72 | 0.36 | 0.40 | 0.05 | 32 | BF4R/L-0816-C45-E05 | ■ | ■ | ■ | □ | □ |
| | | 0.9 | 1.8 | 10 | 8.5 | 0.15 | 0.81 | 0.41 | 0.45 | 0.05 | 32 | BF4R/L-0918-C45-E05 | ■ | ■ | ■ | □ | □ |
| | | 1.0 | 3.0 | 10 | 8.5 | 0.17 | 0.90 | 0.45 | 0.70 | 0.10 | 32 | BF4R/L-1030-C45-E10 | ■ | ■ | ■ | □ | □ |
| | | 1.2 | 3.6 | 10 | 8.5 | 0.20 | 1.08 | 0.54 | 0.70 | 0.10 | 32 | BF4R/L-1236-C45-E10 | ■ | ■ | ■ | □ | □ |
| | | 1.5 | 4.5 | 10 | 8.5 | 0.25 | 1.35 | 0.67 | 0.75 | 0.10 | 32 | BF4R/L-1545-C45-E10 | ■ | ■ | ■ | □ | □ |
| | | 2.0 | 6.0 | 10 | 8.5 | 0.34 | 1.80 | 0.90 | 1.15 | 0.20 | 32 | BF4R/L-2060-C45-E20 | ■ | ■ | ■ | □ | □ |
| | | 2.5 | 7.5 | 10 | 8.5 | 0.43 | 2.25 | 1.13 | 1.30 | 0.20 | 32 | BF4R/L-2575-C45-E20 | ■ | ■ | ■ | □ | □ |
| 3.0 | 9.0 | 15 | 13.5 | 0.51 | 2.70 | 1.35 | 1.35 | 0.30 | 37 | BF4R/L-3090-C45-E30 | ■ | ■ | ■ | □ | □ | | |
| 3.5 | 10.5 | 15 | 13.5 | 0.60 | 3.15 | 1.58 | 1.60 | 0.30 | 37 | BF4R/L-35105-C45-E30 | ■ | ■ | ■ | □ | □ | | |
| 6 | BH6... BHS6... BHY6... BHK6... | 4.0 | 12.0 | 20 | 18.5 | 0.68 | 3.80 | 1.90 | 2.30 | 0.40 | 47 | BF6R/L-40120-C45-E40 | ■ | ■ | ■ | □ | □ |
| | | 5.0 | 15.0 | 20 | 18.5 | 0.85 | 4.75 | 2.37 | 2.50 | 0.50 | 47 | BF6R/L-50150-C45-E50 | ■ | ■ | ■ | □ | □ |

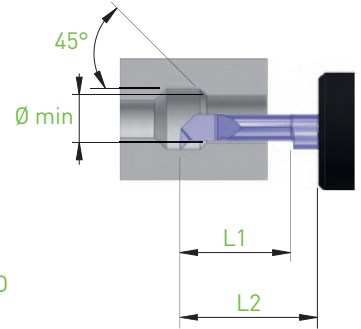
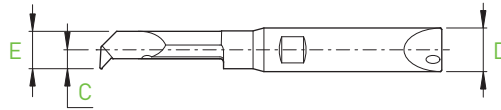
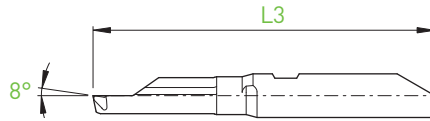
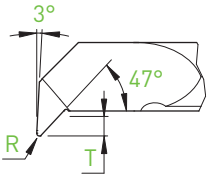
■ = disponible / verfügbar / available
□ = selon disponibilité du stock / jenach Lagerverfügbarkeit / depending the stock availability

Copiage
Kopieren
Chamfering



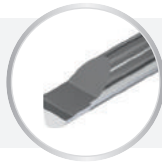
BB4... / BB6...

C45X



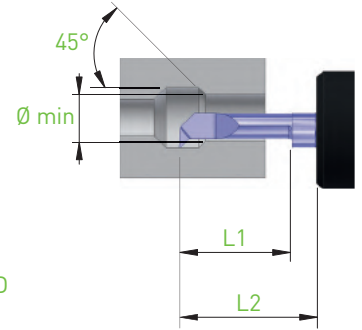
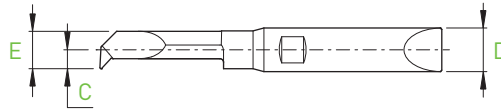
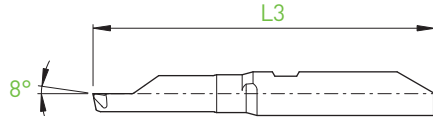
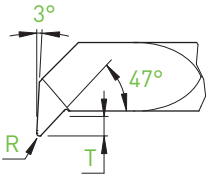
| D _{h5} | Holder | Ø min | L1 | L2 BH4... BHY4... | L2 BHS4... BHK4... | T | E | C | R | L3 | Art. N° | R | | L | |
|-----------------|---|-------|------|-------------------------|--------------------------|------|------|------|------|----|------------------------------|-------------------------------------|-------------------------------------|--------------------------|--------------------------|
| | | | | | | | | | | | | ZTAF | ZTAXF | ZN | ZTAF |
| 4 | BH4... BHS4... BHY4... BHK4... | 2.5 | 7.5 | 10 | 8.5 | 0.50 | 2.25 | 1.35 | 0.10 | 32 | BB4R/L-2575-C45X-R10 | <input checked="" type="checkbox"/> | <input checked="" type="checkbox"/> | <input type="checkbox"/> | <input type="checkbox"/> |
| | | | 12.5 | 15 | 13.5 | 0.50 | 2.25 | 1.35 | 0.10 | 37 | BB4R/L-25125-C45X-R10 | <input checked="" type="checkbox"/> | <input checked="" type="checkbox"/> | <input type="checkbox"/> | <input type="checkbox"/> |
| | | 3.0 | 9.0 | 15 | 13.5 | 0.60 | 2.70 | 1.45 | 0.10 | 37 | BB4R/L-3090-C45X-R10 | <input checked="" type="checkbox"/> | <input checked="" type="checkbox"/> | <input type="checkbox"/> | <input type="checkbox"/> |
| | | | 15.0 | 20 | 18.5 | 0.60 | 2.70 | 1.45 | 0.10 | 42 | BB4R/L-30150-C45X-R10 | <input checked="" type="checkbox"/> | <input checked="" type="checkbox"/> | <input type="checkbox"/> | <input type="checkbox"/> |
| | | 3.5 | 10.5 | 15 | 13.5 | 0.70 | 3.15 | 1.60 | 0.10 | 37 | BB4R/L-35105-C45X-R10 | <input checked="" type="checkbox"/> | <input checked="" type="checkbox"/> | <input type="checkbox"/> | <input type="checkbox"/> |
| | | | 17.5 | 20 | 18.5 | 0.70 | 3.15 | 1.60 | 0.10 | 42 | BB4R/L-35175-C45X-R10 | <input checked="" type="checkbox"/> | <input checked="" type="checkbox"/> | <input type="checkbox"/> | <input type="checkbox"/> |
| 6 | BH6... BHS6... BHY6... BHK6... | 4.0 | 12.0 | 20 | 18.5 | 0.80 | 3.80 | 2.30 | 0.15 | 47 | BB6R/L-40120-C45X-R15 | <input checked="" type="checkbox"/> | <input checked="" type="checkbox"/> | <input type="checkbox"/> | <input type="checkbox"/> |
| | | | 20.0 | 30 | 28.5 | 0.80 | 3.80 | 2.30 | 0.15 | 57 | BB6R/L-40200-C45X-R15 | <input checked="" type="checkbox"/> | <input checked="" type="checkbox"/> | <input type="checkbox"/> | <input type="checkbox"/> |
| | | 4.5 | 13.5 | 20 | 18.5 | 0.90 | 4.28 | 2.40 | 0.15 | 47 | BB6R/L-45135-C45X-R15 | <input checked="" type="checkbox"/> | <input checked="" type="checkbox"/> | <input type="checkbox"/> | <input type="checkbox"/> |
| | | | 22.5 | 30 | 28.5 | 0.90 | 4.28 | 2.40 | 0.15 | 57 | BB6R/L-45225-C45X-R15 | <input checked="" type="checkbox"/> | <input checked="" type="checkbox"/> | <input type="checkbox"/> | <input type="checkbox"/> |
| | | 5.0 | 15.0 | 20 | 18.5 | 1.00 | 4.75 | 2.50 | 0.15 | 47 | BB6R/L-50150-C45X-R15 | <input checked="" type="checkbox"/> | <input checked="" type="checkbox"/> | <input type="checkbox"/> | <input type="checkbox"/> |
| | | | 25.0 | 30 | 28.5 | 1.00 | 4.75 | 2.50 | 0.15 | 57 | BB6R/L-50250-C45X-R15 | <input checked="" type="checkbox"/> | <input checked="" type="checkbox"/> | <input type="checkbox"/> | <input type="checkbox"/> |
| | | 5.5 | 16.5 | 20 | 18.5 | 1.10 | 5.15 | 2.60 | 0.15 | 47 | BB6R/L-55165-C45X-R15 | <input checked="" type="checkbox"/> | <input checked="" type="checkbox"/> | <input type="checkbox"/> | <input type="checkbox"/> |
| | | | 27.5 | 30 | 28.5 | 1.10 | 5.15 | 2.60 | 0.15 | 57 | BB6R/L-55275-C45X-R15 | <input checked="" type="checkbox"/> | <input checked="" type="checkbox"/> | <input type="checkbox"/> | <input type="checkbox"/> |

Copiage
Kopieren
Chambering



BF4... / BF6...

C45X

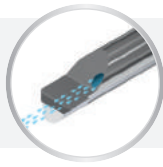


| D _{h5} | Holder | Ø min | L1 | L2 BH4... BHY4... | L2 BHS4... BHK4... | T | E | C | R | L3 | Art. N° | R | | L | | |
|-----------------|---|-------|------|-------------------------|--------------------------|------|------|------|------|----|-----------------------|------|-------|----|------|----|
| | | | | | | | | | | | | ZTAF | ZTAXF | ZN | ZTAF | ZN |
| 4 | BH4... BHS4... BHY4... BHK4... | 2.5 | 7.5 | 10 | 8.5 | 0.50 | 2.25 | 1.35 | 0.10 | 32 | BF4R/L-2575-C45X-R10 | ■ | ■ | ■ | □ | □ |
| | | | 12.5 | 15 | 13.5 | 0.50 | 2.25 | 1.35 | 0.10 | 37 | BF4R/L-25125-C45X-R10 | ■ | ■ | ■ | □ | □ |
| | | 3.0 | 9.0 | 15 | 13.5 | 0.60 | 2.70 | 1.45 | 0.10 | 37 | BF4R/L-3090-C45X-R10 | ■ | ■ | ■ | □ | □ |
| | | | 15.0 | 20 | 18.5 | 0.60 | 2.70 | 1.45 | 0.10 | 42 | BF4R/L-30150-C45X-R10 | ■ | ■ | ■ | □ | □ |
| | | 3.5 | 10.5 | 15 | 13.5 | 0.70 | 3.15 | 1.60 | 0.10 | 37 | BF4R/L-35105-C45X-R10 | ■ | ■ | ■ | □ | □ |
| | | | 17.5 | 20 | 18.5 | 0.70 | 3.15 | 1.60 | 0.10 | 42 | BF4R/L-35175-C45X-R10 | ■ | ■ | ■ | □ | □ |
| 6 | BH6... BHS6... BHY6... BHK6... | 4.0 | 12.0 | 20 | 18.5 | 0.80 | 3.80 | 2.30 | 0.15 | 47 | BF6R/L-40120-C45X-R15 | ■ | ■ | ■ | □ | □ |
| | | | 20.0 | 30 | 28.5 | 0.80 | 3.80 | 2.30 | 0.15 | 57 | BF6R/L-40200-C45X-R15 | ■ | ■ | ■ | □ | □ |
| | | 4.5 | 13.5 | 20 | 18.5 | 0.90 | 4.28 | 2.40 | 0.15 | 47 | BF6R/L-45135-C45X-R15 | ■ | ■ | ■ | □ | □ |
| | | | 22.5 | 30 | 28.5 | 0.90 | 4.28 | 2.40 | 0.15 | 57 | BF6R/L-45225-C45X-R15 | ■ | ■ | ■ | □ | □ |
| | | 5.0 | 15.0 | 20 | 18.5 | 1.00 | 4.75 | 2.50 | 0.15 | 47 | BF6R/L-50150-C45X-R15 | ■ | ■ | ■ | □ | □ |
| | | | 25.0 | 30 | 28.5 | 1.00 | 4.75 | 2.50 | 0.15 | 57 | BF6R/L-50250-C45X-R15 | ■ | ■ | ■ | □ | □ |
| | | 5.5 | 16.5 | 20 | 18.5 | 1.10 | 5.15 | 2.60 | 0.15 | 47 | BF6R/L-55165-C45X-R15 | ■ | ■ | ■ | □ | □ |
| | | | 27.5 | 30 | 28.5 | 1.10 | 5.15 | 2.60 | 0.15 | 57 | BF6R/L-55275-C45X-R15 | ■ | ■ | ■ | □ | □ |

■ = disponible / verfügbar / available
□ = selon disponibilité du stock / jenach Lagerverfügbarkeit / depending the stock availability

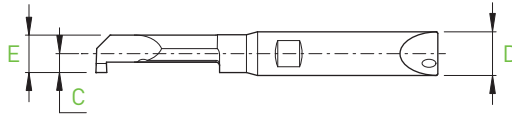
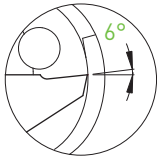
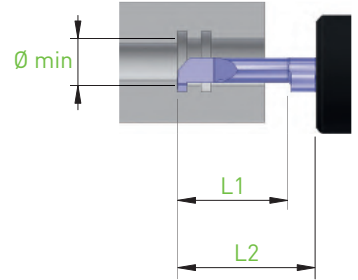
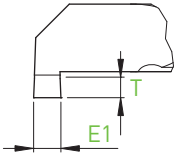
IN-LINE

Gorge
Einstecken
Grooving



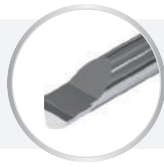
BB4... / BB6...

GX



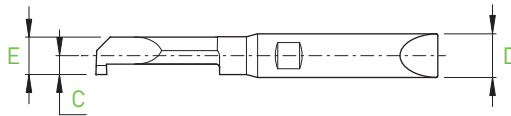
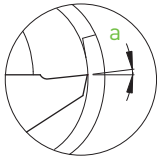
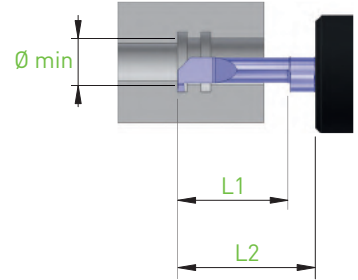
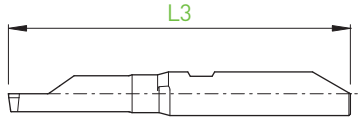
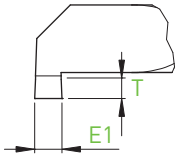
| D _{h5} | Holder | Ø min | L1 | L2 BH4... BHY4... | L2 BHS4... BHK4... | E1 | T | E | C | L3 | Art. N° | R | | | L | | | | |
|-----------------|---|-------|------|-------------------------|--------------------------|------|--------------|----------------------|------|------|--------------------|--|--|----|------|----|----|---|---|
| | | | | | | | | | | | | ZTAF | ZTAXF | ZN | ZTAF | ZN | ZN | | |
| 4 | BH4... BHS4... BHY4... BHK4... | 3.0 | 9.0 | 15 | 13.5 | 0.50 | 0.60 | 2.70 | 1.45 | 37 | BB4R/L-3090-G050X | ■ | ■ | ■ | □ | □ | □ | | |
| | | | 15.0 | 20 | 18.5 | 0.50 | 0.60 | 2.70 | 1.45 | 42 | BB4R/L-30150-G050X | ■ | ■ | ■ | □ | □ | □ | | |
| | | 3.5 | 10.5 | 15 | 13.5 | 0.75 | 0.70 | 3.15 | 1.60 | 37 | BB4R/L-35105-G075X | ■ | ■ | ■ | □ | □ | □ | | |
| | | | 17.5 | 20 | 18.5 | 0.75 | 0.70 | 3.15 | 1.60 | 42 | BB4R/L-35175-G075X | ■ | ■ | ■ | □ | □ | □ | | |
| 6 | BH6... BHS6... BHY6... BHK6... | 4.0 | 12.0 | 20 | 18.5 | 1.00 | 0.80 | 3.80 | 2.20 | 47 | BB6R/L-40120-G100X | ■ | ■ | ■ | □ | □ | □ | | |
| | | | 20.0 | 30 | 28.5 | 1.00 | 0.80 | 3.80 | 2.20 | 57 | BB6R/L-40200-G100X | ■ | ■ | ■ | □ | □ | □ | | |
| | | | 4.5 | 13.5 | 20 | 18.5 | 1.00 1.50 | 0.90 | 4.28 | 2.40 | 47 | BB6R/L-45135-G100X BB6R/L-45135-G150X | ■ | ■ | ■ | □ | □ | □ | |
| | | | | 22.5 | 30 | 28.5 | 1.00 1.50 | 0.90 | 4.28 | 2.40 | 57 | BB6R/L-45225-G100X BB6R/L-45225-G150X | ■ | ■ | ■ | □ | □ | □ | |
| | | 5.0 | 15.0 | 15.0 | 20 | 18.5 | 1.00 1.50 | 1.00 | 4.75 | 2.50 | 47 | BB6R/L-50150-G100X BB6R/L-50150-G150X | ■ | ■ | ■ | □ | □ | □ | |
| | | | | 25.0 | 30 | 28.5 | 1.00 1.50 | 1.00 | 4.75 | 2.50 | 57 | BB6R/L-50250-G100X BB6R/L-50250-G150X | ■ | ■ | ■ | □ | □ | □ | |
| | | | 5.5 | 16.5 | 16.5 | 20 | 18.5 | 1.00 1.50 2.00 | 1.10 | 5.15 | 2.60 | 47 | BB6R/L-55165-G100X BB6R/L-55165-G150X BB6R/L-55165-G200X | ■ | ■ | ■ | □ | □ | □ |
| | | | | | 27.5 | 30 | 28.5 | 1.00 1.50 2.00 | 1.10 | 5.15 | 2.60 | 57 | BB6R/L-55275-G100X BB6R/L-55275-G150X BB6R/L-55275-G200X | ■ | ■ | ■ | □ | □ | □ |

Gorge
Einstecken
Grooving



BF4... / BF6...

GX

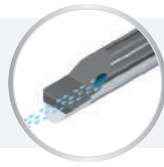


| D h5 | Holder | Ø min | L1 | L2 | | E1 | T | E | a | C | L3 | Art. N° | R | | L | |
|------|---|-------|------|-------------------|--------------------|------|--------------------|--------------------------|----|------|----|--------------------------|--------------------------|--------------------------|--------------------------|--------------------------|
| | | | | BH4... BHY4... | BHS4... BHK4... | | | | | | | | ZTAF | ZTAXF | ZN | ZTAF |
| 4 | BH4... BHS4... BHY4... BHK4... | 0.5 | 1.0 | 10 | 8.5 | 0.15 | 0.10 | 0.45 | 3° | 0.25 | 32 | BF4R/L-0510-G015X | <input type="checkbox"/> | <input type="checkbox"/> | <input type="checkbox"/> | <input type="checkbox"/> |
| | | 0.7 | 1.4 | 10 | 8.5 | 0.20 | 0.14 | 0.63 | | 0.35 | 32 | BF4R/L-0714-G020X | <input type="checkbox"/> | <input type="checkbox"/> | <input type="checkbox"/> | <input type="checkbox"/> |
| | | 1.0 | 2.0 | 10 | 8.5 | 0.30 | 0.20 | 0.90 | | 0.60 | 32 | BF4R/L-1020-G030X | <input type="checkbox"/> | <input type="checkbox"/> | <input type="checkbox"/> | <input type="checkbox"/> |
| | | 1.5 | 3.0 | 10 | 8.5 | 0.40 | 0.30 | 1.35 | 6° | 0.80 | 32 | BF4R/L-1530-G040X | <input type="checkbox"/> | <input type="checkbox"/> | <input type="checkbox"/> | <input type="checkbox"/> |
| | | 2.0 | 6.0 | 10 | 8.5 | 0.40 | 0.40 | 1.80 | | 1.15 | 32 | BF4R/L-2060-G040X | <input type="checkbox"/> | <input type="checkbox"/> | <input type="checkbox"/> | <input type="checkbox"/> |
| | | 2.5 | 7.5 | 10 | 8.5 | 0.50 | 0.50 | 2.25 | | 1.15 | 32 | BF4R/L-2575-G050X | <input type="checkbox"/> | <input type="checkbox"/> | <input type="checkbox"/> | <input type="checkbox"/> |
| | | 3.0 | 9.0 | 15 | 13.5 | 0.50 | 0.60 | 2.70 | | 1.45 | 37 | BF4R/L-3090-G050X | <input type="checkbox"/> | <input type="checkbox"/> | <input type="checkbox"/> | <input type="checkbox"/> |
| | | | 15.0 | 20 | 18.5 | 0.50 | 0.60 | 2.70 | | 1.45 | 42 | BF4R/L-30150-G050X | <input type="checkbox"/> | <input type="checkbox"/> | <input type="checkbox"/> | <input type="checkbox"/> |
| | | 3.5 | 10.5 | 15 | 13.5 | 0.75 | 0.70 | 3.15 | | 1.60 | 37 | BF4R/L-35105-G075X | <input type="checkbox"/> | <input type="checkbox"/> | <input type="checkbox"/> | <input type="checkbox"/> |
| | | | 17.5 | 20 | 18.5 | 0.75 | 0.70 | 3.15 | | 1.60 | 42 | BF4R/L-35175-G075X | <input type="checkbox"/> | <input type="checkbox"/> | <input type="checkbox"/> | <input type="checkbox"/> |
| 6 | BH6... BHS6... BHY6... BHK6... | 4.0 | 12.0 | 20 | 18.5 | 1.00 | 0.80 | 3.80 | 6° | 2.20 | 47 | BF6R/L-40120-G100X | <input type="checkbox"/> | <input type="checkbox"/> | <input type="checkbox"/> | <input type="checkbox"/> |
| | | | 20.0 | 30 | 28.5 | 1.00 | 0.80 | 3.80 | | | | BF6R/L-40200-G100X | <input type="checkbox"/> | <input type="checkbox"/> | <input type="checkbox"/> | <input type="checkbox"/> |
| | | 4.5 | 13.5 | 20 | 18.5 | 1.00 | 0.90 | 4.28 | | 2.40 | 47 | BF6R/L-45135-G100X | <input type="checkbox"/> | <input type="checkbox"/> | <input type="checkbox"/> | <input type="checkbox"/> |
| | | | 22.5 | 30 | 28.5 | 1.50 | 0.90 | 4.28 | | | | BF6R/L-45135-G150X | <input type="checkbox"/> | <input type="checkbox"/> | <input type="checkbox"/> | <input type="checkbox"/> |
| | | | | 30 | 28.5 | 1.00 | 0.90 | 4.28 | | | | BF6R/L-45225-G100X | <input type="checkbox"/> | <input type="checkbox"/> | <input type="checkbox"/> | <input type="checkbox"/> |
| | | 5.0 | 15.0 | 20 | 18.5 | 1.00 | 1.00 | 4.75 | | 2.50 | 47 | BF6R/L-50150-G100X | <input type="checkbox"/> | <input type="checkbox"/> | <input type="checkbox"/> | <input type="checkbox"/> |
| | | | | 25.0 | 30 | 28.5 | 1.50 | 1.00 | | | | 4.75 | BF6R/L-50150-G150X | <input type="checkbox"/> | <input type="checkbox"/> | <input type="checkbox"/> |
| | | | 30 | 28.5 | 1.00 | 1.00 | 4.75 | BF6R/L-50250-G100X | | | | <input type="checkbox"/> | <input type="checkbox"/> | <input type="checkbox"/> | <input type="checkbox"/> | |
| | | 5.5 | 16.5 | 20 | 18.5 | 1.50 | 1.10 | 5.15 | | 2.60 | 47 | BF6R/L-55165-G100X | <input type="checkbox"/> | <input type="checkbox"/> | <input type="checkbox"/> | <input type="checkbox"/> |
| | | | | | 2.00 | 1.10 | 5.15 | BF6R/L-55165-G150X | | | | <input type="checkbox"/> | <input type="checkbox"/> | <input type="checkbox"/> | <input type="checkbox"/> | |
| | | | | 1.00 | 1.10 | 5.15 | BF6R/L-55165-G200X | <input type="checkbox"/> | | | | <input type="checkbox"/> | <input type="checkbox"/> | <input type="checkbox"/> | | |
| | | | 27.5 | 30 | 28.5 | 1.50 | 1.10 | 5.15 | | | | BF6R/L-55275-G100X | <input type="checkbox"/> | <input type="checkbox"/> | <input type="checkbox"/> | <input type="checkbox"/> |
| | | | | | | 2.00 | 1.10 | 5.15 | | | | BF6R/L-55275-G150X | <input type="checkbox"/> | <input type="checkbox"/> | <input type="checkbox"/> | <input type="checkbox"/> |
| | | | | | | 2.00 | 1.10 | 5.15 | | | | BF6R/L-55275-G200X | <input type="checkbox"/> | <input type="checkbox"/> | <input type="checkbox"/> | <input type="checkbox"/> |

■ = disponible / verfügbar / available
□ = selon disponibilité du stock / jenach Lagerverfügbarkeit / depending the stock availability

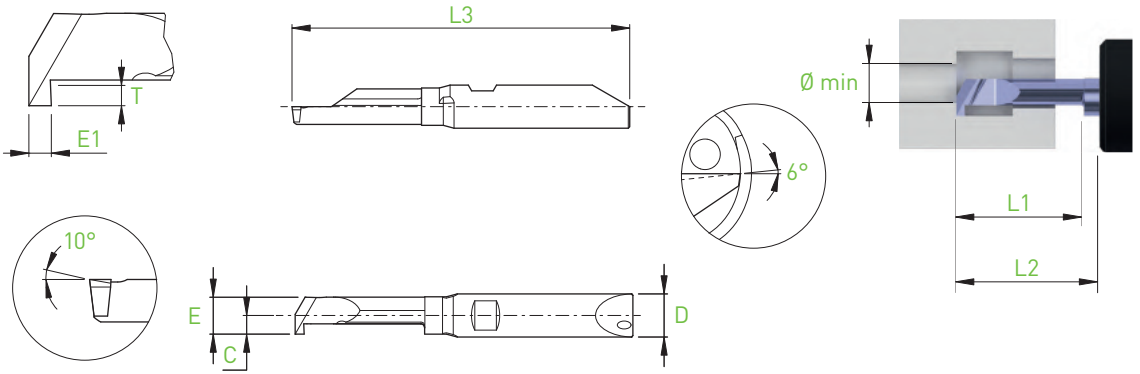
IN-LINE

Fonçage-tournage
Einstecken und drehen
Grooving and turning



BB4... / BB6...

GTX

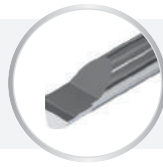


| D h5 | Holder | Ø min | L1 | L2 BH4... BHY4... | L2 BHS4... BHK4... | E1 | T | E | C | L3 | Art. N° | R | | L | |
|------|---|-------|------|-------------------------|--------------------------|------|------|------|------|---------------------|---------------------|------|-------|----|------|
| | | | | | | | | | | | | ZTAF | ZTAXF | ZN | ZTAF |
| 4 | BH4... BHS4... | 3.0 | 9.0 | 15 | 13.5 | 1.00 | 0.60 | 2.7 | 1.45 | 37 | BB4R/L-3090-GT100X | ■ | ■ | □ | □ |
| | | | 15.0 | 20 | 18.5 | 1.00 | 0.60 | 2.7 | 1.45 | 42 | BB4R/L-30150-GT100X | ■ | ■ | □ | □ |
| | 3.5 | 10.5 | 15 | 13.5 | 1.00 | 0.70 | 3.15 | 1.6 | 37 | BB4R/L-35105-GT100X | ■ | ■ | □ | □ | |
| | | 17.5 | 20 | 18.5 | 1.00 | 0.70 | 3.15 | 1.6 | 42 | BB4R/L-35175-GT100X | ■ | ■ | □ | □ | |
| 6 | BH6... BHS6... BHY6... BHK6... | 4.0 | 14.0 | 20 | 18.5 | 1.25 | 0.80 | 3.8 | 2.2 | 47 | BB6R/L-40140-GT125X | ■ | ■ | □ | □ |
| | | | 22.0 | 30 | 28.5 | 1.25 | 0.80 | 3.8 | 2.2 | 57 | BB6R/L-40220-GT125X | ■ | ■ | □ | □ |
| | | 4.5 | 16.0 | 20 | 18.5 | 1.25 | 0.90 | 4.28 | 2.4 | 47 | BB6R/L-45160-GT125X | ■ | ■ | □ | □ |
| | | | 25.0 | 30 | 28.5 | 1.25 | 0.90 | 4.28 | 2.4 | 57 | BB6R/L-45250-GT125X | ■ | ■ | □ | □ |
| | | 5.0 | 17.5 | 20 | 18.5 | 1.25 | 1.00 | 4.75 | 2.5 | 47 | BB6R/L-50175-GT125X | ■ | ■ | □ | □ |
| | | | 27.5 | 30 | 28.5 | 1.25 | 1.00 | 4.75 | 2.5 | 57 | BB6R/L-50275-GT125X | ■ | ■ | □ | □ |
| | | 5.5 | 17.5 | 20 | 18.5 | 1.25 | 1.10 | 5.15 | 2.6 | 47 | BB6R/L-55175-GT125X | ■ | ■ | □ | □ |
| | | | 27.5 | 30 | 28.5 | 1.25 | 1.10 | 5.15 | 2.6 | 57 | BB6R/L-55275-GT125X | ■ | ■ | □ | □ |

Fonçage-tournage

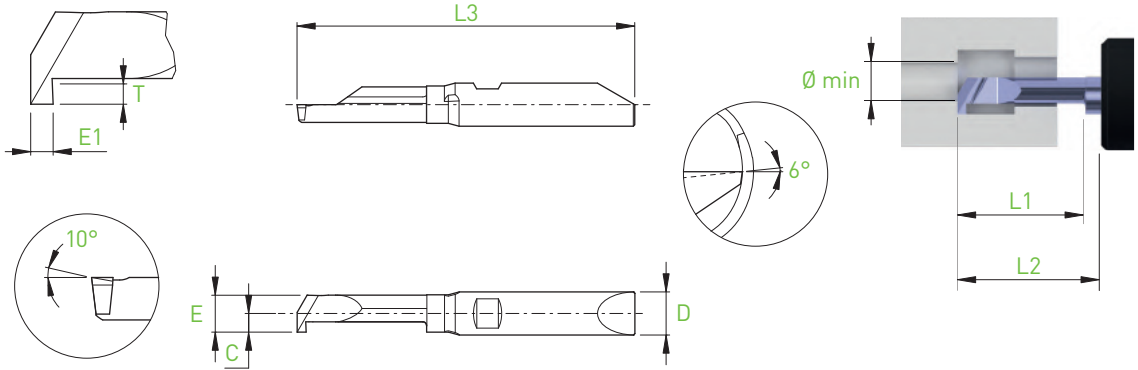
Einstechen und drehen

Grooving and turning



BF4... / BF6...

GTX



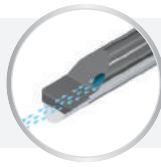
| D h5 | Holder | Ø min | L1 | L2 BH4... BHY4... | L2 BHS4... BHK4... | E1 | T | E | C | L3 | Art. N° | R | | L | | |
|------|---|-------|------|-------------------------|--------------------------|------|------|------|------|---------------------|---------------------|------|-------|----|------|----|
| | | | | | | | | | | | | ZTAF | ZTAXF | ZN | ZTAF | ZN |
| 4 | BH4... BHS4... | 3.0 | 9.0 | 15 | 13.5 | 1.00 | 0.60 | 2.7 | 1.45 | 37 | BF4R/L-3090-GT100X | ■ | ■ | ■ | □ | □ |
| | | | 15.0 | 20 | 18.5 | 1.00 | 0.60 | 2.7 | 1.45 | 42 | BF4R/L-30150-GT100X | ■ | ■ | ■ | □ | □ |
| | 3.5 | 10.5 | 15 | 13.5 | 1.00 | 0.70 | 3.15 | 1.6 | 37 | BF4R/L-35105-GT100X | ■ | ■ | ■ | □ | □ | |
| | | 17.5 | 20 | 18.5 | 1.00 | 0.70 | 3.15 | 1.6 | 42 | BF4R/L-35175-GT100X | ■ | ■ | ■ | □ | □ | |
| 6 | BH6... BHS6... BHY6... BHK6... | 4.0 | 14.0 | 20 | 18.5 | 1.25 | 0.80 | 3.8 | 2.2 | 47 | BF6R/L-40140-GT125X | ■ | ■ | ■ | □ | □ |
| | | | 22.0 | 30 | 28.5 | 1.25 | 0.80 | 3.8 | 2.2 | 57 | BF6R/L-40220-GT125X | ■ | ■ | ■ | □ | □ |
| | | 4.5 | 16.0 | 20 | 18.5 | 1.25 | 0.90 | 4.28 | 2.4 | 47 | BF6R/L-45160-GT125X | ■ | ■ | ■ | □ | □ |
| | | | 25.0 | 30 | 28.5 | 1.25 | 0.90 | 4.28 | 2.4 | 57 | BF6R/L-45250-GT125X | ■ | ■ | ■ | □ | □ |
| | | 5.0 | 17.5 | 20 | 18.5 | 1.25 | 1.00 | 4.75 | 2.5 | 47 | BF6R/L-50175-GT125X | ■ | ■ | ■ | □ | □ |
| | | | 27.5 | 30 | 28.5 | 1.25 | 1.00 | 4.75 | 2.5 | 57 | BF6R/L-50275-GT125X | ■ | ■ | ■ | □ | □ |
| | | 5.5 | 17.5 | 20 | 18.5 | 1.25 | 1.10 | 5.15 | 2.6 | 47 | BF6R/L-55175-GT125X | ■ | ■ | ■ | □ | □ |
| | | | 27.5 | 30 | 28.5 | 1.25 | 1.10 | 5.15 | 2.6 | 57 | BF6R/L-55275-GT125X | ■ | ■ | ■ | □ | □ |

■ = disponible / verfügbar / available

□ = selon disponibilité du stock / jenach Lagerverfügbarkeit / depending the stock availability

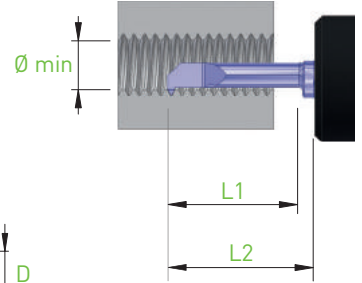
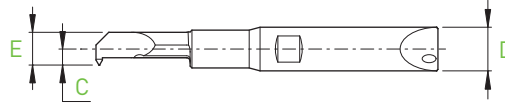
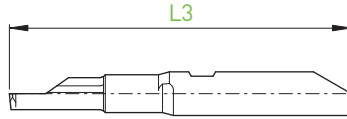
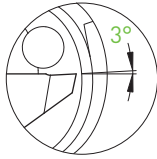
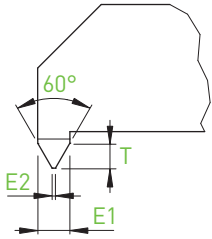
IN-LINE

Filetage
Gewindedrehen
Threading



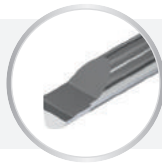
BB4... / BB6...

TP60



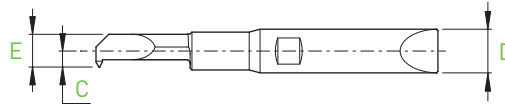
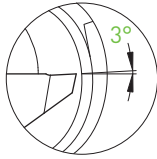
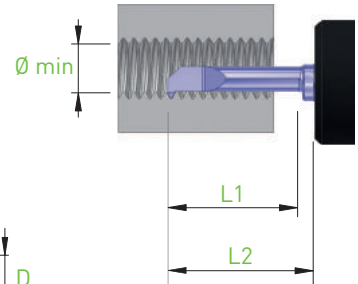
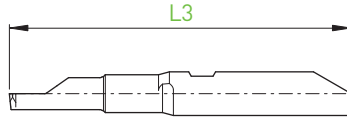
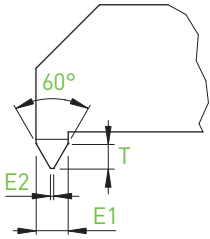
| D h5 | Holder | Ø min | L1 | L2 BH4... BHY4... | L2 BHS4... BHK4... | P (mm) | P (TPI) | E1 | E2 (0/-0.01) | T | E | C | L3 | Art. N° | R | | L | |
|---------|---|----------|------|-------------------------|--------------------------|-----------|---------|------|-----------------|------|------|-------------------|----|-------------------|------|----|------|----|
| | | | | | | | | | | | | | | | ZTAF | ZN | ZTAF | ZN |
| 4 | BH4... BHS4... BHY4... BHK4... | 1.25 | 3.2 | 10 | 8.5 | 0.20-0.35 | 80 | 0.30 | 0.02 | 0.25 | 1.10 | 0.80 | 32 | BB4R/L-1232-TP60 | ■ | ■ | □ | □ |
| | | 1.6 | 4.0 | 10 | 8.5 | 0.25-0.40 | 72-64 | 0.35 | 0.03 | 0.28 | 1.41 | 0.90 | 32 | BB4R/L-1640-TP60 | ■ | ■ | □ | □ |
| | | 2.5 | 6.0 | 10 | 8.5 | 0.35-0.50 | 56-48 | 0.44 | 0.04 | 0.34 | 2.25 | 1.35 | 32 | BB4R/L-2560-TP60 | ■ | ■ | □ | □ |
| | | | 9.0 | 15 | 13.5 | 0.35-0.50 | 56-48 | 0.44 | 0.04 | 0.34 | 2.25 | 1.35 | 37 | BB4R/L-2590-TP60 | ■ | ■ | □ | □ |
| | | 3.3 | 8.0 | 15 | 13.5 | 0.50-0.75 | 40-36 | 0.62 | 0.06 | 0.48 | 2.97 | 1.50 | 37 | BB4R/L-3380-TP60 | ■ | ■ | □ | □ |
| 12.0 | 15 | | 13.5 | 0.50-0.75 | 40-36 | 0.62 | 0.06 | 0.48 | 2.97 | 1.50 | 37 | BB4R/L-33120-TP60 | ■ | ■ | □ | □ | | |
| 6 | BH6... BHS6... BHY6... BHK6... | 4.2 | 10.0 | 20 | 18.5 | 0.50-0.80 | 36-32 | 0.70 | 0.06 | 0.55 | 3.78 | 2.10 | 47 | BB6R/L-42100-TP60 | ■ | ■ | □ | □ |
| | | | 15.0 | 20 | 18.5 | 0.50-0.80 | 36-32 | 0.70 | 0.06 | 0.55 | 3.78 | 2.10 | 47 | BB6R/L-42150-TP60 | ■ | ■ | □ | □ |
| | | 5.0 | 12.0 | 20 | 18.5 | 0.75-1.00 | 28-24 | 0.89 | 0.09 | 0.69 | 4.50 | 2.20 | 47 | BB6R/L-50120-TP60 | ■ | ■ | □ | □ |
| | | | 18.0 | 20 | 18.5 | 0.75-1.00 | 28-24 | 0.89 | 0.09 | 0.69 | 4.50 | 2.20 | 47 | BB6R/L-50180-TP60 | ■ | ■ | □ | □ |

Filetage
Gewindedrehen
Threading



BF4... / BF6...

TP60

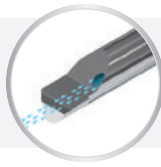


| D _{h5} | Holder | Ø min | L1 | L2 BH4... BHY4... | L2 BHS4... BHK4... | P (mm) | P (TPI) | E1 | E2 (0/-0.01) | T | E | C | L3 | Art. N° | R | | L | |
|-----------------|---|-------|------|-------------------------|--------------------------|-----------|---------|------|-----------------|------|------|-------------------|----|-------------------|------|----|------|----|
| | | | | | | | | | | | | | | | ZTAF | ZN | ZTAF | ZN |
| 4 | BH4... BHS4... BHY4... BHK4... | 1.25 | 3.2 | 10 | 8.5 | 0.20-0.35 | 80 | 0.30 | 0.02 | 0.25 | 1.10 | 0.80 | 32 | BF4R/L-1232-TP60 | ■ | ■ | □ | □ |
| | | 1.6 | 4.0 | 10 | 8.5 | 0.25-0.40 | 72-64 | 0.35 | 0.03 | 0.28 | 1.41 | 0.90 | 32 | BF4R/L-1640-TP60 | ■ | ■ | □ | □ |
| | | 2.5 | 6.0 | 10 | 8.5 | 0.35-0.50 | 56-48 | 0.44 | 0.04 | 0.34 | 2.25 | 1.35 | 32 | BF4R/L-2560-TP60 | ■ | ■ | □ | □ |
| | | | 9.0 | 15 | 13.5 | 0.35-0.50 | 56-48 | 0.44 | 0.04 | 0.34 | 2.25 | 1.35 | 37 | BF4R/L-2590-TP60 | ■ | ■ | □ | □ |
| | | 3.3 | 8.0 | 15 | 13.5 | 0.50-0.75 | 40-36 | 0.62 | 0.06 | 0.48 | 2.97 | 1.50 | 37 | BF4R/L-3380-TP60 | ■ | ■ | □ | □ |
| 12.0 | 15 | | 13.5 | 0.50-0.75 | 40-36 | 0.62 | 0.06 | 0.48 | 2.97 | 1.50 | 37 | BF4R/L-33120-TP60 | ■ | ■ | □ | □ | | |
| 6 | BH6... BHS6... BHY6... BHK6... | 4.2 | 10.0 | 20 | 18.5 | 0.50-0.80 | 36-32 | 0.70 | 0.06 | 0.55 | 3.78 | 2.10 | 47 | BF6R/L-42100-TP60 | ■ | ■ | □ | □ |
| | | | 15.0 | 20 | 18.5 | 0.50-0.80 | 36-32 | 0.70 | 0.06 | 0.55 | 3.78 | 2.10 | 47 | BF6R/L-42150-TP60 | ■ | ■ | □ | □ |
| | | 5.0 | 12.0 | 20 | 18.5 | 0.75-1.00 | 28-24 | 0.89 | 0.09 | 0.69 | 4.50 | 2.20 | 47 | BF6R/L-50120-TP60 | ■ | ■ | □ | □ |
| | | | 18.0 | 20 | 18.5 | 0.75-1.00 | 28-24 | 0.89 | 0.09 | 0.69 | 4.50 | 2.20 | 47 | BF6R/L-50180-TP60 | ■ | ■ | □ | □ |

■ = disponible / verfügbar / available
□ = selon disponibilité du stock / jenach Lagerverfügbarkeit / depending the stock availability

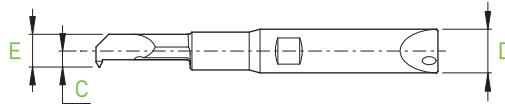
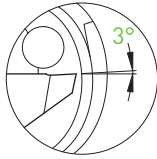
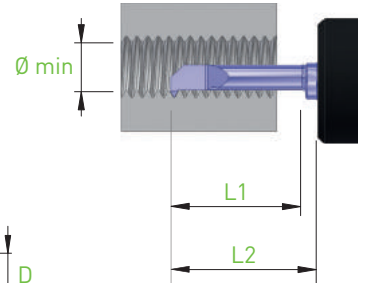
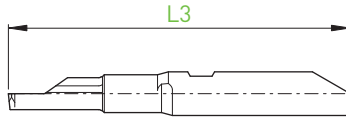
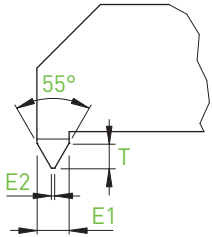
IN-LINE

Filetage
Gewindedrehen
Threading



BB4... / BB6...

TP55



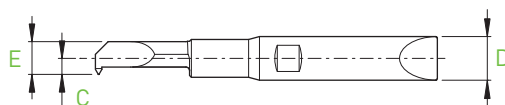
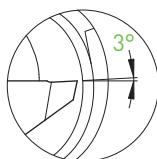
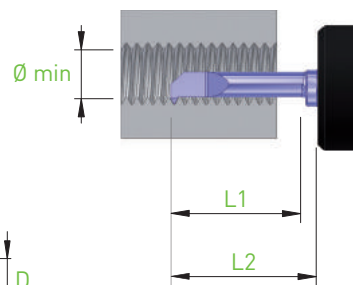
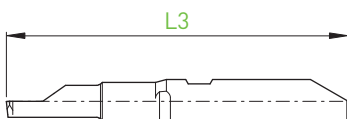
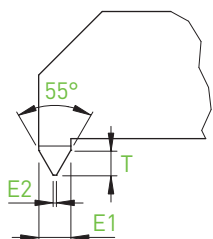
| D _{h5} | Holder | Ø min | L1 | L2 BH4... BHY4... | L2 BHS4... BHK4... | P (TPI) | E1 | E2 [0/-0.02] | T | E | C | L3 | Art. N° | R | | L | |
|-----------------|--------------------|----------|------|-------------------------|--------------------------|------------|------|-----------------|------|------|------|----|-------------------|------|----|------|----|
| | | | | | | | | | | | | | | ZTAF | ZN | ZTAF | ZN |
| 4 | BH4... | 1.85 | 4.5 | 10 | 8.5 | 48 | 0.54 | 0.09 | 0.44 | 1.67 | 0.97 | 32 | BB4R/L-1845-TP55 | ■ | ■ | □ | □ |
| | BHS4... | | | | | | | | | | | | | | | | |
| | BHY4... BHK4... | 2.55 | 6.0 | 10 | 8.5 | 40 | 0.64 | 0.10 | 0.52 | 2.25 | 1.35 | 32 | BB4R/L-2560-TP55 | ■ | ■ | □ | □ |
| D _{h5} | Holder | Ø min | L1 | L2 BH6... BHY6... | L2 BHS6... BHK6... | P (TPI) | E1 | E2 [0/-0.02] | T | E | C | L3 | Art. N° | ZTAF | ZN | ZTAF | ZN |
| 6 | BH6... | 3.70 | 11.0 | 20 | 18.5 | 32-24 | 1.08 | 0.13 | 0.91 | 3.33 | 1.83 | 47 | BB6R/L-37110-TP55 | ■ | ■ | □ | □ |
| | BHS6... | 5.10 | 15.0 | 20 | 18.5 | 26-20 | 1.30 | 0.16 | 1.09 | 4.60 | 2.05 | 47 | BB6R/L-51150-TP55 | ■ | ■ | □ | □ |
| | BHY6... | | | | | | | | | | | | | | | | |
| | BHK6... | 5.50 | 16.0 | 20 | 18.5 | 22-16 | 1.48 | 0.19 | 1.24 | 5.15 | 2.60 | 47 | BB6R/L-55160-TP55 | ■ | ■ | □ | □ |

Filetage
Gewindedrehen
Threading



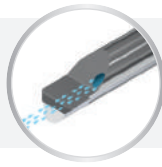
BF4... / BF6...

TP55

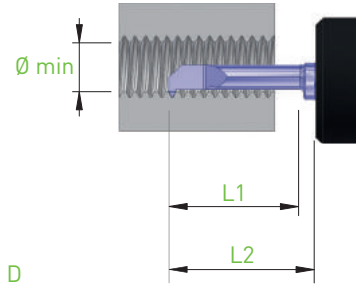
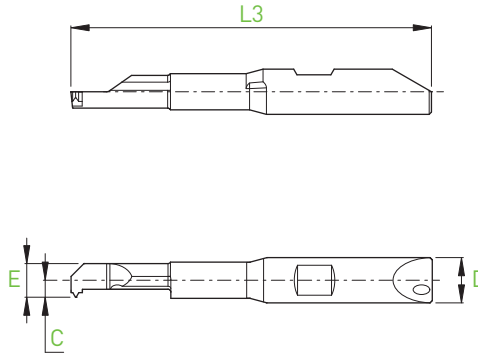
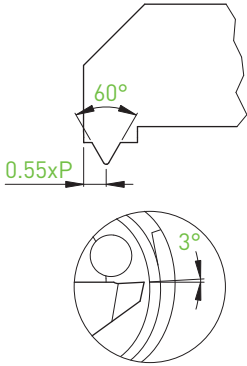


| D _{h5} | Holder | Ø min | L1 | L2 BH4... BHY4... | L2 BHS4... BHK4... | P (TPI) | E1 | E2 (0/-0.02) | T | E | C | L3 | Art. N° | R | | L | |
|-----------------|--------------------|----------|------|-------------------------|--------------------------|------------|------|-----------------|------|------|------|----|-------------------|------|----|------|----|
| | | | | | | | | | | | | | | ZTAF | ZN | ZTAF | ZN |
| 4 | BH4... | 1.85 | 4.5 | 10 | 8.5 | 48 | 0.54 | 0.09 | 0.44 | 1.67 | 0.97 | 32 | BF4R/L-1845-TP55 | ■ | ■ | □ | □ |
| | BHS4... | | | | | | | | | | | | | | | | |
| | BHY4... BHK4... | 2.55 | 6.0 | 10 | 8.5 | 40 | 0.64 | 0.10 | 0.52 | 2.25 | 1.35 | 32 | BF4R/L-2560-TP55 | ■ | ■ | □ | □ |
| D _{h5} | Holder | Ø min | L1 | L2 BH6... BHY6... | L2 BHS6... BHK6... | P (TPI) | E1 | E2 (0/-0.02) | T | E | C | L3 | Art. N° | ZTAF | ZN | ZTAF | ZN |
| 6 | BH6... | 3.70 | 11.0 | 20 | 18.5 | 32-24 | 1.08 | 0.13 | 0.91 | 3.33 | 1.83 | 47 | BF6R/L-37110-TP55 | ■ | ■ | □ | □ |
| | BHS6... | 5.10 | 15.0 | 20 | 18.5 | 26-20 | 1.30 | 0.16 | 1.09 | 4.60 | 2.05 | 47 | BF6R/L-51150-TP55 | ■ | ■ | □ | □ |
| | BHY6... | | | | | | | | | | | | | | | | |
| | BHK6... | 5.50 | 16.0 | 20 | 18.5 | 22-16 | 1.48 | 0.19 | 1.24 | 5.15 | 2.60 | 47 | BF6R/L-55160-TP55 | ■ | ■ | □ | □ |

■ = disponible / verfügbar / available
□ = selon disponibilité du stock / jenach Lagerverfügbarkeit / depending the stock availability



Profil complet métrique
Metrisches Vollprofil
Metric full profile



| D _{h5} | Holder | M (min) | Ø min | P (mm) | L1 | L2 BH4... BHY4... | L2 BHS4... BHK4... | E | C | L3 | Art. N° | R | |
|-----------------|---|---------|-------|--------|------|-------------------------|--------------------------|------|------|----|--------------------|------|----|
| | | | | | | | | | | | | ZTAF | ZN |
| 4 | BH4... BHS4... BHY4... BHK4... | M3x0.5 | 2.50 | 0.50 | 6.0 | 10 | 8.5 | 2.25 | 1.35 | 32 | BB4R-2560-TM-0.50 | ■ | ■ |
| | | M4x0.7 | 3.30 | 0.70 | 8.0 | 15 | 13.5 | 2.97 | 1.50 | 37 | BB4R-3380-TM-0.70 | ■ | ■ |
| D _{h5} | Holder | M (min) | Ø min | P (mm) | L1 | L2 BH6... BHY6... | L2 BHS6... BHK6... | E | C | L3 | Art. N° | R | |
| | | | | | | | | | | | | ZTAF | ZN |
| 6 | BH6... BHS6... BHY6... BHK6... | M5x0.8 | 4.20 | 0.80 | 10.0 | 20 | 18.5 | 3.78 | 2.10 | 47 | BB6R-42100-TM-0.80 | ■ | ■ |
| | | M6x1.0 | 5.00 | 1.00 | 12.0 | 20 | 18.5 | 4.50 | 2.20 | 47 | BB6R-50120-TM-1.00 | ■ | ■ |

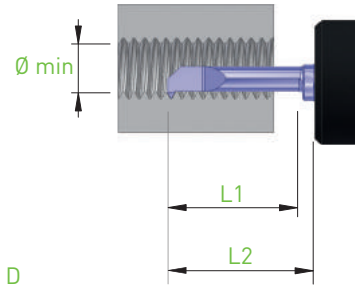
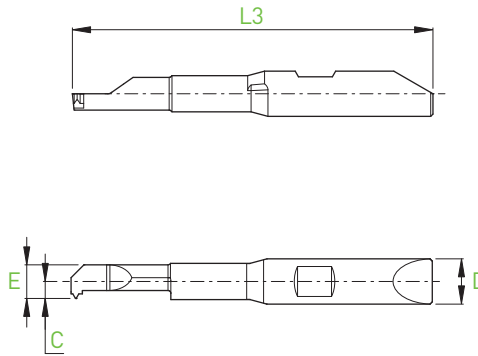
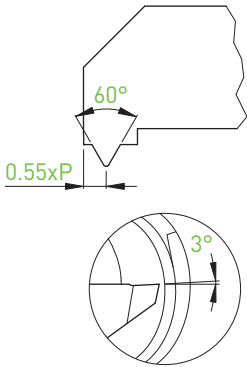
Filetage
Gewindedrehen
Threading



BF4... / BF6...

TM

Profil complet métrique
Metrisches Vollprofil
Metric full profile

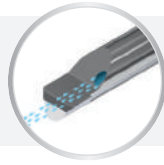


R

| D h5 | Holder | M (min) | Ø min | P (mm) | L1 | L2 BH4... BHY4... | L2 BHS4... BHK4... | E | C | L3 | Art. N° | ZTAF | ZN |
|------|---|---------|-------|--------|------|-------------------------|--------------------------|------|------|----|--------------------|------|----|
| 4 | BH4... BHS4... BHY4... BHK4... | M3x0.5 | 2.50 | 0.50 | 6.0 | 10 | 8.5 | 2.25 | 1.35 | 32 | BF4R-2560-TM-0.50 | ■ | ■ |
| | | M4x0.7 | 3.30 | 0.70 | 8.0 | 15 | 13.5 | 2.97 | 1.50 | 37 | BF4R-3380-TM-0.70 | ■ | ■ |
| D h5 | Holder | M (min) | Ø min | P (mm) | L1 | L2 BH6... BHY6... | L2 BHS6... BHK6... | E | C | L3 | Art. N° | ZTAF | ZN |
| 6 | BH6... BHS6... BHY6... BHK6... | M5x0.8 | 4.20 | 0.80 | 10.0 | 20 | 18.5 | 3.78 | 2.10 | 47 | BF6R-42100-TM-0.80 | ■ | ■ |
| | | M6x1.0 | 5.00 | 1.00 | 12.0 | 20 | 18.5 | 4.50 | 2.20 | 47 | BF6R-50120-TM-1.00 | ■ | ■ |

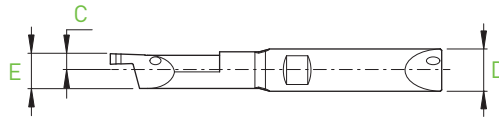
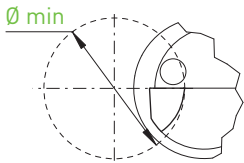
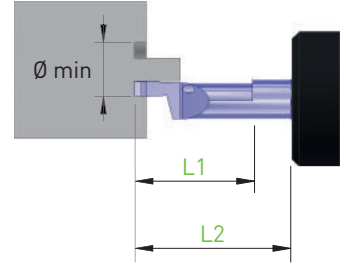
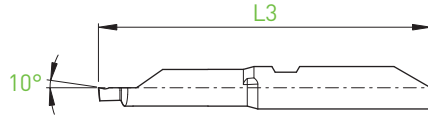
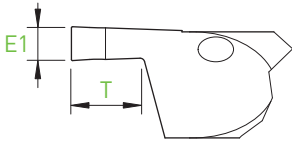
IN-LINE

- Gorge frontale extérieure
- Aussen axiales stechen
- External axial grooving



BB6...

FEG



R

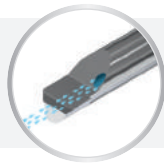
| D h5 | Holder | Ø min | L1 | L2 BH6... BHY6... | L2 BHS6... BHK6... | T | E | C | E1 | L3 | Art. N° | ZTAF | ZN |
|------|---|-------|------|-------------------------|--------------------------|------|------|------|------|----|--------------------|------|----|
| 6 | BH6... BHS6... BHY6... BHK6... | 5.0 | 15.0 | 20 | 18.5 | 3.00 | 4.90 | 2.30 | 1.50 | 47 | BB6R-50150-FEG150X | ■ | ■ |

P
 M
 N
 S
 P
 N
 S
 ZTAF
 ZN

Gorge frontale intérieure

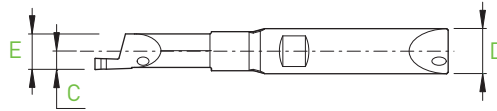
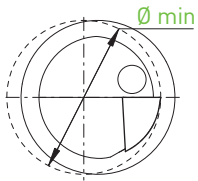
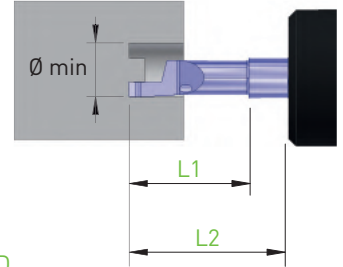
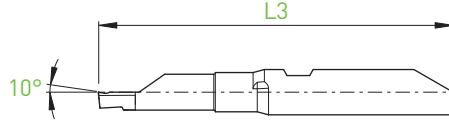
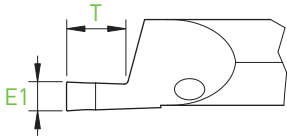
Innen axiales stechen

Internal axial grooving



BB6...

FIG



R

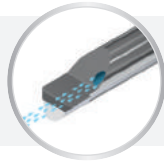
| D h5 | Holder | Ø min | L1 | L2 BH6... BHY6... | L2 BHS6... BHK6... | T | E | C | E1 | L3 | Art. N° | ZTAF | ZN |
|------|---|-------|------|-------------------------|--------------------------|------|------|------|------|----|--------------------|------|----|
| 6 | BH6... BHS6... BHY6... BHK6... | 5.0 | 15.0 | 20 | 18.5 | 3.00 | 4.75 | 2.45 | 1.50 | 47 | BB6R-50150-FIG150X | ■ | ■ |

■ = disponible / verfügbar / available

□ = selon disponibilité du stock / jenach Lagerverfügbarkeit / depending the stock availability

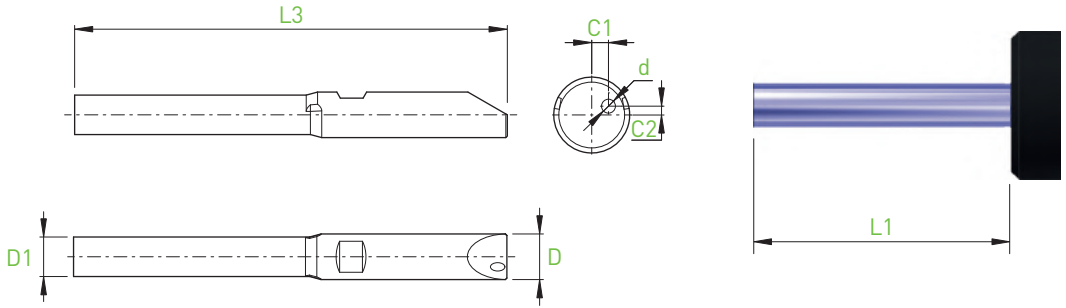
IN-LINE

Ébauches avec arrosage
 Rohlinge mit Kühlung
 Blanks with coolant



BB4... / BB6...

BB_E



| D_{h5} | Holder | L1 BH4... BHY4... | L1 BHS4... BHK4... | D1 | C1 | C2 | d | L3 | Art. N° | ZN |
|----------|---|-------------------------|--------------------------|------|------|------|------|----|----------|----|
| 4 | BH4... BHS4... BHY4... BHK4... | 20.0 | 18.5 | 3.20 | 0.84 | 0.55 | 0.85 | 42 | BB4R-E42 | ■ |
| D_{h5} | Holder | L1 BH6... BHY6... | L1 BHS6... BHK6... | D1 | C1 | C2 | d | L3 | Art. N° | ZN |
| 6 | BH6... BHS6... BHY6... BHK6... | 30.0 | 28.5 | 5.20 | 1.33 | 0.70 | 1.10 | 57 | BB6R-E57 | ■ |

Ébauches

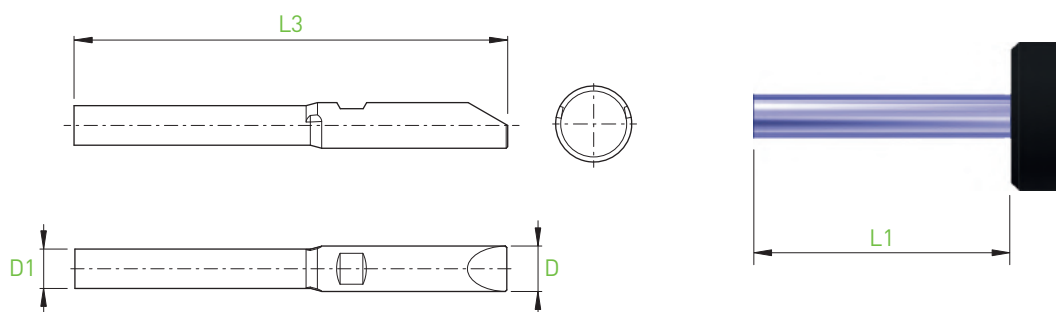
Rohlinge

Blanks



BF4... / BF6...

BF_E



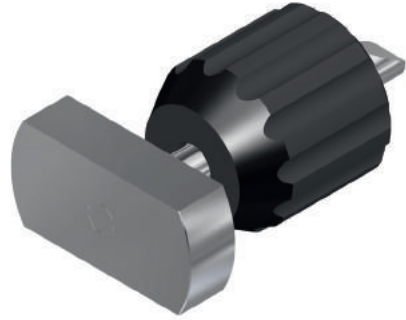
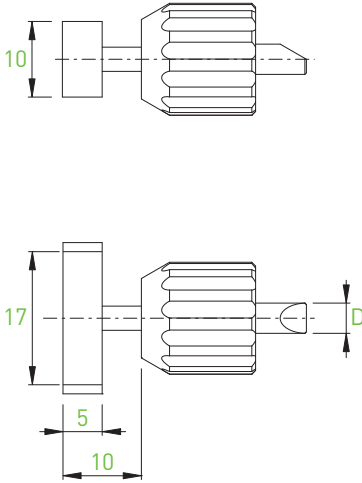
| D h5 | Holder | L1 BH4... BHY4... | L1 BHS4... BHK4... | D1 | L3 | Art. N° | ZN |
|------|---|-------------------------|--------------------------|------|----|---------|----|
| 4 | BH4... BHS4... BHY4... BHK4... | 20.0 | 18.5 | 3.20 | 42 | BF4-E42 | ■ |
| D h5 | Holder | L1 BH6... BHY6... | L1 BHS6... BHK6... | D1 | L3 | Art. N° | ZN |
| 6 | BH6... BHS6... BHY6... BHK6... | 30.0 | 28.5 | 5.20 | 57 | BF6-E57 | ■ |

IN-LINE

Jauges d'alignement
Richtplatten
Adjusting tools

MASTER

BH4 / BH6

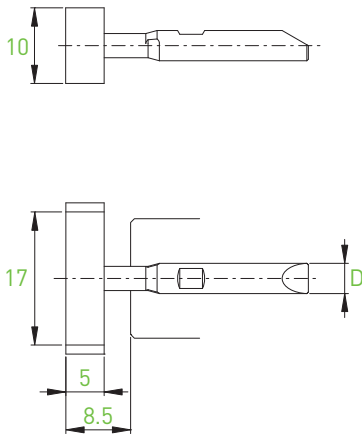


| D h5 | Art. N° | |
|------|------------|---|
| 4 | BH4-MASTER | ■ |
| 6 | BH6-MASTER | ■ |

Jauges d'alignement
Richtplatten
Adjusting tools

MASTER

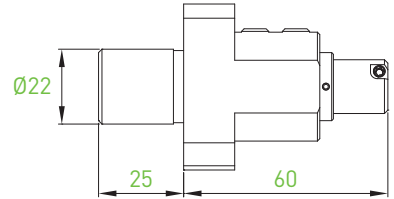
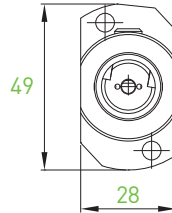
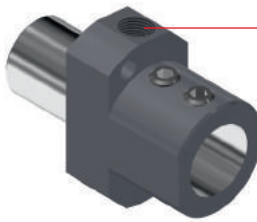
BHSY...



| D h5 | Art. N° | |
|------|--------------|---|
| 4 | BHSY4-MASTER | ■ |
| 6 | BHSY6-MASTER | ■ |

Porte-outils avec arrosage pour contre-opération - Machines STAR
 Halter mit Kühlungssystem für Gegenbearbeitung – STAR-Maschinen
 Backworking holders with through coolant – STAR-Machines

BH4 / BH6
 BHS4 / BHS6



Art. N°

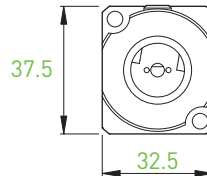
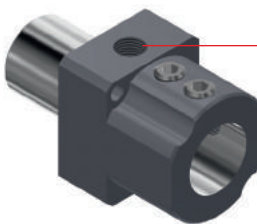
BWD1-2022-STAR-SRR

Art. N°

BHS4-D20-55-BWD1
 BHS6-D20-55-BWD1

Types of STAR machines

SR10J (T22+T24)
 SB16/20 Types C + D + E (T21-T24)
 SB20R Types E + G + N (T21-T24)
 SR20J / JN (T21-T24)
 SR20R / II / III (T21-T24)
 SR20R IV (T21-T24)
 SR32J/JN (T21-T24)
 SW12RII (T21-T24)
 SV20R (T21-T24)
 ECAS12/20 (T21-T24)
 SW20 (T21-T23)



Art. N°

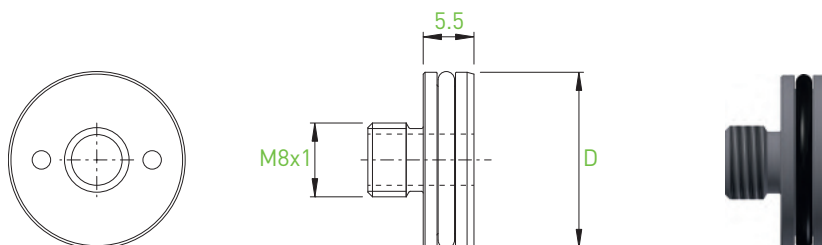
BWD1-2022-STAR-SW

Art. N°

BHS4-D20-55-BWD1
 BHS6-D20-55-BWD1

Types of STAR machines

SW12RII (T21-T28)
 SW20 (T21-T23 + T25-T27)
 SV20R (T21-T28)
 SR-20R IV (T21-T28)
 SB12/20R (T22-T24)
 SR38 (T21-T28)



| D | Art. N° | |
|-------|----------------|---|
| 19.05 | JB-M8X1-D19.05 | ■ |
| 20 | JB-M8X1-D20 | ■ |
| 22 | JB-M8X1-D22 | ■ |
| 25 | JB-M8X1-D25 | ■ |
| 25.4 | JB-M8X1-D25.4 | ■ |