



Before you begin, please be sure you have all the required materials as listed below.

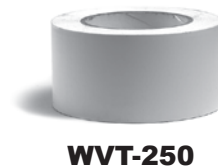
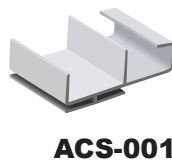
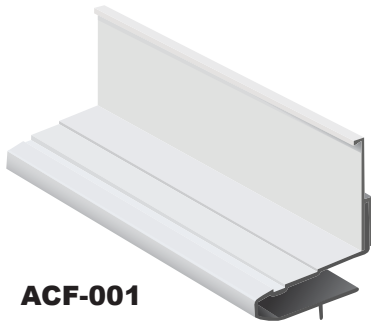
Items Required	Part No.	Packaging	Notes
AutoCover Poolform -Straight	ACF-001	8pcs./case, 64 linear ft. 64 Spacers (ACS-001)	Includes form base and form back and spacers
Spacers	ACS-001	64 Spacers	Includes 64 spacers
Form Liner	Various	8pcs./case, 64 linear ft.	Part number varies per style
White Vinyl Tape	WVT-250	2.5" x 180' roll	Optional step

Recommended Accessories	Part No.	Packaging	Notes
Z -Release 1 gallon	ZR-004	1 gallon container	Liquid release for easy removal of form liner (Powder release may be substituted)
Z -Release 5 gallons	ZR-020	5 gallon container	Liquid release for easy removal of form liner (Powder release may be substituted)

Tools Required

- Rubber Mallet
- Concrete Pencil Vibrator
- Hacksaw - Recommended for trimming Poolform and form liner fit.

Items Required



NOT SHOWN-
The various
form liner

INSTALLATION OF SYSTEM

STEP 1

Insert the AutoCover form base into the auto cover track completely around the pool. Be sure to slide the form base inside of the track. (See *Photo 1 & 2*)

NOTE: Shown to the right is for Vinyl Liner pools using an APC Auto Cover Track. For Gunitite and Fiberglass, please see pge 4 using a Coverstar track.

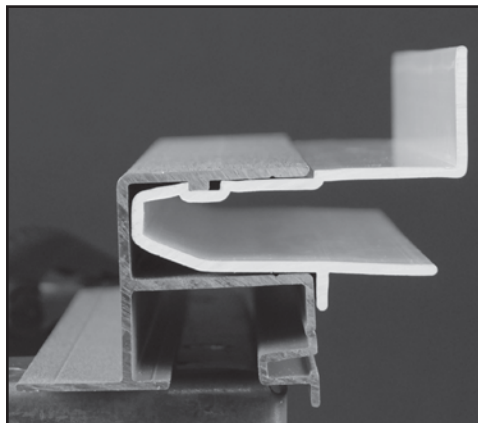


Photo 1



Photo 2

INSTALLATION OF SYSTEM - continued

STEP 2

Once the AutoCover form base is inserted into the auto cover track, take the spacers and insert them into the track approximately 12 inches apart. (See *Photo 1*)

NOTE: if you are installing on an APC track, insert the clip longwise in. If you are installing on a coverstar track, insert the clip on the short end. (See *Photo 2*)



Photo 1

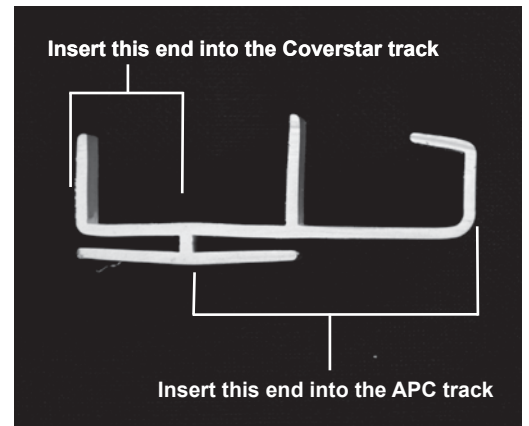


Photo 2

STEP 3

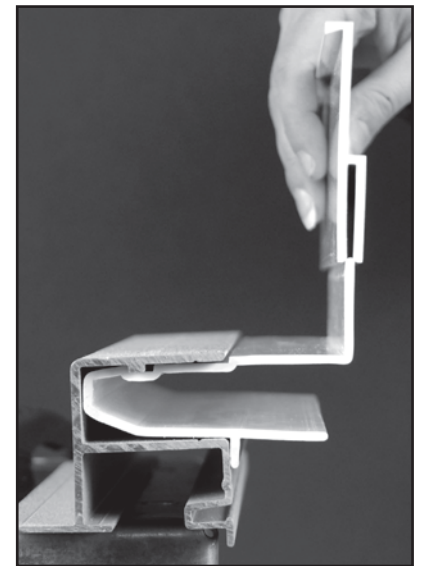
Using the White Vinyl Tape (WVT-250), tape the form base to prevent seepage of concrete during the pour. Make sure to keep more tape on the form than on the auto cover track as this will aid in the removal later.



NOTE: Do NOT use Duct Tape as this will stick to the form which will result in difficulty removing the form.

STEP 4

Insert form back over the form base by hand. Do not push form back completely to the bottom of the form base at this point. (See *Photo to the right*) Leave about $\frac{1}{8}$ " to $\frac{1}{4}$ " gap between each section to allow for expansion. It is recommended to stagger the seams in the base form and the back form so they are not aligned.



STEP 5

Insert form liner into form back around the perimeter. Notch faces up and away from pour side, fitting into the top of form back. (See *Photo 1*) Press form back down, locking liner into place. (See *Photo 2*)

NOTE: If the pour will occur the following day, it is recommend to leave the space open for the last form liner to allow for expansion and contraction overnight. Install the last liner the day of the pour.

NOTE: If a textured profile is trimmed, it may create an uneven joint. Plumber's Putty is recommended to touch up the joint to even the texture.



Photo 1



Photo 2

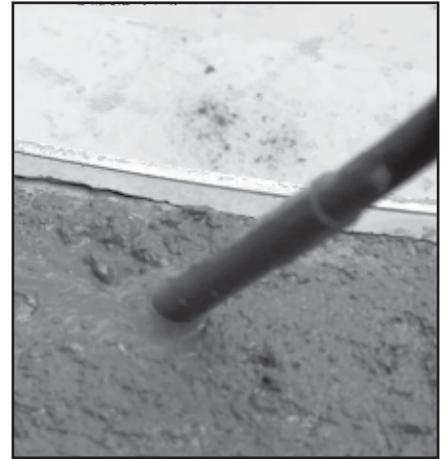
POURING THE CONCRETE

STEP 6

Fifteen minutes before the pour, use a **release agent** per manufacturer's instructions, covering the complete form liner around the perimeter. This makes the removal process easy and is required for the proper care and maintenance of the forms. Z Release (ZR-004 or ZR-020) is recommended.

STEP 7

During the pour, use the concrete pencil vibrator. Run the vibrator approximately 1" - 2" away from the edge of the form liner around the entire pool. Make sure the vibrator tip is submerged to the full depth of the concrete.



REMOVAL OF THE FORM SYSTEM

NOTE: Forms are **NOT** to be removed until the concrete has completely set.

STEP 8

Start by removing all the clips from around the pool. Next pull off the form back. **(See Photo 1)** Remove form liner around the entire pool by pulling it straight up, completely separating it from the form base. **(See Photo 2)** Move pieces to clean-up area.

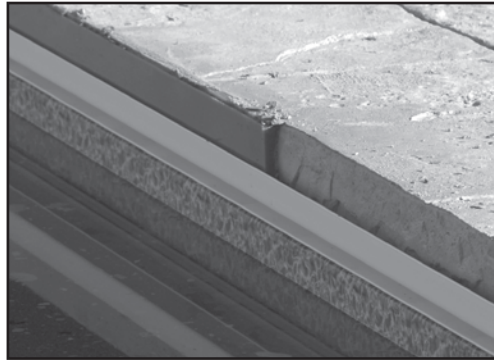


Photo 1



Photo 2

STEP 9

To remove the AutoCover form base from the auto cover track, grab the form underneath and on top. Squeeze down and loosen. **(See Photo 1)** Once it is loosened, begin on one end and pull out. **(See Photo 2)**



Photo 1



Photo 2

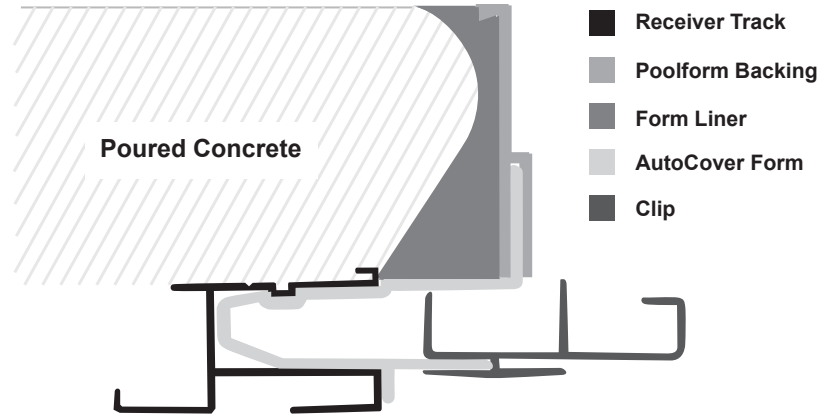
CLEANING OF THE FORM SYSTEM

STEP 10

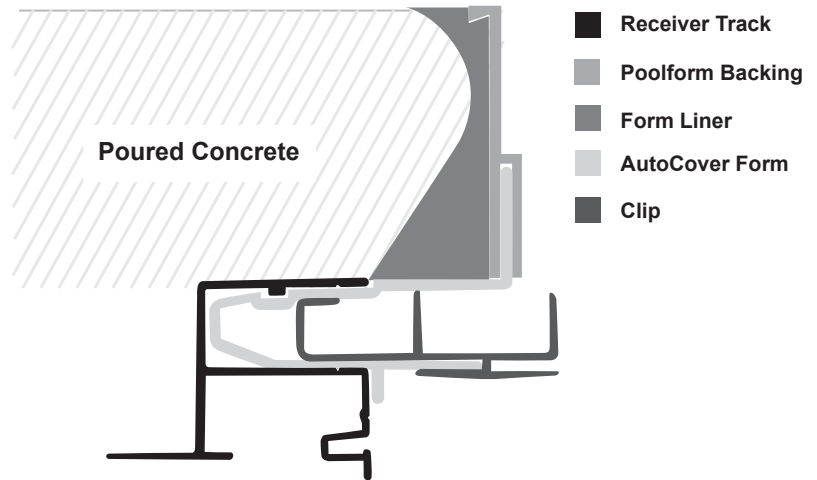
Pull the tape off and clean any remaining concrete off the forms. Rinse the form liners of any remaining residue. After cleaning store in a clean, dry area for the next use. Use proper care when cleaning and you will extend the lifespan of the form system.



AutoCover Poolform inserted into Coverstar Track



AutoCover Poolform inserted into APC Track



THE MANUFACTURER (CONCRETE COUNTERTOP SOLUTIONS, INC.) OFFERS THIS PRODUCT AND INFORMATION IN GOOD FAITH, BUT WITHOUT GUARANTEE EITHER EXPRESSED OR IMPLIED, AS CONDITIONS AND METHODS OF USE OF OUR PRODUCT ARE BEYOND OUR CONTROL

Concrete Countertop Solutions
105 Life Science Dr.
Scott Township, PA 18447



POOLFORM
CONCRETE COUNTERTOP SOLUTIONS



COUNTERFORM
CONCRETE COUNTERTOP SOLUTIONS

(570)587-3799

info@concretecountertopsolutions.com

www.concretecountertopsolutions.com