

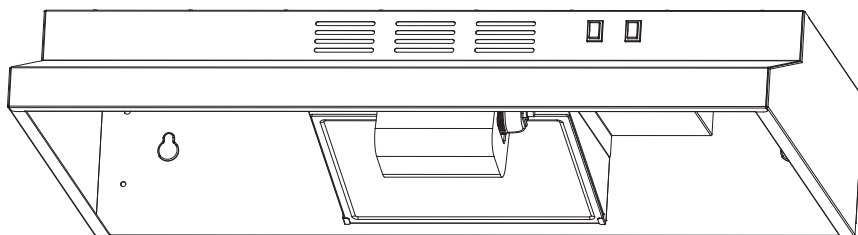
Comfee'

en

Comfee 30 inch Under Cabinet Range Hood

Power Supply: 120V
Rated Power: 70W
Frequency: 60Hz

INSTRUCTION MANUAL



**Free 3 months
extension** of the
original limited warranty
period!* Simply text a
picture of your proof of
purchase to:

1-844-224-1614

*The warranty extension is for the
three months immediately following
the completion of the product's
original warranty period.

MODEL NUMBER CVU30W2AST

READ AND SAVE THESE INSTRUCTIONS

Read all instructions using this appliance.

Save these instructions for future references

Approved for residential appliances

For residential use only

Do not attempt to install or operate your appliance until you have read the safety precautions in this manual. Safety items throughout this manual are labeled with a WARNING or CAUTION based on the risk type.

⚠This is the safety alert symbol. It is used to alert you to potential personal injury hazards. Obey all safety messages that follow this symbol to avoid possible injury or death.

⚠ WARNING

This symbol alerts you to situations that may cause serious body harm, death or property damage.

⚠ CAUTION

CAUTION indicates a potentially hazardous situation which, if not avoided, may result in minor or moderate injury.

➡ IMPORTANT

IMPORTANT indicates installation, operation, maintenance or valuable information that is not hazard related.

⚠ WARNING

TO REDUCE THE RISK OF FIRE, ELECTRIC SHOCK, OR INJURY TO PERSONS, OBSERVE THE FOLLOWING:

- A. Use this unit only in the manner intended by the manufacturer. If you have questions, contact the manufacturer
- B. Before servicing or cleaning unit, switch power off at service panel and lock the service disconnecting means to prevent power from being switched on accidentally. When the service disconnecting means can not be locked, securely fasten a prominent warning device, such as a tag, to the service panel.
- C. Installation Work and Electrical Wiring Must Be Done By Qualified Person(s) In Accordance With all Applicable Codes & Standards, Including Fire-rated Construction.
- D. Sufficient air is needed for proper combustion and exhausting of gases through the flue (chimney) of fuel burning equipment to prevent back drafting. Follow the heating equipment manufacturer's guideline and safety standards such as those published by the National Fire Protection Association (NFPA), and the American Society for Heating, Refrigeration and Air Conditioning Engineers (ASHRAE), and the local code authorities.
- E. When cutting or drilling into wall or ceiling, do not damage electrical wiring and other hidden utilities.
- F. Ducted fans must always be vented to the outdoors.

⚠ CAUTION

To reduce risk of fire and to properly exhaust air, do not vent exhaust air into spaces within walls, ceilings, attics, crawl spaces, or garages.

⚠ WARNING

TO REDUCE THE RISK OF FIRE, USE ONLY METAL DUCTWORK.

Install this hood in accordance with all requirements specified

READ AND SAVE THESE INSTRUCTIONS

⚠ CAUTION

FOR GENERAL VENTILATING USE ONLY. DO NOT USE TO EXHAUST HAZARDOUS OR EXPLOSIVE MATERIALS OR VAPORS.

READ AND SAVE THESE INSTRUCTIONS

WARNING

To Reduce The Risk Of Fire Or Electric Shock, Do Not Use This Hood With Any External Solid State Speed Control Device.

WARNING

TO REDUCE THE RISK OF A RANGE TOP GREASE FIRE.

- a) Never leave surface units unattended at high settings. Boilovers cause smoking and greasy spillovers that may ignite. Heat oils slowly on low or medium settings.
- b) Always turn hood ON when cooking at high heat or when flambeing food (I.e. Crepes Suzette, Cherries Jubilee, Peppercorn Beef Flambe').
- c) Clean ventilating fans frequently. Grease should not be allowed to accumulate on fan or filter.
- d) Use proper pan size. Always use cookware appropriate for the size of the surface element.

WARNING

NOT SUITABLE FOR USE WITH SOLID-STATE SPEED CONTROLS

AVERTISSEMENT

NE CONVIENT PAS À DES RÉGULATEURS DE VITESSE À SEMI-CONDUCTEURS.

WARNING

TO REDUCE THE RISK OF INJURY TO PERSONS, IN THE EVENT OF A RANGE TOP GREASE FIRE, OBSERVE THE FOLLOWING:

a) SMOTHER FLAMES with a close-fitting lid, cookie sheet, or metal tray, then turn off the burner. BE CAREFUL TO PREVENT BURNS. If the flames do not go out immediately, EVACUATE AND CALL THE FIRE DEPARTMENT.

b) NEVER PICK UP A FLAMING PAN - you may be burned.

c) DO NOT USE WATER, including wet dishcloths or towels - a violent steam explosion will result.

d) Use an extinguisher ONLY if:

- 1) You know you have a class ABC extinguisher, and you already know how to operate it.
- 2) The fire is small and contained in the area where it started.
- 3) The fire department is being called.
- 4) You can fight the fire with your back to an exit.

OPERATION

Always leave safety grills and filters in place. Without these components, operating blowers could catch onto hair, fingers and loose clothing.

The manufacturer declines all responsibility in the event of failure to observe the instructions given here for installation, maintenance and suitable use of the product. The manufacturer further declines all responsibility for injury due to negligence and the warranty of the unit automatically expires due to improper maintenance.

LIST OF MATERIALS

CAUTION

Remove carton carefully. Wear gloves to protect against sharp edges.

LIST OF MATERIALS

Parts included in your hood

- 3.25" x 10" Rectangular vent damper
- 2 - Grease filters
- Use and Care / Installation Manual
- E26 lampholder (Lamp not included)
- Mounting screw kit
 - 2 - 0.19" * 1.97" (0.49 * 5.0 cm) mounting screws
 - 4 - 0.2" * 0.75" (0.50 * 1.9 cm) mounting screws
 - 6 - 0.16" * 0.31" (0.40 * 0.8 cm) rectangular vent damper screws
- 2 - plastic wall anchors

NOT INCLUDED: E26 light bulb (120V, Max 9W, LED only)

Tools/Materials required

- Wire nuts
- Metal duct length to suit installation
- Vent clamps/duct tape as required
- UL listed or CSA approved 0.5" strain relief
- Remove the protective film covering the product before putting into operation.
- 0.08" drill bit for cabinet pilot holes
- Pencil
- Wire cutter / stripper
- Measuring tape
- Caulking gun and weatherproof caulking compound
- Flat-blade screwdriver
- Phillips screwdriver
- Saber or keyhole saw
- Safety glasses
- Gloves

For cabinets with recessed bottoms:

- Two - 2" (5.1 cm) wide filler strips. Length and thickness determined by recess dimensions.
- Four flat head wood screws or machine screws with washers and nuts (to attach filler strips).

ELECTRICAL REQUIREMENTS

Observe all governing codes and ordinances.

Ensure that the electrical installation is adequate and in conformance with National Electrical Code, ANSI/NFPA 70 (latest edition), or CSA Standards C22.1-94, Canadian Electrical Code, Part 1 and C22.2 No. 0-M91 (latest edition) and all local codes and ordinances.

If codes permit and a separate ground wire is used, it is recommended that a qualified electrician determine that the ground path is adequate.

A copy of the above code standards can be obtained from:

National Fire Protection Association

One Batterymarch Park
Quincy, MA 02269

CSA International

8501 East Pleasant Valley Road
Cleveland, OH 44131-5575

- A 120 volt, 60 Hz., AC only, 15-amp, fused electrical circuit is required.
- If the house has aluminum wiring, follow the procedure below:
 1. Connect a section of solid copper wire to the pigtail leads.
 2. Connect the aluminum wiring to the added section of copper wire using special connectors and/or tools designed and UL listed for joining copper to aluminum.

Follow the electrical connector manufacturer's recommended procedure. Aluminum/copper connection must conform with local codes and industry accepted wiring practices.

- Wire sizes and connections must conform with the rating of the appliance as specified on the model/serial rating plate.
The model/serial plate is located on the left side of the range hood.
- Wire sizes must conform to the requirements of the National Electrical Code, ANSI/NFPA 70 (latest edition), or CSA Standards C22.1-94, Canadian Electrical Code, Part 1 and C22.2 No. 0-M91 (latest edition) and all local codes and ordinances.

LOCATION REQUIREMENTS

→ IMPORTANT

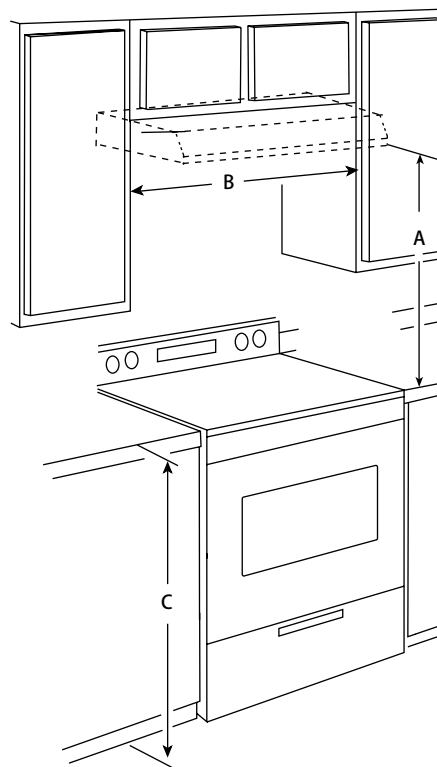
Observe all governing codes and ordinances.

- It is the installer's responsibility to comply with installation clearances¹.
- Range hood location should be away from strong draft areas, such as windows, doors and strong heating vents.
- Cabinet opening dimensions that are shown must be used. Given dimensions provide minimum clearance.
- Grounded electrical outlet is required. See "Electrical Requirements" section.
- All openings in ceiling and wall where canopy hood will be installed must be sealed.

For Mobile Home Installations

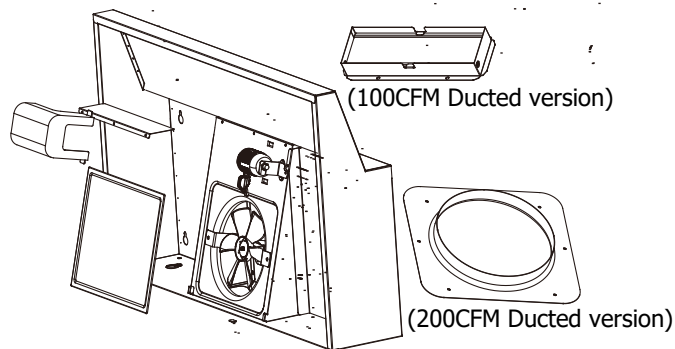
The installation of this range hood must conform to the Manufactured Home Construction Safety Standards, Title 24 CFR, Part 328 (formerly the Federal Standard for Mobile Home Construction and Safety, Title 24, HUD, Part 280) or when such standard is not applicable, the standard for Manufactured Home Installation 1982 (Manufactured Home Sites, Communities and Setups) ANSI A225.1/NFPA 501A, or latest edition, or with local codes.

Cabinet Dimensions

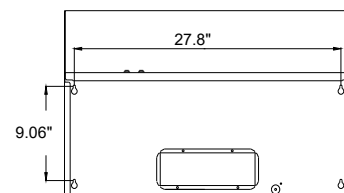
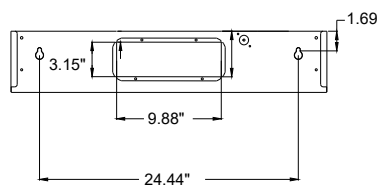
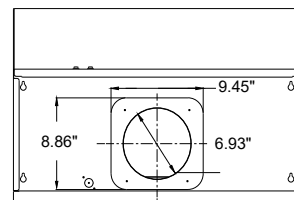
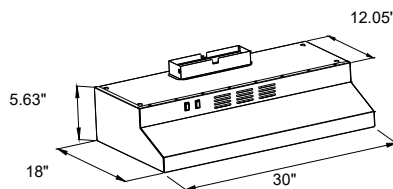


- A. 24" min. for electric cooking surfaces
27" min. for gas cooking surfaces
30" suggested max.
- B. 30" min. cabinet opening width for 30" models and 36" min. cabinet width for 36" models.
- C. 36" base cabinet height

PRODUCT DIMENSIONS



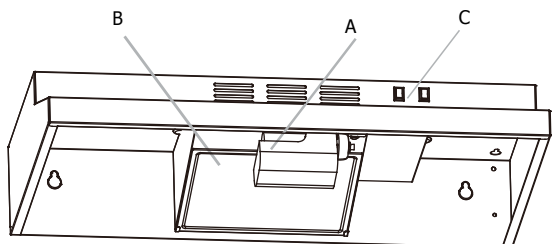
unit: inch



RANGE HOOD USE INSTRUCTIONS

USE INSTRUCTIONS

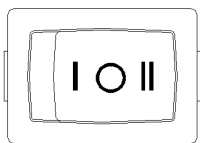
The range hood is designed to remove smoke and cooking vapors from the cooktop area. For best results, start the hood before cooking and allow it to operate several minutes after the cooking is complete to clear all smoke from the kitchen.



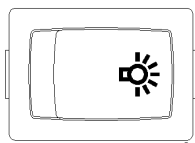
- A. LED lights
- B. Grease filter
- C. Control knobs

Range Hood Controls

The hood controls are located at the bottom front section of the unit.



Motor Switch



Lamp Switch

Operating the Light

Push lamp Switch

Operating the Fan

Push Motor Switch

— :Motor Low Position

≡ :Motor High Position

○ :Motor Off

Cleaning

WARNING

To Reduce The Risk Of Fire Or Electrical shock disconnect from power supply before cleaning.

IMPORTANT

Clean the hood and grease filters frequently according to the following instructions. Replace grease filter before operating hood.

IMPORTANT

Exterior Surfaces

Do not use soap-filled scouring pads, abrasive cleaners, Cooktop Polishing Creme, steel wool, gritty washcloths or paper towels.

To avoid damage to the stainless steel, do not use cleaners that contain chlorine.

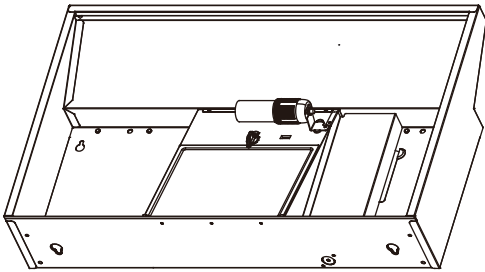
Cleaning Method:

Clean the stainless with warm soapy water using a clean sponge or cloth. Rinse with clean water and dry with a soft clean cloth. **DO NOT USE** any cleaners like Stainless Steel cleaners or any other types of cleaners containing any abrasive, chlorides, chlorines or ammonia. It is recommended to use mild dish soap and water or a 50/50 solution of water and vinegar.

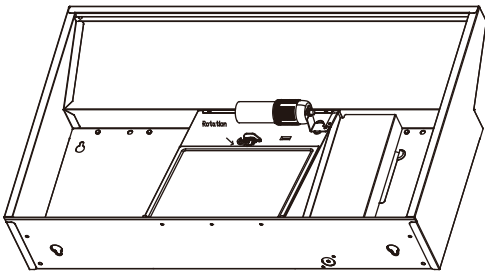
RANGE HOOD CARE

To clean or replace grease filter:

1. Take down lamp-chimney, take down screw.



2. According to "↘" direction loosen Plastic seat



3. To clean grease filter, soak the filters in hot water using a mild detergent. Rinse well and shake to dry.

NOTE

Do not use ammonia. The aluminum on the grease filter will corrode and darken.

NOTE

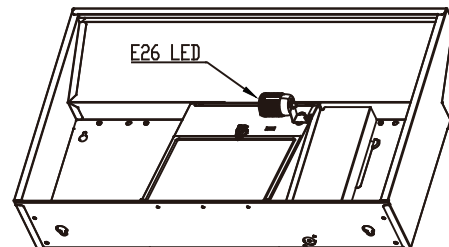
The grease filter is dishwasher safe. To avoid grease filter damage while cleaning, place filter into the dishwasher top rack for cleaning.

WARNING

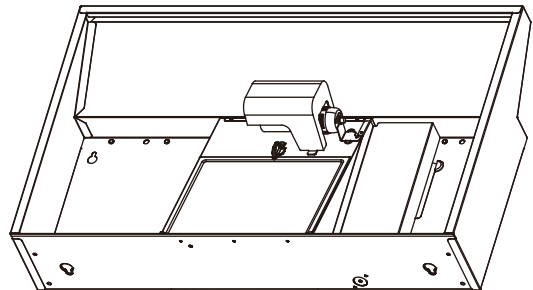
Electrical Shock Hazard
Disconnect power before servicing.
Replace all parts and panels before operating.
Failure to do so can result in death or electrical shock.

Assembly LED lights (lamp not included)

1. Use an E26 LED Bulb, Spin to tighten
E26 light bulb (120v, Max 9W, LED only)



2. Place the lampshade in the hole



VENTING REQUIREMENTS

- Do not terminate the vent system into an attic or other enclosed area.
- Do not use a 4" (102 mm) laundry-type wall cap.
- Use metal vent only. Rigid metal vent is recommended. Plastic or metal foil vent is not recommended.
- The length of vent system and number of elbows should be kept to a minimum to provide efficient performance.

For the most efficient and quiet operation:

- Use no more than three 90° elbows.
- Make sure there is a minimum of 24" (610mm) of straight vent between the elbows if more than 1 elbow is used.
- Do not install 2 elbows together.
- Use clamps or duct tape to seal all joints in the vent system.
- The vent system at exit must have a cold air damper.
- Use caulking to seal exterior wall or roof opening around the cap.
- Best performances are reached with straight piping, without elbows and using smooth pipe.

Cold Weather Installations

An additional back draft damper should be installed to minimize backward cold air flow and a thermal break should be installed to minimize conduction of outside temperatures as part of the vent system. The damper should be on the cold air side of the thermal break. The break should be as close as possible to where the vent system enters the heated portion of the house.

Makeup Air

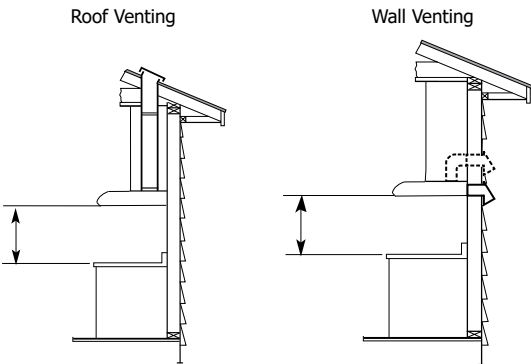
Local building codes may require the use of makeup air systems when using ventilation systems greater than specified CFM of air movement. The specified CFM varies from locale to locale. Consult your HVAC professional for specific requirements in your area.

Venting Methods

Vent system can terminate either through the roof or wall. Use 3.25" x 10" (83 x 254 mm) rectangular with a maximum vent length of 35 ft (10.7 m) for vent system.

NOTE

Flexible vent is not recommended. Flexible vent creates both back pressure and air turbulence that greatly reduce performance.



Calculating Vent System Length

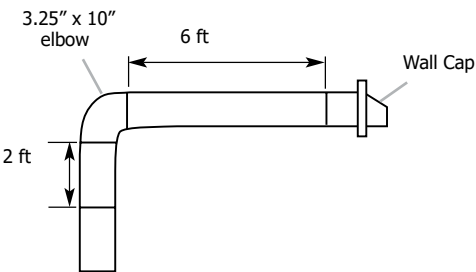
To calculate the length of the system you need, add the equivalent feet (meters) for each vent piece used in the system.

These directions are for rectangular vent installation only. If you choose to use round rigid metal venting the minimum diameter to use is 8".?

3.25" x 10" (83mm x 254 mm) rectangular Vent System

Vent Piece		
3.27" x 10" 90° elbow	5.0 ft	
3.27" x 10" flat elbow	12.0 ft	
3.27" x 10" wall cap	0.0 ft	

Example Vent System



Maximum Recommended Length	= 35 ft
1 - 90° elbow	= 5.0 ft
8 ft straight	= 8.0 ft
1 - wall cap	= 0.0 ft
Length of 3.25" x 10" system	= 13.0 ft

VENTING REQUIREMENTS

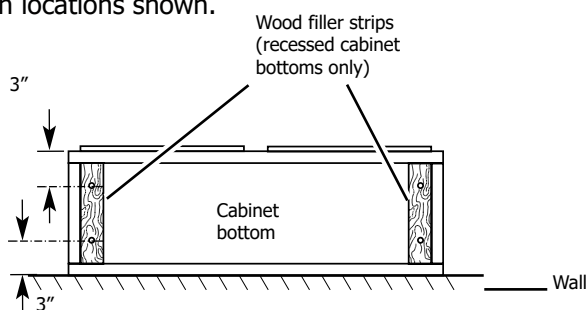
PREPARE THE LOCATION

NOTE

Before making cutouts, make sure there is proper clearance within the ceiling, wall or cabinet.

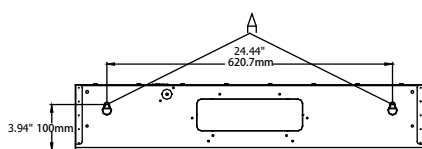
Fitting material is provided to secure the hood to most types of walls and cabinet s. However, a qualified technician must verify suitability of the materials in accordance with the type of wall and cabinet.

1. Disconnect power.
2. Select a flat surface for assembling the range hood. Place covering over that surface.
3. Lift the range hood and set it upside down onto covered surface.
4. If cabinet has recessed bottom, add "two - 2" wide filler strips. Length and thickness determined by recess dimensions. Four flat head wood screws or machine screws with washers and nuts to attach filler strips in locations shown.

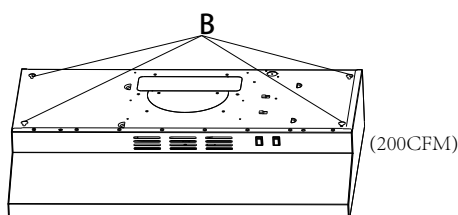
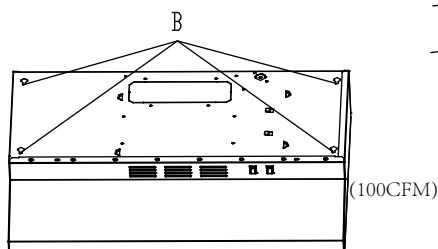


5. Lift the range hood up under cabine and determine final location y centering beneath cabinet. Mark on the underside of cabinet the location of the 4 keyhole mounting slots on the range hood (See slot dimensions on page 6).Mark rear mounting screw hole locations.

Set range hood aside on a covered surface.



A. Keyhole slot

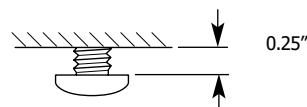


6. Use 0.08" drill bit and drill 4 pilot holes as shown for top range hood support.

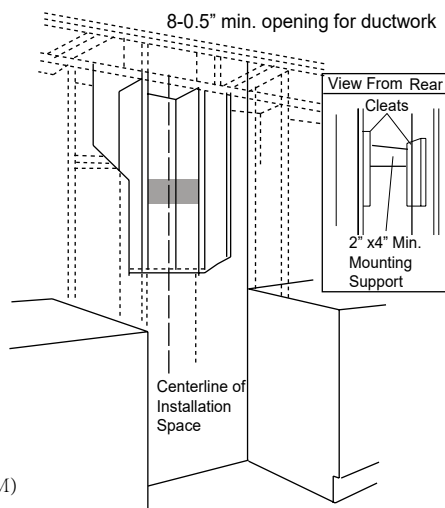
NOTE: Make the drill holes on the thin area of the slot.



7. Install the 4 - 5 mm x 19 mm mounting screws in pilot holes. Leave about 0.25" (6.4 mm) space between screw heads and cabinet to slide range hood into place.



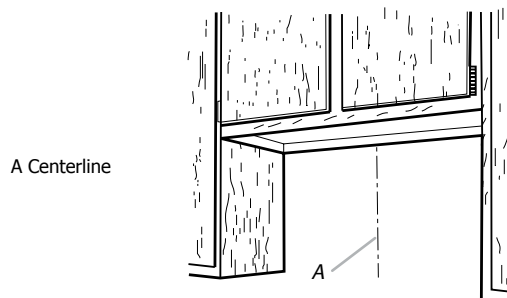
8. Install framing for hood rear support
If drywall is present, using the rear mounting screw hole locations marked in the previous step cut away enough drywall to expose 2 vertical studs at the rear mounting screw holes locations. Install horizontal support at least 2" X 4" between two wall studs at the rear mounting screw holes location. The horizontal support must be flush with the room side of the studs. Use cleats behind both sides of the support to secure to wall studs. Reinstall drywall and refinish.
IMPORTANT – Framing must be capable of supporting 100 lbs.



Range Hood Location Preparation

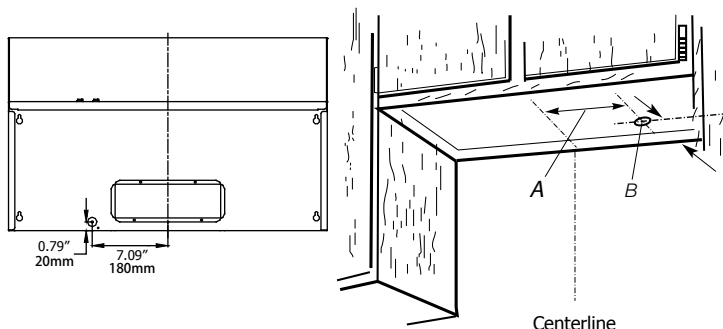
Determine Wiring Hole Location

1. Determine and clearly mark a vertical centerline on the wall and cabinet bottom.



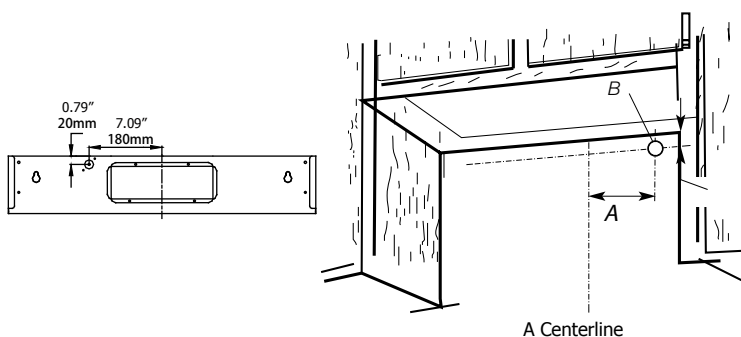
Wiring From the Top

2. Mark a line distance (A) from the right of the centerline on the underside of the cabinet. Mark the point on this line that is from back wall. Drill a 1.25" (32 mm) diameter hole (B) through the cabinet at this point.
3. The actual size of the product is below, and the user is installed according to the actual demand



Wiring Through the Wall

1. Mark a line distance (A) from the right of the centerline on the underside of the wall. Mark the point on this line that is from the underside of the cabinet. Drill a 1.25" (32 mm) diameter hole (B) through the rear wall at this point.
2. The actual size of the product is below, and the user is installed according to the actual demand



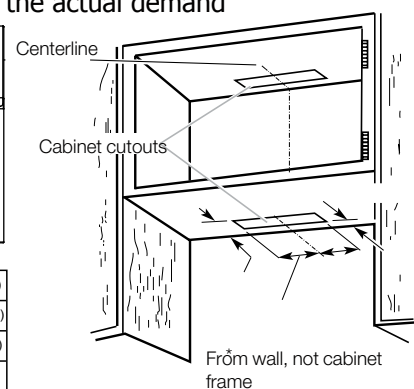
Roof Venting

cutout on the underside of cabinet top and bottom:

1. Mark lines from the back wall on the centerline of the underside of cabinet.
2. Mark lines to the right and left of the centerline on the underside of cabinet.
3. Use saber or keyhole saw to cut a rectangular opening for vent.
4. Repeat steps 1-3 for the underside of the top of the cabinet.
5. The actual size of the product is below, and the user is installed according to the actual demand

A	3.9"	(99mm)	E	4.69"	(119mm)
B	3.15"	(80mm)	F	4.29"	(109.5mm)
C	10.63"	(270mm)	G	1.16"	(29.5mm)
D	9.88"	(251mm)	H	0.79"	(20mm)

(Rectangle Ducted version)



Wall Venting

To make a 4.25" x 10.5" (108 mm x 267 mm) rectangle in the wall:

1. Mark lines from the back wall on the centerline of the underside of cabinet.
2. Mark lines to the right and left of the centerline on the underside of cabinet.
3. Use saber or keyhole saw to cut a rectangular opening for vent.
4. Repeat steps 1-3 for the underside of the top of the cabinet.
5. The actual size of the product is below, and the user is installed according to the actual demand

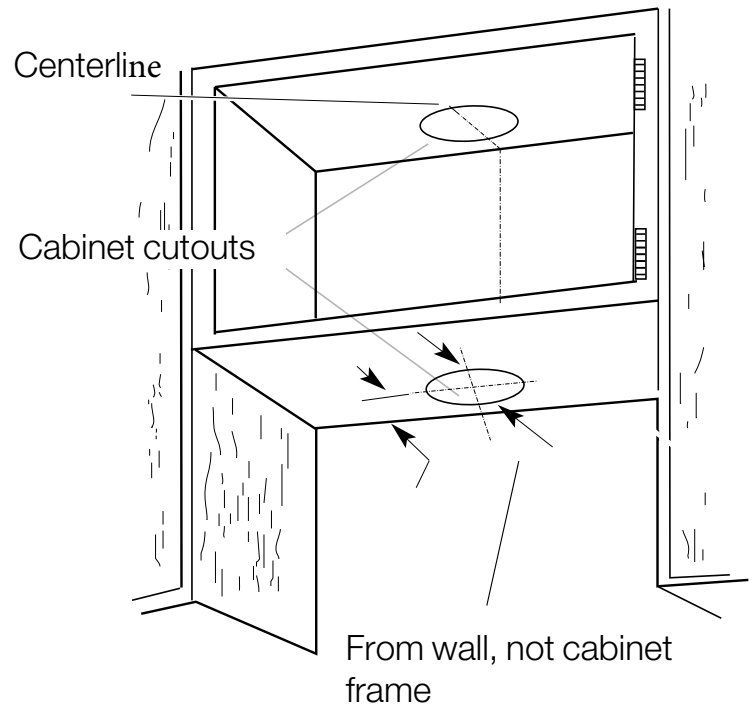
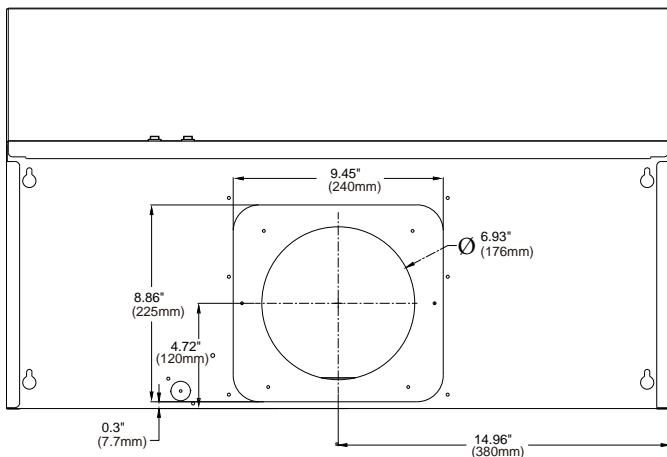
A	4.49"	(114mm)
B	4.13"	(105mm)
C	0.98"	(24.8mm)
D	0.61"	(15.4mm)
E	3.15"	(80mm)
F	3.89"	(98.8mm)
G	9.88"	(251mm)
H	10.63"	(270mm)

LOCATION PREPARATION

Roof Venting (7" Circular interface)

To make 7.5"(190mm) rectangular cutout on the underside of cabinet top and bottom:

1. Mark lines from the back wall on the centerline of the underside of cabinet.
2. Mark lines to the right and left of the centerline on the underside of cabinet.
3. Use saber or keyhole saw to cut a rectangular opening for vent.
4. Repeat steps 1-3 for the underside of the top of the cabinet.
5. The actual size of the product is below, and the user is installed according to the actual demand.



(Circular Ducted Installation)

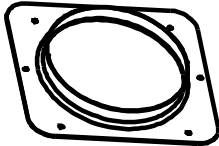
PREPARE THE LOCATION (200CFM Ducted version)

Install Vent System

1. Install vent through the vent opening in upper cabinet

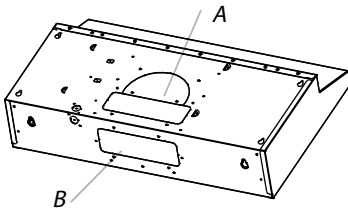
2. INSTALL RANGE HOOD (Ducted version)

- Detach the Ø7.08" (Ø 180mm) rectangular vent damper from the package.

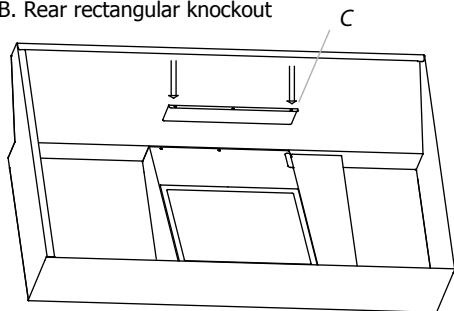


A. Ø7.08" (Ø 180mm) rectangular vent damper

- For roof installations, remove the top rectangular vent knockout A. For wall installations, remove the rear rectangular vent knockout B.



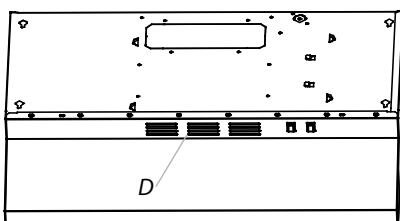
A. Top rectangular knockout
B. Rear rectangular knockout



C. Long baffle

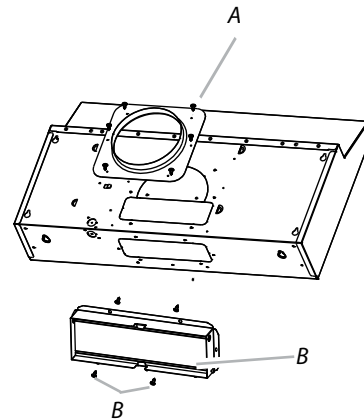
3. Internal recycle air outlet

- Use D air outlet, retention A and B materials



Vent Damper Installation

Install 3.25" x 10" (8.3 x 25.4 cm) vent damper. Attach to range hood using the indicated screws provided in hardware kit.



Install the 3.25" x 10" (8.3 x 25.4 cm) rectangular vent transition
A. 3.25" x 10" (8.3 x 25.4 cm)

- If a vent damper is installed with a wall cap with damper, check that they do not interfere with each other. Remove the vent damper flap if they interfere.

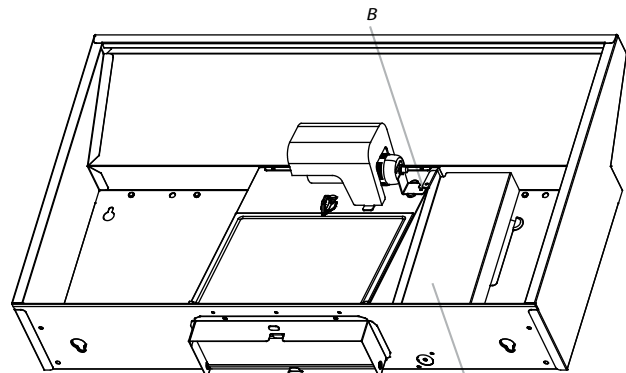
Power Supply Cable Installation

- For direct wire installations, run the home power supply cable according to the National Electric Code or CSA standards and local codes and ordinances.

NOTE

Do not reconnect power until the installation is complete.
Before starting the installation, remove the vent grill and grease filters.

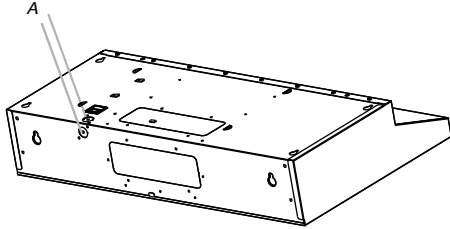
- Remove the screws from the terminal box cover. Remove terminal box cover and set aside.



A. Terminal box cover
B. Screw

INSTALLING THE HOOD

3. Remove the power supply knockout from the top or rear of the vent hood (depending on the incoming location of your home power supply cable) and install a UL listed or CSA approved 0.5" strain relief.



A. Power supply knockout

4. Lift the hood into final position
Feed enough electrical wire through the 0.5" UL listed or CSA approved strain relief to make connections in the terminal box. Tighten the strain relief screws.
5. Position the range hood so that the large end of the keyhole slots are over the mounting screws. Then push the hood toward the wall so that the screws are in the neck of the slots. Tighten the mounting screws, making sure the screws are in the narrow neck of slots.
6. Add the 2 rear 0.19" * 1.94" (0.49 * 5.0 cm) rear mounting screws into the narrow neck of the rear keyhole slots. These should screw into the horizontal support that was placed between the two wall studs in Connect ventwork to hood.
7. Seal joints with vent clamps or duct tape to make secure and airtight.
8. Check that back draft dampers work properly.

MAKE ELECTRICAL CONNECTION

WARNING

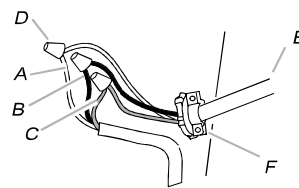
Electrical Shock Hazard

Disconnect power before servicing.

Replace all parts and panels before operating.

Failure to do so can result in death or electrical shock.

1. Disconnect power.



- A. White wires
- B. Black wires
- C. Green ground wire
- D. UL listed wire connector
- E. Home power supply cable
- F. UL listed or CSA approved 0.5" strain relief

2. Use UL listed wire connectors and connect white wires (A) together.
3. Use UL listed wire connectors and connect black wires (B) together.

TROUBLESHOOTING

Problem	Possible Causes	Solutions
After installation, the unit doesn't work.	<ol style="list-style-type: none"> 1. The power line and the cable connector is not connected properly. 2. The wires from the switches are disconnected or loose. 	<ol style="list-style-type: none"> 1. Check the power connections. 2. Make sure the wires on the switches are connected properly.
Light works, but motor is not turning.	<ol style="list-style-type: none"> 1. The motor is defective, possible seized. 2. The motor wire is not connected. 	<ol style="list-style-type: none"> 1. Change the motor. 2. Make sure the motor wire is plugged into the terminal box connector.
The unit is vibrating.	<ol style="list-style-type: none"> 1. The motor is not secure in place. 2. Damaged blower wheel. 3. The hood is not secured in place. 	<ol style="list-style-type: none"> 1. Tighten the motor in place. 2. Change the blower. 3. Check the installation of the hood.
The motor is working, but the lights are not.	<ol style="list-style-type: none"> 1. Defective lamp. 2. The lamp is loose. 3. The wires on the light switch are loose. 	<ol style="list-style-type: none"> 1. Change the lamp. 2. Make sure the lamp is seated properly. 3. Make sure the wires on light switch are connected properly.
The hood is not venting out properly.	<ol style="list-style-type: none"> 1. The hood might be hanging too high from the cook top. 2. The wind from the opened windows or opened doors in the surrounding area are affecting the ventilation of the hood. 3. Blockage in the duct opening or duct work. 4. The direction of duct opening is against the wind. 5. Using the wrong size of ducting. 	<ol style="list-style-type: none"> 1. Check installation instructions. 2. Close all the windows and doors to eliminate the outside wind flow. 3. Remove all the blocking from the duct work or duct opening. 4. Adjust the duct opening direction. 5. Change the ducting to correct size.
Vent grill or grease filter is vibrating.	<ol style="list-style-type: none"> 1. Vent grill or grease filter is loose. 	<ol style="list-style-type: none"> 1. Make sure vent grill or grease filter is installed correctly.



1 YEAR LIMITED WARRANTY

This is the only express warranty for this product and is in lieu of any other warranty or condition.

This product is warranted to be free from defects in material and workmanship for a period of one (1) year from the date of original purchase. During this period, your exclusive remedy is repair or replacement of this product or any component found to be defective, at our option; however, you are responsible for all costs associated with returning the product to us and our returning the product or component under this warranty to you. If the product or component is no longer available, we will replace with a similar one of equal or greater value.

This warranty does not cover wear from normal use or operation that does not comply with the instruction manual or damages to the product resulting from accident, alteration, abuse, or misuse. This warranty extends only to the original consumer purchaser or gift recipient. Keep the original sales receipt, as proof of purchase is required to make a warranty claim. This warranty is void if product is used for other than single-family household use or subjected to any voltage and waveform other than as specified on the label.

We exclude all claims for special, incidental, and consequential damages by breach of express or implied warranty. All liability is limited to amount of the purchase price. Every implied warranty, including any statutory warranty or condition of merchantability or fitness for particular purpose, is disclaimed except to the extent prohibited by law, in which case such warranty or condition is limited to the duration of this written warranty.

This warranty gives you specific legal rights. You may have other legal rights that vary depending on where you live. Some states or provinces do not allow limitations on implied warranties or special, incidental consequential damages, so the foregoing limitations may not apply to you.

Customer Service:

Phone: 866-646-4332

[illegible]