

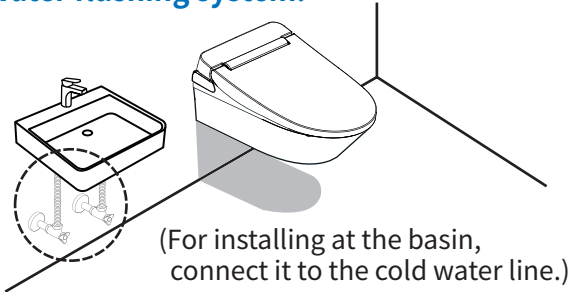
VOVO STYLEMENT Install Guide

Easily install the WATERJET bidet by yourself !

Note: Before the installation, please check the size of your toilet using the template first.

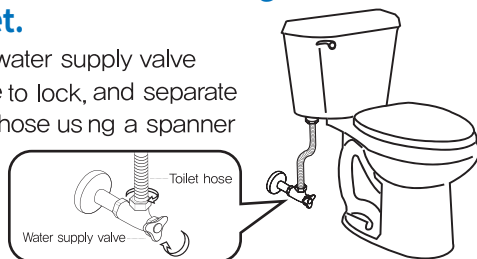
- ※ Do not use heavy duty tools and excessive power when tightening the connections.
- ※ Do not use Teflon tape when connecting the hose to the water supply valve and the bidet unit.
- ※ This product is water tested for quality check.

1 How to install bidet seat on basin with water flushing system.



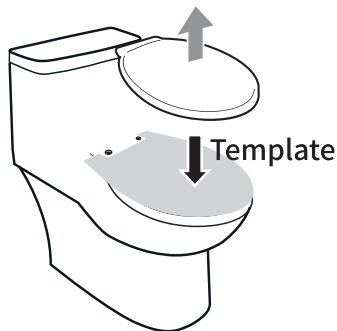
1-1 How to install bidet seat on general tank toilet.

- Turn the water supply valve clockwise to lock, and separate the toilet hose using a spanner



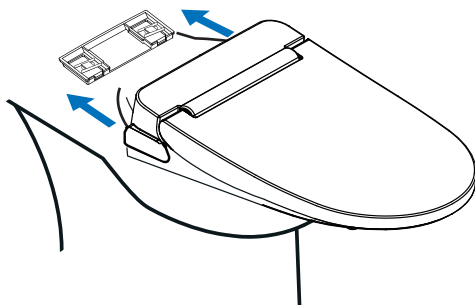
3 Remove the existing toilet seat.

- Unfasten the nut and remove the toilet seat.
- Save the old toilet seat lid and nuts for reinstallation later.
- Place the template on the toilet after removing the toilet seat cover.



5 Install the bidet and secure the remote control holder

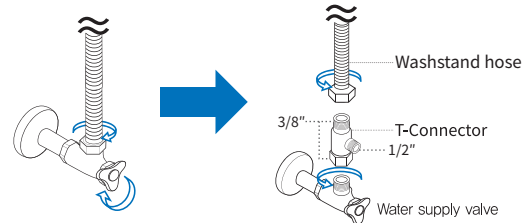
- Slide the bidet and install it.



- Secure the remote control holder to the wall with screws or peel off the double-sided tape sticker on the back of the remote

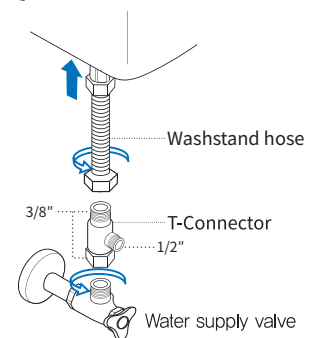
2 Connect the T-connector to the basin hose.

- Turn off the cold waterline supply valve clockwise, and disconnect the basin hose using a spanner.
- Install the T-connector between the valve and the basin hose.



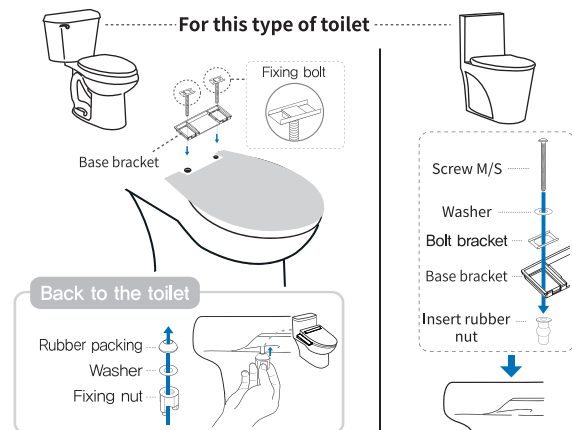
2-1 Connect the T-valve to the toilet and toilet hose

- Place the T-Connector between the toilet and the toilet hose



4 Install the base bracket.

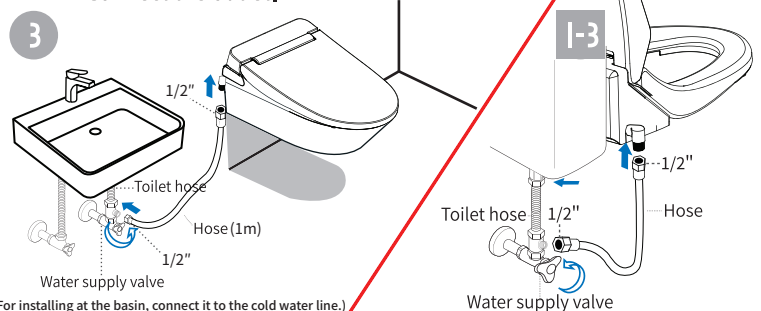
- Place the fixing bolt on the base bracket.
- Align the front of the bidet body and the front of the toilet before fastening the nuts.



Open the water valve first and then plug-in the power.

6 Connect the hose and turn on the water

- Connect the hose to the T-Connector and the bidet.
- Turn the water supply valve counterclockwise to allow water flow.
- Connect the outlet.



How to use

VB-6000SE (elongated) VB-6100SR (round)
VB-4000SE (elongated) VB-4100SR (round)

Stop

Press the Stop button when you want to stop the function.

Dry

Use this after using wash function

- Wipe off the water with toilet paper before using dry function for pleasant using.

Water Pressure, Nozzle Position

- Can control in 5 levels of water pressure and nozzle position.

Water Pressure and Nozzle Position Adjustment

- Water pressure and nozzle position can be adjusted in 5 levels.



UV LED Light (Option)

- UV LED eliminates germs and bacteria as well as sterilizing the bowl.
- When UV LED function is activated, UV LED will turn on and it will automatically turn off while seated.

※ Power save ※

- Power save mode will set the water/seat temperature to 30°C, saving energy when not in use.
- The temperature will go back up to the set mode once it detects movement on the sensor.

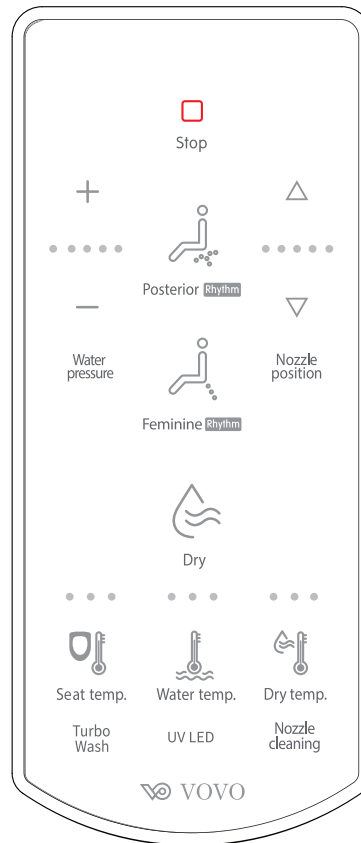
Side Panel

Power

Press the button for 3 seconds if you wish to turn off the bidet. Press the button if you wish to stop posterior, feminine or dry function.

Power save Setting

Press the STOP button once on the side control panel of the product without seating to operate power save mode. Press the STOP button once more without seating to turn off the power save mode.



Posterior/Rhythm

- Press Posterior/Rhythm button, to operate washing function.
- Press Posterior/Rhythm button again during using this function. Rhythm(Pulsating) function will work.

Feminine/Rhythm

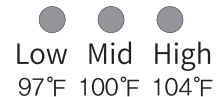
- Press Feminine/Rhythm button, to operate Feminine function.
- Press Feminine/Rhythm button again when during using this function, Rhythm(Pulsating) function will work.

Turbo Wash

- Press Turbo button, Turbo wash will operate.
- It starts from the lowest water pressure.

Water Temperature, Seat Temperature, Dry Temperature

- 3 levels of Water Temperature / Seat Temperature / Dry Temperature



Nozzle Cleaning

- You can clean the nozzle by pressing the Nozzle cleaning button.

Auto Deodorization

(VB-4000SE, VB-4100SR)

- The default product setting is always ON on automatic deodorization.
- While someone sits on the seat (detects by the seat sensor) auto deodorization turns on and activates. If a person stands up after using the bidet (if it is not detected by the seat sensor), it will be turned off after 1 minute of operation.

※ Auto Deodorization on/off ※

(VB-4000SE, VB-4100SR)

Without a person seating on the seat, the side panel has a feature of turning on/off using the dry button.



Dry

Press the button to operate the functions. The operations will stop if you press the button again.

Posterior Wash / Feminine Wash

Press the button to operate the functions. The operations will stop if you press the button again.