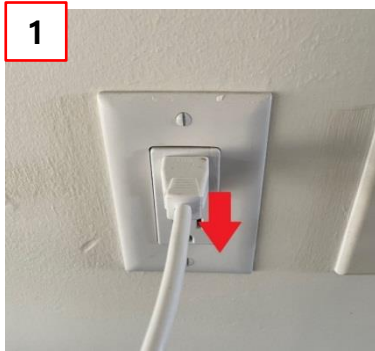


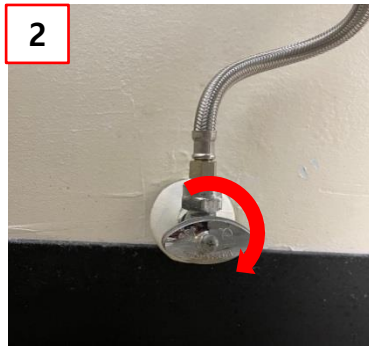
HOW TO RESOLVE HEATED SEAT MALFUNCTIONING (SEAT CHANGE)

How to resolve heated seat malfunctioning(Seat Change)

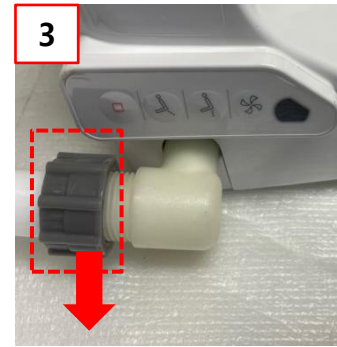
1. Open the bidet seat



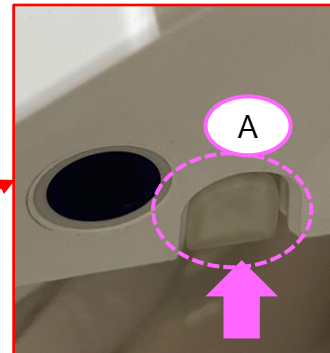
① Unplug the cord



② Close the water valve clockwise



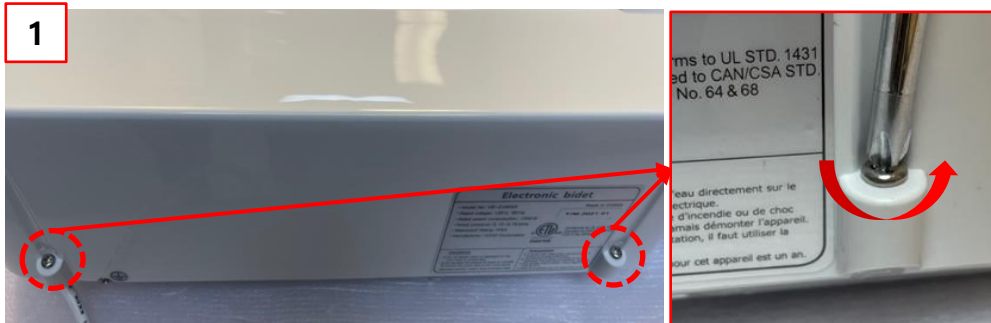
③ Detach the hose from the unit



④ Push Section A(Located on the right side of the bidet seat) and slide the bidet seat out in the direction B

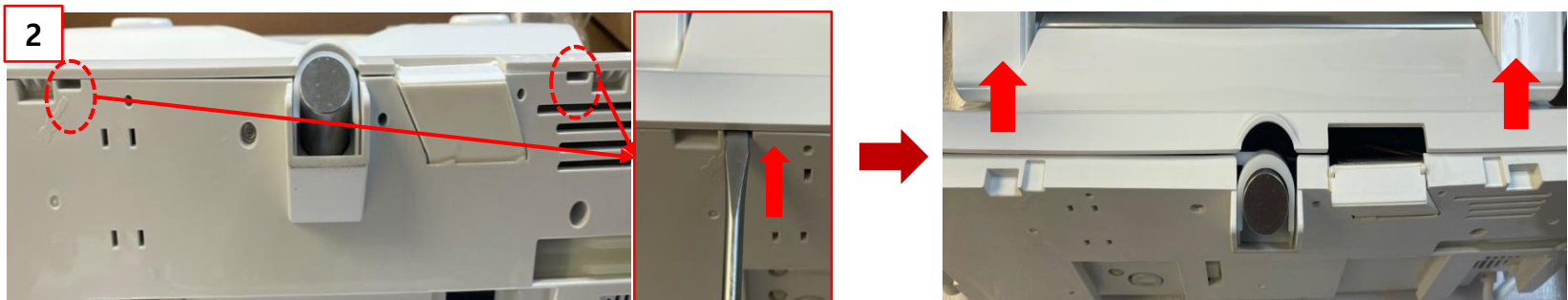
How to resolve heated seat malfunctioning(Seat Change)

2. Open the cover base



[Click for the Video Guide](#)

① Unscrew the 2 screws at the back using a Philips head driver.



② Put the flat screwdriver in the pointed location and lift it up to detach the base from the cover base.

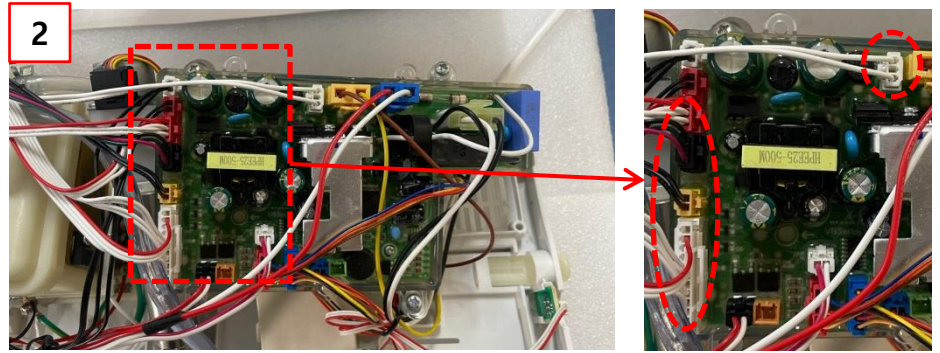
- Make sure not to open the cover base fully so the wires inside do not get damaged.

How to resolve heated seat malfunctioning(Seat Change)

3. Check the seat harness



① Place the bidet like the photo



② Detach all harness that connects the seat and the MAIN PCB.



③ Detach the SIDE IR harness

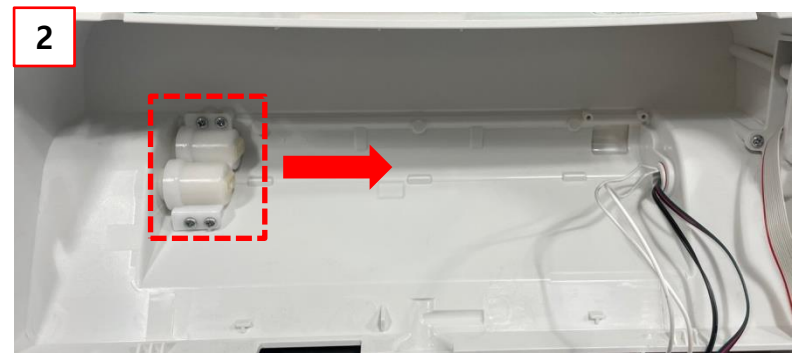
※ Applies only to 6000 Series

How to resolve heated seat malfunctioning(Seat Change)

4. Disassemble SEAT and SEAT COVER



① Place the bidet like the photo



② Unscrew the 4 screws that is connected with the damper and detach it in the direction shown in the photo.



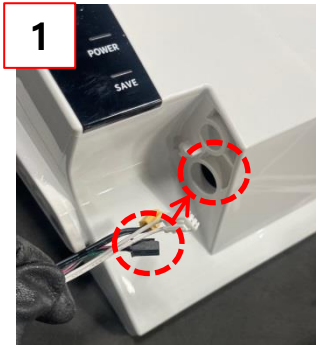
③ Detach the Seat cover in the direction shown



④ Detach the Seat in the direction shown

How to resolve heated seat malfunctioning(Seat Change)

5. How to replace the SEAT



① Put the seat harness wires inside the hole and attach the seat



② Attach the SEAT COVER shown in the photo



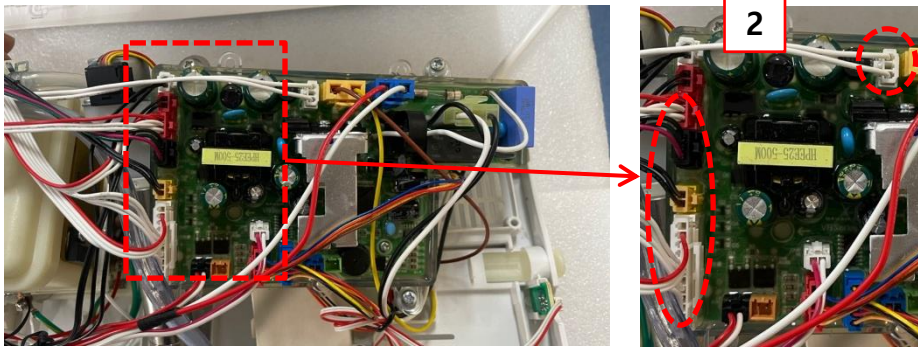
③ Place the unit like the photo



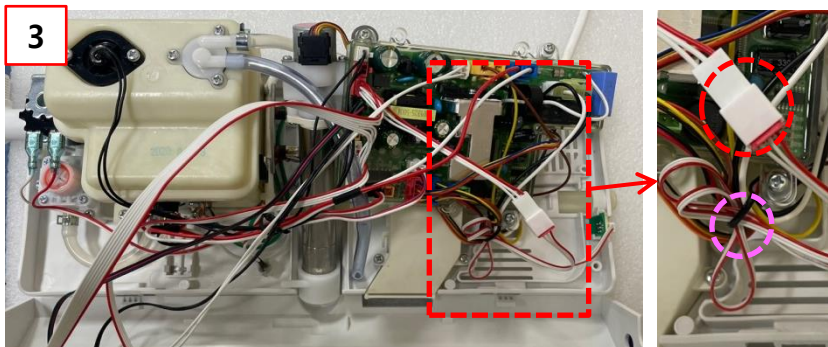
④ Attach the damper into the hole and screw the 4 screws shown in the photo.

How to resolve heated seat malfunctioning(Seat Change)

6. Assemble the SEAT and SEAT COVER



① Attach all harness that connects the seat and the MAIN PCB in same color.



② Attach the SIDE IR harness

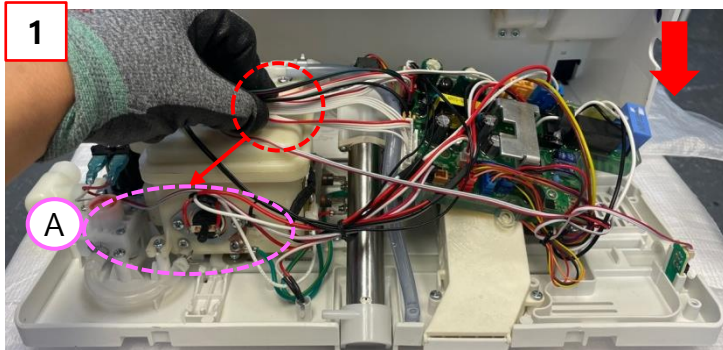
※ Applies only to 6000 Series

How to resolve heated seat malfunctioning(Seat Change)

7-1. Close the cover base



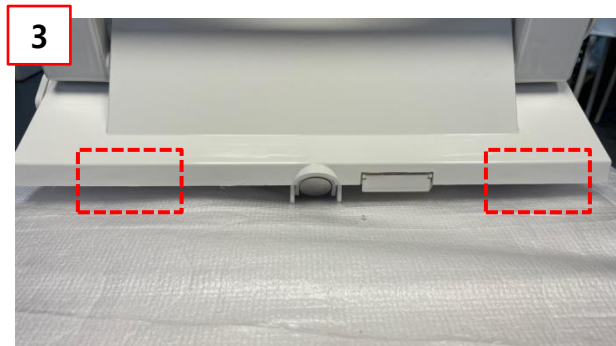
[Click for the Video Guide](#)



① Put the harness linked with the seat on the A side and close the cover base



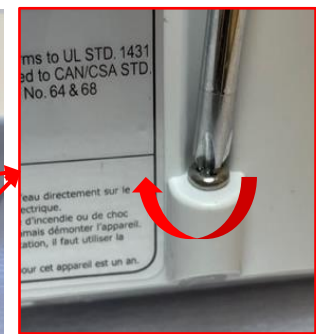
② Push the unit towards the direction shown in the photo



③ Check whether the cover base is assembled perfectly. If you heard clicks, it's perfectly done.



④ Screw the 2 screws back using a Phillips head driver.

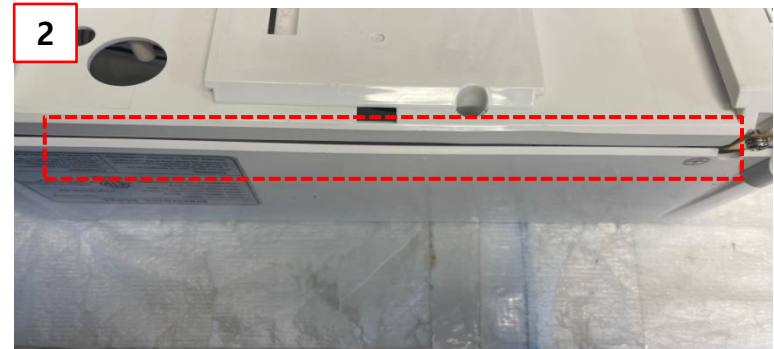


How to resolve heated seat malfunctioning(Seat Change)

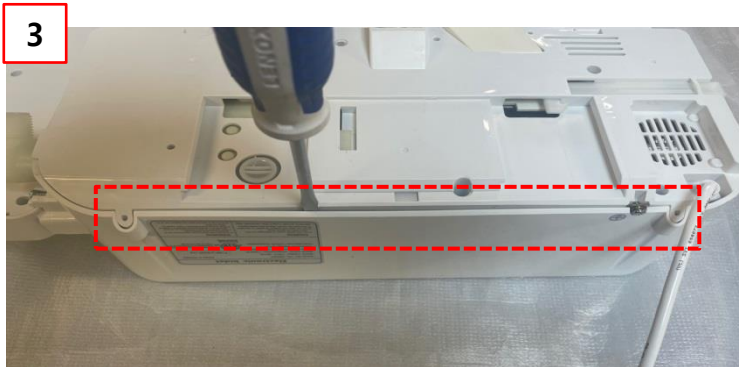
7-2. When you have difficulty closing the cover base



① Flip the bidet seat so you can see the under the bidet seat.



② Check if the base goes inside the cover base



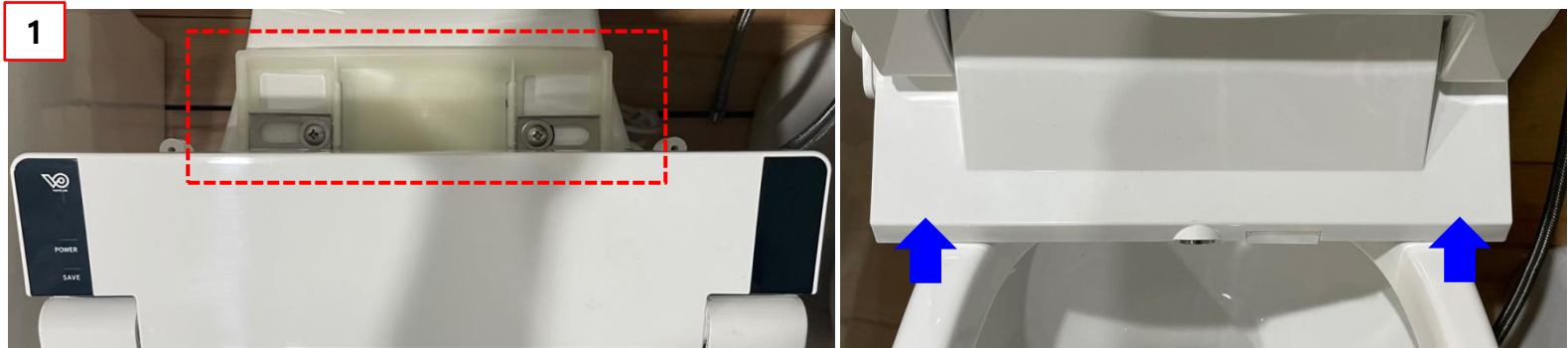
③ If not, please use a flat driver to make sure that the base goes inside the cover base.



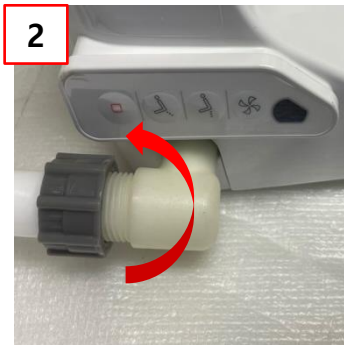
④ Push the unit towards the direction shown in the photo

How to resolve heated seat malfunctioning(Seat Change)

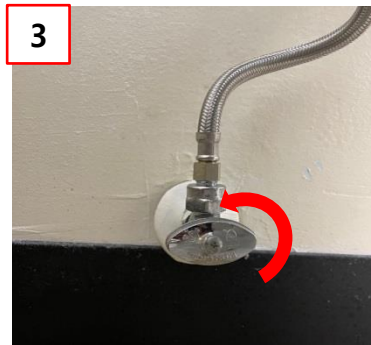
8. Attach the bidet seat



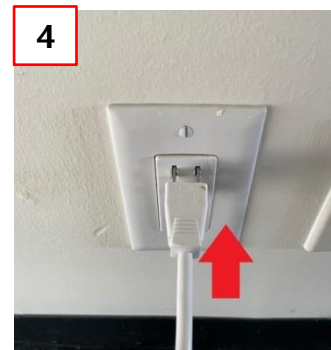
① Slide the bidet seat to the installed base bracket



② Connect the hose



③ Open the water valve



④ Plug the unit back