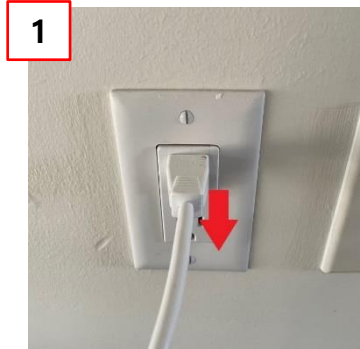


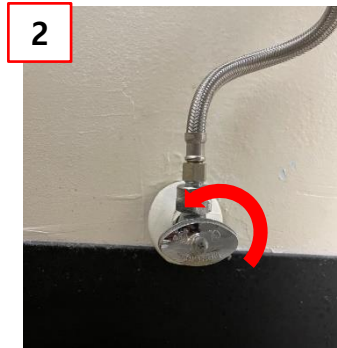
HOW TO RESOLVE HEATED SEAT MALFUNCTIONING

How to resolve heated seat malfunctioning

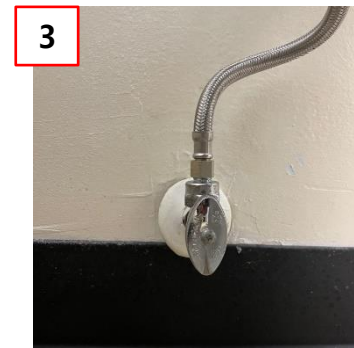
1. Open the water valve and reset the unit



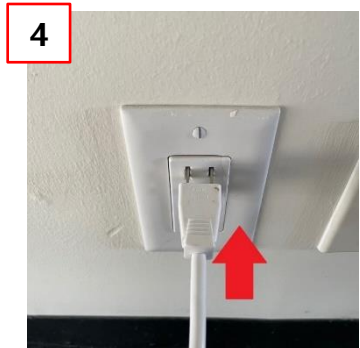
① Unplug the cord



② Fully open the water valve counterclockwise



③ Water valve fully opened

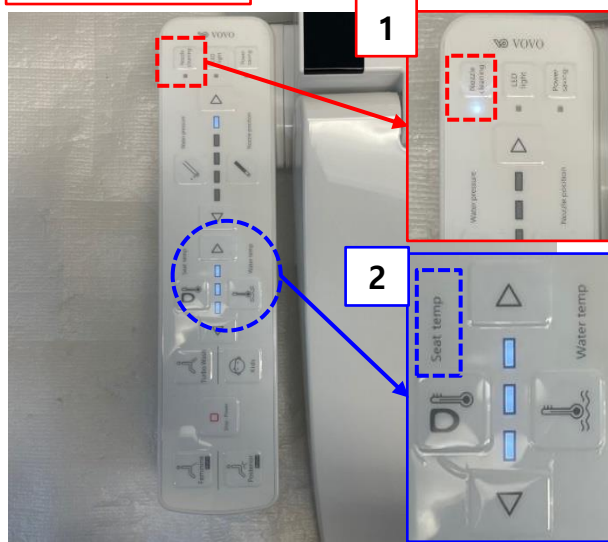


④ Plug the cord back

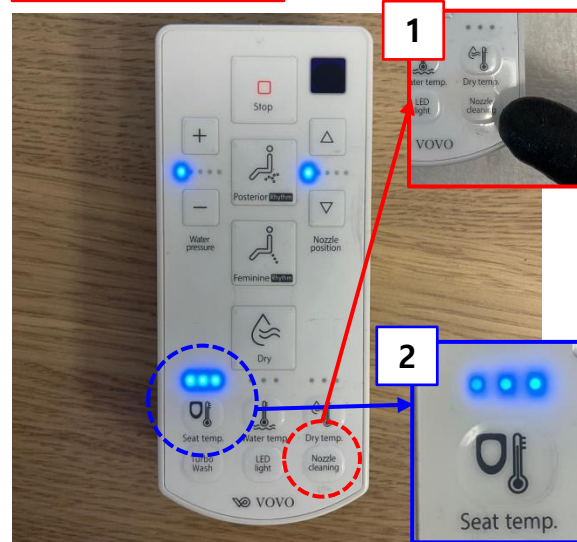
How to resolve heated seat malfunctioning

2. Check the setting in Remote control/ Side panel

3000 Series



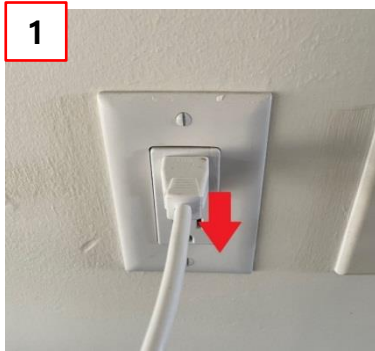
4000/6000 Series



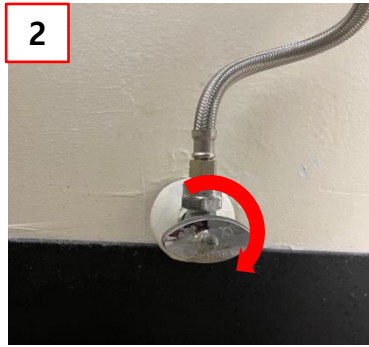
- ① Push the nozzle cleaning button to check if the bidet seat is linked with the Side Panel(3000 Series), Remote control(4000/6000 Series)
- ② Set up the Seat temp setting to level 3 with the Side Panel(3000 Series), Remote control(4000/6000 Series)
- ③ Wait 3-4 minutes after setting up the seat temperature and check if it gets warm.

How to resolve heated seat malfunctioning

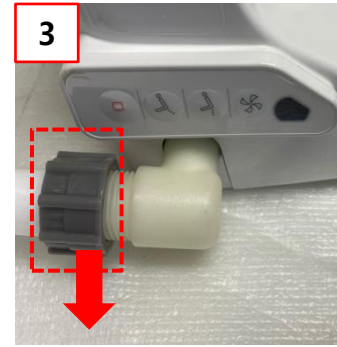
3-1. Open the bidet seat



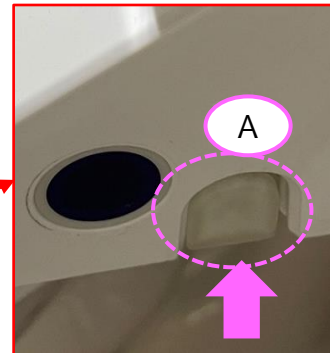
① Unplug the cord



② Close the water valve clockwise



③ Detach the hose from the unit



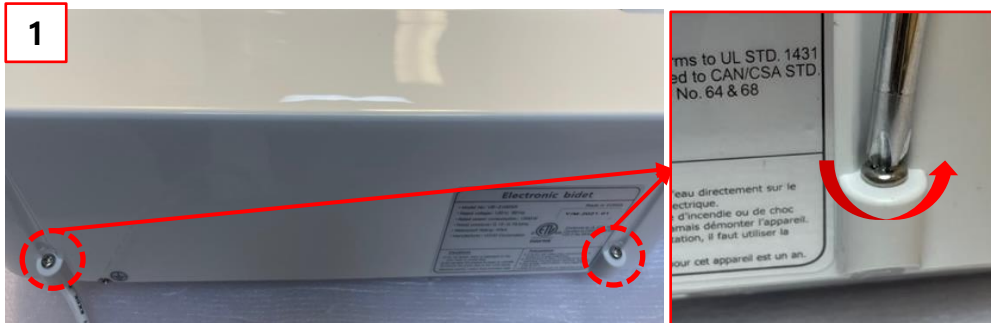
④ Push Section A(Located on the right side of the bidet seat) and slide the bidet seat out in the direction B

How to resolve heated seat malfunctioning

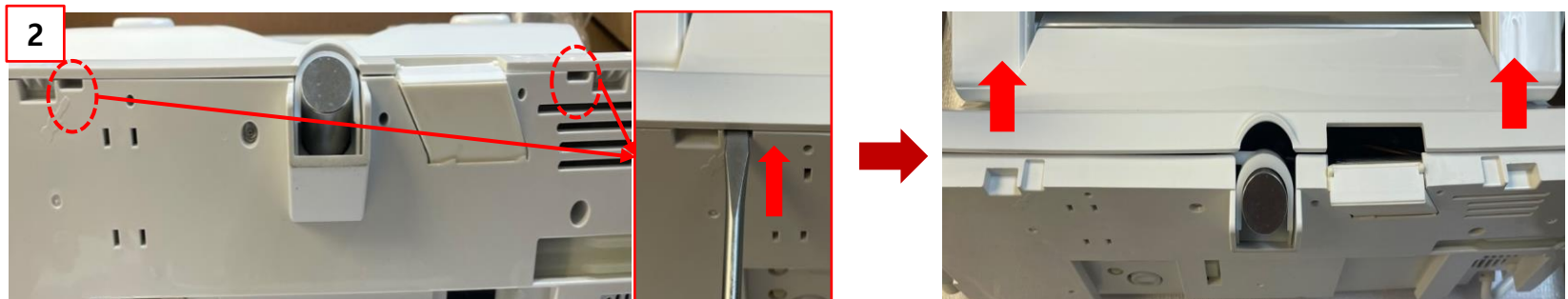
3-2. Open the cover base



[Click for the Video Guide](#)



① Unscrew the 2 screws at the back using a Philips head driver.



② Put the flat screwdriver in the pointed location and lift it up to detach the base from the cover base.

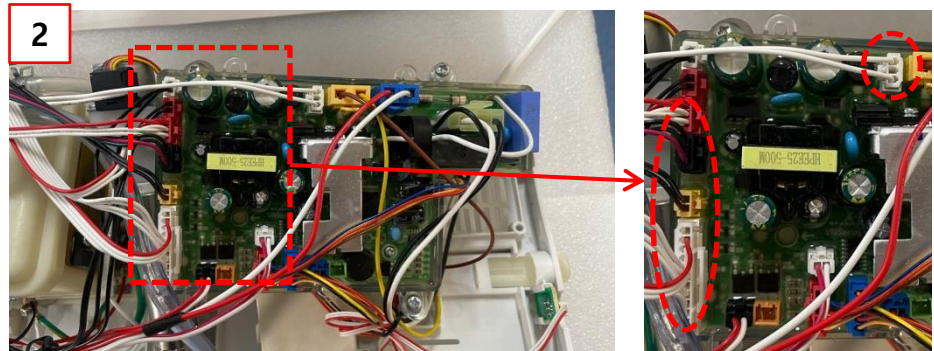
- Make sure not to open the cover base fully so the wires inside do not get damaged.

How to resolve heated seat malfunctioning

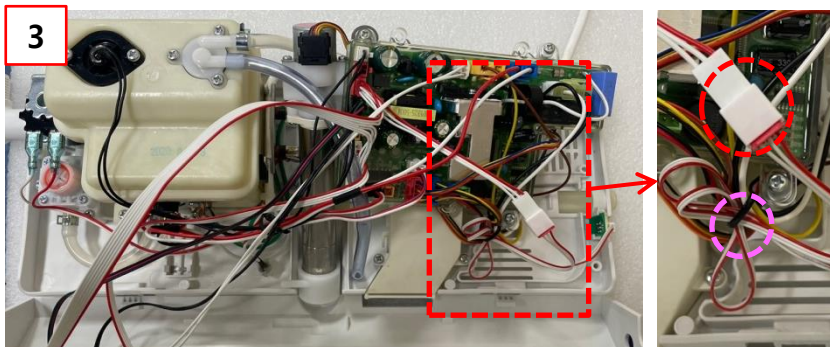
3-3. Check the seat harness



① Place the bidet like the photo



② Check the connection with the MAIN PCB and the seat wire



③ Check the connection with SIDE IR harness

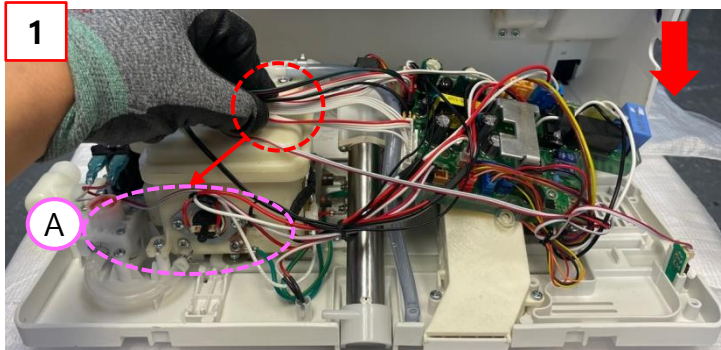
※ Applies only to 6000 Series

How to resolve heated seat malfunctioning

3-4. Close the cover base



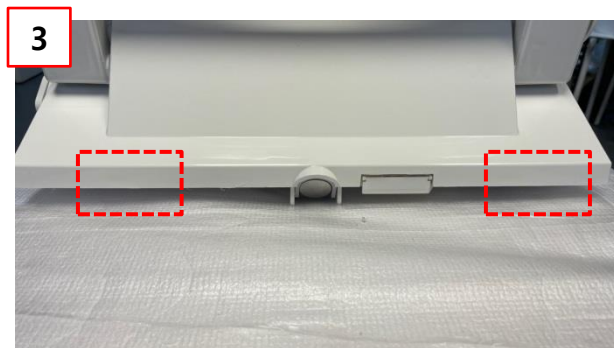
[Click for the Video Guide](#)



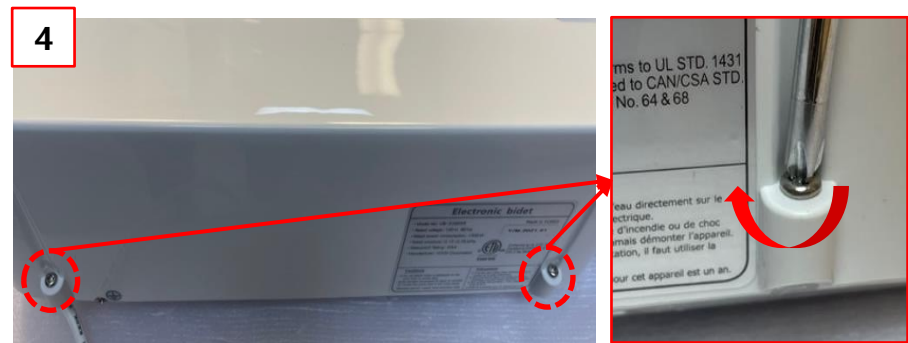
① Put the harness linked with the seat on the A side and close the cover base



② Push the unit towards the direction shown in the photo



③ Check whether the cover base is assembled perfectly. If you heard clicks, it's perfectly done.



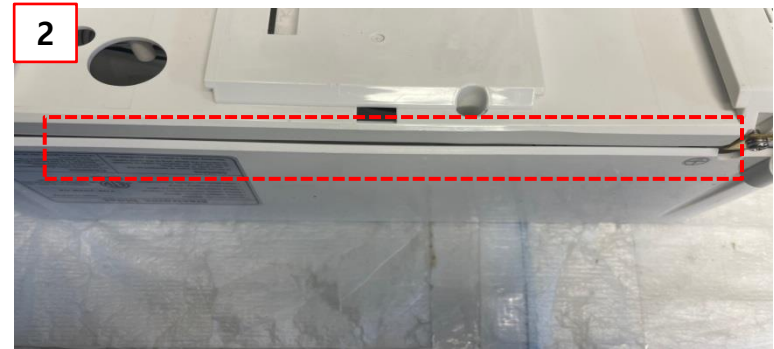
④ Screw the 2 screws back using a Phillips head driver.

How to resolve heated seat malfunctioning

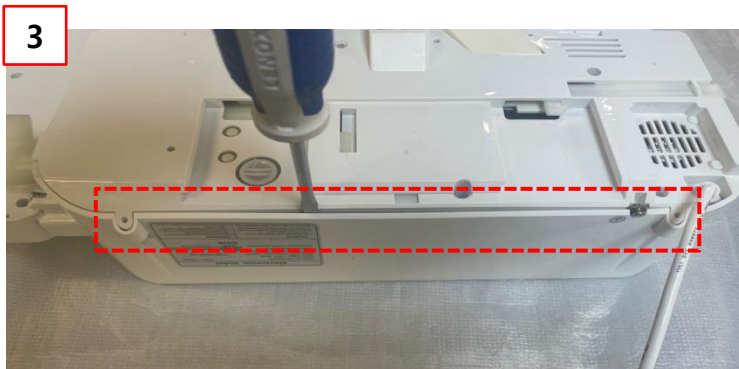
3-5. When you have difficulty closing the cover base



① Flip the bidet seat so you can see the under the bidet seat.



② Check if the base goes inside the cover base



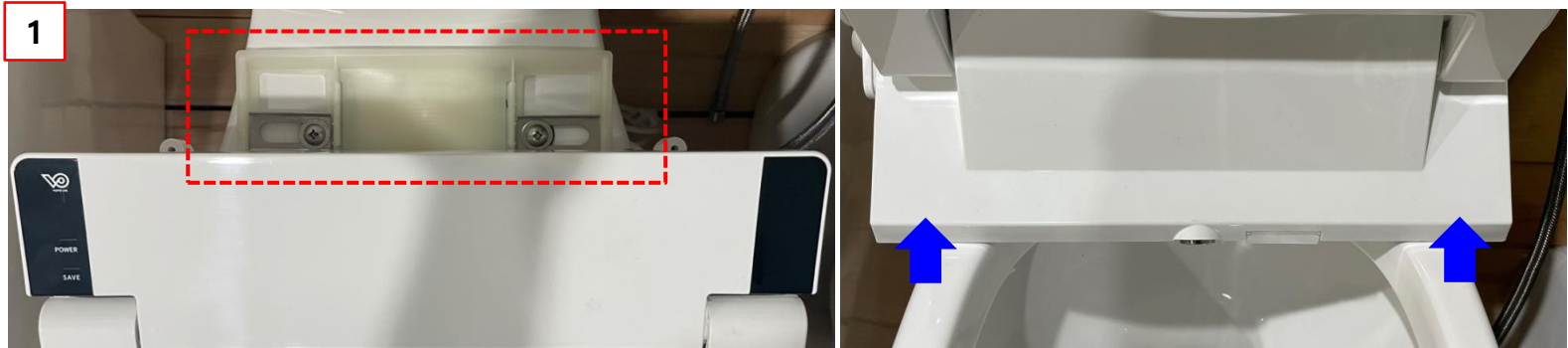
③ If not, please use a flat driver to make sure that the base goes inside the cover base.



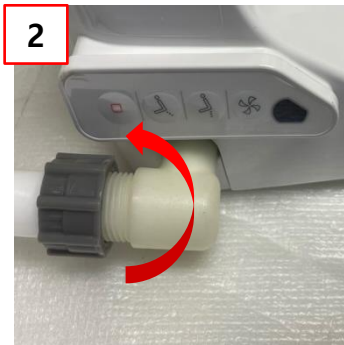
④ Push the unit towards the direction shown in the photo

How to resolve heated seat malfunctioning

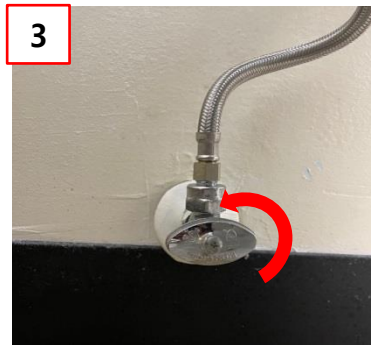
3-6. Attach the bidet seat



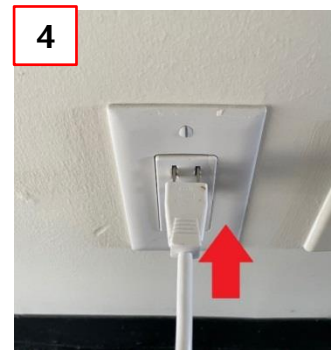
① Slide the bidet seat to the installed base bracket



② Connect the hose



③ Open the water valve



④ Plug the unit back