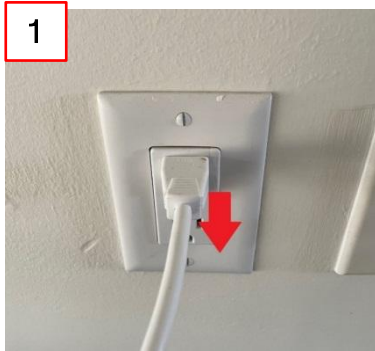
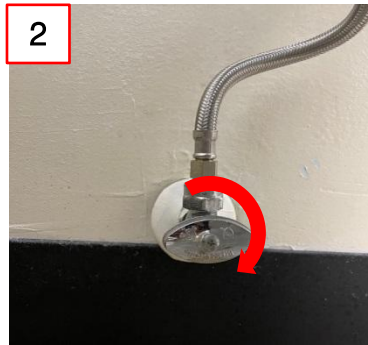


Bidet Toilet Seat Malfunctioning

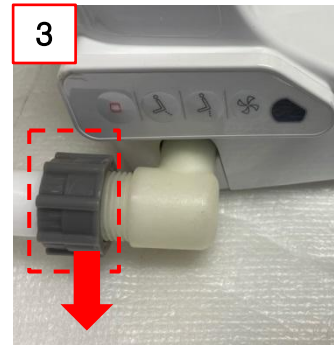
1. Separate the bidet part



① Unplug the power cord



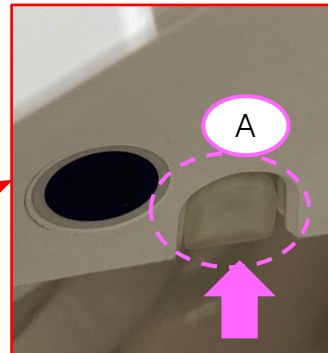
② Close the water valve.



③ Turn the hose to the right and separate it



④ Press A on the right side of the bidet and pull the bidet apart in the B direction.

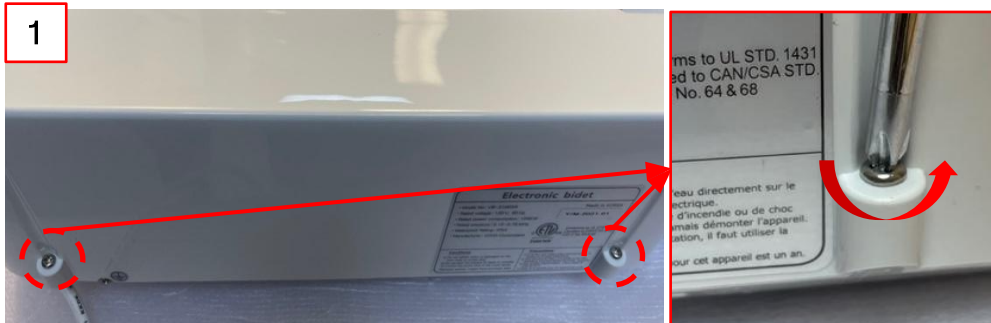


Scan here
for video guide

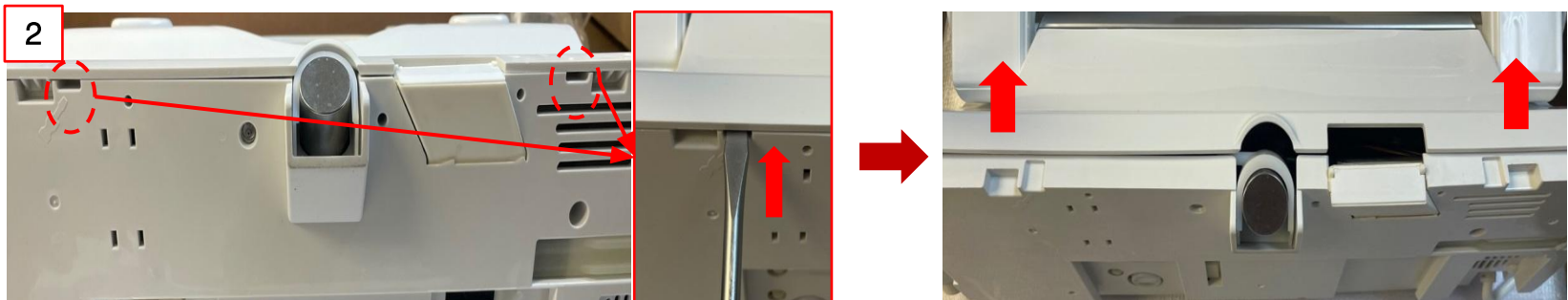


Bidet Toilet Seat Malfunctioning

2. Open the cover base



① Remove two screws at the back of the bidet



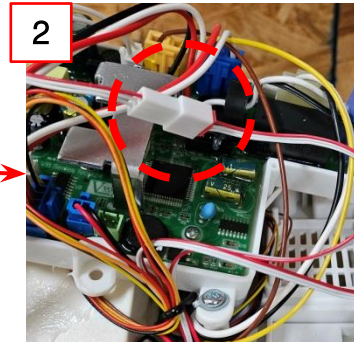
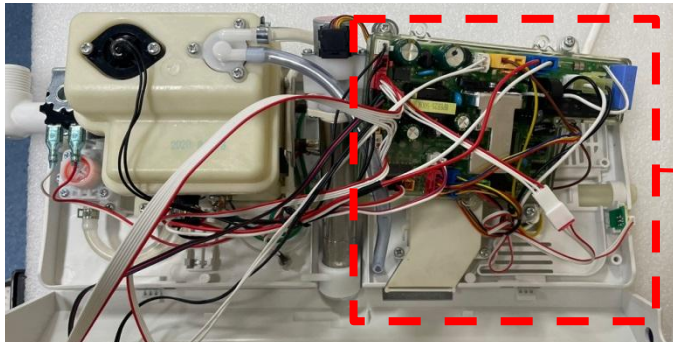
② Put the flat driver in the circle areas and lift it up to remove the cover base.

Bidet Toilet Seat Malfunctioning

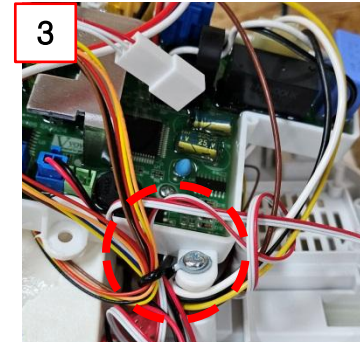
3. Disconnect SIDE IR



① Place the bidet like above



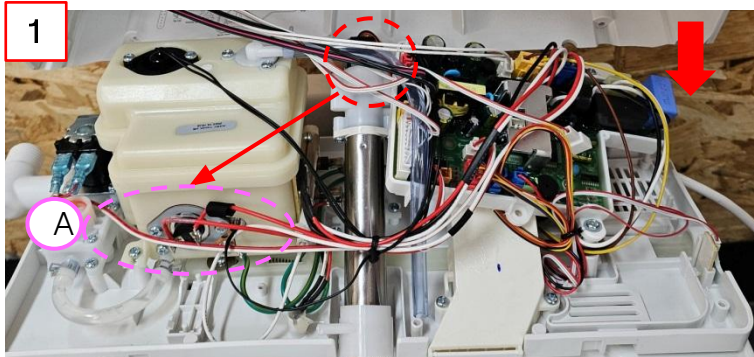
② Disconnect the SIDE IR connector



③ Tie the SIDE IR Harness

Bidet Toilet Seat Malfunctioning

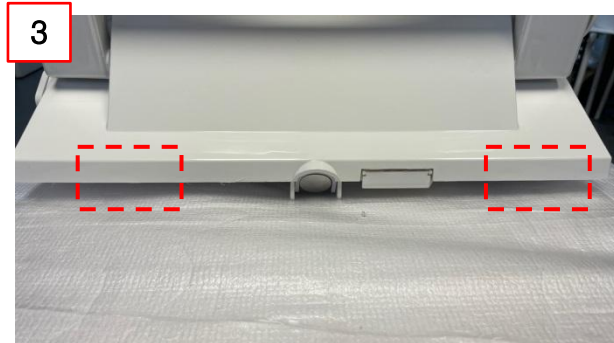
4. Close the cover base 커버베이스 클로즈



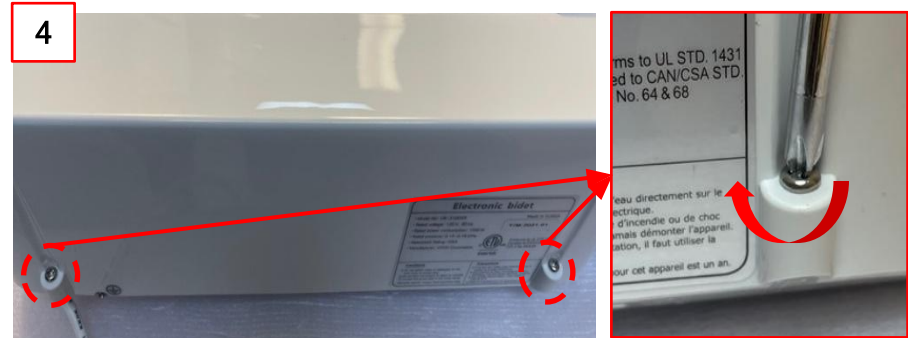
① Close the cover base while moving the circled harnesses to the A space



② Press the circle areas to close it



③ Make sure its closed



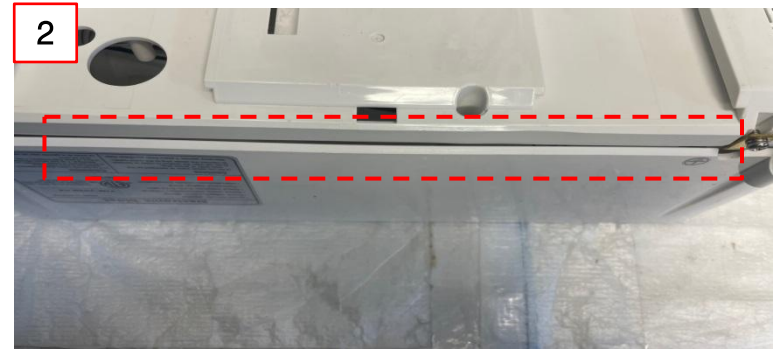
④ Screw the two screws at the back of the bidet

Bidet Toilet Seat Malfunctioning

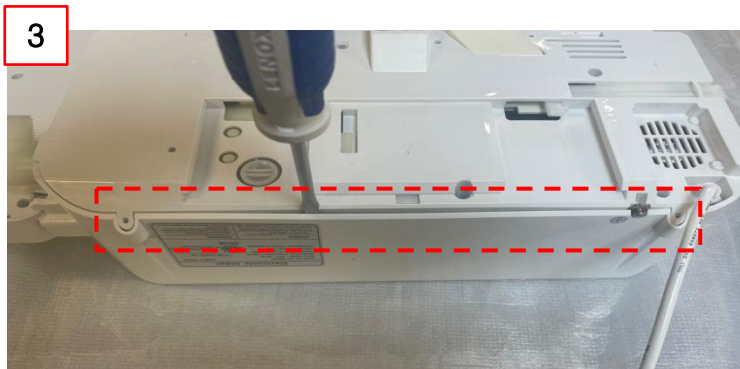
5. If cover base is not closed



① Flip the bidet



② Check the back of the bidet part is closed or not



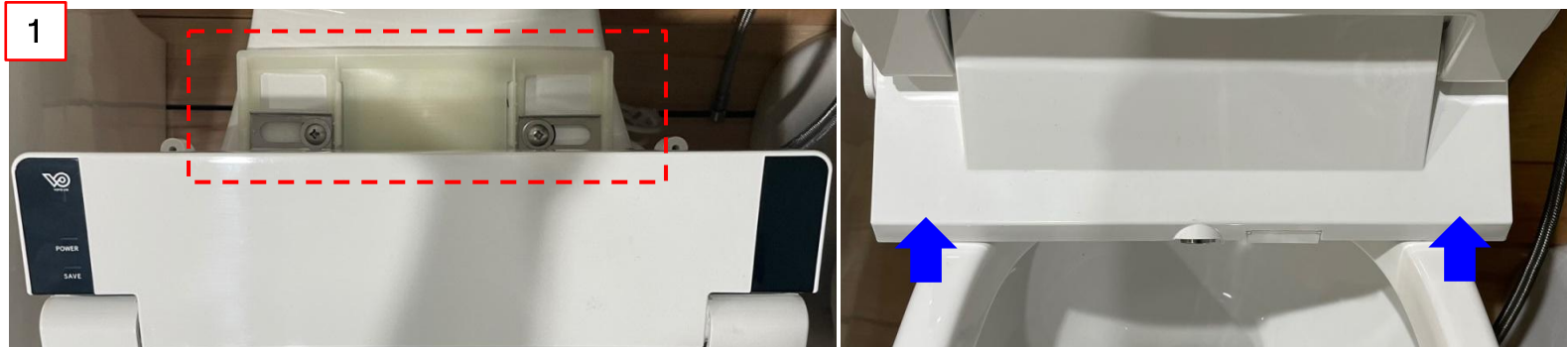
③ Insert the flat driver between the squares to create a space.



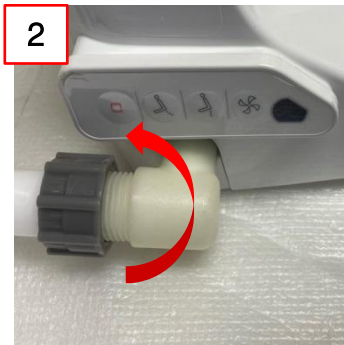
④ Press the circle areas to close it

Bidet Toilet Seat Malfunctioning

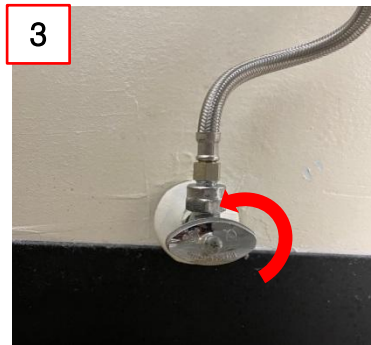
6. Install the bidet



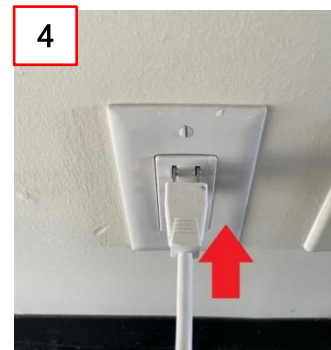
① Slide the bidet on the catchplate



② Turn the hose to the left



③ Open the water valve



④ Plug the power cord