

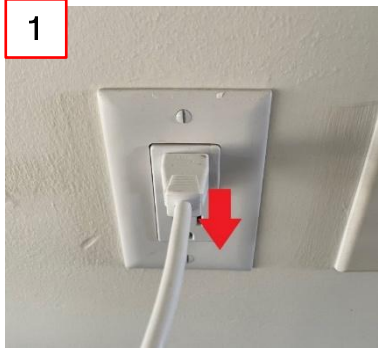
3. Leakage from the back and side of the cover base

UPC Flushing ONLY

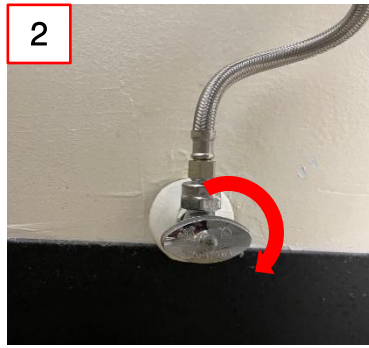
! If this fixing process is not workable, please contact our customer service so that we can provide a replacement unit with prepaid return label.

Auto open/close – Seat cover open and close by itself

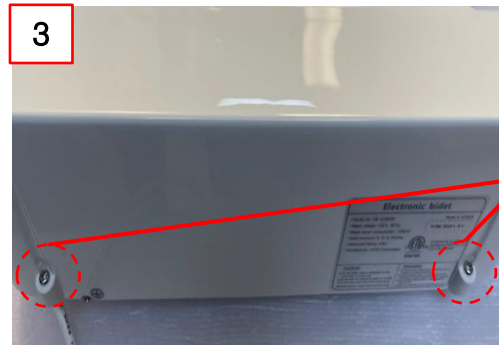
1. Open the cover base



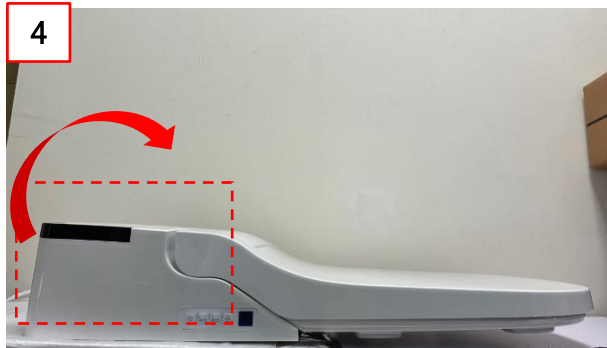
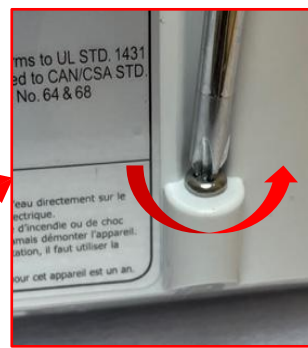
① Unplug the cord



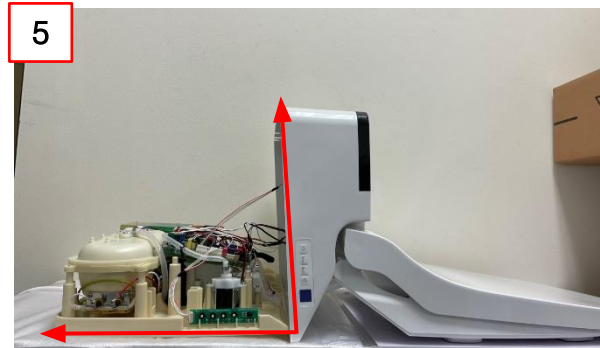
② Close the water valve clockwise



③ Unscrew the 2 screws at the back using a Philips head driver.



④ Detach the cover base by pulling it to the arrow direction as above.



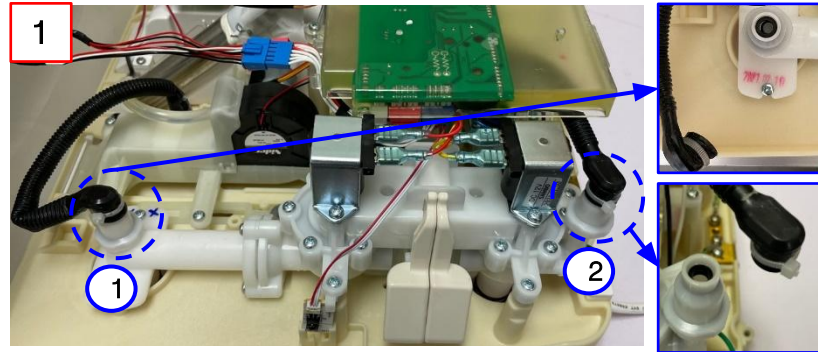
⑤ Make sure that the degree between the ground and the cover base is shown as in the above picture to avoid any wire damage.



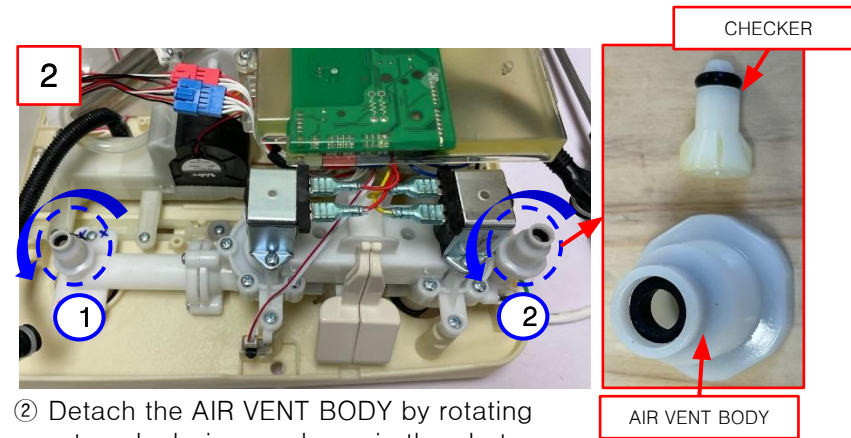
[Click for the Video Guide](#)

Leaking from the backside of the cover base

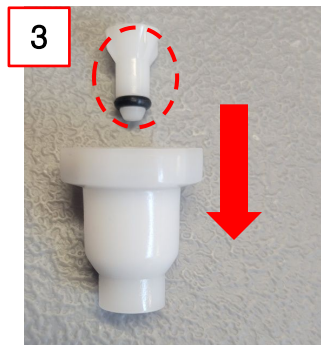
2. Block the AIR VENT



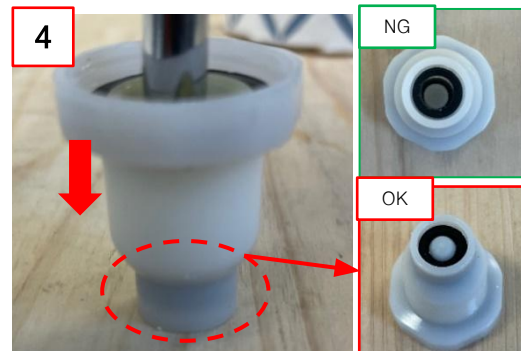
① Detach the black hoses 1 and 2 as above



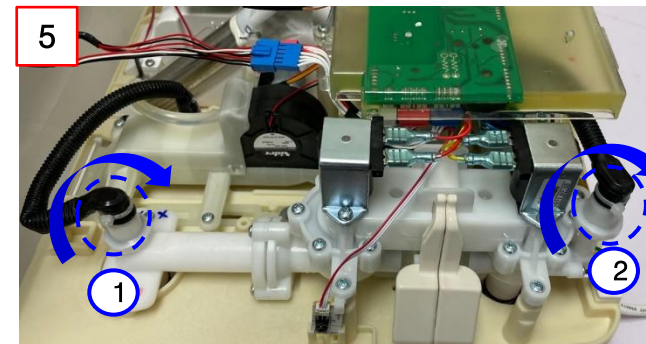
② Detach the AIR VENT BODY by rotating counter-clockwise as shown in the photo.



③ Put the CHECKER in the AIR VENT BODY as shown above



④ Put the BODY on a sturdy surface and push the CHECKER down using a Phillips head driver until you feel a click



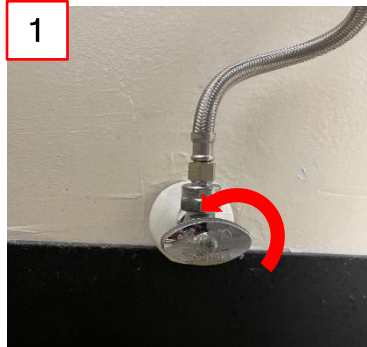
⑤ Attach the AIR VENT BODY by clockwise as shown above



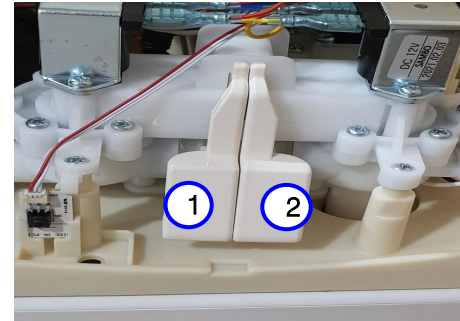
[Click for the Video Guide](#)

Leaking from the backside of the cover base

3. Turn on and check the leaking while the cover base is opened



① Fully open the water valve in counterclockwise.
If the supply water pressure is too high, it may cause malfunction. Please check the supply water pressure and adjust the valve just enough to flush. You may need a try and error.



② check the leaking while the cover base is opened
Press the button 1 for 5 seconds and see if there is any leaking.
Press the button 2 for 6 seconds and see if there is any leaking and if it flushes all the residual water in the bowl.



Please test the function again at this stage. If it flushes, and there's no leaking anymore, please move to the next step.

If the problem is not resolved, please contact our customer support team so that we can provide a replacement unit with a prepaid return label.

Leaking from the backside of the cover base

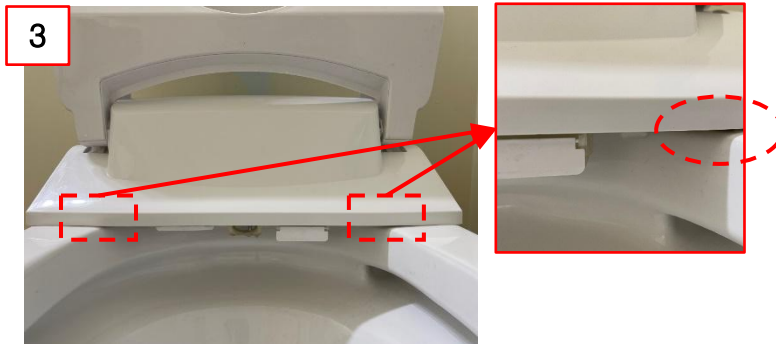
4. Close the cover base



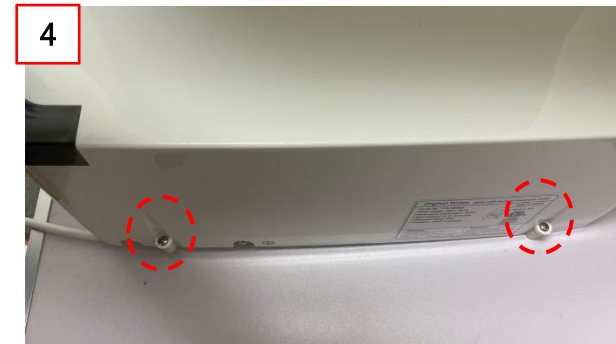
① Close the cover base in the arrow direction as above.



② Push down using your palms as above to hear clicks.



③ Check whether the cover base is assembled perfectly. If you heard clicks, it's perfectly done.



④ Screw the 2 screws back using a Phillips head driver.