

How to remove water pressure reducer guide

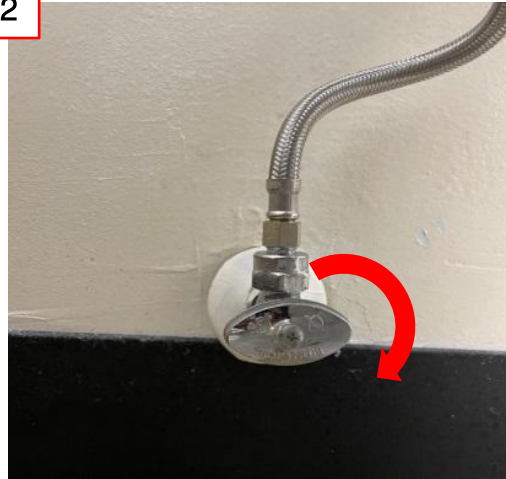
1-1. Disassemble the bidet part

1



① Unplug the power cord

2



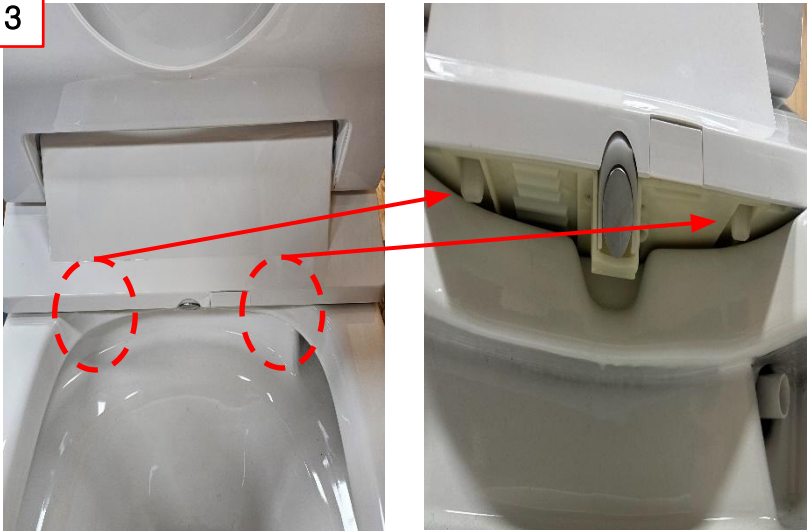
② Close the water valve and press the manual Flush button to remove the pressure in the unit.



How to remove water pressure reducer guide

1-2. Disassemble the bidet part

3



③ Pull both latches under the bidet and pull up the bidet part.

4



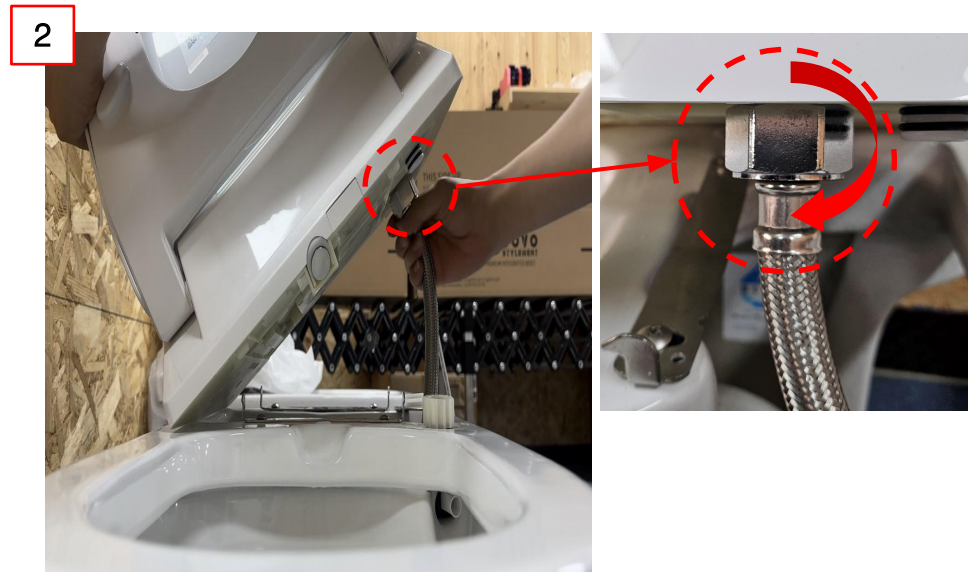
④ Pull up the bidet part to separate the bidet from the ceramic.

How to remove water pressure reducer guide

2-1. Disconnect the hose



① Hold the bidet part diagonally.



② Turn the nut counterclockwise to untighten.

How to remove water pressure reducer guide

2-2. Remove hose

3



③ Pull the hose down to disconnect.

4



④ After disconnecting the hose, do not place the product as above as water can flow inside the unit.

How to remove water pressure reducer guide

3-1. Remove water pressure reducer

1

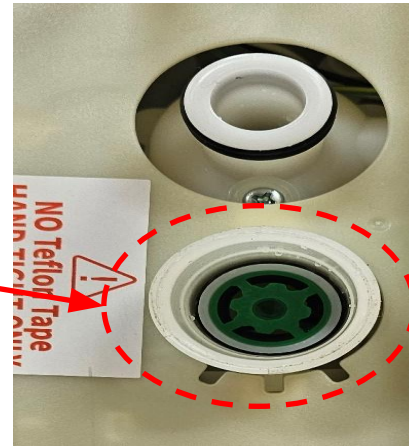
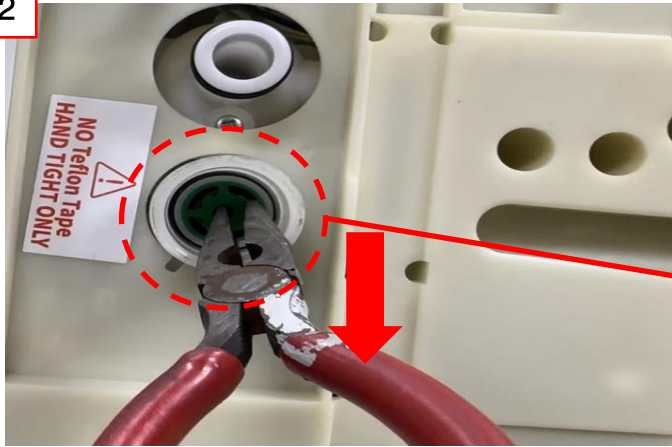


① Hold the product carefully so that it does not fall off.

How to remove water pressure reducer guide

3-2. Remove water pressure reducer

2

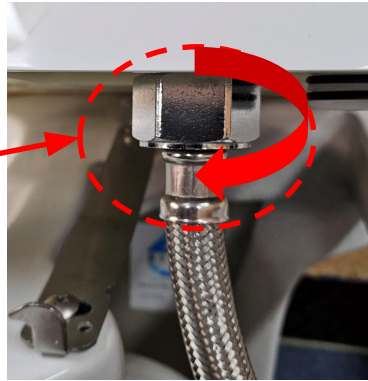


② Using a tool, pull out the reducer.

How to remove water pressure reducer guide

4. Connect the hose

1



① Push in to connect the flexible hose, and turn clockwise to tighten it.

How to remove water pressure reducer guide

5-1. Attach the bidet

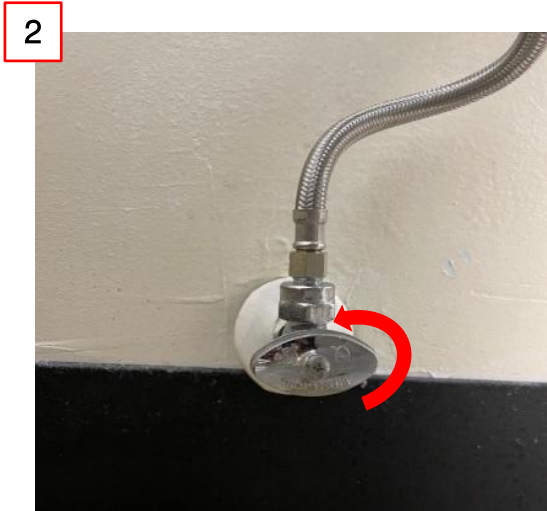
1



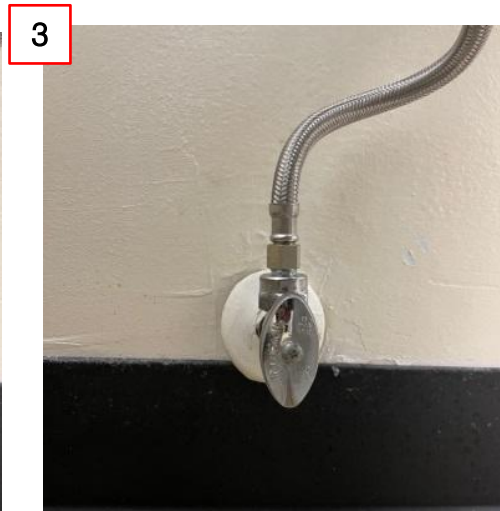
① Align two holes at the base and push down hard to hear clicks. Make sure the cord is stretched out to the back.

How to remove water pressure reducer guide

5-2. Attach the bidet



② Open the water valve



③ Open 100%



④ Plug in, and is ready to use.