

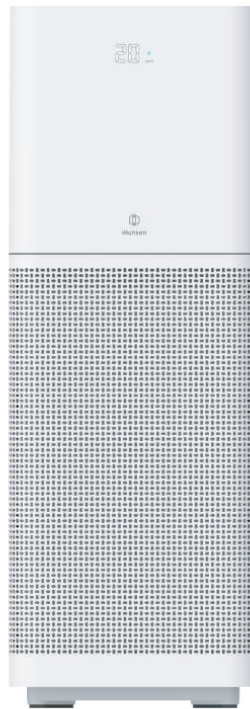
Please register your product at
www.vovo-us.com to receive full warranty benefit.



ENGLISH
FRENCH
SPANISH
GERMAN
ITALIAN



IMUNSEN AIR PURIFIER



Imunsen Air Purifier User Manual

Dear Customers

Thank you for purchasing Imunsen Air Purifier.

Please read carefully through the user manual for safe and proper use.

This manual also contains details of the warranty.

After reading through the manual, please write down the date and location of your purchase, as well as the copy of the invoice. Please keep the manual in an easily accessible place.

Table of Contents

Cautions

Cautions	03
----------	----

Product Introduction

Package Contents	04
Accessory Part Names	05

User Guide

Connecting the Purifier	06
Cypress Oil Capsule Usage	08
Placing the Purifier	13
Functionality	14

Maintenance

Cleaning Filter and Filter Storage	21
Cypress Wood Filter	22
Cleaning Dust Sensor	23
Warranty Period	24

Specifications

Product Functions	25
FAQ	26
Warranty	28

Cautions

Cautions

Transportation

When transporting the product, please make sure the device is turned off and unplugged.

Installation

Insert the filter storage lid properly before usage.
Make sure the purifier inlet surface is at least 20cm(4 inches) away from the wall.

Power Caution

Severe pressure or bending the power cord could cause damage.
Do not pull the power cord with pressure when plugging.
Do not use inadequate or non-certified power adaptors.
Do not temporarily replace the power cord with inadequate or non-certified power adaptors.

Power Cord

User must hold the head of the power cord when connecting.
When transporting or cleaning the device, please make sure to turn the power off and unplug the product beforehand.

In Usage

Immediately stop the purifier if it releases unusual odor and irregular wind, or if it behaves oddly.
Do not cover the air inlet area with obstacles or finger.
Please make sure to constantly open the window when used with a heating device to prevent carbon monoxide poisoning.

Regulations

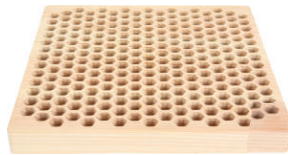
Do not use the purifier in humid locations such as bathrooms.

Product Introduction

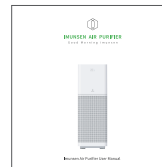
Package Contents



Air Purifier (1)



Cypress Wood Filter (1)



User Manual,
Warranty (1)



Circular Filter (1)

EU



or

UK



Power Cord (1)



Diffuser,
Detaching Hook
(Option)

Product Introduction

Air Quality LED Display



Air Inlet (3 Sides)

Additional Air Inlet

Front

Humidity Sensor

PM 2.5 Dust Sensor



Filter Storage Cover

Power Port

Base

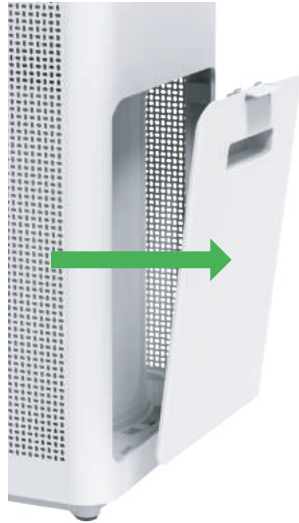
Back

User Guide

Connecting the Purifier



Please scan here to purchase the True H13 HEPA filter.



1. Open the filter cover situated at the back of the product.



3. Please remove the vinyl that covered



2. Pull out the filter that is fixed by the force of the spring

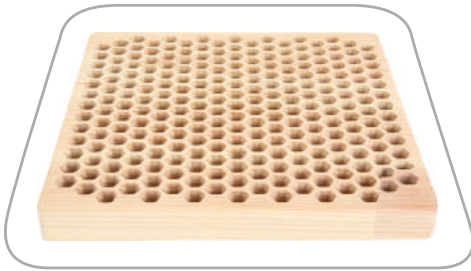


4. Put the filter back to the product properly.

User Guide

Connecting the Purifier

5. Please remove the above vinyl that covered the cypress wood filter.



6. Please connect the power cable to the back of the product properly.



※ Caution

Do not touch with wet hands.

User Guide

Cypress Oil Capsule Usage (Optional)

Cypress Oil Capsule(Cypress Essential Oil)

Material: 100% Pure Cypress Essential Oil (100% Extracted from cypress wood, Chemical-free)

Method of Extraction: Steam Distillation Method

Country of Origin: South Korea

ENGLISH



Please scan here to purchase the oil diffuser pod.



1. Use the hook accessory to remove the cypress wood filter.

※ The purifier does not operate when the filter cover is open, so please properly attach the filter to its location before turning on the device.

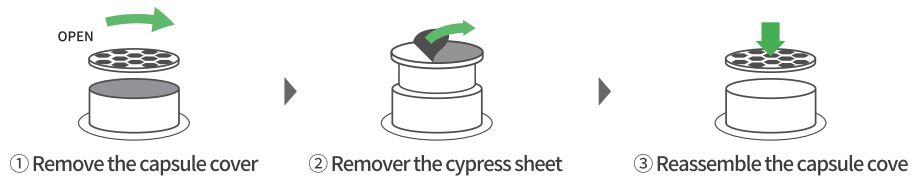


2. Remove the safety net with a screwdriver.



3. Remove the capsule cover from the blower fan case, then peel the protective film.

※ Do not poke the protective film with sharp tools as the capsule contains cypress oil.



4. Reassemble the cypress wood filter. The purifier is ready to be used.

Guide d'utilisation

Utilisation de la Capsule d'huile de cyprès (en option)

Capsule d'huile de cyprès (huile essentielle de cyprès)

Matériau : Huile essentielle de cyprès pure à 100 % (extraite à 100 % de bois de cyprès. Sans produits chimiques)

Méthode d'extraction : Méthode de distillation à la vapeur

Pays d'origine : Corée du Sud

FRENCH



Veillez numériser
ici pour acheter la
dosette de diffuseur
d'huile.



1. Utilisez l'accessoire crochet pour retirer le filtre en bois de cyprès.

※ Le purificateur ne fonctionne pas lorsque le couvercle du filtre est ouvert, veuillez donc fixer correctement le filtre à son emplacement avant d'allumer l'appareil.



2. Retirez le filet de sécurité à l'aide d'un tournevis.



3. Retirez le couvercle de la capsule du boîtier du ventilateur, puis retirez le film de protection.

※ Ne pas percer le film protecteur avec des outils pointus car la capsule contient de l'huile de cyprès.



4. Montez le filtre en bois de cyprès. L'épurateur est prêt à être utilisé.

Guía del usuario

Uso de la cápsula de aceite de ciprés (opción)

Cápsula de aceite de ciprés (aceite esencial de ciprés)

Material: Aceite esencial de ciprés puro 100 % (100 % extraído de madera de ciprés. Sin productos químicos)

Método de extracción: Destilación a vapor

País de origen: Corea del Sur

SPANISH



Escanee aquí
para comprar
la cápsula difusora
de aceite.



1. Utilice el accesorio del gancho para extraer el filtro de madera de ciprés.

※ El purificador no funciona cuando la tapa del filtro está abierta, por lo que le rogamos que fije correctamente el filtro en su lugar antes de encender el dispositivo.

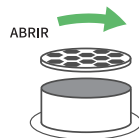


2. Retire la malla de seguridad con un destornillador.



3. Retire la cubierta de la cápsula de la carcasa del ventilador y, a continuación, retire la película protectora.

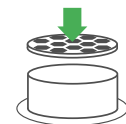
※ No perforo la película protectora con herramientas afiladas ya que la cápsula contiene aceite de ciprés.



① Retirar la cubierta de la cápsula



② Retirar la película protectora



③ Volver a colocar la tapa de la cápsula



4. Vuelva a montar el filtro de madera de ciprés. El purificador está listo para ser utilizado.

Benutzerhandbuch

GERMAN



Bitte scannen
Sie hier, um den
Öldiffusor zu kaufen.

Verwendung von Zypressenölkapseln (optional)

Zypressenöl-Kapsel (Ätherisches Zypressenöl)

Material: 100 % reines ätherisches Zypressenöl (100 % aus Zypressenholz extrahiert, frei von Chemikalien)

Extraktionsverfahren: Dampfdestillationsverfahren

Herkunftsland: Südkorea



1. Verwenden Sie das Hakenzubehör, um den Zypressenholzfilter zu entfernen.

※ Der Luftreiniger funktioniert nicht, wenn die Filterabdeckung geöffnet ist, also bitte richtig Bringen Sie den Filter an seinem Platz an, bevor Sie das Gerät einschalten.



2. Entfernen Sie das Sicherheitsnetz mit einem Schraubendreher.



3. Entfernen Sie die Kapselabdeckung vom Lüftergehäuse und ziehen Sie dann die Schutzfolie ab.

※ Stoßen Sie nicht mit scharfen Werkzeugen in den Schutzfilm, da die Kapsel Zypressenöl enthält.



4. Bauen Sie den Zypressenholzfilter wieder zusammen. Der Reiniger ist einsatzbereit.

Manuale Utente

Uso della Capsula di Olio di Cipresso (Opzionale)

Capsula di Olio di Cipresso (Olio Essenziale di Cipresso)

Materiale: 100% Puro Olio Essenziale di Cipresso (100% estratto da legno di cipresso, privo di sostanze chimiche)

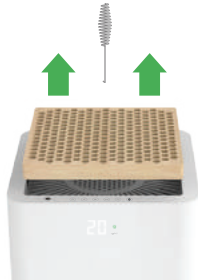
Metodo di Estrazione: Distillazione a Vapore

Paese di Origine: Corea del Sud

ITALIAN



Si prega di eseguire la scansione qui per acquistare il baccello del diffusore dell'olio.



1. Utilizzare il gancio per rimuovere il filtro in legno di cipresso.
※ Il purificatore non funziona quando il coperchio del filtro è aperto, quindi installare il filtro nella posizione corretta prima di accendere il dispositivo.



2. Rimuovere la rete di sicurezza con un cacciavite.



3. Rimuovere il coperchio della capsula dalla custodia della ventola, quindi rimuovere la pellicola protettiva.

※ Non toccare la pellicola protettiva con strumenti affilati perché la capsula contiene olio di cipresso.



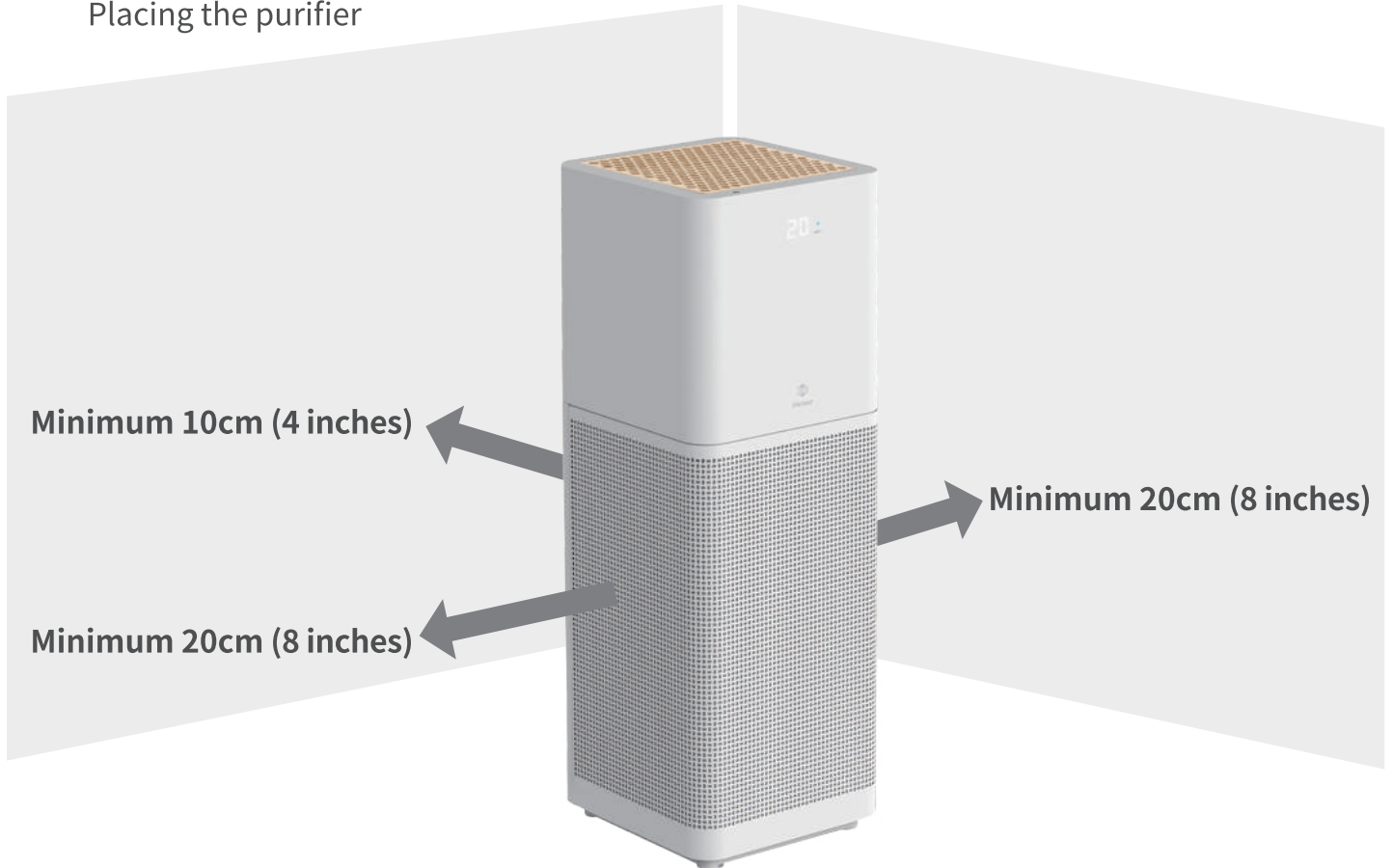
- ① Rimuovere il coperchio della capsula
- ② Rimuovere il filtro in cipresso
- ③ Rimontare il coperchio della capsula



4. Rimontare il filtro in legno di cipresso. Il purificatore è pronto per essere utilizzato.

User Guide

Placing the purifier



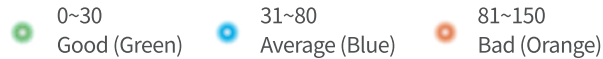
Maintain the above indicated against from other objects/walls when using the purifier.

To use the purifier to its full potential, please make sure it is placed at over 10cm (4 inches) away from the wall.

User Guide

Functionality

Air Quality Display in Numbers and Colors



Filter Leftover Reminder

When you turn on the power, the leftover time before filter replacement is shown on the screen.

※ Caution

After replacing the filter, turn off the power and push the Auto button and Cyclone button at the same time to reset the filter replacement time.

Additional Indicator








E2: Check whether the filter storage cover is properly placed.

User Guide

Functionality



Smart Functions

-  Ambient light sensor
-  Power
-  Auto
-  Wind level (3 levels)
-  Sleep mode
-  Cyclone
-  Power Save

User Guide

Functionality



Power

Turning on and off the power.

Night mode and power save mode recommended for night usage.



Auto

Operates automatically depending on the air quality.

Automatically changes function levels according to the air quality, thanks to the 2.5pm dust sensor situated at the back of the purifier.



Wind power (3 levels)

Operates when manually set.

Operates under 3 different modes (low-moderate-strong) set by the user.



Sleep mode.

Operated automatically during night time.

The fans speed automatically reduces, making less noise and using minimum energy.



Cyclone

Purify the air efficiently with full power.

Most efficient when used while cleaning, after ventilating, or after cooking.

* Automatically transits to auto mode after 20 minutes of operating under cyclone mode.



Power Save

Converts to the power save mode.

The wind speed decreases to reduce the power usage.



Ambient light sensor

Automatically changes mode based on the brightness of the room.

Automatically operates the night mode when in dark areas, and returns to auto mode once the area brightens up.



01. Pre-Filter

Removes larger obstacles such as hair, pollen, pet fur and dander.



02. H13 True HEPA Filter

H13 True HEPA Filter removes 99.97% of fine dust.



03. Deodorization filter

Eliminates VOC caused by daily movement, harmful gases, and pet odors.



04. Wood Cypress Filter

Natural antibacterial effect, neutralization and deodorant effect, insect repellent and bactericidal effect, stress reduction and aromatherapy.

Fonctionnalité



Alimentation

Mise en marche et arrêt.

Le mode nuit et le mode économie d'énergie sont recommandés pour une utilisation nocturne.



Auto

Fonctionne automatiquement en fonction de la qualité de l'air.

Change automatiquement de mode de fonctionnement en fonction de la qualité de l'air, grâce au capteur de poussière 2.5pm situé à l'arrière du purificateur.



Puissance du ventilateur (3 niveaux)

Fonctionnement en mode manuel.

Fonctionne sous 3 modes différents (faible-moyen-fort) choisis par l'utilisateur.



Mode sommeil.

Fonctionnement automatique pendant la nuit.

La vitesse des ventilateurs se réduit automatiquement, ce qui permet de faire moins de bruit et de consommer moins d'énergie.



Cyclone

Purifie efficacement l'air à pleine puissance.

Plus efficace lorsqu'il est utilisé pendant le nettoyage, après avoir aéré ou après avoir cuisiné.

* Passe automatiquement en mode automatique après 20 minutes de fonctionnement en mode cyclone.



Économie d'énergie

Passe en mode d'économie d'énergie.

La vitesse du ventilateur diminue pour réduire la consommation d'énergie.



Capteur de lumière ambiante

Change automatiquement de mode en fonction de la luminosité de la pièce.

Active automatiquement le mode nuit dans les zones sombres et revient en mode automatique lorsque la zone s'éclaircit.



01. Pré-filtre

Retient les plus gros éléments tels que les cheveux, le pollen, les poils d'animaux et les squames.



02. Filtre H13 True HEPA

Le filtre H13 True HE PA élimine 99,97 % des particules fines.



03. Filtre de désodorisation

Élimine les COV causés par les mouvements quotidiens, les gaz nocifs et les odeurs de pct.



04. Filtre Wood Cypress

Effet antibactérien naturel, effet neutralisant et désodorisant, effet répulsif sur les insectes et effet bactéricide.

Réduction du stress et aromathérapie.

Funcionamiento



Power

Encender y apagar el equipo.

Se recomienda el modo nocturno y el modo de ahorro de energía si se utiliza por la noche.



Automático

Funciona automáticamente en función de la calidad del aire.

Cambia automáticamente los niveles de funcionamiento en función de la calidad del aire, gracias al sensor de polvo de 2,5µm situado en la parte trasera del purificador.



Potencia del ventilador (3 niveles)

Se tiene que ajustar manualmente.

Funciona con 3 modos diferentes (bajo-medio-alto) configurados por el usuario.



Modo reposo.

Funciona automáticamente por la noche.

La velocidad de los ventiladores se reduce automáticamente, haciendo menos ruido y utilizando menos energía.



Modo Ciclón

Purifica el aire de forma eficiente con toda su potencia.

Es más eficiente cuando se utiliza mientras se limpia, después de ventilar o después de cocinar.

* Cambia automáticamente al modo Auto tras 20 minutos de funcionamiento en modo ciclón.



Ahorro de energía

Cambia al modo de ahorro de energía.

La velocidad del aire disminuye para reducir el uso de energía.



Sensor de luz ambiente

Cambia automáticamente de modo en función de la luz de la habitación.

Activa automáticamente el modo nocturno cuando se encuentra en zonas sin luz, y vuelve al modo automático una vez que la zona se ilumina.



01. Prefiltro

Elimina los elementos más grandes como el pelo, el polen, la piel de las mascotas y la caspa.



02. Filtro H13 True HEPA

El filtro H1J True HE PA elimina el 99,97% del polvo más fino.



03. Filtro de desodorización

Elimina los COV causados por el tránsito diario, los gases nocivos y los olores pct.



04. Filtro de madera de ciprés

Efecto antibacteriano natural, efecto neutralizador y desodorante, efecto repelente de insectos y bactericida. Disminución del estrés y aromaterapia.

Funktionalität



Strom

Das Ein- und Ausschalten der Stromversorgung.
Nachtmodus und Stromsparmodus empfohlen für die Nachtnutzung.



Auto

Funktioniert automatisch je nach Luftqualität.
Ändert die Funktionslevels automatisch je nach Luftqualität,
dank des 2.5pm Staubsensors, der sich hinter dem Reiniger befindet.



Windstärke (3 Levels)

Funktioniert bei manueller Einstellung.
Funktioniert unter 3 verschiedenen Modi (schwach-mäßig-stark) die vom Benutzer eingestellt werden können.



Schlaf Modus

Funktioniert automatisch in der Nacht.
Die Luftgeschwindigkeit reduziert sich automatisch, macht weniger Lärm und verbraucht minimale Energie.



Zyklon

Luft mit voller Energie, effektiv reinigen.
Am effizientesten beim Putzen, nach der Belüftung und nach dem Kochen.

* Wird nach 20 Minuten Zyklon Modus auf Auto Modus umgeschaltet.



Strom Sparen

Schaltet in den Stromsparmodus um.
Die Windstärke wird reduziert um Strom zu sparen



Umgebungslichtsensor

Wählt automatisch Modus aus, je nach Helligkeit des Raumes.
Schaltet automatisch auf Nacht Modus in dunklen Räumen und aktiviert Auto Modus sobald es wieder hell ist.



01. Vor-Filter

Entfernt große Hindernisse, wie z.B. Haare, Pollen, Haustierfell und Schuppen.



02. H13 True HEPA Filter

H13 True HEPA Filter entfernt 99.97% Feinstaub



03. Deodorierungsfiler

Eliminiert VOC, das durch tägliche Bewegungen schädliche Gase und Tieraromen erzeugt.



04. Holz Zypresse Filter

Natürlicher Anti-Bakterien Effekt, Neutralisierung und Deodorant Effekt, Insektenabscheuungs- und Bakterizid Effekt, Stressreduktion und Aromatherapie.

Funzioni



Pulsante di accensione

Accende e spegne il dispositivo.

Modalità notturna e modalità risparmio energetico consigliate per l'utilizzo di notte.



Auto

Funziona automaticamente in base alla qualità dell'aria.

Cambia automaticamente l'intensità di funzionamento in base alla qualità dell'aria, grazie al sensore per le polveri pm2.5 situato sul retro del depuratore.



Intensità dell'aria (3 livelli)

Funziona se impostata manualmente.

Funziona su 3 livelli (bassa-moderata-forte) impostati dall'utente.



Modalità Sonno.

Si attiva automaticamente durante la notte.

La velocità delle ventole si riduce automaticamente, facendo meno rumore e utilizzando poca energia.



Ciclone

Purifica l'aria in modo efficiente e alla massima potenza.

È più efficiente se usato durante la pulizia di una stanza, dopo aver arieggiato gli ambienti o dopo aver cucinato.

* Passa automaticamente in modalità automatica dopo 20 minuti di funzionamento in modalità ciclone



Risparmio Energetico

Passa alla modalità risparmio energetico.

L'intensità dell'aria diminuisce per ridurre il consumo di energia.



Sensore di luce ambientale

Cambia automaticamente la modalità in base alla luminosità della stanza.

Avvia automaticamente la modalità notturna quando è buio, e torna alla modalità automatica quando la stanza viene illuminata



01. Pre-Filtro

Rimuove le particelle più grandi come capelli, pollini, peli di animali e lanugine.



02. Vero Filtro HEPAH13

Il Vero Filtro HEPAH13 rimuove il 99,97% delle polveri sottili.



03. Filtro di deodorazione

Elimina i composti organici volatili causati dagli spostamenti quotidiani, i gas nocivi e gli odori di animali domestici.



04. Filtro in Legno di Cipresso

Effetto antibatterico naturale, neutralizzante degli odori e deodorante, repellente per insetti e battericida; riduzione dello stress e aromaterapia.

Maintenance

Circular Filter and Cleaning the Filter Storage



If the device has been in usage for 400 hours, the device will automatically alarm to clean the filter storage. Please clean the filter storage when notified to maintain the product at good condition.

Circular Filter: please remove large dust using a vacuum on the pre-filter.

Warning: Please do not use water to clean the circular filter. Its functionality may decrease.



Please do not wash.
(Functionality may decrease when washed.)

※ Circular filter is recommended to be replaced every year.

Maintenance

Cypress Wood Filter



Following conditions are not defective and cannot be replaced.

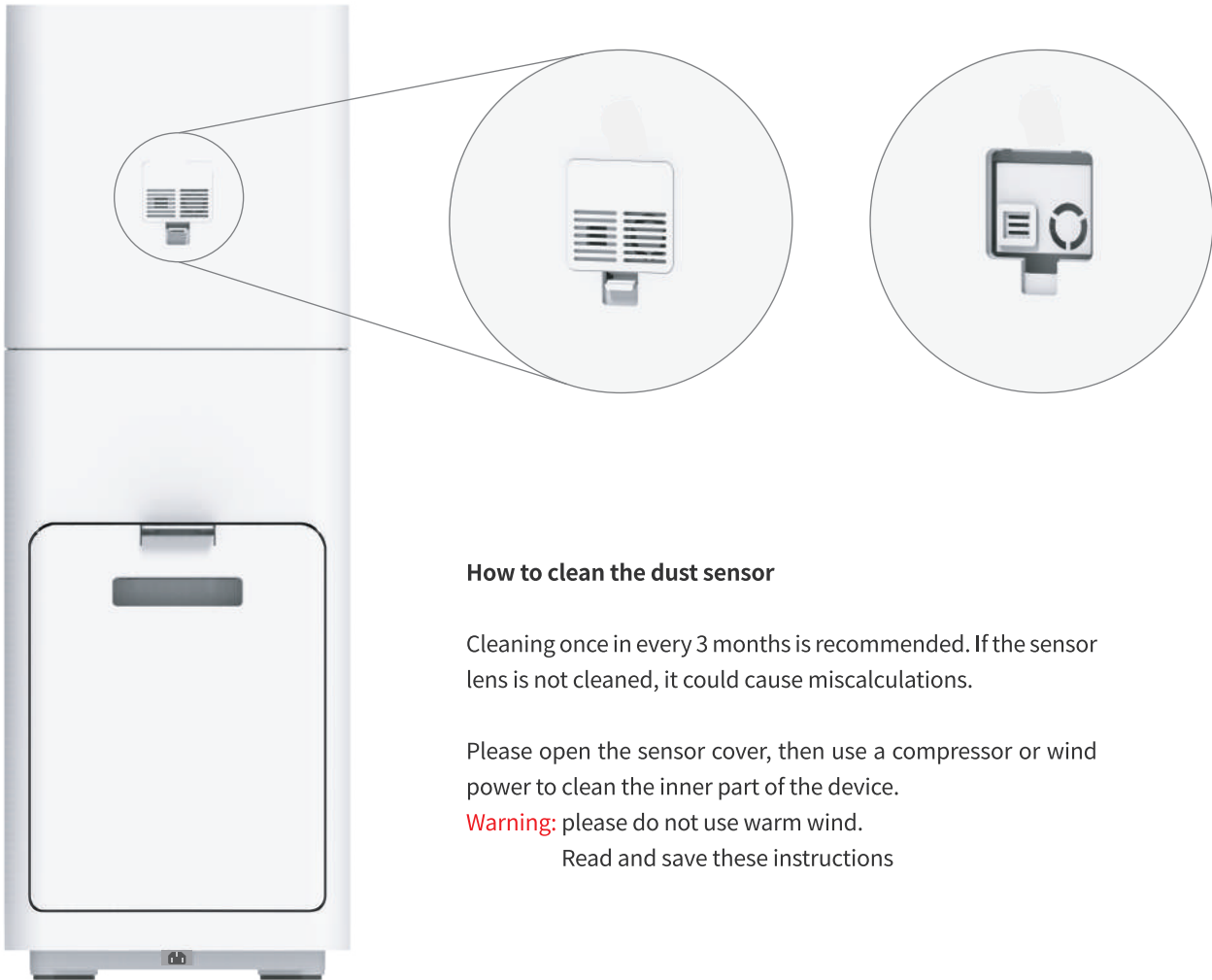
- Products made from tree wood may contain knots.
- The cypress wood filter might contain scratches or dents, but is not defected as is naturally caused during production.
- The wood color or pattern may be different to the image due to the nature of wood.
- Cypress wood naturally inhales water during summer and expand, as well as naturally exerts water to shrink.
Due to the above reason, the filter will naturally repeat contraction and expansion, then settle down.
- As time passes, the wood may change in size to about 5 mm, but is a natural occurrence.

- Wood may change color or shape when exposed to sunlight, thus recommended to use under shade.
- Please be cautious of usage in humid places, as the wood filter is very sensitive to humidity.
- Please do not place heavy items on top of the purifier.
- If the cypress wood filter is in contact with water, the product may contract or expand.

After a period of use, even if the scent is minimal, the effect of cypress wood remains.

Maintenance

Cleaning the Dust Sensor



How to clean the dust sensor

Cleaning once in every 3 months is recommended. If the sensor lens is not cleaned, it could cause miscalculations.

Please open the sensor cover, then use a compressor or wind power to clean the inner part of the device.

Warning: please do not use warm wind.

Read and save these instructions

Maintenance

Warranty Period

Warranty

2 year from date of purchase.

Non-warranty

1. Unauthorized repairs, misuse, collisions, inadvertent misuse, liquid inflows, modifications, disassembly, use of third party components, or destruction, or alternation of labels and device number anti counterfeiting markings.
2. After the warranty time is over.
3. Damage caused by misuse.

Help: For safe transportation of the purifier, please keep its original packaging for about a month from purchase. Details of the warranty is on page 28 of this manual.

Specifications

Product Functions



Product name M - 001W M - 001B
 M - 001DW M - 001DB

Size 10.2 x 10.2 x 28.3 Inches, 260x260x720mm

Usable area 640sq.ft, 59.5m²

Weight 19lb, 8kg (Filter Included)

Voltage 220~240V~, 50/60 Hz

Power 4W - 72W

Cable AC : 5.9ft, 1.8m

Color White / Black

Filter(Lifetime) Pre-Filter+H13 True HEPA Filter+Deodorization Carbon Filter
(1year)+Cypress Wood Filter(2years)

Certification KC, ETL, FCC, CE, RoHS,CB, PSE, GB

Diffuser Option

Country of Origin Korea

Specifications

FAQ

Problem	Pre-check	Solutions
·The power does not turn on.	· Is the power plug properly plugged in? · Is the indicator light turned on?	· Please give the device a minute after plugged in, before turning the power on. · Please connect the power plug and consent.
· Wind is not coming out. · The wind power has weakened. · The wind power does not change.	· Did you remove the vinyl cover from the filter before using? · Is the filter properly assembled? · Is the filter dirty?(The contamination of the filter can cause malfunction of the wind power) · Is the current mode set to night mode?	· There is a vinyl protective cover on the filter. Please remove it before using the purifier. · Please check if the filter is properly assembled. · Please clean the filter. · Please change the operation mode.
· The wind power automatically changes.	· Please check if the mode is under auto mode. (In AUTO mode, the wind power automatically changes based on the air quality)	· Please check the operation conditions of AUTO mode.
· The wind power is too strong.	· Is the device currently set in cyclone mode? (Cyclone mode operates at full capacity to clear the air during a short duration.)	· Please check conditions of cyclone mode.

Specifications

FAQ

Problem	Pre-check	Preventions and solutions
<ul style="list-style-type: none"> · The air produced by the purifier smells 	<ul style="list-style-type: none"> · Was the product in usage in areas where people smoked, or cooked food with high smell like meat? · Was the product brought from another place? 	<ul style="list-style-type: none"> · The filter inhales odor. Thus can emit that odor temporarily, but will eventually disappear. · The previous location's odor may still remain.
<ul style="list-style-type: none"> · Filter replacement period? 	<ul style="list-style-type: none"> · Hepa filter approx. 1 year, · Cypress wood filter approx. 2 years. 	<ul style="list-style-type: none"> · Please check the start date of the filter usage.
<ul style="list-style-type: none"> · The dust sensor is not operating under auto mode. 	<ul style="list-style-type: none"> · Is the sensor covered by a wall or an obstacle? · Did you clean the sensor? 	<ul style="list-style-type: none"> · Please check the placement guide for proper usage. (Page 13) · Please check maintenance guide for proper usage. (Page 23)
<ul style="list-style-type: none"> · The cypress filter lost its scent. 	<ul style="list-style-type: none"> · The filter will properly function for 2 years regardless of the filter losing scent. 	<ul style="list-style-type: none"> · Please purchase the cypress oil from our website and gently wipe the product for scented usage. · After a period of use, even if the scent is minimal, the effect of cypress wood remains.
<ul style="list-style-type: none"> · The filter shape has changed. 	<ul style="list-style-type: none"> · The filter is sensitive to humidity (water) 	<ul style="list-style-type: none"> · For further details, please refer to page 22.

IMUNSEN Air Purifier Warranty

Model	<input type="checkbox"/> M - 001W <input type="checkbox"/> M - 001DW <input type="checkbox"/> M - 001B <input type="checkbox"/> M - 001DB
Serial No.	
Date of Purchase	Year Month Day
Warranty Period	2 years from date of purchase
Customer Address	
Customer Name	
Phone Number	
Notes	

Warranty Content

1. Please visit the location of purchase if the product defects within the warranty period.
2. Even during the warranty period, repairs will be charged if:
 - If customer loses the warranty.
 - If the warranty does not correctly display purchase date, nor the copy of the invoice.
 - Defect caused by customer's fault.
 - Defect caused by natural disasters such as fire, gas, electricity defect and more.
 - Defect caused by misplacement or assembly.
 - Cost for engineer visit.
 - Cartridge, filter or accessory defect.
3. Please note that all parts removed for repair will be taken by our team.
4. This warranty will not be reissued.

Thank you for your understanding.

MEMO



MEMO



