



Bio Peptide Igf 1 Lr3 1mg | BIO-PEPTIDE IGF-1 LR3 (INSULIN) 1MG - Fit Light Med

IGF-1 LR3 BIO-PEPTIDE 1MG IGF-1 LR3 (Insulin-like growth factor) is an endocrine hormone that is produced in the liver. The production of IGF-1 LR3 is increased in the presence of growth hormone. There are many different types of cells in the body that are equipped with a receptor to accept IGF-1. Bio-Peptide Igf-1LR3 1mg IGF-1 can stimulate hyperplasia - the growth of new cells. Due to its high - the anabolic properties of IGF-1 won deservedly and rightly so great popularity especially among bodybuilders and athletes as an effective means of stimulating the growth of muscle mass and strength, and the conversion of fat into energy.

? CLICK HERE TO SHOP ONLINE: <https://t.co/4346mZTCna>

Bio-Peptide Igf-1LR3 1mg - EQUINE MEDCARE

IGF-1 LR3 1mg IGF-1 LR3 (insulin-like growth factor-1 long arginine 3) is a synthetic, modified construct of insulin-like growth factor-1. Because IGF-1 LR3 does not bind to IGF-1 binding proteins very well, it remains active up to 120 times longer than standard IGF-1. This results in improved half-life for the peptide and thus increased activity. IGF-1 LR3 1mg \$189.99 \$169.99 or 4 interest-free payments of \$42.50 with Peptide Nasal Spray and Peptide Injections mixing instructions and ratios will be provided via a link in your confirmation email. Benefits of IGF-1 LR3 Muscle growth and development Development of lean muscle mass Protection against muscle wasting It fights autoimmune diseases



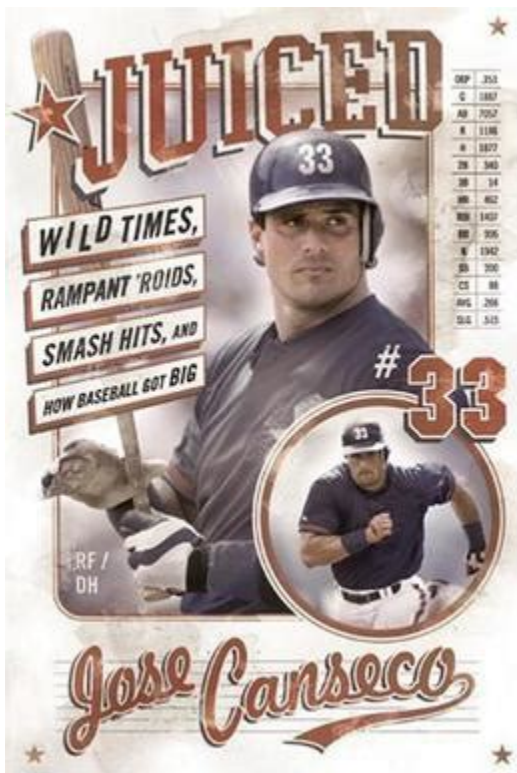
IGF-1 LR3 (1mg) - Buy Online - Biotech Peptides

IGF-1 LR3 Peptide - Longevity Research IGF-1 LR3 promotes tissue repair and upkeep of the body, making it a protective molecule against cellular damage and the effects of aging. Research in cows and pigs indicates that IGF1-LR3 administration can overcome the effects of aging, prolong life and reduce disability.



IGF-1 LR3 of Bio Peptide is a peptide of growth factor linked to insulin (Insulin Growth Factor 1). It will regulate fat cells in order to transform them into energy for better combustion. Its communication control action between the cells has an overall positive effect anti-aging, on protein synthesis and muscle growth for gains in the long term. [explanation](#)

IGF-1 LR3 - 1mg

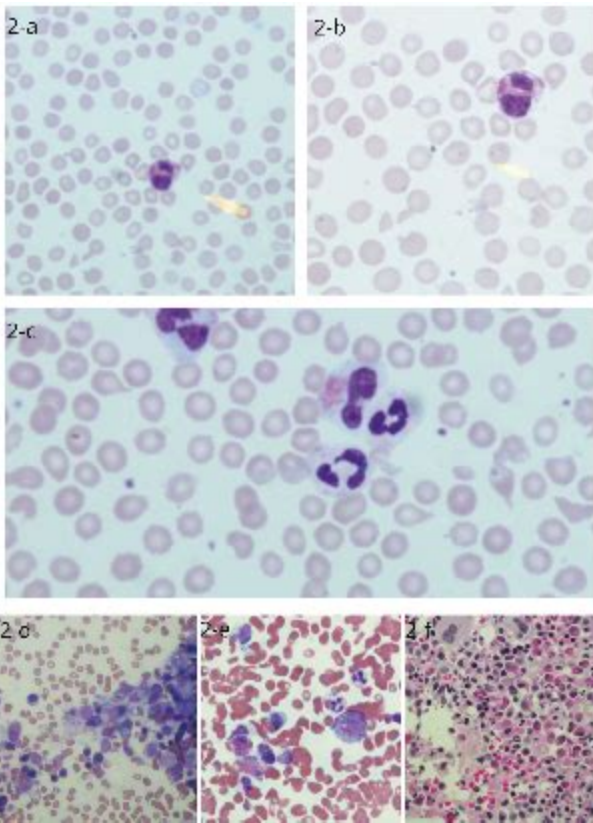


What you need to know about IGF-1 LR3 / DES If you want big muscle gains, you will find that learning about injecting peptide known as IGF-1 LR3 / DES is well worth your time. This peptide is enriched with a growth factor, IGF, having insulin-like properties. IGF has eighty-three amino acids and is highly doped in terms of its chemical structure.

IGF-1 LR3 - 1mg



Bio-Peptide IGF-1LR3 1mg allows for many of the growth-promoting effects of growth hormone insulin-like growth factors also known as IGF's. IGF-1 LR3 comprises a family of peptides (proteins) that play important roles in mammalian growth and development. IGF1 LR3 is also known as Long R3 IGF-1 or Insulin-Like Growth Factor-I Long Arg3. Bio-Peptide IGF-1LR3 1mg.



The IGF 1 LR3 peptide is a variant of insulin-like growth factor 1. It works by creating new muscle tissue, stabilizing blood sugar levels, and speeding up healing. Where to buy IGF 1 LR3 online? Here's where you can find IGF1 LR3 for sale. ACE-031 1mg \$ 175.00. FREE Shipping for orders over \$200 (USA Only) [home page](#)

Bio-Peptide Igf-1LR3 1mg is also known as Long R3 IGF-1 ...

- Buy IGF-1 LR3 1mg | 99% Purity (USA Made) | Peptide Sciences
- Buy IGF-1 LR3 1mg | USA Manufactured | 99% High Purity
- IGF-1 DES 1mg - Xtrem Pro Peptide