

moda  
summer  
sewing

## On-the-Go Travel Pillowcase - 18" x 13"

\*Fits a 16" x 12" travel pillow

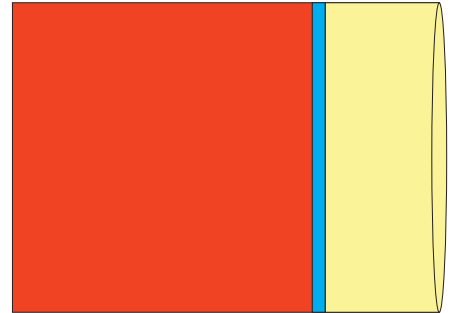
Make just one or make one for everyone (but the driver!) and keep a set of travel pillows in your car. This is a great project to embellish and personalize as desired.

### General Supplies:

- 50 wt Aurifil thread in matching or contrasting color
- Sewing machine needle--Schmetz Quilting needle-75/11
- Seam ripper (*just in case*)
- Seam tape to mark alignment line on sewing machine bed
- Wonder clips

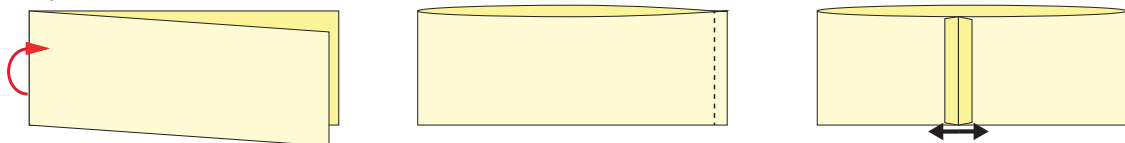
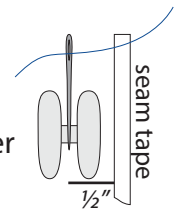
### Fabric Supplies: *Do NOT prewash fabrics!*

- ¼ yard of a print for pillow band  
Cut (1) 6" x 27" strip
- ⅛ yard of a solid for pillow piping  
Cut (1) 2" x 27" strip
- ½ yard of a print for pillow body  
Cut (1) 16½" x 27" strip



### Assembling the Travel Pillow: Use a ½" seam allowance

1. Place a strip seam tape on the sewing machine bed ½" to the right of the needle center to use as a guide line for sewing the ½" seam.
2. With right sides together, sew the two ends of the 6" x 27" pillow band together to make a loop. Press the seam open.

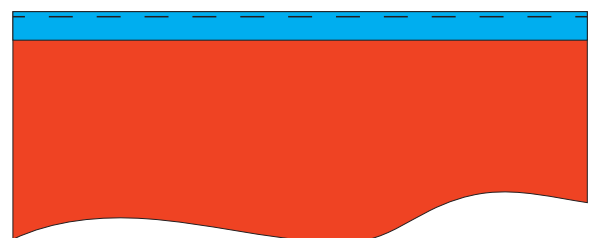


3. Fold the loop in half with the wrong sides together and press to make the pillow band.



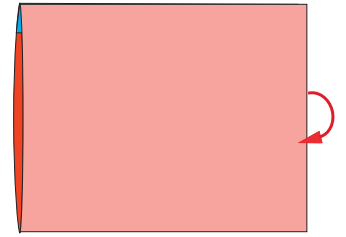
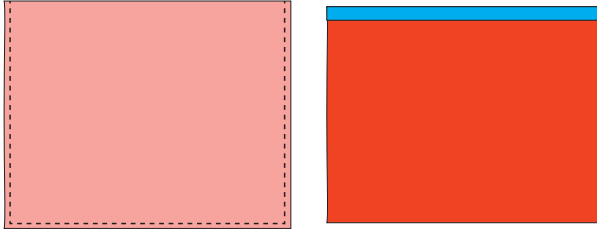
4. Fold the 2" x 27" piping strip in half, wrong sides together, to measure 1" x 27".

5. Place the folded piping strip on a long edge of the 16½" x 27" pillow body strip, raw edges aligned as shown. Using a long machine stitch or hand stitch, baste the piping strip to hold in place.



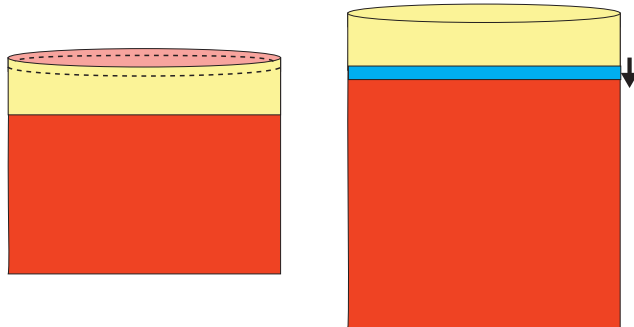
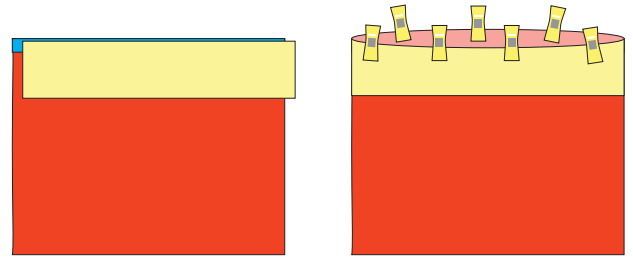
## On-the-Go Travel Pillowcase

6. Fold the 16½" x 27" pillow body strip in half lengthwise, right sides together, to make a 16½" x 13½" rectangle.

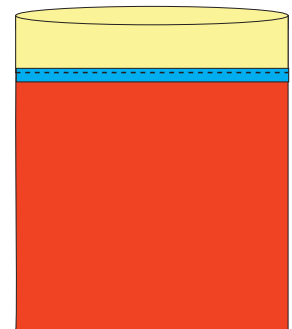


7. Sew the two long edges and the short edges without piping together. Turn right side out and press.

8. Place the pillow band loop over the piping edge of the pillow body as shown and use the Wonder Clips to hold in place.



9. Sew around the entire top edge through all of the layers. Press the seam toward the pillow body.



10. Topstitch ¼" down from the band edge to secure the seam allowance.

