

LOFT Collection



White



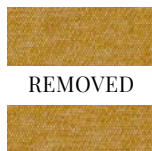
Sand



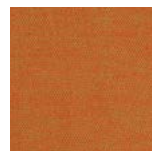
Silver



Grey



Mustard



Mandarin



Denim

Story behind:

The LOFT fabrics boast an incredible depth of color and silky softness. Combining two colors of thread gives the fabric a multidimensional look and an appearance of depth, ideal for a loft or modern interior. The fabric's special stain-resistant coating makes it easy to clean.

Fabric type: chenille

Composition: 62,3% AC. 29,1% PES. 4,7% VI. 3,9% LN

Martindale abrasion: 40'000 cycles (cat. A)

Stain resistant: yes

Flame retardant: on order

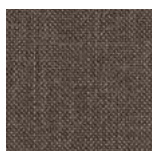
COCO Collection



Creme



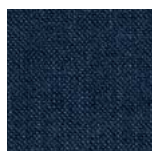
Beige



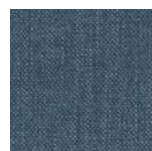
Taupe



Mustard



Indigo



Jeans

Story behind:

Fabrics from the COCO collection are typical Scandinavian thick weave. The 366 Concept furniture in beiges and grays from this collection will perfectly match the classic Scandinavian interior in the style of Mid-Century modern.

Fabric type: woven

Composition: 84% PES, 16% AC

Martindale abrasion: 100'000 cycles (cat. A)

Stain resistant: no

Flame retardant: on order

VELVET Collection



Story behind:

The VELVET collection is synonymous with luxury and elegance. Velvet has delighted since its arrival in Europe, providing a royal feel. This extremely tactile fabric, available in a soft colour palette, fits a broad range of interiors, adding a touch of glamour to any home. The fabric's special stain resistant coating makes it easy to clean.

Fabric type: knitted fabric

Composition: 100% PES

Martindale abrasion: 47'000 cycles (cat. A)

Stain resistant: yes

Flame retardant: on order

* This fabric is phasing out from 1 January - 31 December 2022. Please contact us before ordering.

SHINE VELVET Collection



Story behind:

The SHINE VELVET collection is synonymous with luxury and elegance. Velvet has delighted since its arrival in Europe, providing a royal feel. Shine Velvet is extremely tactile fabric, available in a soft color palette. It's very shiny, thanks to it beautifully harmonizes with light, changing the shade depending on the time of day.

Fabric type: knitted fabric

Composition: 100% PES

Martindale abrasion: 115'000 cycles (cat. A)

Stain resistant: yes

Flame retardant: on order

MARBLE Collection



White



Beige



Bottle Green



Mustard



Orange



Indigo



Light Blue



Black

Story behind:

Fabrics from the MARBLE collection are characterized by a unique structure, reminiscent of natural marble. There are no two identical pieces of this fabric. Thanks to it your furniture will be absolutely unique.

Fabric type: chenille

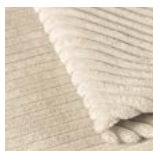
Composition: 50% Polyester, 28% Viscose, 12% Linen, 10% Cotton

Martindale abrasion: 45'000 cycles (cat. B)

Stain resistant: no

Flame retardant: on order

CORD Collection



Creme



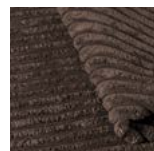
Taupe



Cappuccino



Mint



Cacao

Story behind:

CORD fabric is very soft and pleasant to the touch, and at the same time an extremely strong and durable velor fabric with an interesting, albeit classic texture. Perfect as a cover of the whole piece of furniture, a single element or as a material for elegant and stylish accessories.

Fabric type: velvet

Composition: 100% PES

Martindale abrasion: 100'000 cycles (cat. A)

Stain resistant: no

Flame retardant: on order

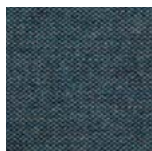
WOOL Collection



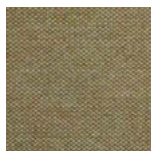
Sand



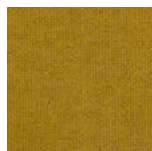
White Blue



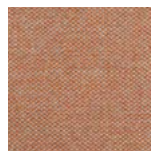
Grey Blue



Light Mustard



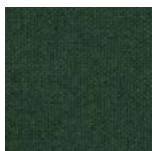
Mustard



Orange Beige



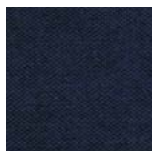
Olive



Bottle Green



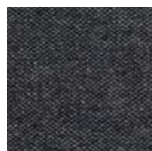
Turquoise



Blue



Jeans



Grey Black

Story behind:

The WOOL collection uses new-generation fabrics made from natural materials. Weaving long, smooth wild flax fibre between the wool creates an eye-catching two-tone colour inspired by precious stones. The addition of flax makes Wool fabrics less flammable, which means that they are ideal for commercial interiors, such as hotels or restaurants.

Fabric type: woven

Composition: 70% WO, 30% LI

Martindale abrasion: >50'000 cycles (cat. A)

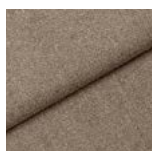
Stain resistant: no

Flame retardant: yes

BOUCLE Collection



Creme



Beige



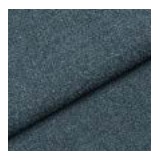
Taupe



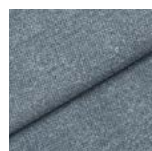
Olive



Mustard



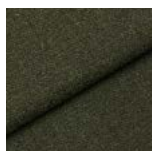
Denim



Jeans



Sierra



Bottle Green

Story behind:

Boucle fabric is a material woven from yarns with an irregular structure, with knotty lugs that can create a cozy atmosphere. It is coated with molecules and a hydrophobic coating that protects fabric from dirt and absorption of liquids. It also meets high quality standards – Oeko-Tex Standard 100 certificate. It has been subjected to laboratory tests to check resistance to puffs caused by scratching.

Fabric type: loop fabric

Composition: 68% PA, 29% PES, 3% VI

Martindale abrasion: 50'000 cycles (cat. A)

Stain resistant: yes

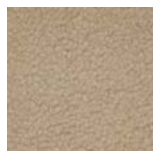
Flame retardant: yes

STANDARD FABRICS

TEDDY Collection



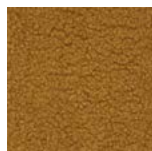
Creme



Beige



Cappuccino



Mustard

Story behind:

The fabrics from one of the most fashionable Teddy collection are characterized by light structure that resembles soft plush. What distinguishes them is knotted weave, high grammage and resistance to abrasion. Teddy looks great against the background of walls made of natural wood, raw brick, concrete or stone. Exceptionally soft texture and toned-down color range are ideal for rooms in Boho as well as Scandinavian style, where it adds a bit of warmth, coziness and lightness.

Fabric type: Loop Fabric

Composition: 100% Polyester

Martindale abrasion: > 50 000 cycles (cat. A)

Certificate: BS 5852 0+1

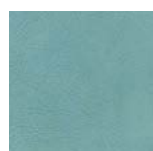
Stain Resistant: No

Flame retardant: No

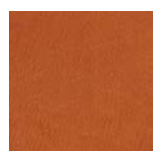
NATURAL LEATHER Collection



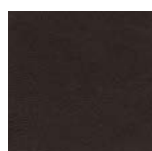
Creme



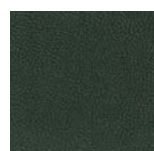
Light Blue



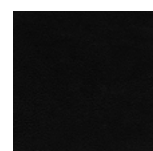
Cognac



Mocca



Bottle Green



Black

Story behind:

Natural leather available in our collection is one of the best naturally and sustainably tanned leathers – with rhubarb. Chromium-free leather tanning is a new, innovative way to obtain this noble raw material in an environmentally friendly manner. Natural leather can get dirty from fats, liquids or jeans.

Fabric type: natural leather

Composition: 100% natural leather dyed with rhubarb

Certificate:

Member of the International Association of Natural Textiles (IVN e.V.)