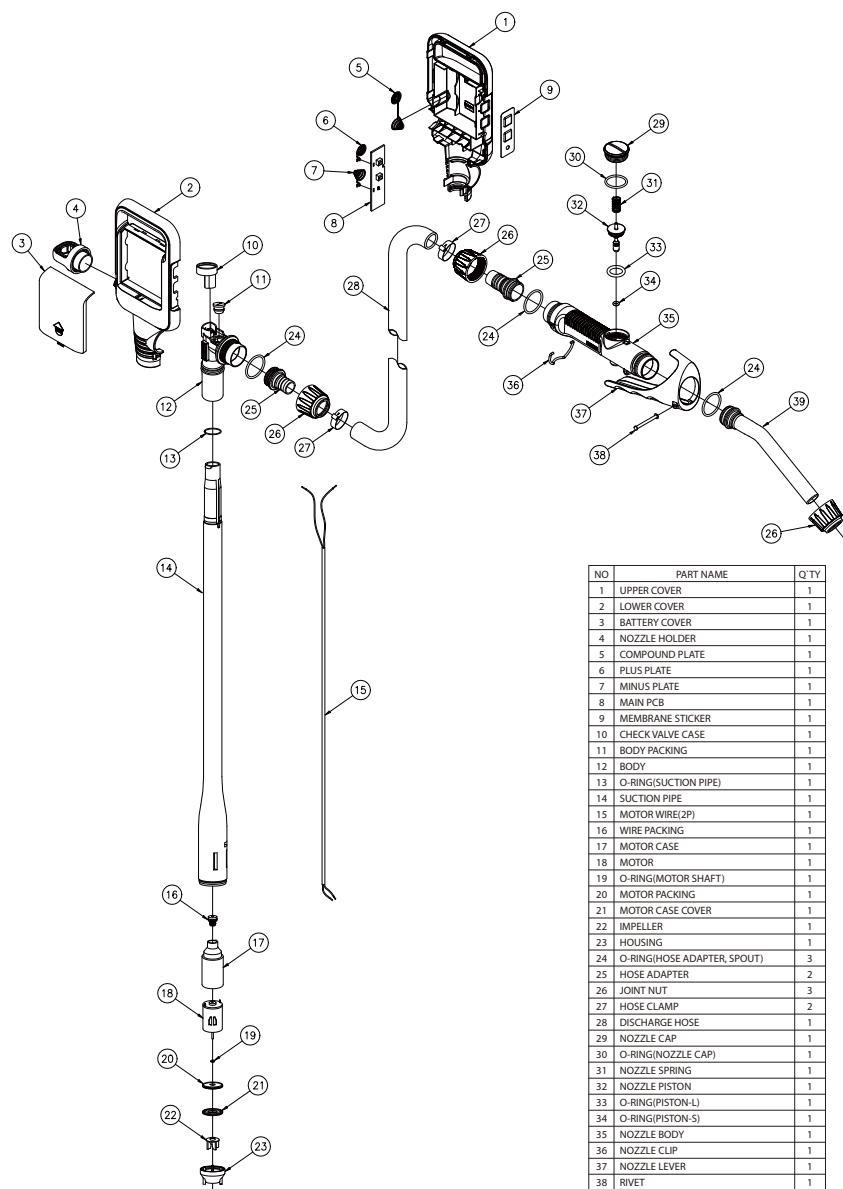


## ASSEMBLY DIAGRAM



• Specifications are subject to change without notice.

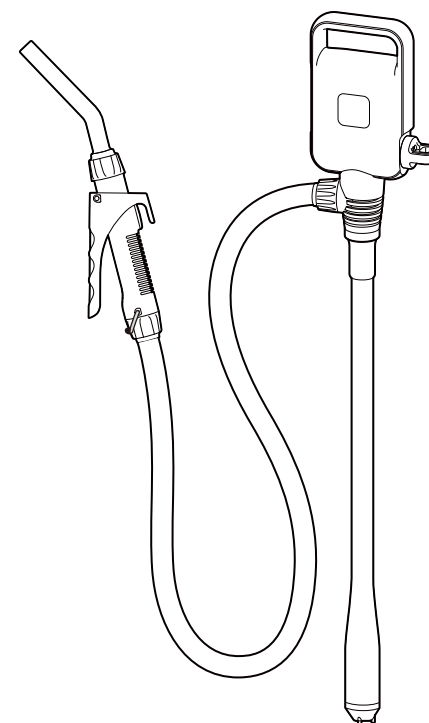
# ELECTRIC PUMP

## INSTRUCTIONS AND PRECAUTIONS

※ Read all instructions and precautions before use.

**MODEL: WAYPUMP14**

US 29/731,759 D856,476



**Dukshin Corp., Ltd.**

110, Seunggicheon-ro Namdong-gu, Incheon, 21695 Korea

[www.dukshin.com](http://www.dukshin.com)

## Precautions for Use

These instructions are to ensure the product is used correctly, safely, and to prevent any possible risk or damage to the user and/or others people. Our company shall not take any responsibility for any failure of product, malfunction and damages caused by improper use by the user or third parties.

### **DANGER**

If the directions of this sign are not followed, fatal accidents can happen and the user may die or get seriously injured.

### **WARNING**

If the directions of this sign are not followed, accidents can happen or the user can get injured.

### **CAUTION**

If the directions of this sign are not followed, the product can get damaged or the user can get injured.

### **DANGER**

Do not use for concentrated acids.

Only use on applicable liquids written on the specifications.

Do not use this pump for transferring the following liquids; Aceton, Benzen, Cresol, Ethyl, Phenol, Methyl ethyl, Concentrated caustic sodaliquid, Nitric acid, Hydrochloric acid, Sulfuric acid, thinner or solvents, Etc.

### **WARNING**

Do not refuel directly while the vehicle or equipment is turned on.

Do not leave the pump unattended.

Do not allow children to operate the product without adult supervision.

When disposing of pump, make sure to have it completely destroyed so that others won't use it again.

When you hand it over to another person, be sure to give them the instructions too.

### **CAUTION**

After using the pump, do not keep it on its side or upside down.

Make sure to remove any left-over liquid in the discharge hose after each use.

Do not alter or disassemble the pump.

Do not run the pump 'dry' or let the pump idle without transferring.

Make sure to turn off the power after using the pump.

Do not shock the pump.

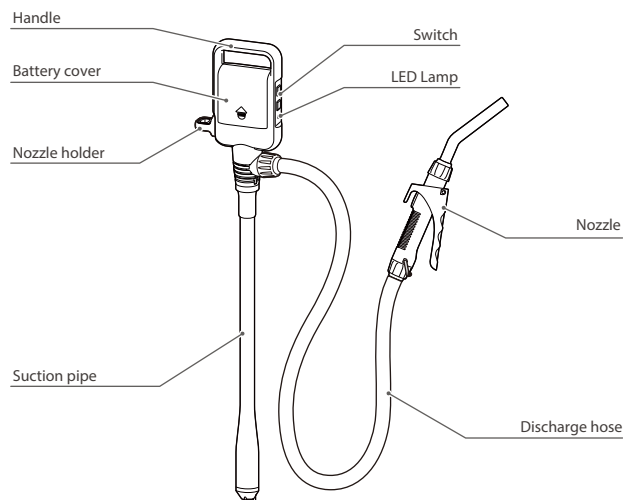
Do not use deteriorated or contaminated liquids and fuels.

Do not use this pump for hot liquids above 40°C (104°F).

Do not place the pump in a wet area.

When cleaning up the pump, do not use thinner, benzene, organic solvent, or glass cleaners.

## Names of Parts



## Specifications (MODEL: WAYPUMP14)

Delivery volume	Approx. 9 LPM (2.4 GPM)	Operating temperature	+5°C ~ 40°C (41°F ~ 104°F)
Suction pipe length	Approx. 446mm (17.6")	Operating voltage	DC3V
Discharge hose length	Approx. 1.5m (4.9ft)		
Applicable liquids	Gasoline, Diesel, Kerosene, DEF(AdBlue), Non-potable water, Antifreeze, Windshield washer fluid, Agricultural chemicals		

## Directions for Use

- Open the Battery Cover lid with slide up.
- Check the polarity directions embossed on the Battery Case.
- Insert two D-size batteries. slide down and close the Battery Cover.
- Insert the suction pipe into the supply tank.
- Place the nozzle into the receiving container to transfer liquid.
- Turn switch ON.  
\* LED is on while pump is running.
- Pull the nozzle lever and start supplying the liquid.
- Release the lever when the liquid supply is completed.
- Turn switch OFF.  
\* LED will turn off when pump is turned off.
- Pulling the lever of the nozzle, lift it up.
- Let the left-over liquid in the hose flow back into the tank.
- Insert the nozzle in the nozzle holder for storage.