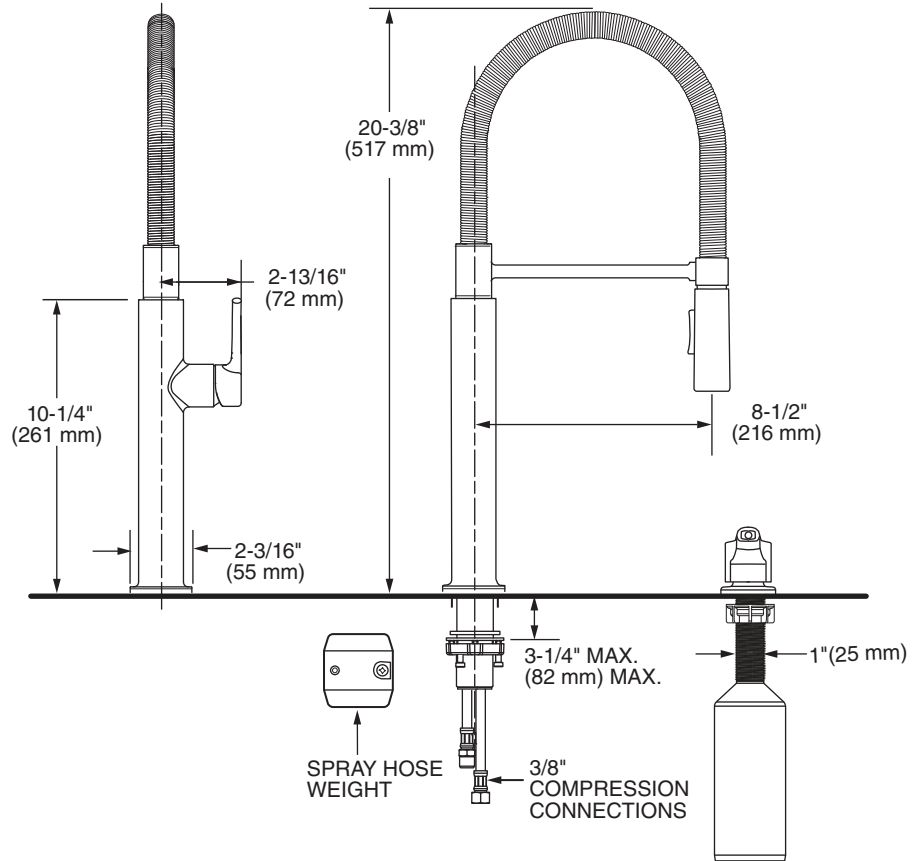


MODEL NUMBER:

□ 4803350 Semi Pro Pull-Down Dual Spray Kitchen
Faucet with Spring Spout
Stainless Steel, Chrome, & Matte Black Finish.



GENERAL DESCRIPTION:

More than a professional look, the Studio S Semi Pro Dual-Spray Kitchen Faucet with Spring Spout from American Standard combines commercial-inspired design thoughtfully engineered for today's home. Contemporary cylinder base with raised, one-piece lever handle and flexible stainless steel coil lends an impressive gourmet touch. Allowing easy maneuverability and ample room for filling large pots, this hardworking faucet is softened by a slightly flared, pull-down spray head that's easy to grasp and offers stream and powerful spray functions. The perfect choice for a complete kitchen makeover or easy update, Studio S promises drip-free dependability and adds five-star distinction to your kitchen design.

PRODUCT FEATURES:

- Flexible stainless steel coil spring for full reach and wipe-clean care
- Dual-function spray head offers stream and forceful spray for rinsing
- Easy-clean, one-piece lever handle eliminates tiny crevices where build-up hides
- Swivel spout rotates 360° for optimal reach and range of motion in and around the sink
- Rubber spray nozzles wipe clean easily with your fingertip
- Drip-free performance with high quality ceramic disc valve
- Durable brass and metal construction
- Pre-installed braided nylon supply lines
- Limited lifetime warranty

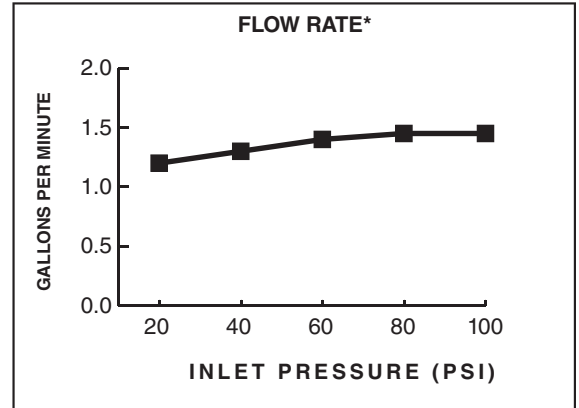
SUGGESTED SPECIFICATION

1- handle Semi-Pro Kitchen Faucet shall feature a culinary spring swivel spout, and metal reinforced hose, body and handle. Shall also feature 28 mm washerless ceramic disc valve cartridge, and 3/8" flexible supply hoses. Faucet shall be American Standard Model # 4803350._____.

CODES AND STANDARDS

These products meet or exceed the following codes and standards:

- ANSI A117.1**
- ASME A112.18.1**
- CSA B125.1**
- NSF 61/Section 9**
- NSF 372**



Product Number	Description	Finish Options		
		Polished Chrome	Stainless Steel	Matte Black
		002	075	243
4803350	1-handle Semi-Pro Kitchen Faucet. Soap dispenser and deckplate not included.			

ADA Meets the American Disabilities Act Guidelines
ANSI A117.1 Requirements for the physically challenged.

Soap Dispenser & Deckplate (Not Included)

