

Intertek
C22.2 no113
UL 1812

LIGHT COMMERCIAL SERIES

HRV

H1100-Fi-EC-N & H1100A-Fi-EC-N

Heat Recovery Ventilator
1170 CFM at 0.40 in.w.g (ESP)



CORE

OTHER PARTS

PRODUCT DESCRIPTION

The H1100-Fi-EC-N (polypropylene core) and H1100A-Fi-EC-N (aluminum core) heat recovery ventilator provides up to 1170 cubic feet per minute (550 L/s) of fresh outdoor air while exhausting an equivalent amount of stale indoor air, creating a well-balanced ventilation system. The highly efficient and quiet variable-speed EC motors use on average 80% less electricity of the H1100-Fi-N and H1100A-Fi-N at low speed, significantly increasing return on investment.

These ventilators are recommended for midsized non-residential spaces or dedicated zones within larger buildings such as classrooms, common areas of residential complexes and indoor parking garages.

Designed for versatile indoor installation, Aldes light commercial ventilators can fit almost anywhere and still provide easy access to the internal components for quick maintenance. The units also offer a choice of five continuous operation speeds and a demand-controlled high speed exchange mode.

KEY FEATURES

Electronically and independently adjustable supply and exhaust blowers (FlexControl).

Painted, heavy-gauge galvanized steel cabinets are attractive, rust-resistant and extremely durable.

Access doors on both sides of unit.

Doors on both sides of the unit to allow easy access to filters, cores and motors, no matter the installation constraints.

Fan exhaust frost protection, or optional recirculation defrost kit (factory installed or upgraded in the field).

Four highly efficient and noise reducing RadiCal centrifugal fans with EC motors from EBM Papst.

Units with polypropylene cores can be used for indoor pools and spas.



Plate Exchanger

Material: Polypropylene or aluminum

Casing

Material: Painted galvanized steel 22GA
Insulation: 1"(25 mm) Fiberglass with FSK
Drain Connection: Ø 1/2" (Ø 13 mm)
Duct Connections: 20" x 8" (508mm x 203mm)
Width: 36-1/4" (921mm)
Height: 23-7/8" (606mm)
Depth: 47-1/4" (1200mm)

Polypropylene core

Unit Weight: 206 lb (93 kg); 216 lb (98 kg) with recirculation
Shipping Weight: 261 lb (118 kg); 271 lb (193 kg) with recirculation

Aluminum core

Unit Weight: 223 lb (101 kg); 233 lb (106 kg) with recirculation
Shipping Weight: 278 lb (126 kg); 288 lb (131 kg) with recirculation



Mounting

Supplied with base rails. Support rods not included.



Electrical Requirements

230V/1p/60 Hz: FLA 5.6A, MCA 6.0A, MOP 15A
208V/1p/60 Hz (with field modification): FLA 6.0A, MCA 6.4A, MOP 15A
Terminal block for direct wiring to the building's electrical system.
Fused disconnect not included.



Frost Control

Cycles controlled by a temperature sensor when outdoor temperatures fall below 23°F (-5°C).

- Standard: Exhaust Defrost
- Optional: Recirculation Defrost (P/N 683950)



Blowers

Four backward-inclined motorized impeller, direct drive EC motor, variable speed, external rotor.



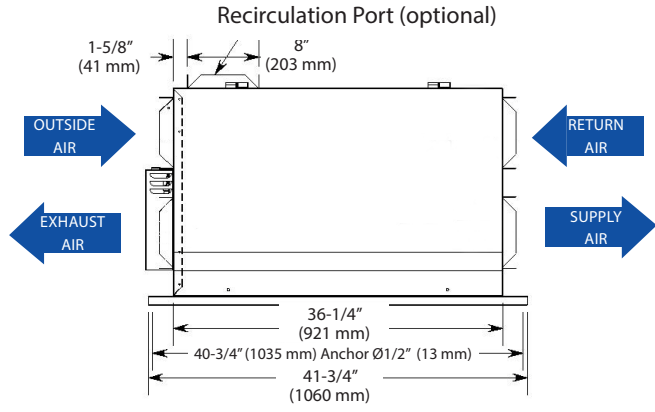
Filters

Additional Air Pressure Drop with Optional Filters		Filter type	P/N	#Filters in pack
Filter Type	Airflow CFM (L/S)	Aluminum	612266	2
	500 (236)	MERV 8	607039	1
	1100 (520)	High Efficiency	612265	2
MERV 8	0.04			
High Efficiency	0.22			

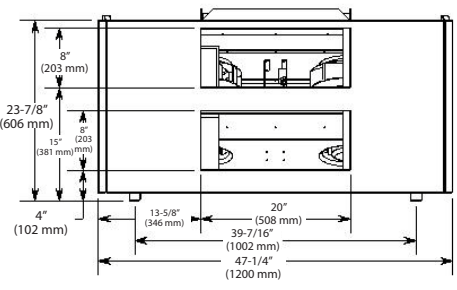
Note: This model requires a total of 6 filters. Make sure to get enough packs to meet the required amount.

Dimensions

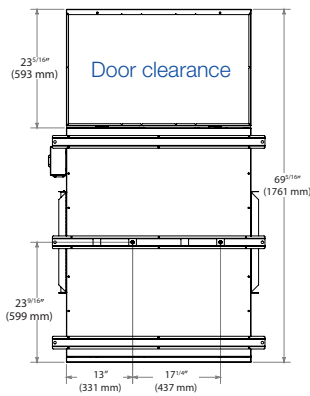
FRONT VIEW



SIDE VIEW



BOTTOM VIEW



Controls

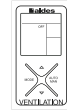
0-10 VDC inputs (for supply and exhaust) or multiple fixed speed options

Low-voltage dry contact (24 VAC, 20 VA) for:

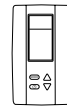
- Occupancy Control (On/Off)
- Interlock contacts
- Optional Recirculation Mode

24 VAC, 10 VA output for supply and exhaust dampers (by others)

Compatible with :



Digital Multifunction Control (P/N 611242-FC)



LCD Electronic Multifunction Control (P/N 611227)



20/40/60 Minute Timer (P/N 611228)



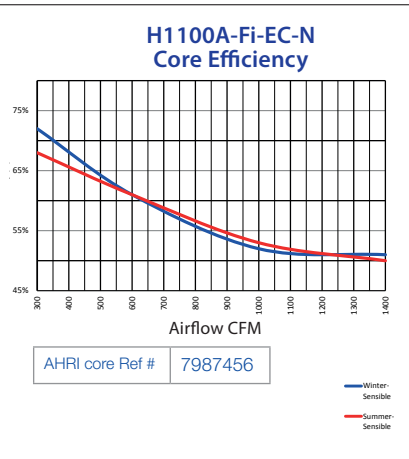
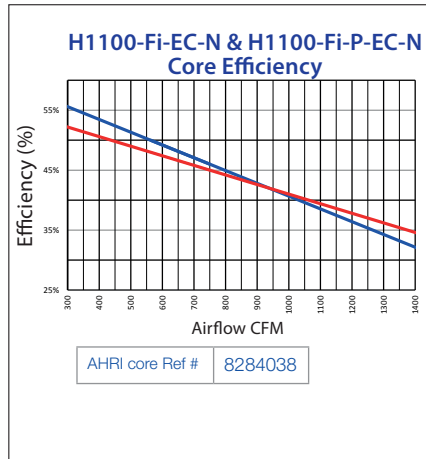
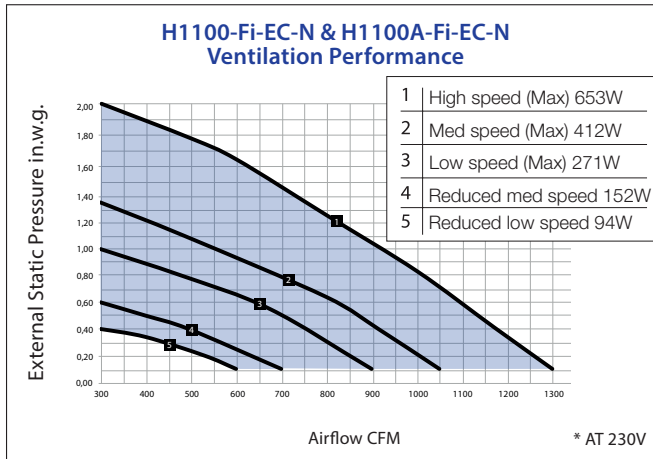
Speed Control (Low/Intermittent/High) (P/N 611229)



Mode Control (exchange or recirculation) (P/N 611230)

BACnet™ interface (P/N 611235)

Performance



Project:		Architect:	
Location:		Engineer:	
Model #:		Contractor:	
Quantity:		Comments:	
Submitted By:			
Date:			

For more information, contact your Aldes sales advisor, visit aldes-na.com, call 1.800.255.7749, or find us on

