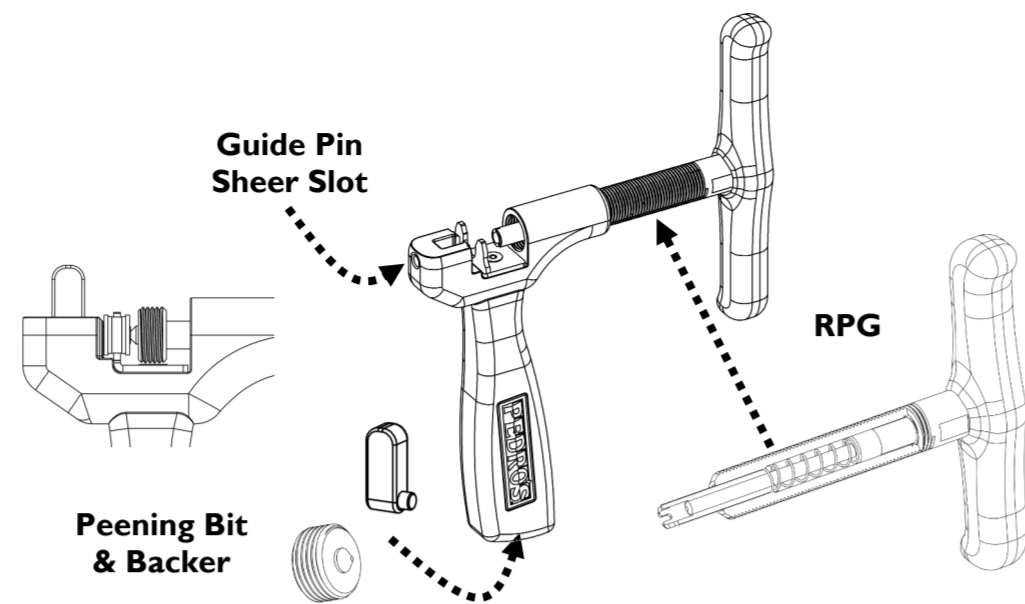
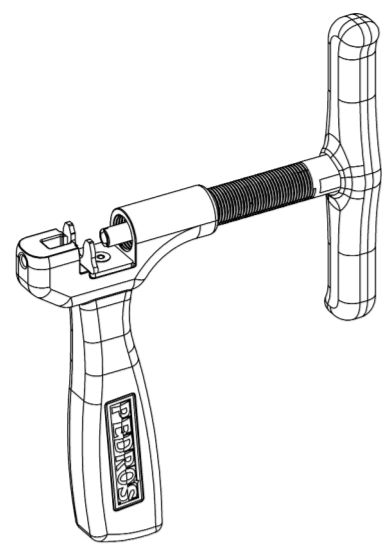


## Pro Chain Tool 3.1 User Manual

PN 6460331  
Revision 1, 01/2019  
©2019 Pedro's

www.pedros.com



**RPG:** The RPG, or Retracting Pin Guide, is a multi-purpose feature found only on Pedro's Tutto and Pro Chain Tools. First, the spring loaded RPG supports the pin up to the face of the chain eliminating broken pins and ensuring perfect alignment every time. Second, for chains with guide pins like Shimano® or Campagnolo®, the RPG encloses the guide pin to prevent loss, bending or breakage, and ensuring perfect installation. Third, the RPG accepts the Peening Bit required for installation of Campagnolo® 11-speed and 12-speed chains.

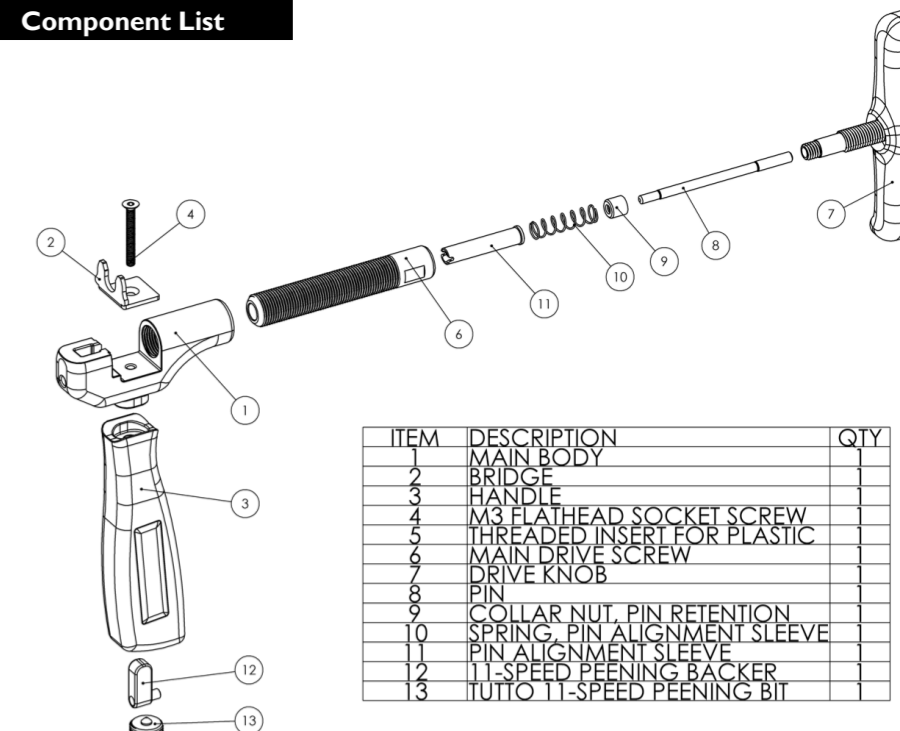
**Peening Bit and Backer:** The Peening Bit and Backer are handily stored in the base of the handle. These components are used for Campagnolo® 11-speed and 12-speed chain installation which requires a peening operation during installation of the chain rivet.

**Guide Pin Sheer Slot:** For chains that use a guide pin for installation, the Guide Pin Sheer Slot provides an integrated tool to remove the guide section from installation pins. After pressing the master pin into the chain, simply insert the guide section into the sheer slot and rotate the tool up or down.

**Chain Fit:** The Pro Chain Tool 3.1 with updated bridge geometry fits modern chains including SRAM® 12 Speed Road. Visit pedros.com/chainfit for compatibility info. The updated bridge can be retrofit onto the older Pro Chain Tool 3.0 to improve compatibility. The replacement bridge is item:

6460327- Replacement Bridge, Apprentice and Pro Chain Tool

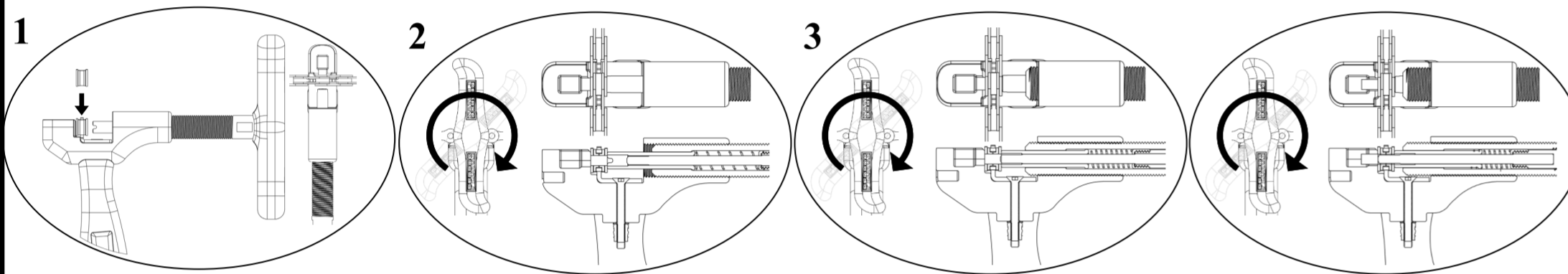
### Component List



ITEM	DESCRIPTION	QTY
1	MAIN BODY	
2	BRIDGE	
3	HANDLE	
4	M3 FLATHEAD SOCKET SCREW	
5	THREADED INSERT FOR PLASTIC	
6	MAIN DRIVE SCREW	
7	DRIVE KNOB	
8	PIN	
9	COLLAR NUT, PIN RETENTION	
10	SPRING PIN ALIGNMENT SLEEVE	
11	PIN ALIGNMENT SLEEVE	
12	11-SPEED PEENING BACKER	
13	TUTTO 11-SPEED PEENING BIT	

The Pro Chain Tool 3.1 is designed as a shop quality tool. The Pro Chain Tool 3.1 is easily adapted to most bicycle chains. This level of flexibility is achieved through use of features such as the RPG and Peening Bit & Backer. While the tool is designed to be simple to use, it is important to understand a few important usage details to prevent damage to the tool or chain. Depending on the chain you are working with, methods for installation, modification, or removal can differ considerably. It is important to read and follow any guidelines provided by the chain manufacturer. The following instructions cover general guidelines for installing, modifying, or removing the most common chain types using a Pro Chain Tool 3.1.

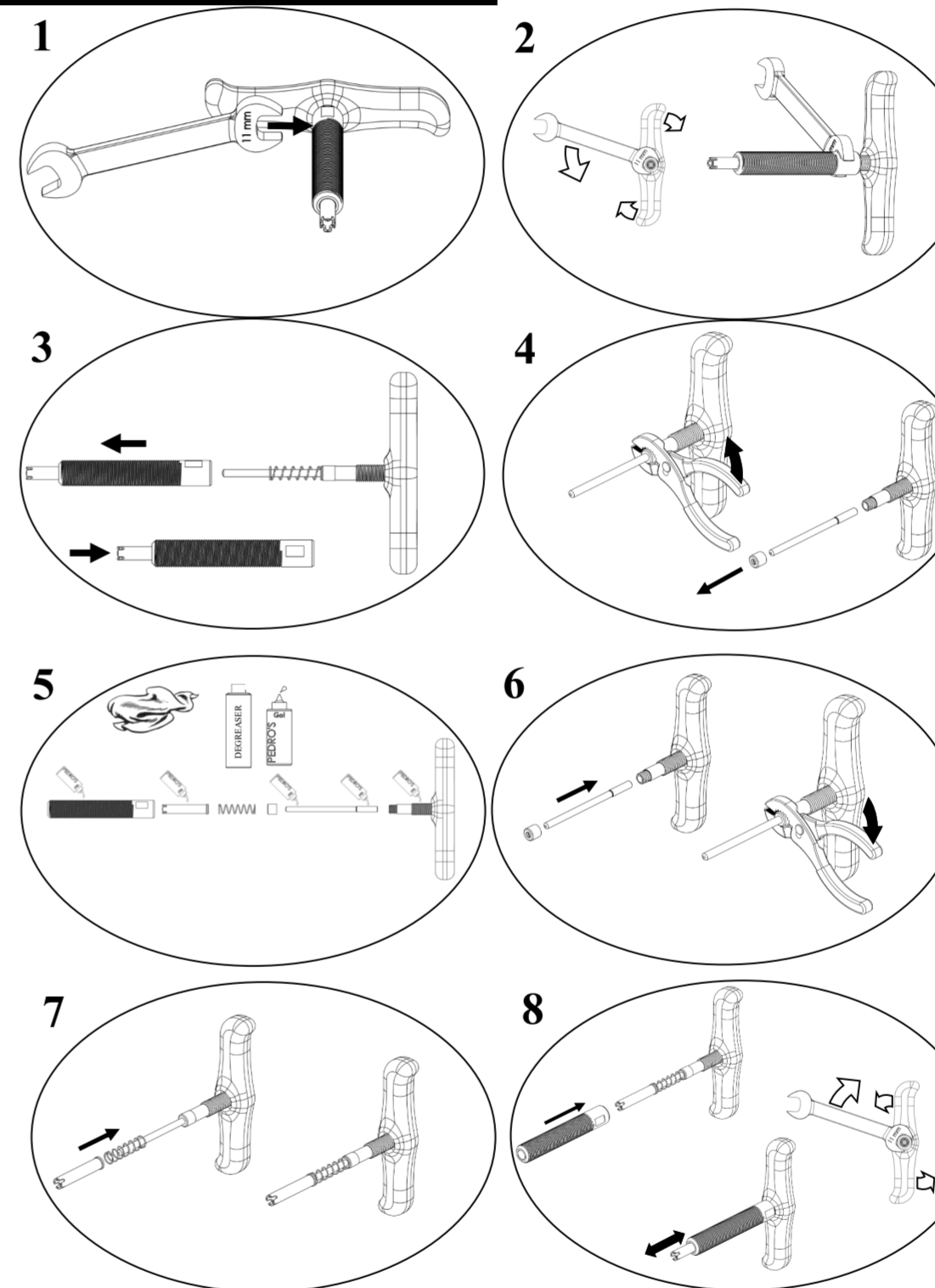
#### Separating a chain with the Pro Chain Tool 3.1



- Place chain onto bridge pressing downward lightly on chain to ensure proper positioning.
- Turn drive knob clockwise advancing drive screw assembly toward chain. RPG will contact chain first ensuring alignment and pin support.
- Continue turning until rivet is fully removed.\* For chains using re-usable rivets, make sure to stop press before rivet is fully removed.

\*If front edge of drive screw begins contacting chain, do not continue turning. This can damage bridge of tool.

#### How to Service Your Pro Chain Tool 3.1



The Pedro's Pro Chain Tool 3.1 is designed to be serviceable ensuring long service and high performance. You will need the following items:

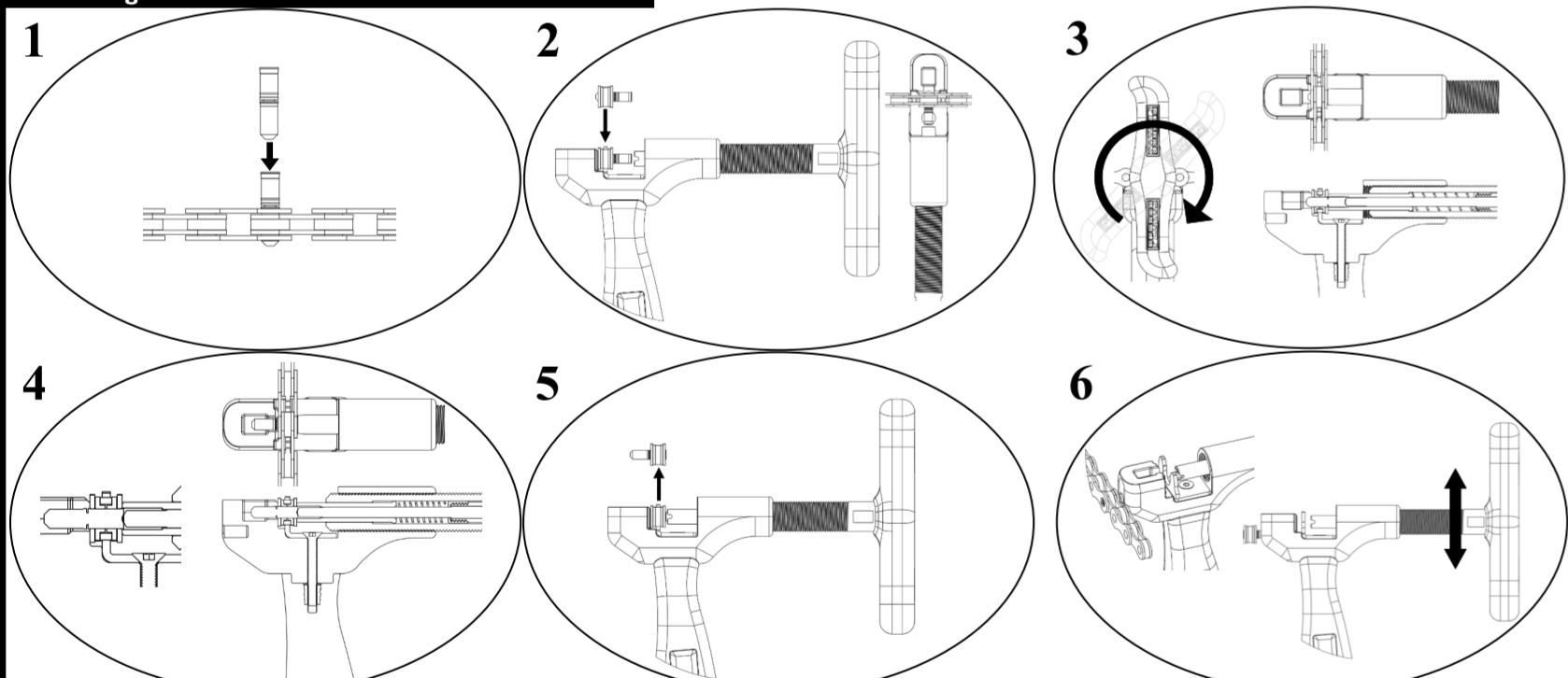
- 11mm Open-end Box Wrench
- Pliers
- Rag & Pedro's Degreaser
- Pedro's Lubricant and/or Grease

- Remove drive screw assembly from Main Body. Set body portion aside. Position 11mm open-end box wrench over two flats at base of Main Drive Screw.
- Holding Drive Knob, rotate wrench and knob against each other counter-clockwise unthreading Main Drive Screw from Drive Knob.
- Once unthreaded, remove wrench and pull drive screw to remove. If RPG and return spring remain on pin, slide off and set aside. If RPG and spring remain in drive screw, push RPG rearward to remove. Be sure to prevent loss of spring when removing RPG and spring.
- Using pliers, lightly grip Collar Nut and break free by counter-clockwise rotation. Finish Collar Nut removal by hand. Remove pin from Drive Knob
- With components disassembled, clean any contaminated parts using rag and Pedro's Degreaser. Rinse with water and let dry. Inspect each part for damage which may impede proper function. Replace if damaged. Liberally lubricate all threaded and sliding parts using a low viscosity lubricant like Pedro's Go! or Chainj.
- Begin reassembly of drive screw assembly. Insert pin into Drive Knob. Slide Collar Nut over pin and thread clockwise onto Drive Knob. Lightly tighten with pliers.
- Slide RPG and return spring over pin with spring positioned between Collar Nut and RPG as shown.
- Insert partially assembled drive knob into rear of drive screw and hand thread clockwise. Using 11mm open-end wrench, tighten using moderate force. Check RPG function to ensure components are properly assembled. RPG should slide past tip of pin till coincidence with opening of Main Drive Screw and should return freely.

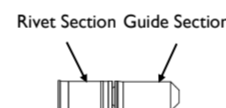
#### SPARE PARTS AVAILABLE FOR PURCHASE

Part Number	Description	UPC
6460327	Replacement Bridge, Apprentice and Pro Chain Tool	79098329398
6460340CT04	Tutto Drive Knob	79098329391
6460340CT05	Tutto Peening Bit	79098329398
6460340CT06	Tutto Pins (2 Spares)	79098329353
6460340CT09	Tutto RPG (Retracting Pin Guide)	79098329356

#### Installing Chain with Master Link/Installation Rivet

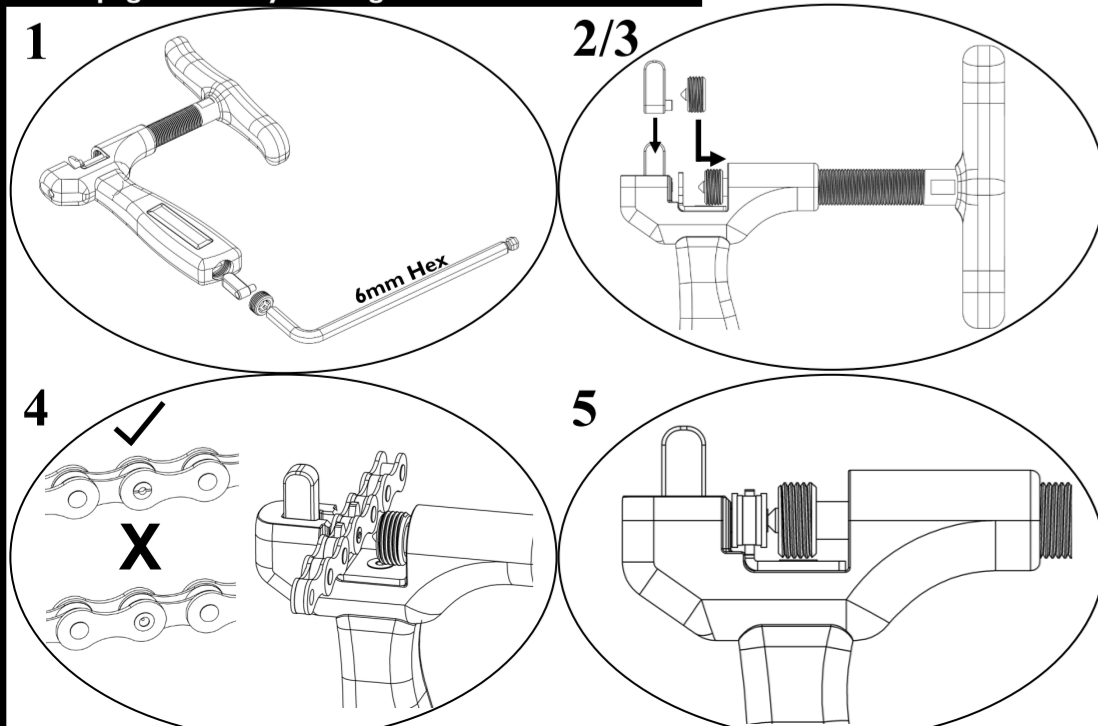


This type of chain is assembled using a special master pin made up of a guide section and a rivet section. Please read and follow any manufacturer instructions when installing this type of chain.



- Insert master link into the chain.
- Mount chain onto bridge as described above. Ensure drive screw is positioned to allow master pin to pass RPG.
- Turn drive knob clockwise advancing drive screw assembly forward and surrounding master pin with RPG.
- Continue turning drive knob, pressing rivet section of master pin into chain. Rivet should be centered between the outer plates of the chain when in final position.
- Once rivet is pressed to proper position, turn drive knob counter-clockwise to pull drive screw assembly away from chain. Remove chain from bridge.
- Bringing the tool to other side of chain, insert guide section of master link into Guide Pin Sheer Slot. Rotate tool to separate guide section from rivet section.

#### Campagnolo® Only: Flaring Master Rivet



Campagnolo® 11-speed & 12-speed chains require extra installation steps. These steps follow the 6 steps described for "Installing Chain with Master Link/Installation Rivet"

- Remove Peening Bit and Backer from base of handle by rotating counter-clockwise using a 6mm hex wrench,
- Position Peening Bit onto front tip of RPG as shown. Ensure chain can be mounted onto bridge without contacting Peening Bit.
- Insert Peening Backer into pocket on body as shown.
- Mount chain onto bridge. Note orientation of chain on bridge. The side from which the guide section was removed should face Peening Bit.
- Turn drive knob clockwise until resistance increases. Continue approximately 3/4 of a turn more to peen master link.
- Turn drive knob counterclockwise until Peening Bit clears face of chain. Remove chain from bridge. Remove Peening Bit and Backer from RPG. Return to handle.

#### Related Tools



**Chain Checker Plus II:** Chain Wear Check Tool, Chain Hook Tool, & Chaining Nut Wrench

- Precision laser cut design accurately measures 0.5% and 0.75% chain wear.
- Three point chain wear tool design properly isolates pin wear from roller wear.
- Chain hook tool and chaining nut wrench add functional versatility and value.



**Quick Link Pliers**  
Chain Master Link Pliers

- Laser cut, heat-treated, dual-sided jaws both install and remove master links.
- Cushioned grips provide comfort and control.



**Chain Pig II**  
Shop Quality, Hands Free, Chain Cleaner

- Pro-grade brushes and super absorbent sponge eat chain grime for breakfast, and are always hungry for more
- Surgically enhanced with stainless steel hardware and body sculpting ready for epic drivetrain battles
- Innovative quick-lock closure and drag-free derailleur hook for easy use and hands-free operation

**PEDROS**  
**LIFETIME WARRANTY** Visit pedros.com for details.

Pro Chain Tool 3.1  
PN 6460331  
Patent No. 8166745  
Made in Taiwan  
Specifications subject to change without notice.

Pedro's NA  
P.O. Box 320635  
Boston, MA 02132, USA  
Tel: +1 978 657 7101

Svenska filialen till Sports  
Adventures Intl. SA, Schweiz  
Västra Granholmen,  
185 99 Vaxholm, Sweden  
Tel: +46 8 559 269 08