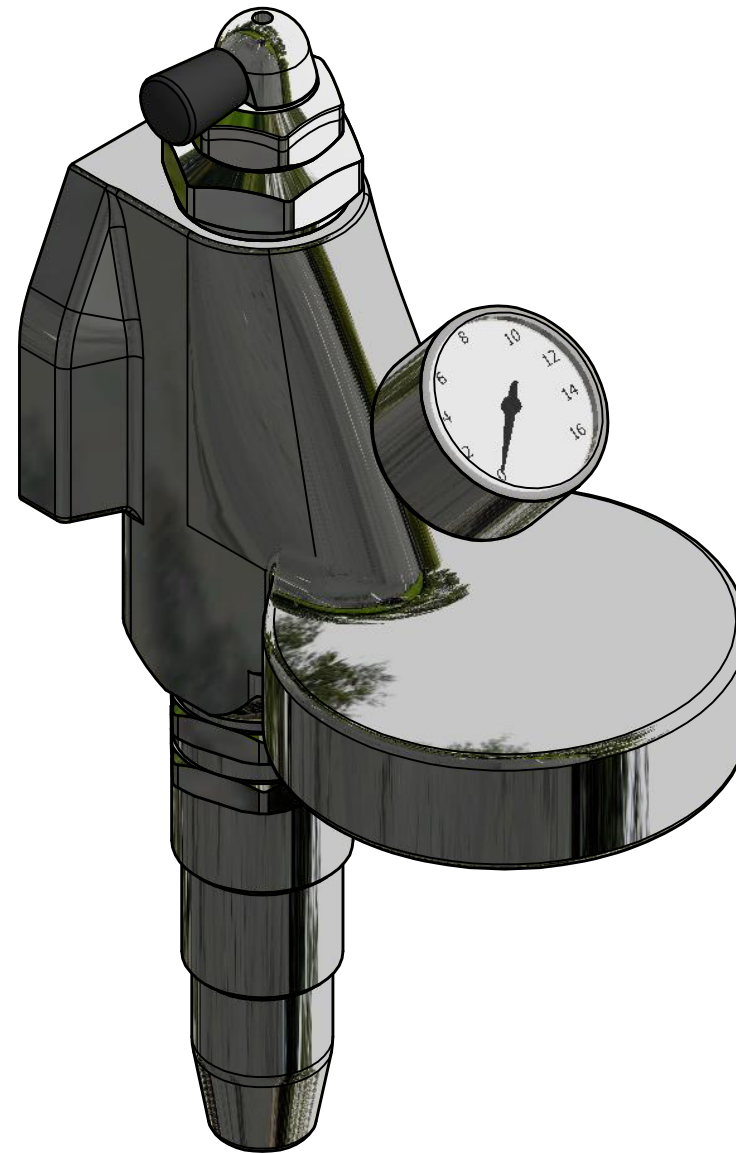
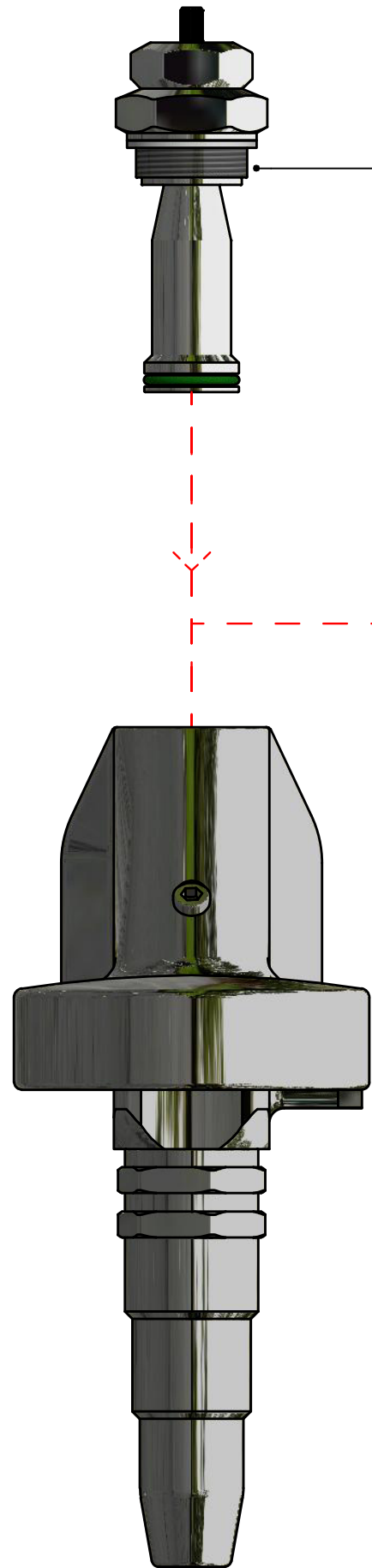


QUICKMILL

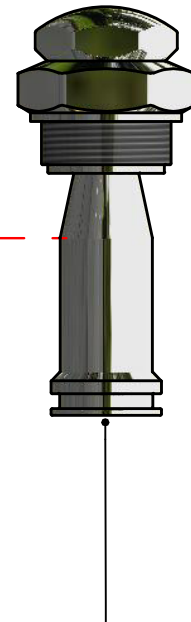
FLOW PROFILE VALVE ASSEMBLING INSTRUCTIONS



CAUTION: UNPLUG THE MACHINE FROM THE POWER SUPPLY AND MAKE SURE THAT IT IS NOT AT HIGH TEMPERATURE TO AVOID RISKS OF BURNS.

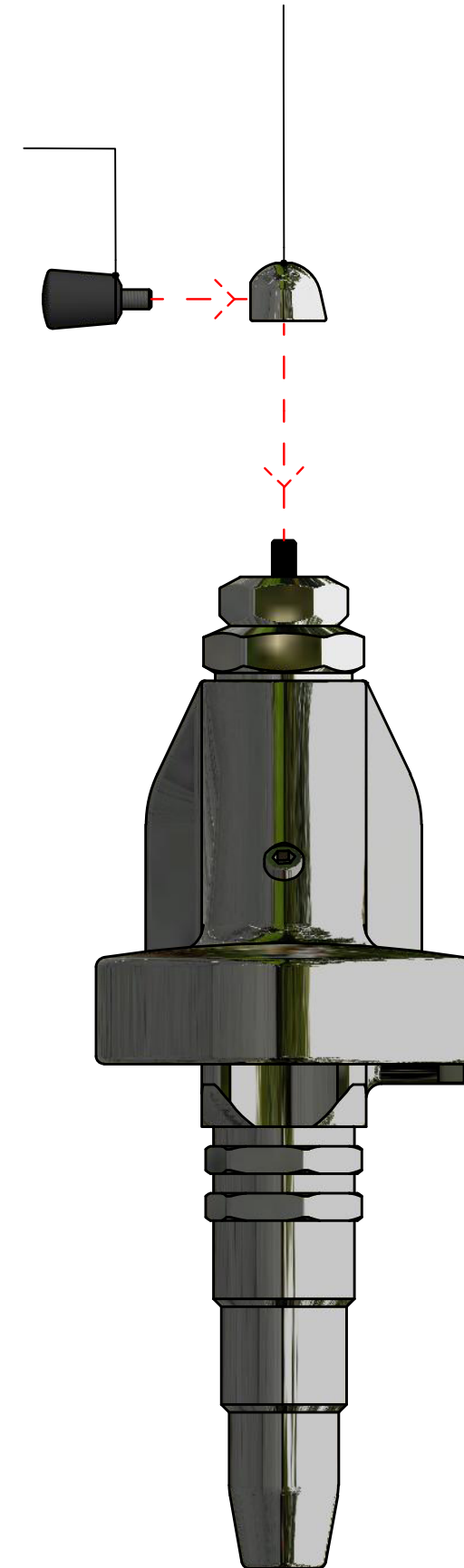


STEP 2:
SCREW THE NEW PROFILING
VALVE IN, AT THE POSITION
OF THE MUSHROOM.



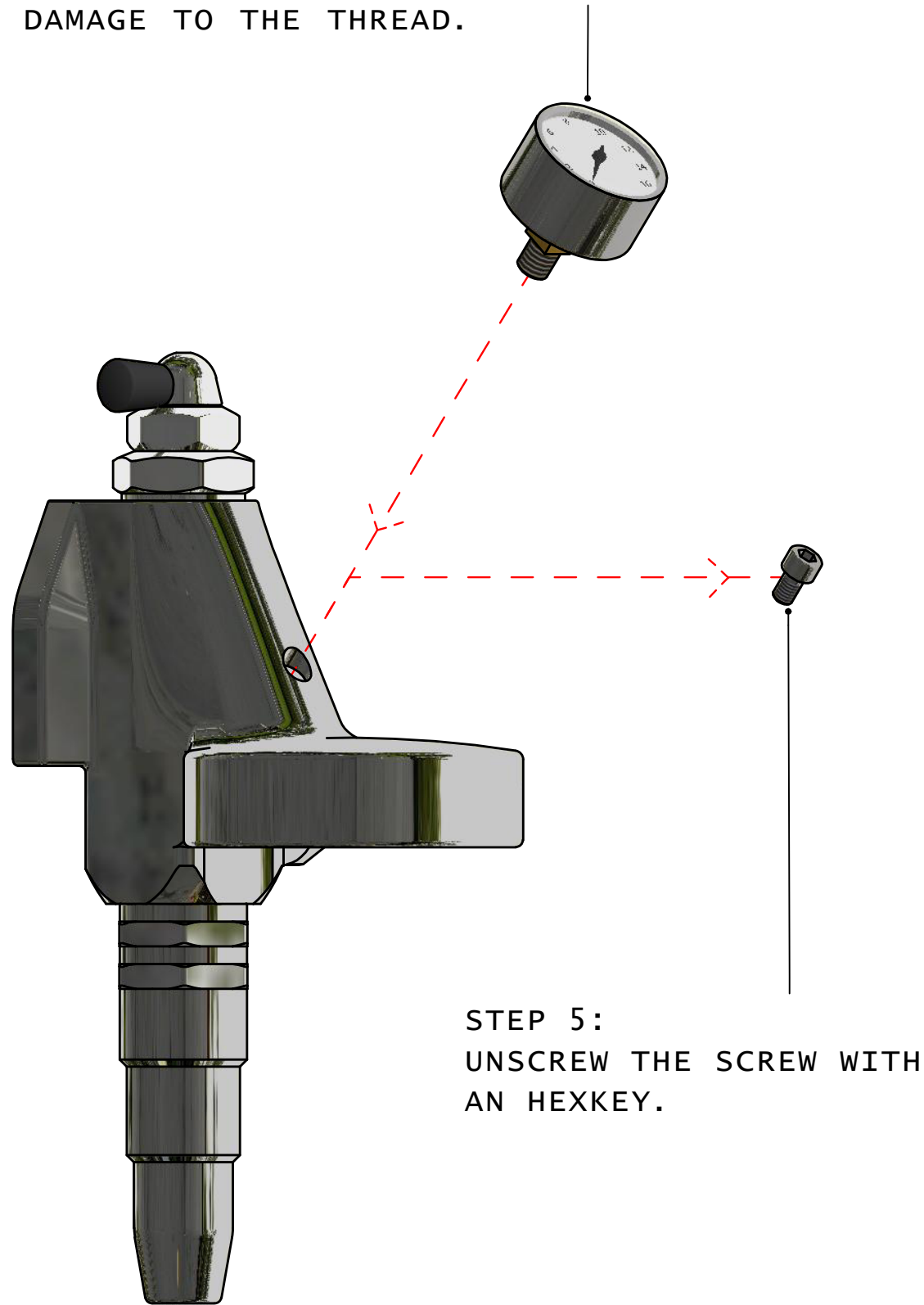
STEP 1:
UNSCREW THE MUSHROOM
BY USING A WRENCH
KEY.

STEP 3:
PRESS THE BUSHING POINTING AT YOUR
DESIDERED DIRECTION FOR THE CLOSED
POSITION ONTO THE SPINDLE.



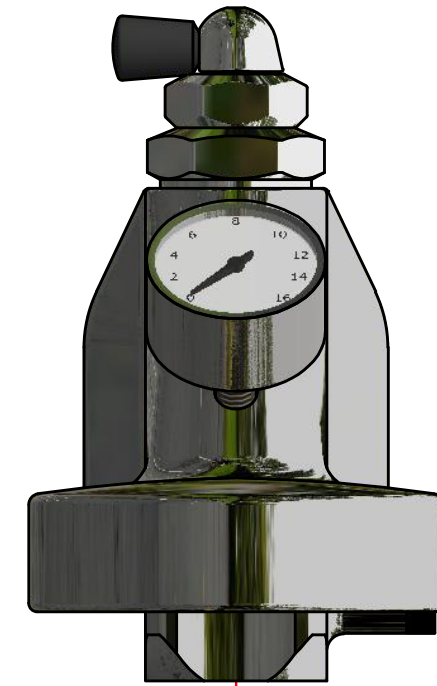
STEP 4:
SCREW THE HANDLE IN
AND TIGHTEN IT BY
HAND.

STEP 6:
MOUNT THE PRESSURE GAUGE.
NOTE: THE TEFLON SEAL OF THE SCREW HAS TO BE USED.
IT IS RECOMMENDED TO USE FDA-APPROVED THREAD SEALING.
CAUTION: DO NOT FASTEN THE GAUGE TO TIGHT,
TO AVOID DAMAGE TO THE THREAD.

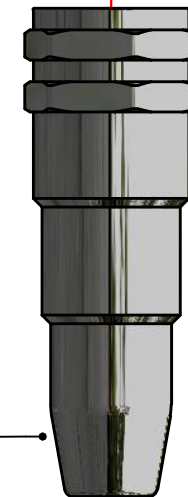


STEP 5:
UNSCREW THE SCREW WITH
AN HEXKEY.

STEP 8:
REMOVE THE OLD SPRING
AND THE SPRING GUIDE.
INSERT THE NEW SPRING
AND THE NEW SPRING GUIDE
PROVIDED.



STEP 7:
UNSCREW THE SLEEVE BY
USING A WRENCH KEY.



STEP 9:
SCREW THE SLEEVE.