

An evening in the room with

# WOVEN EARTH

PROUDLY HOSTED BY

**OBJECTS  
IN MY  
ROOM**

**Art auction catalogue /** THURSDAY 18 MAY, 2023

# TĒNĀ KOUTOU

Many thanks for joining us in supporting our friends, Woven Earth NZ. Our aim is to raise awareness and funds for this small but mighty charity making a real difference in our local communities.

Founder Kerry Trupp and her team of dedicated volunteers are working tirelessly to create safe and beautiful spaces for families to rebuild their lives free from violence.

They're helping several families each week, yet depressingly, demand for their services is higher than ever. With our support, we'll be helping them assist more families to move forward with hope and dignity.

We're excited to showcase this special selection of artworks generously donated by well known Aotearoa-based creators and makers Amanda Billing, Kate Cox, Lisa Fe'ao Tansley, Amanda Kemp, Keerti Siag, Shelley Simpson and Elaine Wright-Williams in our live auction.

We also want to send out a heartfelt thanks to everyone who has rallied behind this cause. We've been blown away by the generosity of so many sponsors, supporters, and volunteers who have donated their time, resources, and wares to make this event a collective success. While it's not possible to list everybody, please know that your contribution means the world.

As they say 'it takes a village' and together, through the power of community, we're making a positive impact that is helping change lives, one home at a time.

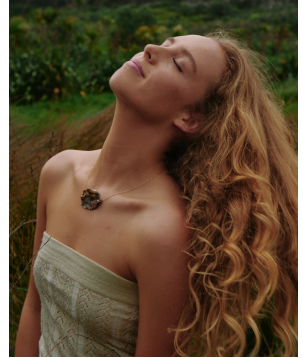
**NGĀ MIHI NUI,**  
**Kath Knight**  
**Objects in my room**



“WE ARE ALL WOVEN TOGETHER BY OUR JOURNEY ON EARTH AND WE ALL NEED COMMUNITIES OF PEOPLE, WHETHER IT IS ONE, SOME OR MANY TO SURVIVE AND THRIVE AND BE PART OF THE WORLD AGAIN.”



**Kerry Trupp**  
**CEO & Founder**  
**WOVENEARTH.ORG.NZ**



**[ 1 ] Mahu (heal), 2023**

Southern Ice porcelain

9c recycled rolled

gold chain

70 x 20mm

No reserve

**AMANDA KEMP**

NZ Maori artist Amanda Kemp creates work that beautifully reflects our connection with the natural world. Her sculptural jewellery pieces are all hand crafted from clay, often harvested from her whenua in Manutuke, Gisborne. They're then fired by traditional, ancient methods such as wood, raku and pit, harnessing the elements of earth, fire and water.

By being true to these considered and localised methods of making, her work holds and retains its energy. They are beautiful, one of a kind pieces, reflective of the natural world.

[www.utu-amandakemp.com](http://www.utu-amandakemp.com)



**[ 2 ] Garnet, 2023**

Acrylic paint, decoupage,  
ink, PVA & polyurethane

290 x 390mm

Reserve \$200

**LISA FE'AO TANSLEY**

Lisa uses a variety of resources, such as crayon, pencil, ink, and others, to create unique assemblage art. For her, the act of creation provides a sense of purpose and a profound connection to the world that is both rich and fulfilling. Her artwork is characterised by its playful, campy, humorous, bold, and anti-establishment qualities.

As a person with a disability, Lisa was born with a primary immune disorder that causes chronic illness. However, she finds solace in creating her artwork at home, working at her own pace. Her art is intended to bring joy to those who appreciate it and serve as a reminder to enjoy life, regardless of the obstacles one may face.



**[ 3 ] The Tor on a foggy day**

**Waiake Beach, 2022**

Limited edition 2/25

Photograph printed on

300gsm Watercolour paper

White matt acid free frame

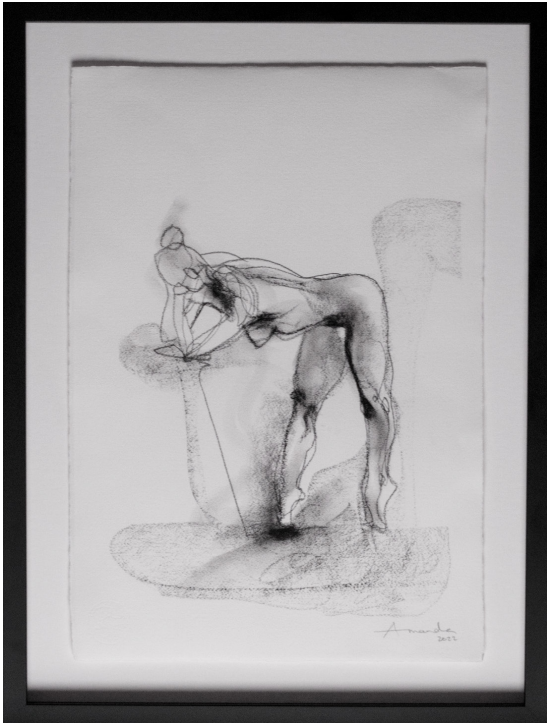
500 x 700mm

Reserve \$220

**KEERTI SIAG**

Born and raised in India, Keerti has spent the last 12 years living in New Zealand, falling in love with the unique landscape and bird life. She finds motivation and inspiration in shooting the local landscapes and feels blessed to be living close to beautiful beaches.

She finds the ability to freeze a fleeting moment and to render it in the most beautiful detail so satisfying. We all have a special connection with the physical landscape around us and it's this that Keerti aims to capture. She likens her compositions to travel, taking the viewer on a journey down memory lane where they can relive or reminisce about past experiences or memories.



**[ 4 ] Pointe, 2022**

Conté and chalk  
on paper

Black frame

450 x 690mm

Reserve \$300

**AMANDA BILLING**

Widely known as an actress, Amanda is also a photographer, designer, and visual artist. Her photography practise began in 2016 and is her main occupation when she's not acting.

However, her heart lies in drawing and painting, a "project" she's been working on since she could hold a crayon. Collaborating with female dancer friends, she captures the naked body's expression on camera and then translates it through paint and ink. Her monoprints and paintings speak to us - as sculpture and paintings of the nude always have - about power, sensuality, mortality. Fleeting human life - "mine", "yours", "ours" - in all its light and shade.

[www.amandabilling.co.nz](http://www.amandabilling.co.nz)



**[ 5 ] Copper, 2022**

Risograph print on  
200gsm Fabriano paper

White frame

390 x 520mm

Reserve \$300

**SHELLEY SIMPSON**

An Auckland-based visual artist and current PhD candidate at AUT, Shelley's creative practice is an inquiry into the way in which matter - the material and non-material that makes up the world - is densely storied.

Through listening to, and participating in such stories of earthly matter, she works to deepen the way in which we, as humans, can become aware of how embedded and embodied we are in complex material, more-than-human interactions.

[www.shelleysimpson.co.nz](http://www.shelleysimpson.co.nz)



**[ 6 ] Plate of Pears, 2022**

Oil on canvas

Pine box frame

300 x 300mm

Reserve \$400

**ELAINE WRIGHT-WILLIAMS**

Working from her Auckland studio Elaine's practice is built upon a continued research and engagement with many traditions of oil painting.

She is drawn to the intimacy of domestic interior spaces. Her work documents those everyday spaces often filled with light, colour, treasured objects and furniture.

Her love of design has been cultivated over 20 years in the industry. She often feels the road she has walked is the one less travelled and draws on the emotions from the hardships and joy experienced to create sensitive paintings for people to love.

[www.wrightwilliamsart.com](http://www.wrightwilliamsart.com)





**[ 7 ] Midnight  
Shadows, 2022**  
Acrylic on canvas  
White box frame  
760 X 560mm  
Reserve \$400

#### **KATE COX**

Visual artist Kate Cox is an abstract painter. Her practice continues to expose and resolve emotions and memories as pure abstraction or abstract landscape works. The process involves energetic bold and delicate painterly marks primarily with acrylics and oil sticks.

She has placed as finalist for Walker and Hall Waiheke Art Award and Estuary Art and Ecology Award. She manages her creative practice from her studio, now only steps away from her home, after a recent move North to Kerikeri.

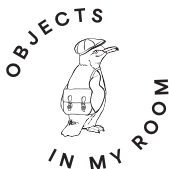
[www.katecoxart.com](http://www.katecoxart.com)



**MAKING A BID PRIOR  
TO THE LIVE AUCTION?**

Simply use this QR code and access  
the silent auction online. Not sure?

Get in touch below and we'll be  
on hand to help you.



**Long Bay Village Store**

81 Te Oneroa Way, Long Bay 0630 Tāmaki Makaurau, Aotearoa NZ

Tel 027 343 5811 Email [hello@objectsinmyroom.com](mailto:hello@objectsinmyroom.com)

Follow us on Instagram or FB [@objectsinmyroom](https://www.facebook.com/objectsinmyroom)

**OBJECTSINMYROOM.COM**

Objects in my Room. A Geysler Creative Group Ltd company