

ISOLATION SERIES

SEATED LEG PRESS

COMMERCIAL SELECTORIZED STRENGTH - GR614

From BodyKore's Isolation Series, the Seated Leg Press is the ultimate training equipment for building massive strength and bulk in your lower torso. The heavy-duty frame has a linear bearing system that allows a smooth movement at any weight. The three-position backrest allows users of all different shapes and sizes to comfortably use the machine. All in all, the Seated Leg Press is perfect for anyone looking to work on their mid-to-lower body.

14-Gauge Machine
Welded Frame

Heavy-Duty Marine
Grade Cushions

Cup/phone/key holder

Ergonomically Designed,
Function-Specific Handles

Oversized
Foot Plate



Dimensions
70" x 44" x 73"

Weight
604lbs

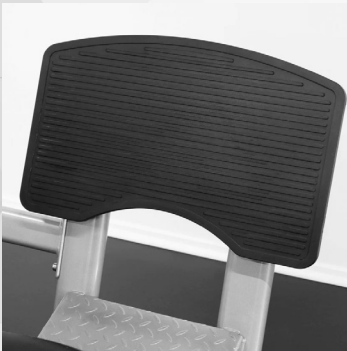
ISOLATION SERIES

SEATED LEG PRESS

COMMERCIAL SELECTORIZED STRENGTH - GR614



Warranty	
STRENGTH WARRANTY (NORTH AMERICA ONLY)	
FRAME (NOT COATINGS)**	LIFETIME
WEIGHT STACKS	10 YEARS
PULLEYS	10 YEARS
PIVOT BEARINGS	10 YEARS
OTHER ITEMS NOT SPECIFIED	3 YEARS
LABOR	3 YEARS
UPHOLSTERY / CABLES / SPRINGS / GRIPS	1 YEAR
ACCESSORIES	6 MONTHS



Oversized Foot Plate
Oversized foot plate with non-slip rubber surface provides safe and stable foot placement during exercise



14-Gauge Machine Welded Frame



Heavy-Duty Marine Grade Cushions



Ergonomically Designed, Function-Specific Handles
To reduce stress on contact points to enhance user comfort



Walk-Through Entry Design
Allows for dual use: Leg press and Calf extension



Multiple Seating Positions
Give full range of motion



Cup/phone/key holder