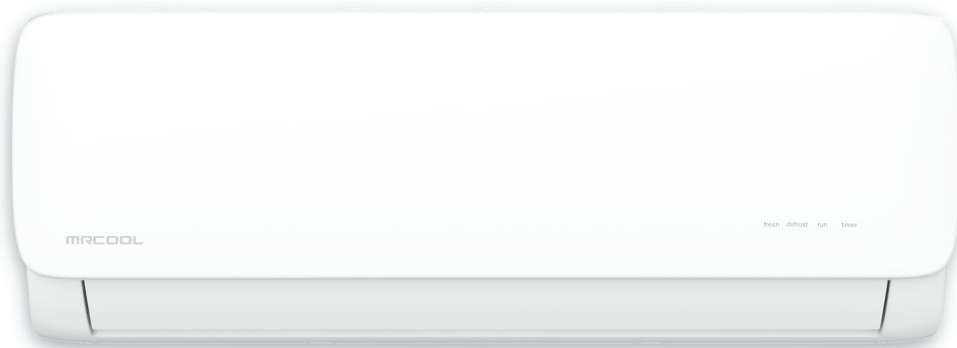


# Easy Pro™ Series



## Do-It-Yourself Mini-Split



Affordable  
Highly Efficient  
Low Temp Cooling  
16 Ft Install Kit Included \*



\*Pat: <https://www.mrcool.com/mrcool-patents/>



[WWW.MRCOOL.COM](http://WWW.MRCOOL.COM)

Version Date: 02-26-2024

# FEATURES



Timer



Leakage Detection



Follow Me®



Gold Fin® Condenser



Smartphone App

**LOW 5°F**

Low Temp Cooling\*



Quiet Running



DC Inverter

## SPECIFICATIONS

\*For models with low temp cooling systems.

MODEL NO.	Indoor Unit Outdoor Unit	EZPRO-09-HP-WMAH-115 EZPRO-09-HP-C-11516	EZPRO-12-HP-WMAH-115 EZPRO-12-HP-C-11516	EZPRO-18-HP-WMAH-230 EZPRO-18-HP-C-23016	EZPRO-24-HP-WMAH-230 EZPRO-24-HP-C-23016
-----------	-----------------------------	---	---	---	---

### CAPACITY & PERFORMANCE

Cooling Capacity	Btu/h	9000	12000	17000	24000
SEER2	Btu/w	20	18.9	19.3	18
Heating Capacity	Btu/h	10000	12000	18000	25000
HSPF2-4	Btu/w	9.4	9.3	8.6	8.3
HSPF2-5	Btu/w	7.2	7	6.7	6.5
Indoor noise level (Hi/Mi/Lo)	dB(A)	38.5/34/22.5	42/35.5/27	44.5/39/23.5	45/40.0/27
Outdoor noise level (Hi/Mi/Lo)	dB(A)	55	56.5	54	60

### ELECTRICAL PARTS

Power Supply	Ph-V-Hz	115V,1Ph,60Hz	115V,1Ph,60Hz	208-230V,1Ph,60Hz	208-230V,1Ph,60Hz
Minimum Circuit Ampacity*	A	20.0	20.0	15.5	21.0
Maximum Fuse (Breaker)*	A	30.0	30.0	25.0	35.0

\*Outdoor Condenser

### DIMENSIONS & WEIGHT

Net Dimension (WxDxH)	Indoor	inch mm	28.70 x 7.87 x 11.50 729 x 200 x 292	31.57 x 7.87 x 11.61 802 x 200 x 295	38.23 x 8.98 x 12.64 971 x 228 x 321	42.60 x 9.21 x 13.27 1082 x 234 x 337
	Outdoor	inch mm	28.35 x 10.63 x 19.49 720 x 270 x 495	28.35 x 10.63 x 19.49 720 x 270 x 495	30.12 x 11.93 x 21.85 765 x 303 x 555	35.04 x 13.46 x 26.50 890 x 342 x 673
Packing Dimension (WxDxH)	Indoor	inch mm	32.68 x 16.14 x 13.58 830 x 410 x 345	36.02 x 16.34 x 14.17 915 x 415 x 360	42.72 x 17.52 x 14.96 1085 x 445 x 380	49.09 x 19.57 x 17.13 1247 x 497 x 435
	Outdoor	inch mm	33.15 x 14.06 x 22.83 842 x 357 x 580	33.15 x 14.06 x 22.83 842 x 357 x 580	35.04 x 14.96 x 24.61 890 x 380 x 625	40.55 x 17.24 x 28.74 1030 x 438 x 730
Net/Gross Weight	Indoor	lbs kg	17.64/32.95 8.0/14.95	24.03/34.40 10.9/15.6	29.98/42.55 13.6/19.3	35.27/60.40 16/27.4
	Outdoor	lbs kg	54.45/71.1 24.7/32.2	55.11/71.1 25/32.2	63.49/79.43 28.8/36.03	97.66/115.1 44.3/52.2

### REFRIGERANT & PIPING

Refrigerant Type	oz	R-410A / 24.69	R-410A / 32.1	R-410A / 45.86	R410A / 62.79
Piping Size Liquid Side/Gas Side	inch mm	1/4" / 3/8" 6.35 / 9.52	1/4" / 1/2" 6.35 / 12.7	3/8" / 5/8" 6.35 / 12.7	9.52 / 15.9

### NATIONAL AVERAGE ANNUAL OPERATING COSTS

Cooling Cost**	\$	-	-	-	-
Heating Cost**	\$	-	-	-	-

Starting charge does not guarantee line charge. Running pressure must be checked by a technician.