

# X-Head 1200 LC Installation Guide

06. 01. 2020

908. 652. 6779

sales@machineartmoto.com

**Parts:** Left & Right Guards  
Left & Right Rubber Liners  
2-T25 x 20 mm Torx screws  
(re-use 2 existing Torx screws)  
2- T50 Long Torx bolts

**Tools** T25 Torx screw driver  
**Required:** T50 Torx socket wrench  
Small Torque wrench

**A torque wrench is essential!**  
Most installation problems involve oil leaks or bolt breakage because of over tightening. Use a **small torque wrench** set in Newton Meters or Inch/Pounds. Or, take the bike to a qualified BMW technician for installation.

**\* BEFORE BEGINNING WORK, READ THESE INSTRUCTIONS FROM START TO FINISH.**

**\* PLACE BIKE ON CENTER STAND ON LEVEL GROUND.**

**\* ALLOW ENGINE TO COOL BEFORE STARTING INSTALLATION**

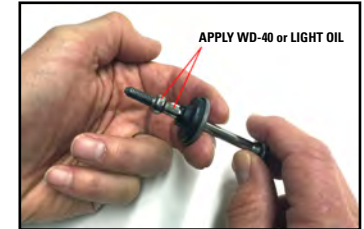
**\* AFTER THE FIRST RIDE, RE-CHECK FASTENER TIGHTNESS.**



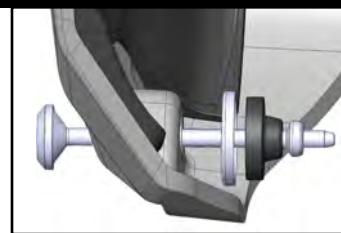
**1** Remove one T25 Torx screw retaining the spark plug cover. *This screw will be re-used.*  
Remove spark plug cover.



**2** Unscrew rear valve cover bolt with a T50 Torx socket wrench. Pull out the bolt, cup washer, & rubber seal. *You may feel resistance. Washer & rubber seal will be re-used.*



**3** Apply light oil to the shaft of the bolt just removed. Placing two fingers behind the cup washer, gently pull off the rubber seal.



**4** Insert NEW T50 Long Bolt through hole in X-Head. Place cup washer over the Bolt with flat side against inside of X-Head. Apply light oil over the ball & shaft & gently push rubber seal over the ball as shown.



**5** Place X-Head into position. With your fingers, start turning the Bolt until it engages the thread. *This may take a few tries.* Keep it finger tight, for now.



**6** Fasten the front of X-Head with the T25 Torx screw previously removed. *Do not yet tighten!*



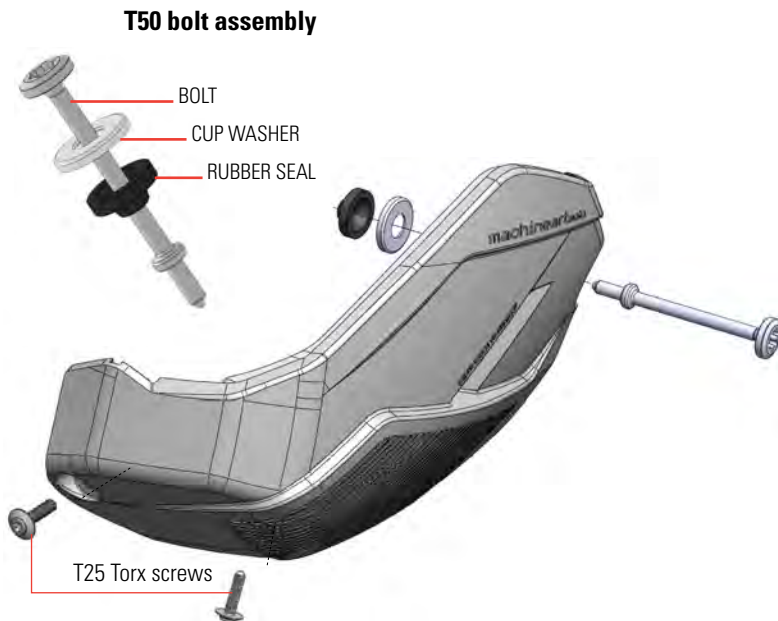
**7** Fasten the bottom of X-Head with the new T25 Torx screw provided. *It is difficult to see the thread on the underside of the engine, so be careful not to cross-thread the screw.*



**8** Tighten the T50 Bolt with a T50 socket and a **small torque wrench**: Torque: **10 Nm; Newton/meters or 88 in/lb. that's inch/pounds.** *A little less is better than too much!* **DO NOT OVER TIGHTEN!**

**NOTE:**  
A light film of oil may appear at the bottom of the valve cover after removing the T50 Bolt. Carefully wipe it off before re-installing the bolt and finishing the installation.

**Care Instructions:**  
Dirt will accumulate around X-Heads during use. Periodically remove them to clean the engine, typically at service intervals. Any rubber residue can be cleaned with fine polishing compound.



**WARNING AND DISCLAIMER:** All parts manufactured, designed or sold by Machineart Moto ("MaMo") should be installed by a qualified BMW motorcycle technician. The risk of injury or component damage is increased by improper installation or misuse of equipment. MaMo's customers must exercise good judgment in the use, control, alteration, part selection and installation, and maintenance of their motorcycles. In the event of a possible defect in material or design, or any other defect in a part manufactured, designed or sold by MaMo, the responsibility of MaMo is limited to a refund of the purchase price or the replacement of the part if MaMo determines the part to be defective, and subject to MaMo's inspection of the part within thirty (30) days from the date of purchase. (Note: any attempted repairs or modifications made to MaMo products will void this limited warranty). MaMo, under no circumstances will be responsible for incidental and/or consequential damages, property damage, personal injury damage, or damage, injury, cost or expense of any kind or nature whatsoever except as provided by law. MaMo makes no other warranty, express or implied, including without limitation any warranties of merchantability and fitness for a particular purpose.



Machineart, Inc.  
203 Harrison St.  
Frenchtown, NJ 08825

Specialized BMW Products

908. 652. 6779

## **IMPORTANT INSTRUCTION SUPPLEMENT**

### **Installation of X-Head\_1200 LC cylinder guards**

**Most problems experienced by customers installing X-Heads themselves are due to their breaking bolts because of over tightening. ***Do not over tighten!*** ***Do not give it that extra push for good measure - You will break it!*****

***Use a SMALL SIZE torque wrench* calibrated in Newton Meters or Inch Pounds. Tightening torque is maximum **10 Nm (Newton/meters) 88 IN./LB.** , or **SLIGHTLY LESS – 9.5 Nm - equivalent to 84 IN/LB.****

**Apply a little WD-40 or light oil to the threads.** Also, to aid in slipping the bolt through the OEM rubber seal before positioning the X-Head on the cylinder, add a little WD40 to the shoulder just above the threads and on the bolt shaft. Then, place your fingers behind the cup washer to evenly pull the seal over the ball and minimize distortion.

Insert the bolt through the X-Head into the cylinder head and **hand turn it** until it stops. Then, **use the small torque wrench** to reach the torque setting. That should be about 1/8 ~ 1/4 turn more. ***Do not overdo it!***

**\* If you don't have a torque wrench** or have any concern about installing X-Heads correctly, have them installed by a BMW dealer.

Wipe away any oil that may have been left on the surfaces after installation.

If you have any questions, please call us at **908 652 6779** ext. 2.  
Or, email us at **sales@machineartmoto.com**