

Parts: Slipscreen
Uses stock fasteners

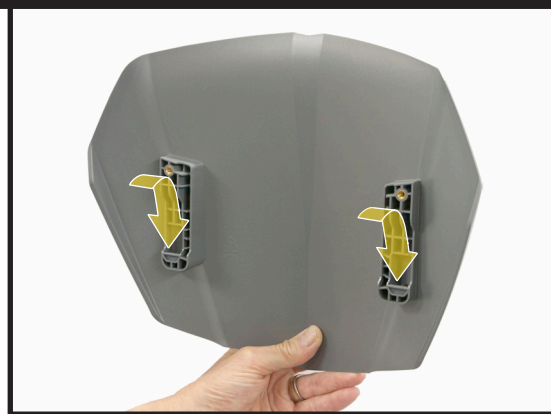
Tools Required: T25 Torx Driver

- 1** To remove the stock windshield, raise it to its upright position.

Remove two T25 Torx screws and lift off the windshield. *These screws will be re-used.*



- 2** To install the **Slipscreen**, position it to engage the mounting tabs on the bike where shown, and align the two mounting holes.



- 3** Secure the **Slipscreen** using the two T25 Torx screws removed in step 1.
Use a straight shaft Torx driver for convenience.

** To assure a secure installation, apply a small amount of Loctite 248 to the screws. Loctite 248 is a stick applicator that does not drip.*

** Clean with soap and water.
Coat with ArmorAll for best appearance.*



WARNING AND DISCLAIMER: All parts manufactured, designed or sold by Machineart Moto ("MaMo") should be installed by a qualified motorcycle technician. The risk of injury is increased by improper installation or misuse of equipment. MaMo's customers must exercise good judgment in the use, control, alteration, part selection and installation, and maintenance of their motorcycles. In the event of a possible defect in material or design, or any other defect in a part manufactured, designed or sold by MaMo, the responsibility of MaMo is limited to a refund of the purchase price or the replacement of the part if MaMo determines the part to be defective, and subject to MaMo's inspection of the part within thirty (30) days from the date of purchase. (Note: any attempted repairs or modifications made to MaMo products will void this limited warranty). MaMo, under no circumstances will be responsible for incidental and/or consequential damages, property damage, personal injury damage, or damage, injury, cost or expense of any kind or nature whatsoever except as provided by law. MaMo makes no other warranty, express or implied, including without limitation any warranties of merchantability and fitness for a particular purpose.