



DomiWorks Engineering 2JZ to S55/S63/S65 adapter kit Installation Guideline

Version 1.0

2021-02-01

The information in this document is guidelines of how to install this kit to your engine. Failing to follow these guidelines may result in permanent damage to the included components, which DomiWorks Engineering cannot be held responsible. Always work calm and methodical and always wear appropriate safety equipment.

Contents

This kit includes the following items

1x Adapter plate, fits Toyota 2JZ engine and BMW DCT (S55, S63 or S65) gearbox

1x 2JZ DCT Coupler hub (different lengths depending on which kit is bought)

8x Flywheel bolts

Adapter plate bolts:

5x M12x20x1.25 screws

2x M10x50x1.25 screws

2x M10x30 screws

S55 bolts:

2x 14.5 Guiding dowels

2x M12x40 screws

4x M12x55 screws

1x M10x55 screw

3x M8x50 screws

3x M8 washers

S63 bolts:

2x 14.5 Guiding dowels

6x M10x40 screws

2x M10x50 screws

S65 bolts:

2x 14.5 Guiding dowels

8x M10x40

If anything is missing please contact sales@domieng.com



Installation of adapter plate

Mount the adapter plate on the engine aligning with the engine dowels. Gently tap the adapter in place and mount the included bolts in the corresponding bolt hole. This is common for all three variants of adapter plate. See page 4.

Installation of flexplate/flywheel and DCT coupler hub

If using a flexplate, install the flexplate on the crankshaft. Place the DCT coupler hub on top and guide it on the crankshaft lip. Install flywheel bolts, tight and torque.

Install starter motor with the included M10x50x1.25 bolts.

If using a manual flywheel, minor modification is required. The center needs to be turned down to a specific thickness, this is to get correct spline engagement and also to get proper guiding on the crankshaft lip. See page 5 for required modification. The base thickness of the flywheel cannot exceed dimension A and the diameter must be larger than dimension B.

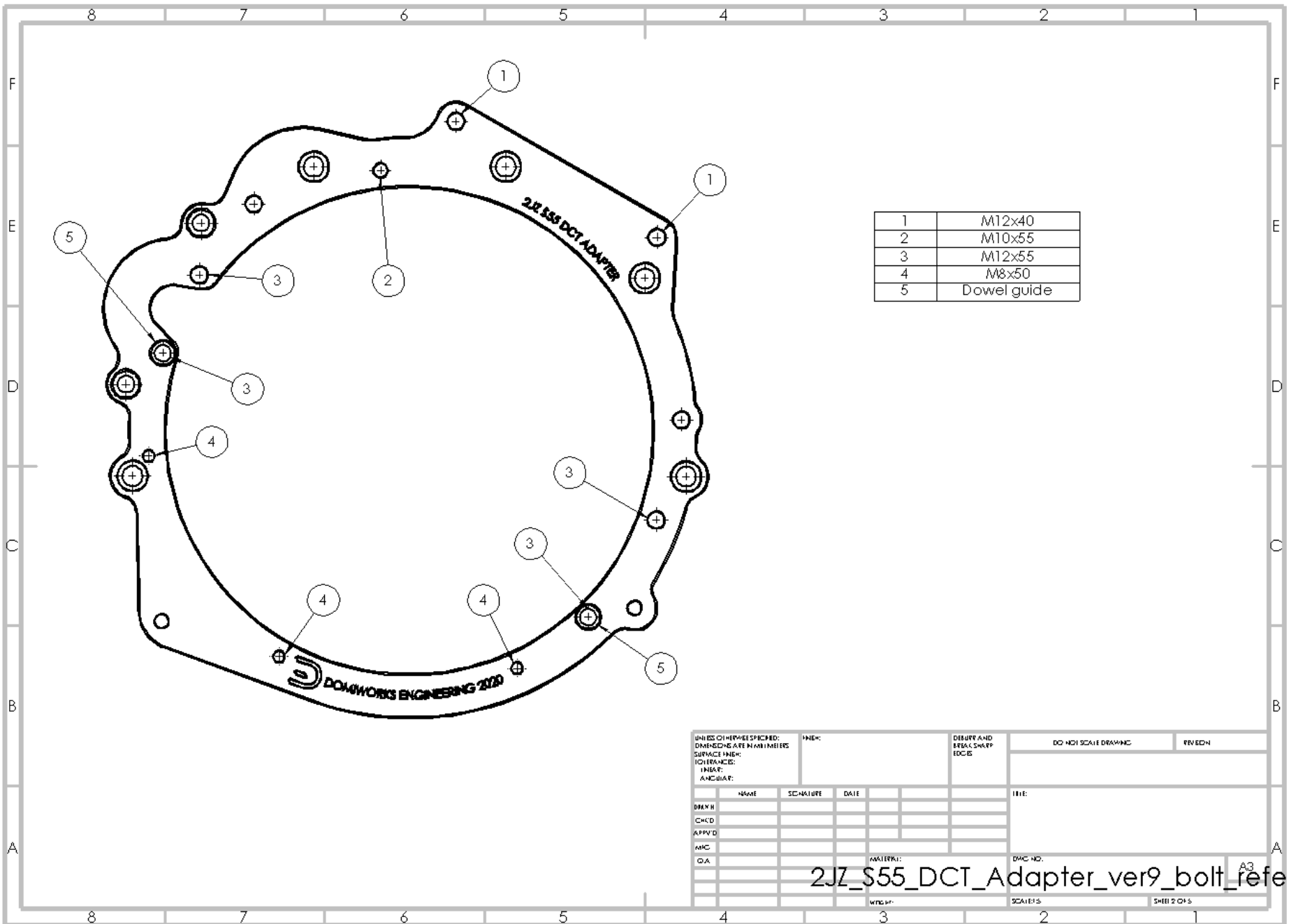
When flywheel has been modified according to the dimensions required, use same mounting method as flexplate, see above.

Installation of gearbox

Insert the included dowel guides into the adapter plate. Make sure to apply spline grease on the input shaft and the DCT coupler splines before mounting the gearbox to the adapter plate.

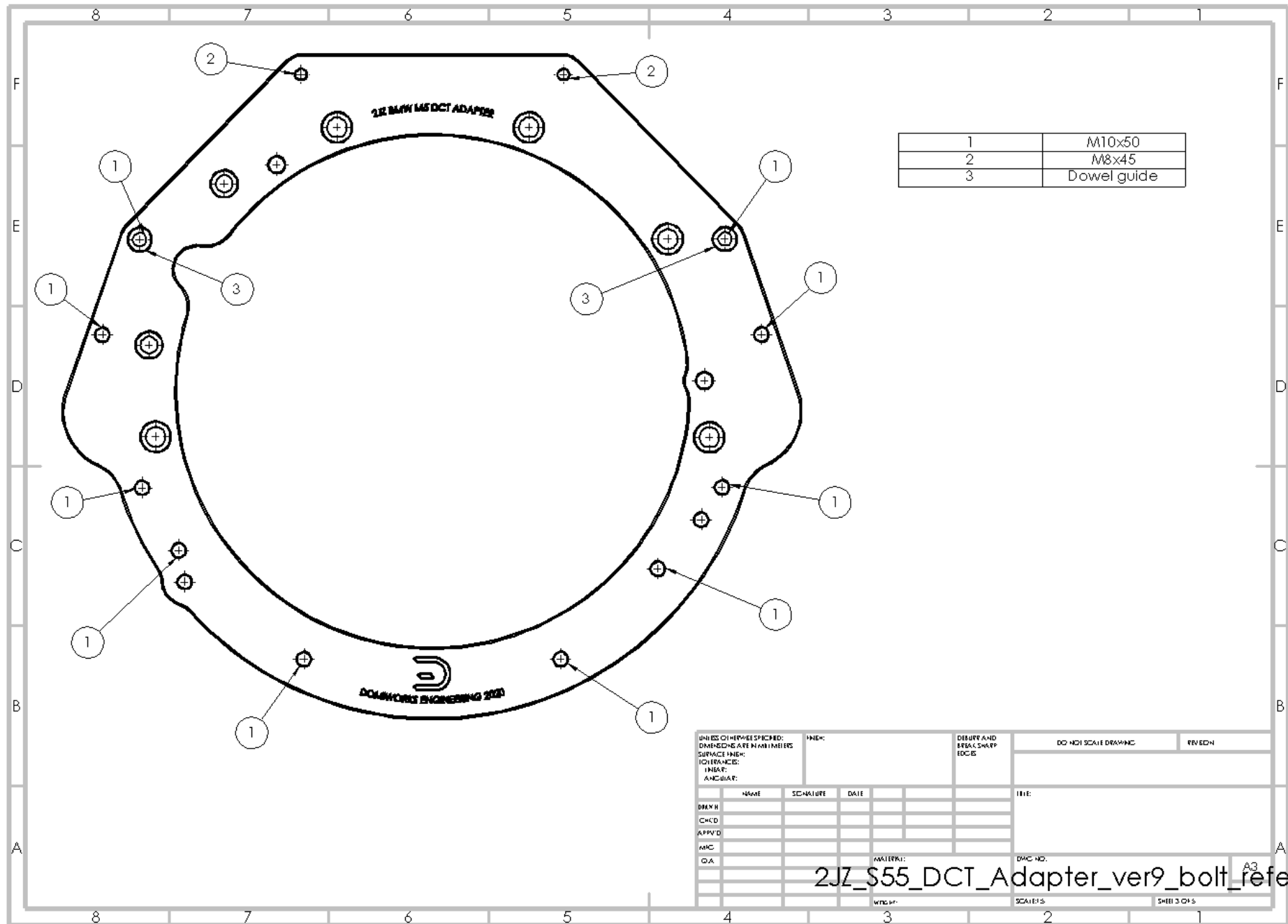
Guide the gearbox, aligning the input shaft with the DCT coupler hub and the bellhousing onto the dowel guides. The gearbox should not be forced into position. When mounted, insert bolts on their corresponding place. Tighten them down. See page 6, 7 and 8 for bolt reference.





2JZ_S55_DCT_Adapter_ver9_bolt_reference_g

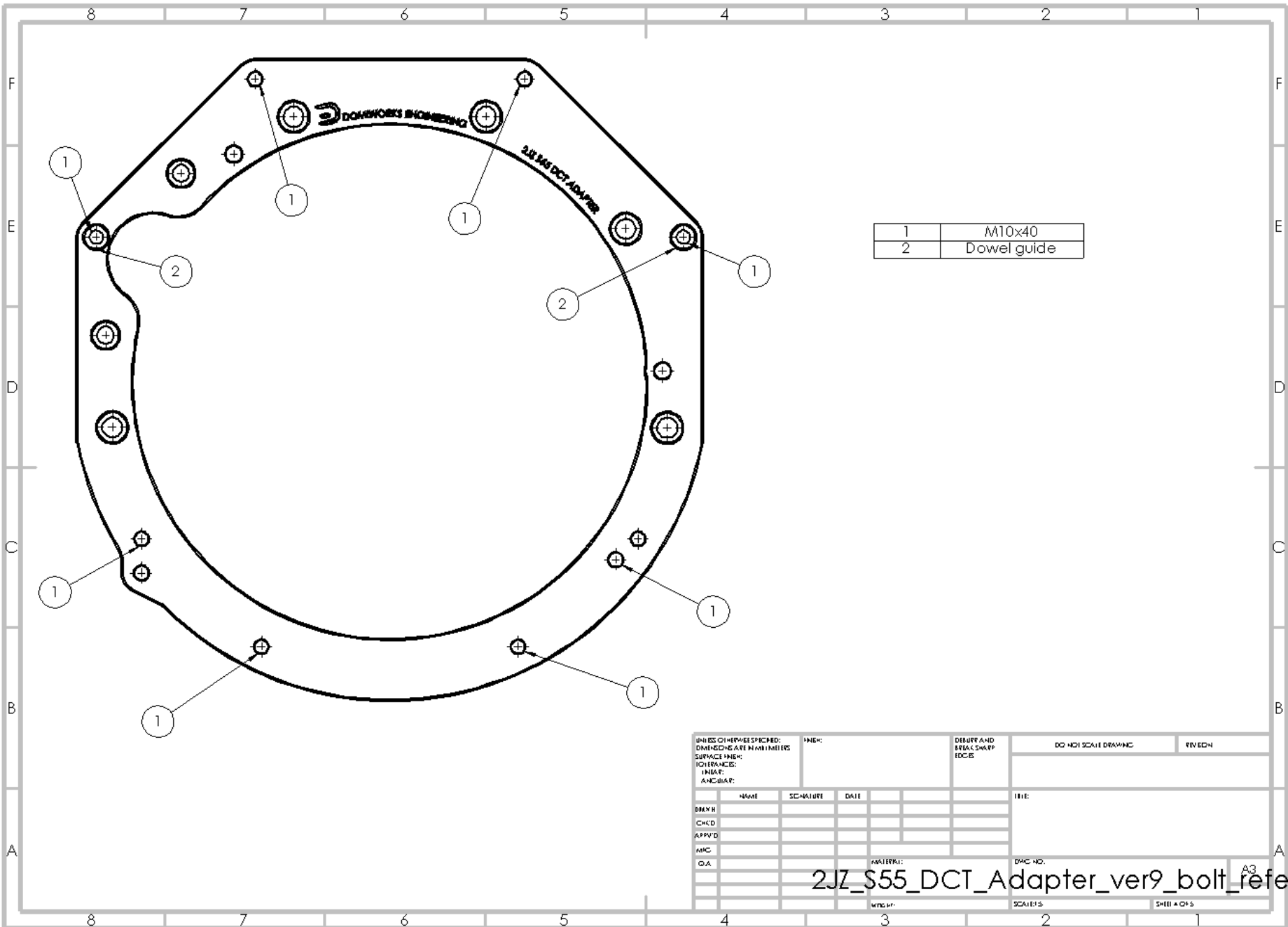




UNLESS OTHERWISE SPECIFIED: DIMENSIONS ARE IN MILLIMETERS SURFACE FINISH: TOLERANCES: FINISH: ANGLE:	FINISH:	DRURY AND BRACKEN EDG	DO NOT SCALE DRAWING	REVISED
NAME	SIGNATURE	DATE	TITLE	
DMYH				
CHKD				
APP'D				
AWC				
QA				
MATERIAL:			DAC NO.	
WEIGHT:			SCALE(S)	
			SHEET 3 OF 5	

2JZ_S55_DCT_Adapter_ver9_bolt_reference_g A3





2JZ_S55_DCT_Adapter_ver9_bolt_reference_03



