



DomiWorks Engineering AB

BMW N54/N55 Flexplate to 8HP70 Torque Converter Adapter Kit Installation Guideline

Version 1.0

2022-10-07



The information in this document is guidelines of how to install this kit to your engine. Failing to follow these guidelines may result in permanent damage to the included components, which DomiWorks Engineering cannot be held responsible. Always work calm and methodical and always wear appropriate safety equipment.

Contents

This kit includes the following items

6x offset weld inserts, 6x M10x20 bolts, 1x center guide

Requirements

N54/N55 Flexplate

Welding machine, MIG or TIG



1. Mount the center guide

Mount the center guide onto the center pin on the torque converter.



The weld-inserts are mounted in the six holes marked with the red arrow.



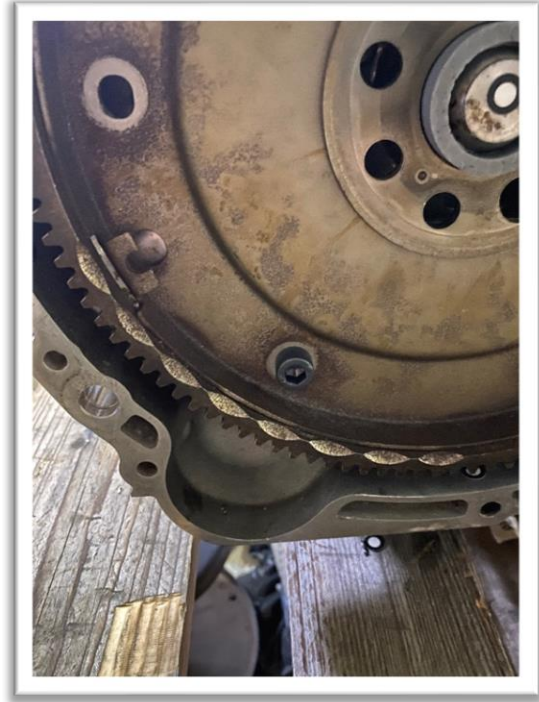
2. Mount the N54/N55 Flexplate

Mount the N54/N55 Flexplate onto the center guide.



3. Mount offset weld-inserts

Place the offset weld-inserts in the hole from the backside of the torque converter front plate meanwhile you mount a bolt. Do this for all 6 bolts. Torque the bolts with a ratchet, make sure they can't come loose. You just need to make sure they sit tight during welding.



4. Weld the inserts

Weld the inserts on both sides on the backside of the front plate of the 8HP70 Torque Converter. Do this for all 6 holes, let it cool before you remove the bolts.



You are now finished and ready to mount the N54/N55 flexplate to the 8HP70 Torque converter

