

Features

- 1,000-lb single-line or 2,000-lb double-line lift
- Trifecta system 115 Volt brake motor with triple brake system for instant stopping
- Worm gear reduction for positive load holding
- Rugged construction
- Low voltage 10' pendant control
- High-capacity cable drum
- Frictionless bearings

Applications

All My-te winches and hoists are designed for material handling usage only.

Pull rolling loads up to 25,000 lbs
Multiple-story construction site work
Long-lift applications
Tower erection and maintenance
Easily portable from job to job



Construction Features:

- Heavy-duty angle base drilled for six 1/2" bolts (9/16" mounting holes) with no welding required
- Fully sealed aluminum housings, with precision-cut gears, run in an oil bath
- Hardened steel worm and forged bronze worm gear holds load in position when stopped
- Stress-proof drum shaft
- Frictionless bearings
- 286:1 total reduction

Power:

- Universal 18,500 RPM reversible 1.25 HP brake motor (no-load speed)
- 15' power cord plugs into any 115 Volt AC grounded outlet
- 6 amp – No load
- 14 amp – Full load

Lifting Capacity:

- 1,000 lbs 1-3 Layers of 1/4" Cable (Up to 50')
- 850 lbs 4-6 Layers of 1/4" Cable (50-150')
- 600 lbs 7-9 Layers of 1/4" Cable (150-250')

Pulling Capacity–Rolling Load:

My-te winch-hoists are rated at the vertical lifting capacity. The chart below represents the weight of a rolling load that may be pulled up a given incline. This chart is for reference only. All capacities are reduced to allow for nominal friction factors.

Incline	Max Load Weight (lbs.)
• 0% – (0°)	25,000
• 10% – (6°)	8,000
• 20% – (11°)	4,000
• 40% – (22°)	2,100
• 60% – (31°)	1,500
• 80% – (39°)	1,300
• 100% – (45°)	1,100

Speeds:

- 59 RPM: No-load drum speed
- 30 FPM: No-load drum speed
- 25 FPM: 500 lbs – single-line lift
- 20 FPM: 1,000 lbs – single-line lift
- 10 FPM: 2,000 lbs – double-line lift

Note: All speeds are based on one layer of cable on drum.

Drum Storage:

Model No. 100AB

- 1/8" – 1,000' • 1/4" – 250'
- 3/16" – 450' • 5/16" – 150'

For best results, use the minimum amount of cable required for application. Maintain four wraps of cable on the drum at all times. Cable sold separately. Length and size must be specified at time of order.

Cable Strength:

- Safe working load is 20% of breaking strength
- Top-quality galvanized cable available in the following breaking strengths:
 - 1/8" – 2,000 lbs 1/4" – 7,000 lbs
 - 3/16" – 4,200 lbs 5/16" – 9,800 lbs

Duty Cycle:

- 25% – 15 min/hr when operating at full load

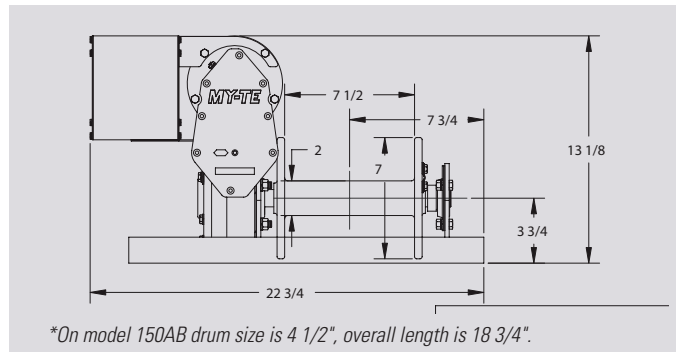
Shipping Weight: 76 lbs

Factory-Installed Options:

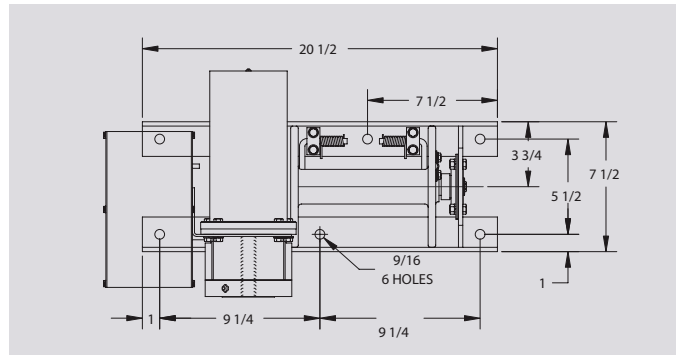
- 208 Volt
- Clutch
- Limit switch
- Hand crank
- Alternate drums
- Upside-down mounting
- Variable speed
- High speed gears

For custom design and application assistance of a My-te winch-hoist, see your My-te distributor or call My-te Products, Inc. (800) 840-9880. Visit us at www.myte.com

FRONT VIEW



TOP VIEW



SIDE VIEW

