

STRONG HOLD LASH BOND LINER & FAUX MINK LASH SYSTEM

PRODUCT SHEET

Silk Oil of Morocco's Strong Hold Lash Bond Liner uses Bidirectional film forming technology to create the ultimate hold for false lashes. This film-forming agent is known as PSA (Pressure Sensitive Adhesive). Pressure Sensitive Adhesives are a type of non-reactive adhesive which form a bond when light pressure is applied with a surface. PSA's also display elastic properties which enable re-sticking! This functionality allows you to re-apply or adjust your lash if you first apply it incorrectly. This revolutionary and remarkable film-forming capacity toward both surfaces ensures a unique and reliable bond between the liner and lashes

KEY INGREDIENTS

- Arginine
- Calendula Officinalis
- Butylene Glycol
- PVP

INGREDIENTS

Aqua, Polyvinyl Alcohol, Propylene Glycol, Ethylhexylglycerin, Butylene Glycol, PEG-3 SORBITAN OLEATE, STEARETH-21, Dimethicone, Octyldodecanol, PVP, Sorbitan Sesquioleate, CALENDULA OFFICINALIS, SALVIA OFFICINALIS, Arginine, CL77266 (D&C Black 2)

DIRECTIONS OF USE

- Step 1:** Ensure your eye area is clean and free from oils and creams.
- Step 2:** Shake Silk Lash Liner Adhesive well before use and prepare your Silk Faux Mink Lashes by trimming them to size. It's best to trim your Silk Faux Mink Lashes from the outside of the band as trimming from the centre can compromise how the lash curve fits. This step is important as if the lash band is too large it can lift more easily.
- Step 3:** Apply a generous amount (2-3 layers) of Silk Lash Liner Adhesive by drawing a line along the eye's lash line. Make sure you are thorough and don't miss any spots to ensure the edge of the Silk Faux Mink Lash band bonds securely. You may choose to also apply additional Silk Lash Liner Adhesive to the actual Silk Faux Mink Lash band itself for extra hold. Don't forget to cover the lash band tips!
- Step 4:** Wait 30 seconds for the Silk Lash Liner Adhesive to set and become tacky before attaching the Silk Faux Mink Lash.
- Step 5:** Press your Silk Faux Mink Lash band into place along the Silk Lash Liner Adhesive.
- Removal:** Carefully peel off Silk Faux Mink Lashes after use and store safely for reuse. When removing, gently lift the lash band off your skin from the inner corner, never pull on the lashes to remove. Then simply use a cleanser such as Silk Oil of Morocco's Gel Cleansing Facial Wash to remove the Silk Strong Hold Lash Bond Liner. You can also use makeup remover or wipes

EXPIRY DATE/SHELF LIFE

12 months after opening. 24 months unopened

BENEFITS

- No glue, no magnets, no mess with zero dry time
- Fast & fuss-free lash application
- Bidirectional film forming technology creates a re-stickable bond, making readjustment easy
- 100% Vegan & Cruelty Free
- Alcohol, fragrance & essential oil free
- Wind and water resistant strong hold
- Precision felt tip liner for easy lining
- Store & re-use your lashes multiple times in the Silk Faux Mink Lash gold compact case
- Hand-tied, ultra-lightweight bendable lash band for easy & seamless application

FREE FROM

- Animal testing
- Fragrance
- Alcohol
- Glue

COMPLEMENTARY PRODUCTS

All Silk Cosmetic Products

PACKAGING MATERIAL

Recyclable



CRUELTY FREE



ALCOHOL FREE



VEGAN FRIENDLY



STRONG HOLD LASH BOND LINER & FAUX MINK LASH SYSTEM

PRODUCT SHEET

FAQS

HOW MANY TIMES CAN I USE MY LASHES? Strip lashes are designed to be reused multiple times as long as the wearer is careful when removing, stores correctly and cleans the lash band before re-using

CAN I CUT THE LASHES TO A SMALLER SIZE? Yes absolutely! We actually recommend doing this to ensure the lash band fits your personal eye shape and size. This will prevent the lash lifting

IS THE LINER HARD TO APPLY? Honestly, it's as easy as drawing a line. Many of our customers have found this the easiest lash application method they've tried to date! If you aren't confident in drawing black eyeliner with a pen, the Clear Lash Bond Liner is perfect for you! The clear film dries transparent so you can't see if you mess up!

ARE SILK LASHES VEGAN FRIENDLY? They sure are! Silk Faux Mink Lashes are made from a synthetic fibre ensuring they are 100% Vegan and Cruelty Free. Our Strong Hold Lash Bond Liners are also Vegan and Cruelty Free formulas

WHAT COLOUR IS THE LINER? We have both black and clear options available for both liner and liner-free looks

HOW LONG WILL THE LINER LAST? Firstly, make sure you always put the lid back on, as this will avoid the pen drying out and it lasting longer. It's hard to give an exact number of uses as it really depends how generously each user applies... but this liner has in the past lasted for up to 100 uses

MOST NATURAL LASH STYLES? Paris, Tokyo, Santorini, Vienna, London

MOST DRAMATIC LASH STYLES? Dubai, Vegas, LA, Mykonos, Barcelona, Cairo

WISPY LASH STYLES? LA, Dubai, Mykonos, Barcelona, Paris, Vienna

KEY INGREDIENTS

Arginine - A semi-essential amino acid that is one of the primary building blocks of hair keratin and skin collagen. It's a natural moisturizing factor, a skin hydrator and might also help to speed up wound healing. Arginine usually has a positive charge (cationic) that makes it substantive to skin and hair (those are more negatively charged surfaces) and an excellent film former. Thanks to the positive charge, it also creates a complex with AHAs (AHAs like to lose a hydrogen ion and be negatively charged, so the positive and the negative ions attract each other) that causes a "time-release AHA effect" and reduces the irritation associated with AHAs.

Calendula Officinalis - The extract coming from the popular garden plant Calendula or Marigold. It's used traditionally as a skin-repairing and soothing plant extract.

Butylene Glycol - Butylene glycol, or let's just call it BG, is a multi-tasking colorless, syrupy liquid. It's a great pick for creating a nice feeling product. BG's main job is usually to be a solvent for the other ingredients. Other tasks include helping the product to absorb faster and deeper into the skin (penetration enhancer), making the product spread nicely over the skin (slip agent), and attracting water (humectant) into the skin

PVP - These three letters stand for Poly Vinyl Pyrrolidone, a big molecule created from repeated units of Vinyl Pyrrolidone, aka VP. Its main thing is being an important film former. It was the first synthetic polymer introduced as a hair fixative in the 1950s instead of insect-derived Shellac. So PVP likes to attach itself to surfaces such as the hair and the skin and forms a nice, thin, even film there. The film is useful for holding a hairstyle or extending the wear of color cosmetics and sunscreens.



WARNING: Do not use Silk Adhesive Lash Liner if there're wounds on the skin. Stop using the product if allergic reaction occurs. Cap the liner in time to prevent the tip dry out. Keep the product away from children.



UNIT 2, 13 REDCLIFFE GARDENS DRIVE, CLONTARF 4019 QLD AUSTRALIA
PHONE: AUS +61(0)7 3880 3380

WWW.SILKLOFAMOROCCO.COM @SILKLOFAMOROCCO

PAGE: 2/4
REVISION: 1
ISSUE DATE: 08/07/20



STRONG FAUX MINK LASH STYLES



LONDON - FMLLON
Petite, criss-crossed, feathery, lashes with medium volume

HAND TIED, VEGAN



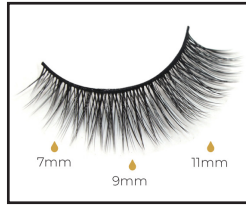
BARCELONA - FMLBAR
Wispy, feathered, criss-crossed lashes with full natural looking volume

HAND TIED, VEGAN



SANTORINI-FMLSAN
Petite, classic lashes with medium natural looking volume

HAND TIED, VEGAN



MYKONOS - FMLMYK
Wispy, feathered lashes with medium volume

HAND TIED, VEGAN



TOKYO - FMLTOK
Classic, petite natural looking lashes with light-medium volume

HAND TIED, VEGAN



DUBAI - FMLDUB
Feathery, full body long lashes with full volume for glam make-up looks

HAND TIED, VEGAN



PARIS - FMLPAR
Wispy, feathery, criss-crossed lashes with full natural looking volume

HAND TIED, VEGAN



LA - FMLLA
Wispy, feathery, full body long lashes with full volume

HAND TIED, VEGAN



VENICE - FMLVEN
Layered, full-body, natural lashes with medium length and even volume

HAND TIED, VEGAN



CAIRO - FMLCAI
Bold, layered, slightly tapered, cat-eye, medium length lashes with full, even volume

HAND TIED, VEGAN



VIENNA - FMLVIE
Wispy, layered lashes with medium natural looking volume

HAND TIED, VEGAN



VEGAS - FMLMIA
Tapered, cat-eyed, bold lashes with full volume

HAND TIED, VEGAN



FAUX MINK LASH STYLES

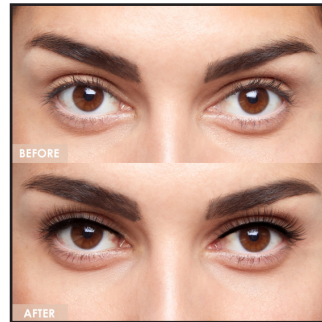
BEFORE & AFTER



LONDON



SANTORINI



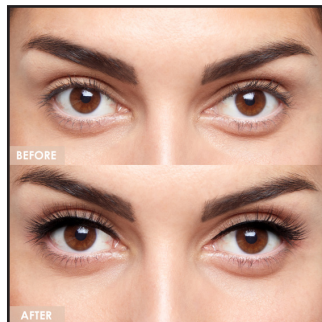
TOKYO



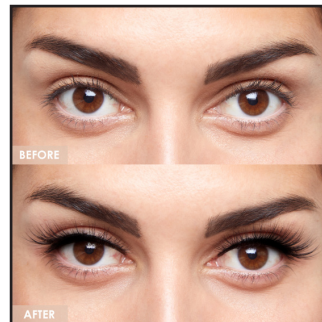
PARIS



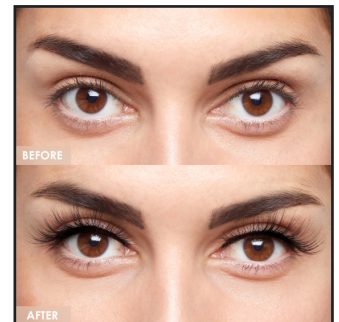
VENICE



VIENNA



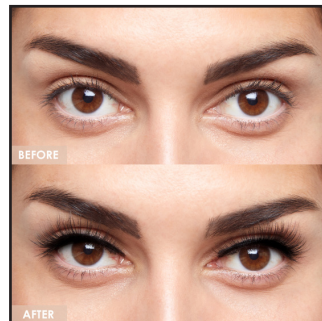
BARCELONA



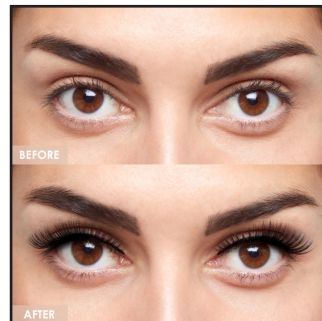
MYKONOS



DUBAI



LA



CAIRO



VEGAS

