



ARGAN STRIP/INDIVIDUAL LASHES

PRODUCT SHEET

INGREDIENTS

Aqua, Natural Rubber Latex, Methylparaben, Carbomer, Cellulose Gum, Ammonium Hydroxide. May contain Iron Oxides.

DIRECTIONS OF USE

1. If needed, trim strip lash (from outer edge) to fit your eye.
2. Apply glue to lash band and wait 30-60 seconds.
3. Apply lash along natural lash line.
4. Allow glue to dry.
5. Carefully apply Silk Oil of Morocco Argan Oil Defining Mascara for a seamless finish.

REMOVAL

Gently peel off lash strip, starting at the outer corner. Remove excess adhesive from lash band and place lashes back onto the tray for future use. WARNING: If glue gets into the eyes wash out immediately with water.

KEY FEATURES

- 100% human hair
- Vegan friendly
- Hand tied for a more natural finish
- Seamless invisible band
- Professional quality
- Durable and re-useable (10 – 15 uses)
- Easy to apply and remove
- Instantly enhances eye lash length and fullness
- Can be used to create both dramatic/eye-catching and naturally enhanced looks
- 12 Styles including Top, Bottom & Individual Lashes
- Buildable



PACKAGING MATERIAL

Recyclable



MADE IN USA



UNIT 2, 13 REDCLIFFE GARDENS DRIVE, CLONTARF 4019 QLD AUSTRALIA
PHONE: AUS +61(0)7 3880 3380

WWW.SILKOOILOFMOROCCO.COM @SILKOOILOFMOROCCO

PAGE: 1/2
REVISION: 3
ISSUE DATE:01/05/20





ALLURE

OMEL747M

If you're looking for an eye accentuating lash with a natural finish, look no further. Created to add subtle length and subtle thickness for any eye shape, the Allure is a must-have essential for any lash lover. This lightweight false includes the finest Silk 100% Human Hair for a subtle glam all-day/night wear.



CLEOPATRA

OMEL119

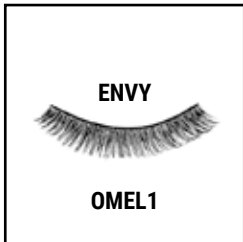
Cleopatra that's who you will look like when you wear these dramatic, bold, EXTRA long Silk Lashes. They are the Ultimate Glamour you WILL stand out in the crowd with these!



DESIRE

OMELWISPY

You will be desired when you wear these Lashes... a feathery set of layered Wispy false lashes perfect for adding drama length giving you an on point Glamorous desired look!



ENVY

OMEL1

Yes... you will be Envid with these extra dark, extra thick but light weight Envious luscious lashes. Each lash is individually tapered side by side to give a thicker root and feathered natural ends.



GODDESS

OMEL747L

Meet the Goddess, our Hollywood Glam Lash! Be the leading lady in any role you might play with this gorgeous lash. Wispy and feathery but natural and extra long. These lashes are blended for a more natural look and feel full of glamour and movie star potential! Perfect for any occasion or makeup look. Wispy natural extra Long.



LATINA

OMEL138

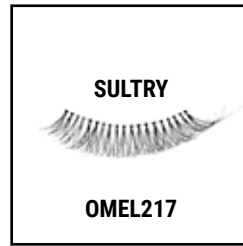
You will be the Latina of the day or night with these extra dark long, individually tapered & individually graduated Lashes to give your eyes an open fuller wow factor look.



SALSA

OMEL48

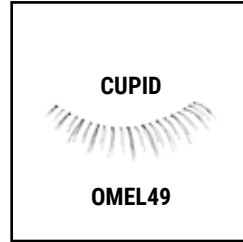
If you've ever desired that gorgeous doe-eyed look, then you must try our Salsa lashes. Uniquely blended with 8 thicker lashes per a lash surrounded by thinner lashes either side. All one length, tapered on the inner edge and only flaring out at the ends with a slight curl. Salsa is without a doubt bat-worthy and suitable for all eye shapes.



SULTRY

OMEL217

You will love these Sultry look lashes, dramatic, bold, long, light weight, extra dark at the roots looking with feathered ends for a full lash look. These lashes definitely don't need stacking! The curl on the ends of the lash helps to open your eyes for a fuller look.



CUPID

OMEL49

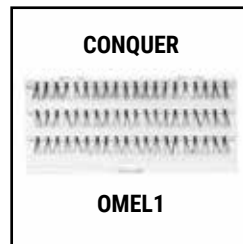
Yes these are bottom lashes! These fanned-out lower lashes add immediate length and volume, bestowing just the right touch of glamour and sophistication. Light, airy, and the perfect addition to any makeup look! (2 choices of bottom lashes these and a fuller version see Glamazon!)



GLAMAZON

OMEL501

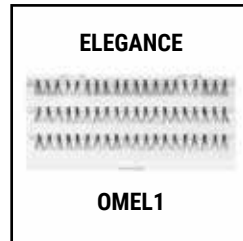
Yes these are bottom lashes! These fanned-out lower lashes add immediate length and volume, bestowing just the right touch of glamour and sophistication. Light, airy, and the perfect addition to any makeup look! (2 choices of bottom lashes these and a lighter version called Cupid)



CONQUER

OMEL1

Meet the Goddess, our Hollywood Glam Lash! Be the leading lady in any role you might play with this gorgeous lash. Wispy and feathery but natural and extra long. These lashes are blended for a more natural look and feel full of glamour and movie star potential! Perfect for any occasion or makeup look. Wispy natural extra Long.



ELEGANCE

OMEL1

You will be the Latina of the day or night with these extra dark long, individually tapered & individually graduated Lashes to give your eyes an open fuller wow factor look.

WARNING: Flammable product. keep out of reach of children. keep in a cool dry area & away from heat, flame & sparks



UNIT 2, 13 REDCLIFFE GARDENS DRIVE, CLONTARF 4019 QLD AUSTRALIA
PHONE: AUS +61(0)7 3880 3380

WWW.SILKCOILOFMOROCCO.COM @SILKCOILOFMOROCCO

PAGE: 2/2
REVISION: 3
ISSUE DATE: 01/05/20

