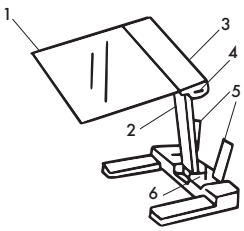


FULL-PAGE READING MAGNIFIER WITH LED LIGHT
MANUAL

READ THE INSTRUCTIONS BEFORE USE AND KEEP FOR FUTURE REFERENCE



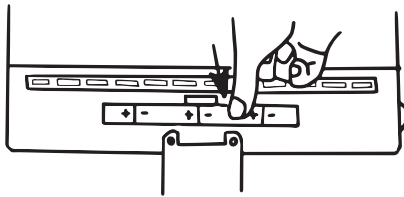
PRODUCT DESCRIPTION

- 1....ACRYLIC MAGIFIER
- 2....SWIVEL ARM
- 3....BATTERY COMPARTMENT
- 4....ON/OFF SWITCH AND ADJUSTABLE LED LIGHT DIMMER
- 5....ADJUSTABLE SUPPORT (X2)
- 6....CLIPS

BATTERY INSTALLATION

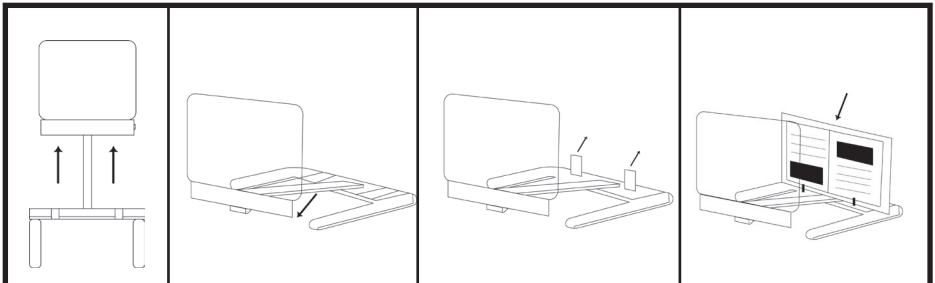
BATTERIES REQUIRED: 4 X 1.5V AA (NOT INCLUDED)
BEFORE REPLACING THE BATTERIES MAKE SURE THE SWITCH IS IN THE "OFF" POSITION.
(MAKE SURE TO TURN ALL THE WAY TO THE <OFF POSITION>)

OPEN THE BATTERY COMPARTMENT LOCATED ON THE BACK OF THE MAGNIFIER. PAYING ATTENTION TO THE POLARITY INDICATED INSIDE. POSITION 2 BATTERIES ON THE LEFT. ONE BATTERY ON THE FAR RIGHT THEN THE LAST IN THE MIDDLE. SEE THE ILLUSTRATION.



BACK OF THE MAGNIFIER

INSTALLATION



LAY ON FLAT STABLE SURFACE

LOWER THE MAGNIFYING GLASS AS SHOWN IN ILLUSTRATION

LIFT THE 2 SUPPORTS & ADJUST THEM TO YOUR LIKING

PLACE BOOK/TABLET/ MAGAZINE BETWEEN THE SUPPORTS & CLIPS TO HOLD IT IN PLACE

NOTE: CLIPS ARE ADJUSTABLE. SIMPLY REMOVE THEM AND INSERT THEM INTO ONE OF THE 4 SLOTS DEPENDING ON THE THICKNESS OF THE BOOK/TABLET/MAGAZINE, ECT.

LED LIGHTS

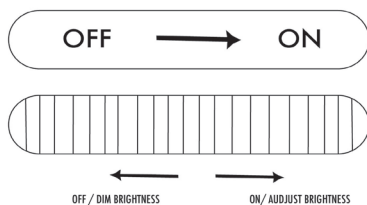
TURN ON AND INCREASE BRIGHTNESS

TO TURN ON LED LIGHTS: TURN THE DIAL UNTIL HEAR A CLICK.

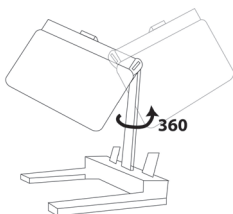
TURN OFF AND DECREASE BRIGHTNESS

SLOWLY TURN THE DIAL TO THE OFF POSITION TO DECREASE THE BRIGHTNESS.

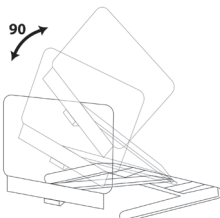
KEEP TURNING THE SWITCH UNTILL YOU HEAR A CLICK TO TURN OFF.



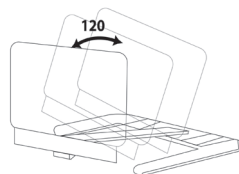
ROTATION



UP & DOWN



ADJUSTABLE HEAD



ATTENTION

- DO NOT LEAVE THE MAGNIFIER EXPOSED TO DIRECT SUN LIGHT!
- DO NOT OOK DIRECTLY AT THE SUN THROUGH MAGNIFYING GLASSES OR WITH THE NAKED EYE TO AVOID INJURY!
- NO NOT SHINE LIGHT BEAM DIRECTLY INTO EYES!
- DO NOT CLEAN OR IMMERSE THE LAMP IN LIQUID!
- THIS IS NOT A TOY. KEEP OUT THE REACH OF CHILDERN!
- KEEP AWAY FROM HEAT SOURCES!
- HANDLE THE PRODUCT WITH CARE!
- A BLOW, SHOCK OR FALL, EVEN FROM A LOW HEIGHT CAN DAMAGE IT.

BATTERY WARNINGS

- IF THE MAGNIFYING LED LIGHTS IS NOT USED FOR A LONG TIME, OR IF THE LIGHT IS DIM: REMOVE THE BATTERIES AND REPLACE THEM.
- ALWAYS USE THE BATTERIES OF THE RECOMMENDED OR EQUIVALENT TYPE.
- RESPECT THE POLARITY OF THE BATTERIES.
- DO NOT MIX NEW AND USED BATTERIES.
- DO NOT MIX ALKALINE REGULAR (CARBON ZINC) AND RECHARGEABLE (NICKEL HYDRIDE) BATTERIES.
- MAKE SURE THAT LIGHT IS ALL THW WAY OFF TO AVOID BATTERY DRAINAGE.

CLEANING & MAINTENANCE

- USE A SOFT CLOTH TO CLEAN THE LEANS. (MICRO-FIBER CLOTH)
- DO NOT USE ALCOHOL OR CORROSIVE PRODUCTS!
- DO NOT POUR OR SUBMERGE THE MAGNIFYING GLASS INTO WATER.

