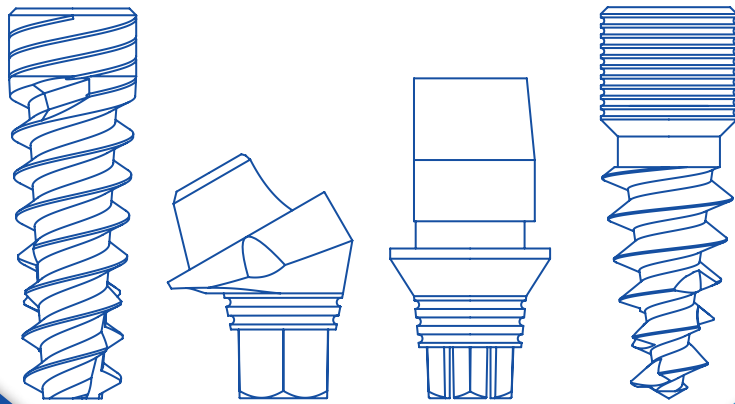


PRODUCT
CATALOG

BioLine®

Dental Implants Series



THE ART OF SIMPLICITY

About BioLine	3
R&D departments	4
Quality system	5
Labeling & packaging	6
Biofix surface	7
Case report	8 - 9
Drilling protocol	10
BioGuide	11
Internal hex implants	12 - 25
The tilt concept	26 - 36
Internal hex prosthetics	37 - 49
Conical connection dental implants	50 - 53
Conical connection prosthetic's	54 - 57
Instruments & drills	58 - 61
Surgical kits	62 - 66
Digital components	67 - 68

About BioLine



The art of simplicity, is our guiding line

At Bioline Dental Implants, we address the needs of dental implantology's, sharing our experience and technologies, utilize experts and invest in research, training and education. All this results in the art of simplicity solutions that simplify dental implantology procedures and deliver proven clinical long-term success.

We maximize our experience and innovative technologies

We Maximize our experience and technologies to ensure that our products offer the best high-end clinical solution. From the beginning of our activity in 2005, we have been focused on the development, design and manufacture of dental implants and very accurate prosthetic parts. Our state of the art manufacturing facility, which is operational 24/7, includes a dedicated team of designer's clinical consultant, cnc operators and Qa department to ensure the highest possible standards and quality of our products enable us to grant a lifetime warranty for our dental implants.

We offer high quality, simple-to-use product lines

We have been focused on state of the art simple-strong-accurate implant technology by developing implants based on two connections principals - an internal hex connection and a conical hex connection. Created on a switching -platform that fit all possible prosthetic system, they allow dentists to use a single restoration line for each implant platform. Furthermore, the development of all our products –implants, abutments and surgical tools – takes existing systems into account in order to make the procedure simple and minimize dental surgent period of learning. As a resolute of this method, our surgical tool kit is compatible with all products and includes everything from basic surgical tools to advanced instruments needed in maximum efficiency and agronomic – economic thinking. And in addition to make work processes short and simple, our products have an overall implant clinical success rate of 98.7% reported and documented according to our detailed recommended instruction for use.

We invest in research and development constantly

Our R&D teams collaborate closely with an international panel of experts who have extensive clinical and academic knowledge. We also invest in new technologies and encourage innovative thinking, clinical trials, studies. This investment of research and development ensures that our products are constantly aligned with market needs and constant improvement's, and that we are able to develop clever, easy and simple to use, best quality products.

We Invest in Training and Education of Students and Our Customers

We firmly believe that sharing our knowhow, and experience is very important to ensure successful and effective implantology methods and procedures. we provide hands on courses around the world, where we train graduate students and our customers to be as professional and educated\updated in the latest dental implantology procedures and innovative methods developed by our team of experts. We Adopt and Implement Digital Means and Technologies into The Dental World We embrace the technological changes involved in the digitalization of the dental world in order to support the present and future needs of our customers. Consequently, our digital CAD/CAM line offers a wide rangeof restoration products for our two implant connections. Additionally, our Guided Surgery Tool Kit supports guided surgery methods and enables dentists to select the software to use when planning surgeries, making their work easier and simpler.

We are environment friendly

We are very committed to environment keeping and take maximum measures to avoid using harmful and non-green materials in production lines we also encourage recycling of packing materials and prefer suppliers respecting environment. We encourage contributing to global community, We at Bioline participate in local-global events of contributing to community in developing countries and support pro bono contributor's by giving free products to aid needing communities.



Engineering cad-cam

Our company specializes in designing computer-aided dental elements. The planning department engineers have extensive experience in many areas:

Computerized mechanical design.

- Strength of materials.
- Simulation of assemblies and subassemblies.
- Metallurgy.

Human engineering and product planning to use a simple, stable, and comfortable design for the doctor and the patient. Dental product design requires a comprehensive scientific thinking concerning mechanical strength of the product and the ability to ensure the survival during transplantation, as well as the creation of a precise & strong connection and resistant to vibration and continuous wear. We are working on the continuous development of new products and improving existing products to ensure total quality so as to assure long-term success in improving the patient's quality of life.



State of the art accurate machining

Our company has a modern factory with high quality computerized machines, very secure, continuous, and repeatable accuracy.

Manufacturing operations based on a computerized manufacturing system and program management and monitoring of the different jobs and a very strict production process, controlled by skilled workers with knowledge and experience.



Quality inspection

Our company manufactures medical-dental products during application and adaptation to the most stringent workmanship standards in the industry. The company's products are tested in the production process and in the transition between the various production stages by qualified inspectors in accordance with the specifications defined in the production procedures. Our company is certified to ISO 13485-2012 and carries the CE-1023 icon. Our company is working constantly to improve the quality policy and ensuring the maximum quality level of the company's products, all to ensure excellent products and customer satisfaction.



Clean room packing

The packaging process is done in a clean room to ensure a purification level specified by the medical device for dental implants. The clean room environment ensures hygiene of the product during the sterile packaging and ensuring a long shelf life without any possible contamination of the product. This clean room environment is suitable for international labor standards defined in the CE standard.

At Bioline, quality management is an integral part of the way we do business. Quality is one of our company's core values. We believe that in order to provide quality products and service to our customers, we must think-act-implement quality at all times. Our team is comprised of highly professional and qualified personnel who all contribute, each with their own expertise, to cooperatively create the high standards we uphold. Integrity and transparency are an integral part of our organizational culture, enabling us to offer products from the highest of standards in the dental market. Bioline dental Implant in-house manufacturing facilities allow it to efficiently produce commercial quantities of implants and accurate prosthetic parts to meet US, EU, Rus, India Mexico and many other countries requirements. We have a state of the art production facility that is dedicated to providing high quality products. Each and every one of our products designed and manufactured to meet the highest level of standards worldwide and we are regulatory approved by a number of leading notify bodies.

International Regulations-Certifications

As an advanced medical certified manufacturing facility, Bioline is fully compliance with all European directive for Medical Devise EN 93/42/EEC and ISO 13485:2016. Our factory is inspected on a regular basis by European Notified Body to ensure we are comply the requirements of the Standards.

Bioline is authorized to operate within USA and the EEA and all regulating bodies have given their approval to Bioline. We have invested a significant amount of resources to ensure that we maintain high quality in our manufacturing processes.

Bioline had gain and work according to the following standards:

CE marking - Certificate Number MED 31574

EN ISO 13485:2016 – Certificate Number IL53646H.

FDA listing of all prosthetic part and surgical tools

RUS – Russian regulation and marketing certificate

Free sale & Declarations of Conformity for medical device products are available

Lifetime Warranty Policy

Bioline has complete confidence in the quality and long-term success of the products we manufacture and market, therefor we offer a lifetime guarantee to all of our products.

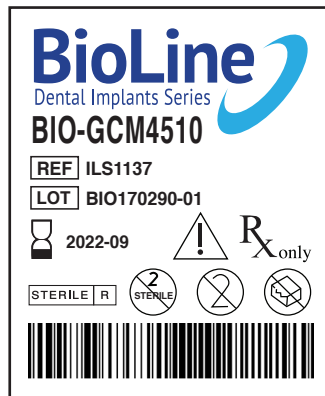
provided they are used properly and in accordance with our instructions for use and maintenance.



Labeling & packaging

State of the art packaging, easy to use & to handle during the time of surgery.
clear warranty labels contain the following symbols:

- BIO-GCM4510** ———• Product name + sizes
- REF** ILS1137
LOT BIO170290-01 } ———• REF + LOT codes
- 2022-09 ———• expiration date
- STERILE** **R** ———• this product is sterilized by gamma radiation
- Do not Double sterilize
- for single use only



What is osseointegration?

Osseointegration, defined as a direct structural and functional connection between ordered, living bone and the surface of a load-carrying implant, is critical for implant stability, and is considered a prerequisite for implant loading and long-term clinical success of endosseous dental implants. The implant–tissue interface is an extremely dynamic region of interaction. This complex interaction involves not only biomaterial and biocompatibility issues but also alteration of mechanical environment. The processes of osseointegration involve an initial interlocking between alveolar bone and the implant body, and later, biological fixation through continuous bone apposition and remodeling toward the implant. The process itself is quite complex and there are many factors that influence the formation and maintenance of bone at the implant surface.

The usage & advantage of calcium phosphate:

Calcium phosphate (CaP) biomaterials currently in use for bone repair, substitution, augmentation, and regeneration include hydroxyapatite of synthetic or biologic origin, beta-tricalcium phosphate (β -TCP) and biphasic calcium phosphate. They are available as granules, porous blocks, CaP/polymer composites, cements, and as coatings on orthopedic and dental implants. Experimental CaP biomaterials include CO₃²⁻- and F⁻-substituted apatites, Mg- and Zn-substituted β TCP, and CaP glasses.

Biofix[®]: Biological Surface Treatment concept:

The use of a granular, multi-phase calcium phosphate abrasive such as **Biofix[®]** Apatitic Abrasive has been recognized and Accepted for many years in the dental, orthopedic, and spinal markets.

Biofix[®] Apatitic Abrasive provides a textured surface to either increase the surface area that comes in contact with the bone or as a surface preparation prior to the application of a coating such as hydroxyapatite or porous titanium.

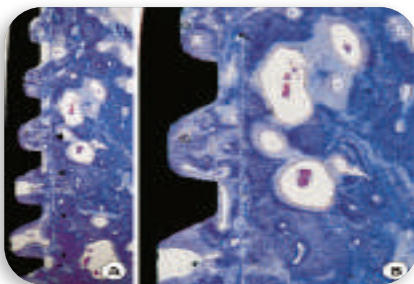
Conventional abrasive blasting techniques that utilize alumina or silicon carbide always leave residual abrasive as a contaminant embedded in the implant surface.

Biofix[®] Apatitic Abrasive will provide a residue free surface after passivation.

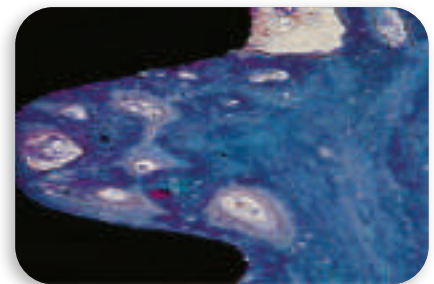
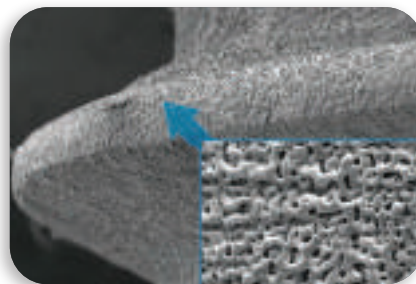
The reference literature below links to research studies which discuss sandblasted and acid etched (SLA) surface treated implants—specifically with the use of Bionline's **Biofix[®]** Apatitic Abrasive.

Our guiding line in **Biofix[®]** formula is to avoid possible metal contamination's caused by remains of abrasive materials sprayed on the titanium implant during surface treatment creation.

Biofix[®] treatment provides the cleanest and most effective result to be monitored for many years to come.



Rotational implants group, 4-week healing period (H&E: A, $\times 40$; B, $\times 100$).

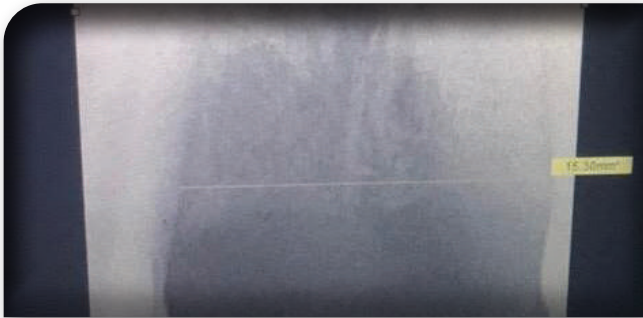


References:

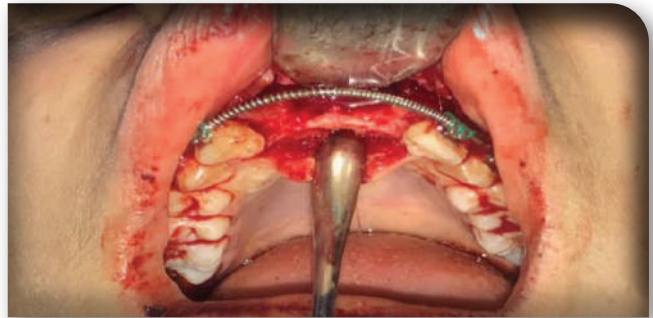
<https://www.ncbi.nlm.nih.gov/pmc/articles/PMC3602536/>
<https://www.ncbi.nlm.nih.gov/pmc/articles/PMC3596629/>
http://www.jaypeejournals.com/eJournals/ShowText.aspx?ID=7317&Type=FREE&TYP=TOP&IN=_eJournals/images/JPLGO.gif&IID=555&isPDF=YES

ESTHETIC ZONE RESTORATION USING SPIRAL DENTAL IMPLANTS

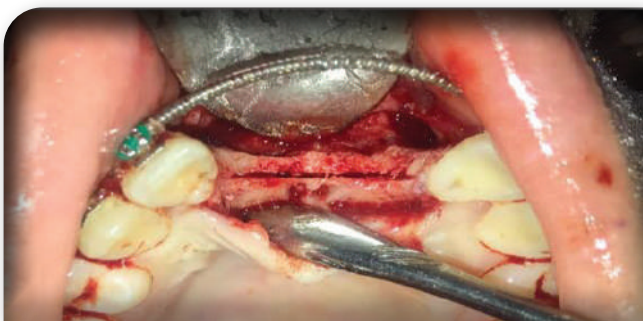
By Prof. Dr Divye Malhotra



1. Pre-Op



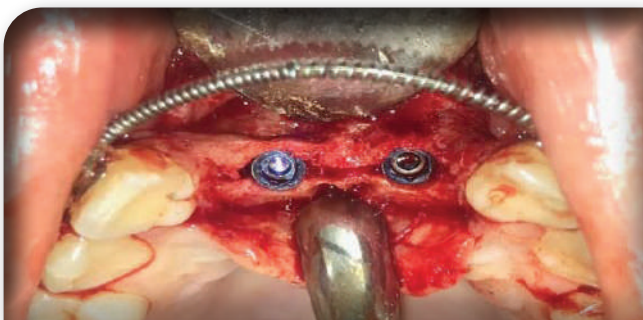
2. Flap Opening



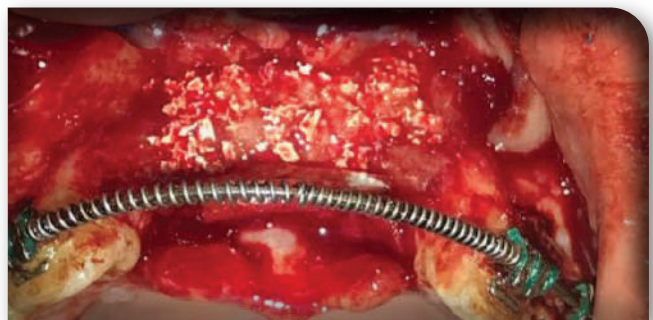
3. Osteotomy site preparation



4. Osteotomy site preparation

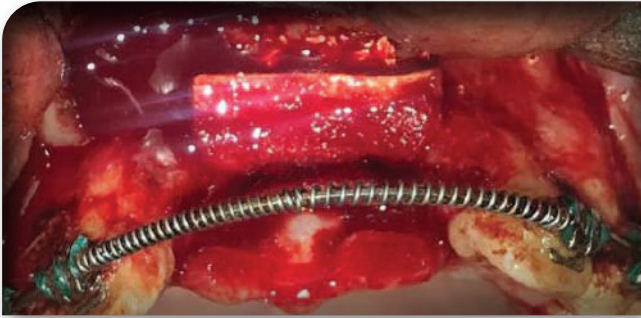


5. Implants placement's



6. Bone grafting + membrane

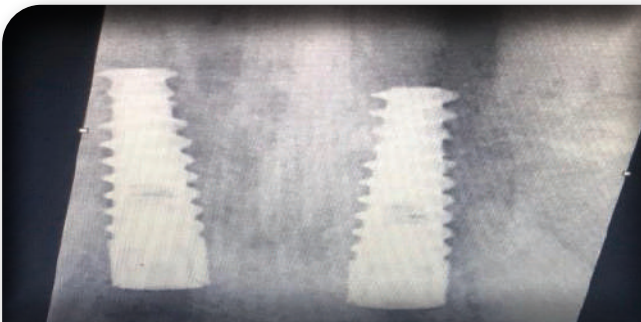
Case report



7. Bone grafting + membrane



8. suturing



9. X ray removed after 3 months – great integration



10. Abutments placement's



11. Final results

**CLINICAL & BIOLOGICAL, INITIAL + LONG TERM STABILITY,
FAST HEALING, AND HIGH RATE OF OSSEOINTEGRATION
LEAD BY Biofix[®] FORMULA**

The recommendations presented in this drilling Protocol, based on long experience of specialists in the world. However it is important to examine each case on its merits based on the physician's ability to perform the procedure, and the state of the patient's jaw implant transpires with the beginning and there may be changes according to the situation.

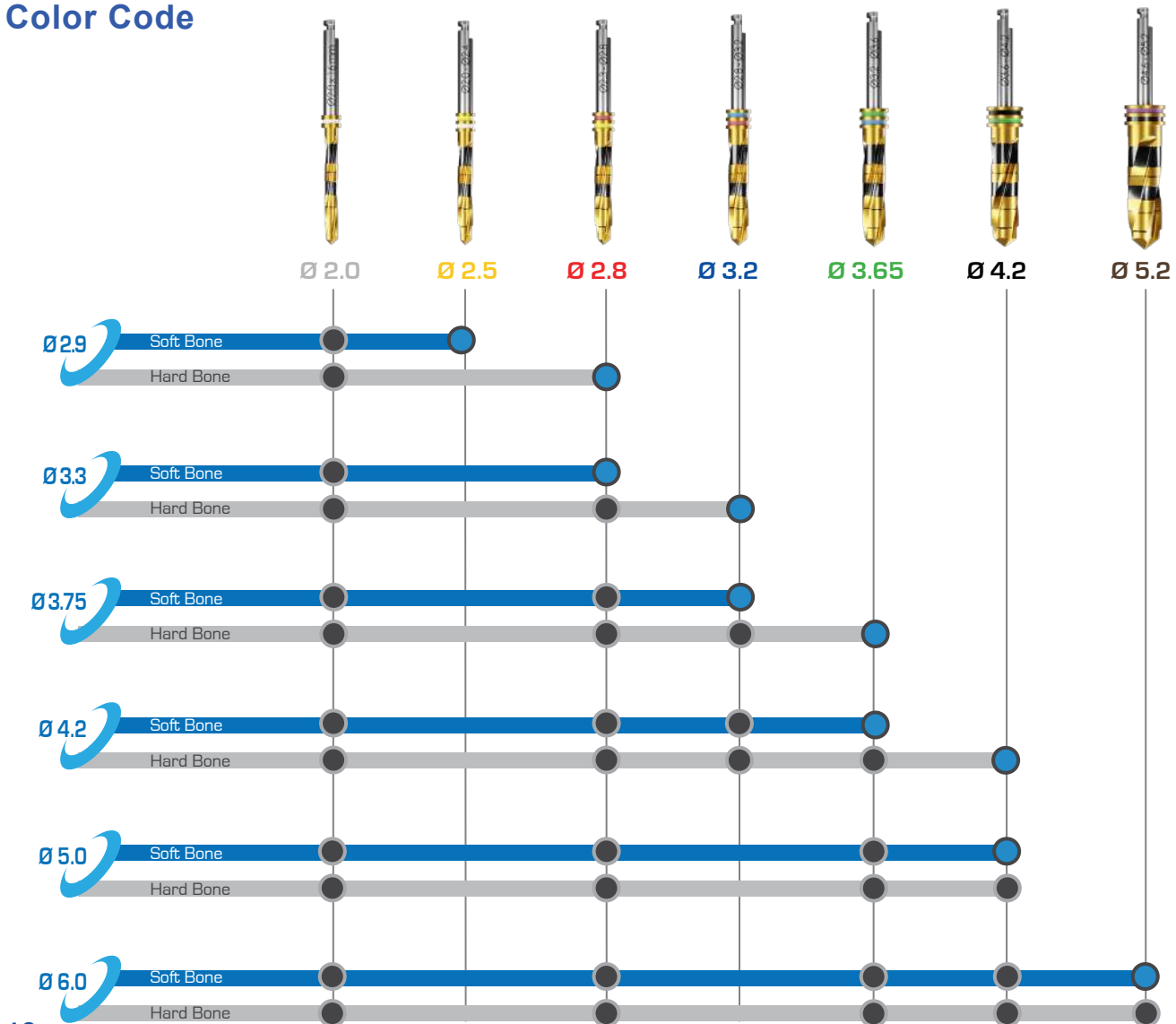
In principle, we recommend using a drill that its diameter smaller than the diameter of the implant, in the case of soft bone condition. Also, consider using a similar drill diameter implant intended for implantation in the case of hard bone in order to avoid trauma to the bone and ensure rapid bone building around the implant.

IMPORTANT NOTICE :

It is important to ensure all instrumentation, surgical hand pieces, and equipment has been sterilized to prevent the possible contamination of the system, and the patient.

- recommended implant increment torque 35-65 NCM
- recommended drilling speed 800-1200 RPM
- recommended prosthetics screw tightening torque 25-30 NCM
- recommended healing cap tightening torque 15 NCM
- all procedures recommended by BioLine Implants systems are not replacing the surgeon experience and judgment

Color Code



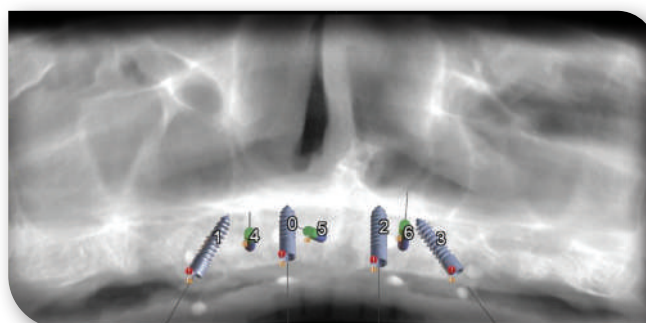
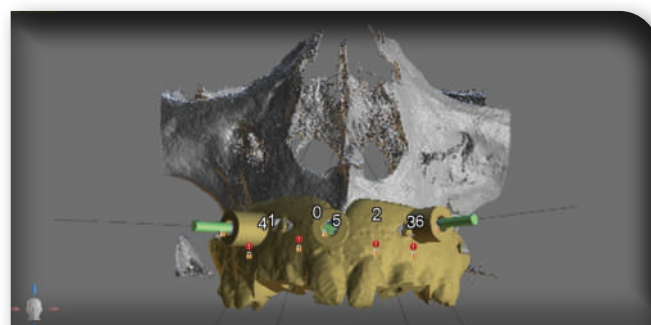
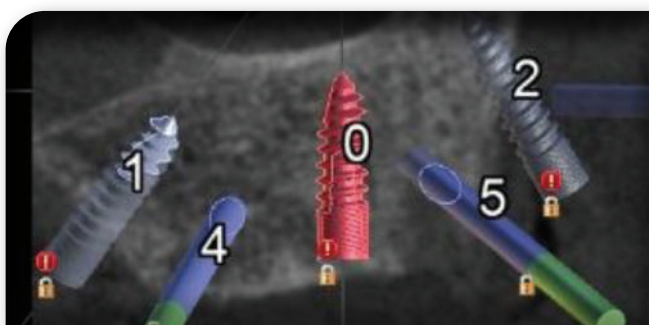
BioGuide – Guided surgery services

Currently, there have been major technological developments in diagnostic imaging methods and turned more accessible. The introduction of computed tomography images, including cone-beam computed tomography (CBCT), improved the outcome of implant-based treatments since it allows preoperative diagnosis with excellent quality and less exposure of the patients to radiation. When CBCT was associated with computer-aided design and manufacturing (CAD/CAM) provided surgical planning in both virtual and 3D environments, providing the practitioner with a realistic view of the patient's bony anatomy, thus permitting a virtual execution of the surgery in an ideal and precise prosthetically driven manner. This approach has been introduced to transfer virtual planning to the clinical procedure, allowing for less invasive surgeries, adequate implant placement, reduction of postoperative discomfort, and fabrication of prosthetic structures before surgical procedures.

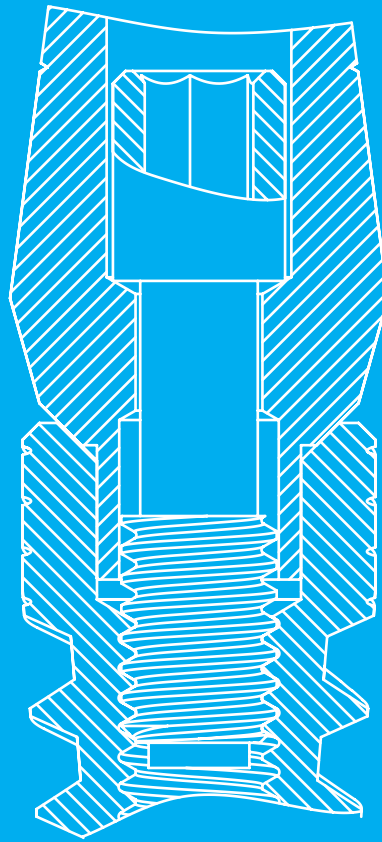
The CAD/CAM has generated a growing trend in recent studies. There are different techniques involving guided surgery, evaluating accuracy of positioning of dental implants in comparison with virtual planning, and clinical results in the patients. The use of computer-guided surgery had been restricted to the advantage's surgical aspects of implant treatment. Prosthetic treatment still has to be carried out following conventional protocols. However, the link to transfer prosthetic information to the patient is of great importance, and exact reference points are required to position the implants in such a way that prefabricated prosthetics have a precise fit.

BioLine company established the BioGuide Service – computer guided surgery system in order to simplify implantology procedure to the beginners, and open the gate to the ones that was having a doubts. More than that BioGuide Service ensure high precision non-risk operation even for the experienced doctors, in a complicated case as implant placement in the esthetic zone / close to the mandibular nerve/ maxillary sinus / in a case of using extra-long implants as zygomatic / pterygoid as a graft less solution.

Contact us / your local dealer and plan your next safe & successful computer guided surgery!



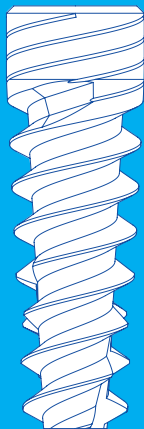
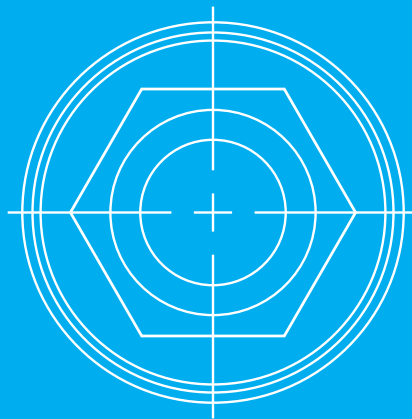
INTERNAL HEX CONNECTION



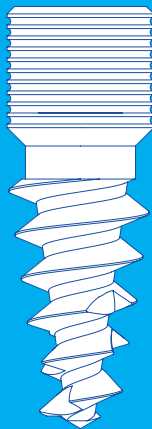
Internal hex advantage's

- Easy simple to use
- One platform fits to all implant diameters
- Proven and well known
- High mechanical strength capacity
- High accuracy and easy future maintenance

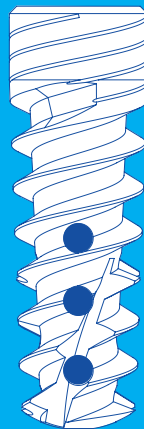
SIMPLE & ACCURATE INTERNAL HEX COLLECTION



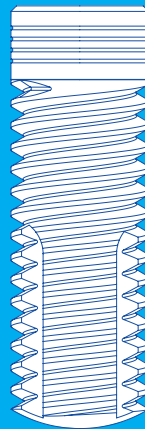
SDI



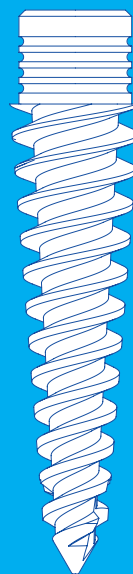
GRIP



MAI



CDI



PTR



ZYGO

Our spiral implant is a unique product based on traditional and proven design of tapered implant threaded balanced and dynamic self-drilling capability. Outstanding tapered implant symmetrical structure that contributes to balance efforts and equal distribution of possible loads during implantation and for the duration of use.

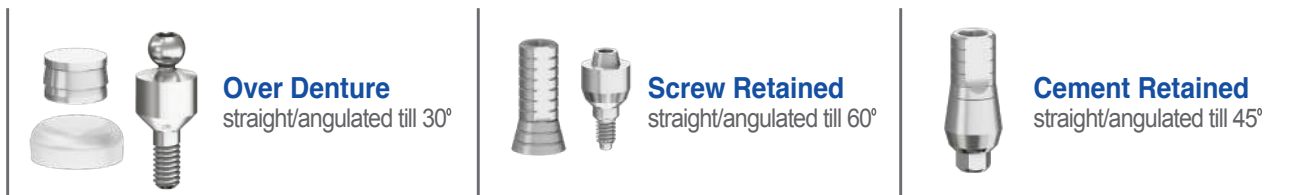
Anodized coating technology unique anti-bacterial process.

The implants undergo anodized coating process which contributes to creating anti-bacterial shell on titanium raw. The coating is made from natural ingredients Food Standard \ Medicine and unattended polluting industrial materials. Anodized great extent contributes to the mechanical strength and maintaining internal connection implant restoration parts and prevents friction between bare metal, this procedure ensures long-term success of rehabilitation on implants.

SDI Implant advantage's

- user friendly
- easy & fast incision lead by the active design improved bone cutting and condensing ability's
- higher BIC (Bone & implant contact) lead for excellent primary stability
- can be used for immediate placement & loading reduce Bone resorption
- **Biofix** Biological surface for fast healing and long term osseointegration

RESTORATION OPTIONS:

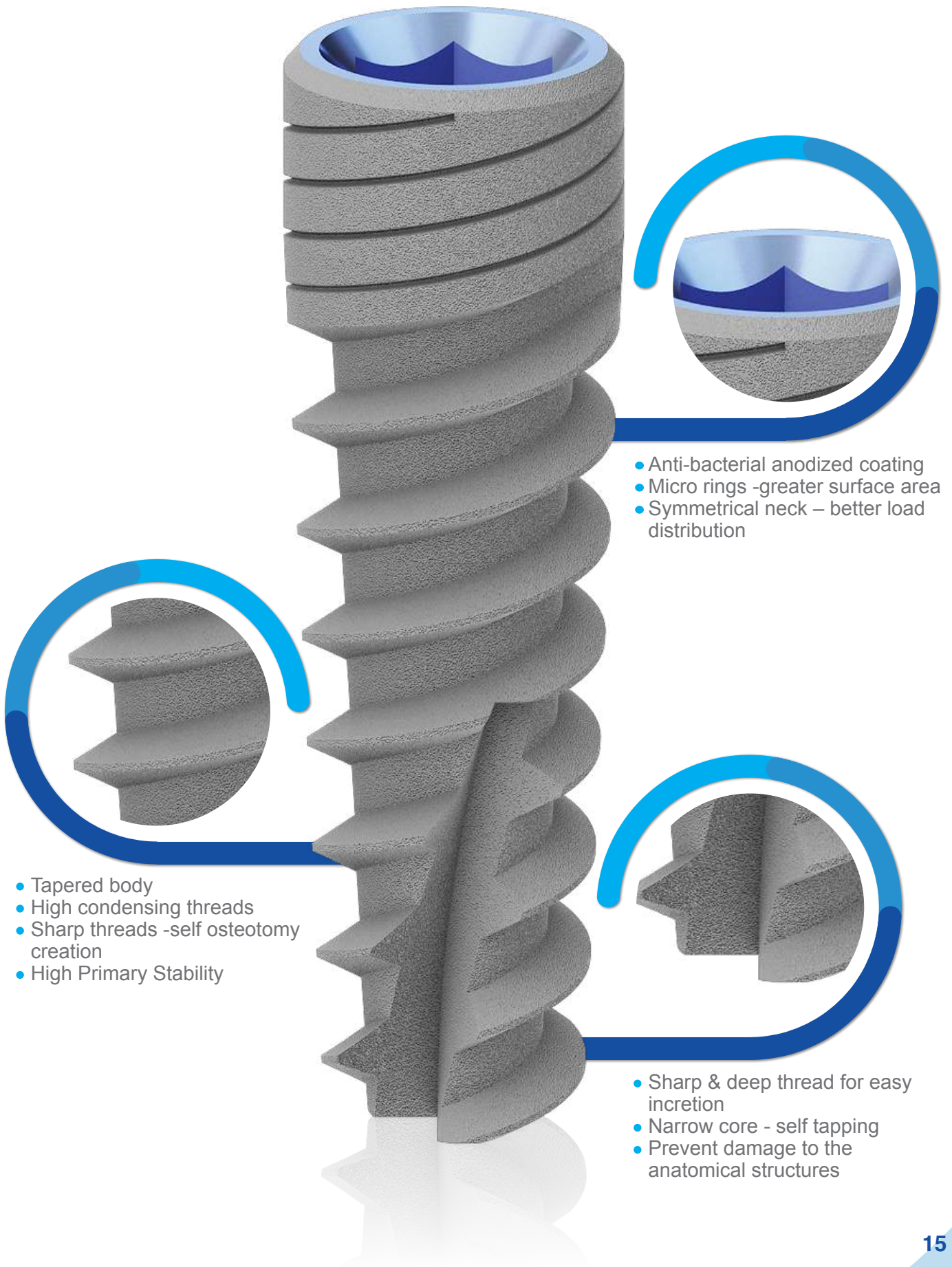


Ordering information:

Dia ▶	2.9	3.3	3.5	3.75	4.2	5.0	6.0	
Length	6		BIO-F3506	BIO-F3706	BIO-F4206	BIO-F5006	BIO-F6006	
	8	*BIO-F2908	BIO-F3308	BIO-F3508	BIO-F3708	BIO-F4208	BIO-F5008	BIO-F6008
	10	*BIO-F2910	BIO-F3310	BIO-F3510	BIO-F3710	BIO-F4210	BIO-F5010	BIO-F6010
	11.5	*BIO-F2911	BIO-F3311	BIO-F3511	BIO-F3711	BIO-F4211	BIO-F5011	BIO-F6011
	13	*BIO-F2913	BIO-F3313	BIO-F3513	BIO-F3713	BIO-F4213	BIO-F5013	BIO-F6013
	16	*BIO-F2916 2.1 mm hex slim version	*BIO-F3316	BIO-F3516	BIO-F3716	BIO-F4216	BIO-F5016	

- The apical diameter is thinner than the Crestal diameter in 0.5 mm, included all implants sizes.

Spiral Implant



- The Grip implant system has been designed especially to give better stability during immediate loading.
- Grip sharp & deep threads provide extremely strong retention for primary implant stability.
- The threads aggressive shape creates primary stability and maximum bone condensing in the sponge bone.
- Polished neck with groves prevents bone loss and increase healing and bonding with wider implant surface.
- The Grip implant designed to be used in extraction sites for immediate implantation.

Grip implant advantage's

- user friendly
- minimal drilling protocol required
- implant can be used as a self-osteotome
- design specially for under drilling sockets
- Gold anti-bacterial neck, prevent peri implantitis and crestal bone loss
- bone condensing threads-maximum primary implant stability
- **Biofix** Biological surface for fast healing and long term osseointegration

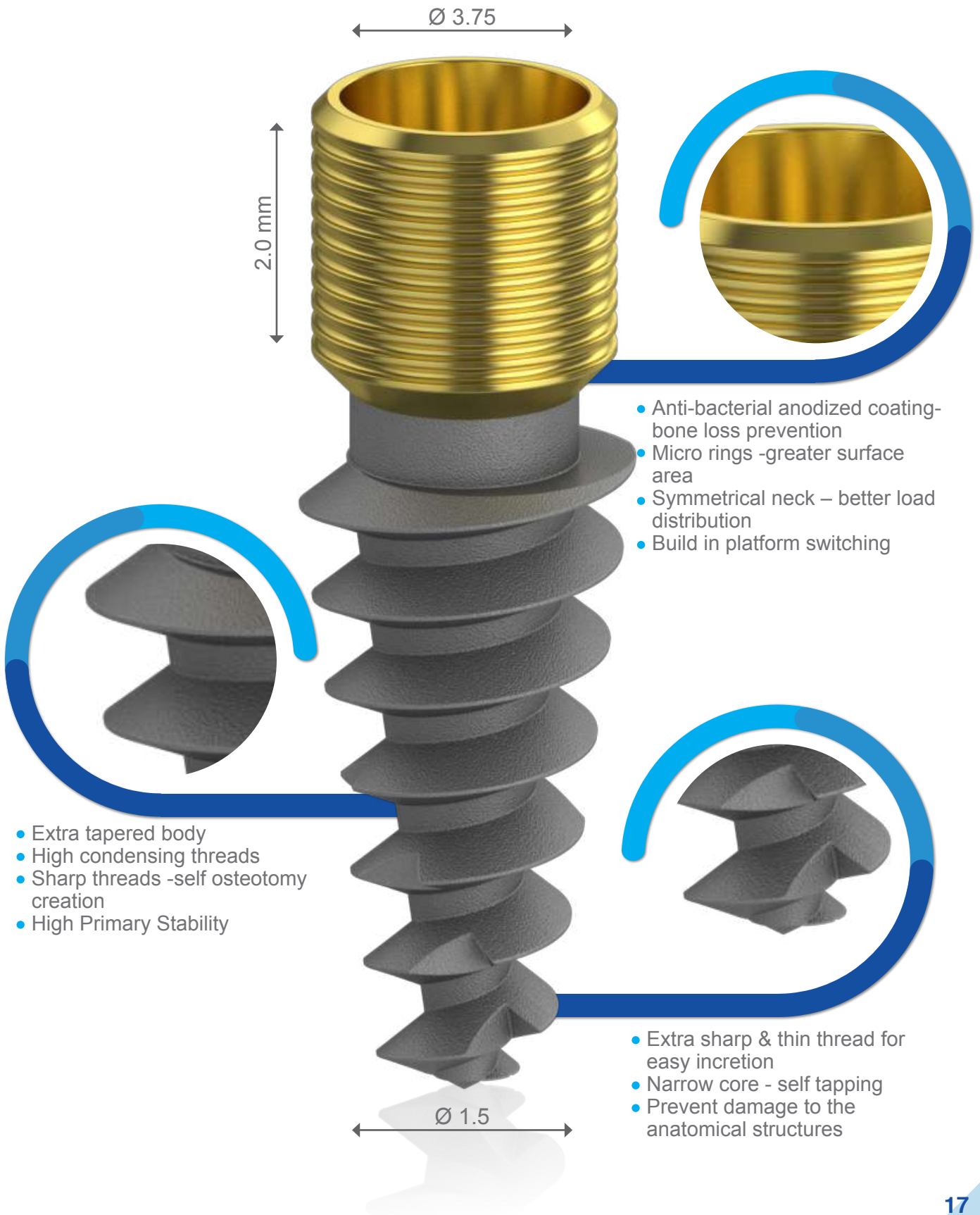
RESTORATION OPTIONS:



Ordering information:

Length	Dia ▶		
	3.75	4.2	5.0
8	BIO-GRIP3708	BIO-GRIP4208	BIO-GRIP5008
10	BIO-GRIP3710	BIO-GRIP4210	BIO-GRIP5010
11.5	BIO-GRIP3711	BIO-GRIP4211	BIO-GRIP5011
13	BIO-GRIP3713	BIO-GRIP4213	BIO-GRIP5013
16	BIO-GRIP3716	BIO-GRIP4216	BIO-GRIP5016

Implant



Our grip is a unique implant which is extra tapered to create extra self-osteotomy, bone condensing & preservation, by extra sharp and deep thread design+ thin and sharp apex (apex diameter is 1.5mm in all the implant diameters)

This unique featured design required different drilling sequence as per the Drill Less Approach

Please follow the sequence below:

IMPORTANT NOTICE :

It is important to ensure all instrumentation, surgical hand pieces, and equipment has been sterilized to prevent the possible contamination of the system, and the patient.

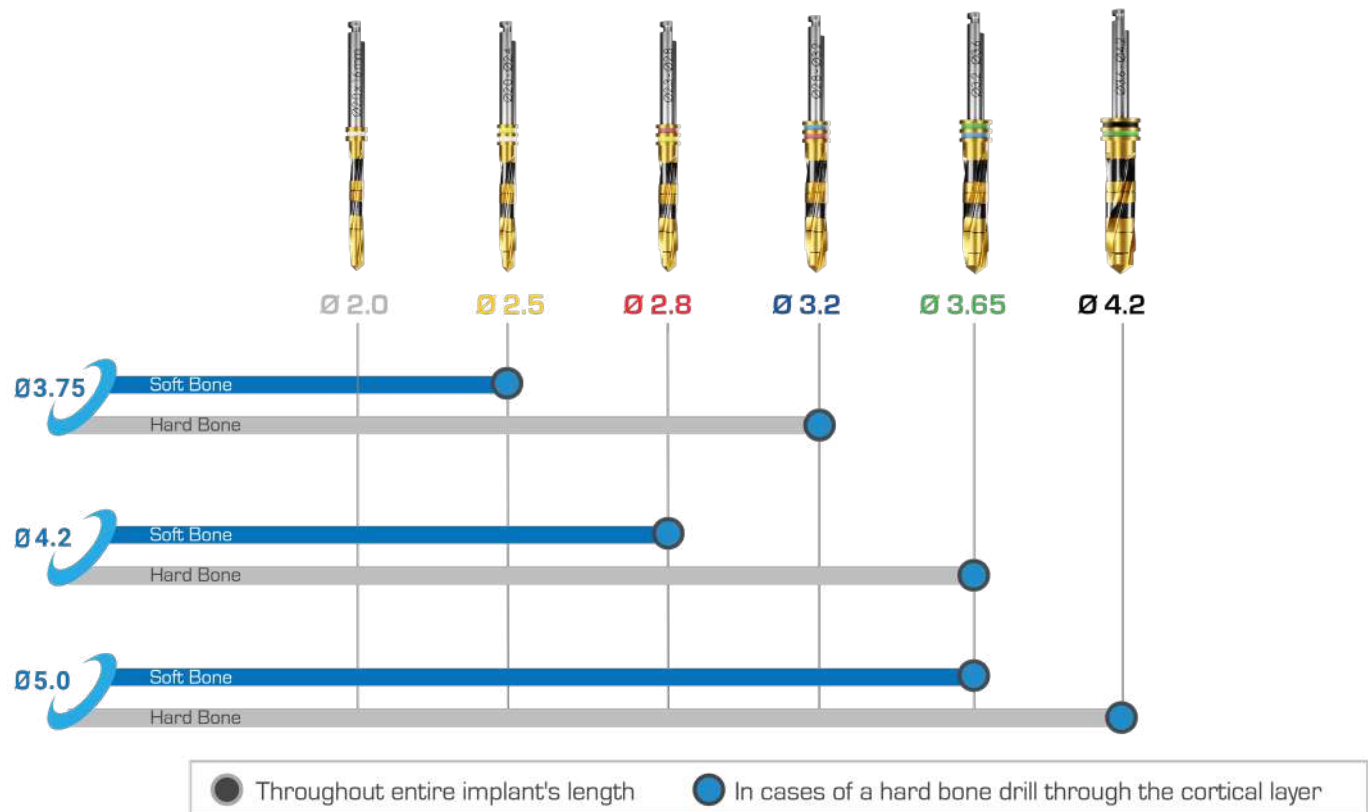
Soft bone (D3,D4): all sizes of grip implant to be drilled 2 mm less then the implant length

Hard bone (D2,D1): Ø2mm diameter (pilot drill) to be drilled full according to the implant length next drills to be drilled 2mm less then the implant length

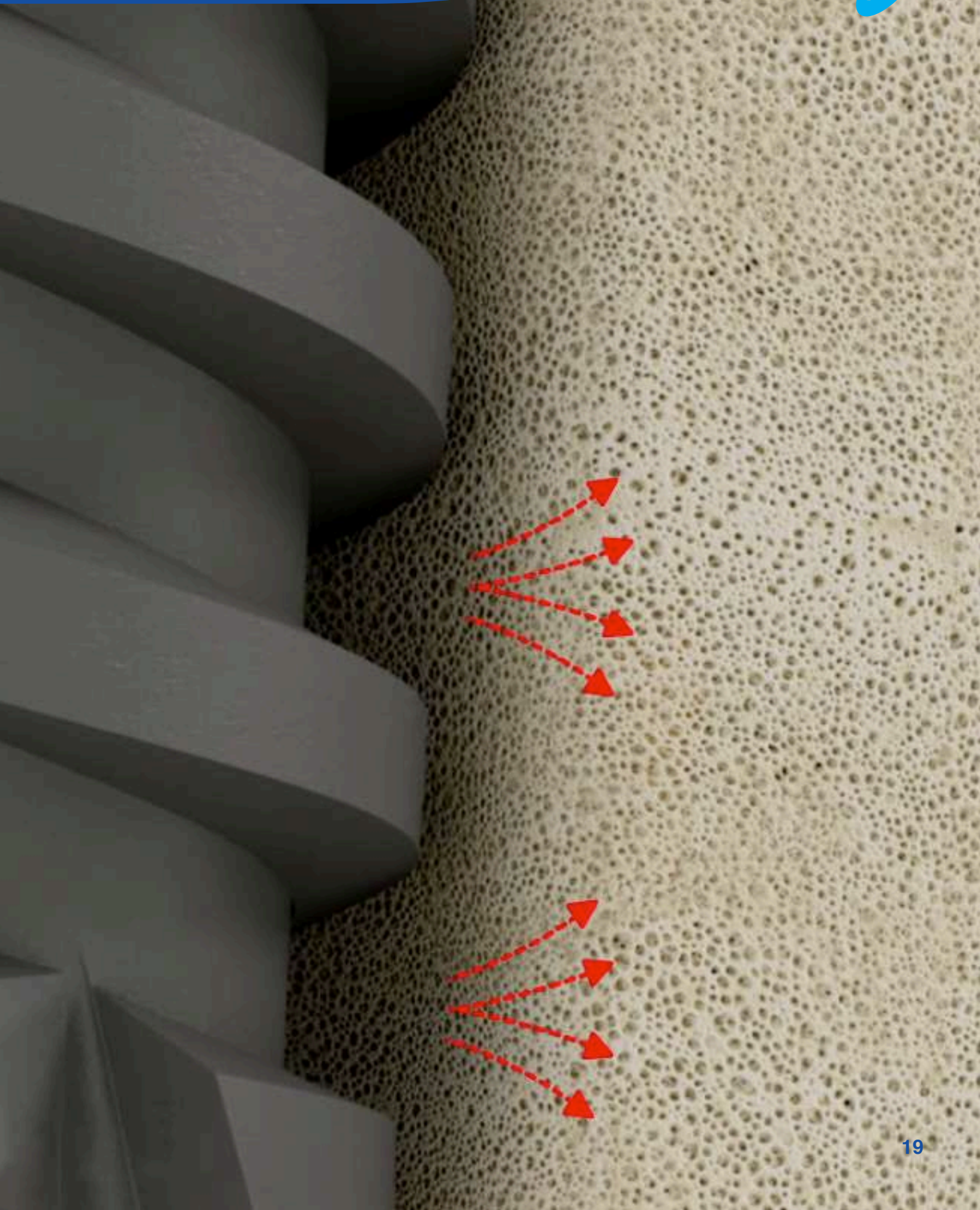
final drill to be countersink (for 3.75&4.2 drill Ø3.75 - Ø4.2, for Ø5.0 implant drill Ø5-6)

- recommended implant incretion torque 35-65 NCM
- recommended drilling speed 800-1200 RPM
- recommended prosthetics screw tightening torque 25-30 NCM
- recommended healing cap tightening torque 15 NCM
- all procedures recommended by BioLine Implants systems are not replacing the surgeon experience and judgment

Color Code



drilling protocol



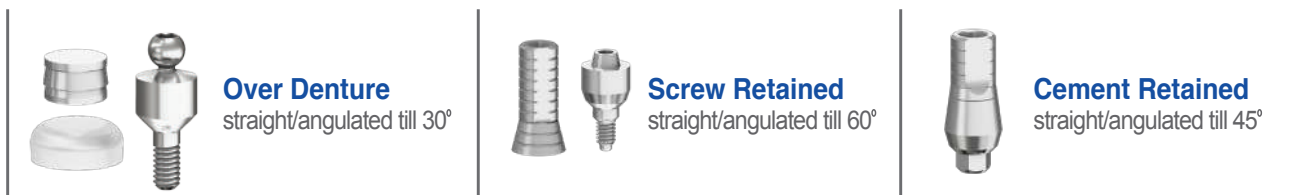
Active implant

is a unique dental implant developed after thorough research related to the ongoing quality of the connection between the bone and the dental implant. Our development team sought a solution that would extend as far as possible the life of the connection between the bone and the implant everything to ensure long-term quality restoration or almost infinite. In the development process is taken into consideration that even if we use the finest dental implant in the world, it is agreed that this object is a passive metal implant which has no lasting benefit or active contribution of osteointegration. from this point of view, we developed Active implant based on our spiral implant line, but hollowed and with few points of holes in the body, all for the transport or injection of fluid-gel that contain regeneration ingredients.

Inventive Thinking

As presented in the introduction about the Active family implant. The goal is to use this unique dental implant as a tool for transporting liquids and \ or special solutions designed to refresh the soft bone in the jaw. Special holes at the bottom of the implant body and graft are used for transporting liquids from the implant after successful implantation process and indefinitely when the implant is functioning as a basis for dental rehabilitation on the one hand, and as a tool for conveying the same fluid causes the processing of soft bone regeneration. This innovative Active implant is unique and exclusive to our company and reflects technological innovation and a major breakthrough in relation to prolong the life of dental implants and extending the medical care success and life quality of the patient. The proposed maintenance using Active dental implant \ device

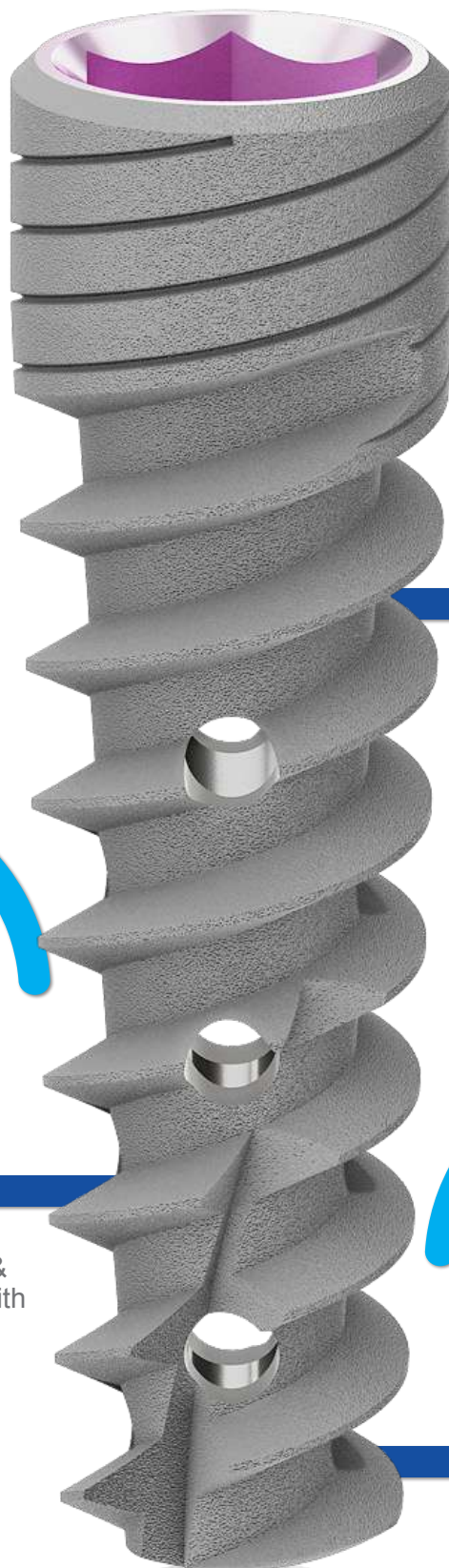
RESTORATION OPTIONS:



Ordering information:

	Dia ▶	3.3	3.75	4.2	5.0	6.0
Length	6		BIO-IR3706	BIO-IR4206	BIO-IR5006	BIO-IR6006
	8	BIO-IR3308	BIO-IR3708	BIO-IR4208	BIO-IR5008	BIO-IR6008
	10	BIO-IR3310	BIO-IR3710	BIO-IR4210	BIO-IR5010	BIO-IR6010
	11.5	BIO-IR3311	BIO-IR3711	BIO-IR4211	BIO-IR5011	BIO-IR6011
	13	BIO-IR3313	BIO-IR3713	BIO-IR4213	BIO-IR5013	BIO-IR6013
	16	BIO-IR3316	BIO-IR3716	BIO-IR4216	BIO-IR5016	

Maintained Active Implant



- Anti-bacterial anodized coating
- Micro rings -greater surface area
- Symmetrical neck – better load distribution

- Innovative hollow platform ensure bone preservation & internal osseointegration with the years to come

- Sharp & deep thread for easy incision
- Narrow core - self tapping
- Prevent damage to the anatomical structures

The company's implant Cylinder built in order to achieve stability and serve as an anchor for a stable reconstruction. Implant corrugation delicate and multi-donor bone compression insertion process, the cylinder implant is recommended for use in cases of particularly hard bone, but functions well in other cases. cylinder Implant is a classic and reliable product for many years. Easy insertion of the implant in accordance with the recommended drilling Protocol and the geometric structure ensures long term stability.

Anodized coating technology unique anti-bacterial process.

The implants undergo anodized coating process which contributes to creating anti-bacterial shell on titanium raw. The coating is made from natural ingredients Food Standard \ Medicine and unattended polluting ontributes to the mechanical strength and maintaining internal connection implant restoration parts and prevents friction between bare metal, this procedure ensures long-term success of rehabilitation on implants.

CDI implant advantag's

- user friendly
- suit wide range of cases & bone types
- engineered for mild compression
- offer excellent stability in hard bone case's
- **Biofix** biological surface for fast healing and long term osseointegration

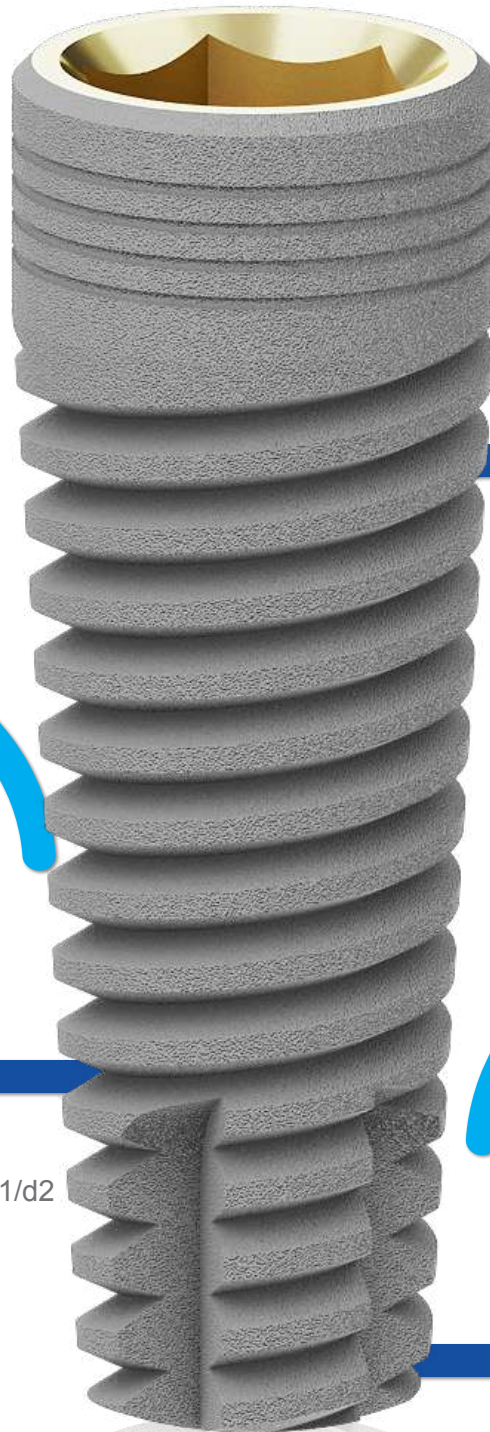
RESTORATION OPTIONS

	<p>Over Denture straight/angulated till 30°</p>		<p>Screw Retained straight/angulated till 60°</p>		<p>Cement Retained straight/angulated till 45°</p>
---	--	---	--	---	---

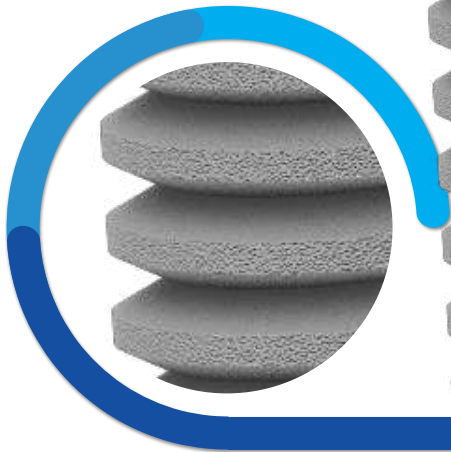
Ordering information:

	Dia ▶	3.3	3.75	4.2	5.0	6.0
Length	6		BIO-G3706	BIO-G4206	BIO-G5006	BIO-G6006
	8	BIO-G3308	BIO-G3708	BIO-G4208	BIO-G5008	BIO-G6008
	10	BIO-G3310	BIO-G3710	BIO-G4210	BIO-G5010	BIO-G6010
	11.5	BIO-G3311	BIO-G3711	BIO-G4211	BIO-G5011	BIO-G6011
	13	BIO-G3313	BIO-G3713	BIO-G4213	BIO-G5013	BIO-G6013
	16	BIO-G3316	BIO-G3716	BIO-G4216	BIO-G5016	

Cylindrical Implant



- Anti-bacterial anodized coating
- Micro rings -greater surface area
- Symmetrical neck – better load distribution



- Straight body
- condensing threads
- High Primary Stability for d1/d2 type of bone



- Deep condensing grooves
- Stable core apex
Prevent damage to the anatomical structures

BioLine Compressive implant, is a single piece implant in structure, contain the implant with a build in abutment, and narrow neck which can be bended.

The design of BioLine compressive implant, as its name is compressive, ment to compress and condense the natural native bone due under drilling Protocol, and to preserve the bone.

The compressive implant series available in wide range of different diameters and lenghs, starts at 3.0mm dia which is very narrow and very suitable for narrow ridges and single teeth replacement in the esthetic smile zone, and reached till 6.0 mm diameterwhich can suit even for molar replacement. Due the active design and the single piece structure, BioLine Compressive implant is highly recommended for "immediate placement & loading Techniques"



Compressive Implant Advantage's

- build in platform switching for soft tissue growth
- user friendly especially for narrow ridges and tight spaces
- can be used for immediate loading
- smooth anti-bacterial collar prevents peri implantitis
- self-tapping for easy incertion
- **Biofix** Biological surface for fast healing and long term osseointegration

Optional Components



LAB ANALOG
BIO-SPA



TRANSFER
BIO-SPT

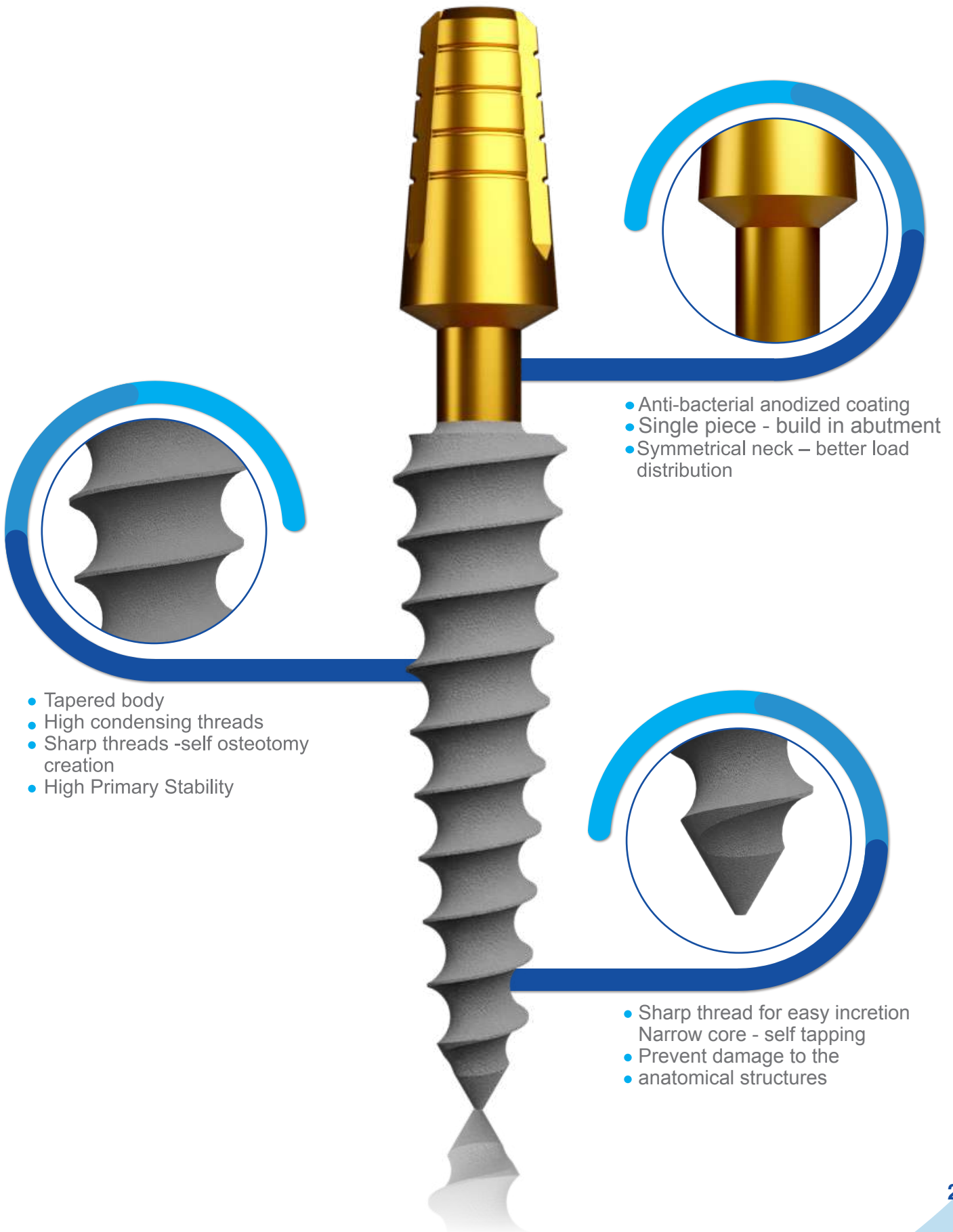


HEALING CAP
BIO-SPH

Ordering information:

	Dia ▶	3.0	3.3	3.75	4.2	5.0
Length	8	BIO-CC3008	BIO-CC3308	BIO-CC3708	BIO-CC4208	BIO-CC5008
	10	BIO-CC3010	BIO-CC3310	BIO-CC3710	BIO-CC4210	BIO-CC5010
	11.5	BIO-CC3011	BIO-CC3311	BIO-CC3711	BIO-CC4211	BIO-CC5011
	13	BIO-CC3013	BIO-CC3313	BIO-CC3713	BIO-CC4213	BIO-CC5013
	16	BIO-CC3016	BIO-CC3316	BIO-CC3716	BIO-CC4216	BIO-CC5016
	18	BIO-CC3018	BIO-CC3318	BIO-CC3718	BIO-CC4218	BIO-CC5018
	20	BIO-CC3020	BIO-CC3320	BIO-CC3720	BIO-CC4220	BIO-CC5020

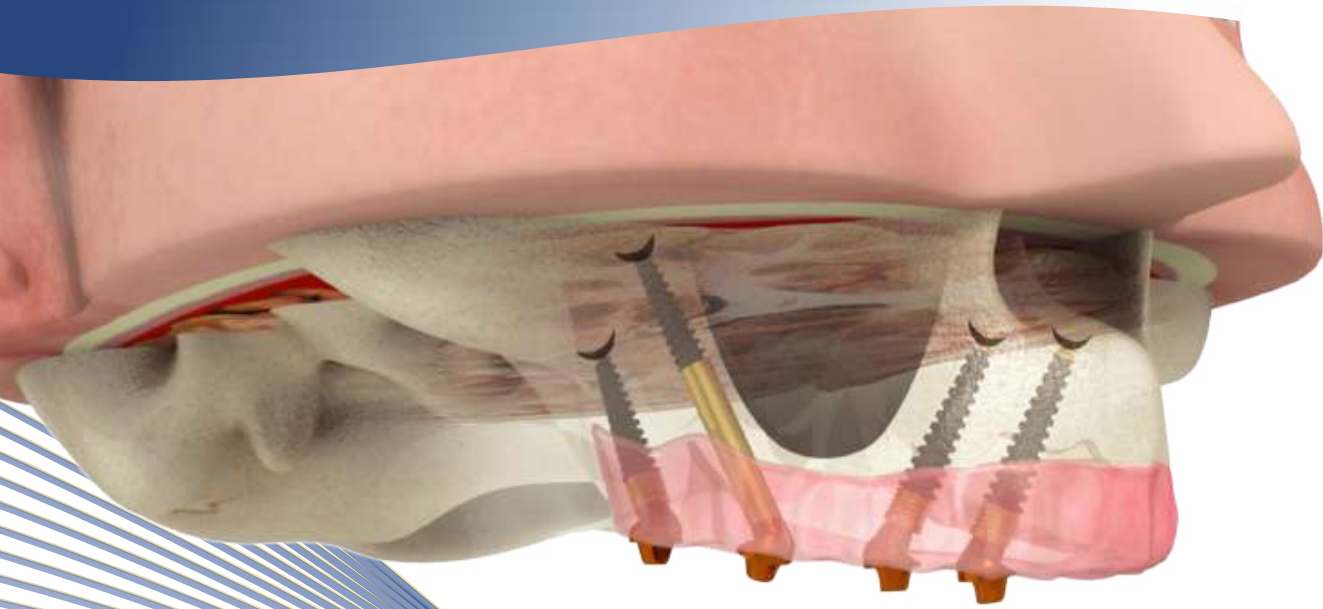
Bendable



- Anti-bacterial anodized coating
- Single piece - build in abutment
- Symmetrical neck – better load distribution

- Tapered body
- High condensing threads
- Sharp threads -self osteotomy creation
- High Primary Stability

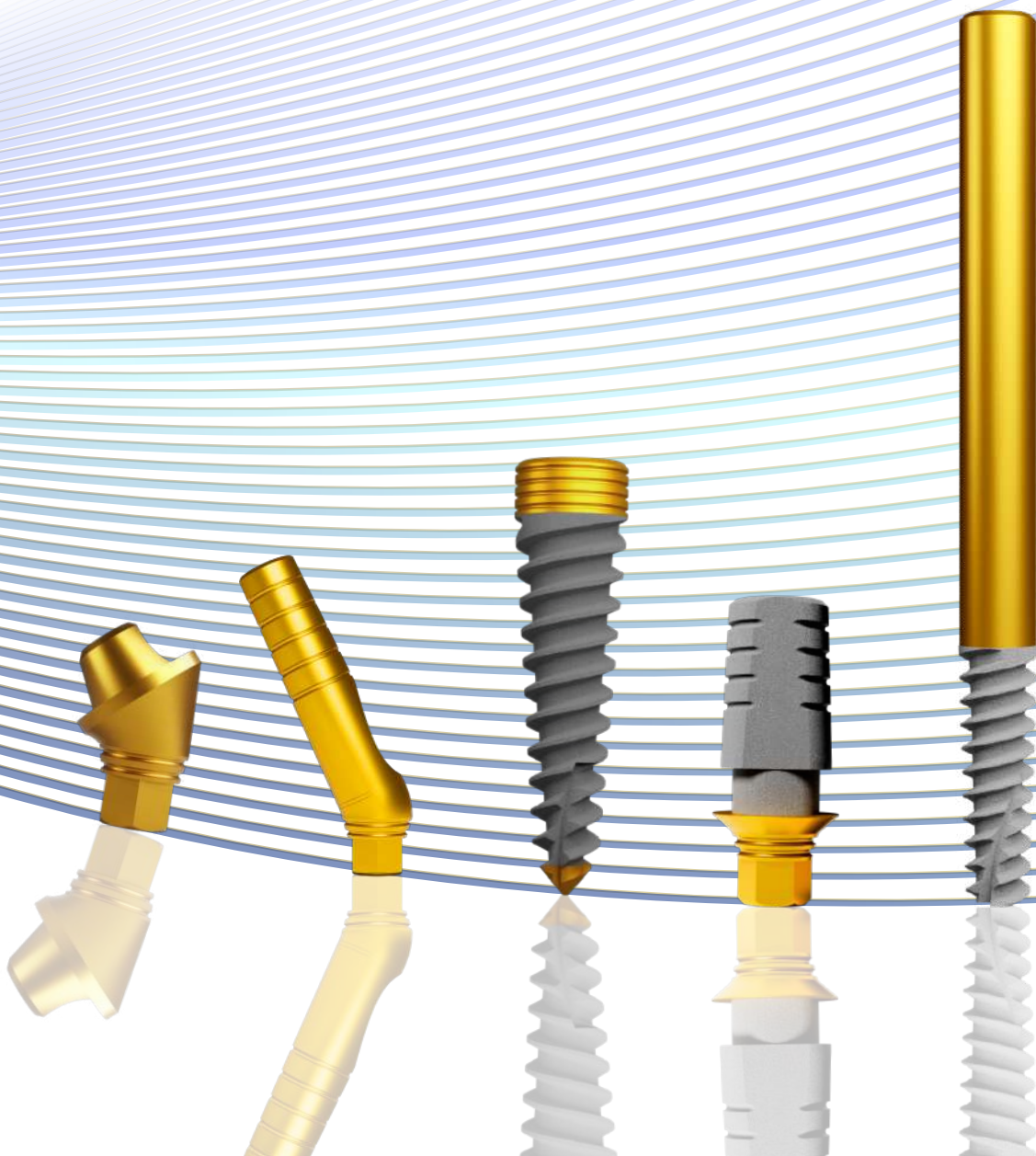
- Sharp thread for easy incision
Narrow core - self tapping
- Prevent damage to the anatomical structures



The TILT Concept

**Innovative GraftLess Solution For
Atrophic Jaws Using Immediate
Loading Technique.**

Concept



Zygomatic implants are an evidence-based surgical and prosthetic solution for both two-stage and immediate loading protocols. Today, zygomatic implants are usually placed using an immediate loading protocol. The main indication for zygomatic implants is the severely resorbed edentulous maxilla, but they can also be used in partially edentulous situations. Indications for zygomatic implant insertion include: alternative for sinus augmentation, failed sinus augmentation, rehabilitation after tumor resection or trauma, failure of conventional implants, failure of previous bone grafts. The placement of zygomatic implants requires adequate training and surgical experience.



Zygomatic Implant advantage

- Graftless solution – avoid sinus augmentations-time & money saver
- Smooth anti-bacterial long neck – prevent inflammation, even in intra sinus cases
- Shorten the time of permanent teeth delivery
- high primary stability as they supported by the zygomatic bone
- high patient satisfaction

RESTORATION OPTIONS:

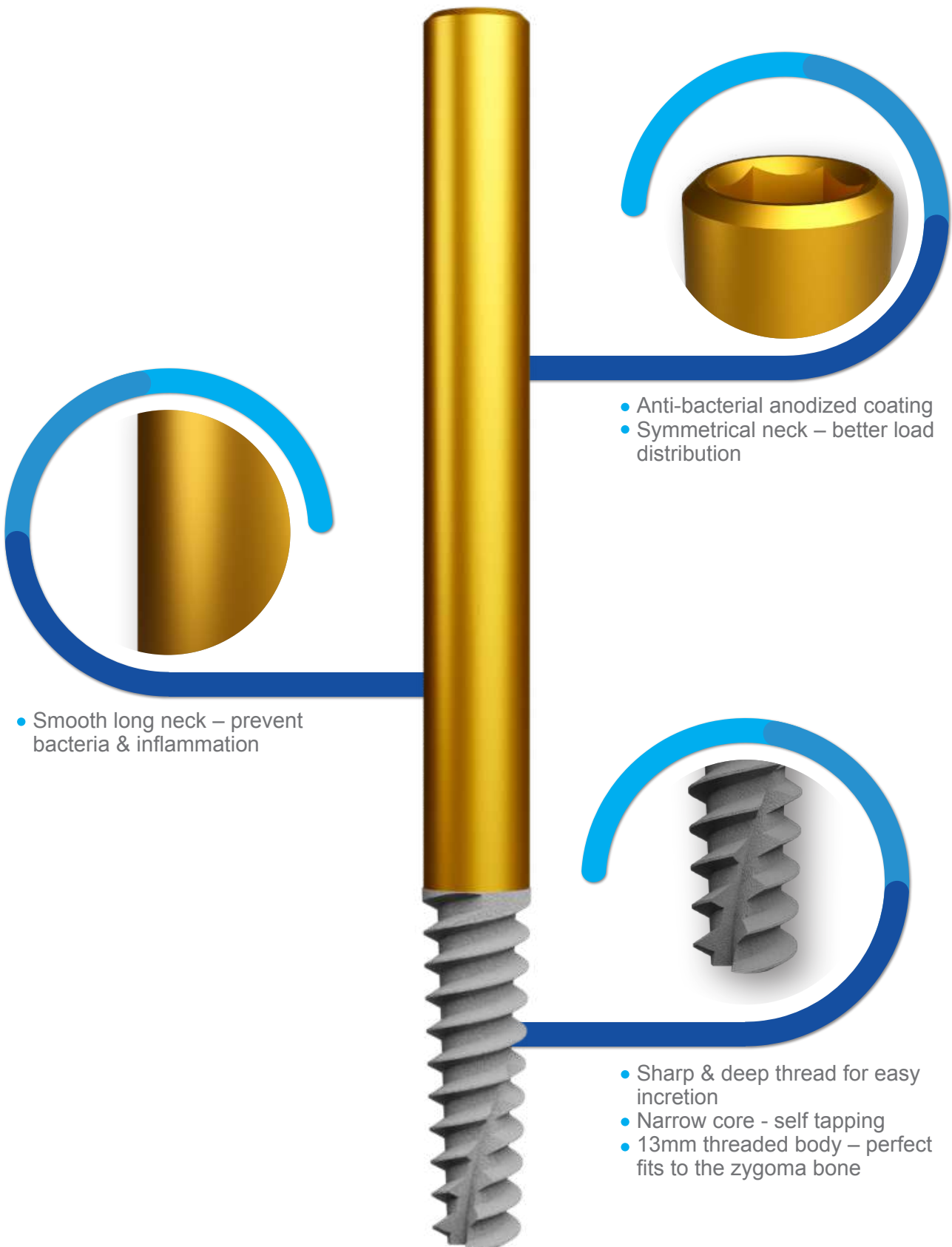


Ordering information:

Length	Dia ▶	
	3.75	4.2
30	BIO-ARCH3730	BIO-ARCH4230
35	BIO-ARCH3735	BIO-ARCH4235
40	BIO-ARCH3740	BIO-ARCH4240
45	BIO-ARCH3745	BIO-ARCH4245
50	BIO-ARCH3750	BIO-ARCH4250
55	BIO-ARCH3755	BIO-ARCH4255
60	BIO-ARCH3760	BIO-ARCH4260

Important notice: 3.75 mm diameter of zygomatic implant to be used in case of quad maxillary zygoma and should be placed beside 4.2 mm to split the load distribution and avoid implants fractures

Zygomatic Implant



Pterygoid implant insertion is an alternative to avoid sinus-lifting or other grafting procedures to treat the posterior maxilla

Pterygoid implant are especially used in partial edentulism in order to avoid distal cantilevers

The placement of a pterygoid implant requires surgical experience

Pterygoid implants have high success rates, lesser bone loss levels to those of conventional implants, minimal complications and a good patient acceptance

Pterygoid implant advantage's

- Graftless solution – avoid sinus augmentations-time & money saver
- Shorten the time of permanent teeth delivery
- Gold anti-bacterial neck, prevent peri implantitis and crestal bone loss
- Bone condensing threads-maximum primary implant stability
- Sharp thin apex, easy biocritical anchorage
- **Biofix** Biological surface for fast healing and long term osseointegration

Surface treatment options :



I-GOLD

Indication- the perfect choice for trans sinus implant placements , to fasten the sinus healing , avoid inflammation , and achieve perfect Anchorage

Ordering information- add IG to the code mentioned at the table below

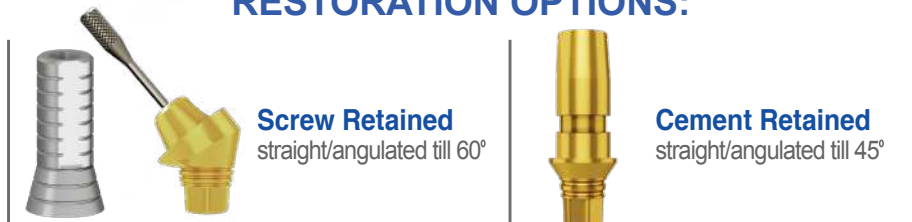


I-SURFACE

Indication -two piece cortical implant for any bi-cortical anchorage, perfectly suting nasal floor & lower mandible basal cortical engagement.

Ordering information- add IS to the code mentioned at the table below .

RESTORATION OPTIONS:



Screw Retained
straight/angulated till 60°

Cement Retained
straight/angulated till 45°

Ordering information:

	Dia▶	3.0	3.5	3.75	4.2
Length	16	BIO-IH3016	BIO-IH3516	BIO-IH3716	BIO-IH4216
	18	BIO-IH3018	BIO-IH3518	BIO-IH3718	BIO-IH4218
	20	BIO-IH3020	BIO-IH3520	BIO-IH3720	BIO-IH4220
	22	BIO-IH3022	BIO-IH3522	BIO-IH3722	BIO-IH4222
	25	BIO-IH3025	BIO-IH3525	BIO-IH3725	BIO-IH4225

* Slim Version
2.1 Mm Hexagon

Pterygoid Implant



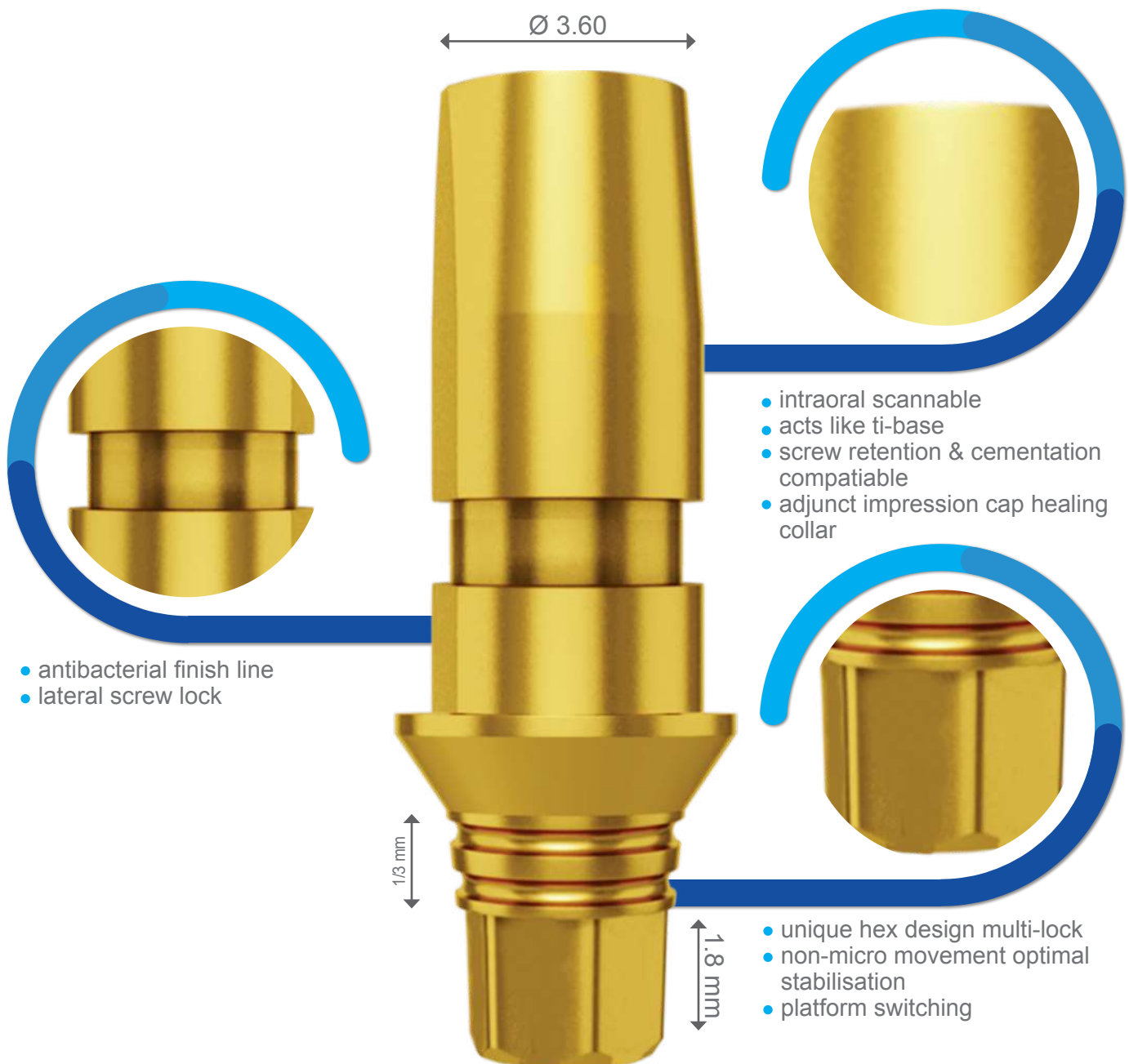
- gold anodized anti bacterial coating
- machined micro thread design
- crestal bone preservation
- high initial stability

- high cutting
- high bone condensing aggressive
- square threaded design

- sharp apex for bicortical anchorage
- gold anodized anti bacterial coating
- easy insertion
- high primary engagement

The concept of tilted implants brings to the table a unique state of the art prosthetics components line in order to improve the quality of restoration which was the only limit of tilted implants many years back. The use of our innovative abutment's makes restoration easier, with the perfect achievement of precision and correct the angulation of the implant after placement without a limit. Our all premium tilted implants prosthetics supported the platform switching concept with a thin platform level available in different heights to ensure perfect fitting in sub - crestal implant placement that prevent crestal bone loss and increase the success rate of the implant even in compromise situations

A Revolution In Dental Implantology





one smart abutment Straight Abutment

Cat No.	BIO-IS10-L	vBIO-IS30-L
Height	1 mm	3 mm



15° Angulated Abutment

Cat No.	BIO-A3211-I1	BIO-A3211-I3
Height	1 mm	3 mm



25° Angulated Abutment

Cat No.	BIO-A3411-I1	BIO-A3411-I3
Height	1 mm	3 mm



35° Angulated Abutment

Cat No.	BIO-A3509-I1	BIO-A3509-I3
Height	1 mm	3 mm



45° Angulated Abutment

Cat No.	BIO-A4509-I1	BIO-A4509-I3
Height	1 mm	3 mm

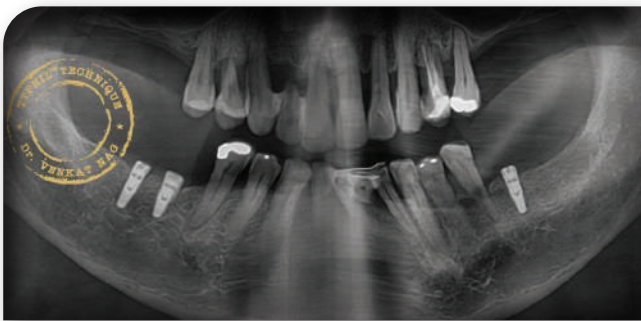


Angulated Multi-Unit Abutment

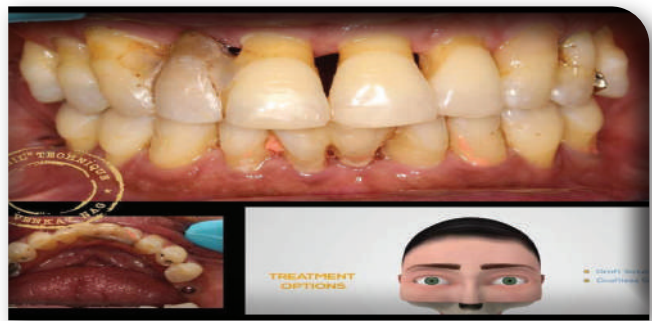
Cat No.	BIO-MS-09-1	BIO-MS-18-1	BIO-MS-30-1	BIO-MS-40-1	BIO-MS-50-1	BIO-MS-60-1
Angle	9°	18°	30°	40°	50°	60°
Height	1 mm	1 mm	1 mm	1 mm	1 mm	1 mm

* All angles available in 1 & 3 mm Height

**IMMEDIATE IMPLANTATION LOADING WITHOUT CANTILEVER
USEING SCREW RETAINED PROSTHETICS
MAXILLARY ARCH REHABILITATION
By Dr P. Venkat Nag. Hyderabad India**



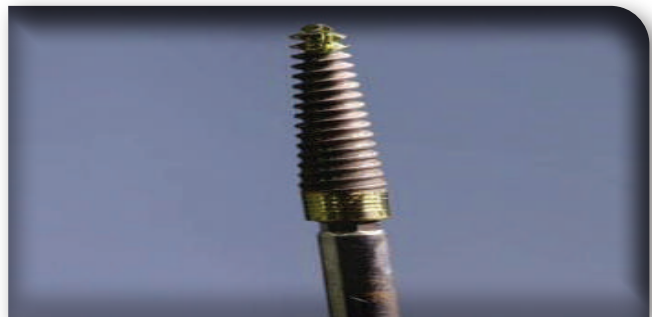
1. Maxillary arch failing dentition lower 36,46,47 loeer implants placed 2 years back



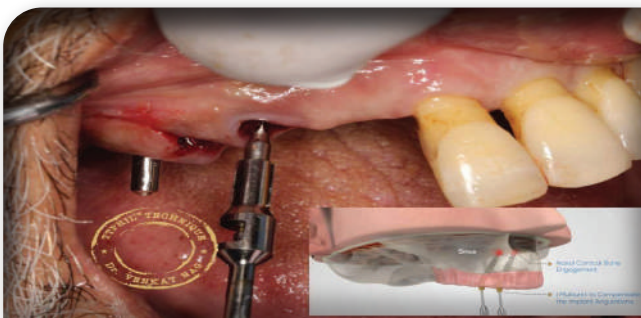
2. Pre operation



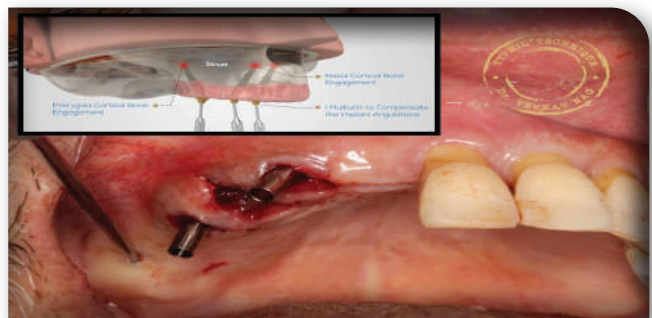
3. Single drill concept osseo condensation multicortical anchorage



4. Biloline pterygoid (implant) sharp apex for easy cortical engagement



5. Nasal cortical bone engagement



6. Pterygoid cortical bone engagement



7. Reverse torque test >45 NC



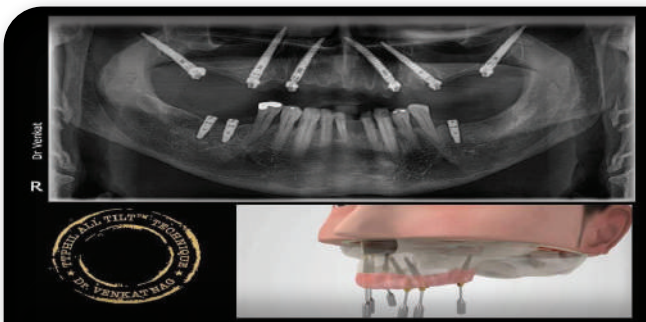
8. High torque >60 NC bicortical engagement



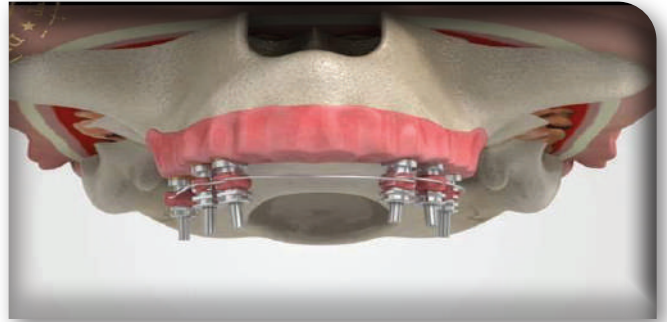
9. Pterygoid implant before placement



10. Flapless pterygoid engaging the pterygoid pillar



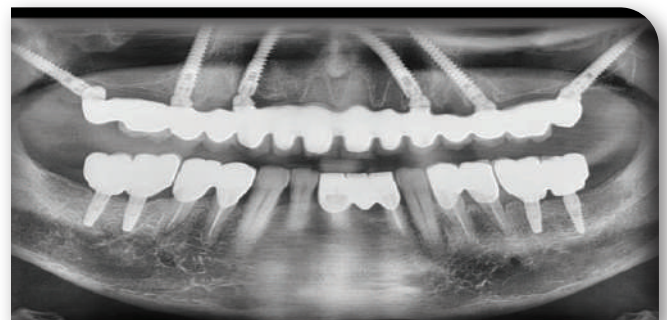
11. All on 6 pterygoid implants



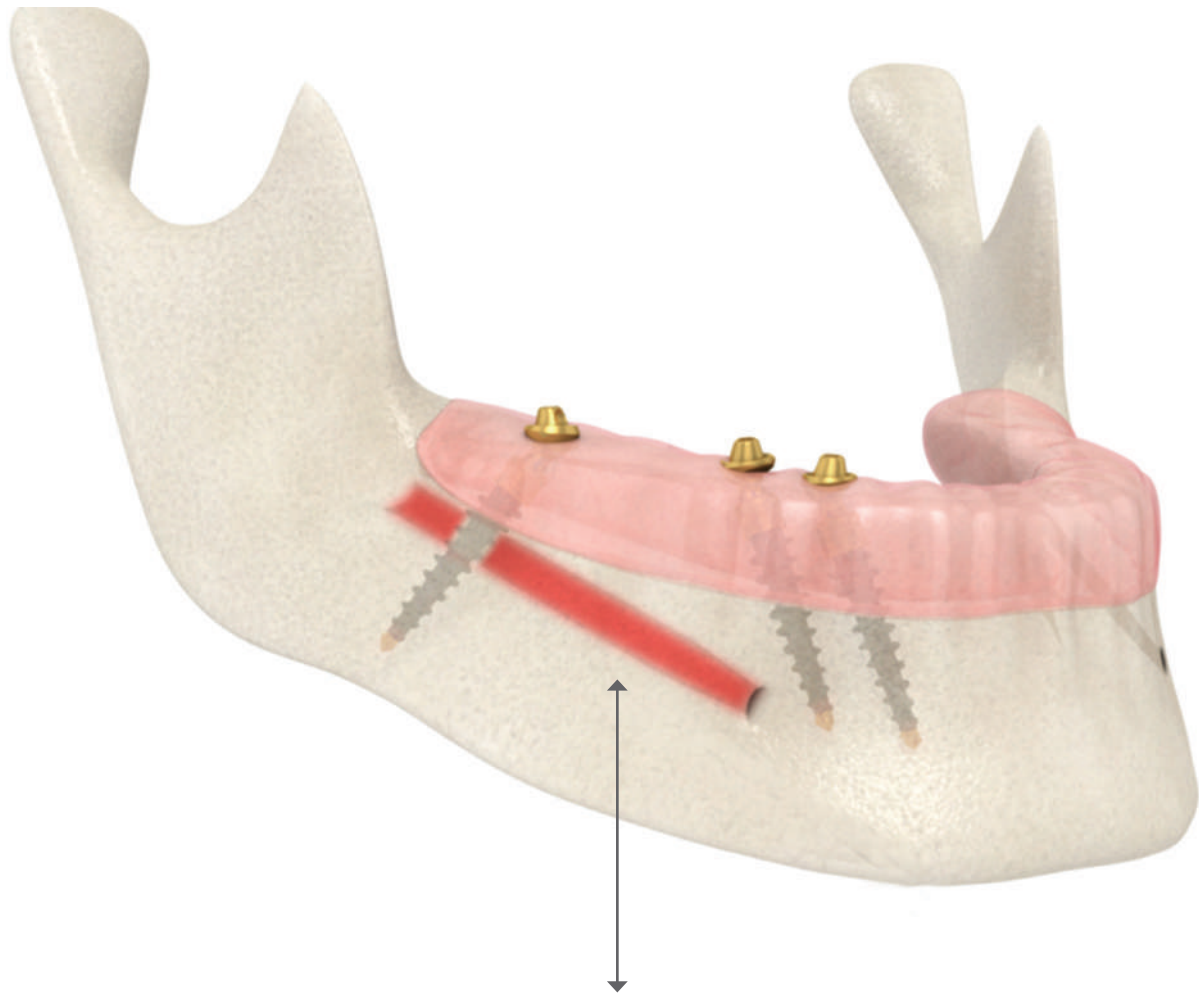
12. Impressions done on the day of surgery



13. Final results



14. Immediate loading + no cantilever + screw retained prosthesis in just 2 days with all tilt protocol

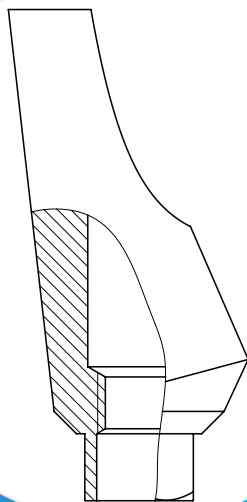
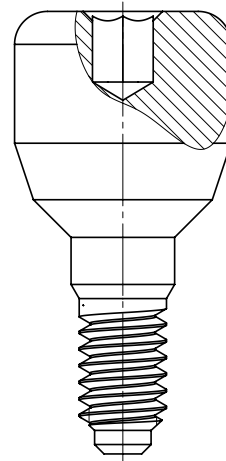


nerve bypass technique

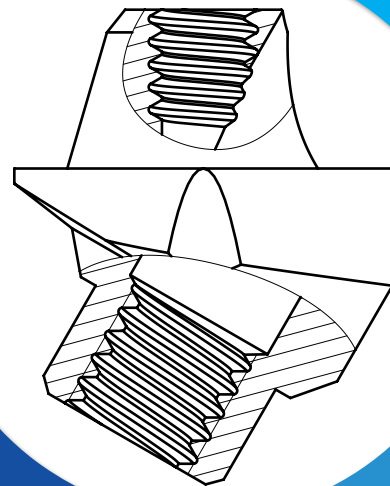
INTERNAL HEX

prosthetics
solutions

healing abutments



angulated abutment



multi unit

Healing Caps

Diameter 3.3 mm Slim *for 2.9 mm implant

Cat No.	BIO-H3302	BIO-H3303	BIO-H3304	BIO-H3305	BIO-H3306	BIO-H3307
Height	2.00 mm	3.00 mm	4.00 mm	5.00 mm	6.00 mm	7.00 mm



Diameter 3.8 mm Standard

Cat No.	BIO-H3802	BIO-H3803	BIO-H3804	BIO-H3805	BIO-H3806	BIO-H3807
Height	2.00 mm	3.00 mm	4.00 mm	5.00 mm	6.00 mm	7.00 mm



Diameter 4.6 mm Standard

Cat No.	BIO-H4602	BIO-H4603	BIO-H4604	BIO-H4605	BIO-H4606	BIO-H4607
Height	2.00 mm	3.00 mm	4.00 mm	5.00 mm	6.00 mm	7.00 mm



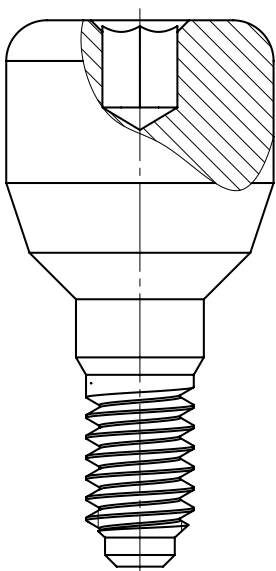
Diameter 5.5 mm Wide

Cat No.	BIO-H5502	BIO-H5503	BIO-H5504	BIO-H5505	BIO-H5506	BIO-H5507
Height	2.00 mm	3.00 mm	4.00 mm	5.00 mm	6.00 mm	7.00 mm



Diameter 6 mm Wide

Cat No.	BIO-H6302	BIO-H6303	BIO-H6304	BIO-H6305	BIO-H6306	BIO-H6307
Height	2.00 mm	3.00 mm	4.00 mm	5.00 mm	6.00 mm	7.00 mm



Healing
Caps

Straight Abutments



Straight Abutment

Cat No.	BIO-A5908	BIO-A5909	BIO-A5911	BIO-A5912	BIO-A5601	BIO-A5602
Height	8.5 mm	9.5 mm	10.5 mm	11 mm	8.5 mm	10.5 mm



Straight Shoulder Abutment

Cat No.	BIO-A4801	BIO-A4802	BIO-A4803	BIO-A4804	BIO-A5001	BIO-A5002
Height	8.5 mm	9.5 mm	10.5 mm	11.5 mm	9.5 mm	9.5 mm
Shoulder	1.00 mm	2.00 mm	3.00 mm	4.00 mm	1.70 mm	1.70 mm



Straight Shoulder Abutment

Cat No.	BIO-A5300	BIO-A5301	BIO-A5302
Height	8.5 mm	8.5 mm	8.5 mm
Shoulder	0.50 mm	1.50 mm	2.50 mm



Straight smooth Abutment

Cat No.	BIO-A6006	BIO-A6008	BIO-A6011
Height	6.00 mm	8.00 mm	11.00 mm
Shoulder	N/A	N/A	N/A



Straight Anatomic Abutment

Cat No.	BIO-A4601	BIO-A4602	BIO-A4603	BIO-A4604
Height	9.00 mm	10.00 mm	11.00 mm	12.00 mm
Shoulder	1.00 mm	2.00 mm	3.00 mm	4.00 mm



Slim straight Abutment *for 2.9 mm implant

Cat No.	BIO-A5909-S	BIO-A5911-S
Height	9.0 mm	11.0 mm



Slim straight Anatomic Abutment *for 2.9 mm implant

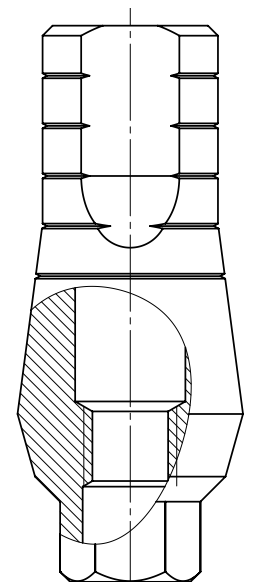
Cat No.	BIO-A3801-S	BIO-A3802-S	BIO-A3803-S	BIO-A3804-S
Height	9.00 mm	10.00 mm	11.00 mm	12.00 mm
Shoulder	1.00 mm	2.00 mm	3.00 mm	4.00 mm



Screw for Abutment

Included with all types of abutments

Cat No.	BIO-S8324
---------	-----------



Straight
Abutments

Angulated Abutments

15°

15° Standard Abutment

Cat No.	BIO-A3207	BIO-A3208	BIO-A3209	BIO-A3211
Height	7 mm	8.5 mm	9 mm	11 mm



15° Anatomic Standard Abutment

Cat No.	BIO-A2400	BIO-A2401	BIO-A2402	BIO-A2403	BIO-A2404
Height	8.5 mm	9.5 mm	10.5 mm	11.5 mm	12.5 mm
Shoulder	0.80 mm	1.00 mm	2.00 mm	3.00 mm	4.00 mm



15° Standard Slim Abutment *for 2.9 mm implant

Cat No.	BIO-A3209-S	BIO-A3211-S
Height	9 mm	11 mm



15° Anatomic Slim Abutment *for 2.9 mm implant

Cat No.	BIO-A2401-S	BIO-A2402-S	BIO-A2403-S	BIO-A2404-S
Height	9.5 mm	10.5 mm	11.5 mm	12.5 mm
Shoulder	1.00 mm	2.00 mm	3.00 mm	4.00 mm



25°

25° Standard Abutment

Cat No.	BIO-A3407	BIO-A3409	BIO-A3411
Height	7 mm	9 mm	11 mm



25° Standard Slim Abutment *for 2.9 mm implant

Cat No.	BIO-A3407-S
Height	7 mm



25° Anatomic Standard Abutment

Cat No.	BIO-A2601	BIO-A2602	BIO-A2603	BIO-A2604
Height	9.5 mm	10.5 mm	11.5 mm	12.5 mm
Shoulder	1.00 mm	2.00 mm	3.00 mm	4.00 mm



35°

35° Standard Abutment

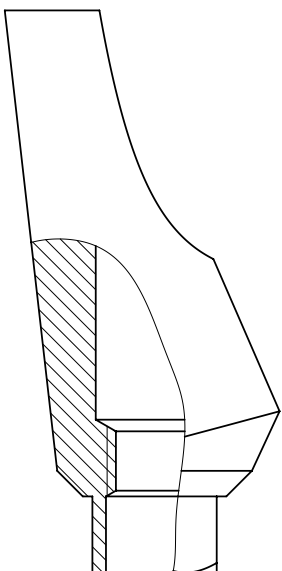
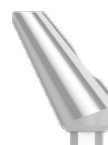
Cat No.	BIO-A3509
Height	9 mm



45°

45° Standard Abutment

Cat No.	BIO-A4509
Height	9 mm



Angulated Abutments

Temporary Peek Abutments

Peek Straight Anatomic Abutment



Cat No.	BIO-P4510	BIO-P4520	BIO-P4530
Height	9 mm	10 mm	11 mm
Shoulder	1.00 mm	2.00 mm	3.00 mm

Peek Anatomic Abutment 15°



Cat No.	BIO-P2401	BIO-P2402	BIO-P2403
Height	9 mm	10 mm	11 mm
Shoulder	1.00 mm	2.00 mm	3.00 mm

Peek Anatomic Abutment 25°



Cat No.	BIO-P2601	BIO-P2602	BIO-P2603
Height	9 mm	10 mm	11 mm
Shoulder	1.00 mm	2.00 mm	3.00 mm

Castable Abutments



Castable Narrow Abutment

Cat No.	BIO-C1001 NON-HEX	BIO-C1002 HEX
---------	----------------------	------------------



Slim Castable Abutment *for 2.9 mm implant

Cat No.	BIO-C1001-S NON-HEX	BIO-C1002-S HEX
---------	------------------------	--------------------



Castable Abutment

Cat No.	BIO-C2003 NON-HEX	BIO-C2004 HEX
---------	----------------------	------------------



Ucla Abutment

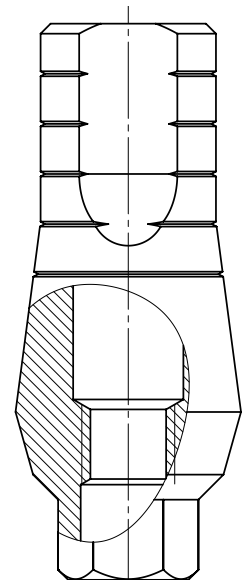
Cat No.	BIO-C2001 UCLA
---------	-------------------



Screw for Abutment

Included with all types of abutments

Cat No.	BIO-S8324
---------	-----------



Temporary Peek Abutments

Impression components

Transfer For Open Tray

Cat No.	OPT-4708	OPT-4714
Diameter	4.70 mm	4.70 mm
Height	8.00 mm	14.00 mm



Slim Transfer For Open Tray *for 2.9 mm implant

Cat No.	BIO-T4012-S
Diameter	4.75 mm
Height	12.00 mm



Transfer For Close Tray

Cat No.	CPT-5008	CPT-5012
Diameter	5.00 mm	5.00 mm
Height	8.00 mm	12.00 mm



Slim Transfer For Close Tray *for 2.9 mm implant

Cat No.	BIO-T3507-S	BIO-T3601-S
Diameter	3.85 mm	4.75 mm
Height	12.00 mm	8.00 mm



Click Transfer For Close Tray

Cat No.	BIO-T3409	BIO-T3413
Diameter	4.70 mm	4.70 mm
Height	9.00 mm	13.00 mm



Ball Transfer

Cat No.	BIO-T3801	BIO-T3802	BIO-T3803	BIO-T3804	BIO-T3805
Diameter	4.75 mm	4.75 mm	4.75 mm	4.75 mm	4.75 mm
Shoulder	1.00 mm	2.00 mm	3.00 mm	4.00 mm	5.00 mm



Plastic Cap For Ball Transfer

Cat No.	BIO-T4401	BIO-T4402
Diameter	4.75 mm	4.75 mm
Height	7.00 mm	10.00 mm



Screw for Transfer

Cat No.	BIO-S1307	BIO-S1610	BIO-S2418
Height	13.00 mm	16.00 mm	24.00 mm



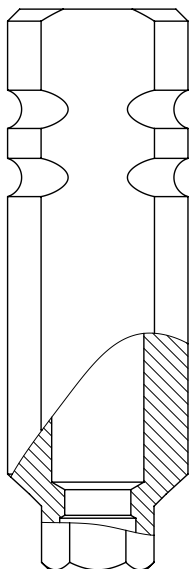
Implant Analog

Cat No.	BIO-T6404	BIO-T6405
Diameter	4.00 mm	5.00 mm
Height	12.75 mm	12.75 mm



Slim Implant Analog *for 2.9 mm implant

Cat No.	BIO-T6404-S
Diameter	4.00 mm
Height	12.75 mm



Impression Components

Ball attachment



Ball Attachment

Cat No.	BIO-T1200	BIO-T1201	BIO-T1202	BIO-T1203	BIO-T1204	BIO-T1205	BIO-T1206	BIO-T1207
Height	0.5 mm	1 mm	2 mm	3 mm	4 mm	5 mm	6 mm	7 mm



Slim Ball Attachment *for 2.9 mm implant

Cat No.	BIO-T1200-SL	BIO-T1201-SL	BIO-T1202-SL	BIO-T1203-SL	BIO-T1204-SL	BIO-T1205-SL	BIO-T1206-SL	BIO-T1207-SL
Height	0.5 mm	1 mm	2 mm	3 mm	4 mm	5 mm	6 mm	7 mm



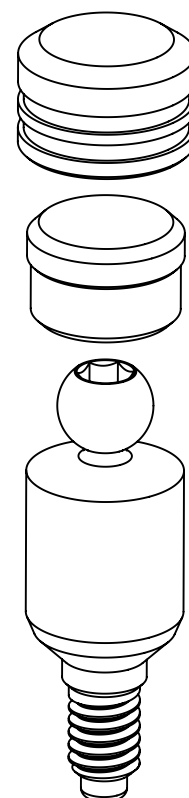
Metal Cap For Ball Attachment

Cat No.	BIO-T3001
---------	-----------

Caps 2.5mm for Ball Attachment



Cat No.	BIO-T3002	BIO-T3003	BIO-T3004
	Silicone Extra soft	Silicone Soft	Silicone Standart



Ball Attachment

Locator attachment

Power Click Straight Abutment

Cat No.	BIO-PCA00	BIO-PCA01	BIO-PCA02	BIO-PCA03	BIO-PCA04	BIO-PCA05	BIO-PCA06
Height	0.5 mm	1 mm	2 mm	3 mm	4 mm	5 mm	6 mm



Metal Cap For Power Click Attachment

Cat No.	BIO-PCMC0
---------	-----------



Silicone Sealed Ring

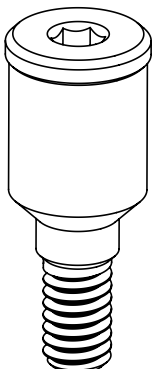
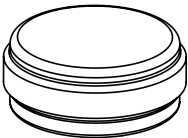
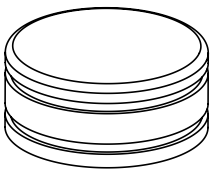
Cat No.	BIO-PCSSR
---------	-----------



Silicone Softness



Cat No.	BIO-CN088	BIO-CN087	BIO-CN086	BIO-CN090
	Extra soft	soft	standart	Hard



Locator Attachment

Angulated attachment

Versatile Angulated Connection Base



Cat No.	BIO-VAC09-I	BIO-VAC18-I	BIO-VAC30-I
Diameter	4.60 mm	4.60 mm	4.60 mm
Angle	9°	18°	30°

Ball Attachment For V.A.C

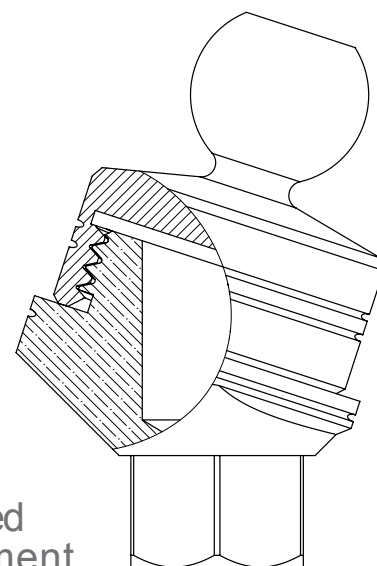


Cat No.	BIO-BVAC2-I	BIO-BVAC3-I	BIO-BVAC4-I	BIO-BVAC5-I
Height	2.00 mm	3.00 mm	4.00 mm	5.00 mm

Power Click Attachment For V.A.C



Cat No.	BIO-PVAC2-I	BIO-PVAC3-I	BIO-PVAC4-I	BIO-PVAC5-I
Height	2.00 mm	3.00 mm	4.00 mm	5.00 mm



Angulated Attachment

Multi-units abutments

Multi-Unit Straight Abutment

Cat No.	BIO-M0101	BIO-M0102	BIO-M0103	BIO-M0104	BIO-M0105	BIO-M0106
Height	1.00 mm	2.00 mm	3.00 mm	4.00 mm	5.00 mm	6.00 mm



Slim Multi-Unit Straight Abutment *for 2.9 mm implant

Cat No.	BIO-M0101-S	BIO-M0102-S	BIO-M0103-S
Height	1.00 mm	2.00 mm	3.00 mm



Multi-Unit Plastic castable Sleeve

Cat No.	BIO-MPLD
---------	----------



Multi-Unit Titanium Sleeve

Cat No.	BIO-MUTSDL
---------	------------



Multi-Unit Short Titanium Sleeve

Cat No.	BIO-MUTSDH
---------	------------



Healing Cap For Multi-Unit

Cat No.	BIO-MUHC1
---------	-----------



Transfer For Multi-Unit

Cat No.	BIO-MUTRIO
---------	------------



Analog For Multi-Unit

Cat No.	BIO-DAMU
---------	----------



Screw for Multi-Unit

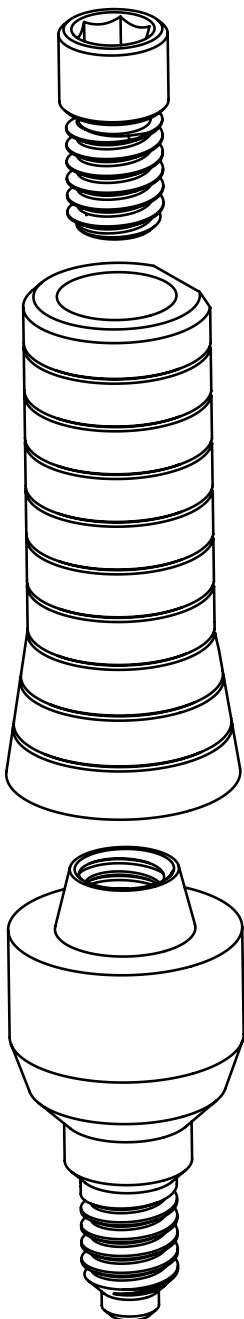
Included with all types of abutments

Cat No.	BIO-MSC
---------	---------



Straight MU Insertion Driver

Cat No.	BIO-X1415
---------	-----------



Multi-Units
Abutments

Angulated multi-unit



Angulated Multi-Unit Abutment

Cat No. | BIO-MU09 | BIO-MU18 | BIO-MU30 | BIO-MU40 | BIO-MU50 | BIO-MU60 |

* All angles are available heights 1-3



Slim Angulated Multi-Unit Abutment *for 2.9 mm implant

Cat No. | BIO-MU09-S | BIO-MU18-S | BIO-MU30-S | BIO-MU40-S | BIO-MU50-S |

* All angles are available heights 1-3



Multi-Unit Plastic Castable Sleeve

Cat No. | BIO-MPLD |



Multi-Unit Titanium Sleeve

Cat No. | BIO-MUTSDL |



Multi-Unit Short Titanium Sleeve

Cat No. | BIO-MUTSDH |



Healing Cap For Multi-Unit

Cat No. | BIO-MUHC1 |



Close Transfer For Multi-Unit

Cat No. | BIO-MUTRIC |



Open Transfer For Multi-Unit

Cat No. | BIO-MUTRIO |



Analog For Multi-Unit

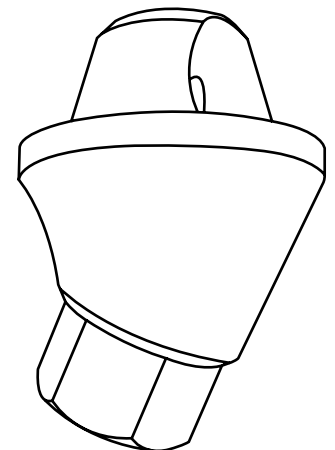
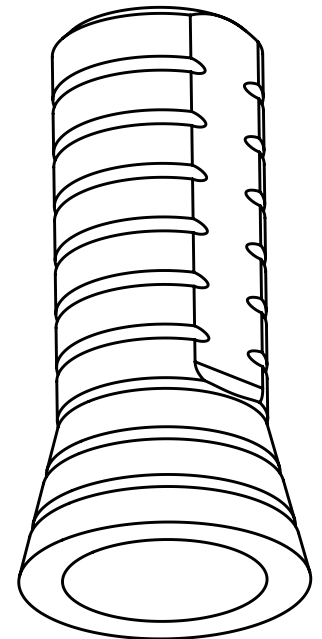
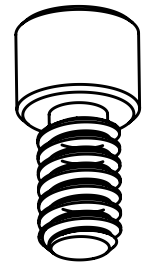
Cat No. | BIO-DAMU |



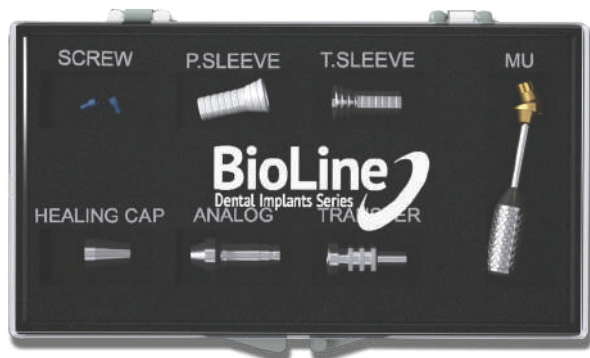
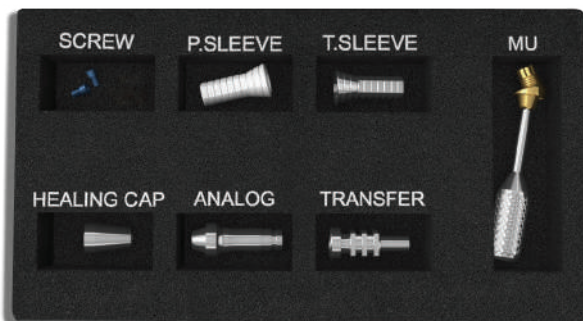
Screw for Angulated Multi-Unit

Included with all types of abutments

Cat No. | BIO-MSD |



Angulated
Multi-Unit



All the needs for a successful screw retained restoration in one user friendly premium set. Simplify the whole procedure for single / multiple units.

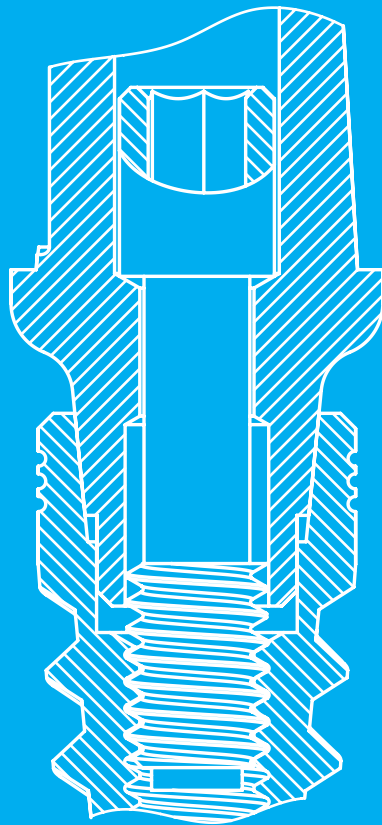
Multi-unit premium set contain:

- Straight / angulated multi-unit abutment
- Castable sleeve
- Titanium sleeve
- Healing cap
- Transfer copy
- Lab analog
- Prosthetic's screw



full arch impression coping
screw retained prosthetics

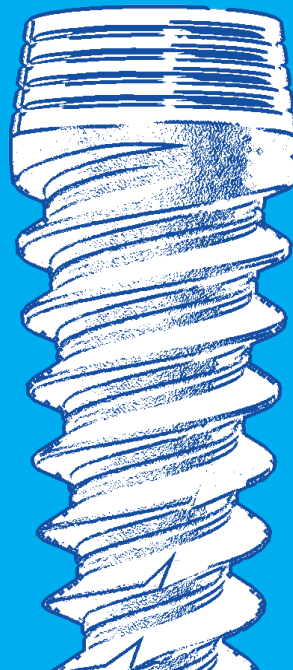
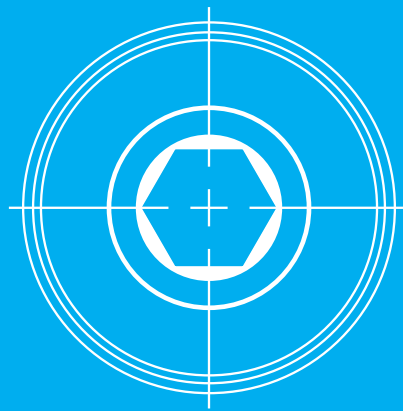
CONICAL CONNECTION IMPLANTS



Conical connection advantage's

- Easy simple to use
- Sealed connection reduce bacteria risk
- Prevent screw loosening
- High mechanical strength capacity
- High accuracy and easy future maintenance

NEW ERA OF CONICAL CONNECTION IMPLANT SYSTEM



ICONIC

Our series of conical connection implants based on our proved and familiar structure of spiral implant [SDI] which become a best seller proven product over more than 32 countries worldwide more than 12 years. Conical connection design brings the solution for ensuring long term stability of restoration parts connected to the implant. The conical geometry of implants connection area and prosthetic parts spread on wider basis and create cold welding between the parts with almost no load on the traditional titanium screw, this geometry also double the mechanical stance of the implant-abutment during the use by patient for many years to come. The connection point is 100% sealed and tightened.

ICONIC Implant Advantages

- user friendly
- easy & fast incision lead by the active design
- improved bone cutting and condensing ability's
- higher BIC (Bone & implant contact) lead for excellent primary stability
- can be used for immediate placement & loading
- reduce Bone resorption
- **Biofix** Biological surface for fast healing and long term osseointegration.



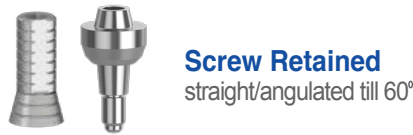
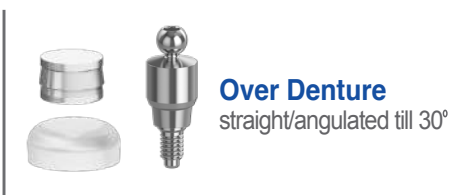
Coronal Surface Option

ICONIC GOLD

a machined, anodized surface of the coronal portion, to ensure great protection & prevention of peri implantitis, especially in equal crestal & tissue level positions

ordering information- add G to the code mention at the table below

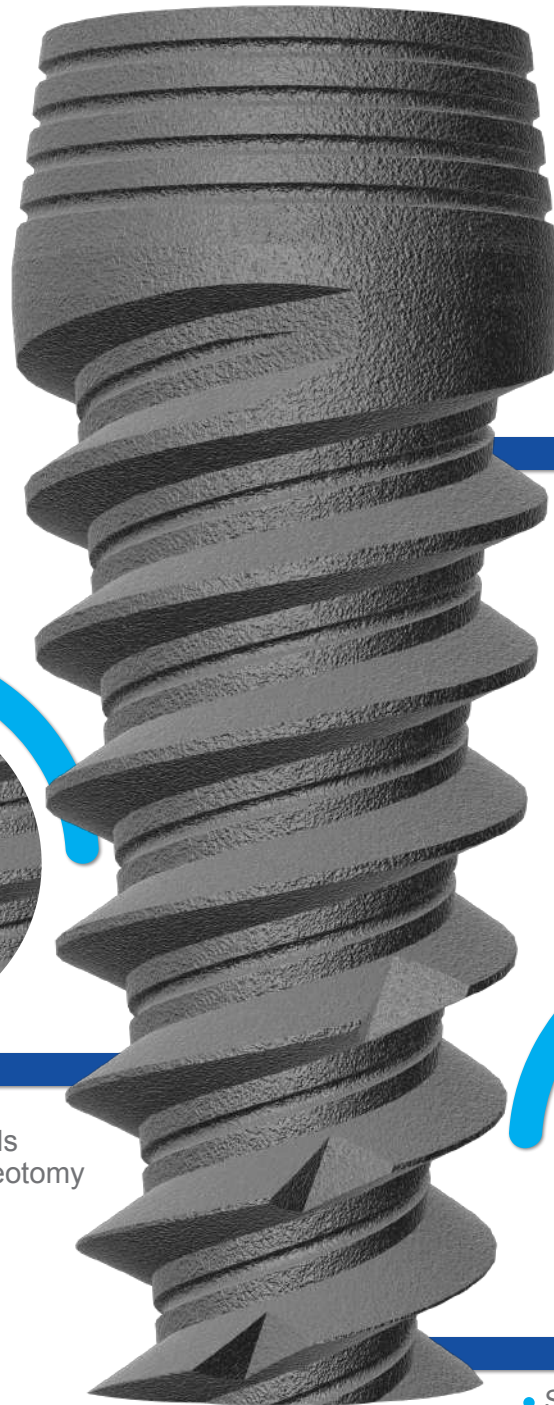
RESTORATION OPTIONS:



Ordering information:

	Dia ▶	3.75	4.2	5.0
Length	8	BIO-CSD3708	BIO-CSD4208	BIO-CSD5008
	10	BIO-CSD3710	BIO-CSD4210	BIO-CSD5010
	11.5	BIO-CSD3711	BIO-CSD4211	BIO-CSD5011
	13	BIO-CSD3713	BIO-CSD4213	BIO-CSD5013
	16	BIO-CSD3716	BIO-CSD4216	BIO-CSD5016

Conical Connection



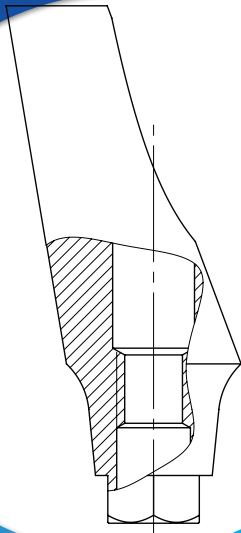
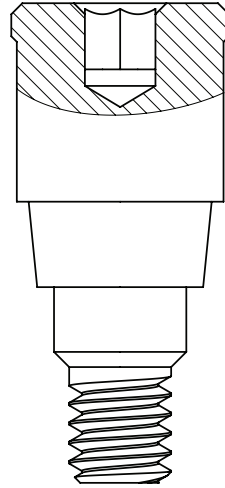
- Anti-bacterial anodized coating
- Micro rings -greater surface area
- Symmetrical neck – better load distribution

- Tapered body
- High condensing threads
- Sharp threads -self osteotomy creation
- High Primary Stability

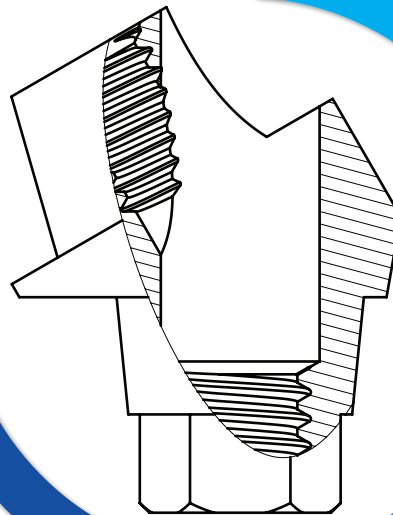
- Sharp & deep thread for easy incision
- Narrow core - self tapping
- Prevent damage to the anatomical structures

CONICAL CONNECTION
prosthetic's solutions

healing abutments



angulated abutment



multi unit

C-C prosthetic's



Conical Healing Cap Diameter 4.0 mm Standard

Cat No.	CSD-H4002	CSD-H4003	CSD-H4004	CSD-H4005	CSD-H4006	CSD-H4007
Height	2.00 mm	3.00 mm	4.00 mm	5.00 mm	6.00 mm	7.00 mm



Diameter 5.0 mm Wide

Cat No.	CSD-H5002	CSD-H5003	CSD-H5004	CSD-H5005	CSD-H5006	CSD-H5007
Height	2.00 mm	3.00 mm	4.00 mm	5.00 mm	6.00 mm	7.00 mm



Conical Straight Abutment

Cat No.	CSD-A5909	CSD-A5911
Height	9.00 mm	11.00 mm



Conical Straight Shoulder Abutment

Cat No.	CSD-A4801	CSD-A4802	CSD-A4803	CSD-A4804
Height	1.00 mm	2.00 mm	3.00 mm	4.00 mm



Conical Anguletad Abutment 15°

Cat No.	CSD-A3207	CSD-A3209	CSD-A3211
Height	7.00 mm	9.00 mm	11.00 mm



Conical Anguletad Abutment 25°

Cat No.	CSD-A3407	CSD-A3409	CSD-A3411
Height	7.00 mm	9.00 mm	11.00 mm

C-C prosthetic's

Conical Ball Attachment

Cat No.	CSD-T1201	CSD-T1202	CSD-T1203	CSD-T1204	CSD-T1205	CSD-T1206	CSD-T1207
Height	1.00 mm	2.00 mm	3.0 mm	4.00 mm	5.00 mm	6.00 mm	7.00 mm



Conical Locator

Cat No.	CSD-PCA01	CSD-PCA02	CSD-PCA03	CSD-PCA04	CSD-PCA05	CSD-PCA06
Height	1.00 mm	2.00 mm	3.0 mm	4.00 mm	5.00 mm	6.00 mm



Conical straight Multi Unit

Cat No.	CSD-MO101	CSD-MO102	CSD-MO103	CSD-MO104	CSD-MO105	CSD-MO106
Height	1.00 mm	2.00 mm	3.0 mm	4.00 mm	5.00 mm	6.00 mm



Conical Angulated multi Unit

Cat No.	CSD-MU09	CSD-MU18	CSD-MU30	CSD-MU40	CSD-MU50	CSD-MU60
degrees	9°	18°	30°	40°	50°	60°



Conical Transfer

Cat No.	CSD-T3507	CSD-T3511	CSD-T4012
diameter	3.85 mm	4.75 mm	4.80 mm
height	12.0mm	8.0 mm	14.8 mm



Conical Lab Analog

Cat No.	CSD-DAR
height	12.75 mm



C-C prosthetic's



Conical Motor Mount

Cat No.	CSD-X1015
height	28.0 mm



Conical Implants Driver

Cat No.	CSD-X2307	CSD-X2310	CSD-X2315
height	7.0 mm	10.0 mm	15.0 mm

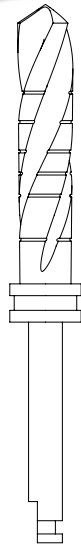


Conical Abutment Remover

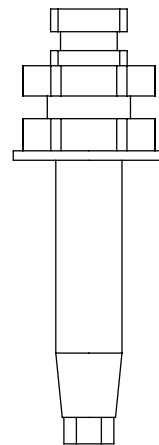
Cat No.	BIO-HCRA
height	7.0 mm

**UNIVERSAL
INSTRUMENTS**
line for all
procedures

3 step drill



universal drill



implant driver

Drills



Countersink

Cat No.	BIO-D1034	BIO-D1056
Diameter	∅ 3.80-4.20 mm	∅ 5.00-6.00 mm



Marking

Cat No.	BIO-D3410
---------	-----------



Extension

Cat No.	BIO-D3412
---------	-----------



Standard 16 mm

Cat No.	BIO-D1220	BIO-D1225	BIO-D1228	BIO-D1232	BIO-D1236	BIO-D1242	BIO-D1252
Diameter	∅ 2.00 mm	∅ 2.50 mm	∅ 2.8 mm	∅ 3.2 mm	∅ 3.65 mm	∅ 4.20 mm	∅ 5.20 mm



Trephine

Cat No.	BIO-D2020	BIO-D2030	BIO-D2040	BIO-D2050
Diameter	∅ 2.00-3.00 mm	∅ 3.00-4.00 mm	∅ 4.00-5.00 mm	∅ 5.00-6.00 mm



Cortical Drill

Cat No.	BIO-CD20	BIO-CD25	BIO-CD28	BIO-CD32
Diameter	2.0 mm	2.5 mm	2.8 mm	3.2 mm

Rachet

| Cat No. | BIO-X1020 |



Torque Rachet

| Cat No. | BIO-X1021 |



Surgical Screw Driver Hex 6.35 mm

| Cat No. | BIO-X1023 |



Surgical Screw Driver Hex 2.42 mm

| Cat No. | BIO-X1022 |



Depth Probe

| Cat No. | BIO-X1025 |



Drivers



Driver Hex 1.25 mm

Cat No.	BIO-X2107	BIO-X1210	BIO-X1215
length	7.0 mm	10.0 mm	15.0 mm



Straight Multi-Unit Driver

Cat No.	BIO-X1415
length	15.0 mm



Driver Hex 2.42 mm

Cat No.	BIO-X2407	BIO-X2410	BIO-X2415	BIO-X2423
length	7.0 mm	10.0 mm	15.0 mm	23 mm



Slim Hex Driver 2.1 mm *for 2.9 mm implant

Cat No.	BIO-X2807	BIO-X2810	BIO-X2815
length	7.0 mm	10.0 mm	15.0 mm



Driver Hex 1.25 mm short

Cat No.	BIO-X1006
length	15.0 mm



Driver Hex 1.25 mm long

Cat No.	BIO-X1007
length	7.0 mm



SCAN ME

The All New BioLine Fully Guided Surgery Kit is a unique one of a kind rich surgical kit which contains all you need for easy, comfortable & predictable guided surgery cases followed by compatible digital library for the all major popular surgical guide planning and designing software. With the help of this state of the art kit & the digital library we can pre plan our simple & complicated dental implant cases as one , match the implants locations & positions as well as select the required abutments and pre fabricate the temporary prosthetics in prior in order to deliver it to the patient on the very same operation day in order to satisfy the patient at our best using the latest innovative technologies

Guided surgical kit contain:

Guided surgery drill	∅ 2.0 L6	GD20L06	1.25mm prosthetic hex driver	X1215
Guided surgery drill	∅ 2.0 L8	GD20L08	regular hex 2.42mm implant driver for guided surgery	RSPG
Guided surgery drill	∅ 2.0 L10	GD20L10		
Guided surgery drill	∅ 2.0 L11.5	GD20L11		
Guided surgery drill	∅ 2.0 L13	GD20L13	slim hex 2.42mm implant driver for guided surgery	RSPG-S
Guided surgery drill	∅ 2.8 L6	GD28L06	Conical connection implant driver for guided surgery	RSPG-CSD
Guided surgery drill	∅ 2.8 L8	GD28L08		
Guided surgery drill	∅ 2.8 L10	GD28L10		
Guided surgery drill	∅ 2.8 L11.5	GD28L11	1.25mm prosthetic motor driver	X1033
Guided surgery drill	∅ 2.8 L13	GD28L13		
Guided surgery drill	∅ 3.2 L6	GD32L06		
Guided surgery drill	∅ 3.2 L8	GD32L08		
Guided surgery drill	∅ 3.2 L10	GD32L10	Slim implant hex 2.10mm motor driver for guided surgery	MDSG-S
Guided surgery drill	∅ 3.2 L11.5	GD32L11		
Guided surgery drill	∅ 3.2 L13	GD32L13		
Guided surgery drill	∅ 3.65 L6	GD36L06		
Guided surgery drill	∅ 3.65 L8	GD36L08	Torque ratchet	X1021
Guided surgery drill	∅ 3.65 L10	GD36L10		
Guided surgery drill	∅ 3.65 L11.5	GD36L11		
Guided surgery drill	∅ 3.65 L13	GD36L13		
Guided surgery drill	∅ 4.2 L6	GD42L06		
Guided surgery drill	∅ 4.2 L8	GD42L08		
Guided surgery drill	∅ 4.2 L10	GD42L10		
Guided surgery drill	∅ 4.2 L11.5	GD42L11		
Guided surgery drill	∅ 4.2 L13	GD42L13		



SCAN ME

The All New BioLine Professional Surgical Kit is fully loaded with the all tools you need in order to operate dental implant cases like a pro !
the professional surgical kit contains a state-of-the-art step titanium nitride coated drills, a unique torque ratchet with maximum torque capacity of 70 Nc, depth probe with a bone depth & tissue height measurement option and lot more.

The BioLine Professional Surgical kit is extremely user-friendly and simplifies dental implantology procedures!

Professional Surgical Kit Contain:

Torque ratchet 6.35 hex	BIO-X1021	Implant motor mount 2.42 hex short	BIO-X1015
Depth probe till 16mm length	BIO-X1025	Implant motor mount 2.42 hex long	BIO-X1014
Marking drill	BIO-D3410	Prosthetics motor mount 1.25 hex	BIO-X1008
2 pilot drill	BIO-D1220	Prosthetics driver 1.25 hex short	BIO-X1207
2.5 drill	BIO-D1225	Prosthetics driver 1.25 hex long	BIO-X1215
2.8 drill	BIO-D1228	Implant driver 2.42 hex short	BIO-X2607
3.2 drill	BIO-D1232	Implant driver 2.42 hex long	BIO-X2615
3.65 drill	BIO-D1236	Slim implant driver 2.1 hex regular	BIO-X2810
4.2 drill	BIO-D1242	Conical implant driver regular	BIO-X2315
5.2 drill	BIO-D1252	X2 parallel pin short	BIO-X1028
3.75-4.2 countersink drill	BIO-D1034	X2 parallel pin long	BIO-X1029
5-6 countersink drill	BIO-D1056	Prosthetic hand driver long	BIO-X1006
Drill extender	BIO-D3142	35 Degrees abutment	BIO-A3509
15 Degrees abutment	BIO-A3211	45 Degrees abutment	BIO-A4509
25 Degrees abutment	BIO-A3411		



The all new BioLine Unique Pterygoid Surgical kit is one of the richest dedicated pterygoids – bi cortical implantology surgical kits in todays market. Contains state of the art titanium nitride coated long drills along with highly sharp and tapered cortical drills, wide range of implant & prosthetics tightening drivers along with a complete range of angle indicators, the pterygoid kit is giving a straightforward answer for any kind of pterygomaxillary / by cortical implant positioning and its prosthetic protocol

The BioLine Pterygoid Surgical Kit is extremely user-friendly and simplifies dental implantology procedures!

Pterygoid surgical kit contain:

Short implant driver 2.42mm hex	BIO-X2607
Medium implant driver 2.42mm hex	BIO-X2610
Long implant driver 2.42mm hex	BIO-X2622
Short prosthetic's driver 1.25mm hex	BIO-X1207
Medium prosthetic's driver 1.25mm hex	BIO-X1210
Long prosthetic's driver 1.25mm hex	BIO-X1215
15 degrees dummy abutment	BIO-A3209
25 degrees dummy abutment	BIO-A3409
35 degrees dummy abutment	BIO-A3509
45 degrees dummy abutment	BIO-A4509
Marking drill sharp	BIO-D3410
Pterygoid drill 2 step 1.2-2.0	BIO-PTDRILL1520
Pterygoid drill 2 step 2.5-2.8	BIO-PTDRILL2528
Pterygoid drill 2 step 3.2-3.65	BIO-PTDRILL3236
Surgical screw long driver	BIO-X1023
Pterygoid depth probe 25mm	BIO-PTR01

Zygomatic kit



SCAN ME

The all new BioLine Unique Zygomatic Surgical kit is one of the richest dedicated Zygomatic implantology surgical kits in today's market.

Contains state of the art titanium nitride coated long & short drills along with wide range of diamond burs in different roughness options for the initial tunneling preparation as well as motor driven & ratchet driven implant increment drivers & a unique and super useful hand grip driver and long bendable depth probe which can act as a manual guide for the drilling angulation. The kit is compatible with the Bio Guide System – unique & revolutionary guided surgery specifically designed for zygomatic implantology.

The BioLine Zygomatic Surgical Kit is extremely user-friendly and simplifies dental implantology procedures!

Zygomatic surgical kit contain:

Marking drill sharp	BIO-D3410
Zygoma drill 3 step long 2-2.5-3mm	BIO-ZIGDRILL2253/L
Zygoma drill 3 step long 2-2.5-3mm for 3.75mm implant	BIO-ZIGDRILL2253/L
Zygoma drill 2 step long 2.8-3.2mm	BIO-ZIGDRILL2832/L
Zygoma drill long 3.2mm	BIO-ZIGDRILL32/L
Zygoma drill 3 step short 2-2.5-3mm	BIO-ZIGDRILL2253/S
Zygoma drill 3 step short 2-2.5-3mm for 3.75mm implant	BIO-ZIGDRILL2253/S
Zygoma drill 2 step short 2.8-3.2mm	BIO-ZIGDRILL2832/S
Zygoma drill short 3.2mm	BIO-ZIGDRILL32/S
Diamond bur fine	BIO-DBF
Diamond bur medium	BIO-DBM
Diamond bur coarse	BIO-DBC
Surgical screw driver for 2.42mm hex	BIO-X1022
Surgical screw driver for 6.35mm hex	BIO-X1023
Zygoma depth probe 60mm	BIO-SPR01



SCAN ME

Uniquely designed & fully loaded , the All New BioLine Single Piece Implants Kit contain all required tools in order to successfully place Single Piece Dental Implants in various clinical indications, with a wide range of osteotomy drills , torque ratchet with maximum torque capacity of 70 NC and wide range of motor & ratchet driven implant increment drivers for the compressive, basal & multi-unit implant system.

The BioLine single piece implants kit is extremely user-friendly and simplifies dental implantology procedures!

Single Piece Kit contain:

Torque ratchet hex 6.35
Depth probe till 16mm length
Drill extender
Ratchet drill extender
Motor driver for CC/BC implants short
Motor driver for CC/BC implants long
Ratchet driver for CC/BC implants short
Ratchet driver for CC/BC implants long
Ratchet driver for CMU/BMU implants
Ratchet driver for CMU/BMU implants bending
2.0 mm standard drill
2.8 mm standard drill
3.2 mm standard drill
3.65mm standard drill
4.2 mm standard drill
2.0 mm cortical drill
2.5 mm cortical drill
2.8 mm cortical drill
3.2 mm cortical drill

BIO-X1021
BIO-X1025
BIO-D3142
BIO-D3414
BIO-SPMK10
BIO-SPMK15
BIO-SPK10
BIO-SPK15
BIO-X1600
CMU-KEY
BIO-D1220
BIO-D1228
BIO-D1232
BIO-D1236
BIO-D1242
BIO-CD20
BIO-CD25
BIO-CD28
BIO-CD32

Digital Components

Digital Components For RP Connection :



t base with hex

Cat No.	BIO-TBH
Height	5.0 mm



t base non hex

Cat No.	BIO-TBN
Height	5.0 mm



Scan Body

Cat No.	BIO-SBR
Height	9.0 mm



Digital Analog

Cat No.	BIO-DAR
---------	---------

Digital Component For Slim 2.1mm Connection :



T Base With Slim Hex

Cat No.	BIO-TBS
Height	5.0 mm



Scan Body For slim Connection

Cat No.	BIO-SBS
Height	9.0 mm



Digital Analog For Slim Connection

Cat No.	BIO-DAS
---------	---------

Digital Components For Conical Connection:



conical t base

Cat No.	CSD-TBH
Height	5.0 mm



Scan Body For Conical Connection

Cat No.	CSD-SBR
Height	9.0 mm



Digital Analog For Conical Connection

Cat No.	CSD-DAR
---------	---------

Digital Components For Multi Unit Abutment :



T-Base For Multi Unit Abutment

Cat No.	BIO-DTS-S
---------	-----------



Scan Body For Multi Unit Abutment

Cat No.	BIO-SBMU
---------	----------



Digital Analog For Multi Unit Abutment

Cat No.	BIO-DAMU
---------	----------

Digital Library is available for Free download at our website: www.BioLine-Implants.de
for any clarifications & technical support feel free to contact us at: Info@BioLine-implants.de



Notes: _____

All rights are reserved.
no part of this publication may be reproduced, stored in a retrieval system or transmitted in any form or by any form or by any means, electronic, mechanical, photocopying, recording or otherwise, without prior permission of the publisher.
warning: only a licensed dentist should use these products.



Bioline Dental GmbH &Co.KG

Plauner Str. 165-163. 13053 Berlin, Germany

Tel +49 (0) 1744616565

info@bioline-implants.de

EC **REP** Obelis ^{SA}

European Authorised Representative Center Registered

Address:

Bd. General Wahis 53 1030 Brussels-Belgium

www.obelis.net

Tel: +32 (0)2 732 59 54

Customer Support:

info@bioline-implants.de

www.bioline-implants.de

WWW.BIOLINE-IMPLANTS.DE
