



# Certificate of Analysis

QA SAMPLE - INFORMATIONAL ONLY

1 of 3

ICAL ID: 20221021-030  
Sample: CA221021-022-032  
WAP  
Strain: WAP  
Category: Plant

Ranchera Familia  
Lic. #  
34876 Sunflower Lane  
Squaw Valley, CA 93675  
Lic. #

Batch#:   
Batch Size Collected:   
Total Batch Size:   
Collected: 10/24/2022; Received: 10/24/2022  
Completed: 10/24/2022

Moisture <b>7.2%</b> Water Activity <b>0.395 aw</b>	Total THC <b>0.75%</b>	Total CBD <b>15.52%</b>	Total Cannabinoids <b>16.88%</b>	Total Terpenes <b>NT</b>
--	---------------------------	----------------------------	-------------------------------------	-----------------------------

Summary	SOP Used	Date Tested	
Batch			Pass
Cannabinoids	POT-PREP-003 High	10/24/2022	Complete
Moisture	MOISTURE-001	10/24/2022	7.2%
Water Activity	WA-PREP-001	10/24/2022	Pass - 0.395 aw
Microbials	MICRO-PREP-001	10/24/2022	Pass
Mycotoxins	PESTMYCO-LC-PREP-001	10/24/2022	Pass
Heavy Metals	HM-PREP-001	10/24/2022	Pass
Foreign Matter	FM-PREP-001	10/21/2022	Pass
Pesticides	PESTMYCO-LC-PREP-001 / PEST-GC-PREP-001	10/24/2022	Pass



Scan to see results

## Cannabinoid Profile

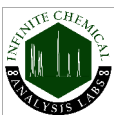
Analyte	LOQ (mg/g)	LOD (mg/g)	%	mg/g	Analyte	LOQ (mg/g)	LOD (mg/g)	%	mg/g
THCa	0.3039	0.1013	0.70	7.0	CBDV	0.1327	0.0442	ND	ND
Δ9-THC	0.2210	0.0737	0.14	1.4	CBN	0.1890	0.0630	ND	ND
Δ8-THC	0.1343	0.0448	ND	ND	CBGa	0.2948	0.0983	0.53	5.3
THCV	0.1021	0.0340	ND	ND	CBG	0.1890	0.0630	0.05	0.5
CBDa	0.3993	0.1331	16.69	166.9	CBC	0.5463	0.1821	0.09	0.9
CBD	0.1674	0.0558	0.88	8.8	<b>Total THC</b>			<b>0.75</b>	<b>7.49</b>
					<b>Total CBD</b>			<b>15.52</b>	<b>155.20</b>
					<b>Total</b>			<b>16.88</b>	<b>168.79</b>

Total THC=THCa \* 0.877 + Δ9-THC; Total CBD = CBDa \* 0.877 + CBD. LOD= Limit of Detection, LOQ= Limit of Quantitation, ND= Not Detected, NR= Not Reported. Potency is reported on a dry weight basis. Instrumentation and analysis SOPs used: Cannabinoids:UHPLC-DAD(POT-INST-005),Moisture:Moisture Analyzer(MOISTURE-001),Water Activity:Water Activity Meter(WA-INST-002), Foreign Material:Microscope(FOREIGN-001). Density measured at 19-24 °C, Water Activity measured at 0-90% RH. All QA submitted by the client, All CA State Compliance sampled using SAMPL-SOP-001.

## Terpene Profile

Analyte	LOQ (mg/g)	LOD (mg/g)	%	mg/g	Analyte	LOQ (mg/g)	LOD (mg/g)	%	mg/g
---------	------------	------------	---	------	---------	------------	------------	---	------

NR= Not Reported (no analysis was performed), ND= Not Detected (the concentration is less than the Limit of Detection (LOD)). Analytical instrumentation used: HS-GC-MS; samples analyzed according to SOP TERP-INST-003.



Infinite Chemical Analysis Labs  
8312 Miramar Mall  
San Diego, CA  
(858) 623-2740  
www.infiniteCAL.com  
Lic# C8-0000047-LIC

*Josh M Swider*

Josh Swider  
Lab Director, Managing Partner  
10/24/2022

Confident Cannabis  
All Rights Reserved  
support@confidentcannabis.com  
(866) 506-5866  
www.confidentcannabis.com



This product has been tested by Infinite Chemical Analysis, LLC using valid testing methodologies and a quality system as required by state law. All LQC samples were performed and met the prescribed acceptance criteria in 16 CCR section 15730, pursuant to 16 CCR section 15726(e)(13). Values reported relate only to the product tested. Infinite Chemical Analysis, LLC makes no claims as to the efficacy, safety or other risks associated with any detected or non-detected levels of any compounds reported herein. This Certificate shall not be reproduced except in full, without the written approval of Infinite Chemical Analysis, LLC.



# Certificate of Analysis

QA SAMPLE - INFORMATIONAL ONLY

2 of 3

ICAL ID: 20221021-030  
Sample: CA221021-022-032  
WAP  
Strain: WAP  
Category: Plant

Ranchera Familia  
Lic. #  
34876 Sunflower Lane  
Squaw Valley, CA 93675  
  
Lic. #

Batch#:   
Batch Size Collected:   
Total Batch Size:   
Collected: 10/24/2022; Received: 10/24/2022  
Completed: 10/24/2022

## Residual Solvent Analysis

Category 1	LOQ	LOD	Limit	Status	Category 2	LOQ	LOD	Limit	Status	Category 2	LOQ	LOD	Limit	Status
------------	-----	-----	-------	--------	------------	-----	-----	-------	--------	------------	-----	-----	-------	--------

NR= Not Reported (no analysis was performed), ND= Not Detected (the concentration is less then the Limit of Detection (LOD)). Analytical instrumentation used: HS-GC-MS; samples analyzed according to SOP RS-INST-003.

## Heavy Metal Screening

		LOQ	LOD	Limit	Status
	µg/g	µg/g	µg/g	µg/g	
Arsenic	0.045	0.009	0.003	0.2	Pass
Cadmium	0.072	0.002	0.001	0.2	Pass
Lead	0.073	0.004	0.001	0.5	Pass
Mercury	<LOQ	0.014	0.005	0.1	Pass

NR= Not Reported (no analysis was performed), ND= Not Detected (the concentration is less then the Limit of Detection (LOD)). Analytical instrumentation used: ICP-MS; samples analyzed according to SOP HM-INST-003.

## Microbiological Screening

	Limit	Result	Status
	CFU/g	CFU/g	
Aspergillus flavus		Not Detected	Pass
Aspergillus fumigatus		Not Detected	Pass
Aspergillus niger		Not Detected	Pass
Aspergillus terreus		Not Detected	Pass
STEC		Not Detected	Pass
Salmonella SPP		Not Detected	Pass

ND=Not Detected. Analytical instrumentation used:qPCR; samples analyzed according to SOP MICRO-INST-001.



Infinite Chemical Analysis Labs  
8312 Miramar Mall  
San Diego, CA  
(858) 623-2740  
www.infiniteCAL.com  
Lic# C8-0000047-LIC

*Josh M Swider*

Josh Swider  
Lab Director, Managing Partner  
10/24/2022

Confident Cannabis  
All Rights Reserved  
support@confidentcannabis.com  
(866) 506-5866  
www.confidentcannabis.com



This product has been tested by Infinite Chemical Analysis, LLC using valid testing methodologies and a quality system as required by state law. All LQC samples were performed and met the prescribed acceptance criteria in 16 CCR section 15730, pursuant to 16 CCR section 15726(e)(13). Values reported relate only to the product tested. Infinite Chemical Analysis, LLC makes no claims as to the efficacy, safety or other risks associated with any detected or non-detected levels of any compounds reported herein. This Certificate shall not be reproduced except in full, without the written approval of Infinite Chemical Analysis, LLC.



# Certificate of Analysis

QA SAMPLE - INFORMATIONAL ONLY

3 of 3

ICAL ID: 20221021-030  
Sample: CA221021-022-032  
WAP  
Strain: WAP  
Category: Plant

Ranchera Familia  
Lic. #  
34876 Sunflower Lane  
Squaw Valley, CA 93675  
Lic. #

Batch#:   
Batch Size Collected:   
Total Batch Size:   
Collected: 10/24/2022; Received: 10/24/2022  
Completed: 10/24/2022

## Chemical Residue Screening

Category 1	LOQ	LOD	Status	Mycotoxins	LOQ	LOD	Limit	Status		
	µg/g	µg/g	µg/g		µg/kg	µg/kg	µg/kg	µg/kg		
Aldicarb	ND	0.054	0.018	Pass	B1	ND	5	0.99	Tested	
Carbofuran	ND	0.030	0.007	Pass	B2	ND	6.05	2	Tested	
Chlordane	ND	0.075	0.025	Pass	G1	ND	10.23	3.38	Tested	
Chlorfenapyr	ND	0.075	0.025	Pass	G2	ND	5	0.78	Tested	
Chlorpyrifos	ND	0.048	0.016	Pass	Ochratoxin A	ND	19.48	6.43	20	Pass
Coumaphos	ND	0.031	0.010	Pass	Total Aflatoxins	ND		20	Pass	
Daminozide	ND	0.030	0.028	Pass						
Dichlorvos	ND	0.066	0.022	Pass						
Dimethoate	ND	0.030	0.010	Pass						
Ethoprophos	ND	0.035	0.012	Pass						
Etofenprox	ND	0.030	0.006	Pass						
Fenoxycarb	ND	0.033	0.011	Pass						
Fipronil	ND	0.051	0.017	Pass						
Imazalil	ND	0.041	0.014	Pass						
Methiocarb	ND	0.032	0.011	Pass						
Mevinphos	ND	0.039	0.013	Pass						
Paclbutrazol	ND	0.034	0.011	Pass						
Parathion Methyl	ND	0.024	0.008	Pass						
Propoxur	ND	0.035	0.012	Pass						
Spiroxamine	ND	0.030	0.008	Pass						
Thiacloprid	ND	0.033	0.011	Pass						

Category 2	LOQ	LOD	Limit	Status	Category 2	LOQ	LOD	Limit	Status		
	µg/g	µg/g	µg/g	µg/g		µg/g	µg/g	µg/g	µg/g		
Abamectin	ND	0.095	0.031	0.1	Pass	Kresoxim Methyl	ND	0.035	0.012	0.1	Pass
Acephate	ND	0.032	0.010	0.1	Pass	Malathion	ND	0.030	0.008	0.5	Pass
Acequinocyl	ND	0.072	0.024	0.1	Pass	Metalaxyl	ND	0.030	0.007	2	Pass
Acetamiprid	ND	0.030	0.009	0.1	Pass	Methomyl	ND	0.036	0.012	1	Pass
Azoxystrobin	ND	0.030	0.006	0.1	Pass	Myclobutanil	ND	0.045	0.015	0.1	Pass
Bifenazate	ND	0.030	0.010	0.1	Pass	Naled	ND	0.062	0.020	0.1	Pass
Bifenthrin	ND	0.030	0.006	3	Pass	Oxamyl	ND	0.036	0.012	0.5	Pass
Boscalid	ND	0.035	0.011	0.1	Pass	Pentachloronitrobenzene	ND	0.054	0.018	0.1	Pass
Captan	ND	0.358	0.120	0.7	Pass	Permethrin	ND	0.049	0.016	0.5	Pass
Carbaryl	ND	0.042	0.014	0.5	Pass	Phosmet	ND	0.031	0.010	0.1	Pass
Chlorantraniliprole	ND	0.037	0.012	10	Pass	Piperonyl Butoxide	ND	0.030	0.006	3	Pass
Clofentezine	ND	0.030	0.009	0.1	Pass	Prallethrin	ND	0.045	0.015	0.1	Pass
Cyfluthrin	ND	0.056	0.019	2	Pass	Propiconazole	ND	0.042	0.014	0.1	Pass
Cypermethrin	ND	0.077	0.026	1	Pass	Pyrethrins	ND	0.030	0.007	0.5	Pass
Diazinon	ND	0.030	0.003	0.1	Pass	Pyridaben	ND	0.030	0.008	0.1	Pass
Dimethomorph	ND	0.030	0.009	2	Pass	Spinetoram	ND	0.030	0.005	0.1	Pass
Etoxazole	ND	0.030	0.005	0.1	Pass	Spinosad	ND	0.030	0.003	0.1	Pass
Fenhexamid	ND	0.036	0.012	0.1	Pass	Spiromesifen	ND	0.030	0.008	0.1	Pass
Fenpyroximate	ND	0.030	0.006	0.1	Pass	Spirotetramat	ND	0.030	0.010	0.1	Pass
Flonicamid	ND	0.054	0.018	0.1	Pass	Tebuconazole	ND	0.031	0.010	0.1	Pass
Fludioxonil	ND	0.054	0.018	0.1	Pass	Thiamethoxam	ND	0.036	0.012	5	Pass
Hexythiazox	ND	0.032	0.011	0.1	Pass	Trifloxystrobin	ND	0.030	0.006	0.1	Pass
Imidacloprid	ND	0.055	0.018	5	Pass						

### Other Analyte(s):

NR= Not Reported (no analysis was performed), ND= Not Detected (the concentration is less than the Limit of Detection (LOD)). Analytical instrumentation used: LC-MS-MS & GC-MS-MS; samples analyzed according to SOPs PESTMYCO-LC-INST-004 and PEST-GC-INST-003.



Infinite Chemical Analysis Labs  
8312 Miramar Mall  
San Diego, CA  
(858) 623-2740  
www.infiniteCAL.com  
Lic# C8-000047-LIC

*Josh M Swider*

Josh Swider  
Lab Director, Managing Partner  
10/24/2022

Confident Cannabis  
All Rights Reserved  
support@confidentcannabis.com  
(866) 506-5866  
www.confidentcannabis.com



This product has been tested by Infinite Chemical Analysis, LLC using valid testing methodologies and a quality system as required by state law. All LQC samples were performed and met the prescribed acceptance criteria in 16 CCR section 15730, pursuant to 16 CCR section 15726(e)(13). Values reported relate only to the product tested. Infinite Chemical Analysis, LLC makes no claims as to the efficacy, safety or other risks associated with any detected or non-detected levels of any compounds reported herein. This Certificate shall not be reproduced except in full, without the written approval of Infinite Chemical Analysis, LLC.