



BLOCK PARTY BLOCK #7 - O' Tree Tablerunner

Created By: Tina Dillard

58" x 19"

Notes: I recommend reading through the instructions to familiarize yourself with the steps before beginning.

For best results: Use a 1/4" seam allowance and press as indicated by arrows or if you desire, press the seams open.

WOF = Width of the Fabric based on 40" FG = Flying Geese

This pattern requires the use of the following Studio 180 Design tools: ~ Wing Clipper® 1

If you need more details or left hand trim down direction using these tools, please refer to the basic instructions that came with your tools or visit Studio 180 Design website for videos.

Yardage based on 40"

Fabric A - Scraps
Fabric B - 1 1/4 yards
Fabric C - Scraps
Fabric D - Scraps
Borders - 3/8 yard

Unit Summary:



A: Flying Geese
4" x 8" Finished / 4 1/2" x 8 1/2" Cut Size



D: Flying Geese
1 1/2" x 3" Finished / 2" x 3 1/2" Cut Size



B: Flying Geese
3" x 6" Finished / 3 1/2" x 6 1/2" Cut Size



E: Flying Geese
1" x 2" Finished / 1 1/2" x 2 1/2" Cut Size



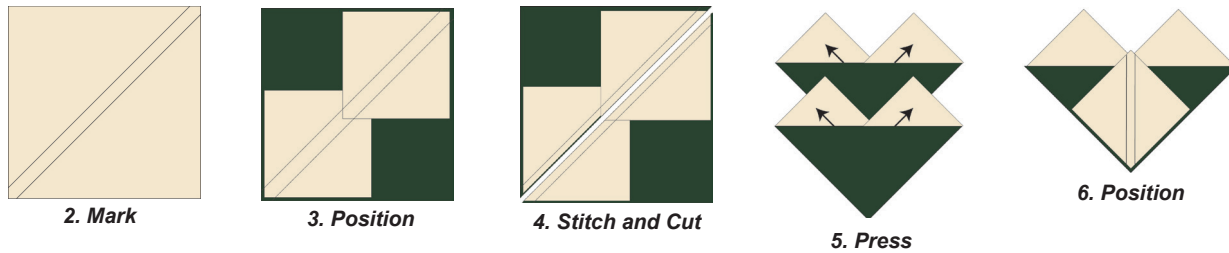
C: Flying Geese
2 1/2" x 5" Finished / 3" x 5 1/2" Cut Size

Cutting Instructions: Makes 4 Blocks

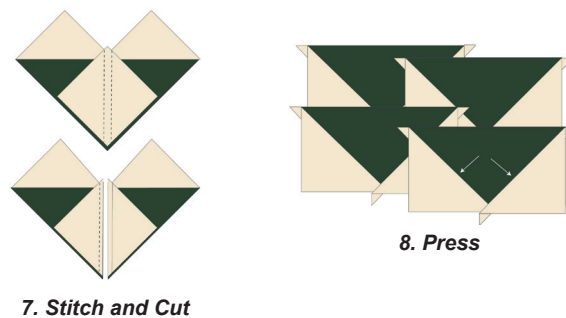
Fabric	Piece	Wall
Fabric A Scraps	Unit A Flying Geese (Body)	Cut (1) 9 1/2" square
	Unit B Flying Geese (Body)	Cut (1) 7 1/2" square
	Unit C Flying Geese (Body)	Cut (1) 6 1/2" square
	Unit D Flying Geese (Body)	Cut (1) 4 1/2" square
	Unit E Flying Geese (Body)	Cut (1) 3 1/2" square
Fabric B Background Fabric 1 1/4 yards	Unit A Wings Rectangles	Cut (1) strip 5" x WOF, Subcut into (4) 5" squares and (8) 5" x 2" rectangles
	Rectangles / Sashing	Cut 1 strip 5 1/2" x WOF, subcut into (16) 5 1/2" x 1 1/2" rectangles
	Unit B Wings Rectangles	Cut (1) strip 4" x WOF, subcut into (4) squares and (8) 4" x 3" rectangles
	Rectangles	Cut (1) strip 4 1/2" x WOF, subcut into (8) 2 1/2" x 4 1/2" rectangles, and any remaining of the 4" x 3" rectangles
	Unit C Wings and Rectangles	Cut (1) strip 3 1/2" x WOF, subcut into (12) 3 1/2" squares; divide into two stacks (3) Wing and (8) rectangles
	Unit D and E Wings	Cut (1) strip 2 1/2" x WOF, subcut into (4) 2 1/2" squares and (4) 2" squares
	Sashing	Cut (1) strip 12 1/2" x WOF, subcut into (9) 12 1/2" x 1 1/2" rectangles
	Fabric C Scrap	Sashing (Tree Trunk)
Fabric D Scrap	Sashing (Corner Stones)	Cut (10) 1 1/2" squares

Flying Geese

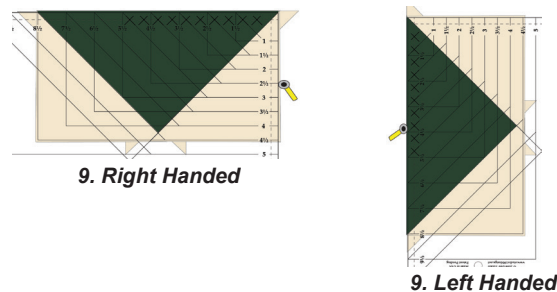
1. Gather (1) 9 1/2" Fabric A / (4) 5" Fabric B squares.
2. Using your **Quilters Magic Wand**, mark two lines, each 1/4" away from the center diagonal on the wrong side of (4) 4" Fabric B squares.
3. Position (2) Fabric B squares diagonally on opposite corners on a Fabric B square as shown. **Nudge each small square** toward the center about 2 or 3 threads from the raw edge of the larger square.
4. **Stitch** on the drawn lines, **then cut** apart between the lines of stitching on the center diagonal.
5. **Press** seams in the direction indicated by arrows.
6. Position (1) Fabric B square to each unit and **nudge** 2 or 3 threads from the raw edge of the larger triangle section.



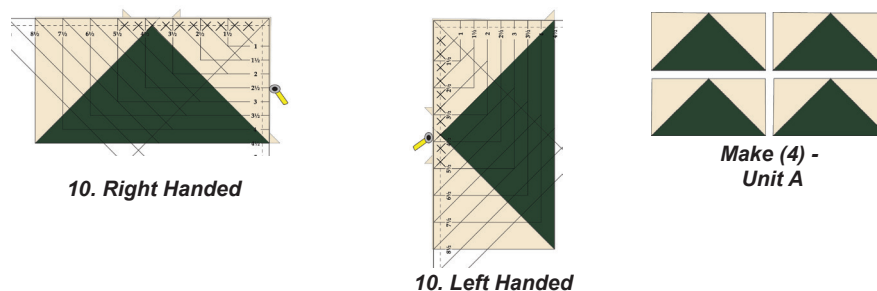
7. **Stitch** on the drawn lines, **then cut** apart between the lines of stitching on the center diagonal.
8. **Press** seams indicated by arrows.



9. **Align** the diagonal guide lines of the Wing Clipper® I with the seams of the Flying Geese unit. You'll be centering the tool over your pieced unit 4 1/2" x 8 1/2". **Trim** the side and across the top.



10. **Rotate** your flying geese unit 180° and reposition the Wing Clipper® I to align the previously trimmed raw edge with the 4 1/2" x 8 1/2" and "X" at the top with the intersection of the seams. **Trim** again, up the side and across the top. **Make (4) Unit A.**



Flying Geese

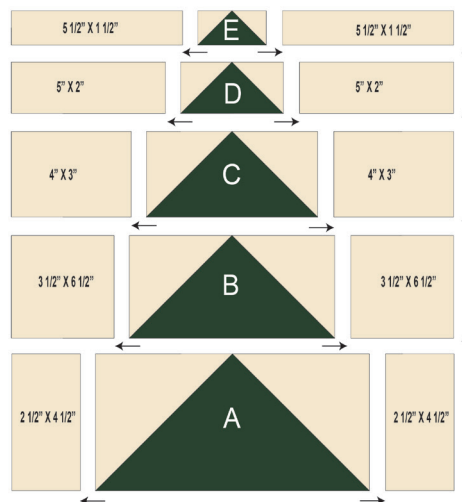
11. Repeat Steps 2-10 above to make the following FG Units.

- (4) 4" Fabric B / (1) 7 1/2" Fabric A- Make (4) 3 1/2" x 6 1/2" Unit B
- (4) 3 1/2" Fabric B / (1) 6 1/2" Fabric A- Make (4) 3" x 5 1/2" Unit C
- (4) 2 1/2" Fabric B / (1) 4 1/2" Fabric A - Make (4) 2" x 3 1/2" Unit D
- (4) 2" Fabric B / (1) 3 1/2" Fabric A- Make (4) 1 1/2" x 2 1/2" Unit E

Block Assembly

1. Lay out the block according to the layout diagram shown.
2. Stitch the units into rows, pressing as you desire.
3. Stitch the rows together, pressing as you desire.

Make (4) 12 1/2" square Block.



Trunk Sashing Piece

1. Lay out the trunk sashing piece according to the layout diagram shown. Stitch and Press according to diagram shown.



Quilt Assembly

1. Lay out the Blocks as shown in the layout diagram below.
2. Stitch the sashing and corner stone pieces into horizontal rows, pressing toward the sashing, as shown in the diagram.
3. Stitch the blocks, and sashing into horizontal rows, pressing toward the sashing, pressing shown in the diagram.
4. Stitch the rows together to create your quilt top, pressing seams shown in the diagram.

Borders

	Fabric	Pieces	Size
Border 1	Coordinating	Left and Right	1 - 3" x WOF Strips. Join together, cut (2) 3" x 14 1/2"
		Top and Bottom	3 - 3" x WOF Strips. Join together, cut (2) 2" x 58 1/2"

Note: Always measure your quilt before cutting your borders.

Borders 1

1. Attach left side and right side to the quilt top. Press according to the layout below.
2. Attach the top and bottom to the quilt top. Press according to the layout below.

