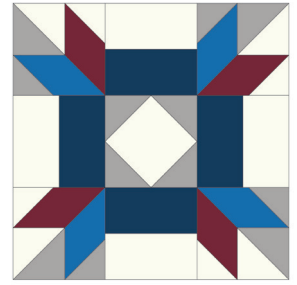




# BLOCK PARTY BLOCK #11

## Barn Lemoyne



Designed for the Studio 180 Design's  
~Rapid Fire Lemoyne Star® ~Squared Square® 6" tools

Created By: Tina Dillard

Barn Lemoyne is a great chance to use your Studio 180 Design tool, the Rapid Fire® Lemoyne Star, and Square Squared® tools.

Note: You can find the instructions you need to make the block units in the Rapid Fire® Lemoyne Star, and Squared Square® tool instructions.

If you don't have the Studio 180 Design tools, please visit your local quilt shop or order them directly from [www.quiltingaffection.com](http://www.quiltingaffection.com) or [Studio180Design.net](http://Studio180Design.net).

### Unit Summary:

**A: Lemoyne Star**



**B: Square Squared**

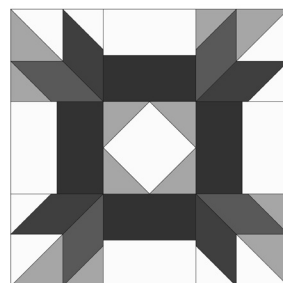
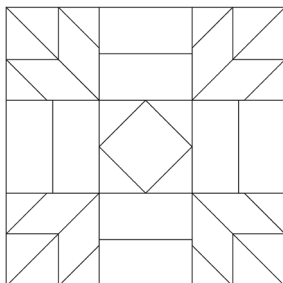
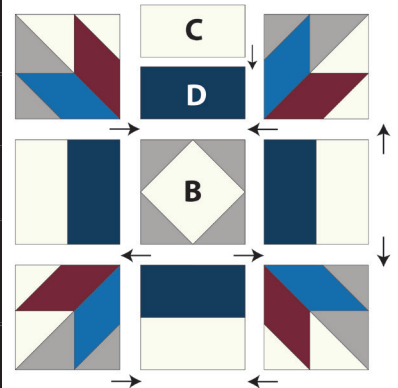


**C & D: Rectangles**



### Cutting Instructions: Per Block

Units Name and # of Units	6"	12"	18"
<b>A: Lemoyne Star</b> 4 Units	2" Finished 2 1/2" cut sized	4" Finished 4 1/2" cut sized	6" Finished 6 1/2" cut sized
<b>B: Square Squared</b> 1 Units	2" Finished 2 1/2" cut sized	4" Finished 4 1/2" cut sized	6" Finished 6 1/2" cut sized
<b>C: Rectangle</b> 1 rectangle	1" x 2" Finished 1 1/2" x 2 1/2" cut sized	2" x 4" Finished 2 1/2" x 4 1/2" cut sized	3" x 6" Finished 3 1/2" x 6 1/2" cut sized
<b>D: Rectangle</b> 1 rectangle	1" x 2" Finished 1 1/2" x 2 1/2" cut sized	2" x 4" Finished 2 1/2" x 4 1/2" cut sized	3" x 6" Finished 3 1/2" x 6 1/2" cut sized

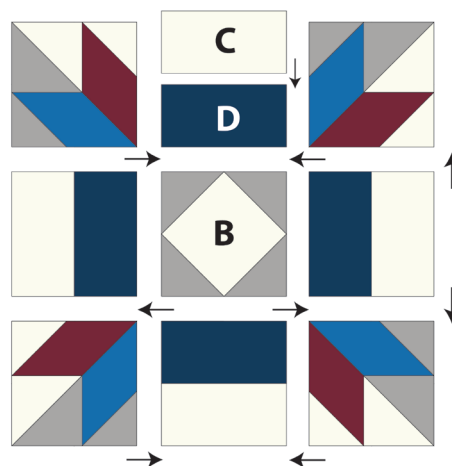


**Note: Please remember to read your tool instructions thoroughly before using them.**

## Block Assembly

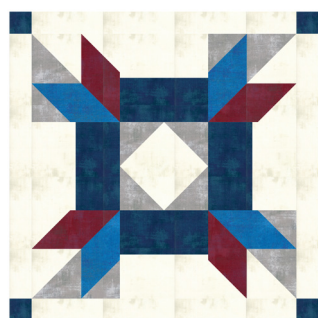
1. Lay out the block according to the layout diagram shown.
2. Stitch the units into rows, pressing as you desire.
3. Stitch the rows together, pressing as you desire.

**Make (1) Block.**



## Quilt Layout Ideas

Be Creative with you finishing!



20" Pillow

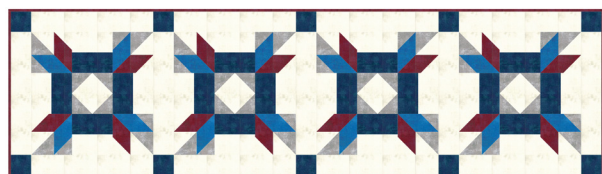


Table runner

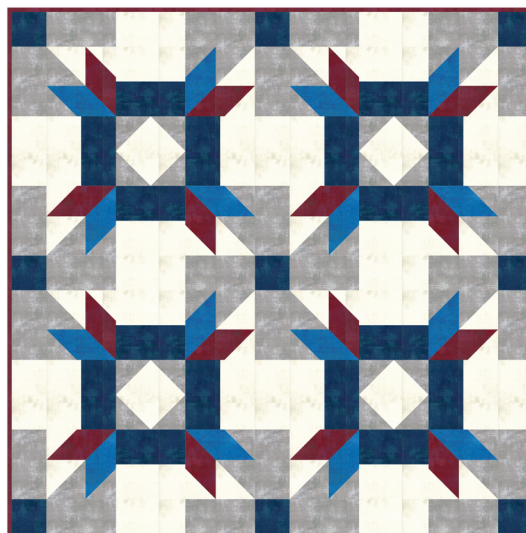


Table topper