


Product Content

1: 1* Rail 

2: 2* Roller 

3: 4* Wall Spacer 

4: 4* Lag Bolt 

6: 2* Door Stopper 

9: 1* Floor Guide 

7: 1* Hex Key 

8: 2* Anti-jump 

Tools Needed

Phillips Screwdriver 

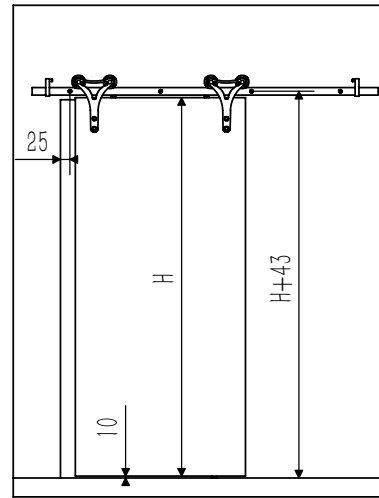
Drill 

Wrench 

Pencil 

Tape 

Level 

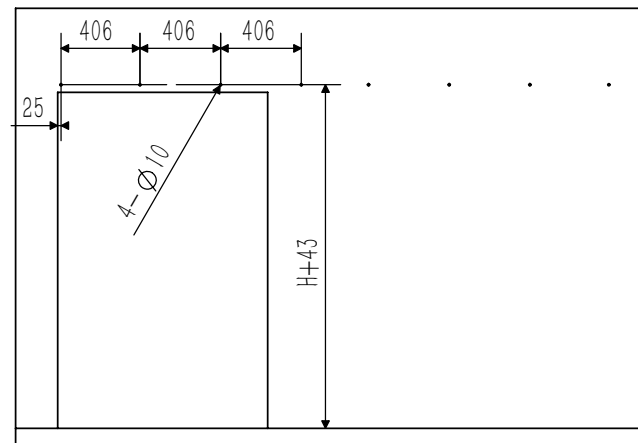


1: The gap between each pre-drilled hole is 406mm.

2: Distance from the bottom of the door to the floor is 10mm.

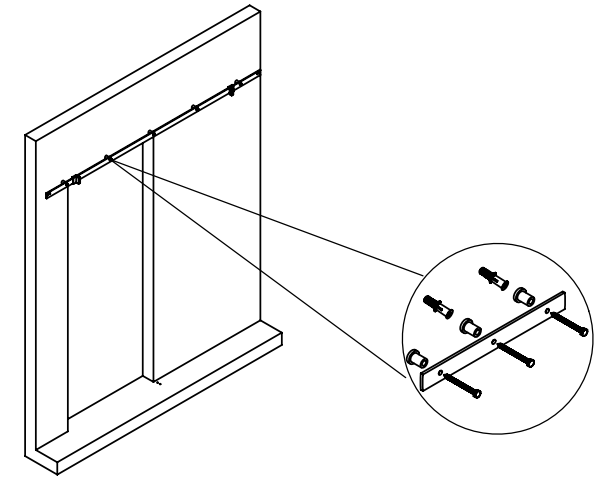
3: Door height is H.

4: The height of holes on the wall is H + 43mm.

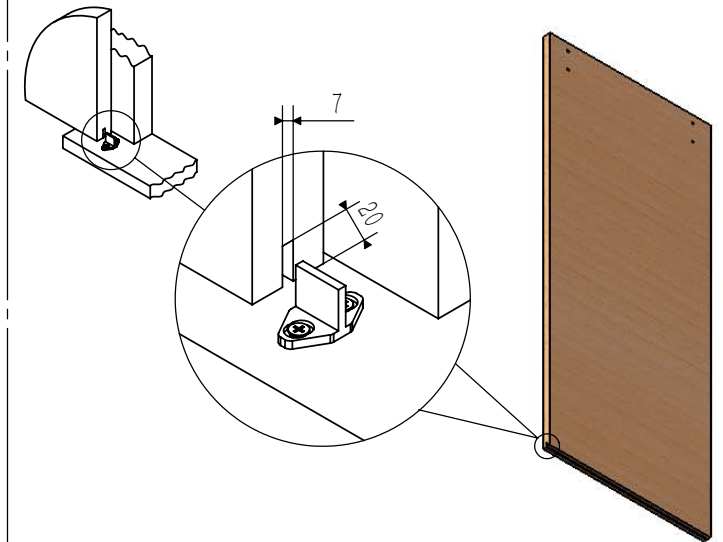


1. Place the rail against the wall, and use a pencil to mark where the holes should be. Make sure the height of holes on the wall is H+43mm.

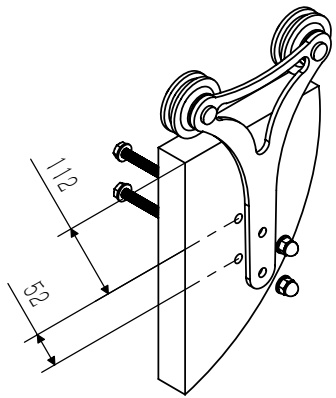
2. Drill the holes on the wall where the pencil mark is. The holes on the wall and the pre-drilled holes on the rail should now match exactly.



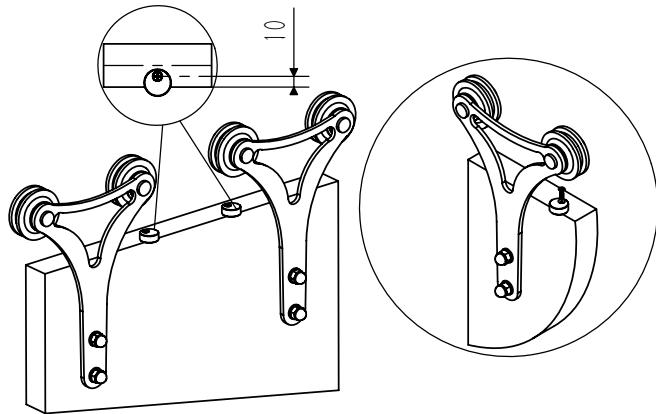
1: Install the rail onto the wall.



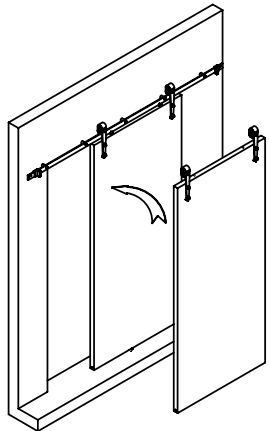
1: When closing and opening the door, the bottom may swing back and forth. Use the T-shaped floor guide to prevent this. Create a groove at the bottom of the door to allow the tip of the floor guide to fit in between. This will keep your door stable when sliding.



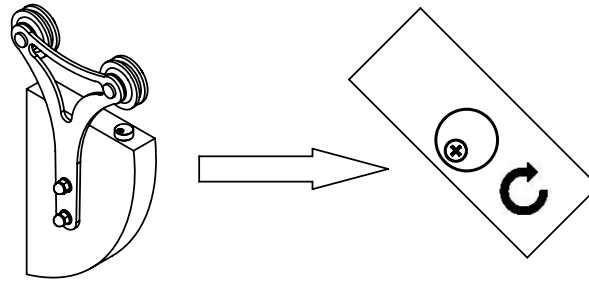
1: Install the rollers onto the door according to the measurement in the pictures above.



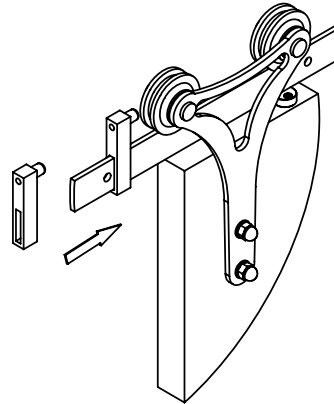
1: The anti-jumps are used to protect the door from derailing when sliding the door. You need to drill holes on the door top side in order to install the anti-jump.



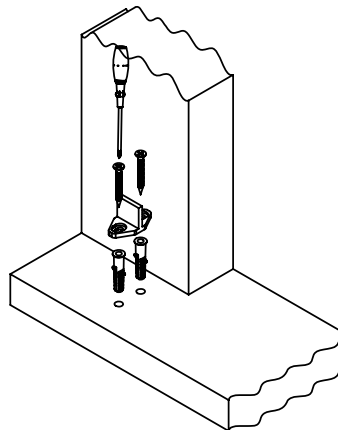
1: Hang the door over the rail.



1: Turn the anti-jump approximately 180 degrees .



1: Adjust the 2 door stoppers to find a suitable position, Use the hex key to screw the door stoppers in place.



1: Install the floor guide. Put floor guide on the floor first to find a suitable position and make a mark so that the tip of the floor guide can work well in the slot. Use drill bit to drill holes on the floor where the mark is , and then install the floor guide.



INSTRUCCIONES DE MONTAJE

RUSTIC DOBLE 140