



**gio**



# Titan PRemium Mobility Scooter

GIO eScooter Owners Manual - EN

[www.giomobility.com](http://www.giomobility.com)

**PLEASE INSPECT YOUR GIO ELECTRIC TITAN PREMIUM MOBILITY SCOOTER UPON ARRIVAL AND REPORT ANY DAMAGES THAT MAY HAVE OCCURRED DURING SHIPPING**



# **SAFETY INFORMATION**



Please note the following information to ensure your safety and get better use out of your GIO Titan Premium (Titan PR for short) Long Range Mobility Scooter

Please read the manual prior to first use and do not permit anyone who hasn't, operate the vehicle.

This scooter is designed only for one adult only. Never exceed the max load capacity of the vehicle. 440lbs (200kg)

Take extra care when handling the batteries inside your scooter. Avoid directly touching contacts with damp hands or metal tools to prevent electrocution.

To ensure the safety and reliability of your scooter, do not modify your scooter, and always use parts, i.e. charger, specifically designed for the GIO Titan PR.

**⚠ ALWAYS APPLY BRAKES WHILE GOING DOWNHILL TO CONTROL SPEED AND AVOID SHARP TURNS AT HIGHER SPEEDS TO PREVENT TIPPING SIDWAYS! ⚠**

**⚠ THIS VEHICLE WAS NOT MANUFACTURED PRIMARILY FOR USE ON THE PUBLIC ROADS AND THUS IS NOT A MOTOR VEHICLE SUBJECT TO THE FEDERAL MOTOR VEHICLE SAFETY, BUMPER AND THEFT PREVENTION STANDARDS OR THE EQUIPMENT ITEM IS NOT A SYSTEM, PART, OR COMPONENT OF A MOTOR VEHICLE AND THUS IS NOT AN ITEM OF MOTOR VEHICLE EQUIPMENT SUBJECT TO THE FEDERAL MOTOR VEHICLE SAFETY STANDARDS. [591.5(A)] ⚠**

# Table of Contents

Riding Safety	2
Overview	3
Scooter Assembly	3
Scooter & Control Diagrams	7
Operating & Adjusting Your Scooter	9
Maintenance & Care	13
Specifications & Troubleshooting	16
Warranty Information	18

## Riding Safety

**ALWAYS** wear an approved helmet when riding your scooter

**ALWAYS** steer with both hands

**ALWAYS** drive with caution at appropriate speeds

**ALWAYS** use your scooters turn signals and horn

**ALWAYS** obey local traffic laws

**ALWAYS** be aware of your surroundings, pedestrians, traffic, etc

**ALWAYS** take extra care when driving in spaces shared with motor vehicles, parking lots, driveways, crosswalks etc

**ALWAYS** apply brakes while driving downhill to regulate speed

**ALWAYS** take extra care driving in wet conditions

**ALWAYS** allow extra room for braking in wet conditions

**ALWAYS** wear reflective clothing while driving in darker conditions

**ALWAYS** use your lights when driving in darker conditions

**AVOID** driving while fatigued or tired

**AVOID** driving under the influence of drugs or alcohol

**AVOID** distracted driving by not using a cell phone while driving

**AVOID** driving off-road or on surfaces that may lead to scooter damage

**AVOID** driving in conditions that may get the electric components wet

**AVOID** driving in conditions where you are not visible

# Overview

Thank you for your purchase of the GIO Electric Titan PR Long Range Mobility Scooter. It is an easy to operate mobility scooter designed for indoor and outdoor use. This stylish recreational mobility scooter doesn't require any licensing, registration or insurance. (unless required locally) Inspired by motorcycle design, the original Titan PR is packed with features from alarm system to generous top speeds, long driving range, front and rear suspension, and hydraulic brakes. This manual contains a wide range of general information and should be read before you operate it. Please note final details and/or images may vary from final product.

# Assembly

Your Titan PR arrives 98% assembled and is ready in 5 simple steps.

## Step 1 - Unboxing

Untie or snip the wires holding your Titan PR in its protective frame and remove it from its packaging. Ensure the following components are included:

Rear Basket & Hardware



Mirrors (1ea Left & Right)



Keys & Fobs



Smart Charger



Riding Poncho



Security Lock

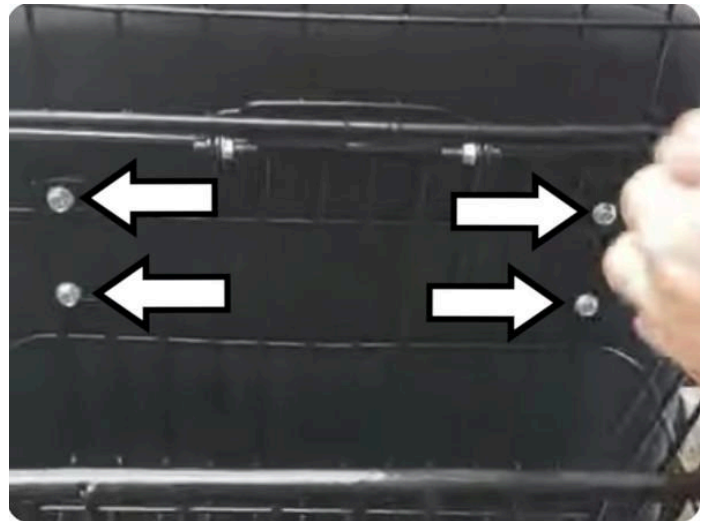
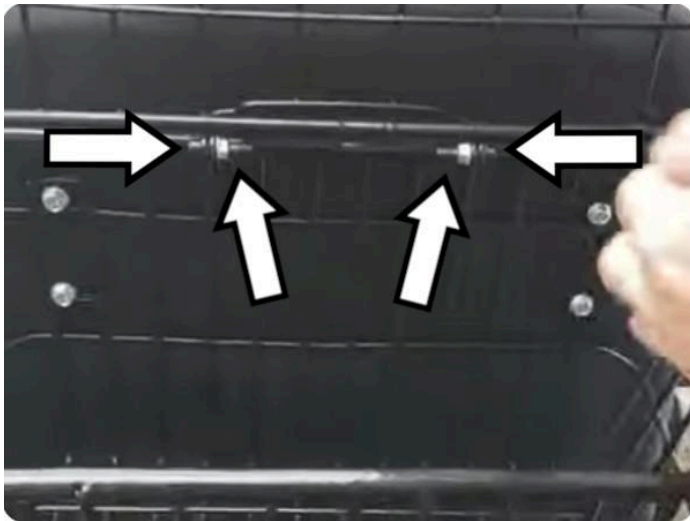


Windshield Kit (Optional Installation)



## Step 2 - Installing the Basket

First attach the top to the basket body with the provided hardware. Once attached, locate the premade holes located in the back side of the seat and mount the basket as a whole.



### Step 3 - Installing the mirrors

Align the mirrors with the mounting points above the controls, bolt into place and cover with black caps. (If adding the optional windshield, install in step 6 instead)



### Step 4 - Turning on the breaker

Your scooter ships with the breaker in the off position. Open the underseat compartment to find the breaker inset in the compartment liner next to the latch. Flip the breaker to the on position. The scooter will not charge or operate unless the breaker is in the on position.



## Step 5 - Charging

Charge your battery for the first time - Your scooter does not arrive fully charged and will need charging before it is ready to drive. See instructions for charging on page #.

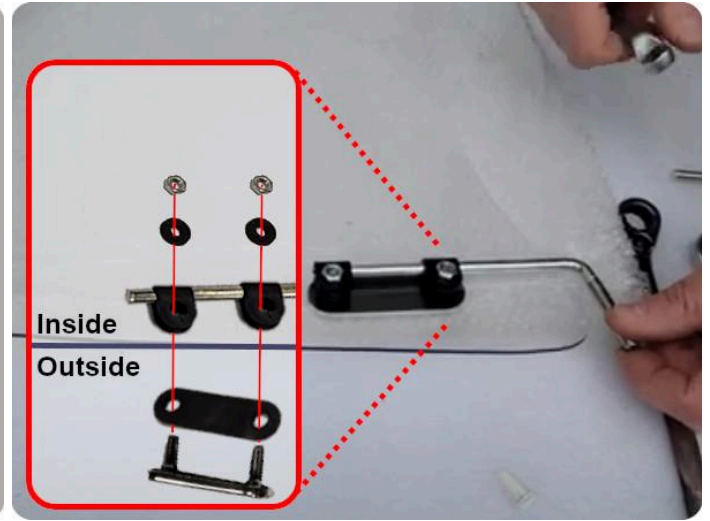
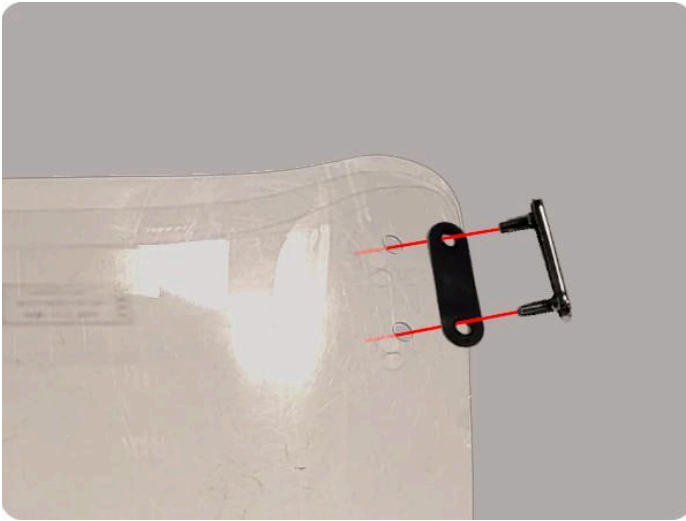
## Step 6 - (Optional Installation) Windshield

The Titan PR includes the previously separate windshield kit at no extra cost. The windshield is not required for use and is completely optional to install. Ensure hands are clean and take care with plastic components to avoid damaging the windshield during installation.

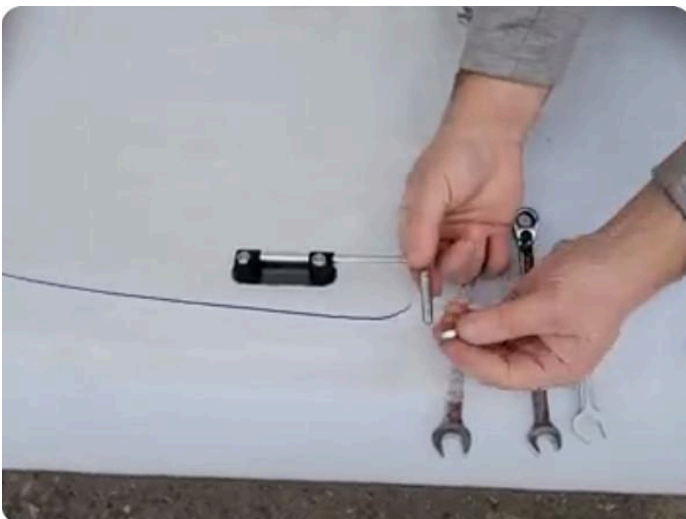
Locate the hardware for the brackets that mount to the acrylic shield panel. Each side consists of an outer bracket, rubber grommet, rubber washers (x2), nuts (smaller size x2), an L shaped support and 2 plastic mounting clips. Begin by sliding 2 mounting clips onto the longer portion of the support, facing the opposite to the short side of the support.



Next layer the rubber grommet over the threads of the outer bracket and insert through the premade holes in the acrylic shield. Align the mounting clips on the L shaped support with the outer bracket threads. (Short side of the support pointing towards the edge of the shield. Add rubber washers to the threads before securing each with a nut. Repeat the process for the other side to complete the windshield body. (See images on next page...)



You can now begin mounting it to the scooter. Locate the 2 metal mounting clips. Remove each mirror, place the mounting clip over top of the hole the mirror slots into, extending the clip towards the driver. Reinsert each mirror through the mounting clip into its mounting hole and loosely tighten for now. Thread one of the larger nuts all the way along each of the threaded shorter portions of the L shaped supports.





Next slide one of those threaded supports into the receiving channel on the metal mounting clips you just installed. Carefully flex the windshield to allow the other threaded support to be guided into the metal mounting clip on the opposite side.



With the windshield now in place add the 2 remaining nuts to the ends of the threaded part of the support. Using 2 wrenches tighten the nuts towards the mounting clip to secure in place. Repeat on the other side, tighten the mirrors to complete installation

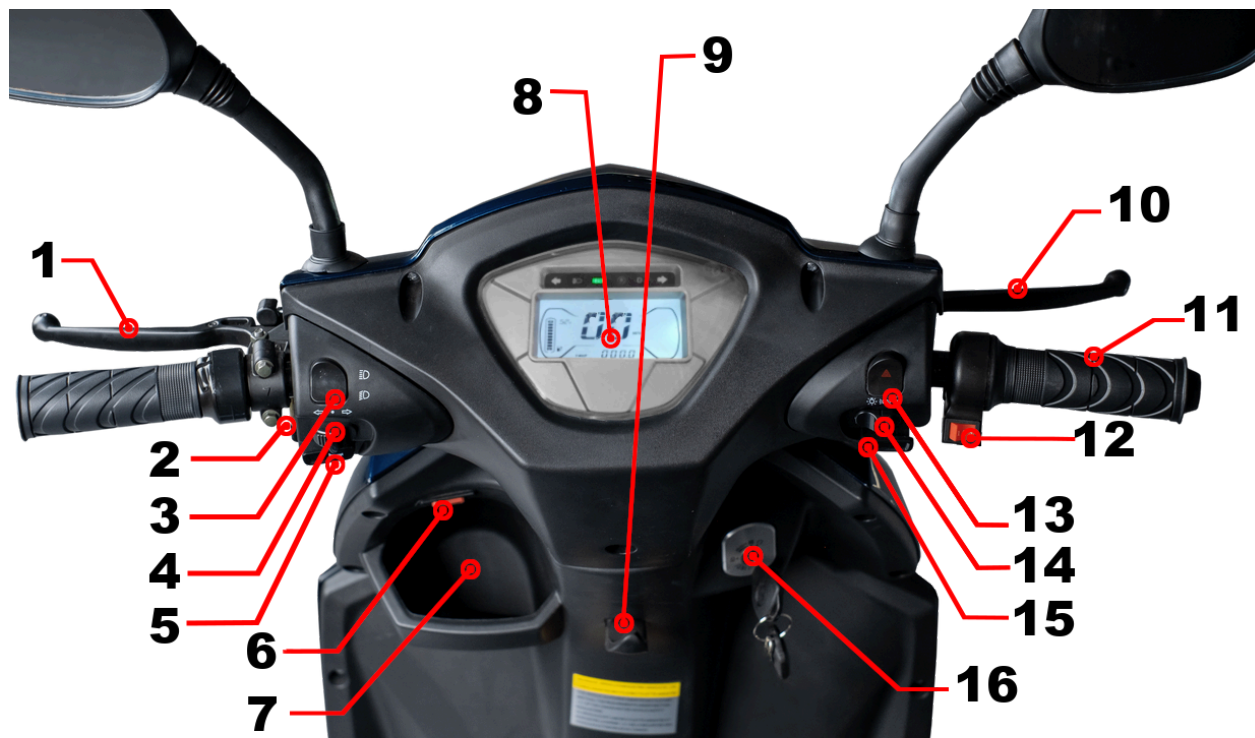


# Scooter Diagram

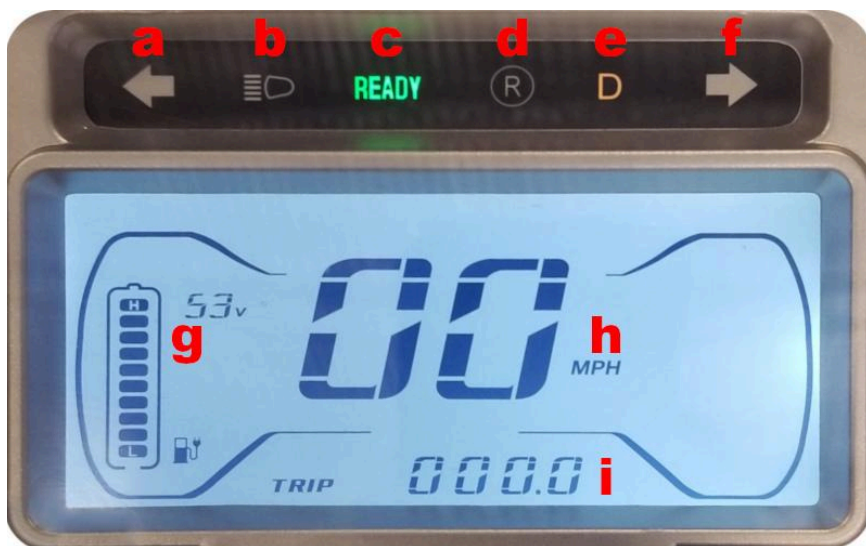


- |   |                              |    |                                 |
|---|------------------------------|----|---------------------------------|
| 1 | Mirrors                      | 10 | Armrests (flip up)              |
| 2 | Headlight                    | 11 | Seat adjustment levers          |
| 3 | Front turn signal lights     | 12 | Basket                          |
| 4 | Front wheel & fender         | 13 | Underseat compartment           |
| 5 | Front fork & brakes          | 14 | Battery & Controller (internal) |
| 6 | Handlebar, controls, display | 15 | Rear turn signal lights         |
| 7 | Ignition                     | 16 | Rear brakes & wheels            |
| 8 | Covered charging port        | 17 | Motor (internal)                |
| 9 | Seat & headrest              | 18 | Tip protection wheels           |

# Control Diagrams



- |   |                         |    |                              |
|---|-------------------------|----|------------------------------|
| 1 | Rear brake lever        | 9  | Bag hook                     |
| 2 | Parking brake pin       | 10 | Front brake lever            |
| 3 | Headlight level switch  | 11 | Twist grip throttle          |
| 4 | Turn signal switch      | 12 | 3 speed switch               |
| 5 | Horn button             | 13 | Caution/brake light switch   |
| 6 | USB power port          | 14 | Light control master switch  |
| 7 | Coin/cup holder         | 15 | Reverse/neutral/drive switch |
| 8 | LCD display (see below) | 16 | Ignition                     |



- |   |                         |
|---|-------------------------|
| a | Left turn indicator     |
| b | Headlight indicator     |
| c | Ready indicator         |
| d | Reverse indicator       |
| e | Forward drive indicator |
| f | Right turn indicator    |
| g | Battery gauge & voltage |
| h | Speedometer             |
| i | Odometer                |

# Operating & Adjusting your Scooter

## Turning your Scooter ON/OFF

To turn the scooter on, insert the key and turn clockwise. To turn your scooter off, turn the key counterclockwise from the on position. The LCD display should activate and “Ready” light illuminate indicating the scooter is on and ready to ride. Your scooter can also be turned on & off remotely with the included key fob, see further instructions on pg 12. Once the scooter is turned on using a specific method (keys or fob) it can ONLY be turned off with the same method.

## Driving your Scooter

The Titan PR features a variable twist throttle on the right handlebar. (See steering controls diagram) Gently twist the throttle grip inwards to slowly accelerate to the desired speed. Avoid twisting too hard or too quickly as this may result in jumps in accelerations making steering less controllable.

To slow or stop your scooter, release the throttle and squeeze both brake levers to apply both front and rear brakes. Always apply both brakes at the same time, especially when traveling at higher speeds. Please note the electric braking function of your scooter will prevent the motor from starting if the brakes are applied.

**⚠ Drive with care on wet/slippery/icy surfaces as it will increase the distance needed to stop, allow extra room for braking in these conditions. When driving downhill it is recommended to release the throttle & apply brakes as needed to control the scooter’s speed. ⚠**

**⚠ Please note your scooter can be converted from miles to kilometers via a wired connection near the bottom edge of the handlebar cover piece. Connect or disconnect this connection to set to your desired unit of measurement & tuck back under the cover. ⚠**

Your scooter features control switches next to the throttle grip that adjust driving features. The lower switch labeled RND sets the scooter into reverse, neutral or forward drive. The red switch labeled 1-3 sets the current speed setting of the forward drive when in use. **Bring your scooter to a complete stop before switching between forward, neutral and reverse.**

### **Speeds by level:**

**I** - 5 mph (8 km/h) **II** - 10 mph (16 km/h) **Speed III** - 15 mph (24 km/h)


**Reverse** - 3 mph (5 km/h)

The brake lever also features a parking brake option. Once stopped you can apply the parking brake by firmly squeezing the rear(left) brake lever as if you were applying the brakes to stop. Then with your other hand reach below and behind the lever and push the brake locking pin (silver in color with rubber cap) upwards into the level to secure it. To release the parking brake simply squeeze the brake lever again, the pin should slip downwards releasing the secured brake lever. If it doesn't unlock freely, manually assist the pin's withdrawal. Always attempt to park on a level surface if possible.


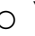
### **Using the electric features of you Scooter**

Your scooter has several features that have controls also located on either side of the display screen. (See control diagram for locations)

#### **Right Side Controls**

The uppermost switch labeled with  toggles the brake lights of your scooter on and off. **Please note:** that pressing this button also engages the motor power cut off feature.

The center sliding switch controls the scooters lights:

- (  ) All lights including headlight ON
- (>DC<) Daytime signal & running lights only or
- (  ) All lights OFF

## Left Side Controls

When the light control switch is set to ON ( ☀ ) the headlight brightness can be adjusted between low beam and high beam with the uppermost switch.

The center switch controls the turns signals by pushing it in the direction you want to indicate.

The lowermost of the switches is a button labeled with a horn symbol that activates the scooter's horn.

## Remote fob and alarm system

The GIO Titan PR features an alarm system that is controlled with the included fob. This fob can also be used to turn the scooter on and off remotely. To turn on the scooter, press the center power button ( ⚡ ) on the fob twice. The scooter will beep once and the display will show the scooter is turned on. Press the power button ( ⚡ ) twice again to turn it off.

The Titan PR's built in security alarm is movement sensitive, once activated it will first provide a warning chirp twice and then sound the scooters alarm if it is interfered with further.

Activating the alarm can be done in 2 ways. The scooter will automatically set the alarm when the keys are removed and it sits idle for over 3 min. The second method to activate the alarm is using the key fob. The lowermost button on the fob is the lock button ( 🔒 ), press this button to turn the alarm on. The scooter will chirp to indicate the alarm is active.

Once activated, via either method, or if triggered the alarm can be deactivated by pressing the unlock button ( 🔓 ), the top most button on the fob.

Please note that the fobs for your scooter come with the battery preinstalled. If your fob is no longer working or lighting up when pressed, it is recommended that you first replace the battery. (1x CR2032 battery)

## Charging your Scooter

Your scooter does not come fully charged and requires a full charge before your first use. To maintain the batteries life charge after use and don't allow the battery to empty completely. Locate the charging port just below the front of the seat, depress the exterior cover to open it and flip up the flap on the port itself, insert the corresponding end of your charger and then plug into a standard wall socket. The light on the charger will illuminate **red** while your scooter is charging and will switch to **green** when charging is complete. (Approximately 8-10 hours) Once complete remove the charger from the wall outlet and then disconnect it from the scooter.

Do not leave the charger continuously plugged in, always remove as soon as possible after charging is complete. Charger may become warm or emit a noise while active. If charging does not complete after 12 hours please contact GIO Technical Support.

**⚠ Your scooter will only charge and operate with the breaker in the ON position! Do not touch the charger or connections with wet hands! ⚠**

**⚠ Please see care instructions pg17 for full care and safety information on your battery and charger! ⚠**

## Adjusting your scooters seat

The seat on the Titan PR has several adjustments. The distance of the seat to the handlebars can be shifted forward or backward by engaging the lower adjustment handle near the seat cushion on the right hand side and manually moving the seat's position. The angle of the seat back can be adjusted by engaging the seat back adjustment lever on the left side hinge of the seat back and moving the seat back to the desired angle. The height of the headrest can be adjusted similarly to most automobiles by pinching the locking buckle the headrest inserts into, setting the desired height and releasing.

## Storage on your Scooter

Your scooter comes complete with several storage options. The largest being the basket on the seat located on the back of the seat. There is a bag hook located just below the LCD screen, perfect for shopping bags or a purse. Adjacent to the bag hook is a small holder perfect for putting coins, a drink or cell phone in, it includes a USB power port to charge your mobile devices. There is also a locked hidden storage compartment located beneath the seat. This small compartment, perfect for anything that requires a bit more cover or security, and can be accessed by inserting the key into the lock located on the rear body below the seat. Once the key is turned and latch retracted the seat can be lifted from the rear to reveal the storage compartment.





# Maintenance & Care

The GIO Titan PR requires minimal maintenance which can be performed by most users, a friend or family member, or scooter technician. Visually inspect your scooter regularly for any signs of damage, especially after any collisions or accidents.

⚠ To ensure the safety and reliability of your scooter, do not modify your scooter, and always use parts, i.e. charger, specifically designed for the GIO Tron. Always make sure your scooter is turned off before performing any maintenance! ⚠

## Safety Inspection List

**BEFORE YOUR FIRST RIDE** and periodically after, check the following:

Brakes:

- Do the brakes prevent movement when they are squeezed?
- Does the motor correctly cut out while braking?
- Is there any friction or noise when driving?

Tires:

- Are they properly inflated, with no visible damage? (18-20 PSI)

Lights:

- Do the turn signals function properly?
- Does the headlight function properly?

Steering Handle:

- Does it turn freely?

General:

Are there any loose parts, nuts, bolts etc?

Any issues found should be addressed before riding the scooter!

## Battery & Charger

⚠ Always charge your battery with the included charger, do not substitute with a different charger. For best performance, charge after use and avoid completely draining the battery by recharging it before the meter reaches zero. ⚠

The battery in your scooter requires regular charging, even when not in use, to maintain its life. This maintenance charge should be performed at least once a month if no other charging has occurred. If storing the scooter for an extended period of time, such as during winter, ensure that it is accessible to perform the required maintenance charging.

All batteries are affected by environmental temperature. The battery will discharge faster at lower temperatures, resulting in a shorter trip time. Prolonged exposure to subzero temperatures may result in damage to the battery. The speed the scooter is driven at will directly affect the range and battery life of each ride. The faster the scooter is driven the shorter total ride time will be. Lower speeds will provide the best performance.

Ensure the battery and charger do not come in contact with water, heat, open flames or chemicals and avoid direct prolonged exposure to sunlight. Ensure the charger is placed on a flat surface to avoid it falling and situate in a dry ventilated space. Do not block heat vents on the charger or place a powered charger inside of an enclosed container such as the underseat compartment. The charger for your Titan PR is not designed for outdoor use. Ensure that it is used only when protected by proper shelter that is dry and between 0° to 40°C (32° to 104°F)

Avoid dropping your charger. Always disconnect by gripping plugs directly, do not tug on wires. Do not disassemble or attempt to repair a damaged battery or charger, contact GIO customer service to order replacement parts.

## Tires

The Titan is equipped with tubeless tires, these require less maintenance, and are less prone to flats compared to traditional tube tires. However, damage and flats are still possible. The condition of your tires not only directly affects the ability to drive your scooter but also its general performance.

In the event your tire is unable to hold air, check it for any cuts or punctures. If a puncture is found in the tire can be repaired at home with a basic patch kit for tubeless tires, or by a shop that repairs tires. If there is a cut or greater damage to your tire(s), replacement parts are available to order, please contact customer service.

**⚠ The tread on the tires is crucial to the scooter's handling and safety. Worn out treads will reduce the grip between the tire and the driving surface resulting in less control and possible accidents. ⚠**

## Brakes

The Titan PR is equipped with both front hydraulic disc brakes. Hydraulic brakes require less maintenance, adjustments and are more reliable than traditional cable disc or drum brakes. In the event you see decreased brake performance or your brakes feel spongy when applied please contact GIO Technical Support or seek out a local service provider qualified to maintain hydraulic brakes. Rear brakes are traditional cable drum brakes and are easily adjusted, contact GIO Customer Service for more information.

## Lubrication

This vehicle is designed with a differential motor for the rear axle and the gearbox needs lubrication with the gear oil. This should be changed every 2-3 years under normal driving conditions.

## Cleaning

To clean your scooter use a damp cloth with a neutral soap to wipe clean surfaces. Avoid high pressure or excess water as this may cause corrosion or shorts in electrical components.

# Specifications & Troubleshooting

## Specifications

Motor:	Rear differential 48v 500w
Battery:	48v 20ah lead acid
Brakes:	Front Hydraulic Disc / Rear Cable Drum
Tires:	10" D3.00 Tubeless
Top Speed:	15mph (24km/h)
Range per Charge:	Up to 30 miles (50km)
Charge Time:	8-10 hours
Dimensions:	62" x 28" x 48" (157cm x 72cm x 122cm)
Ground Clearance:	2.5" (6cm)
Seat Height:	29" (74cm) from ground*
Wheel Base:	48" (120cm)
Wheel Track:	27" (67cm)
Turning Radius:	47" (117cm)
Max Load:	440lbs (200kgs)
Dry Weight:	275lbs (125kgs)
Max Incline:	25°

## Troubleshooting

Issue	Possible Cause	Solution
Battery gauge doesn't register anything when, scooter is ON	Loose connection near the power switch or battery pack.	Check connections, tighten loose connections
	Battery is completely discharged.	Charge battery
Scooter turns ON and has battery charge but doesn't work	Motor wire is loose or disconnected	Check connections near the motor, tighten loose connections
	Throttle is defective	Replace throttle
	Controller is defective	Replace controller
	Power cut off engaged	Release brakes or turn off caution lights
Noise coming from motor	Defective or damaged motor	Replace motor
Scooter doesn't decelerate when throttle released	Throttle is defective	Replace throttle
	Controller is defective	Replace controller
Scooter slowing down	Low battery	Charge battery
	Defective battery	Replace battery
	Defective throttle	Replace throttle
Trip distance per charge reduced	Low tire pressure	Adjust tire pressure (18-20PSI)
	Low battery	Charge battery
	Defective battery	Replace battery
	Over weight limit	Reduce scooter load
	Driving conditions (headwind, slopes)	Avoid these conditions for best performance
Battery not charging, no lights on charger illuminated	Damaged or defective charger	Replace Charger
	No power at wall socket	Check power or use a different outlet

## Troubleshooting continued...

Issue	Possible Cause	Solution
Battery not charging, light on charger stays green, never turns red	Loose or damaged external connection	Check that charger is securely plugged into wall socket and charging socket on the scooter
	Loose or damaged internal connection	Check connections near the battery and charging socket, tighten loose connections
	Battery issue, (critically low or reduced capacity from infrequent charging, end of life, damaged, defect, etc)	Replace batteries
Charging time unusually short	Battery was only partially depleted, only required a short charge time	Nothing
	Battery capacity reduced by improper care or natural end of life	Replace battery
	Charger overheating and shutting off prematurely	Check or replace charger
Charger doesn't complete charging, light stays red continuously.	Battery or charger issue	Discontinue use, contact GIO Technical Support
Charger extremely hot, emits odor, sparks etc	Damaged charger	Discontinue use, replace charger

The tips above are meant as a basic guide. Do not attempt to repair the scooter without proper knowledge and skill. Please contact our technical support for help with any scooter issues and possible solutions or seek the expertise of a local technician experienced in scooter repair.

# Warranty

The limited warranty as contained herein is exclusive and in lieu of all other warranties expressed or implied. There are no warranties that extend beyond the description in this limited warranty.

GIO Electric guarantees this product, including charger, motor, controller, to be free of manufacturing defects for a period of 12 months. All warranty periods commence from the date of shipment.

This limited warranty does not cover normal wear and tear items/parts. (tires, brake pads, cables, etc) It does not cover the product issues due to misuse, neglect, or accident. Nor any damage, failure, or loss caused by improper: assembly, set up, storage, maintenance, servicing or any modifications.

For any request regarding warranty, spare parts or replacement devices do not hesitate to contact us by phone or e-mail. Have your order number ready before contacting us.

**E-Mail: [support@gioelectric.zendesk.com](mailto:support@gioelectric.zendesk.com)**

**Tel: 1-855-907-4211**



# gio

11400 Twigg Place Unit 1  
Richmond, BC, V6V-3C1  
CANADA

E-Mail: [support@gioelectric.zendesk.com](mailto:support@gioelectric.zendesk.com)

Website: [www.giomobility.com](http://www.giomobility.com)

Tel: 1-855-907-4211

© GIO Mobility, 2023. All Rights Reserved