

# MOBILE CABINS

INCLUSIONS, DESIGNS & PRICING



**BUILT TO ORDER - FULLY CUSTOMISABLE - READY TO TOW AWAY**

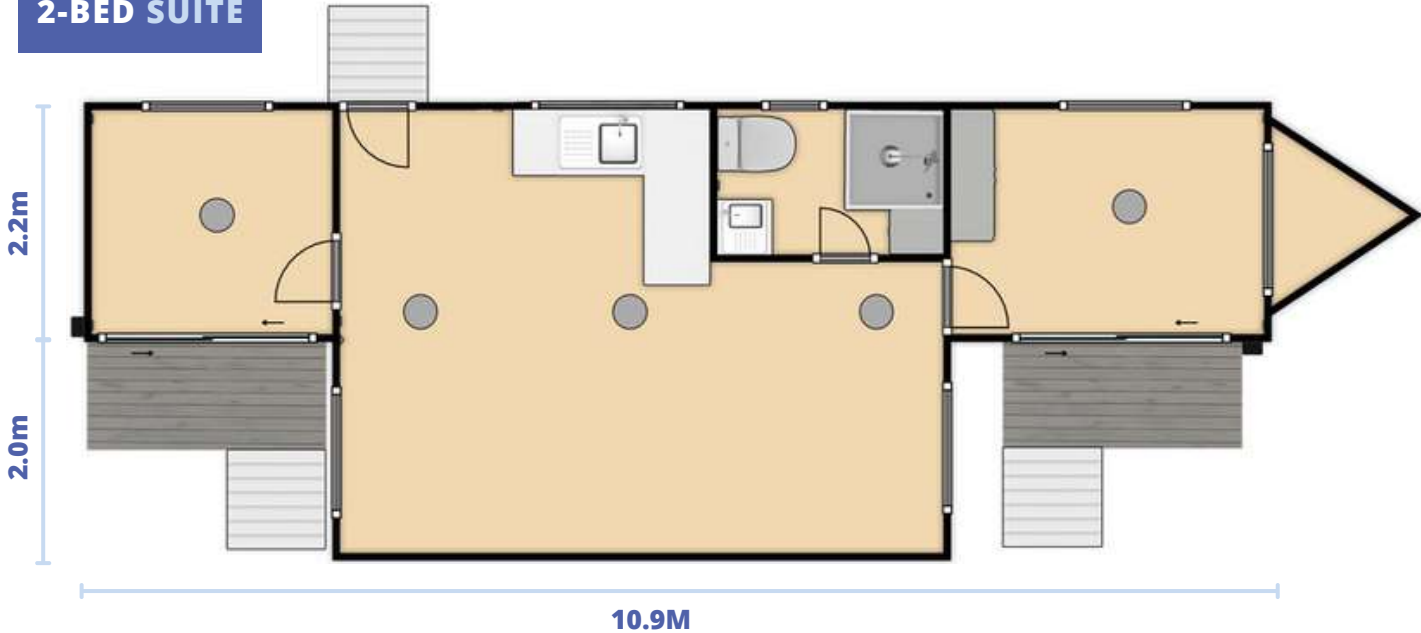
TrailerTech will tailor build a mobile cabin to best suit your needs. Offering the most affordable and practical extra space for any and all uses. From business showrooms, to offices, to fully fitted 2 bedroom apartments on wheels; TrailerTech can build to meet whatever space your family or business requires. The possibilities are endless.

# TABLE OF CONTENTS

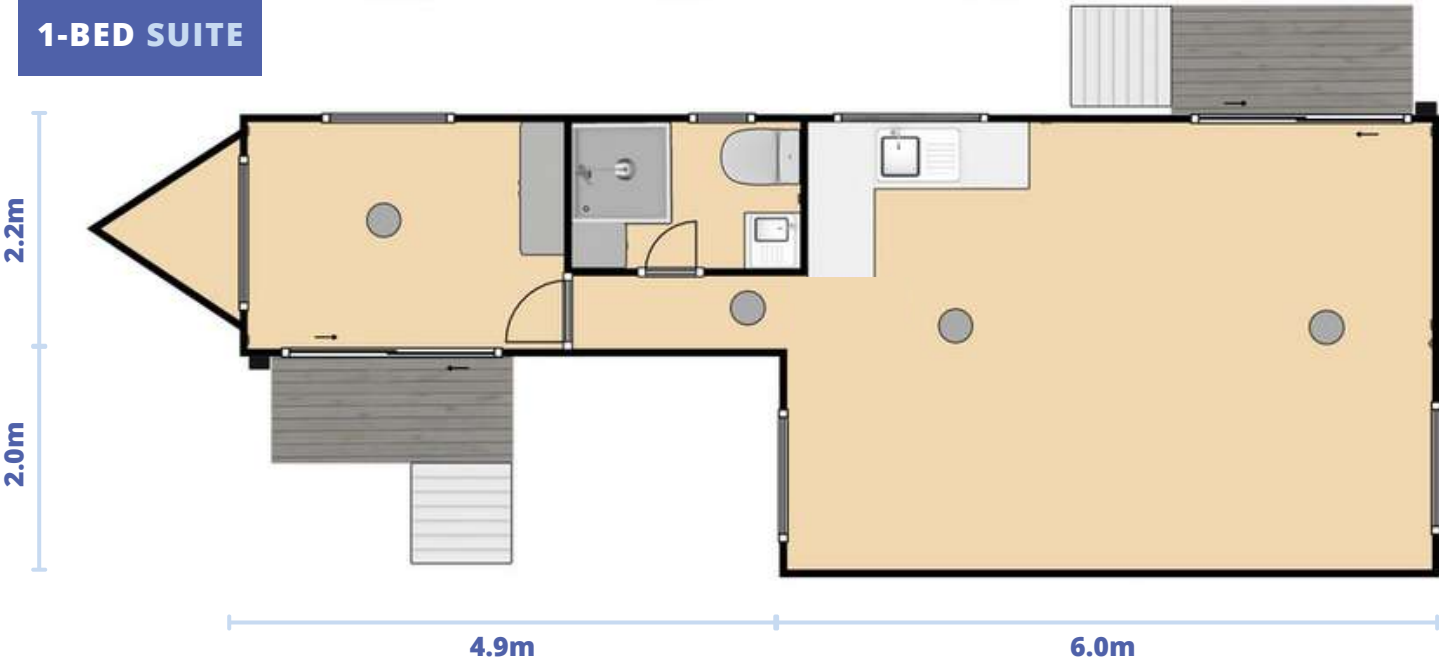
- 1** Our 10.9m Expandable Towable Mobile Cabin
- 2** Our 10.9m Non-Expandable Towable Mobile Cabin
- 3** Our 7.9m Expandable Towable Mobile Cabin
- 4** Our 7.9m Non-Expandable Towable Mobile Cabin
- 5** Our 5.9m Expandable Towable Mobile Cabin
- 6** Our 5.9m Non-Expandable Towable Mobile Cabin
- 7** Our 3.9m Expandable Towable Mobile Cabin
- 8** Our 3.9m Non-Expandable Towable Mobile Cabin
- 9** Standard Inclusions List
- 10** What You Can Customise?

# 10.9M EXPANDABLE SUITE

## 2-BED SUITE



## 1-BED SUITE



## WHAT'S INCLUDED?

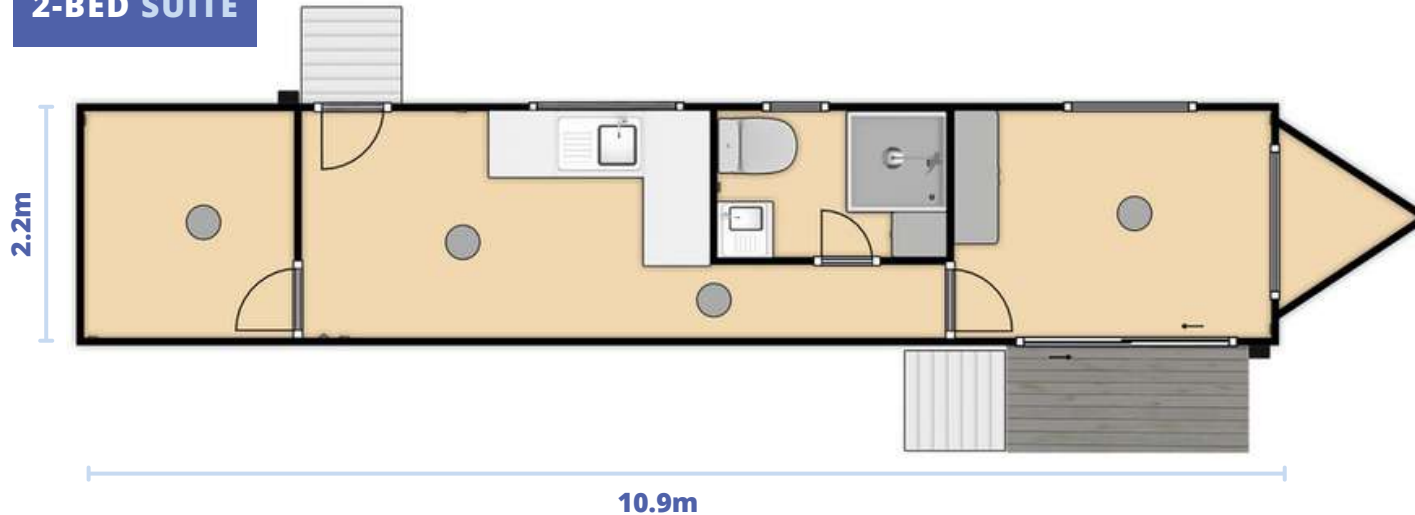
- 1 or 2 Bedroom Apartment
- Full-Sized Bathroom with Optional Laundry Space (Sink, Toilet, Shower, and Linen Cupboard)
- Kitchenette with Custom Cabinetry (Sink, Benchtops, Custom Cabinetry)
- Custom wardrobe in bedroom
- Powerpoints and Lights Custom Fitted
- Separate Bedroom(s) for Living
- Sliding Glass Doors and Multiple Windows
- Plumbed and Wired Ready to Tow
- Fold-Down Patio Included
- Perfect Size for Single/Couple or Family Living
- Up to 35.98 SqM
- Total length 12.4m

**Any floor plan can be customised and altered to best suit your needs!**

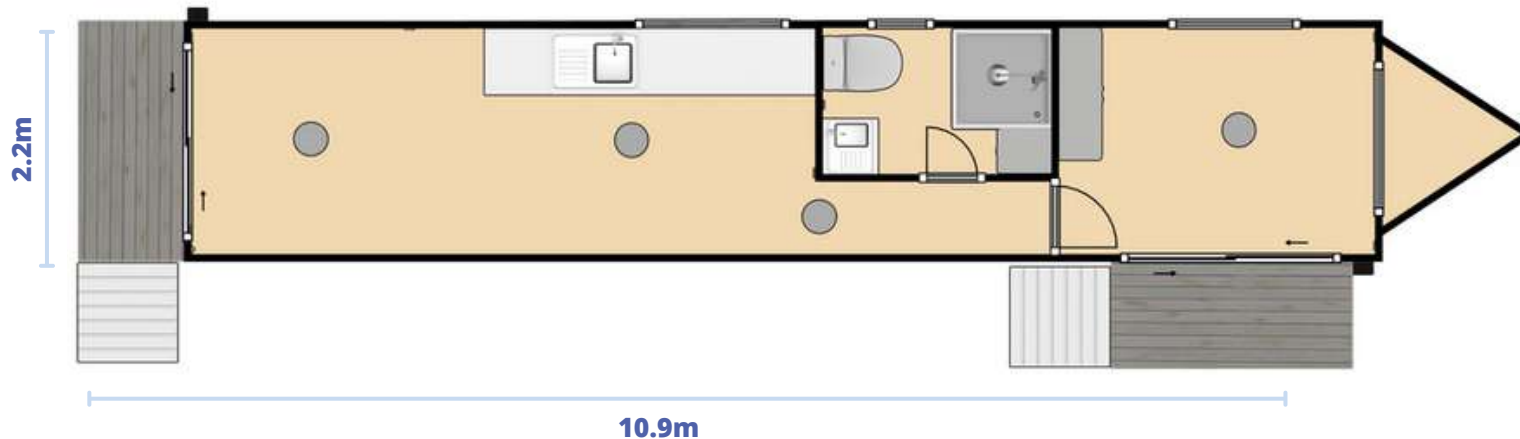
**\$72,995**  
 with ALL  
 Standard Inclusions

# 10.9M NON-EXPANDABLE SUITE

## 2-BED SUITE



## 1-BED SUITE



## WHAT'S INCLUDED?

- 1 or 2 Bedroom Apartment
- Full-Sized Bathroom with Optional Laundry Space (Sink, Toilet, Shower, and Linen Cupboard)
- Kitchenette with Custom Cabinetry (Sink, Benchtops, Custom Cabinetry)
- Custom wardrobe in bedroom
- Powerpoints and Lights Custom Fitted
- Separate Bedroom(s) for Living
- Sliding Glass Doors and Multiple Windows
- Plumbed and Wired Ready to Tow
- Fold-Down Patio Included
- Perfect Size for Single/Couple or Family Living
- Total length 12.4m

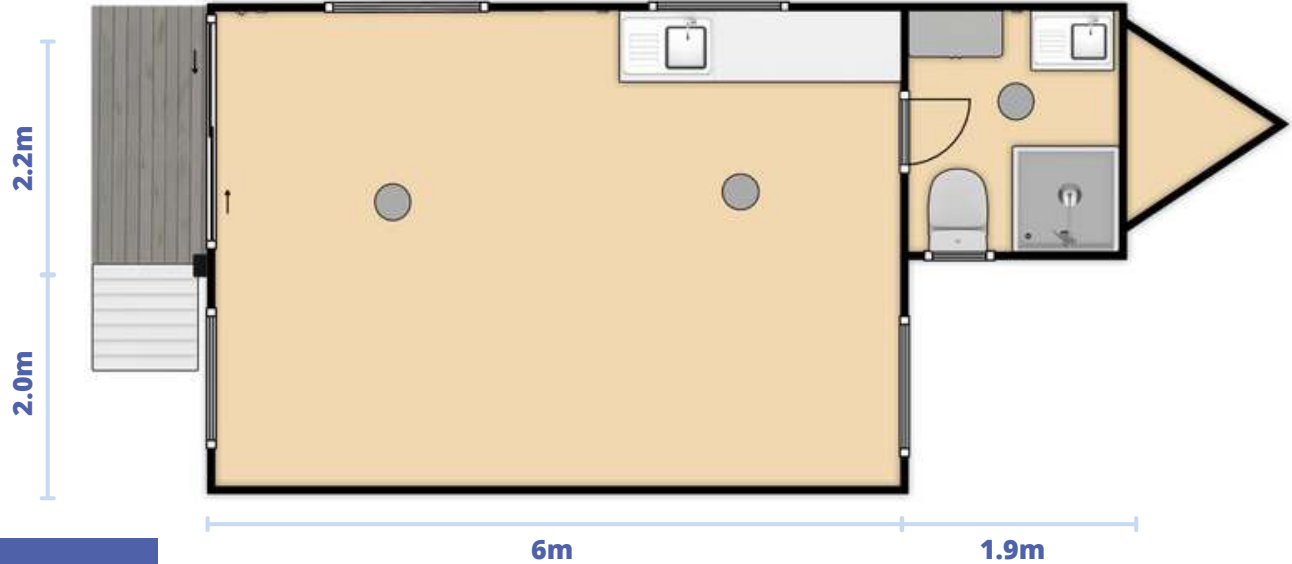
**Any floor plan can be customised and altered to best suit your needs!**

**\$60,995**

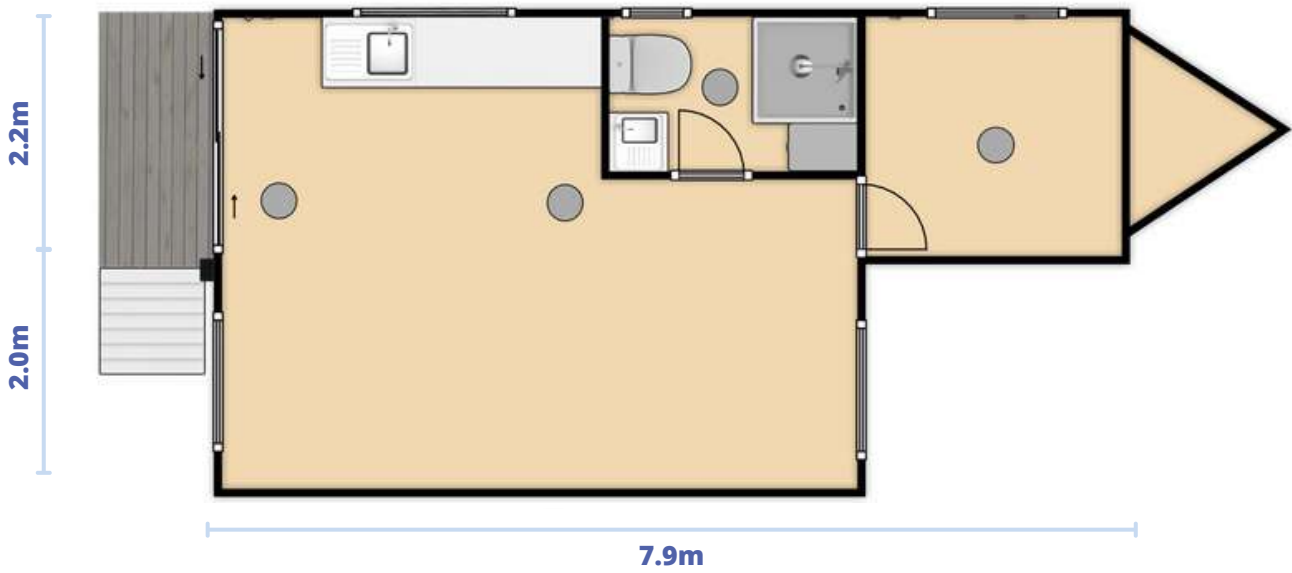
**with ALL  
Standard Inclusions**

# 7.9M EXPANDABLE SUITE

## STUDIO SUITE



## 1-BED SUITE



## WHAT'S INCLUDED?

- Large-Sized Studio or 1-Bedroom Apartment
- Full-Sized Bathroom (Sink, Toilet, Shower, and Linen Cupboard)
- Kitchenette with Custom Cabinetry (Sink, Benchtops, Custom Cabinetry)
- Powerpoints and Lights Custom Fitted
- Sliding Glassdoor and Multiple Windows
- Fold-Down Patio Included
- Perfect Size for Single or Couple Living
- Total length 9.4m

Any floor plan can be customised and altered to best suit your needs!

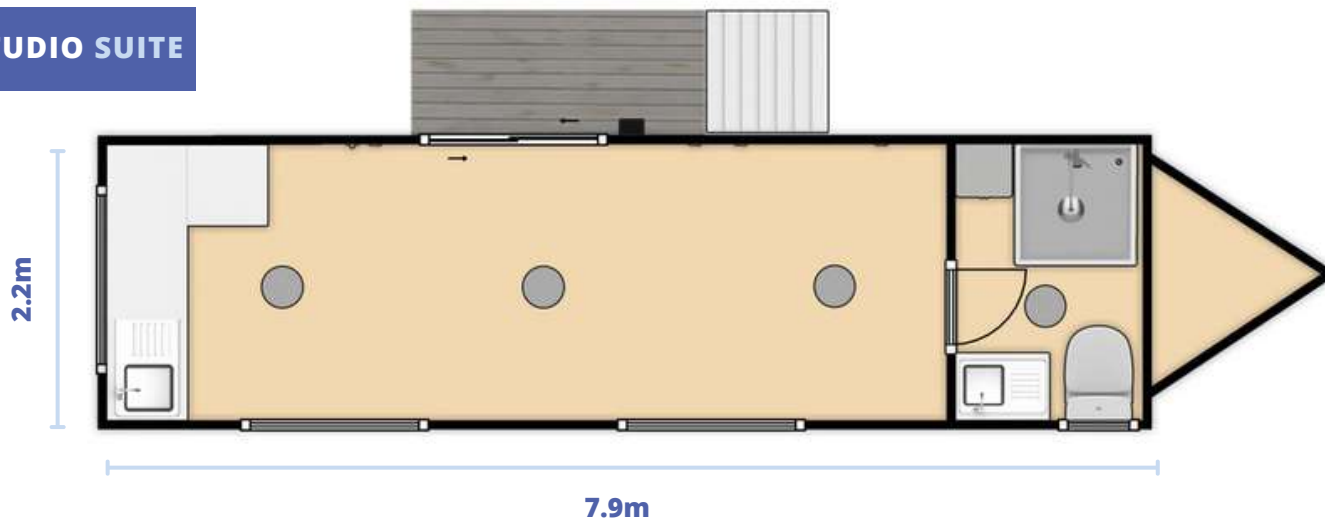
**\$56,995**  
 with ALL  
 Standard Inclusions

# 7.9M NON-EXPANDABLE SUITE

## 1-BED SUITE



## STUDIO SUITE



## WHAT'S INCLUDED?

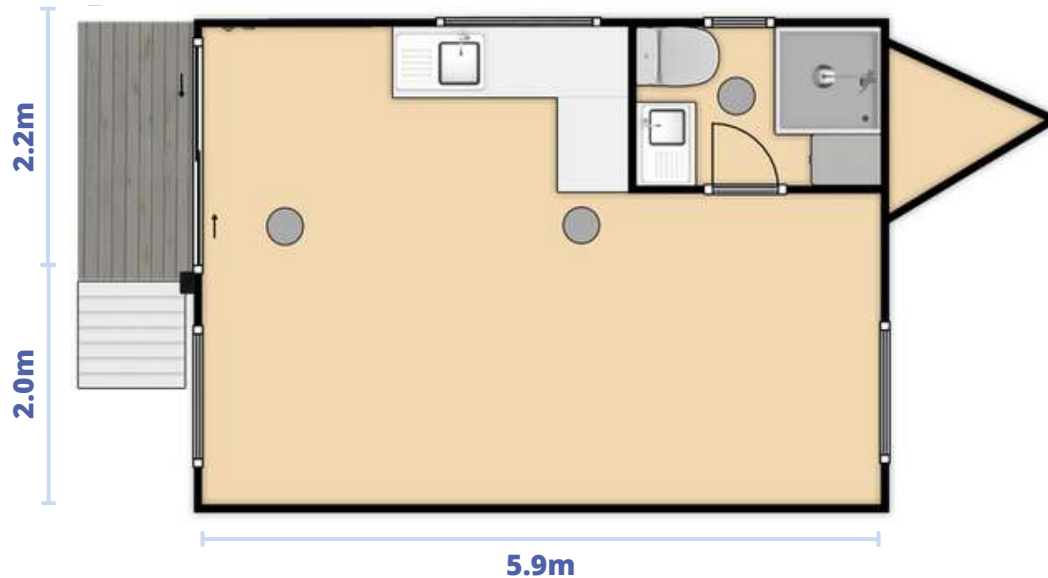
- Large-Sized Studio Apartment
- Full-Sized Bathroom (Sink, Toilet, Shower, and Linen Cupboard)
- Kitchenette with Custom Cabinetry (Sink, Benchtops, Custom Cabinetry)
- Powerpoints and Lights Custom Fitted
- Sliding Glassdoor and Multiple Windows
- Fold-Down Patio Included
- Perfect Size for Single or Couple Living
- Total length 9.4m

**Any floor plan can be customised and altered to best suit your needs!**

**\$46,995**

**with ALL  
Standard Inclusions**

# 5.9M EXPANDABLE SUITE



## WHAT'S INCLUDED?

- Studio Apartment
- Full-Sized Bathroom (Sink, Toilet, Shower, and Linen Cupboard)
- Kitchenette with Custom Cabinetry (Sink, Benchtops, Custom Cabinetry)
- Powerpoints and Lights Custom Fitted
- Sliding Glassdoor on Sides or Rear
- Fold-Down Patio and Stairs Included
- Perfect Size for Single or Couple Living
- Total length 7.4m

**Any floor plan can be customised and altered to best suit your needs!**

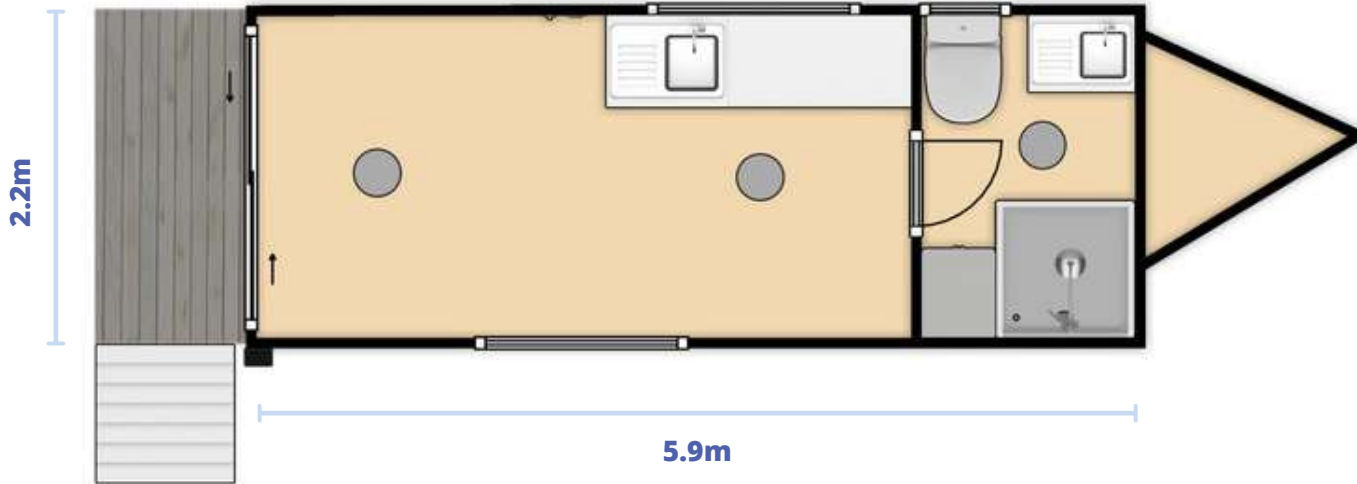
## STUDIO SUITES



# \$48,995

with ALL  
Standard Inclusions

# 5.9M NON-XPANDABLE SUITE

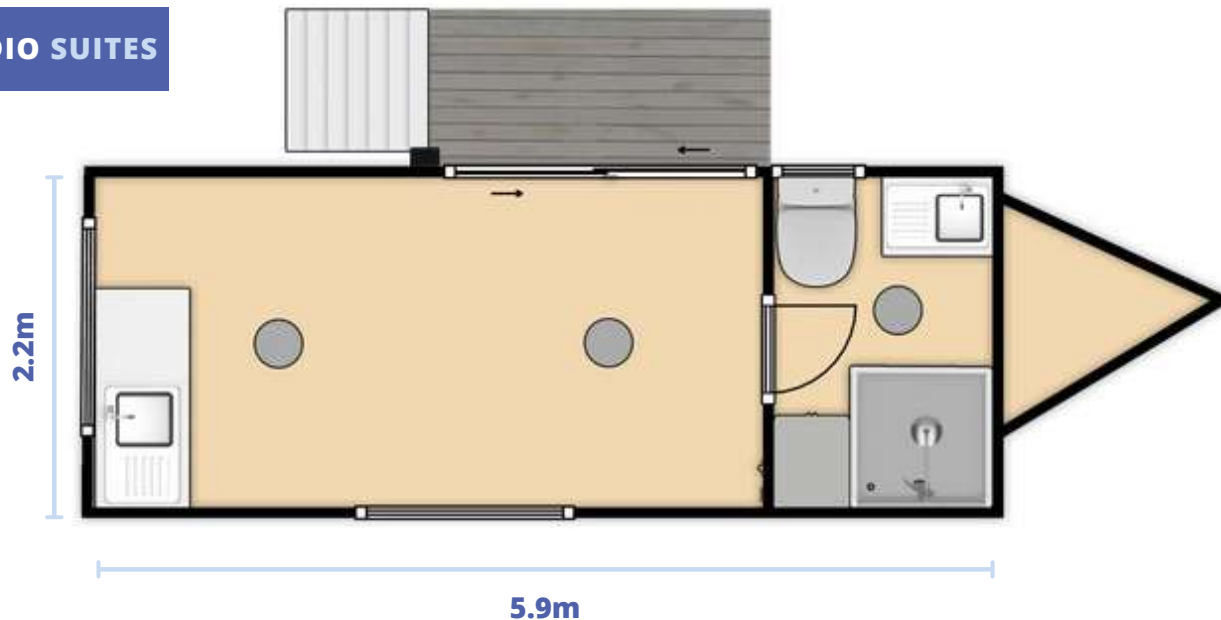


## WHAT'S INCLUDED?

- Studio Apartment
- Full-Sized Bathroom (Sink, Toilet, Shower, and Linen Cupboard)
- Kitchenette with Custom Cabinetry (Sink, Benchtops, Custom Cabinetry)
- Powerpoints and Lights Custom Fitted
- Sliding Glassdoor on Sides or Rear
- Fold-Down Patio and Stairs Included
- Perfect Size for Single or Couple Living
- Total length 7.4m

**Any floor plan can be customised and altered to best suit your needs!**

## STUDIO SUITES



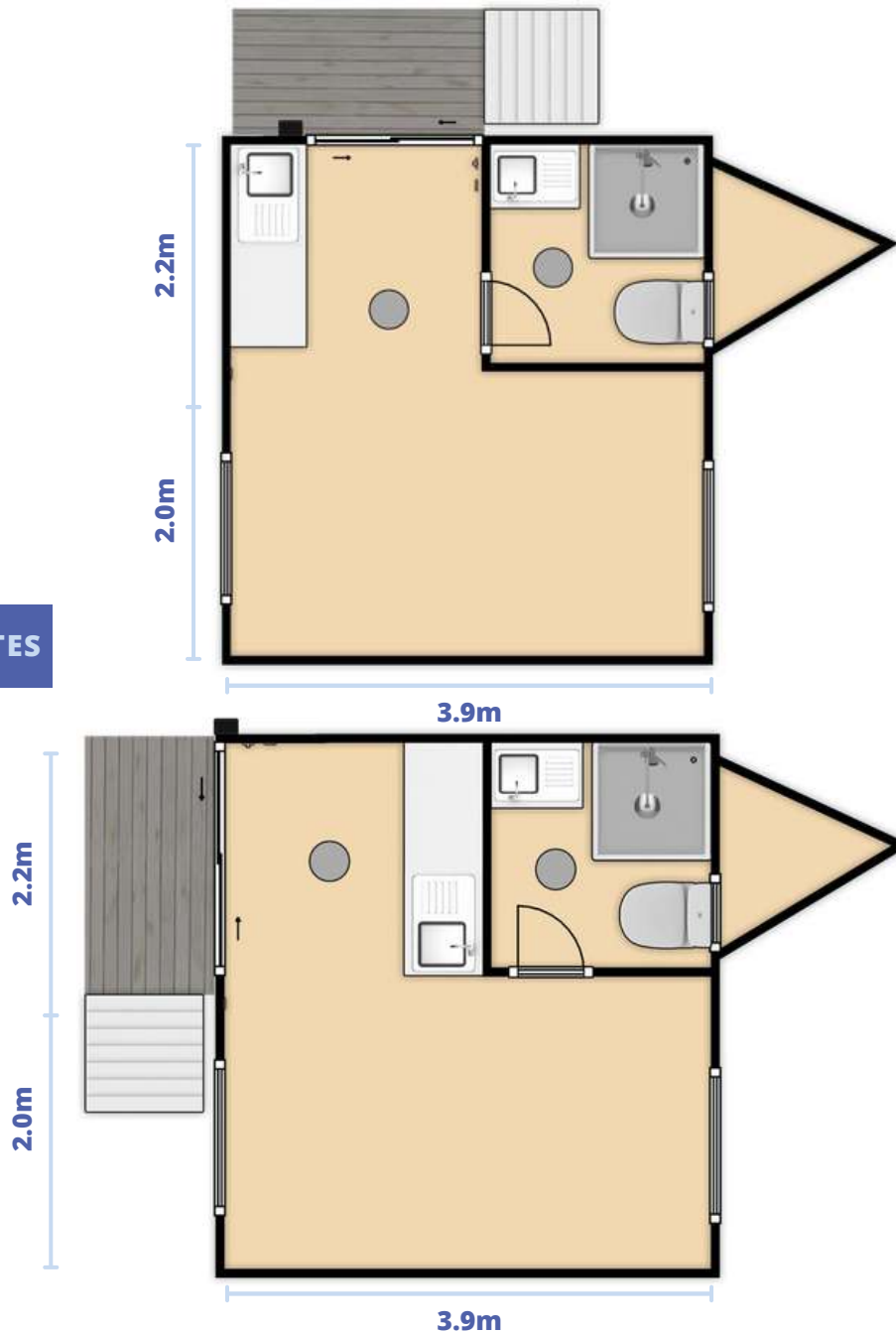
**\$38,995**

**with ALL  
Standard Inclusions**



# 3.9M EXPANDABLE SUITE

## STUDIO SUITES



## WHAT'S INCLUDED?

- Typically Used as Office Space / Storage / Man Cave / Extra Room
- Studio Apartment on Wheels
- Full-Sized Bathroom (Sink, Toilet, and Shower)
- Kitchenette with Custom Cabinetry (Sink, Benchtops, Custom Cabinetry)
- Can Add Custom Cabinetry
- Powerpoints and Lights Custom Fitted
- Sliding Glassdoor on Sides or Rear
- Fold-Down Patio and Stairs Included
- Perfect Size for Single or Couple Living
- Total length 5.4m

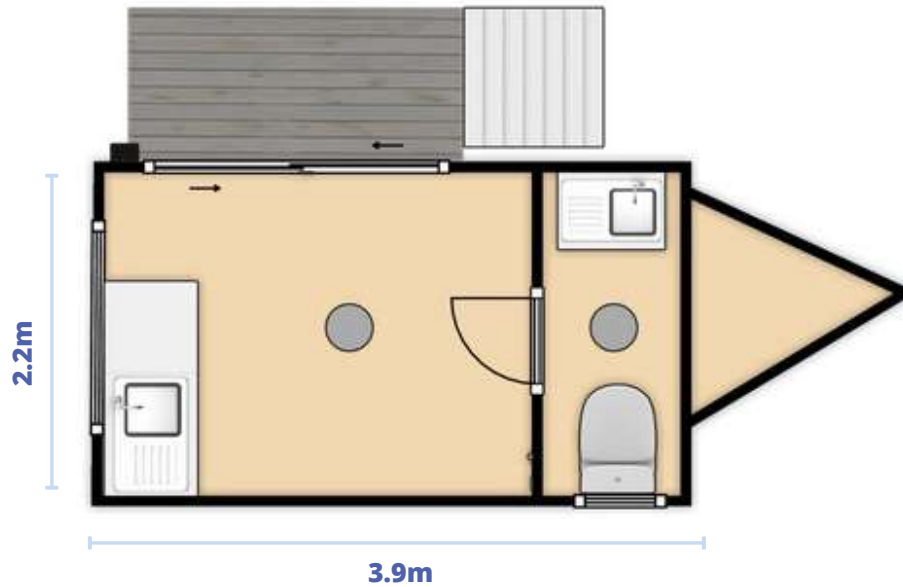
**Any floor plan can be customised and altered to best suit your needs!**

# \$36,995

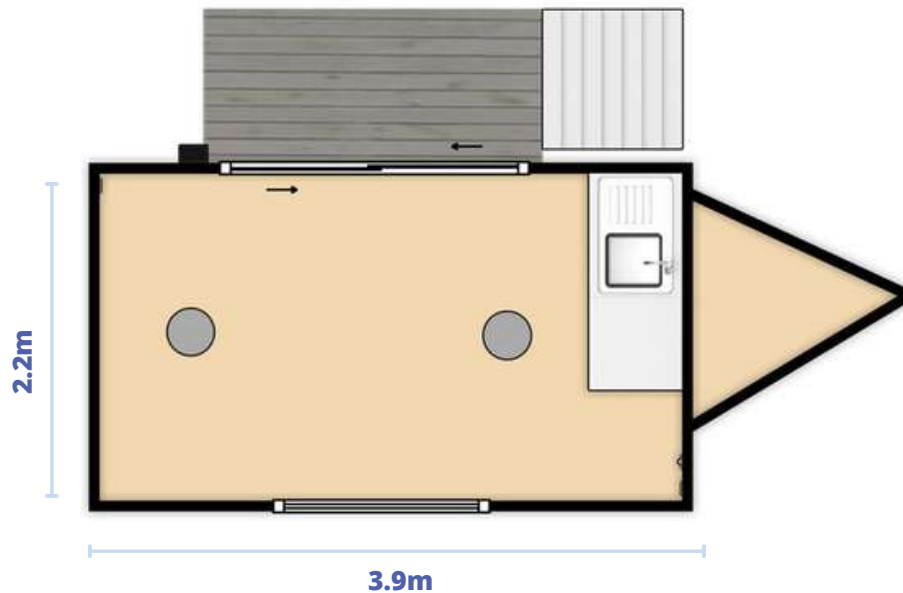
**with ALL  
Standard Inclusions**

# 3.9M NON-EXPANDABLE SUITE

**SITE OFFICE**



**HOME OFFICE**



## WHAT'S INCLUDED?

- Typically Used as Office Space / Storage / Man Cave / Extra Room
- Studio Apartment on Wheels
- Basic Kitchenette with Custom Cabinetry (Sink, Benchtops, Custom Cabinetry)
- Additional Custom Cabinetry Available
- Powerpoints and Lights Custom Fitted
- Sliding Glassdoor on Sides or Rear
- Fold-Down Patio and Stairs Included
- Perfect Size for Single or Couple Living
- Total length 5.4m

**Any floor plan can be customised and altered to best suit your needs!**

**\$27,995**

**with ALL  
Standard Inclusions**

# KEY SPECIFICATIONS & INCLUSIONS

## KITCHEN

- Custom Stone Bench Top
- Custom Cupboard/Draws with Soft Close Hinges
- Overheads Kitchen Cupboards
- Electric Range Hood with Fan & Light
- All Black Residential Fittings Throughout
- Several Double Power Points
- Stainless Steel Single Bowl Sink & Drain
- Optional Microwave, Washing Machine, or Dishwasher Provisional Spaces

## INTERNAL SPECS

- Walls and Ceiling - 75mm Thick Fully Insulated EPS Sandwich Panelling (Internal and External)
- Double Glazed ADR Windows with Hard Mesh Mosquito Nets and Roller Blinds
- Wired Ready for Mains 15amp Power
- Varied LED Ceiling Lights
- Several Double Power Points
- Antenna Connection Installed
- Bamboo Flooring Throughout
- Additional Wardrobe Storage (10.9m Models Only)

## BATHROOM

- Vanity with Sink and Storage Beneath
  - Over Sink Cupboard with Mirror
  - Ceramic residential toilet
  - Shower with Sliding Glass Door (900mm x 900mm)
  - All Black Residential Fittings Throughout
  - Bathroom Window (1000mm x 600mm)
  - Linen Cupboard (Varied Sizes)
  - Several Double Point Powers
- (Not included in 3.9m non expandable model)

## EXTERNAL SPECS

- Walls and Ceiling - 75mm Thick Fully Insulated EPS Sandwich Panelling (Internal and External)
- 2m x 1m Fold Out Decking with Stainless Steel Stairs
- Varied LED Ceiling Lights
- Double Power Points Either End of the Trailer Chassis
- Awnings with Struts Over All Windows for Extra Security and Protection During Transit
- Up to 2m Wide Sliding Glass Door for Entry
- Heavy-duty 500kg Rated Stabiliser Legs

## TRAILER CHASSIS

- 3.5T Rated Dual-Axle or 4.5T Rated Tri-Axle Custom Built Trailer
- 195/R14 Tyres and Rims Including Spare
- Electric Brakes on All Wheels
- Break-Away System Fitted - Road Ready
- 50mm or 70mm Coupling
- Varied Heavy Duty Stabiliser Legs
- Expandable Section with Stabiliser Legs and Strut Assisted
- Hot Dip Galvanised Custom Trailer
- Standard Driving Brake Lights, Indicators, and Reflectors
- 4-6 High Wind Anchor Points Welded on the Trailer Chassis

## ADDITIONAL INDO

- VIN Number and Compliance Approval
- 12 Month Parts Warranty
- 5 Year Structural Warranty
- Standard third party appliance and component supplier warranties apply

# WHAT CAN YOU CUSTOMISE?

## MAKE IT FIT FOR YOU!

The placement of windows, doors, power points, lights, and even rooms can be customised and altered to best meet your needs.

Varied Stone Bench Top, Bamboo Flooring, and Cabinetry Colour Options Available

Not one-floor plan or cabin design will be the same. Each cabin can be built as an empty shell or fully transformed, the possibilities are endless!

### **KEY OPTIONAL EXTRAS**

2.5kw or 3.5kw Mitsubishi Split System Air  
Conditioner

Continuous On-Demand Gas Hot Water System

2-Burner or 4-Burner Stove Top

Eco/Composting Toilet Options Available



**Contact:** [info@cabintech.com.au](mailto:info@cabintech.com.au) or (07) 5528 8858

**Website:** [www.cabintech.com.au](http://www.cabintech.com.au)

[www.instagram.com/CabinTechAU](https://www.instagram.com/CabinTechAU)

[www.facebook.com/CabinTechAUS](https://www.facebook.com/CabinTechAUS)

**Showroom/Warehouse:** 170 Brisbane Rd, Arundel QLD 4214



**SCAN FOR  
OUR WEBSITE**

