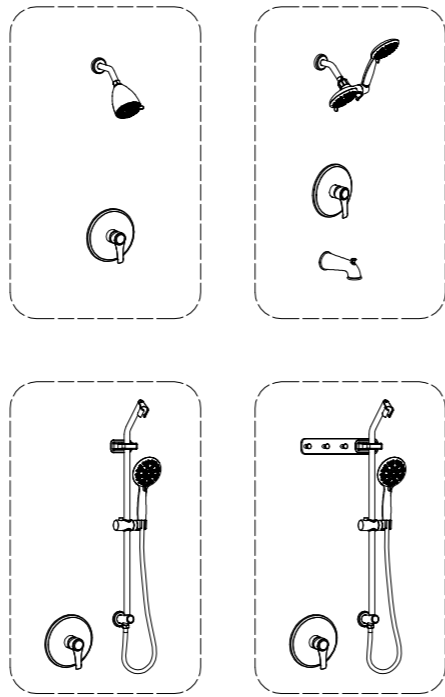


## WALL MOUNTED BATHTUB FAUCET INSTALLATION



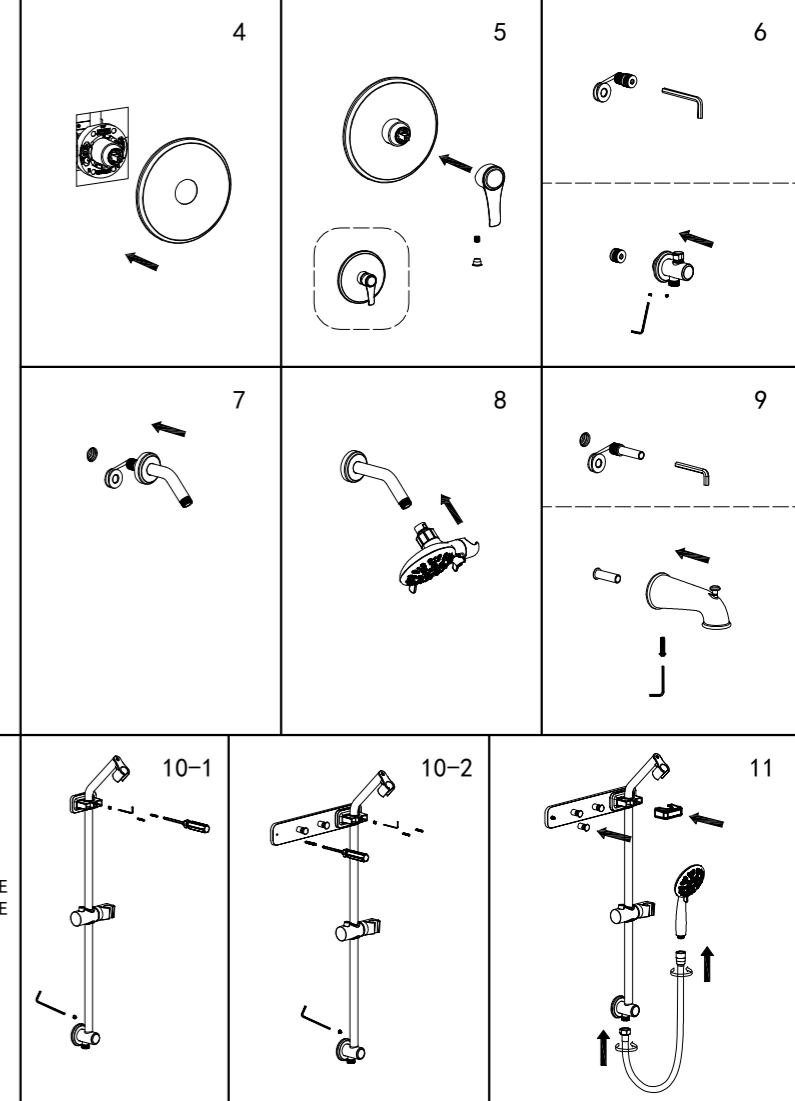
### PRODUCT INTRODUCTION

#### (1) Description:

1. After you unpack the product, please check the physical objects and the corresponding accessories shown in the picture to check whether the accessories are complete. If there is any defect, please contact the local dealer immediately.
2. The appearance of the product is subject to the actual product, and the schematic diagram is for reference only.
3. Accessories are subject to change without notice without affecting the use case.
4. Thank you for choosing our company's products.

#### (2) Notice

1. The main body has been tested and debugged at the factory, please do not disassemble and assemble by yourself, so as not to affect the performance.
2. Before installing the faucet, be sure to remove the impurities and sludge in the pre-buried water pipe to avoid blockage and affect the water outlet function.
3. After installation, please check whether the joints are tightly connected to ensure that there is no leakage.
4. The left side of the pipe installation is hot water, and the right side is WATERFALL cold water. Do not install it in reverse.



After-sales Service Hotline: 3473687521