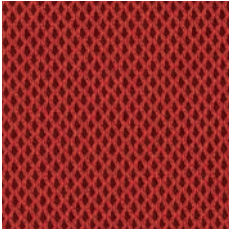


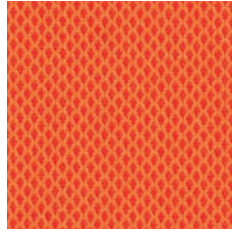
Collection
Mesh, leather, vinyl

viasit[®]

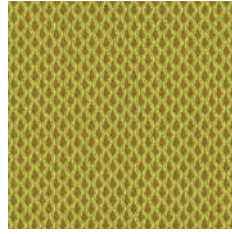




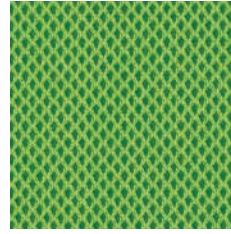
G3-7261
Harlequin



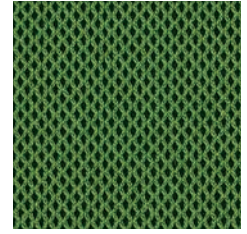
G3-7275
Harlequin



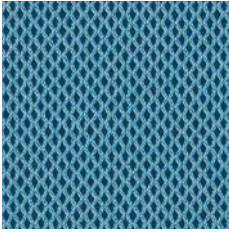
G3-7264
Harlequin



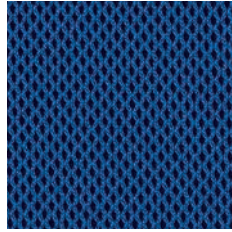
G3-7268
Harlequin



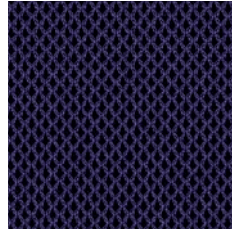
G3-7273
Harlequin



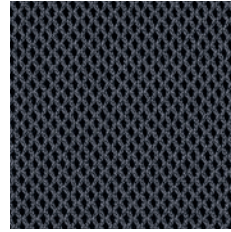
G3-7267
Harlequin



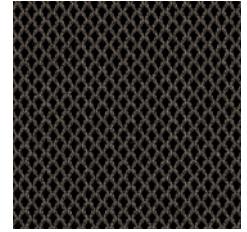
G3-7265
Harlequin



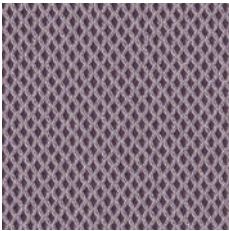
G3-7262
Harlequin



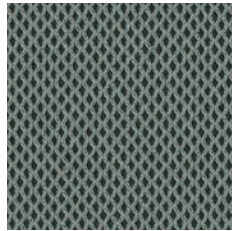
G3-7266
Harlequin



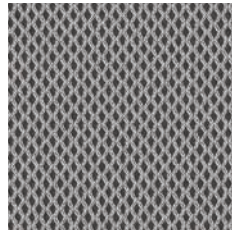
G3-7271
Harlequin



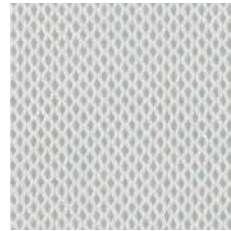
G3-7274
Harlequin



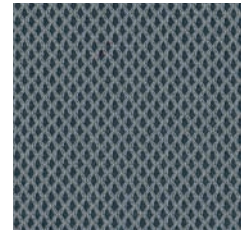
G3-7272
Harlequin



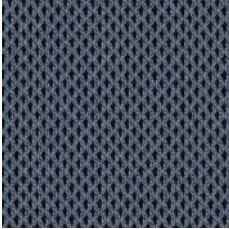
G3-7270
Harlequin



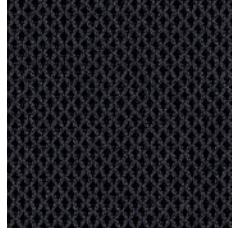
G3-7269
Harlequin



G3-7263
Harlequin



G3-7276
Harlequin



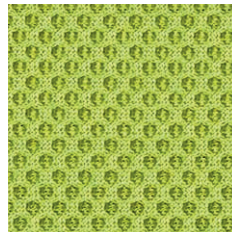
G3-7260
Harlequin



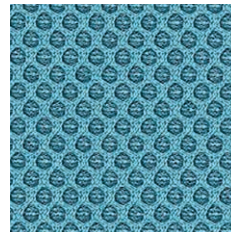
G3-5295
Runner



G3-5294
Runner



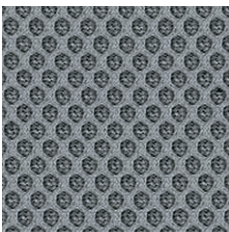
G3-5298
Runner



G3-5296
Runner



G3-5297
Runner



G3-5290
Runner



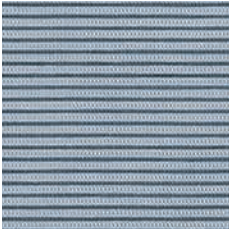
G3-5292
Runner



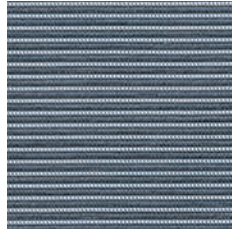
G3-5291
Runner



G3-5293
Runner



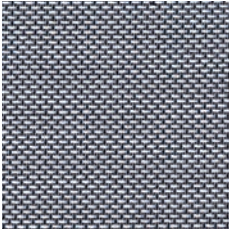
7500 - Scope Rib Mesh



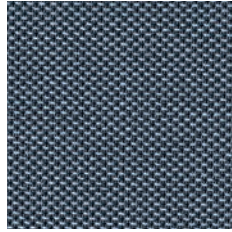
7501 - Scope Rib Mesh



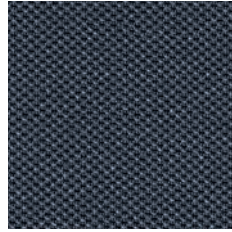
7502 - Scope Rib Mesh



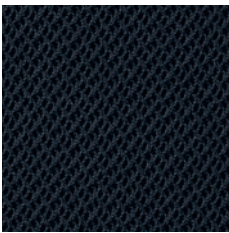
7306 - Scope Mesh



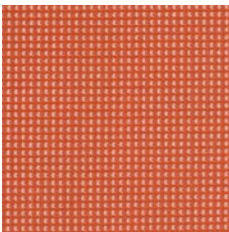
7305 - Scope Mesh



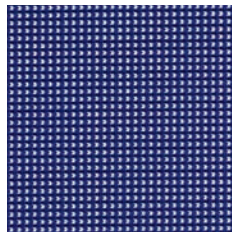
7304 - Scope Mesh



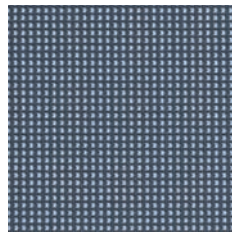
F2 - Knitted Mesh



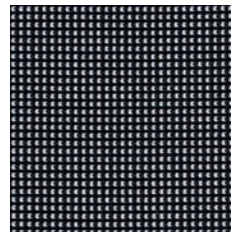
7301 - Linea



7302 - Linea



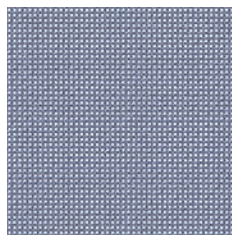
7303 - Linea



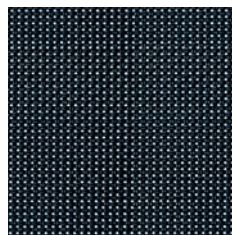
7300 - Linea



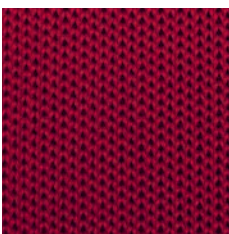
7397 - Klikit



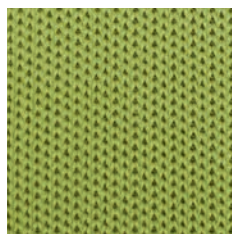
7396 - Klikit



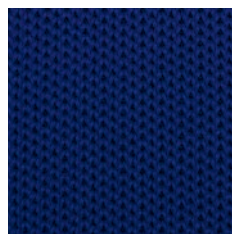
7395 - Klikit



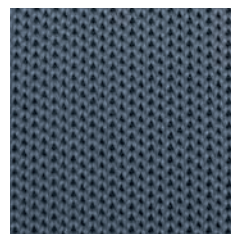
CoreChair - Form-fit Knit



CoreChair - Form-fit Knit



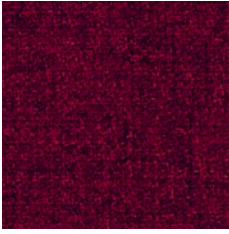
CoreChair - Form-fit Knit



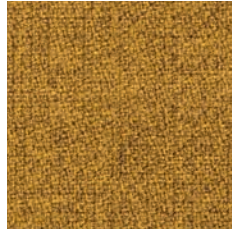
CoreChair - Form-fit Knit



CoreChair - Form-fit Knit



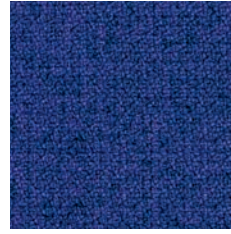
G3-5328
Step Melange



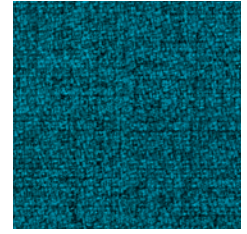
G3-5318
Step Melange



G3-5313
Step Melange



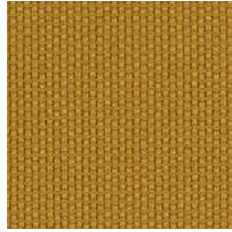
G3-5317
Step Melange



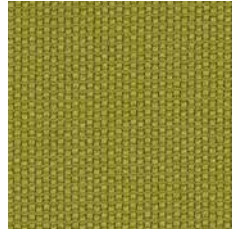
G3-5311
Step Melange



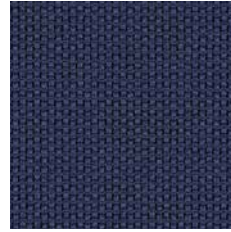
1318-Toleo Spin



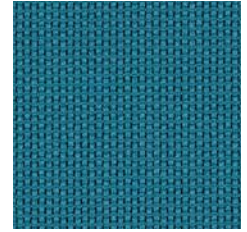
1316-Toleo Spin



1314-Toleo Spin



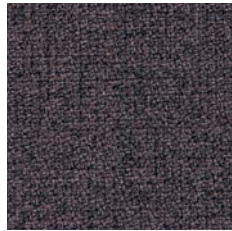
1311-Toleo Spin



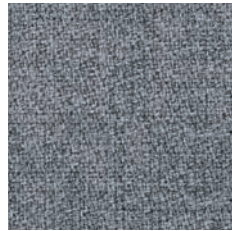
1312-Toleo Spin



G3-5329
Step Melange



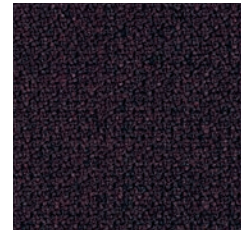
G3-5319
Step Melange



G3-5316
Step Melange



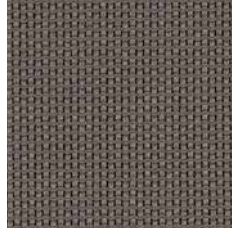
G3-5315
Step Melange



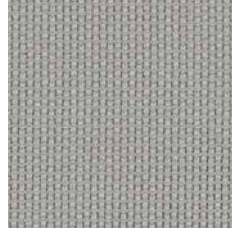
G3-5314
Step Melange



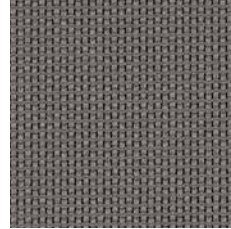
1319-Toleo Spin



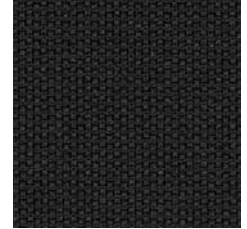
1317-Toleo Spin



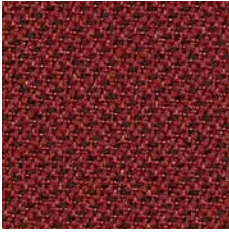
1315-Toleo Spin



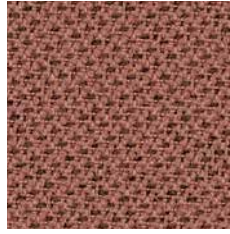
1313-Toleo Spin



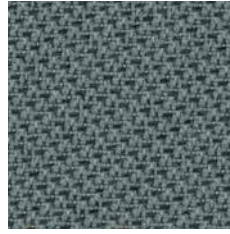
1310-Toleo Spin



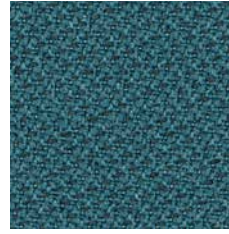
G1-1373
Tonal



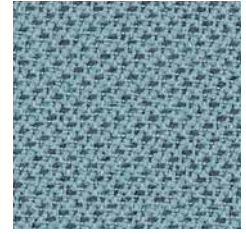
G1-1374
Tonal



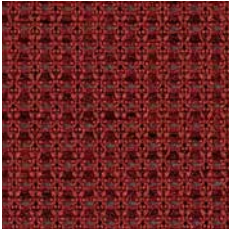
G1-1372
Tonal



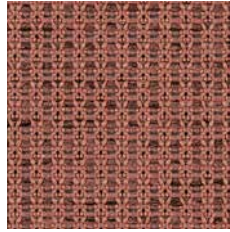
G1-1376
Tonal



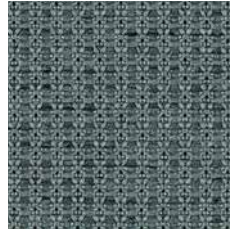
G1-1375
Tonal



G2-1383
Tale



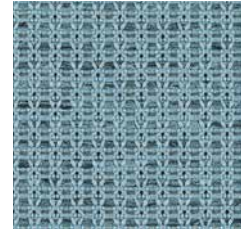
G2-1384
Tale



G2-1382
Tale



G2-1386
Tale



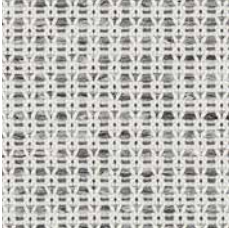
G2-1385
Tale



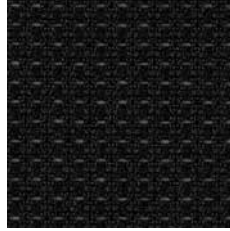
G1-1371
Tonal



G1-1370
Tonal



G2-1381
Tale



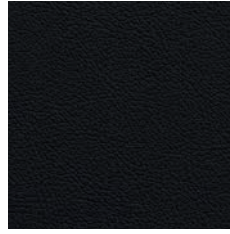
G2-1380
Tale



G6-638
Objekt



G6-639
Objekt



G6-6390
Objekt



G6-636
Classic Nappa



G6-640
Classic Nappa



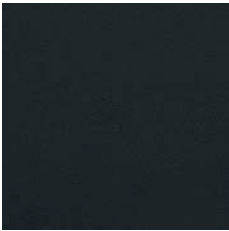
G6-643
Classic Nappa



G6-642
Classic Nappa



G6-641
Classic Nappa



G6-610
Palermo



G7-664
Naturale



G7-663
Naturale



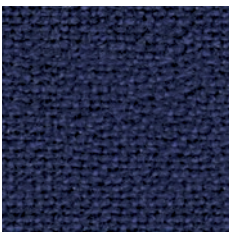
G7-662
Naturale



G7-661
Naturale



G7-660
Naturale



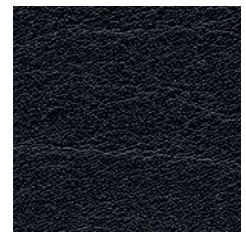
G4-119L
Hi Tech



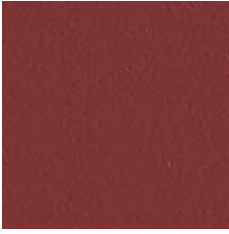
G4-123L
Hi Tech



G4-127L
Hi Tech



G4-132L
Mano S



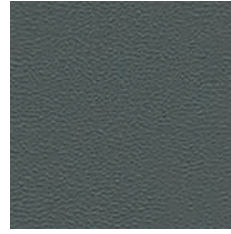
G7-3212
Stamskin One



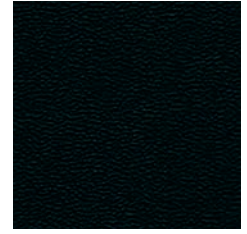
G7-3214
Stamskin One



G7-3213
Stamskin One



G7-3211
Stamskin One



G7-3210
Stamskin One



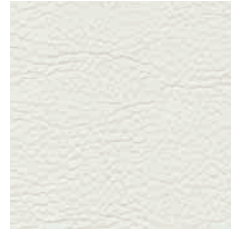
G4-3022
Sotega



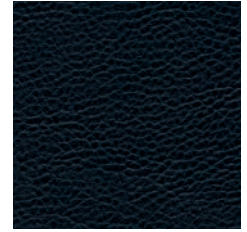
G4-3024
Sotega



G4-3023
Sotega



G4-3025-30
Sotega



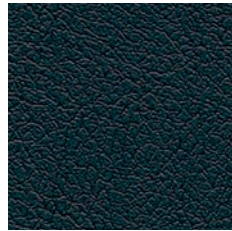
G4-3021
Sotega



G4-3080
Sorrento



G4-3082
Sorrento



G4-3081
Sorrento



G3-3011
Palena



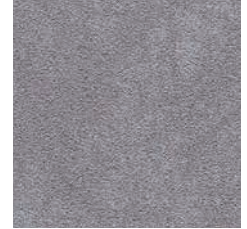
G3-3014
Palena



G3-3015
Palena



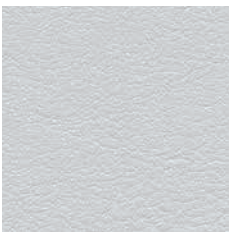
G3-3010
Palena



G3-3013
Palena



G3-3012
Palena



G3-311T
Tundra



G3-381T
Tundra



G3-310T
Tundra

CoreChair Knit	Kobleder
Composition	100% polyester
Flammability	BS EN 1021 1&2 Cigarette and Match / B1 (DIN EN 4102)
Weight	500 g/lm
Width	-
Pilling	4 / 5 (EN ISO 12945-2)
Light fastness	6 / 8 (EN ISO 105-B02)
Rubbing fastness	> 4 (EN ISO 105-X12)
Abrasion	≥ 35,000 rubs Martindale (EN ISO 12947-2)
Environment	STANDARD 100 by OEKO-TEX®

F2 Knitted Mesh	Trisit
Composition	Polyamide (PA6.6), Elastan
Weight	156 g/lm
Environment	STANDARD 100 by OEKO-TEX®

Harlequin	G3 (Gabriel)
Composition	77% polyester, 23% post-consumer recycled polyester
Flammability	BS EN 1021 1&2 Cigarette and Match CA TB 117-2013 Will also pass other flammability standards. Flame retardant performance is dependent upon the foam used. Contains no flame retardant chemicals.
Weight	510 g/lm
Width	160 cm
Pilling	5 / 5 (EN ISO 12945-2)
Light fastness	5-7 / 8 (EN ISO 105-B02)
Rubbing fastness	4-5 / 5, 4-5 / 5 (EN ISO 105x12 (wet, dry))
Abrasion	100,000 rubs Martindale (EN ISO 12947-2)
Environment	STANDARD 100 by OEKO-TEX® / EU Ecolabel / Cradle to Cradle Certified® Bronze

Hi-Tech	G4 (Camira)
Composition	60% Polypropylene, 29% Wool, 10% Viscose, 1% Carbon Fibre
Conductive	Electrically conductive
Flammability	EN 1021 - 1&2 (cigarette & match) / BS 7176 Low Hazard
Weight	385 g /m ²
Width	140 cm
Light fastness	5 / 8 (EN ISO 105-B02)
Rubbing fastness	5 / 5, 5 / 5 (EN ISO 105x12 (wet, dry))
Abrasion	4 / 5, 4 / 5 (EN ISO 105x12 (wet, dry))

Klikit Mesh	Batylina, Serge Ferrari
Composition	PVC coated synthetic fibre
Flammability	M2 - NFP92-507 / B1 - DIN4102-1 / CAL TB117 / IMO MSC.307 (88) (2010 FTP Code) Annex 1 Part 8
Weight	500 g/lm
Width	180 cm
Abrasion	> 120,000 rubs Martindale (EN ISO 12947-2)
Environment	Greenguard Gold

Linea Mesh	Krall & Roth
Composition	75% polyester, 25% polyamide
Flammability	DIN EN 1021: 2006 part 1 (cigarette test) when tested with non flame retardant foam B3 density 22 kg/m ³ minimum ignitability classification of the upholstery composite according to DIN 66084 P-c
Weight	420 g/lm
Width	120 cm
Light fastness	5-7 / 8 (EN ISO 105-B02)
Rubbing fastness	4-5 / 5, 4-5 / 5 (EN ISO 105x12 (wet, dry))
Abrasion	40,000 rubs Martindale (EN ISO 12947-2)

Mano-S	G4 (Continental)
Composition	approx. 90% PVC-compound approx. 10% CO/PES-knitted fabric
Conductive	Electrically conductive
Weight	650 g/m ²
Width	137 cm
Thickness	1.1 mm

Runner	G3 (Gabriel)
Composition	80% polyester / 20% post-consumer recycled polyester
Flammability	CA TB 117-2013 / BS EN 1021-1 Cigarette / BS EN 1021 1&2 Cigarette and Match / Class Uno UNI 9175 Class 2 I EMME Will also pass other flammability standards. Flame retardant performance is dependent upon the foam used. Contains no flame retardant chemicals.
Weight	510 g/lm
Width	160 cm
Pilling	5 / 5 (EN ISO 12945-2)
Light fastness	5-7 / 8 (EN ISO 105-B02)
Rubbing fastness	4-5 / 5, 4-5 / 5 (EN ISO 105x12 (wet, dry))
Abrasion	70,000 rubs Martindale (EN ISO 12947-2)
Environment	STANDARD 100 by OEKO-TEX®, EU Ecolabel

Scope Mesh	Krall & Roth
Composition	66% polyester, 34% polyamide
Flammability	DIN EN 1021: 1994-01 part 1 (cigarette test) when tested with non flame retardant foam B3 density 23 kg/m ³ minimum ignitability classification of the upholstery composite according to DIN 66084 P-c
Weight	350 g/lm
Width	144 cm
Light fastness	5-7 / 8 (EN ISO 105-B02)
Rubbing fastness	4-5 / 5, 4-5 / 5 (EN ISO 105x12 (wet, dry))
Abrasion	≥ 50,000 rubs Martindale (EN ISO 12947-2)
Environment	200,000 rubs Martindale (EN ISO 12947-2)

Scope Rib Mesh	Krall & Roth
Composition	58% polyamide, 34% polyester, 8% polyacryl
Flammability	DIN EN 1021: 1994-01 part 1 (cigarette test) when tested with non flame retardant foam B3 density 23 kg/m ³ minimum ignitability classification of the upholstery composite according to DIN 66084 P-c
Weight	400 g/lm
Width	160 cm
Light fastness	5-6 / 8 (EN ISO 105-B02)
Rubbing fastness	4-5 / 5, 4-5 / 5 (EN ISO 105x12 (wet, dry))
Abrasion	190,000 rubs Martindale (EN ISO 12947-2)

Spin	Gabriel
Composition	100% Trevira CS
Flammability	NFP 92-503/504/505 M1 / DIN 4102 - B1 Class Uno UNI 8456 UNI 9174 / BS EN 1021-1 Cigarette BS EN 1021 1&2 Cigarette and Match / BS 5852 Crib 5 CA TB 117-2013 Will also pass other flammability standards. Flame retardant performance is dependent upon the foam used.
Weight	405 g/lm
Width	140 cm
Pilling	4-5 / 5 (EN ISO 12945-2)
Light fastness	5-8 / 8 (EN ISO 105-B02)
Rubbing fastness	4-5 / 5, 4-5 / 5 (EN ISO 105x12 (wet, dry))
Abrasion	70,000 rubs Martindale (EN ISO 12947-2)
Environment	STANDARD 100 by OEKO-TEX® / EU Ecolabel

Tonal	G1 (Gabriel)
Composition	99% post-consumer recycled polyester / 1% polyester
Flammability	CA TB 117-2013 / ASTM E 84 Class I / BS EN 1021 1&2 Cigarette and Match / BS 476 Part 7 class I / DIN EN 13501-1 B-s1,d0(glued) Will also pass other flammability standards. Flame retardant performance is dependent upon the foam used. Contains no flame retardant chemicals.
Weight	315 g/lm
Width	140 cm
Pilling	4-5 / 5 (EN ISO 12945-2)
Light fastness	6-8 / 8 (EN ISO 105-B02)
Rubbing fastness	4-5 / 5, 4-5 / 5 (EN ISO 105x12 (wet, dry))
Abrasion	100,000 rubs Martindale (EN ISO 12947-2)
Environment	STANDARD 100 by OEKO-TEX® / EU Ecolabel

Tale	G2 (Gabriel)
Composition	99% post-consumer recycled polyester / 1% polyester
Flammability	BS EN 1021-1 Cigarette / BS EN 1021 1&2 Cigarette and Match CA TB 117-2013 Will also pass other flammability standards. Flame retardant performance is dependent upon the foam used. Contains no flame retardant chemicals.
Weight	365 g/lm
Width	140 cm
Pilling	5 / 5 (EN ISO 12945-2)
Light fastness	6-8 / 8 (EN ISO 105-B02)
Rubbing fastness	4-5 / 5, 4-5 / 5 (EN ISO 105x12 (wet, dry))
Abrasion	100,000 rubs Martindale (EN ISO 12947-2)
Environment	STANDARD 100 by OEKO-TEX® / EU Ecolabel

Classic Nappa	G6 (Fiedler)
Composition	natural leather, ecological mineral tanning
Flammability	DIN EN 1021 - 1&2 (cigarette & match) / NF D 60-013:2005 / IMO-Resolution MSC.307
Thickness	1.0 / 1.2 mm
Tear strength	≥ 20 N/mm (EN ISO 3377-1)
Light fastness	≥ 4 / 8 (EN ISO 105-B02)
Rubbing fastness	3 - 4 / 5, ≥ 4 / 5 (EN ISO 11640 (wet, dry))
Origin	Europe

Naturale	G7 (Fiedler)
Composition	natural leather, ecological mineral tanning
Flammability	DIN EN 1021 - 1&2 (cigarette & match)
Thickness	1.0 / 1.2 mm
Tear strength	≥ 20 N/mm (EN ISO 3377-1)
Light fastness	≥ 3 / 8 (EN ISO 105-B02)
Rubbing fastness	≥ 3 / 5, ≥ 3 / 5 (EN ISO 11640 (wet, dry))
Origin	Europe

Objekt	G6 (Fiedler)
Composition	natural leather, ecological mineral tanning
Flammability	DIN EN 1021 - 1&2 (cigarette & match) / NF D 60-013:2005 / IMO-Resolution MSC.307
Thickness	1.0 / 1.2 mm
Tear strength	≥ 20 N/mm (EN ISO 3377-1)
Light fastness	≥ 5 / 8 (EN ISO 105-B02)
Rubbing fastness	3 - 4 / 5, ≥ 4 / 5 (EN ISO 11640 (wet, dry))
Origin	Europe
Environment	Blue Angel (Blauer Engel)

Palermo	G6 (Fiedler)
Composition	natural leather, ecological mineral tanning
Flammability	DIN EN 1021 - 1&2 (cigarette & match)
Thickness	1.2 / 1.4 mm
Tear strength	≥ 20 N/mm (EN ISO 3377-1)
Light fastness	≥ 4 / 8 (EN ISO 105-B02)
Rubbing fastness	> 4 / 5, > 4 / 5 (EN ISO 11640 (wet, dry))
Origin	Europe

Palena	G3 (Continental)
Composition	90% PVC compound, 10% CO/PES-knitted fabric
Flammability	NF M2 / BS 5852 IS-0+1 / EN 1021 1+2 / DIN 4102 (Part 1, B2) / MVSS 302 / DIN 53438 (Part 2) / FAR 25.853 / ÖNORM B3825 flame resistant (B1) / ÖNORM A 3800-1 Q1, UNI 9175/87 (1. IM)
Weight	700 g/m²
Width	137 cm
Thickness	1.25 mm
Light fastness	≥ 5 / 8 (DIN EN ISO 105-B02)
Rubbing fastness	4 / 4 (DIN EN ISO 150-X12 (wet, dry))
Abrasion	> 50,000 rubs Martindale (EN ISO 12947-2)

Sorrento	G4 (Continental)
Composition	73% PVC compound, 25% CO fabric, 2% PU-finish
Flammability	DIN EN 1021 1+2 / BS 5852 IS-0+1 / MVSS 302
Weight	780 g/m²
Width	150 cm
Thickness	1.6 mm
Light fastness	≥ 5 / 8 (DIN EN ISO 105-B02)
Rubbing fastness	4,5 / 5, 4,5 / 5 (DIN EN ISO 150-X12 (wet, dry))
Abrasion	100,000 rubs Martindale (EN ISO 12947-2)

Sotega	G4 (Continental)
Composition	73% PVC compound, 25% CO fabric, 2% PU-finish
Weight	780 g/m²
Width	150 cm
Thickness	1.7 mm
Light fastness	≥ 5 / 8 (DIN EN ISO 105-B02)
Rubbing fastness	4,5 / 5, 4,5 / 5 (DIN EN ISO 150-X12 (wet, dry))
Abrasion	> 200,000 rubs Martindale (EN ISO 12947-2)

Stamskin One	G7 (Serge Ferrari)
Composition	Multi-layer composite / elastomer, polyester jersey
Flammability	Test cigarette / Match EN 1021.1-1021.2 / BS 5852 (Crib 5) / NFD60-013 (AM18) / CAL TB 117-2013 / M1/NFP92.507 / NFPA 260 / IMO MSC.307 (88) (201 FTP Code) Annex 1 part 8 / Aeronautical test FAR/JAR 28-853/855
Weight	650 g/m²
Width	144 cm
Thickness	0.8 mm
Light fastness	GS = 4 a 700h (ASTMG154:UVA340)
Abrasion	> 120,000 rubs Martindale (EN ISO 12947-2)

Tundra	G3 (Continental)
Composition	90% PVC compound, 10% CO fabric
Weight	680 g/m²
Width	137 cm
Thickness	1.0 mm
Light fastness	≥ 5 / 8 (DIN EN ISO 105-B02)
Rubbing fastness	4,5 / 5, 4,5 / 5 (DIN EN ISO 150-X12 (wet, dry))
Abrasion	> 100,000 rubs Martindale (EN ISO 12947-2)



Viasit Bürositzmöbel GmbH
Boxbergweg 4
D-66538 Neunkirchen

Viasit International Ltd.
104 – 110 Goswell Road
London EC1V 7DH
United Kingdom

www.viasit.com
info@viasit.com

Member of  **Rat für Formgebung**
German Design Council

