

Collection  
Fabrics

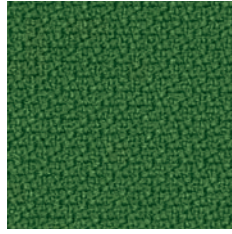
***viasit***<sup>®</sup>



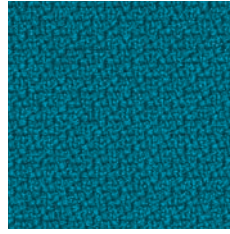




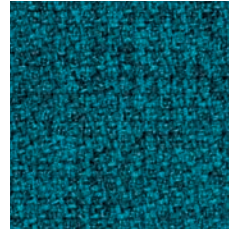
G3-5313  
Step Melange



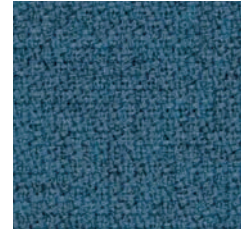
G3-5304  
Step



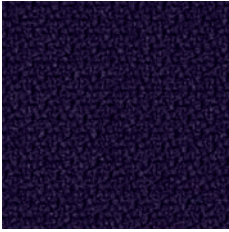
G3-5301  
Step



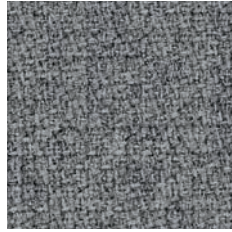
G3-5311  
Step Melange



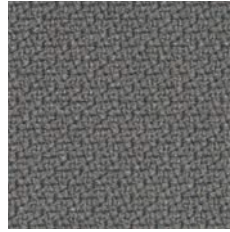
G3-5310  
Step Melange



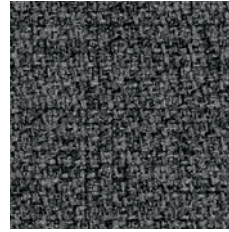
G3-5302  
Step



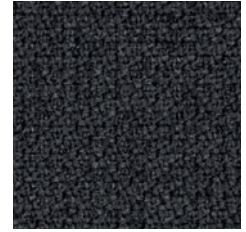
G3-5316  
Step Melange



G3-5305  
Step



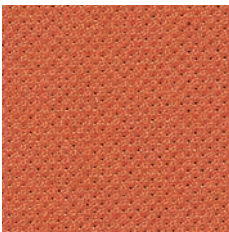
G3-5315  
Step Melange



G3-5314  
Step Melange



G3-5300  
Step



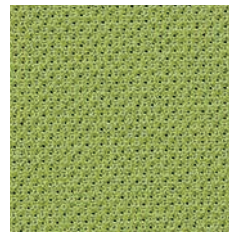
G2-1041  
Atlantic



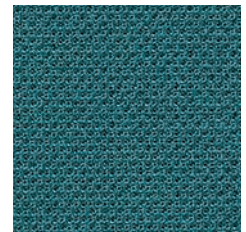
G2-1047  
Atlantic



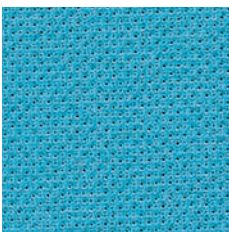
G2-1053  
Atlantic



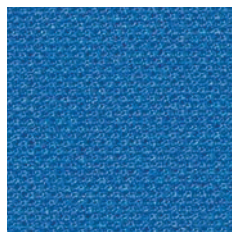
G2-1050  
Atlantic



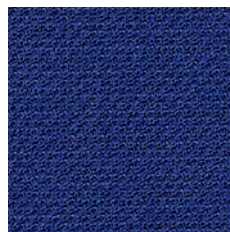
G2-1060  
Atlantic



G2-1058  
Atlantic



G2-1059  
Atlantic



G2-1042  
Atlantic



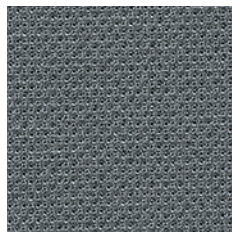
G2-1049  
Atlantic



G2-1045  
Atlantic



G2-1057  
Atlantic



G2-1043  
Atlantic



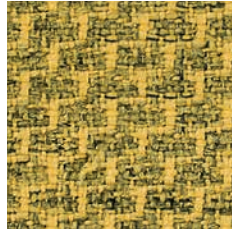
G2-1046  
Atlantic



G2-1040  
Atlantic



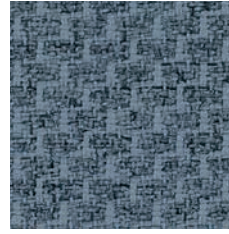
G2-1221  
Bond



G2-1225  
Bond



G2-1223  
Bond



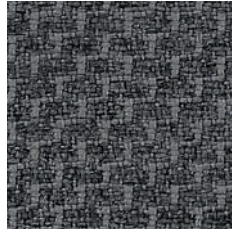
G2-1220  
Bond



G2-1222  
Bond



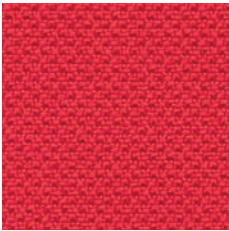
G2-1224  
Bond



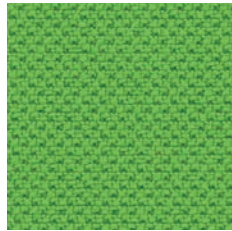
G2-1226  
Bond



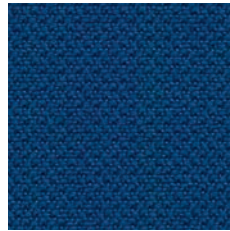
G2-1227  
Bond



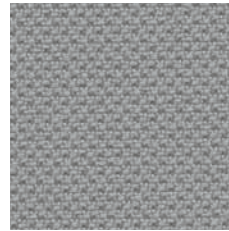
G1-1142  
Alba



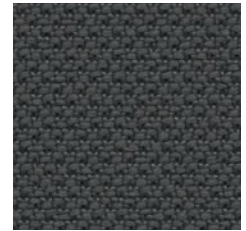
G1-1144  
Alba



G1-1143  
Alba



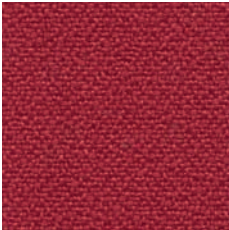
G1-1145  
Alba



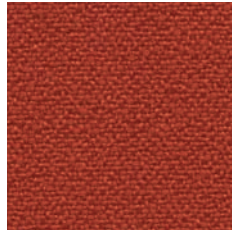
G1-1146  
Alba



G1-1147  
Alba



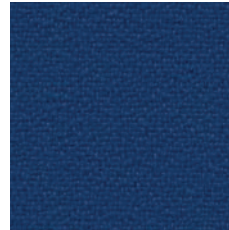
G1-1183  
Bondai



G1-1195  
Bondai



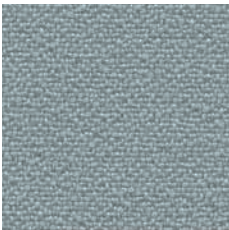
G1-1197  
Bondai



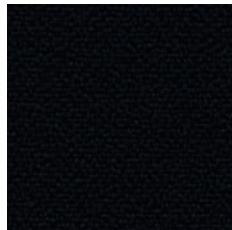
G1-1182  
Bondai



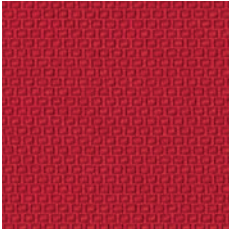
G1-1180  
Bondai



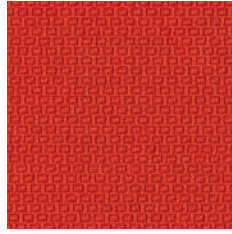
G1-1196  
Bondai



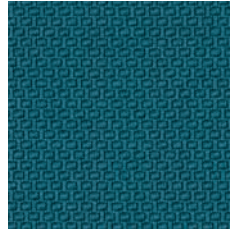
G1-1181  
Bondai



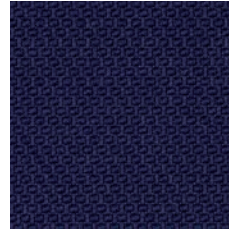
G3-5362  
Felicity



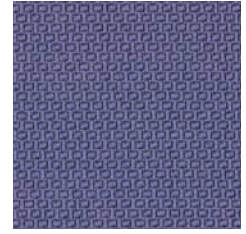
G3-5361  
Felicity



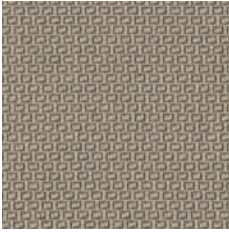
G3-5365  
Felicity



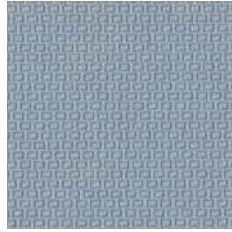
G3-5363  
Felicity



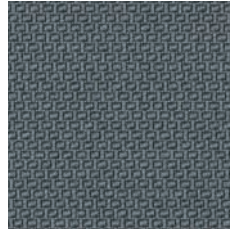
G3-5360  
Felicity



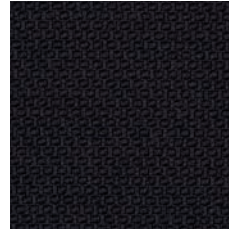
G3-5366  
Felicity



G3-5364  
Felicity



G3-5367  
Felicity



G3-5368  
Felicity



G3-1357  
Milan



G3-1356  
Milan



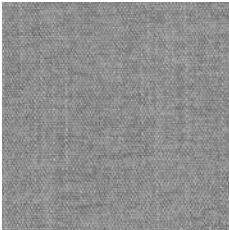
G3-1353  
Milan



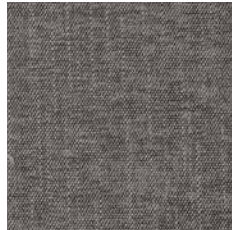
G3-1354  
Milan



G3-1355  
Milan



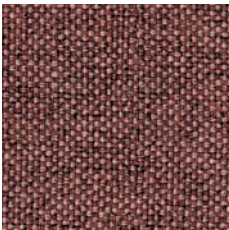
G3-1352  
Milan



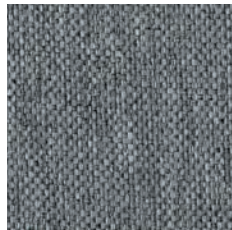
G3-1351  
Milan



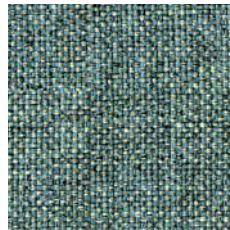
G3-1350  
Milan



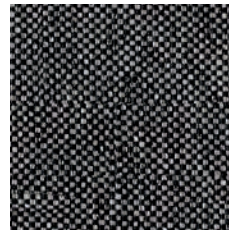
G1-1257  
Rivet



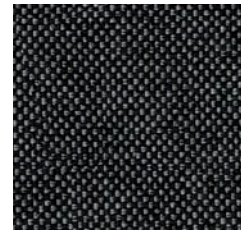
G1-1258  
Rivet



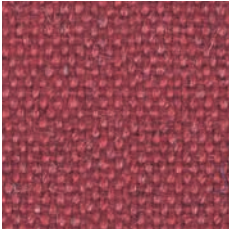
G1-1261  
Rivet



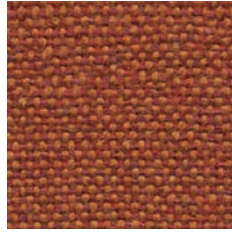
G1-1259  
Rivet



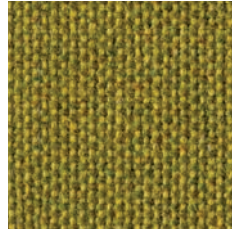
G1-1250  
Rivet



**G4-7400**  
Main Line Flax



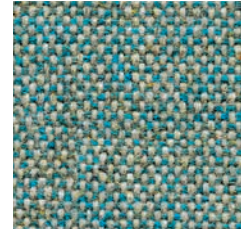
**G4-7401**  
Main Line Flax



**G4-7402**  
Main Line Flax



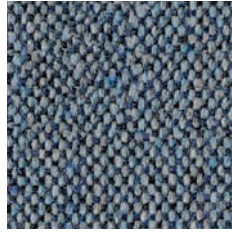
**G4-7408**  
Main Line Flax



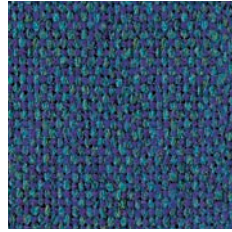
**G4-7405**  
Main Line Flax



**G4-7404**  
Main Line Flax



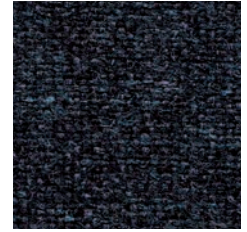
**G4-7407**  
Main Line Flax



**G4-7409**  
Main Line Flax



**G4-7406**  
Main Line Flax



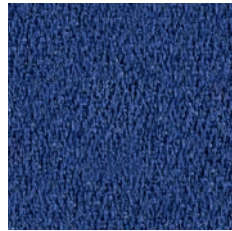
**G4-7410**  
Main Line Flax



**G4-7403**  
Main Line Flax



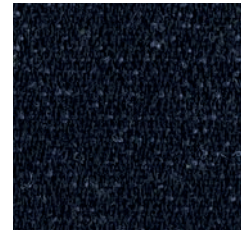
**G4-7411**  
Main Line Flax



**G4-7222**  
24/7 Flax



**G4-7221**  
24/7 Flax



**G4-7220**  
24/7 Flax



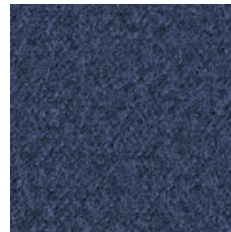
**G5-7421**  
Synergy



**G5-7420**  
Synergy



**G5-7429**  
Synergy



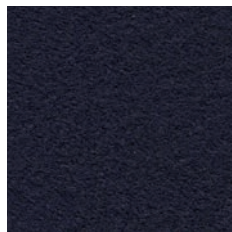
**G5-7424**  
Synergy



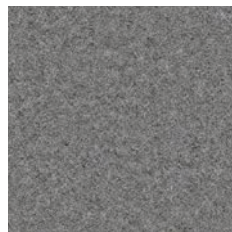
**G5-7423**  
Synergy



**G5-7426**  
Synergy



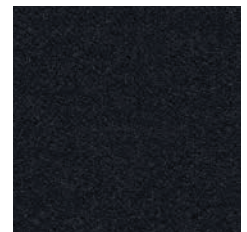
**G5-7422**  
Synergy



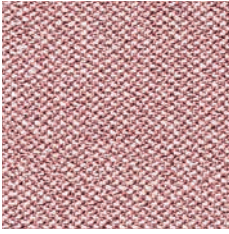
**G5-7425**  
Synergy



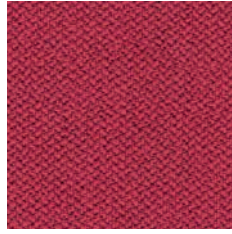
**G5-7427**  
Synergy



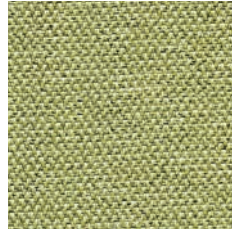
**G5-7428**  
Synergy



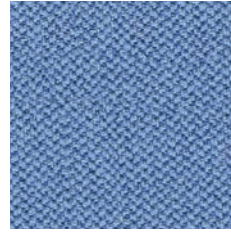
G1-1240  
Era



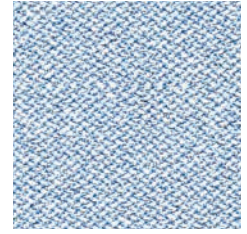
G1-1242  
Era



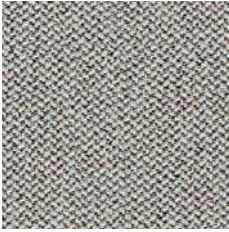
G1-1243  
Era



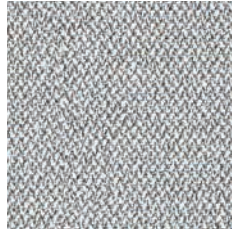
G1-1246  
Era



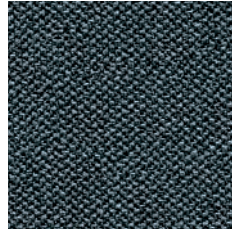
G1-1244  
Era



G1-1241  
Era



G1-1245  
Era



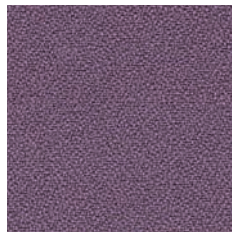
G1-1247  
Era



G1-1248  
Era



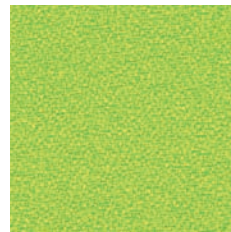
G2-1029  
Xtreme



G2-1107  
Xtreme



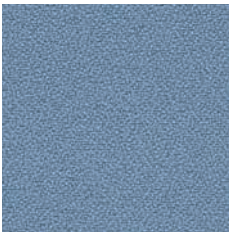
G2-1116  
Xtreme



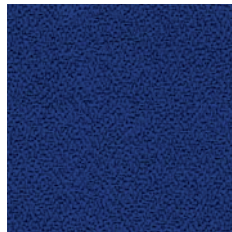
G2-1039  
Xtreme



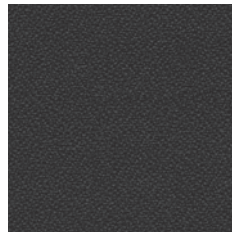
G2-1082  
Xtreme



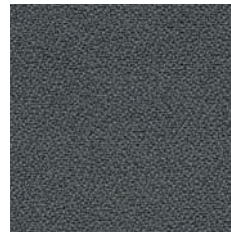
G2-1109  
Xtreme



G2-1023  
Xtreme



G2-1115  
Xtreme



G2-1021  
Xtreme



G2-1024  
Xtreme



G2-1020  
Xtreme

<b>Alba</b>	<b>G1 (Fidivi)</b>
Composition	100% polyester
Flammability	1 IM (UNI 9175) / BS 7176 / California TB 117 / CRIB 5 (BS 5852 part II) / EN 1021-1&2
Weight	450 g/lm
Width	140 cm
Pilling	5 / 5 (EN ISO 12945-2)
Light fastness	6 / 8 (EN ISO 105-B02)
Rubbing fastness	5 / 5, 4-5 / 5 (EN ISO 105x12 (wet, dry))
Abrasion	100,000 rubs Martindale (EN ISO 12947-2)
Environment	STANDARD 100 by OEKO-TEX®

<b>Atlantic</b>	<b>G2 (Gabriel)</b>
Composition	100% polyester
Flammability	CA TB 117-2013 / ASTM E 84 Class I / ÖNORM A3800-B1-B3825-Q1 UK / BS EN 1021-1 Cigarette / BS EN 1021-2 Match / DIN EN 13501-1 B-s1,d0 (glued) Will also pass other flammability standards. Flame retardant performance is dependent upon the foam used. Contains no flame retardant chemicals.
Weight	530 g/lm
Width	150 cm
Pilling	4-5 / 5 (EN ISO 12945-2)
Light fastness	5-7 / 8 (EN ISO 105-B02)
Rubbing fastness	4-5 / 5, 4-5 / 5 (EN ISO 105x12 (wet, dry))
Abrasion	110,000 rubs Martindale (EN ISO 12947-2)
Environment	STANDARD 100 by OEKO-TEX®, EU Ecolabel

<b>Bond</b>	<b>G2 (Gabriel)</b>
Composition	98% post-consumer recycled polyester, 2% polyester
Flammability	BS EN 1021 1&2 Cigarette and Match CA TB 117-2013 Will also pass other flammability standards. Flame retardant performance is dependent upon the foam used. Contains no flame retardant chemicals.
Weight	530 g/lm
Width	140 cm
Pilling	5 / 5 (EN ISO 12945-2)
Light fastness	6-7 / 8 (EN ISO 105-B02)
Rubbing fastness	4-5 / 5, 4-5 / 5 (EN ISO 105x12 (wet, dry))
Abrasion	100,000 rubs Martindale (EN ISO 12947-2)
Environment	STANDARD 100 by OEKO-TEX®, EU Ecolabel

<b>Bondai</b>	<b>G1 (Fidivi)</b>
Composition	100% polyester
Flammability	1 IM (UNI 9175) / BS 7176 / California TB 117 / CRIB 5 (BS 5852 part II) / EN 1021-1&2 / Euroclass EN 13501-1
Weight	350 g/lm
Width	140 cm
Pilling	5 / 5 (EN ISO 12945-2)
Light fastness	6 / 8 (EN ISO 105-B02)
Rubbing fastness	5 / 5, 5 / 5 (EN ISO 105x12 (wet, dry))
Abrasion	150,000 rubs Martindale (EN ISO 12947-2)
Environment	STANDARD 100 by OEKO-TEX®

<b>Era</b>	<b>G1 (Camira)</b>
Composition	100% polyester, non metallic dyestuffs
Flammability	EN 1021 – 1&2 (cigarette & match) / BS 7176 Low Hazard EN 13501-1 Adhered Class B, s1, d0 / EN 13501-1 Un-adhered Class C, s1, d0 / BS 5852 Ignition Source 5 with EnviroFlam5 / BS 7176 Medium Hazard with EnviroFlam5 / The Furniture & Furnishing (Fire Safety) Regulations 1988 (UK domestic cig & match) with EnviroFlam5
Weight	320 g/lm
Width	140 cm
Light fastness	5 / 8 (EN ISO 105-B02)
Rubbing fastness	4 / 5, 4 / 5 (EN ISO 105x12 (wet, dry))
Abrasion	≥ 100,000 rubs Martindale (EN ISO 12947-2)
Environment	STANDARD 100 by OEKO-TEX®, Indoor Advantage Gold

<b>Felicity</b>	<b>G3 (Gabriel)</b>
Composition	100% post-consumer recycled polyester
Flammability	BS EN 1021 1&2 Cigarette and Match BS EN 1021-1 Cigarette CA TB 117-2013 Will also pass other flammability standards. Flame retardant performance is dependent upon the foam used. Contains no flame retardant chemicals.
Weight	430 g/lm
Width	140 cm
Pilling	5 / 5 (EN ISO 12945-2)
Light fastness	5-7 / 8 (EN ISO 105-B02)
Rubbing fastness	4-5 / 5, 4-5 / 5 (EN ISO 105x12 (wet, dry))
Abrasion	90,000 rubs Martindale (EN ISO 12947-2)
Environment	STANDARD 100 by OEKO-TEX®, EU Ecolabel, Cradle to Cradle Certified® Bronze

<b>Main Line Flax</b>	<b>G4 (Camira)</b>
Composition	75% virgin wool (Schurwolle), 25% flax
Flammability	EN 1021 – 1&2 (cigarette & match) / BS 7176 Low Hazard BS 5852 Ignition Source 5 / BS 7176 Medium Hazard / NF D 60-013 / ÖNORM B 3825 & A 3800-1 (58kg/m3 CMHR Foam) / UNI 9175 Classe 1 IM / BS 5867-2: Type B Curtains & Drapes / IMO FTP Code (Part 8) The Furniture and Furnishing (Fire) (Safety) Regulations 1988 (Domestic Cigarette and Match)
Weight	437 g/lm
Width	140 cm
Light fastness	5 / 8 (EN ISO 105-B02)
Rubbing fastness	3 / 5, 4 / 5 (EN ISO 105x12 (wet, dry))
Abrasion	≥ 50,000 rubs Martindale (EN ISO 12947-2)
Environment	STANDARD 100 by OEKO-TEX®, Indoor Advantage Gold

<b>Milan</b>	<b>G3 (Eurotex)</b>
Composition	100% polyester
Weight	675 g/lm
Width	145 cm
Light fastness	4,5 / 8 (EN ISO 105-B02)
Rubbing fastness	4 / 5, 4-5 / 5 (EN ISO 105x12 (wet, dry))
Abrasion	≥ 80,000 rubs Martindale (EN ISO 12947-2)
Environment	STANDARD 100 by OEKO-TEX®



<b>Rivet</b>	<b>G1 (Camira)</b>
Composition	100% post-consumer recycled polyester
Flammability	EN 1021 - 1&2 (cigarette & match) / BS 7176 Low Hazard UNI 9175 Classe 1 IM / BS 5852 Ignition Source 5 with EnviroFlam5 / BS 7176 Medium Hazard with EnviroFlam5 / The Furniture & Furnishing (Fire Safety) Regulations 1988 (UK domestic cig & match) with EnviroFlam5
Weight	280 g/lm
Width	140 cm
Light fastness	5-6 / 8 (EN ISO 105-B02)
Rubbing fastness	4 / 5, 4 / 5 (EN ISO 105x12 (wet, dry))
Abrasion	≥ 80.000 rubs Martindale (EN ISO 12947-2)
Environment	EU Ecolabel, Indoor Advantage Gold

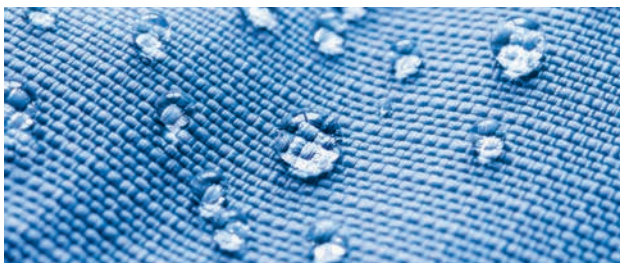
<b>Step</b>	<b>G3 (Gabriel)</b>
Composition	100% Trevira CS
Flammability	BS EN 1021 1&2 Cigarette and Match / BS EN 1021-1 Cigarette / BS 5852 Crib 5 / BS 7176 Medium hazard / DIN 4102 - B1 / NFP 92-503/504/505 M1 / AM 18 - NF D 60-013-(only for fabric) / ÖNORM A3800-B1-B3825-Q1 UK / FAR/JAR 25.853 (a) (i) (ii) / DIN EN 13501-1 B-s1,d0 / Class Uno UNI 9175 Class 1 I EMME / CA TB 117-2013 / IMO MSC 307(88) Annex 1 part 8 / MED Certificate IMO / IMO MSC 307(88) Annex 1 part 8 UK / MED Certificate IMO UK Will also pass other flammability standards. Flame retardant performance is dependent upon the foam used.
Weight	470 g/lm
Width	140 cm
Light fastness	5-7 / 8 (EN ISO 105-B02)
Rubbing fastness	4-5 / 5, 4-5 / 5 (EN ISO 105x12 (wet, dry))
Abrasion	100,000 rubs Martindale (EN ISO 12947-2)
Environment	STANDARD 100 by OEKO-TEX®, EU Ecolabel

<b>Step Melange</b>	<b>G3 (Gabriel)</b>
Composition	100% Trevira CS
Flammability	DIN 4102 - B1 / NFP 92-503/504/505 M1 / BS EN 1021 1&2 Cigarette and Match / BS EN 1021-1 Cigarette / BS 5852 Crib 5 / ÖNORM A3800-B1-B3825-Q1 UK / FAR/JAR 25.853 (a) (i) (ii) / AM 18 - NF D 60-013-(only for fabric) / CA TB 117-2013 / Class Uno UNI 9175 Class 1 I EMME / DIN EN 13501-1 B-s1,d0 / IMO MSC 307(88) Annex 1 part 8 / MED Certificate IMO / IMO MSC 307(88) Annex 1 part 8 UK / MED Certificate IMO UK Will also pass other flammability standards. Flame retardant performance is dependent upon the foam used.
Weight	470 g/lm
Width	140 cm
Light fastness	5-7 / 8 (EN ISO 105-B02)
Rubbing fastness	4-5 / 5, 4-5 / 5 (EN ISO 105x12 (wet, dry))
Abrasion	100,000 rubs Martindale (EN ISO 12947-2)
Environment	STANDARD 100 by OEKO-TEX®, EU Ecolabel

<b>Synergy</b>	<b>G5 (Camira)</b>
Composition	95% virgin wool (Schurwolle), 5% polyamide
Flammability	EN 1021 - 1&2 (cigarette & match) / BS 7176 Low Hazard NF D 60-013 / ÖNORM B 3825 & A 3800-1 (58 kg/m3 CMHR Foam) / UNI 9175 Classe 1 IM / EN 13501-1 Adhered Class D, s1, d0 / IMO FTP Code (Part 8) / The Furniture and Furnishing (Fire) (Safety) Regulations 1988 (Domestic Cigarette and Match) / BS 5852 Ignition Source 5 when FR treated / BS 7176 Medium Hazard when FR treated / EN 13501-1 Adhered Class B, s1, d0 when FR treated / EN 13501-1 Un-adhered Class D, s2, d0 when FR treated
Weight	400 g/lm
Width	140 cm
Light fastness	5 / 8 (EN ISO 105-B02)
Rubbing fastness	4 / 5, 4 / 5 (EN ISO 105x12 (wet, dry))
Abrasion	≥ 100,000 rubs Martindale (EN ISO 12947-2)
Environment	EU Ecolabel, Indoor Advantage Gold

<b>Xtreme</b>	<b>G2 (Camira)</b>
Composition	100% post-consumer recycled polyester
Flammability	EN 1021 - 1&2 (cigarette & match) / BS 7176 Low Hazard BS 5852 Ignition Source 5 / BS 7176 Medium Hazard DIN 4102 B1 / NF D 60-013 ÖNORM B 3825 & A 3800-1 (over 58 kg/m3 CMHR foam) / UNI 9175 Classe 1 IM / BS 476 Part 7 Class 1 (Adhered) Flame retardant performance is dependent upon the foam used.
Weight	310 g/lm
Width	140 cm
Light fastness	6 / 8 (EN ISO 105-B02)
Rubbing fastness	4 / 5, 4 / 5 (EN ISO 105x12 (wet, dry))
Abrasion	≥ 100,000 rubs Martindale (EN ISO 12947-2)
Environment	STANDARD 100 by OEKO-TEX®, EU Ecolabel, Indoor Advantage Gold

<b>24/7 Flax</b>	<b>G4 (Camira)</b>
Composition	54% polyamide, 35% virgin wool (Schurwolle), 11% flax
Flammability	EN 1021 - 1 (Cigarette), EN 1021 - 2 (Match), BS 7176 Low Hazard BS 5852 Ignition Source 5, BS 7176 Medium Hazard, NF D 60-013, UNI 9175 Classe 1 IM, IMO FTP Code (Part 8) Flame retardant performance is dependent upon the foam used.
Weight	390 g/lm
Width	140 cm
Light fastness	5 / 8 (EN ISO 105-B02)
Rubbing fastness	4 / 5, 4 / 5 (EN ISO 105x12 (wet, dry))
Abrasion	≥ 200,000 rubs Martindale (EN ISO 12947-2)



All upholstery materials in our collection can be treated with Nano protection.



**Viasit Bürositzmöbel GmbH**  
**Boxbergweg 4**  
**D-66538 Neunkirchen**

**Viasit International Ltd.**  
**104 – 110 Goswell Road**  
**London EC1V 7DH**  
**United Kingdom**

**www.viasit.com**  
**info@viasit.com**

Member of  **Rat für Formgebung**  
German Design Council

