

Z7 Treadmill Assembly Guide



Assembly Guide

Z7 Treadmill



01



02



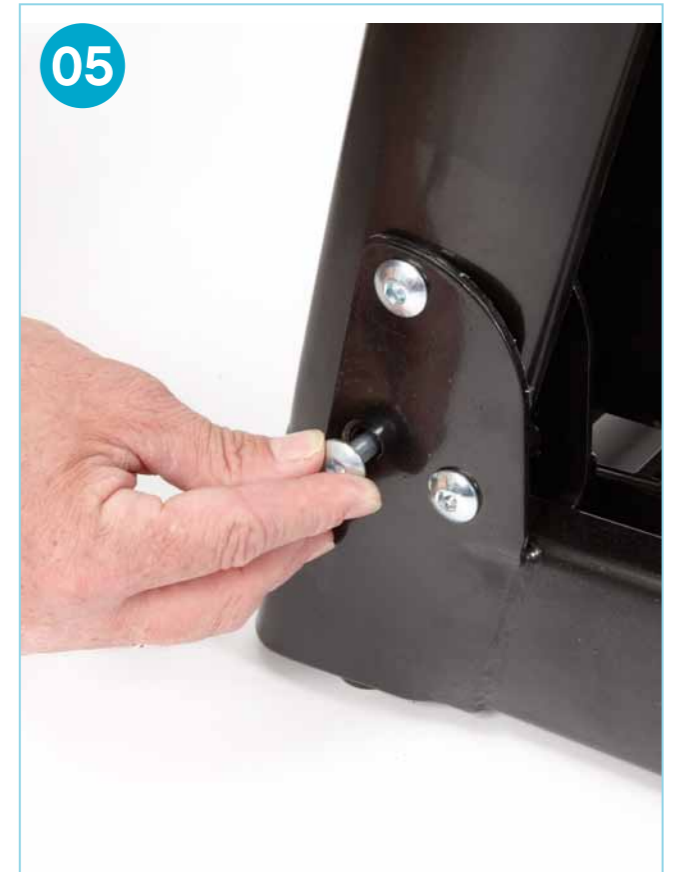
03



04



05



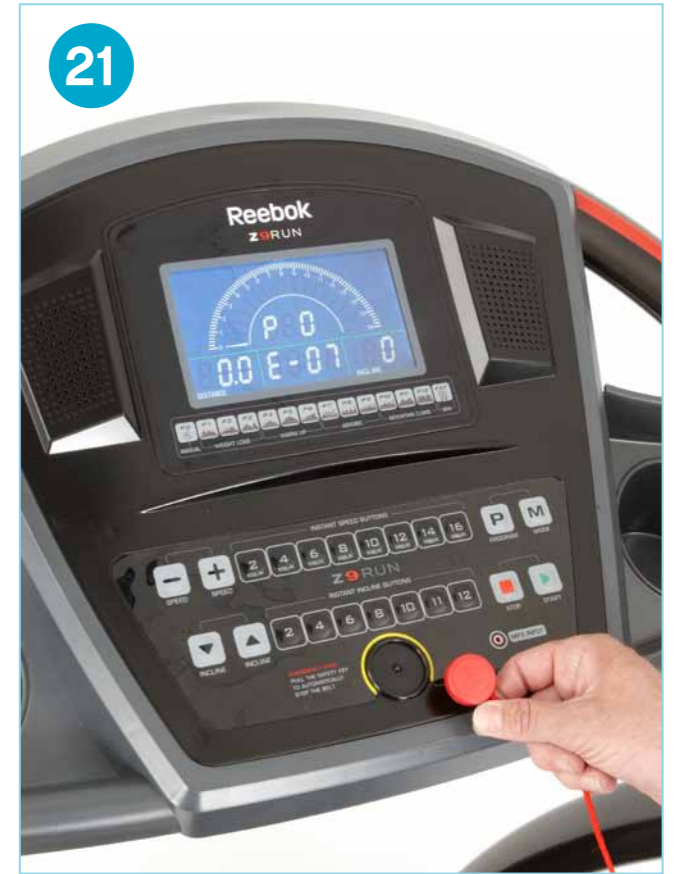
06

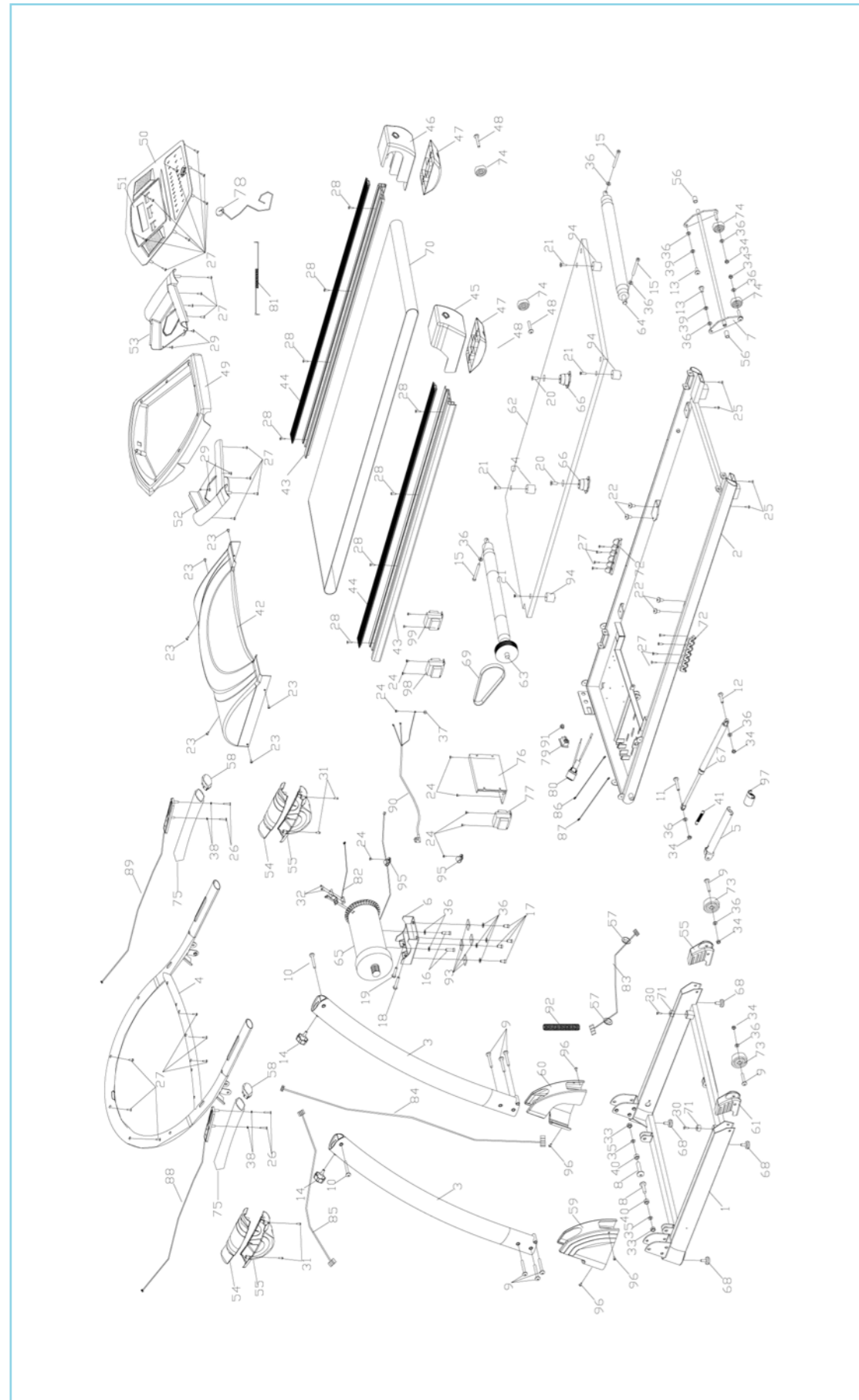


07









Part	Name	QTY	Part	Name	QTY
1	Base frame welding	1	49	Computer cover	1
2	Main frame welding	1	50	Place with the computer (big)	1
3	Upright post welding	1	51	Place with the computer (small)	1
4	Handle bar welding	1	52	Sundries frame (left)	1
5	Feet pad welding	1	53	Sundries frame (right)	1
6	Motor board welding	1	54	Handle bar cover (up)	1
7	Incline frame welding	1	55	Handle bar cover (down)	1
8	Inner hex bolt M10*35*20	2	56	Ellipse round stuff	2
9	Inner hex bolt M8*50*20	8	57	Protect wire ring	2
10	Inner hex bolt M8*45*20	2	58	Ellipse round stuff	2
11	Inner hex bolt M8*40*20	1	59	Base frame cover (left)	1
12	Inner hex bolt M8*30*20	1	60	Base frame cover (right)	1
13	Inner hex bolt M8*20	2	61	Uncork stuff	2
14	Hexagon knob 45*45*M8*20	2	62	Running board	1
15	Inner hex bolt M8*75	3	63	Front roller	1
16	Inner hex bolt M8*30	2	64	Rear roller	1
17	Inner hex bolt M8*15	4	65	Motor	1
18	Outside hex bolt M8*50	1	66	Cushion with seat	2
19	Outside hex bolt M8*40	1	67	Cylinder	1
20	Cross bolt M8*25	2	68	Taper feet pad	4
21	Cross bolt M6*25	4	69	Motor belt	1
22	Cross bolt M6*8	4	70	Running belt	1
23	Cross bolt M5*10	6	71	Rear cover feet pad	2
24	Cross bolt M4*10	8	72	Decorate piece	4
25	Cross bolt ST5*15	4	73	Wheel 62	2
26	Cross bolt ST4*30	4	74	Wheel 46	2
27	Cross bolt ST4*15	34	75	Foam	2
28	Cross bolt ST4*15	10	76	Controller	1
29	Cross bolt ST4*10	8	77	Transformer	1
30	Cross bolt ST5*15	2	78	Safety key	1
31	Cross bolt ST4*15	4	79	Switch	1
32	Cross bolt ST3*08	2	80	Fuse seat with wire	1
33	Hex nut M10	2	81	MP3 connect wire	1
34	Hex nut M8	6	82	Inductor	1
35	Flat washer 10	2	83	Wire L1	1
36	Flat washer 8	17	84	Wire L2	1
37	Washer 5	1	85	Wire L3	1
38	Flat washer 4	4	86	Power supply connect wire (red)	1
39	Washer 8	2	87	Power supply connect wire (black)	1
40	Power metallurgy cover 17* 10*12	2	88	Speed wire and handle pulse wire set	1
41	Spring	1	89	Start and stop and handle pulse wire set	1
42	Motor cover(up)	1	90	Power supply wire	1
43	Side rail	2	91	Wire buckle	1
44	Decorate piece	2	92	Wire protect cover	1
45	Rear cover (left)	1	93	Square cushion	2
46	Rear cover (right)	1	94	Column cushion	2
47	Rear cover feet pad	2	95	Wire nip	1
48	Square stuff	2	96	Cross screw ST4x20	4