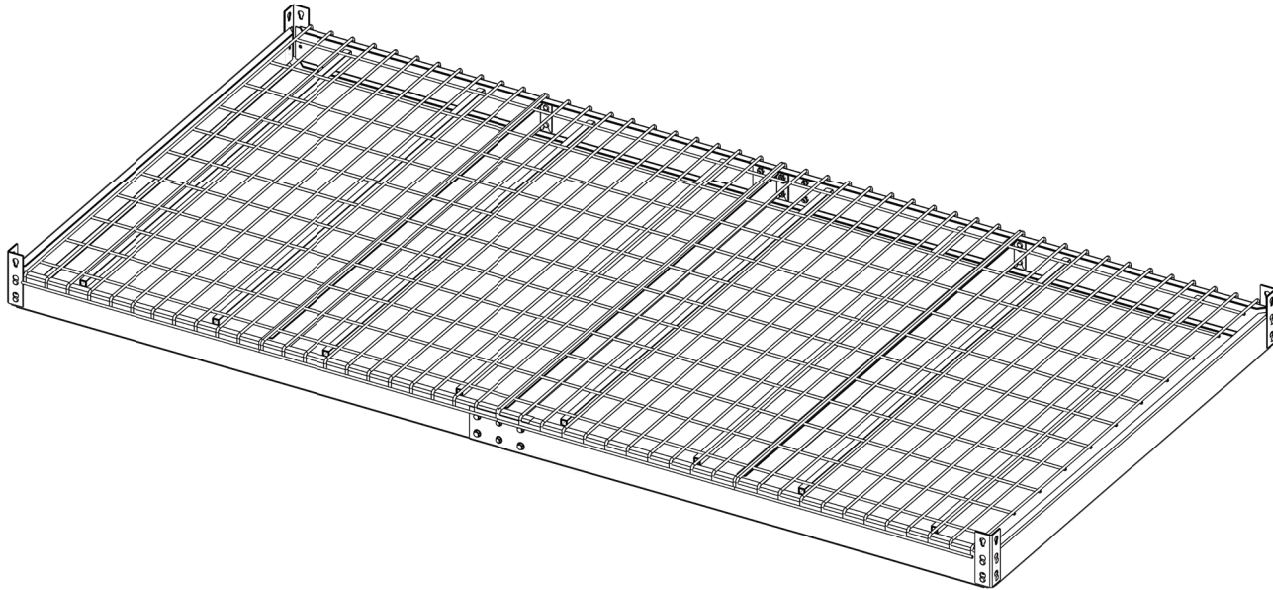


Platform Storage Lifter

4'x4', 4'x6' and 4'x8'



Safety Overview	2
MyLifter Safety	3
What's in the Box	4
Platform Installation	5
Step 1: Assemble Platform Overhead Storage Rack	5
Step 2: Install Smart Track	9
Step 3: Install MyLifter Hoists	13
Step 4: Install Power Adapters and Cable Management Clips.....	16
Step 5: Attach Platform To MyLifters.....	19

1. This is a **DO IT YOURSELF** project. Read and follow the installation instructions carefully. Failure to follow instructions could result in property damage, serious injury or death. If you have any questions or concerns about the quality of your ceiling structure discontinue installation and consult a structural engineer.
2. Do not attempt to install any SmarterHome product or device without a basic understanding of these installation instructions. If you are not confident locating and anchoring items to ceiling joists do not attempt this installation.
3. Do not exceed the stated weight limits noted on the platform overhead storage rack. Deflection of the storage rack can happen as it reaches maximum weight load. The weight limit is based on a statically loaded storage rack that is anchored to a wood framed garage. This system is not compatible if your house is constructed using metal studs.
4. Load the overhead storage rack evenly being sure to place heavier objects closer to the vertical uprights and the lighter objects closer to the center.
5. Routinely inspect the storage rack to ensure rivets and wire decking are properly seated.

WEIGHT CAPACITY			
PLATFORM SIZE	MOTORIZED		NON-MOTORIZED
4' x 4'	160 lbs (2 MyLifters)	360 lbs (4 MyLifters)	400 lbs
4' x 6'	340 lbs (4 MyLifters)		500 lbs
4' x 8'	320 lbs (4 MyLifters)		600 lbs

When using the MyLifter and related storage accessories:

- **Do NOT** use the MyLifter to lift people or animals.
- **Do NOT** climb or hang on the storage rack.
- **Do NOT** lift items while hands or other body parts are near the MyLifter device, lifting cables, storage accessories, etc.
- **Do NOT** stand under the MyLifter or any items that have been lifted by the MyLifter.
- **Do NOT** use the MyLifter to lift or lower items over people or animals.
- **Do NOT** exceed the lifting capacity of the MyLifters.
- **Do NOT** attempt to install/secure lifters to angled ceilings or walls. MyLifter units are designed to be secured to flat ceilings only.
- **Do NOT** install in any manner other than as specified in instructions.
- **Do NOT** attempt to lift unbalanced loads. Always balance items/loads before lifting.

**Inspect the MyLifter Cable(s)**

- Inspect the MyLifter cable(s) often/before each use to ensure it is properly seated on the pulley wheel. If the cable is tangled, damaged, or bent, stop using your MyLifter device immediately.

Avoid Electric Shock

- To avoid risk of electric shock and/or other potential injury **DO NOT** disassemble or open any SmarterHome device. All SmarterHome products are designed for indoor use only. Failure to follow these safety instructions could result in property damage, serious personal injury, or death.



Riveted Side Rails x0 (4'x4'), x2 (4'x6' & 4'x8')



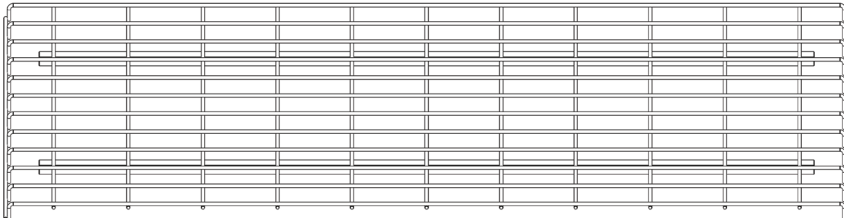
Riveted End Rails x2 (4'x4', 4'x6' & 4'x8')



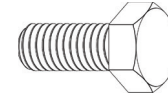
Center Supports x1 (4'x4'), x2 (4'x6'), x3 (4'x8')



Vertical Upright (3-Hole) x4 (4'x4', 4'x6' & 4'x8')



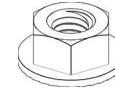
Wire Decking x2 (4'x4'), x3 (4'x6'), x4 (4'x8')



M6 x 15mm Bolt
x0 (4'x4')
x12 (4'x6' & 4'x8')



M6 Washer
x0 (4'x4')
x12 (4'x6' & 4'x8')



M6 Flange Nut
x0 (4'x4')
x12 (4'x6' & 4'x8')



Plastic Plug
x8 (4'x4', 4'x6' & 4'x8')

Required Tools (not included)

- Drill
- Ratchet with 1/2" and 10mm Socket
- Stud Finder
- Ladder
- 10mm Wrench
- Rubber Mallet
- Safety Glasses
- Pencil
- Tape Measure
- Screwdriver (flat blade)



MyLifters
x4 (4'x4', 4'x6' & 4'x8')



Power Adapters
x4 (4'x4', 4'x6' & 4'x8')



Smart Track & Hardware
x4 (4'x4', 4'x6' & 4'x8')

**NOTE**

NOTE: These instructions depict the installation of a 4'x8' rack. Other racks sizes can be installed referencing these instructions, but using measurements that match the platform size you are installing. If you have questions, please contact our Customer Support Team.

Step 1: Assemble Platform Overhead Storage Rack

NOTE: If assembling a 4'x4' platform, skip to step 4 on page 6.

1. Align the holes on two of the riveted side rails. **NOTE:** All four side rails are identical so no need to worry about using the wrong ones.
2. Using the 10mm socket and wrench plus 4 bolts, 4 washers and 4 nuts, fasten the two riveted side rails together using the outer holes only, as shown. Place the washer on the bolt before inserting it into the hole on the side rail. (fig 1.1). **NOTE:** The center holes will be used to attach the center support later in the assembly process.
3. Repeat steps 1 and 2 for the remaining side rails. When finished with this step, you should have two assembled side rails.

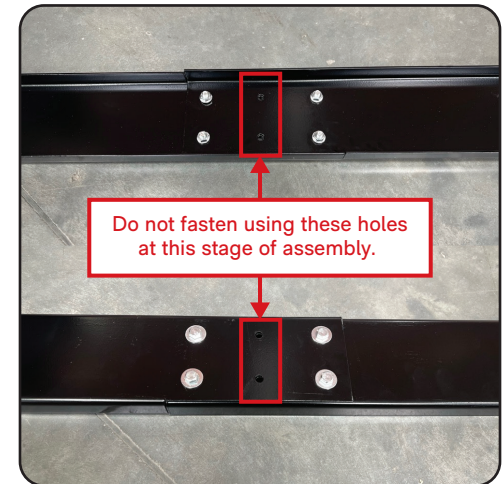


fig 1.1

Step 1: Assemble Platform Overhead Storage Rack (cont.)

4. Join a side rail with an end rail using a vertical upright post. We suggest using a rubber mallet and screwdriver (fig 1.2) to ensure the rivets are properly seated.



NOTE: Orientation of vertical upright post should position the narrow side of the keyhole slot towards the floor as shown.

5. Once the rivets are fully seated, insert a plastic plug as shown. (fig 1.3)
6. Repeat steps 4 and 5 for each of the four corners so all side and end rails are fastened together.



fig 1.2

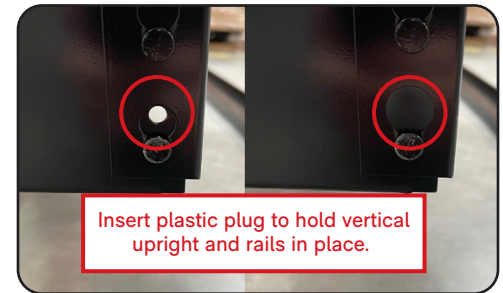


fig 1.3



NOTE

NOTE: Opposite ends of the side rails may come loose while hammering other side rails into place. Be sure to check that all rivets are properly seated once you have attached all side and end rails.

**Step 1: Assemble Platform
Overhead Storage Rack (cont.)**

7. Fasten the center support to the side rails as shown using the remaining bolts, nuts and washers. **NOTE:** Insert the center support into place before tightening the bolts. The 4'x4' platform center support does not require bolts/nuts. Please refer to next step to properly attach the center support for the 4'x4' platform. (fig 1.4)
8. Attach the remaining center supports to the side rails by inserting the rivets into the keyhole openings. Make sure the rivets are fully seated. (fig 1.5)



fig 1.4

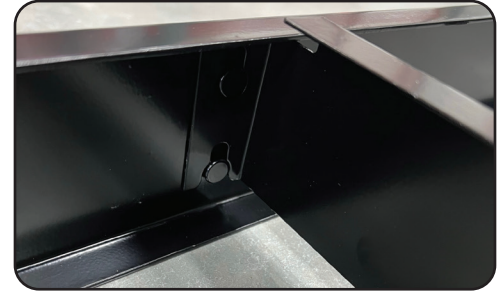


fig 1.5

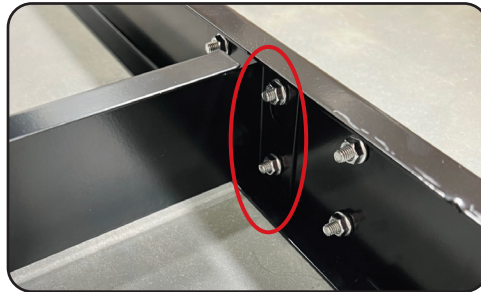


fig 1.4



fig 1.5

Step 1: Assemble Platform Overhead Storage Rack (cont.)

9. The frame of the platform is now fully assembled (fig 1.6) and ready to add the wire decking.
10. Place the wire decking on the platform frame. The edge of each section of the wire decking (except the outer edges) should rest on a center support. (fig 1.7)



fig 1.6



fig 1.7

Edge of wire decking resting on center supports.



Step 2: Install Smart Track

- Lag bolts used to secure Smart Track must be centered in ceiling joists.
- If you are not confident locating and anchoring items to ceiling joists do not attempt this installation.
- Smart Track is designed to be installed with two lag bolts. Load must only be applied between lag bolts.
- Smart Track is designed to be secured to flat garage ceilings. DO NOT mount the Smart Track to walls or angled ceilings. Failure to follow instructions could result in property damage, serious injury, or death.
- If you have any questions or concerns about the quality of your ceiling structure discontinue installation and consult a structural engineer.

Step 2: Install Smart Track (cont.)

1. Determine where to install your platform overhead storage rack. Be sure to take into consideration garage doors, overhead lights etc. when choosing your install location. Keep in mind you'll also need access to at least one power outlet to power the MyLifters.
2. Determine where each Smart Track will need to be installed. (fig 2.1)
3. Use a stud finder to find the ceiling joist that is nearest to your desired installation location.
4. Mark the left edge of the joist. (fig 2.2)
5. Mark the right edge of the joist. (fig 2.3)
6. Mark the center of the joist. (fig 2.4)

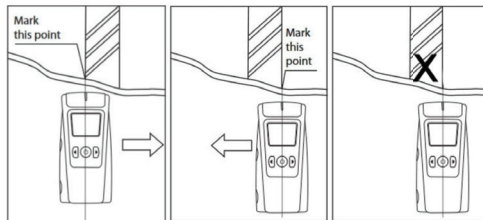


fig 2.2

fig 2.3

fig 2.4

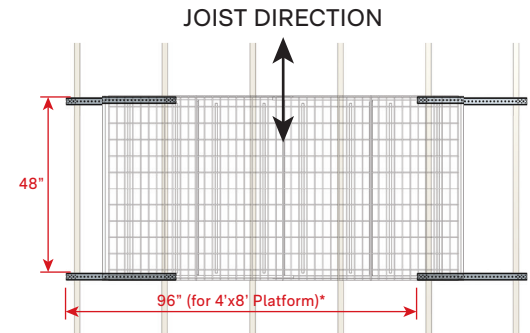
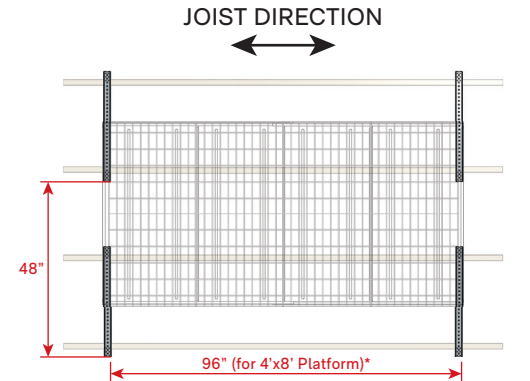
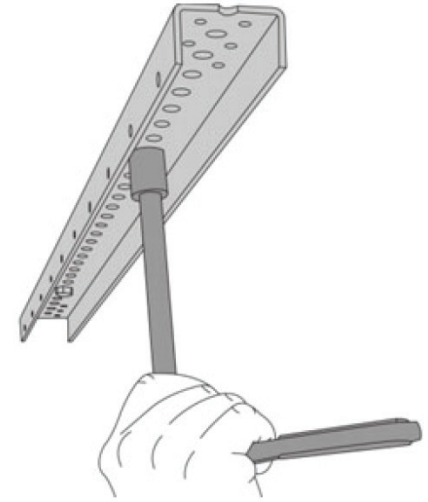


fig 2.1

*NOTE: When installing a 4'x4' or 4'x6' platform, be sure to use the appropriate length measurements for the platform size you are installing (48" for 4'x4' platform and 72" for 4'x6' platform). If you have questions, please contact our Customer Support Team.

Step 2: Install Smart Track (cont.)

7. Place the Smart Track over the center mark you made for the ceiling joist and use a pencil to mark where the lag bolts will be installed so you can drill the pilot holes. Be sure the markings are along the center of the ceiling joist.
8. Using the included 6mm drill bit, drill the first vertical pilot hole at least three inches into the center point of the mark you made.
9. Use a ratchet with a 1/2 inch socket to attach the Smart Track to the ceiling using one of the included lag bolts and washers. Do not completely tighten the lag bolt at this point. **NOTE:** If the lag bolt turns freely, your pilot hole is likely not hitting the ceiling joist. If this is the case, find the center of the stud and drill a new pilot hole.

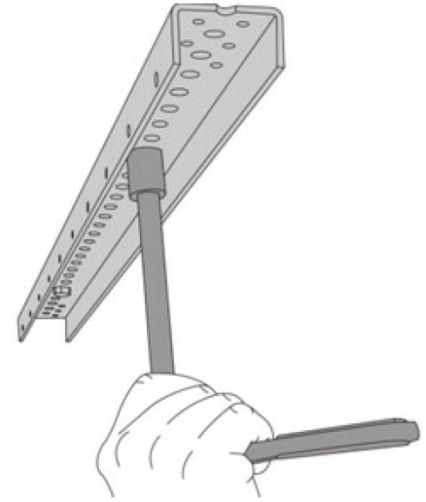


CAUTION

Do NOT use an impact driver to insert the lag bolts into the stud. This could over tighten the screws causing them to fail, which may result in property damage, serious personal injury, or death.

Step 2: Install Smart Track (cont.)

11. Repeat steps 4-6 to find the center of the joist where you will secure the other end of the Smart Track.
12. Tighten both lag bolts so the Smart Track is flush and secure against the ceiling.
13. Repeat steps 2-12 for each remaining Smart Track that needs to be installed.



CAUTION

Before moving to next step be sure that lag bolts for all Smart Track is tightened, flush and secure against the ceiling.

Step 3: Install MyLifter Hoists

1. Before installing the MyLifters onto Smart Track pair to each MyLifter. This is important to ensure you can troubleshoot any potential connection/pairing issues before installing them.
2. Download the MyLifter app from the App Store or Google Play (fig 3.1).
3. Open the app and tap “Add Devices” in the bottom right corner to open the “Available Lifters” screen.
4. Firmly press the Pair button next to the Status light on the MyLifter. (fig 3.2)
5. When the Status light blinks green, the MyLifter is paired with the app. On the “Available Lifters” screen, your newly paired MyLifter should be displayed with its corresponding MAC address as the default name. You can edit the MyLifter name by tapping “Edit” in the upper right corner. (fig 3.3)
6. Repeat steps 3-5 for all MyLifters that need to be paired.
7. Now Group all the MyLifters (up to 4 units) you’ll be using to lift the platform. This ensures the MyLifters function together.



fig 3.1

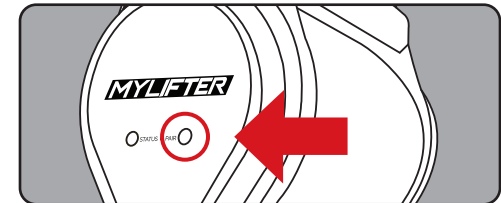


fig 3.2

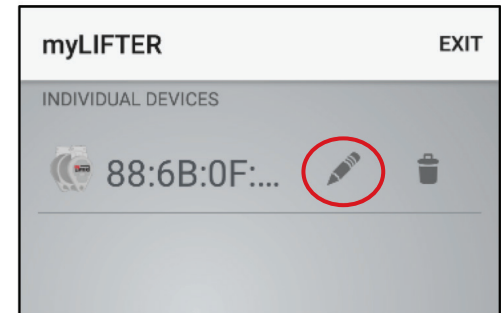


fig 3.3

Step 3: Install MyLifter Hoists (cont.)

8. On the home page, click “Create Group” in the bottom left corner. Choose “Locked Group”.
9. On the “Select Devices” screen, select the MyLifters you just paired to/want to include in the group and give the group a name, such as 'Garage Platform' in the "Name the Group" section. (fig 3.4 and 3.5)
10. Tap “Create Group” at the bottom of the screen and then “Got It” when the please confirm dialog box opens. The “Device Control” screen will open.
11. To level each MyLifter in the group, click each MyLifter one-by-one (they’re listed at the bottom of the “Device Control” screen) and adjust the cable length so each cable is the same length/distance from the floor. **NOTE:** You may have to make additional adjustments once you’ve attached the platform.
12. Once you’ve leveled each MyLifter, tap “Set Group Level”.



fig 3.4

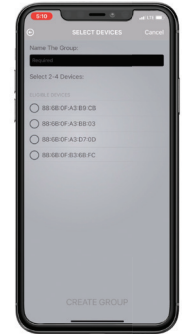


fig 3.5



NOTE

To make further adjust and ensure your item is level, tap the “Help” button and select “Level Group”. Then tap on the MyLifter you’d like to adjust and make the necessary adjustments.

Step 3: Install MyLifter Hoists (cont.)

13. Now that you've paired to each MyLifter and created a group, the MyLifters can be installed on the Smart Track.
14. Each MyLifter must be placed on Smart Track between two lag bolts to ensure proper support.
15. Placement of the MyLifters should be based on/match the dimensions of the platform being installed. For example, if installing the 4'x8' platform the MyLifters should be placed 8 feet apart on the sides and 4 feet apart on the ends. (fig 3.6)
16. To install MyLifter on Smart Track, align the holes in the MyLifter frame with the holes on the Smart Track. **NOTE: All MyLifters should be installed with the DC power input end of the MyLifter facing in the same direction. This is imperative to ensure proper operation of the MyLifter(s).**
17. Insert the two included quick-release pins through the holes in the MyLifter frame and the Smart Track. Make sure the pins go all the way through both sides of the MyLifter frame and Smart Track. Repeat this for each MyLifter that you are installing. (fig 3.7)

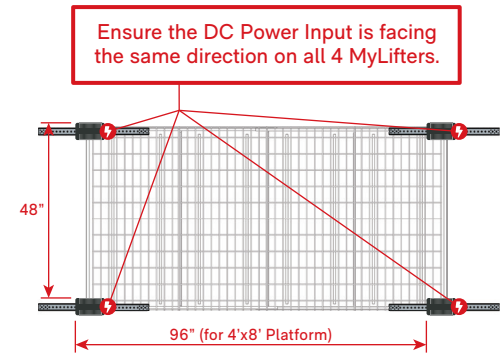


fig 3.6

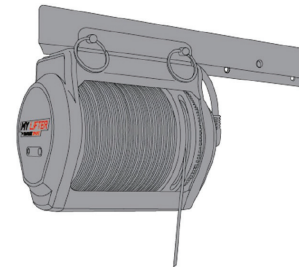


fig 3.7



NOTE

NOTE: Each MyLifter must be installed between two lag bolts and in the same orientation.

Step 4: Install Power Adapters and Cable Management Clips

1. For each MyLifter you've installed on the Smart Track, determine where the Power Adapter should be installed. The preferred location, if possible, is adjacent to the MyLifter.
2. Confirm the power cord will reach a power outlet and the DC cable will reach your MyLifter. Remember each Power Adapter is equipped with our patented power passthrough technology so you can power multiple MyLifters from one power outlet.
3. Clip the universal mounting bracket, included with the Power Adapter, onto the Smart Track. The nubs should snap into place. (fig 4.1)
4. Align the pins with the holes on the back for the Power Adapter. Press the Power Adapter onto the pins and slide to lock it into place. (fig 4.2)

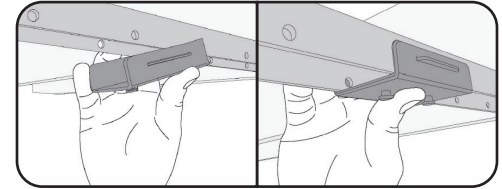


fig 4.1

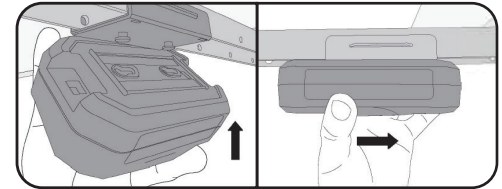


fig 4.2

Step 4: Install Power Adapters and Cable Management Clips (cont.)

5. To secure and organize the cables, determine where to place the cable management clips. (fig 4.3)
6. Peel the adhesive backing off a cable management clip and place it on the ceiling. Be sure to press firmly to ensure it sticks. (fig 4.3)
7. Secure the cable management clip with a screw, place all wires into the clip, and securely close the clip. (fig 4.4)
8. Repeat steps 5-7 for additional cable management clips to secure and organize cables.
9. You can also organize cables by winding the excess cable around the power adapter housing or placing the cable in the Smart Track. (fig 4.5)
10. Once you have organized the cables you can install the gray Smart Track cable covers. (fig 4.6)

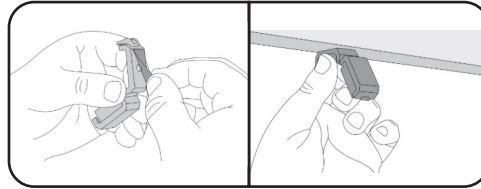


fig 4.3

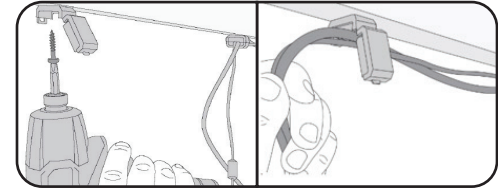


fig 4.4

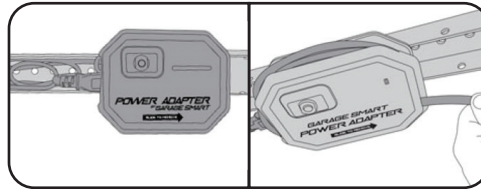


fig 4.5

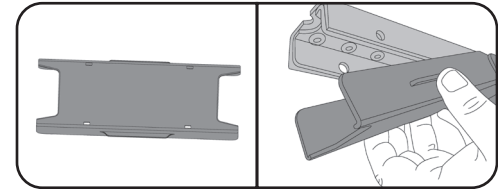
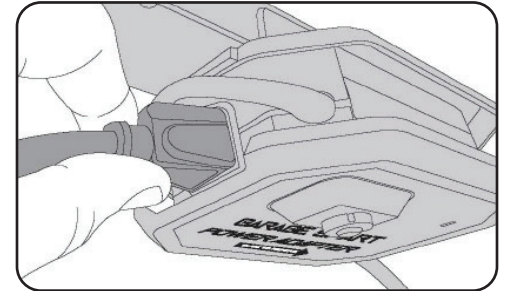
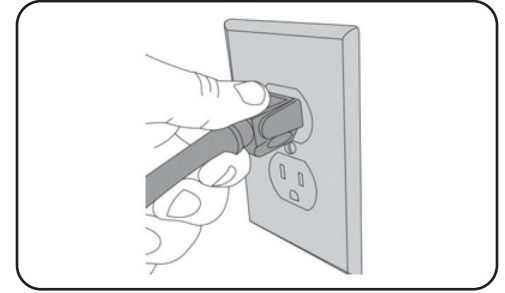


fig 4.6

Step 4: Install Power Adapters and Cable Management Clips (cont.)

10. Once all Power Adapters have been installed, connect them to the closest outlet (this may be a wall outlet or the power pass through on another Power Adapter).
11. The LED on the Power Adapter will glow when powered on.
12. Connect the DC cable from the Power Adapter to its corresponding MyLifter.

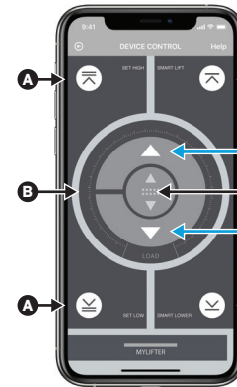


NOTE

Additional Garage Smart products with AC connections can be powered by connecting their AC cable to the AC outlet on the Power Adapter.

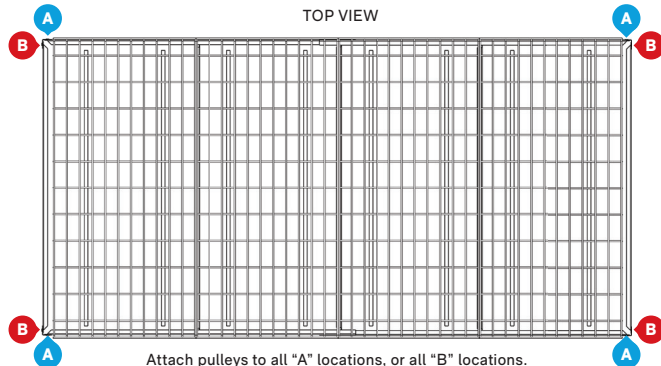
Step 5: Attach Platform To MyLifters

1. On the “Device Control” screen, press and hold the Manual Lower arrow to let out enough cable to run through the pulley block and back up to the Smart Track. (fig 5.1)
2. Run each cable through the pulley block and attach it to the Smart Track using the provided carabiners. (fig 5.2) NOTE: The carabiner must be placed in the first hole next to the MyLifter on the end with the DC power cable. (fig 5.2)
3. Using a carabiner, connect each pulley block to its corresponding 3-hole upright on the platform. (fig 5.3) The pulley wheels should be parallel to the Smart Track. When attaching the pulleys, ensure cables are not twisted. Be consistent by attaching all pulleys to the same side of the 3-hole upright (e.g. Attach pulleys to all “A” locations, or all “B” locations. Failure to do so can damage the Mylifters). (fig 5.4)



- A. SET HIGH AND LOW POINTS**
Program Smart High and Smart Low points for safety and convenience.
- B. LOAD GAUGE**
Indicates the percentage of weight MyLifter is lifting relative to its lifting capacity.
- C. SMART LIFT AND SMART LOWER**
Lift and lower your items to preset Smart High and Smart Low with one tap.
- D. VARIABLE SPEED CONTROLLER**
Press and hold to activate variable speed slider to lift/lower ensuring perfect placement of your items.
- E. MANUAL LIFT OR LOWER BUTTONS**
Press and hold these buttons to manually lift or lower your items at full speed.

fig 5.1



Attach pulleys to all “A” locations, or all “B” locations. Failure to do so can damage the MyLifters.

fig 5.4



fig 5.2



fig 5.3

Step 5: Attach Platform To MyLifters (cont.)

4. Make sure that the cables are as vertical as possible. Angled cables will damage the MyLifter. (fig 5.5)
5. On the "Device Control" screen use Manual Lift to adjust the cables and take excessive slack out of the cables without lifting the platform off the floor. Now set the Smart Low point. (fig 5.6)
6. Your platform is ready for use. When loading (and during subsequent operation) be sure to balance and secure the load.
7. The first time you raise the platform to the ceiling be sure to set the Smart High point. (fig 5.6) This will keep you from running items into the ceiling. Keep in mind the high point may need to be adjusted if the height of the items you are storing changes.
8. Review the safety instruction at the beginning of this manual to ensure safe operation of your platform.

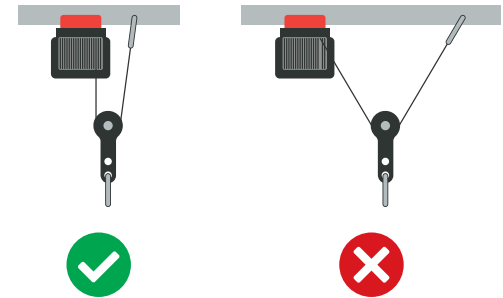
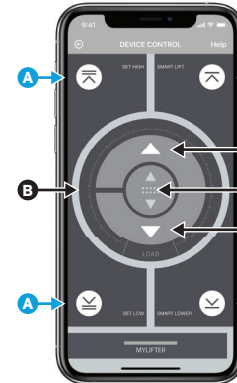


fig 5.5



- A. SET HIGH AND LOW POINTS**
Program Smart High and Smart Low points for safety and convenience.
- B. LOAD GAUGE**
Indicates the percentage of weight MyLifter is lifting relative to its lifting capacity.
- C. SMART LIFT AND SMART LOWER**
Lift and lower your items to preset Smart High and Smart Low with one tap.
- D. VARIABLE SPEED CONTROLLER**
Press and hold to activate variable speed slider to lift/lower ensuring perfect placement of your items.
- E. MANUAL LIFT OR LOWER BUTTONS**
Press and hold these buttons to manually lift or lower your items at full speed.

fig 5.6