

FIRE & WATER CHESTS

Models FCA4 and DSBA4

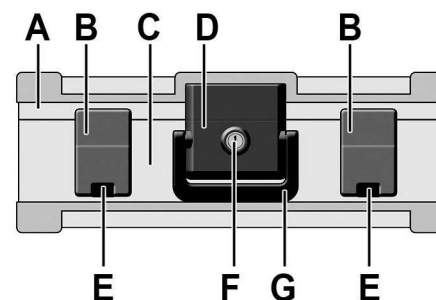


Read this manual carefully and never store it inside the safe!

PACKAGE CONTENTS

- 1 - Chest
- 1 - Operation Manual
- 2 - Entry Keys

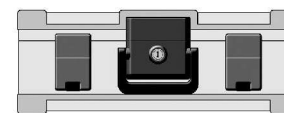
PRODUCT OVERVIEW



- A - Chest Lid
- B - Compression Latches
- C - Chest Body
- D - Lock Assembly
- E - Latch Buttons
- F - Lock Cylinder
- G - Handle

IMPORTANT!

To Ensure Fire & Water Protection,
Always Store Flat with Lid Up!



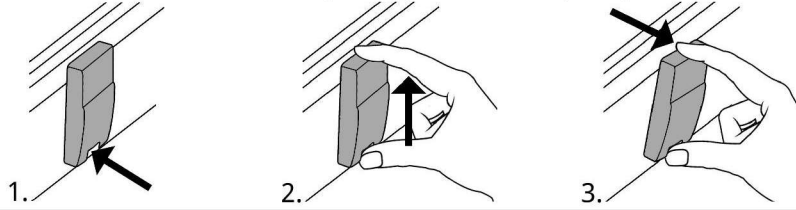
RIGHT!

Never Store in Upright Position with
Lock (& Handle) Facing Up!



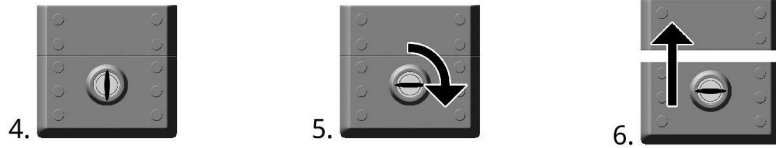
OPEN COMPRESSION LATCHES

1. Press in on small black piece at bottom of latches.
2. Lift latches slightly upward while pressing bottom.
3. Once latch is lifted upward, pull top of latch back.



UNLOCK CHEST (All Models)

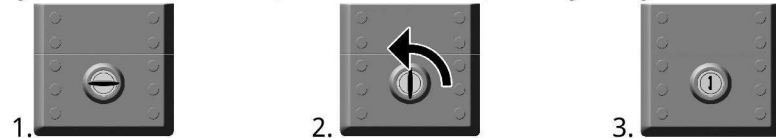
4. Once latches are open, insert key into lock cylinder.
5. Turn the key to the right 3 turn (90° clockwise).
6. Chest is now unlocked and you may lift the lid.



NOTE: Do Not Turn key unless it is inserted all the way into the lock!

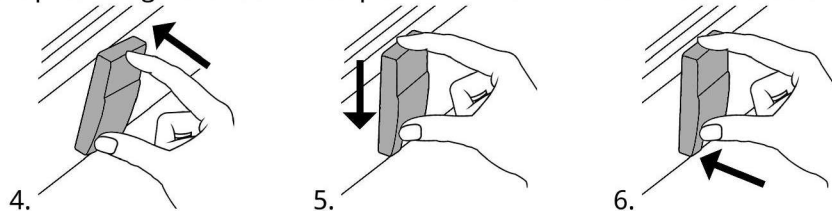
LOCK CHEST (All Models)

1. Close lid and insert key into lock cylinder.
2. Turn the key to left 3 turn (90° counterclockwise).
3. Chest is now locked and you may remove the key.



CLOSE COMPRESSION LATCHES

4. With chest locked, lift latches and press flat against chest.
5. With latches flat against chest push downward.
6. Press inwards on latches to ensure latch is sealed.



PROPER USE

Cathedral Chests are designed to protect paper documents and files from heat and moisture damage due to exposure to fire and water.

FIRE PROTECTION

Independent testing verifies the interior temperature remains below 350° F (177°C) for 30 minutes when outside temperature is up to 1550° F (843°C).

WATER PROTECTION

Independent testing verifies that the interior remains dry when completely submerged for up to 2 hours.

IMPORTANT!

Due to airtight seal it is recommended that you occasionally open safe and air it out for at least 30 minutes to prevent any build up of moisture inside.

Your safe identification record:

Model no. _____ Key no. _____

Free lifetime replacement in the event of fire damage. This warranty is only valid for the original retailer purchaser from the date of the initial purchase and is NOT transferrable. You MUST keep the original sales invoice.