

**Installation Instruction For:  
HALOGEN/ LED Light Kit  
E-Z-GO RXV**

**Contents of Kit:**

1. Headlights(2)
2. Tail Lights (2)
3. Wiring Harness
4. Zip Ties(8)
5. Screws(8)



**Installation Instruction For:  
HALOGEN/ LED Light Kit  
E-Z-GO RXV**

**Installation Instruction:**

**Step 1**

Cut out template and place it against the cart using the body lines for alignment. Apply masking tape along the outer edges of the lines to hold template in place. Trace the inside of the template with a marker or pen.



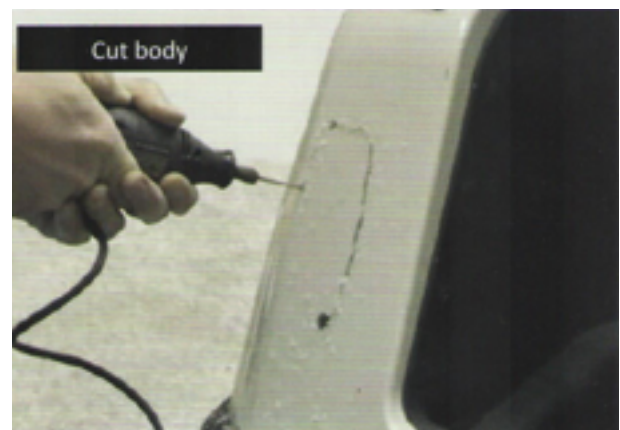
**Step 2**

Trace the inside of the template with a marker or pen. Next, drill a pilot hole so you will have a starting point to begin cutting.



**Step 3**

Using the template on the cart, cut out the light area of the body starting at the pilot hole from step 2.



**Installation Instruction For:  
HALOGEN/ LED Light Kit  
E-Z-GO RXV**

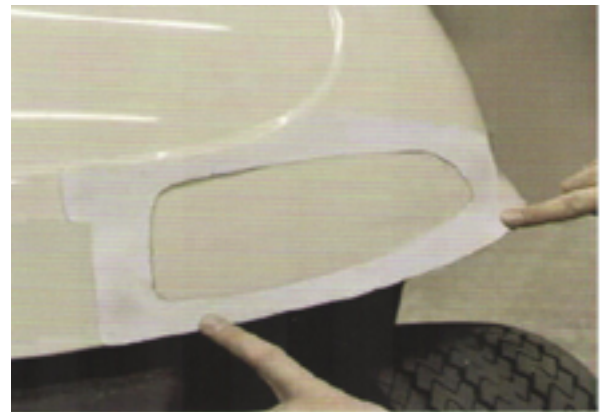
**Step 4**

Place tail light into the rear of the vehicle. Insert four screws into the headlight using supplied hardware. Repeat process on opposite side.



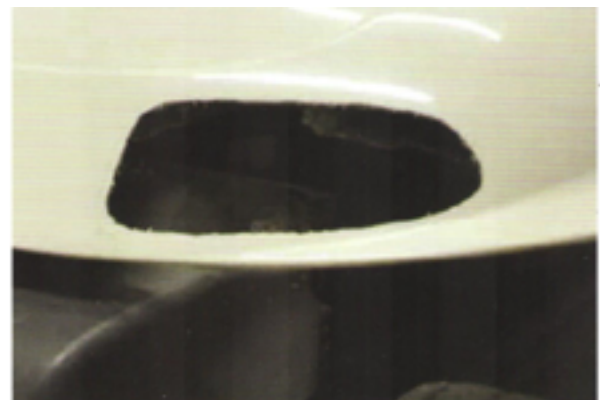
**Step 5**

Place headlight template against the cart using the body lines for alignment. Apply masking tape along the outer edges of the lines to hold template in place. Trace the inside of the template with a marker or pen.



**Step 6**

Drill a pilot hole and cut out shape of the headlight.



**Installation Instruction For:  
HALOGEN/ LED Light Kit  
E-Z-GO RXV**

**Step 7**

Insert headlight and attach to cart using clips located behind the headlight.



**Step 8**

Run wiring harness down the side of the frame as shown.



**Step 9**

Run wiring harness beside the frame so it doesn't hang. Secure it with zip ties to keep it in place.



**Installation Instruction For:  
HALOGEN/ LED Light Kit  
E-Z-GO RXV**

**Step 10**

Using a 5/16" drill bit, drill out the hole for the push/ pull switch.



**Step 11**

Unscrew the torx head screws and remove dashboard. \*\* Do not remove completely.\*\*



**Step 12**

Feed threaded end of switch through the dash where the hole was drilled. Attach the nut to secure the harness.



**Step 13**

**Installation Instruction For:  
HALOGEN/ LED Light Kit  
E-Z-GO RXV**

Attach push/pull knob for switch.

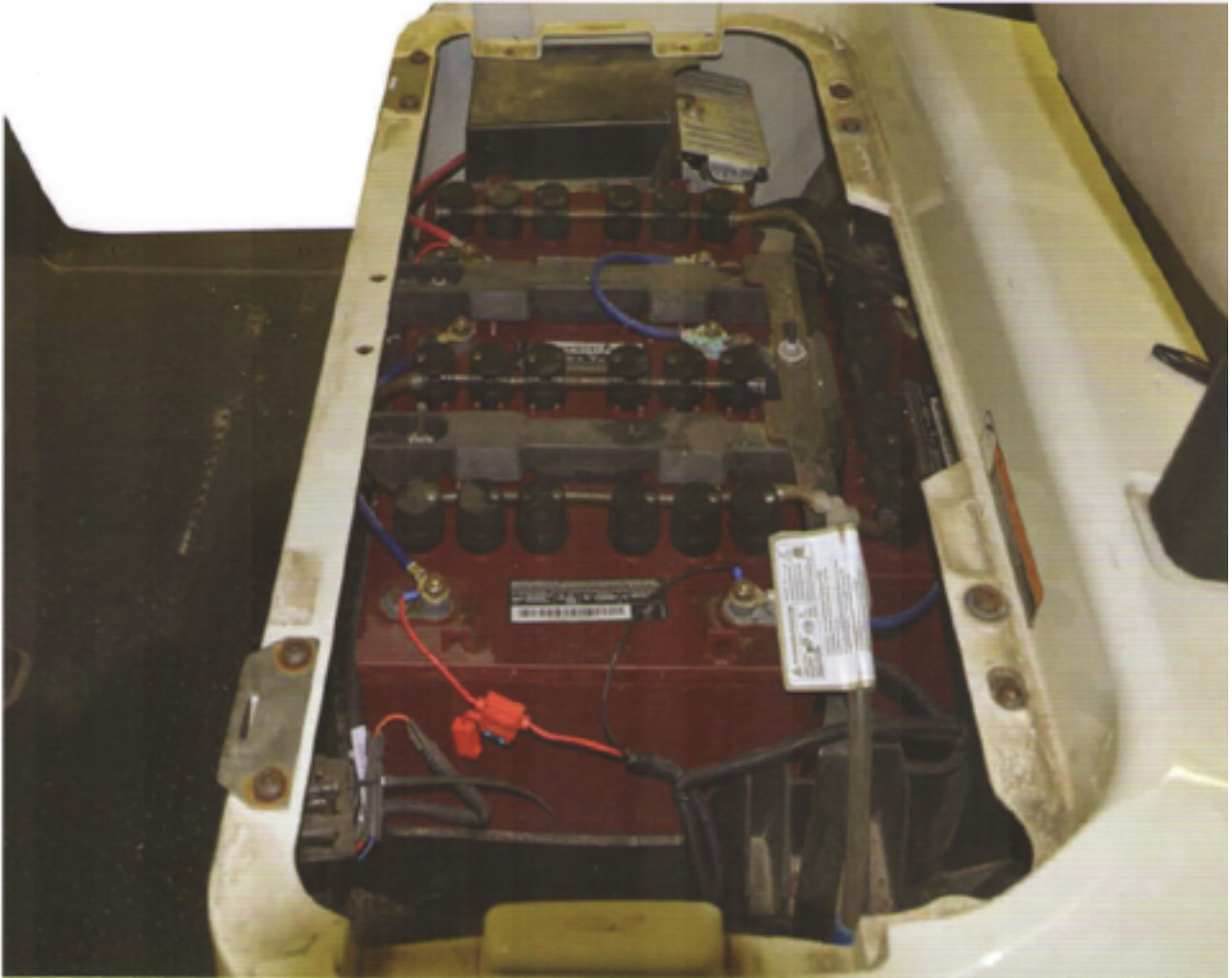


**Step 14**

Secure remaining harness under cowl using zip ties.



**Installation Instruction For:  
HALOGEN/ LED Light Kit  
E-Z-GO RXV**



**Step 15**

If you have 12V batteries, wire the harness to the battery as shown. If you have 8V batteries, a voltage reducer will be necessary.